

# PALO ALTO RESIDENCE

## PALO ALTO, CA

## PALO ALTO RESIDENCE

A young couple approached Studio VARA to design a new ground-up residence for their busy family of five on a prominent yet petite corner lot in Old Palo Alto. With a generous program and a limited allowable footprint, they challenged us to create a small, flexible home with a large presence.

To solve this puzzle, we conceived of the house as a Rubik's Cube of tightly interlocking spaces that expand outward into a landscape of intimate yet generous outdoor rooms. To break up the massing and achieve lightness within a compact, rectilinear envelope, we used distinct materials to articulate three stacked volumes that shift and recede from sight as they move up: concrete for the basement, wood at the main level, and dark zinc for the top floor. The main level is lifted slightly above grade, allowing deep light wells to penetrate underground and provide light and air to a full basement. Carefully considered window placement adds ornament and rhythm to the façade.

Inside, sumptuous materials and sophisticated detailing make the home feel large and luxurious. Uninterrupted floor-to-ceiling glass walls allow the outdoors and daylight to penetrate the house and maximize sightlines to achieve a feeling of spaciousness. Elegant, carefully considered cabinetry and built-ins in the kitchen and entertaining areas on the main level ensure that the open plan does not feel loft-like. A sculptural steel stair set against a continuous stone-slab wall anchors the entire house and unifies the three levels. Upstairs, the master suite and bedrooms are strategically organized to ensure privacy and views outside.

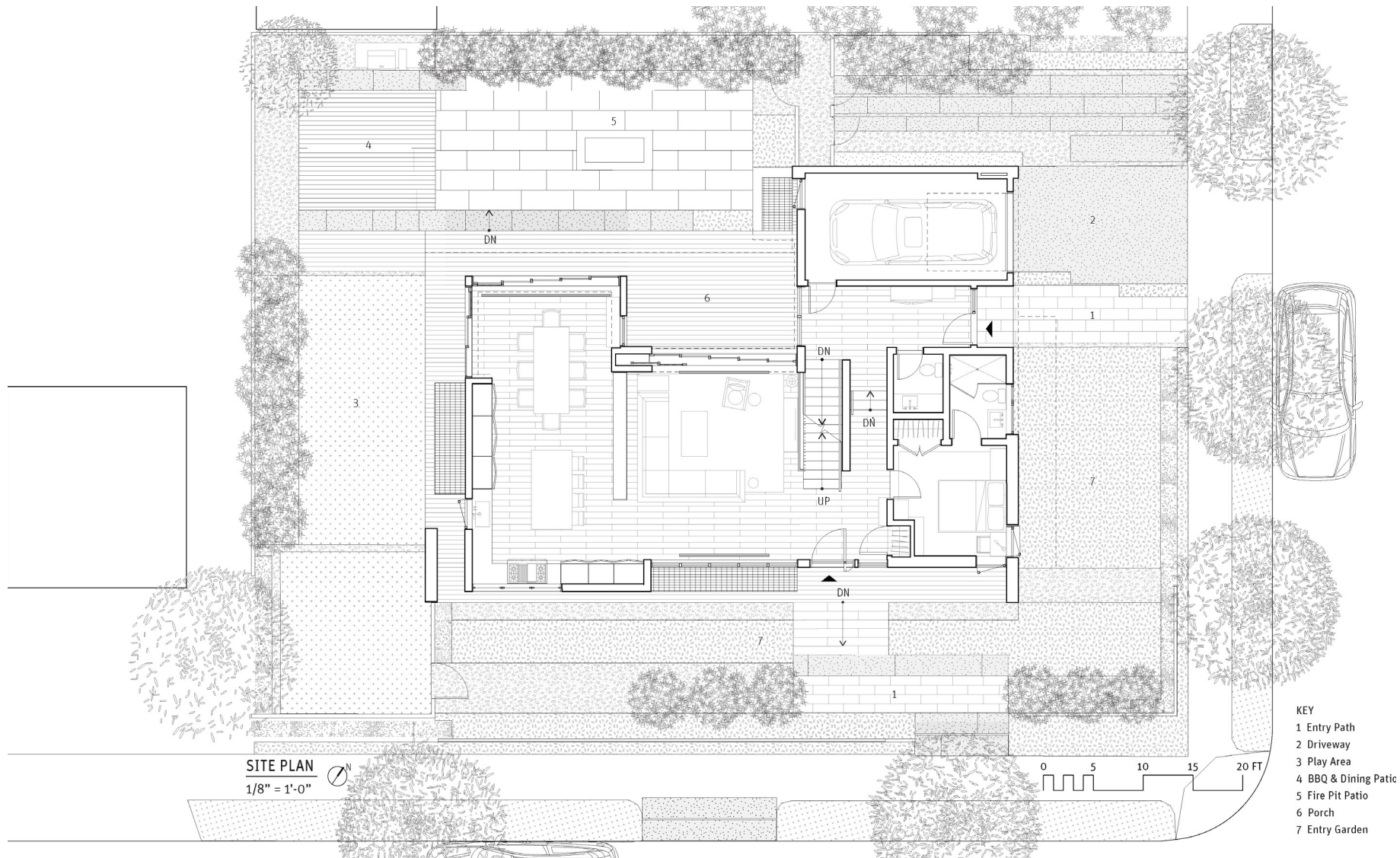
Studio VARA provided a full range of services to weave the architecture, interiors, furnishings, and landscape into a seamless, integrated whole.

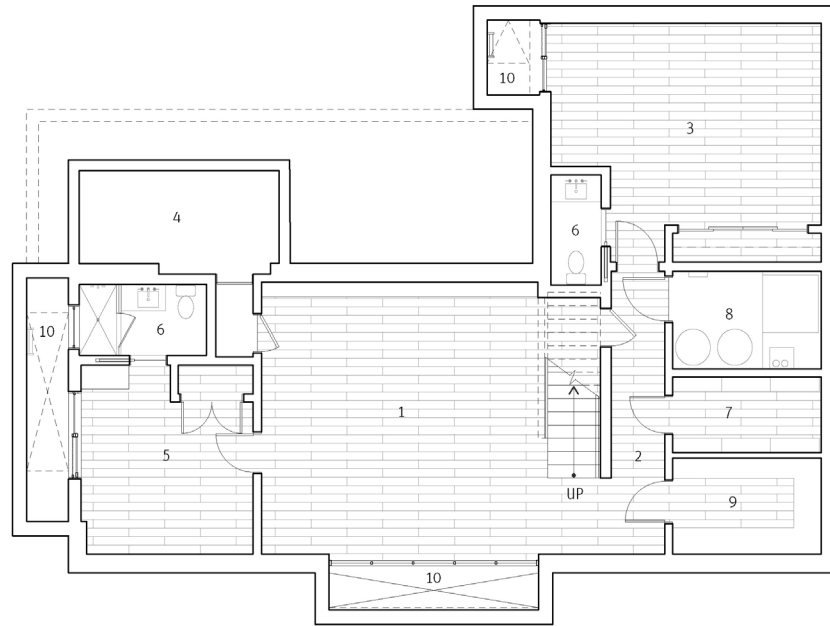
### Media Contact:

Christopher Roach, Principal  
[info@studiovara.com](mailto:info@studiovara.com)

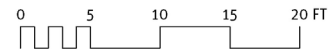


PALO ALTO RESIDENCE



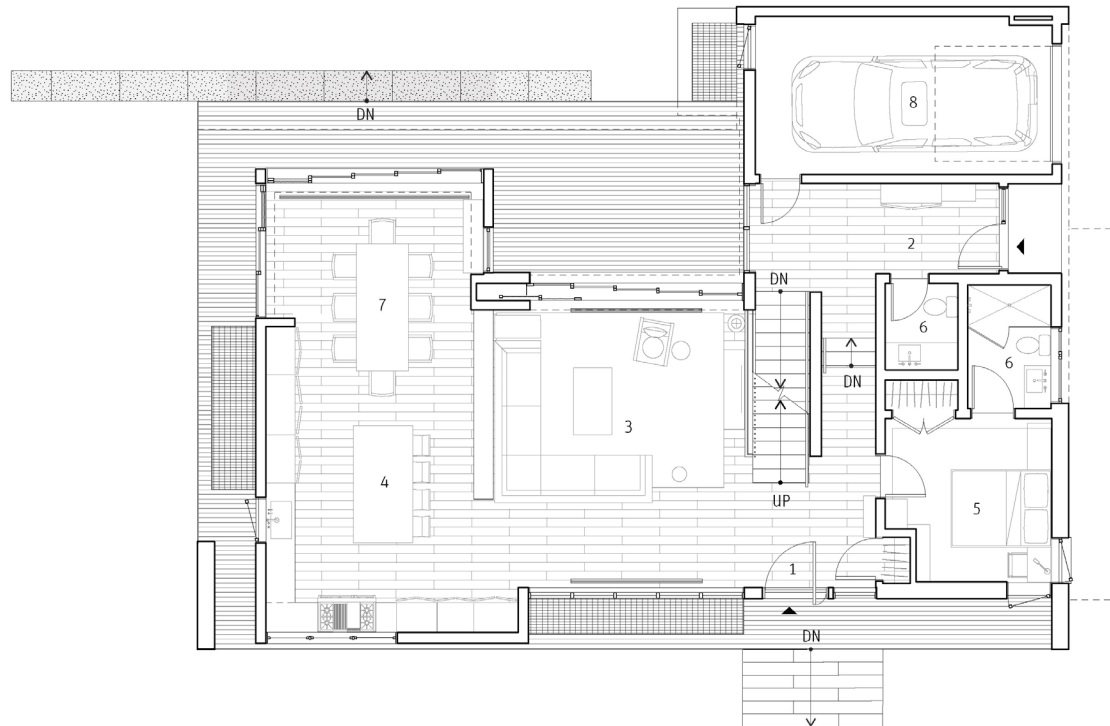


**BASEMENT FLOOR PLAN**   
 1/8" = 1'-0"

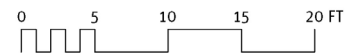


- KEY**
- 1 Family Room
  - 2 Hallway
  - 3 Exercise Room
  - 4 Crawlspace
  - 5 Bedroom
  - 6 Bathroom
  - 7 Wine Room
  - 8 Mech
  - 9 Storage
  - 10 Light Well

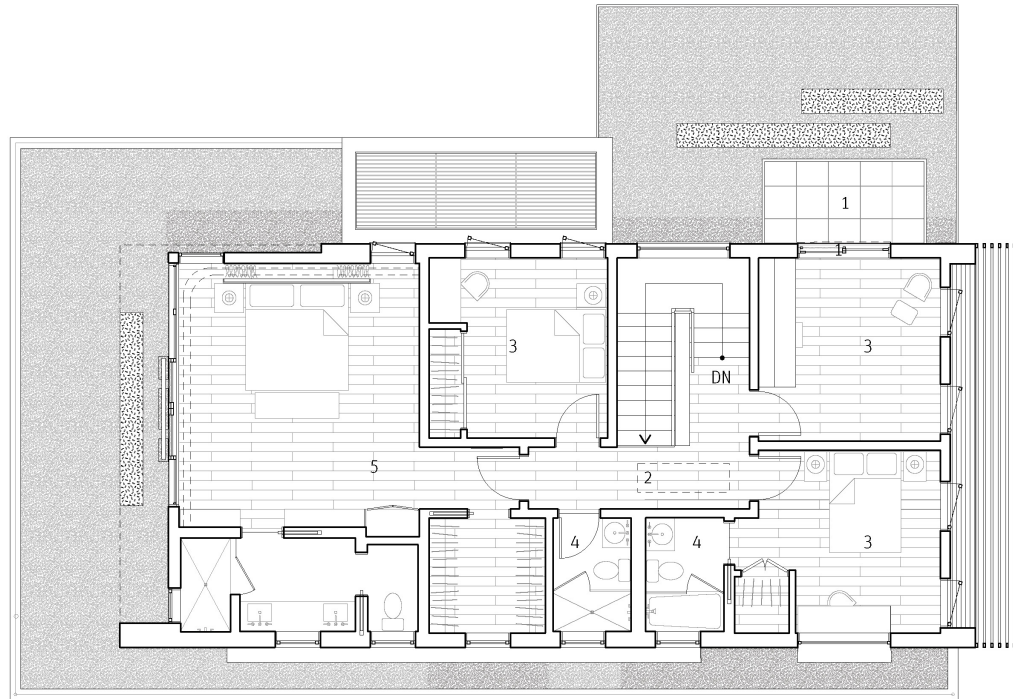




FIRST FLOOR PLAN   
 1/8" = 1'-0"

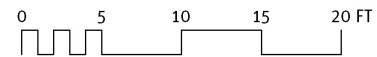


- KEY
- 1 Entry
  - 2 Foyer
  - 3 Great Room
  - 4 Kitchen
  - 5 Bedroom
  - 6 Bathroom
  - 7 Dining Room
  - 8 Garage



## SECOND FLOOR PLAN

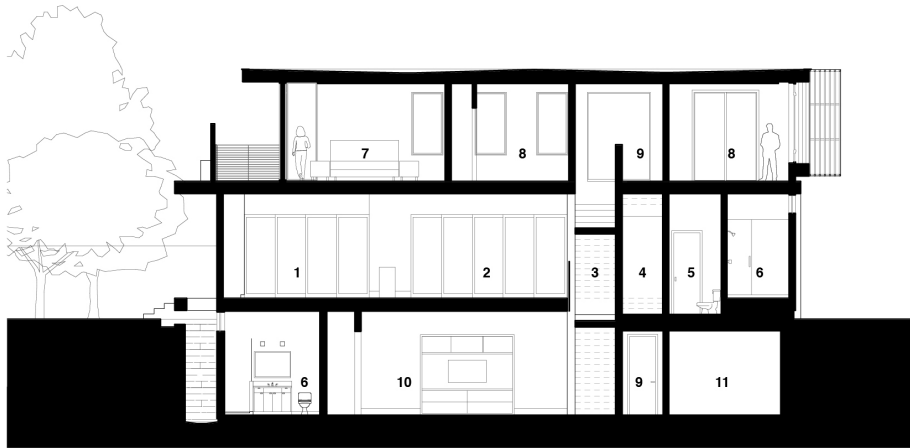
1/8" = 1'-0"



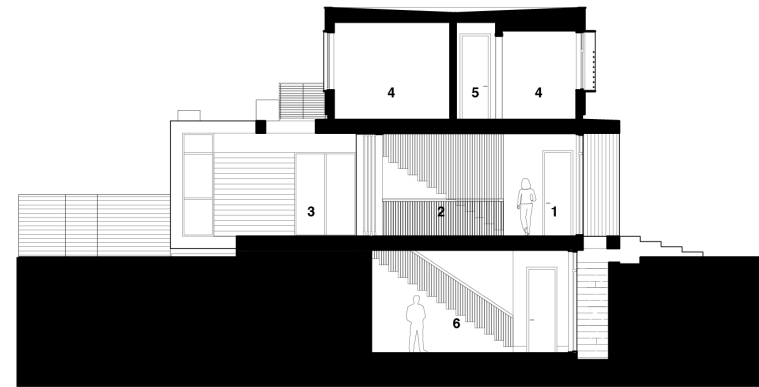
### KEY

- 1 Deck
- 2 Hallway
- 3 Bedroom
- 4 Bathroom
- 5 Master Suite

- 1 DINING ROOM
- 2 GREAT ROOM
- 3 STAIR
- 4 ENTRY
- 5 1/2 BATH
- 6 BATH
- 7 MASTER BEDROOM
- 8 BEDROOM
- 9 HALLWAY
- 10 FAMILY ROOM
- 11 MECH

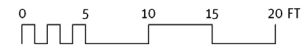


- 1 ENTRY
- 2 GREAT ROOM
- 3 DECK
- 4 BEDROOM
- 5 HALLWAY
- 6 FAMILY ROOM

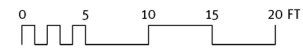




EAST ELEVATION  
1/8" = 1'-0"

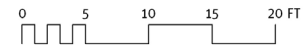


SOUTH ELEVATION  
1/8" = 1'-0"

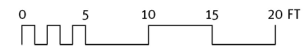


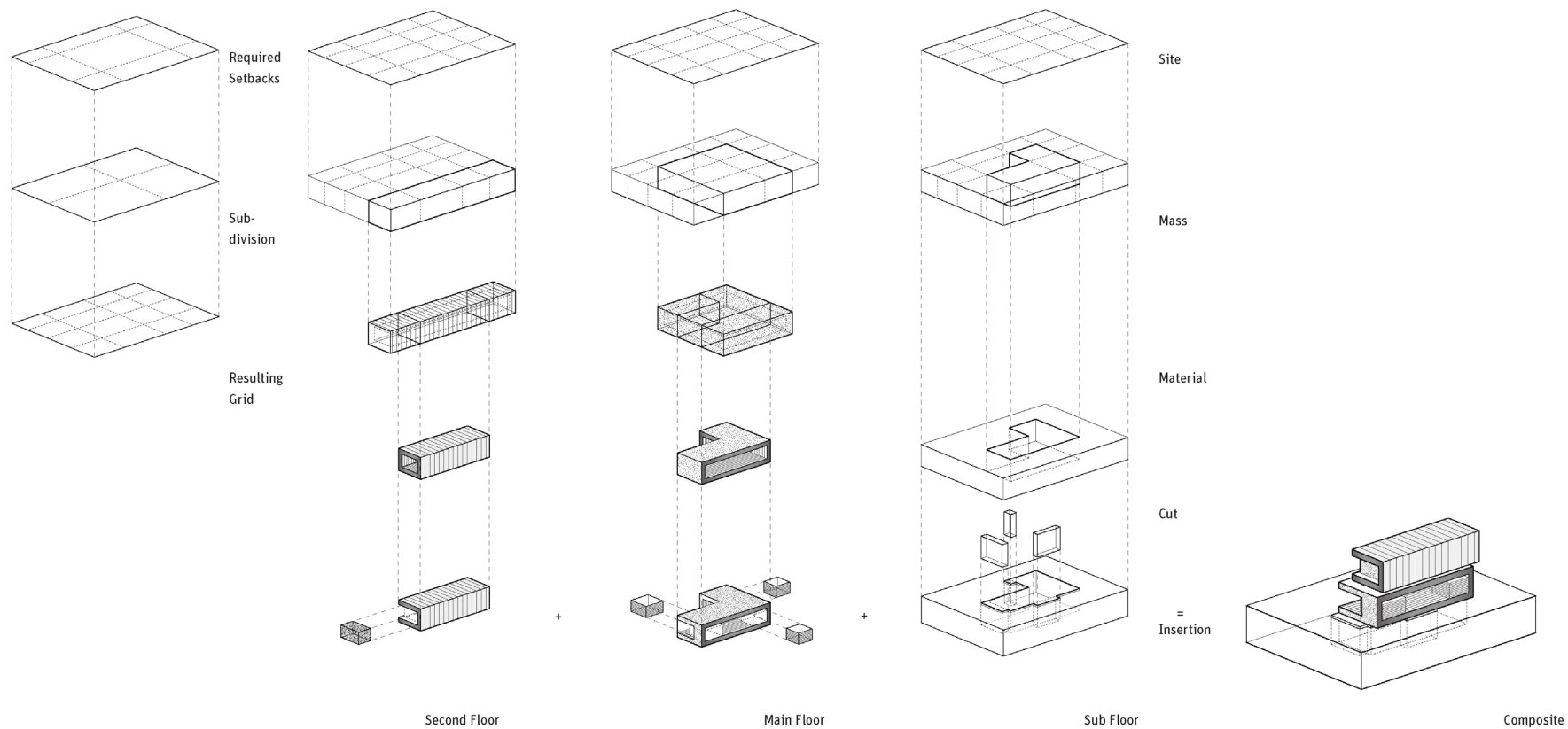


WEST ELEVATION  
1/8" = 1'-0"



NORTH ELEVATION  
1/8" = 1'-0"





TECTONIC DIAGRAM





Matthew Millman Photography





Matthew Millman Photography





Matthew Millman Photography



Matthew Millman Photography





Matthew Millman Photography



Matthew Millman Photography



Matthew Millman Photography





Matthew Millman Photography





Matthew Millman Photography



Matthew Millman Photography





Matthew Millman Photography



Matthew Millman Photography



Matthew Millman Photography



Matthew Millman Photography





Matthew Millman Photography





Matthew Millman Photography



Matthew Millman Photography



Matthew Millman Photography





Matthew Millman Photography



Matthew Millman Photography