



Taylor_Smyth **architects**





Annex Coach House

SIZE:
3,200 sq. ft.

LOCATION:
Toronto, Canada

COMPLETED:
2020

PROJECT TEAM:
Michael Taylor,
Partner-in-Charge,
David King,
Intern Architect

IMAGES:
Doublespace Photography Inc.;
Geoff Parkin (Before Images)

**In Collaboration
with William Fulghum
Design Associates;
Landscape Architect:
Holbrook + Associates
Landscape Architects**

TUCKED AWAY FROM THE STREET BEHIND ANOTHER HOUSE, THE ORIGINAL BUILDING WAS PART OF MOORE'S HEARSE LIVERY AND USED AS A VEHICLE DEPOT. ALTERED AND ADDED TO OVER TIME, IT WAS CONVERTED INTO A RESIDENCE IN THE 1980'S. THE ONLY THING LEFT FROM THE LIVERY ARE THE BRICK WALLS IN THE COURTYARDS.

Taylor Smyth Architects, working with William Fulghum Design Associates, gutted the two-storey structure down to the bare studs and enhanced the key features of the residence with a contemporary light-filled interior that incorporates a rich material palette of wood, stone, bronze and leather. New furniture was selected for all spaces to complement the design. Distinctive wall and ceiling light fixtures throughout the house combine vintage 1960's pieces with modern ones.

The entry hall features built-in millwork, combining walnut, lacquered wood and custom closet doors of leather trimmed in bronze. From there, the view through the house culminates in the den where a linear gas fireplace is inset into a dramatic wall of dark veined stone trimmed in bronze.

The most remarkable features of the house are the pair of ivy-clad landscaped courtyards that flank the den, and the extensive rooftop terrace above.

A single ceiling plane unifies the living and dining room, appearing to float away from the walls with the incorporation of soft indirect lighting around its perimeter, and pierced by two skylights that flood the space with light. The living room features a stone and walnut-clad fireplace.

The stair to the second floor is surmounted by a skylight and continues up another partial level to a large private landscaped terrace over the living/dining and den, where raised planters and a series of decks define a sequence of seating and entertaining spaces. A custom wood screen, its random vertical slats creating a rich composition of light and shade, conceals the wall of the second floor.

The second floor contains the master bedroom, ensuite bathroom and walk-in-closet, and a second bedroom and bathroom. The master bathroom is illuminated through a screen of alternating back-painted and acid-etched glass with diffuse natural light from the skylight at the stair. Inside, statuario marble and charcoal coloured porcelain tile create a dramatic contrast of light and dark.









































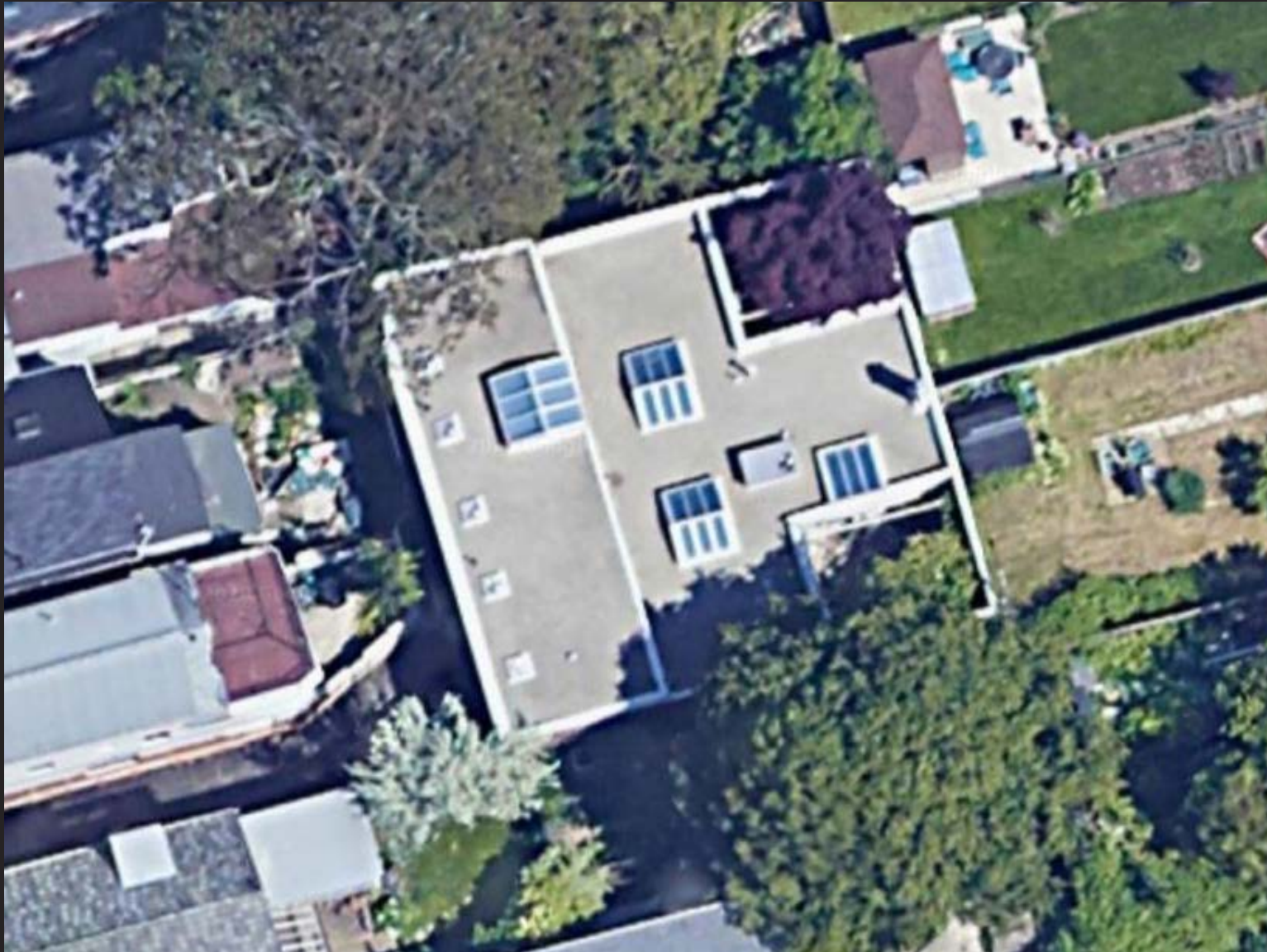
























Contact

Kian Tang

Director, Marketing & Communications

t 416.968.6688 x 232

f 416.968.7728

ktang@taylorsofmyth.com

taylorsofmyth.com