

A modern house exterior featuring large glass windows and doors framed in black. The building has a combination of horizontal wood cladding and dark grey panels. The interior is visible through the glass, showing a dining area with a wooden table and chairs, and a kitchen with white cabinetry. A small planter with a white pot and green plants sits on the left. The scene is lit with warm interior lights and exterior wall sconces.

Taylor\_Smyth **architects**



BEFORE RENOVATION





## **Fishleigh Drive Residence**

CLIENT:  
**Jesleen Rana  
and Jihad Abouali**

SIZE:  
**4,300 sq. ft.**

LOCATION:  
**Toronto, Canada**

COMPLETION:  
**December 2018**

PHOTOS:  
**Doublespace Photography Inc.**

RENDERINGS AND PLAN:  
**Taylor Smyth Architects**



Following the success of our first house overlooking the Scarborough Bluffs, we were approached to design another new residence a few blocks away, also perched at the edge of the Bluffs, 50 feet above Lake Ontario.





The ground floor is centred on a dramatic double height great room, separated from the kitchen/dining area by a vertical wood screen. An open stair runs through the centre of the house, overlooking the great room and terminates at the third floor, where the roof deck, partially covered by a wood trellis, provides spectacular views out over the lake.





The house embraces the landscape – large sliding doors open out to the backyard and pool, and an exterior planter reappears inside between the great room and dining room.















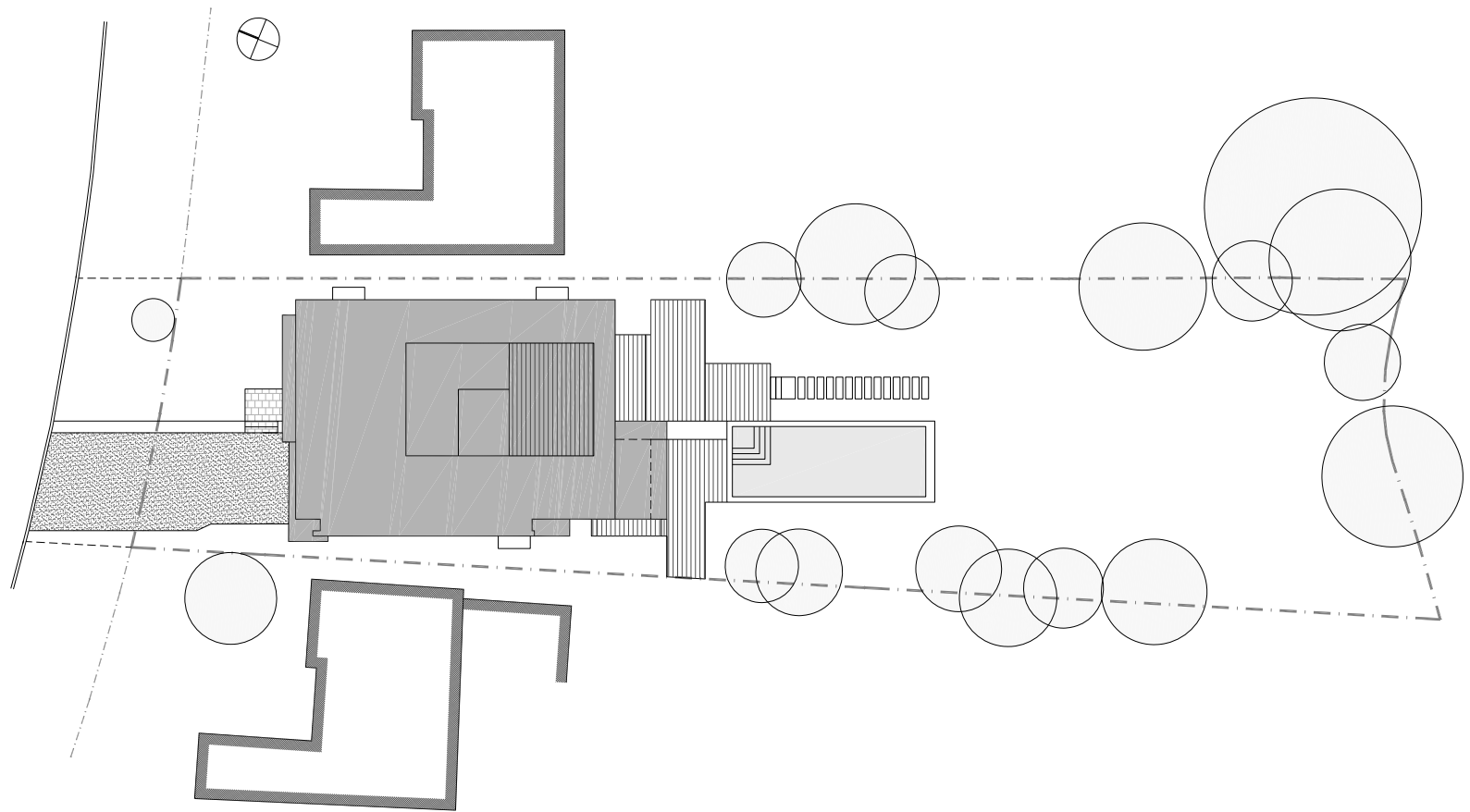


The second floor contains the master bedroom with a spacious and luxurious ensuite bathroom and walk-in closet, and three other bedrooms.

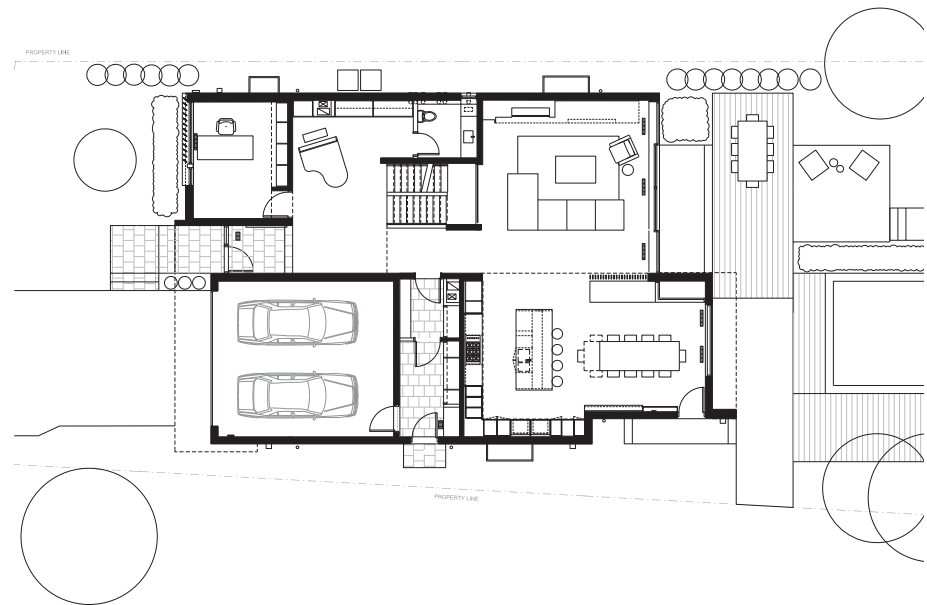




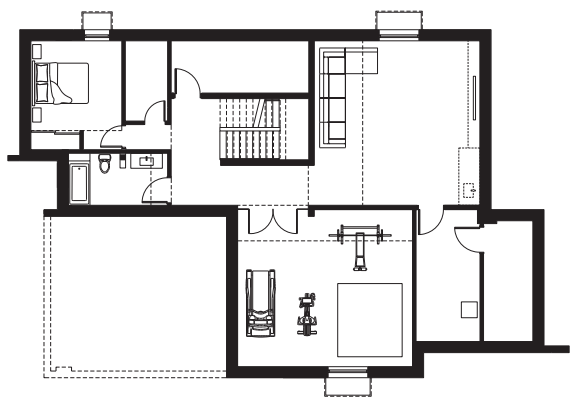




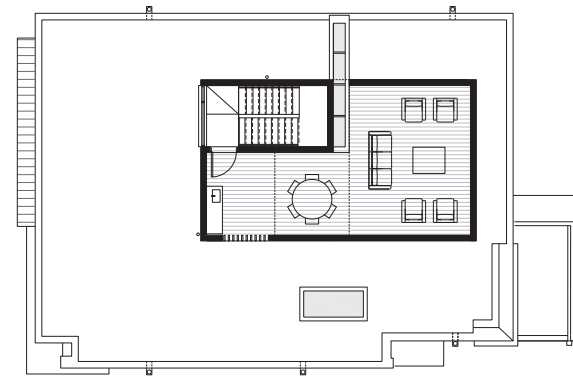
GROUND FLOOR PLAN



LOWER LEVEL PLAN



TERRACE FLOOR PLAN



UPPER LEVEL PLAN







**Contact**

Kian Tang  
Director, Marketing  
& Communications  
416.968.6688 x 232  
ktang@taylorsmyth.com  
**taylorsmyth.com**