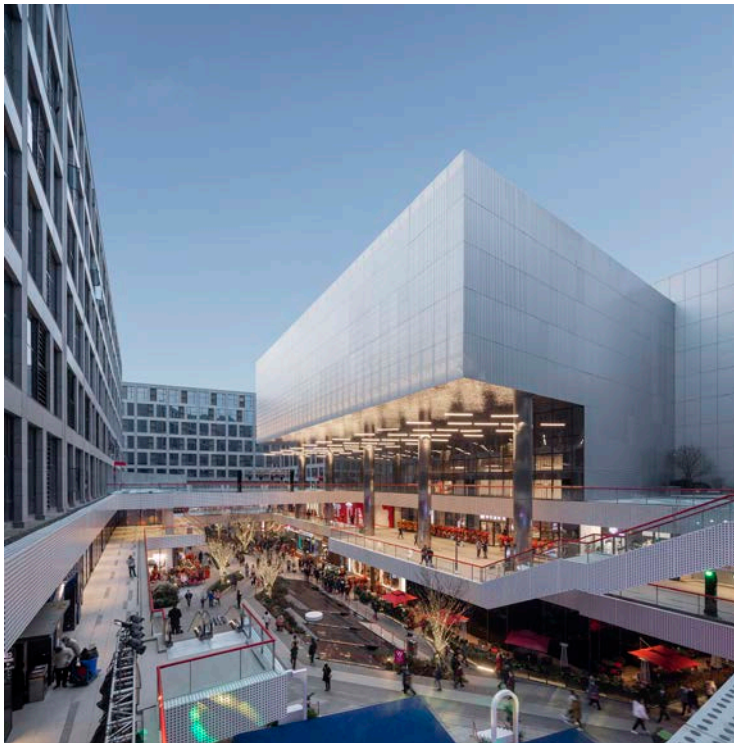


PRESS RELEASE JUNE 25, 2021

Starry Street Wuhou

Completed and started operating at the end of 2020, Starry Street Wuhou in Chengdu designed by CLOU architects offers a symbiotic three body spatial system that connects living, retail and social spaces in the community.

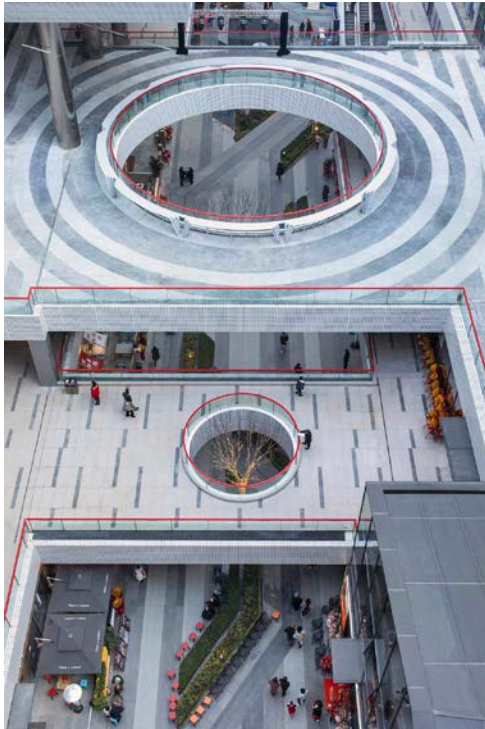


THREE BODY SPATIAL SYSTEM

Starry Street is located in the newly planned Wuhou District of south-west Chengdu. It's adjacent to the intersection of two main roads as well as that of two new metro lines in which connect residents of the area directly with the office and industrial park. CLOU's design aims to connect the living, retail, and social spaces into a symbiotic 'three-body spatial system'.

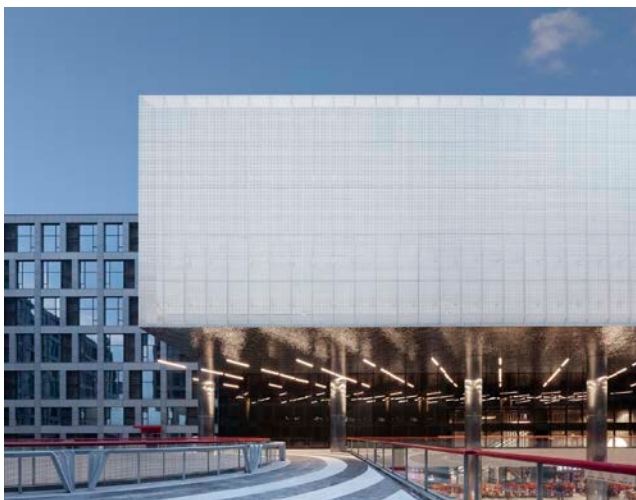
The entire project is divided into three levels, interweaved with each other from bottom to top, including retail, social and living space. Retail space located on floor 1-2 ground plane

is vibrant and appealing enough to fully utilize operational value. The upper level is residential area with windows facing streets and open views.



RESIDENTIAL, SOCIAL, RETAIL SPACE

The project consists of multiple programs such as retail, residential, and SOHO apartments. With such a program mix, CLOU confronts design challenges such as how to avoid the dark and canyon-like retail street problem amongst high towers, how to deal with the sound and light interference from the retail sector to the residential part, and how to balance the squeeze of six towers towards public space? Thus, the final design solution can form a self-circulated space system of mutual benefit and common growth between community and business.





The south and north area of the project feature SOHO apartments, outdoor basketball court, urban farm, pop-up stores, and landscaped steps. The multi-layered public space provides the local residents with solutions for their need for a healthy lifestyle and social interaction as well as the appreciation of outdoor nature.



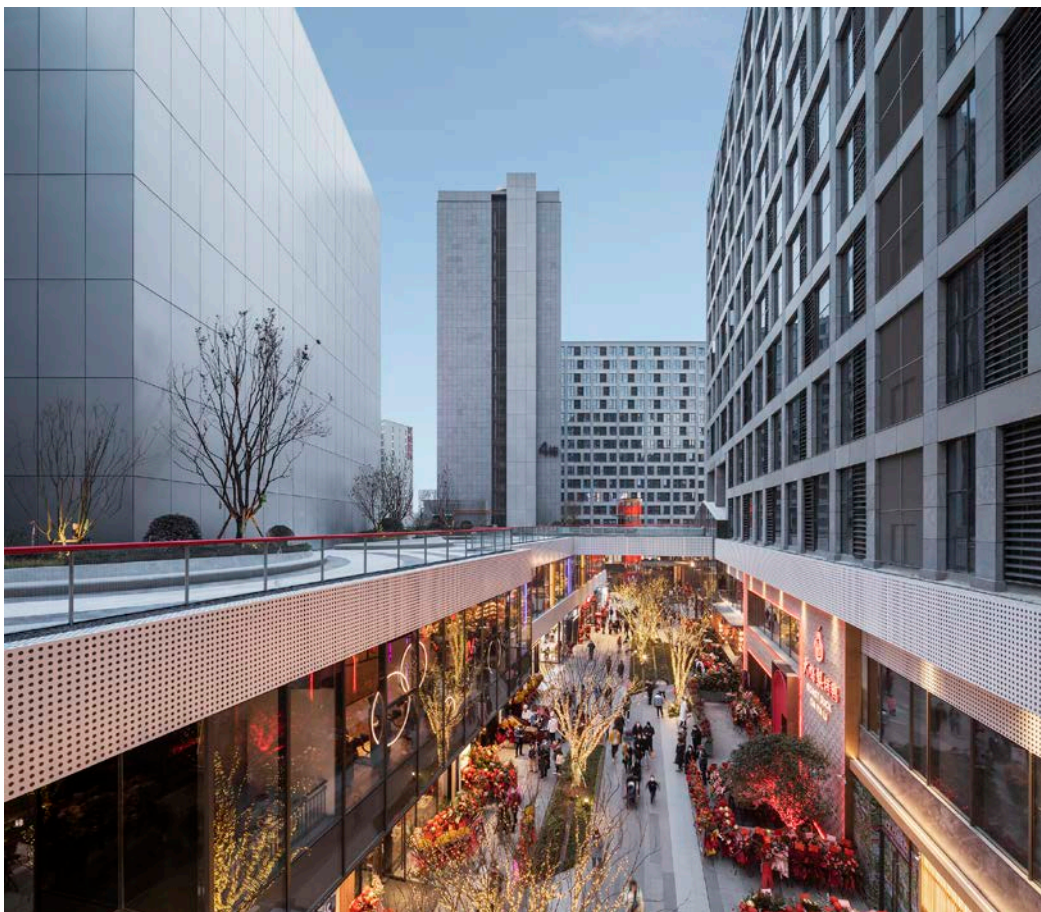
FUTURISTIC URBAN LIFE

The north entrance along the street draws people in with landscaped steps, rain sheds and hollow glass banquet centers. CLOU breaks the spatial definition of the outdoor steps at the entrance, extending the size of the rain shed and the buildings on both sides. Entering the courtyard surrounded by the residential towers, the community urban life is connected by the upward vertical circulation. The sunken plaza accommodating supermarkets and

restaurants, resonates through the round atrium with the second floor's programs such as cinema, live performance stage, and pop-up event place.



The southern block includes programs such as gym, outdoor basketball, yoga, and urban farms, which stimulate more interactions, self-improvements, and happiness through physical activities. The area that extends to the north block features celebratory, artsy, and futuristic program types such as IMAX cinema, karaoke bars, restaurants, and event gathering space.



PROJECT INFORMATION

Project Name: Starry Street Wuhou

Type: Residential, Commercial, SOHO

Location: Wuhou, Chengdu

Construction Area: 108,940 sqm

Status: Completion in 2020

Architecture Design: CLOU architects

Design Team: Jan Clostermann, Zhi Zhang, Lin Li, Sebastian Loaiza, Christopher Biggin, Alessandra Sebastiani, Yadi Zhong, Kyra Zhao, Tom Lin, Yaxi Wang, Qiao Ding, Myung Lee, Valentina Kholoshenko

Landscape Design: Lab D+H

Construction Drawings: Zhouyu Huazhou

Façade Consultant: BJetimes

Lighting Consultant: LEOX

Photography: Arch-Exist

– ENDS –

ON CLOU ARCHITECTS

CLOU is an international design studio with award-winning expertise in architecture, interiors, and landscapes. The team designs their projects - many of them of a large scale - around community nodes and social spaces.

A community of 65+ talents from China, and all over the world enjoy working collaboratively and imaginatively on bespoke projects. Their demanding clients range from shopping mall developers to house builders, hotel operators, and schools. In the process, CLOU architects strive to realize projects that will positively influence the people involved in its process, the environment, and the communities who live and work there.

ABOUT JAN CLOSTERMANN

Jan Clostermann is the Principal of CLOU architects. He is an award-winning architect with 20 years of international experience. Jan began his architectural studies at the Technical University in Berlin and in 2001 received his AA Diploma with a scholarship from the Architectural Association in London. Before founding CLOU in 2015 Jan collaborated with a Stirling Prize winning practice where he had the opportunity to pursue a broad range of projects from studios in London, Rotterdam, Singapore and Shanghai.

In 2005 following the success of the Clarke Quay and Shanghai Cruise Terminal projects, Jan moved to Beijing to direct the team designing Raffles City Beijing. Since then he has conceptualised and delivered numerous high profile mixed-use and retail projects.



CONTACT INFORMATION

Public Relations:	CLOU architects
Email:	media@clouarchitects.com
Telephone:	+86 10 8527 0095
Address:	Sanlitun SOHO Tower B Unit 801 8 Gongti North Road Chaoyang District Beijing 100027

MEDIA CHANNELS

Website:	www.clouarchitects.com
Instagram/twitter:	@clouarchitects
WeChat:	CLOU architects (Scan QR Code)
Weibo:	CLOUarchitects

