



用餐区
DINING SPACE

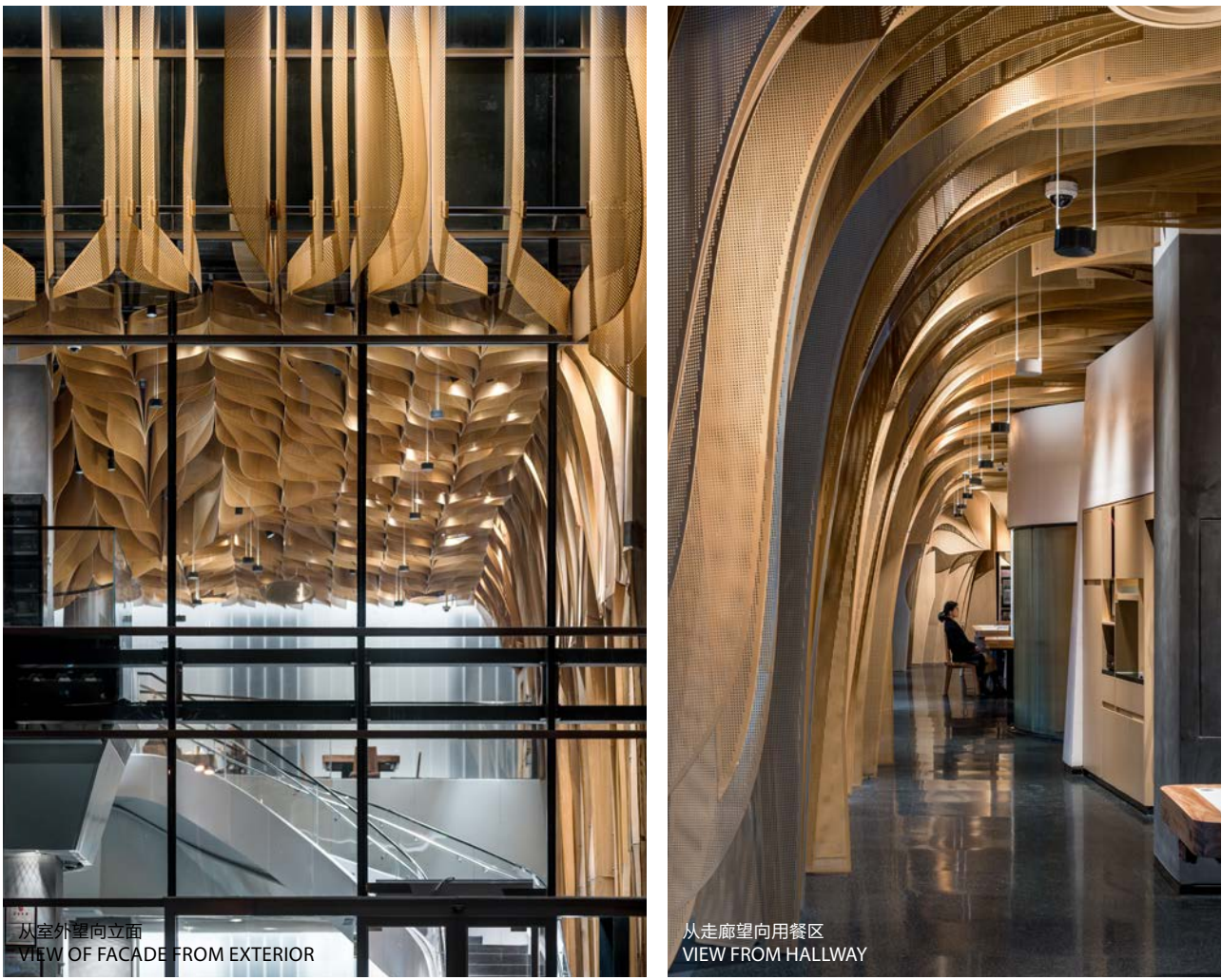
BANU FLAGSHIP RESTAURANT 巴奴旗舰餐厅

项目信息 | PROJECT FACTS

面积 Area	2100 m ²
时间 Year	2018年
设计 Design	Studio Link-Arc Kane AIUD Architecture
地址 Location	中国郑州 Zhengzhou, China

巴奴概念餐厅是一个设计面积2100平方米的室内改造项目，位于中国郑州。客户巴奴是一家新兴的火锅餐饮企业，在中国已有56家直营店，本项目作为该企业的旗舰店，将是塑造企业形象的最重要门户。巴奴一名取自木船航运时代的川江纤夫，他们用身体承载川江水路的千万民生，这种在风雨里坚持向前的精神也是巴奴企业最重要的文化核心。我们在设计上抽象提取了纤夫河流文化中的两个重要标识：湍流的空间和有张力的绳索。

The Banu Restaurant design includes the interiors and façade replacement for a 2100sm building in Zhengzhou China. As the Flagship restaurant for a growing and innovative franchise it was important for the client that the project creates a recognizable landmark along the main axis road and be welcoming to the community. The Banu name is derived from the stories of the rivermen who historically assisted boats to navigate treacherous rivers of China and who were known to eat hotpot foods to restore their strength. Our design sought to honor this history but creating a space formed from a natural yet turbulent flow and marked by the sinuous lines of the rope pull lattices.



从室外望向立面
VIEW OF FACADE FROM EXTERIOR

从走廊望向用餐区
VIEW FROM HALLWAY



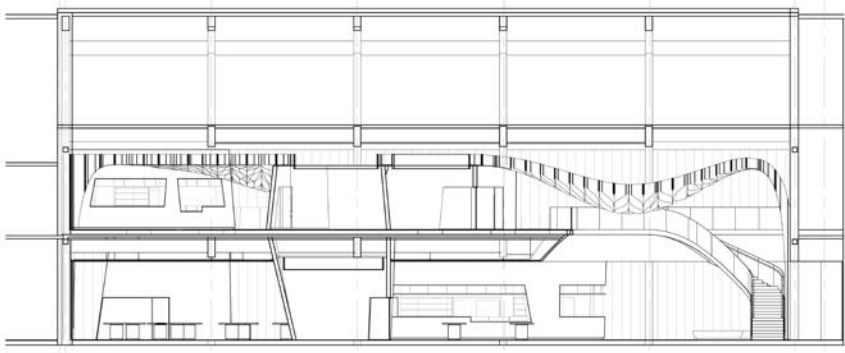
二层入口大堂
VIEW OF 2F ENTRY LOBBY

BANU FLAGSHIP RESTAURANT

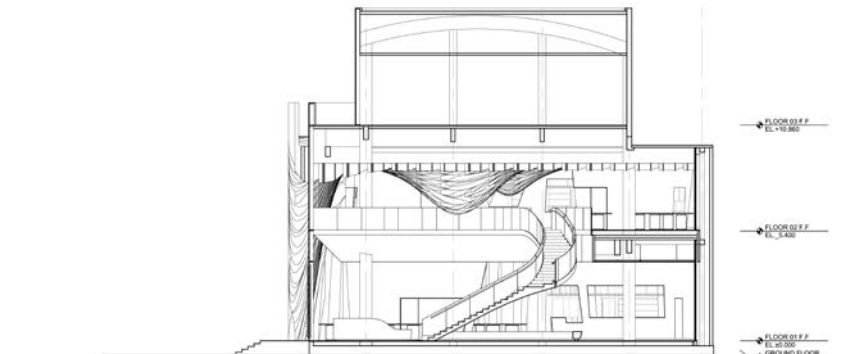
巴奴旗舰餐厅

我们在设计上抽象提取了纤夫河流文化中的两个重要标识：湍流的空间和有张力的绳索。设计首先打破了现有建筑的大规模正交网格，将空间重构为一个流动的系统，包括一系列私人用餐包间和一个藏有开放式厨房的雕塑锥体。插入建筑主体的两个相互垂直的圆筒，将大厅和待客区连为一体。

We first break down the large scale, and orthogonal structural grid of the existing building and reframe the space into a fluid organization system with a series of sculptural cones shaped for private dining and open kitchens. Then, two vertical conical voids are introduced at the lobby and the main seating area to tie two dining levels together.

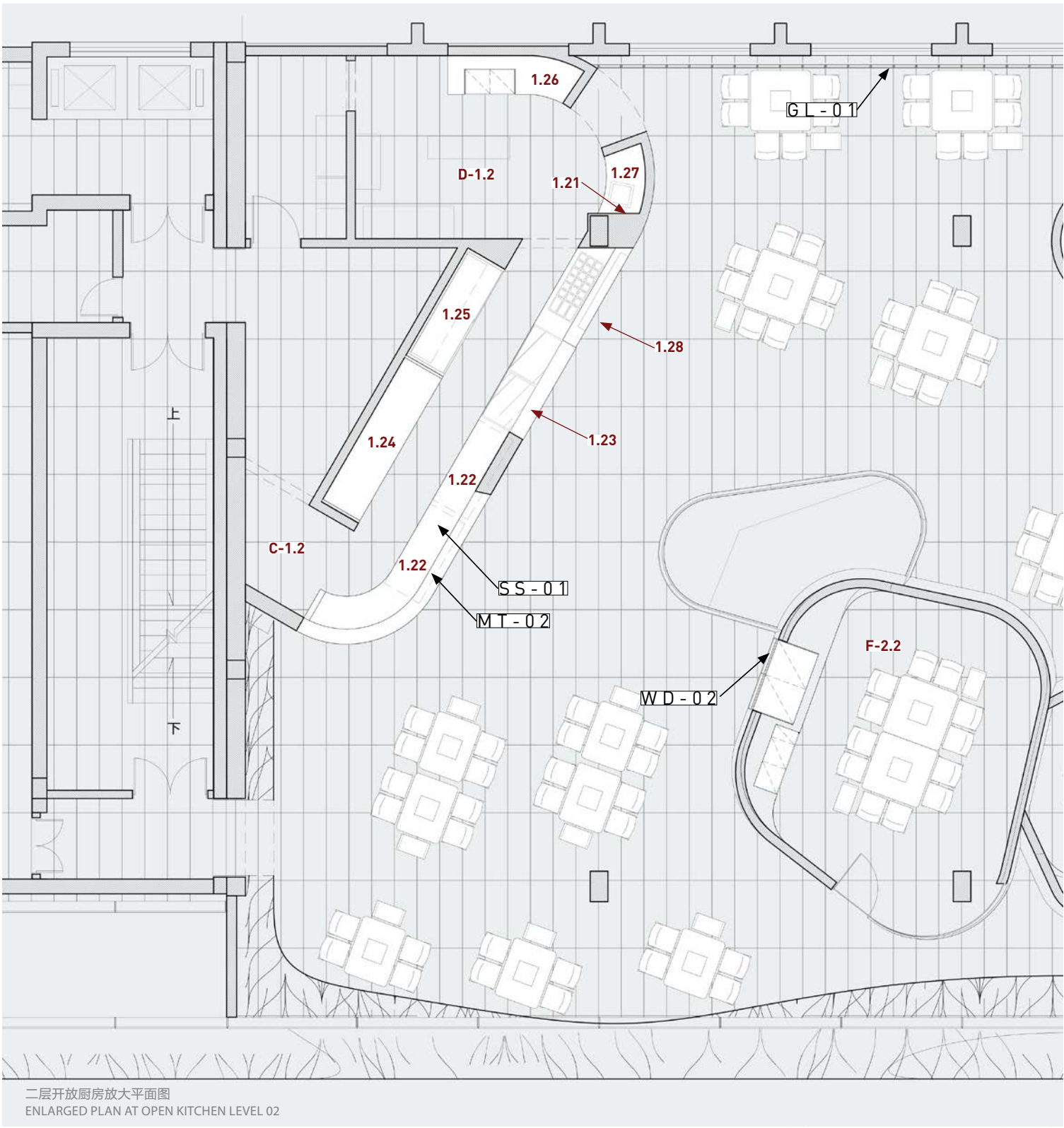


1-1 剖面图
1-1 SECTION



2-2 剖面图
2-2 SECTION

- 功能 | PROGRAM LEGEND**
- B1.2 主就餐区 | MAIN DINING
 - C1.2 开放厨房 | OPEN KITCHEN
 - 1.21 洗手池 | handwash spot
 - 1.22 冰柜 | counter fridge
 - 1.23 食材展示 | cattle showcase
 - 1.24 多层冰箱 | multideck fridge
 - 1.25 4开门冰箱 | 4 doors fridge
 - 1.26 取汤机 | soup machine
 - 1.27 橱柜 | cupboard
 - 1.28 原材料展示 | source display
 - D1.2 备餐区 | PREPARATION AREA
 - F1.2 8人餐桌 | 8 pax PDR
 - F1.3 10人餐桌 | 10 pax PDR
 - F2.2 12人餐桌 | 12 pax PDR
- 材料 | MATERIAL LEGEND**
- 室内材料 | INTERIOR MATERIAL**
- PT-01 白色涂料 | Off-White Paint
 - PT-02 黄色涂料 | Yellow Paint
 - VP-01 威尼斯漆 | Venetian Plaster
 - GL-01 U型玻璃 | "U" Glass
 - GL-02 波纹玻璃 | Corrugated Glass
 - GL-03 玻璃栏板 | Glass Guardrail
 - 地面材料 | Floor Material
 - ST-01 水磨石砖 | Terrazzo Tile
 - 吊顶材料 | Ceiling Material
 - WD-01 木制吊顶 | Wood Suspended Ceiling
 - MT-01 白色金属网 | White Metal Mesh
 - SC-01 金属吊顶 | Stretch Back-lit Ceiling
 - 家具材料 | Furniture Material
 - SS-01 石英石 | Quartz Stone
 - WD-02 木板 | Wood Laminate
 - MT-02 拉丝不锈钢 | Brushed Stainless Steel
- 室外材料 | EXTERIOR MATERIAL**
- 立面材料 | Elevation Material
 - FC-01 木纹涂料 | Panel Wood Pattern Coating



二层开放厨房放大平面图
ENLARGED PLAN AT OPEN KITCHEN LEVEL 02



铝板吊顶
VIEW OF CEILING



穿孔板细节
VIEW OF PERFORATED PANEL



一层用餐区
1ST FLOOR DINNING AREA



功能 | PROGRAM LEGEND

- A-1 前台接待 | RECEPTION DESK
- A-2 展示区域 | DISPLAY AREA
- B-1.1 主就餐区 | MAIN DINING
- B-2.1 等候区 | WAITING AREA
- B3 公共楼梯 | PUBLIC STAIR
- C1.1 开放厨房 | OPEN KITCHEN
- E1 储藏间 | STORAGE
- E1.1 衣帽间 | COAT STORAGE
- E4 电梯 | ELEVATOR

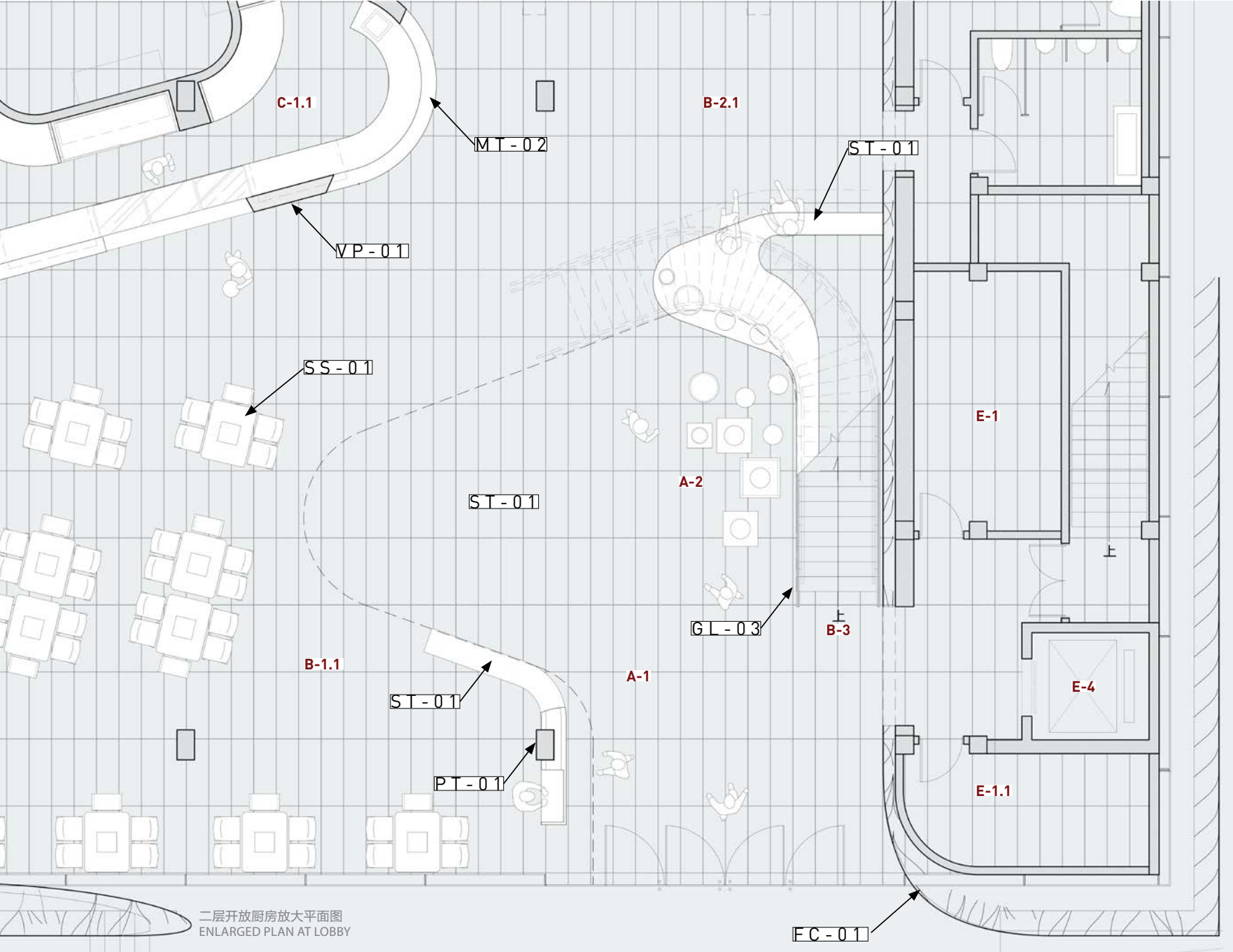
材料 | MATERIAL LEGEND

室内材料 | INTERIOR MATERIAL

- 隔墙材料 | Wall/Partition Material
- PT-01 白色涂料 | Off-White Paint
- PT-02 黄色涂料 | Yellow Paint
- VP-01 威尼斯漆 | Venetian Plaster
- GL-01 U型玻璃 | "U" Glass
- GL-02 波纹玻璃 | Corrugated Glass
- GL-03 玻璃栏杆 | Glass Guardrail
- 地面材料 | Floor Material
- ST-01 水磨石砖 | Terrazzo Tile
- 吊顶材料 | Ceiling Material
- WD-01 木制吊顶 | Wood Ceiling
- MT-01 白色金属网 | White Metal Mesh
- SC-01 金属吊顶 | Back-lit Ceiling
- 木制材料 | Millwork Material
- SS-01 石英石 | Quartz Stone
- WD-02 木板 | Wood Laminate
- MT-02 不锈钢 | Stainless Steel

室外材料 | EXTERIOR MATERIAL

- 立面材料 | Elevation Material
- FC-01 涂层板 | Pattern Coating Panel



设计通过有机的冲孔铝板天花格栅统一内部空间，通过控制格栅密度、高度和尺寸，生成的空间被赋予了不同的深度，如同置身于湍急的河流中，带来空间的纵深感。

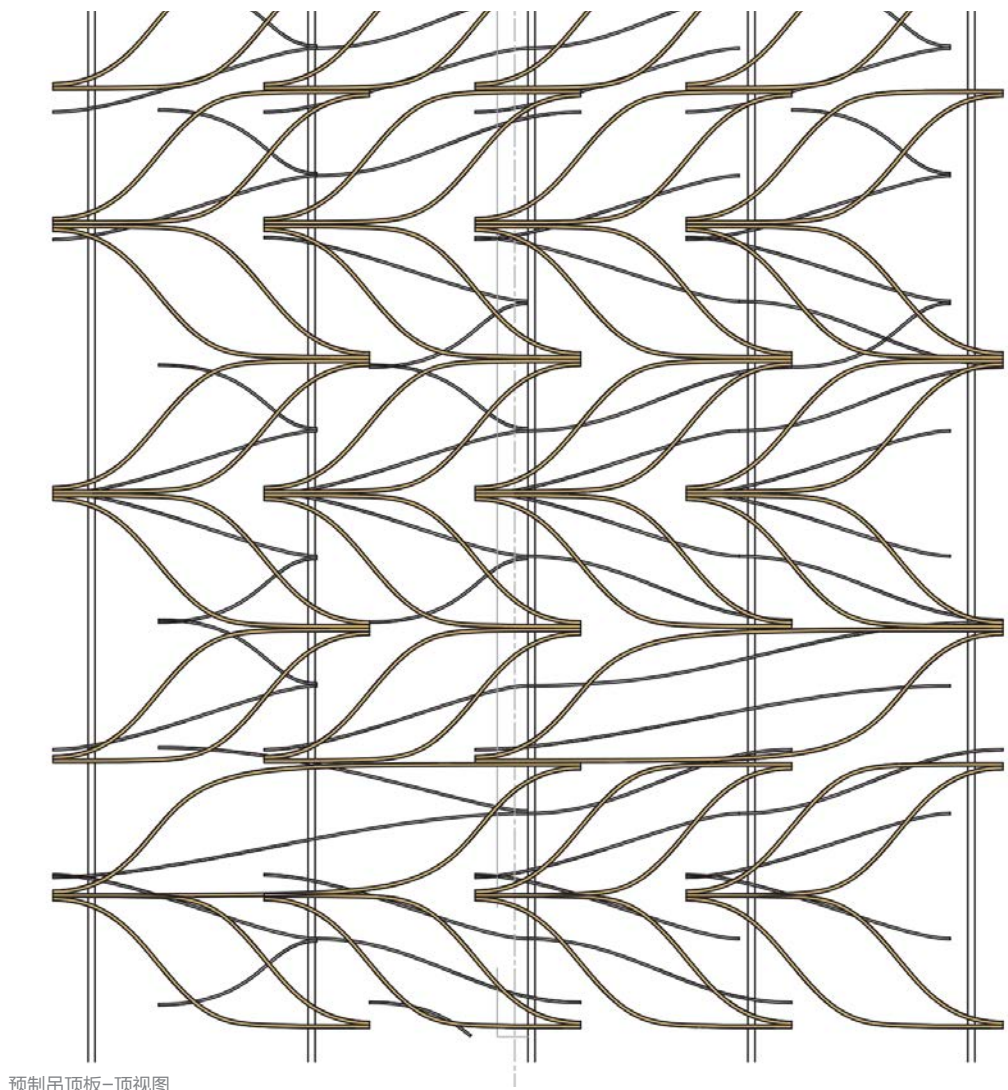
室内的设计同样也反映在建筑的外立面。外立面在入口处被轻轻抬起，流畅的线条与外立面相接，使室内外保持风格统一。内部和外部界面视觉上的延续，也给予沿街面动态的变化，产生室内外空间的互动。

The third strategy involved the design of an organic lattice ceiling that varied in. Through varying the density, height, and size, the ceiling panels we were able to transform the transparency, creating a sense of depth to space as you move through.

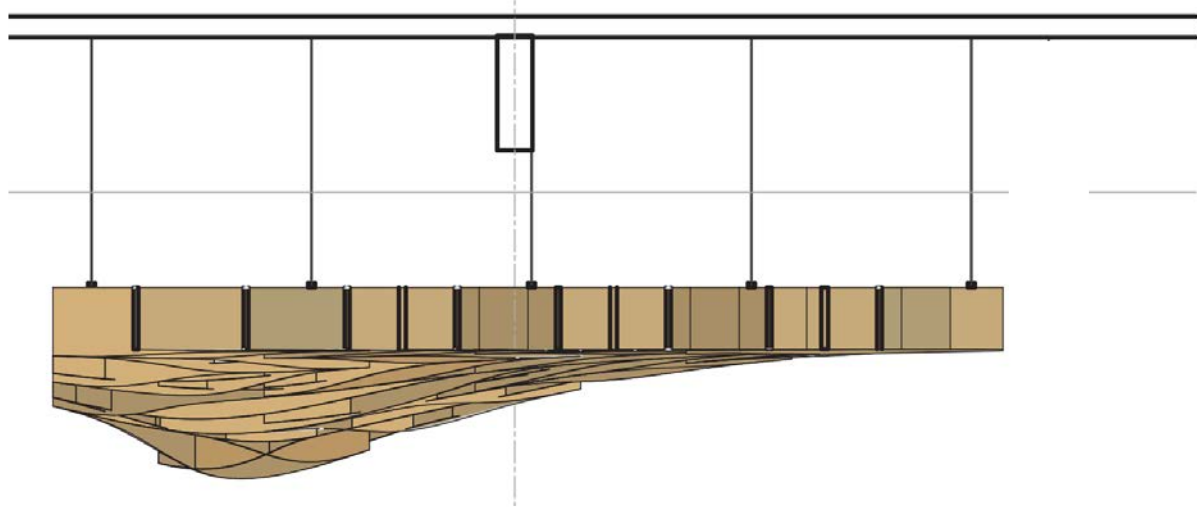
For the exterior façade, we extended the language of the interior ceiling by creating a sun-screen to protect the southern façade and give changing transparency and visual texture to the building. The façade panel has 4 types and was clipped to a supporting structure and supported off the glass curtainwall.

Together the Ceiling and façade metal panels give a visual identity to the restaurant and unify the design. Located along a primary axis road of the city, the building itself is the primary signage, creating visual interest to welcome guests to visit the restaurant.

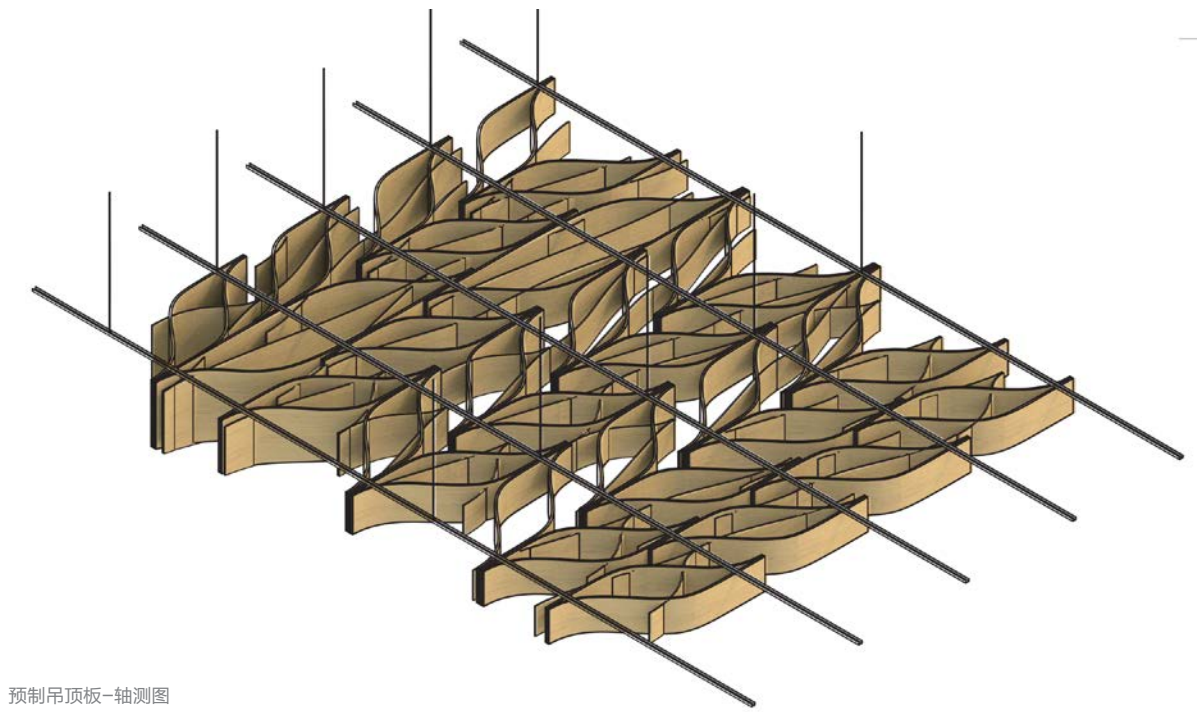




预制吊顶板-顶视图
PREFABRICATED PANELS MODEL - TOP VIEW



预制吊顶板-侧视图
PREFABRICATED PANELS MODEL - SIDE VIEW



预制吊顶板-轴测图
PREFABRICATED PANELS MODEL - AXON

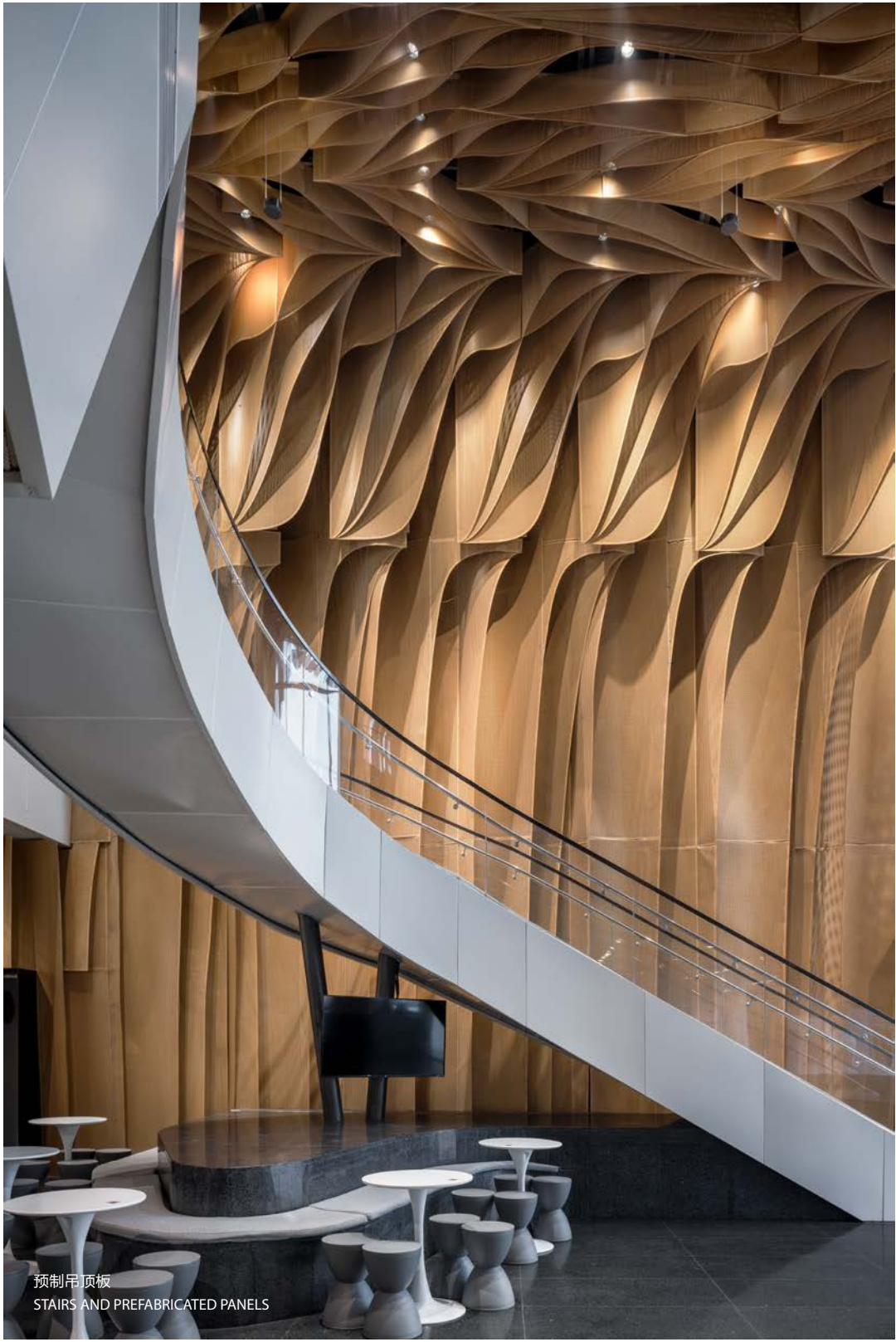
BANU FLAGSHIP RESTAURANT 巴奴旗舰餐厅



预制吊顶板
PREFABRICATED PANELS



预制吊顶板
PREFABRICATED PANELS



预制吊顶板
STAIRS AND PREFABRICATED PANELS



二层中庭
2ND FLOOR ATRIUM