

Project Name: The Exchange Bar, Shanghai Blackstone Apartment

Design Studio: NONG STUDIO

Website : www.nong-studio.com

mail : 17nong@nong-studio.com

Completion year: 2020.10

Area : 150 sqm

Address: Blackstone Apartment, Shanghai, China

Photographer : Chasing Wang

Chef designer : Chasing Wang, Neal Zhu

Design Team : Dafu, Fan Zhang , [Ita]Alessia Di Meglio, Weiquan Chen

FF&E Consultant : NONG STUDIO

Lighting Consultant : Fager Yang

Client : LL Capital

Main materials : Malay paint, Bespoke wallpaper, Black flooring tile, Handmade tile, Ancient mirror, Handmade plaster column cap, Bespoke metal curtain, Metal mash, Metal tube, Stainless steel, Bespoke bronze knob, Dark wood veneer, Black oak veneer, Mother-of pearl inlay, Marble, Bespoke fabric and rag, Vintage Chinese abacus.

DESCRIPTION

There is a memory called the Bund, and a style called Old Shanghai.

The Blackstone Apartment is in the former French Concession. It marks the modern architectural classics of Shanghai with an eclectic style. It was known as the "most luxurious apartment" in Shanghai at that time for its luxurious configuration. It was also sought after as the most popular social place for its famous and distinguished residents.

The BLACKSTONE EXCHANGE takes its design language from the traces of Shanghai in the 1930s, where it is located. It was flashy and gorgeous, lazy and mysterious, unique and unusual, introverted and self-sustaining. It accepts the infiltration of the western culture but stubbornly maintains the national tradition.

The entrance of the bar is set on the side of the building. The long walkway paved with mosaic tiles seems to fade away from the hustle and bustle of the flashy world. The bar owner seemed to only search for friends thus setting up a mechanism outside the door. After finding the key to pass, the door slowly opened.

Through the long walkway, the fully open symmetrical space after entering the bar makes people suddenly enlightened. The top arc shape coincides with the iconic curved balcony on the facade of the Blackstone Apartment. The wall behind the wooden bar is decorated with various baroque stigmas. Under the background of the mottled red bricks, a sense of chaos in time and space is created. It makes people feel as if they were in an Italian family tavern. It feels mysterious and historical.

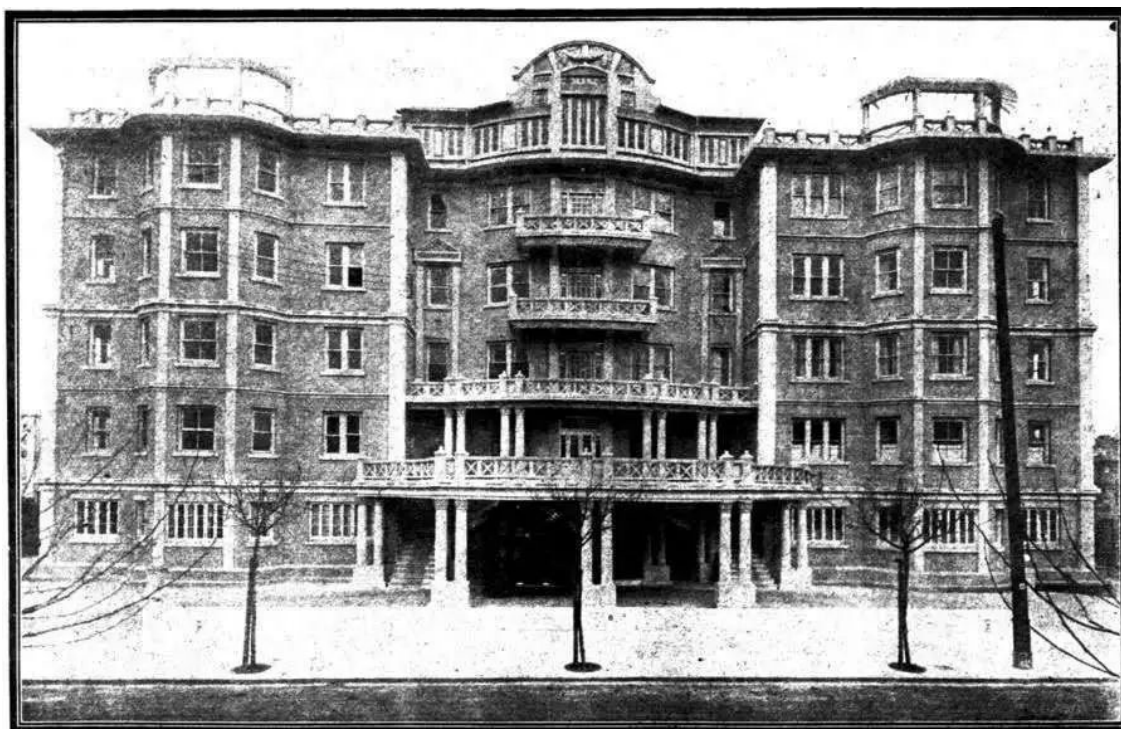
The visual centre of the entire space is the golden turntable. It is the centre of the stage on the central axis. The shape coincides with the turntable of the bank vault, which illuminates the "exchange" from its name. However, there are only bottles of whiskey on the axis. Like a whirlpool, people can't help but sink. What is even more unexpected is that the double-sided sights of this golden turntable. The sight from the stage cannot be crossed. However, from the bathroom on the other side, each corner of the hall can be seen through the turntable. It is secret and exciting.

The two boxes behind the bar on the side of the lobby are extracted from banks. One is from the western vault, and the other is from the Chinese account room. The aisle becomes a long corridor of the vault. Stainless steel compartments of the "vault" store the wines from patrons. The wall of the "account room" is decorated with abacuses. The abacus beads form the cloudiness through the light and shadow area. This feeling adds a few more mysteries to the atmosphere of the box.

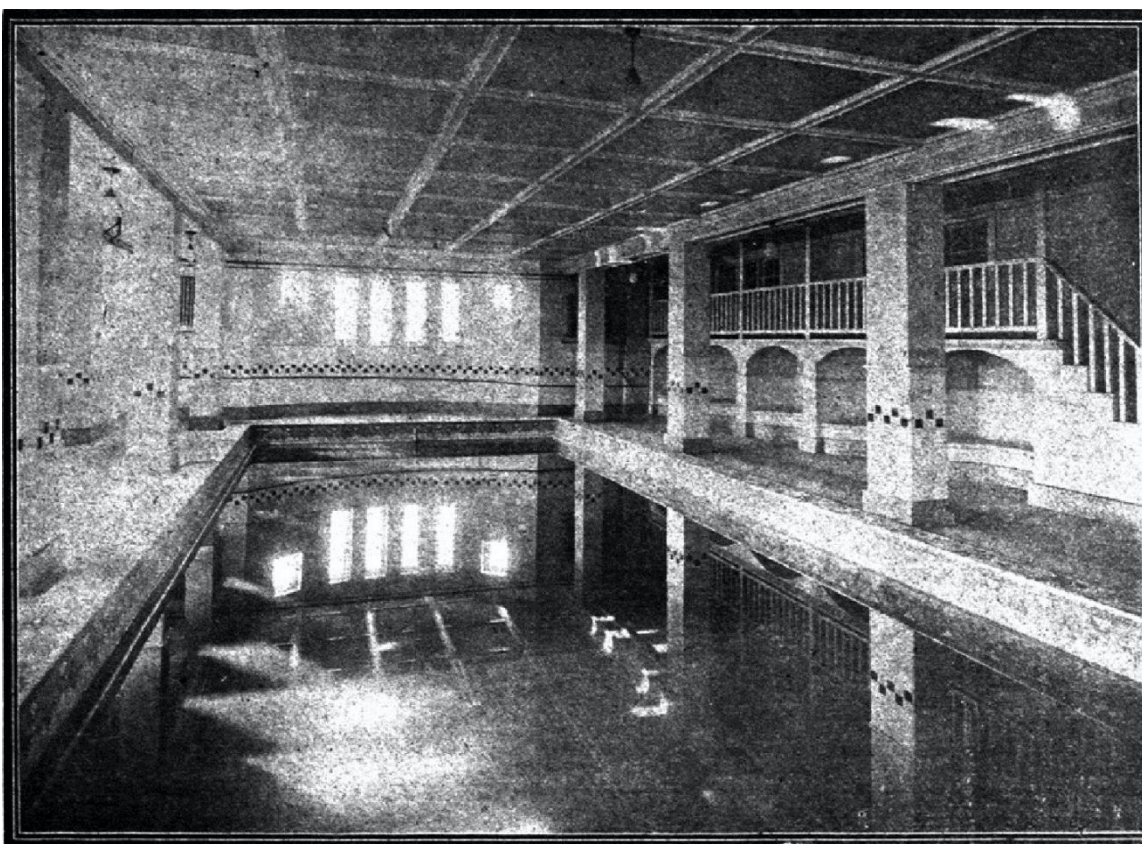
The bar is everywhere to tell you the name "exchange" and the origin of the bar owner. It tells from the old newspaper at the entrance to the dining table covered with coins. It also tells from the vault shape of the stage to the two private boxes of the vault and the account room. This mysterious reservedness beyond the extravagant seems to take you to the heyday of Shanghai in the 1930s. Nearly a century changed Shanghai a lot. Even so, nothing seems to have changed.

DESCRIPTION(COMPACT VERSION)

The BLACKSTONE EXCHANGE is in the Blackstone Apartment, which is in the former French Concession. It marks the modern architectural classics of Shanghai with an eclectic style. Its design language derived from the traces of Shanghai in the 1930s, when and where it is located. It was flashy and gorgeous, lazy and mysterious, unique and unusual, introverted and self-sustaining. It accepts the infiltration of the western culture but stubbornly maintains the national tradition. There has the golden turntable with double-sighted views. There also has two private boxes with the elements from the Western vault and the Chinese account room. All these scenes show a mysterious reservedness beyond the extravagant.



Historical exterior photo of Shanghai Blackstone Apartments.



Historical interior photo of Shanghai Blackstone Apartments.



The name "BLACKSTONE EXCHANGE" is derived from the stock exchange. This is because the bar owner is from Wall Street, and also coincides with the era background of Blackstone Apartments.



From the street side of the Blackstone Apartments, people can see the bright lights in the central area of the bar through the windows.



From the street side of the Blackstone Apartment, people can see the golden turntable in the center of the stage through the windows.



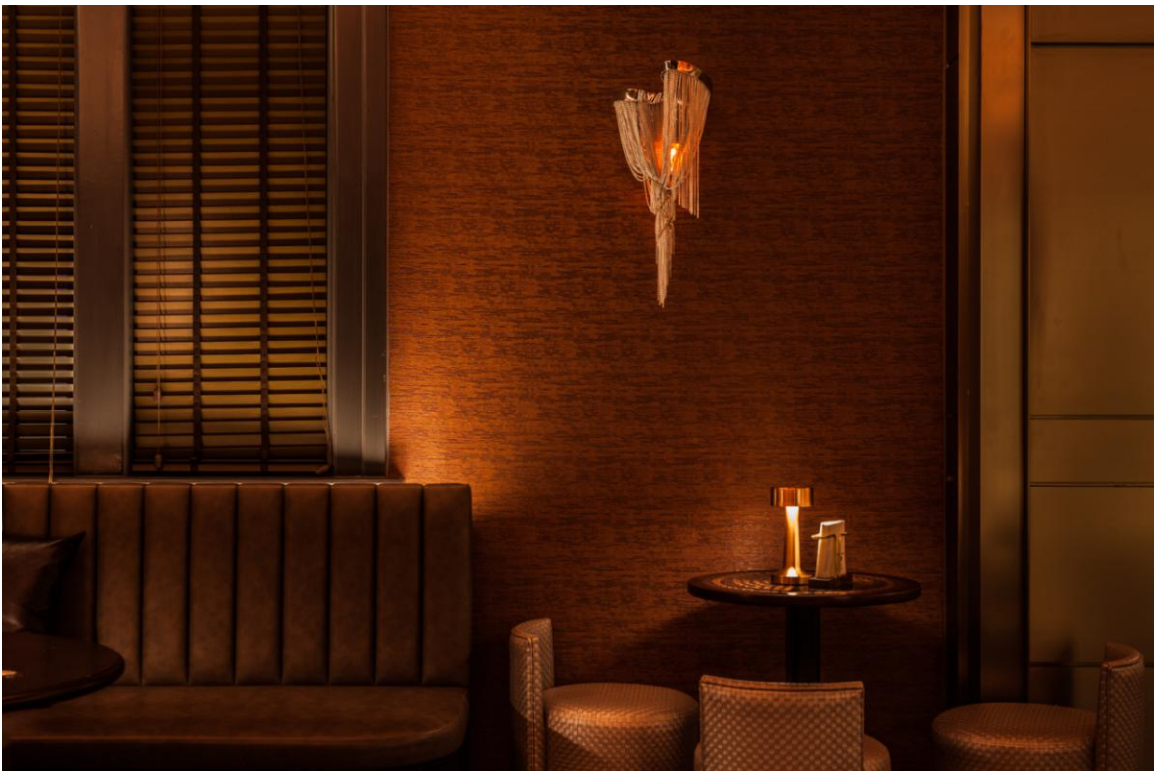
The mechanism at the entrance of the bar is an old New York Times newspaper. After finding the key to pass, the door slowly opened.



The visual centre of the entire space is the golden turntable. It is the centre of the stage on the central axis. The shape coincides with the turntable of the bank vault, which illuminates the "exchange" from its name.



The centre area is a symmetrical space. The top arc shape coincides with the iconic curved balcony on the facade of the Blackstone Apartment.





There are bottles of whiskey on the axis. Like a whirlpool, people can't help but sink.



The wall behind the wooden bar is decorated with various baroque stigmas. Under the background of the mottled red bricks, a sense of chaos in time and space is created. It makes people feel as if they were in an Italian family tavern. It feels mysterious and historical.



The golden turntable derived from the bank vault door. With a soft strip of light on the outer ring, and an LED light on the inner ring to brighten the bottle from the bottom, the turntable presents a crystal clear visual sense.



罗马柱头装饰采用底部打光的方式，既可以将玻璃酒瓶呈现晶莹剔透的视觉感，又可以营造历史神秘感。

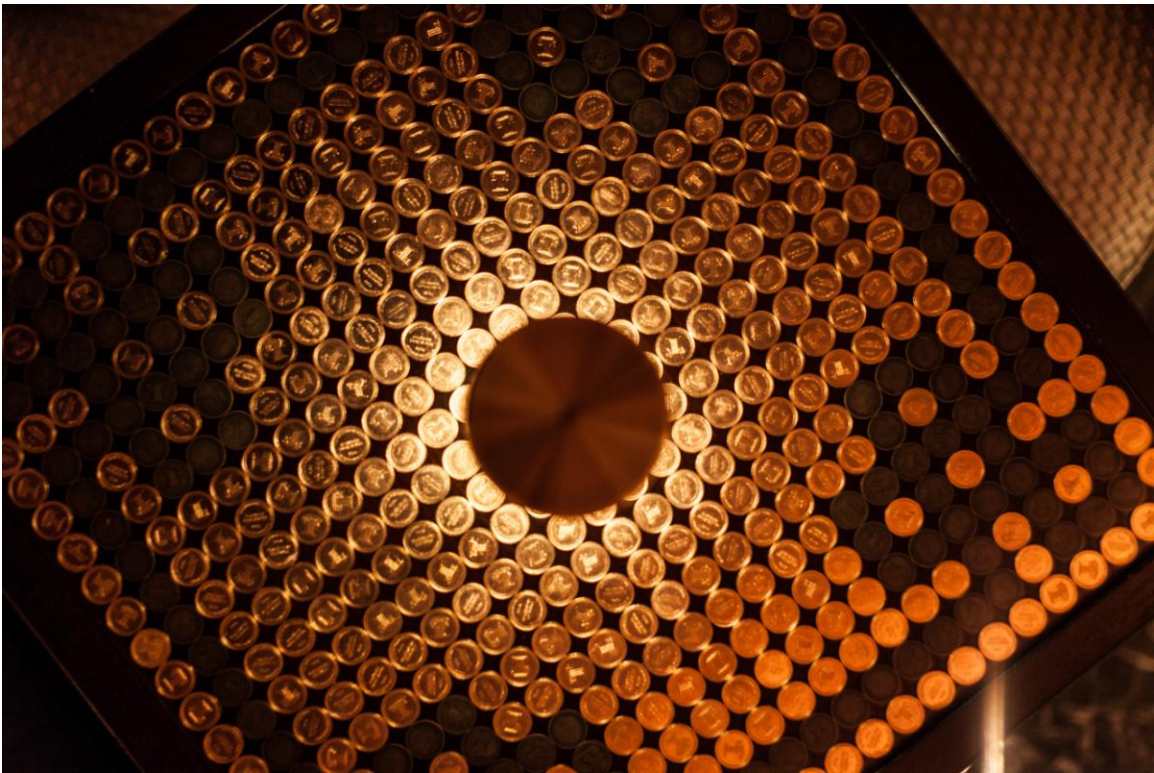
Roman stigma decoration adopts the method of lighting at the bottom, which can not only present a crystal clear visual sense of the glass bottle, but also create a sense of historical mystery.



The countertops of all the wine tables in the bar are decorated with old coins, just like a chess board.



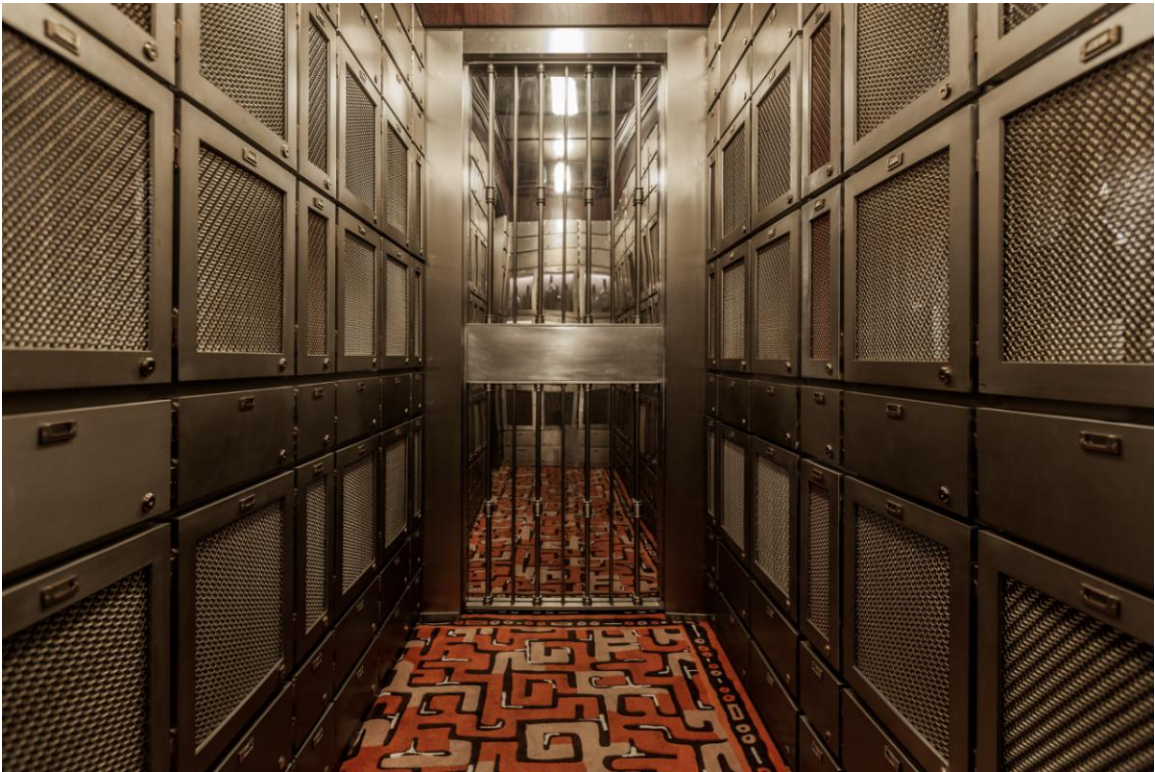
A golden turntable with a whisky bottle embedded on the shaft.



A wine table decorated with old coins in two colors.



The golden turntable has double-sided sights. The sight from the stage cannot be crossed. However, from the bathroom on the other side, each corner of the hall can be seen through the turntable. It is secret and exciting.



通往包厢的走廊被打造成保险库的长廊，不锈钢的一个个暗格中存放着各自客人的存酒。
The aisle becomes a long corridor of the vault. Stainless steel compartments of the "vault" store the wines from patrons.

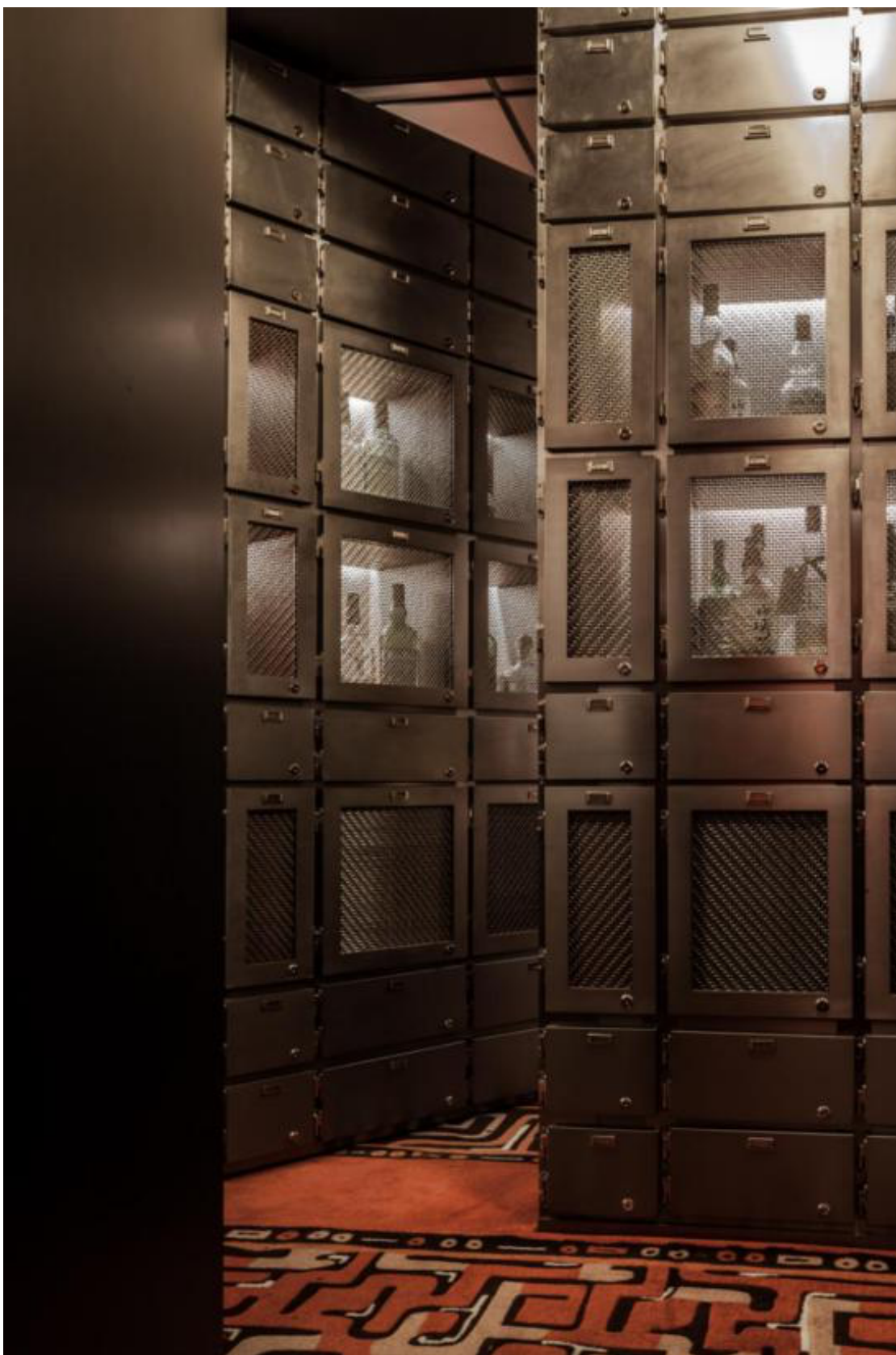


The contrast between the stainless steel material and the red velvet material shows a sense of retro.



不锈钢保险柜内客人的存酒。

The wines from patrons stored at stainless steel compartments.



西方保险库主题的包厢入口。

Entrance to the western vault-themed box.



The wall of the Chinese-style box is decorated with abacuses. The abacus beads form the cloudiness through the light and shadow area. This feeling adds a few more mysteries to the atmosphere of the box.



The wall of the Chinese-style box is decorated with abacuses. The abacus beads form the cloudiness through the light and shadow area. This feeling adds a few more mysteries to the atmosphere of the box.



The lights of the Chinese-style box come from the scattered light behind the abacus wall, creating a mysterious atmosphere.



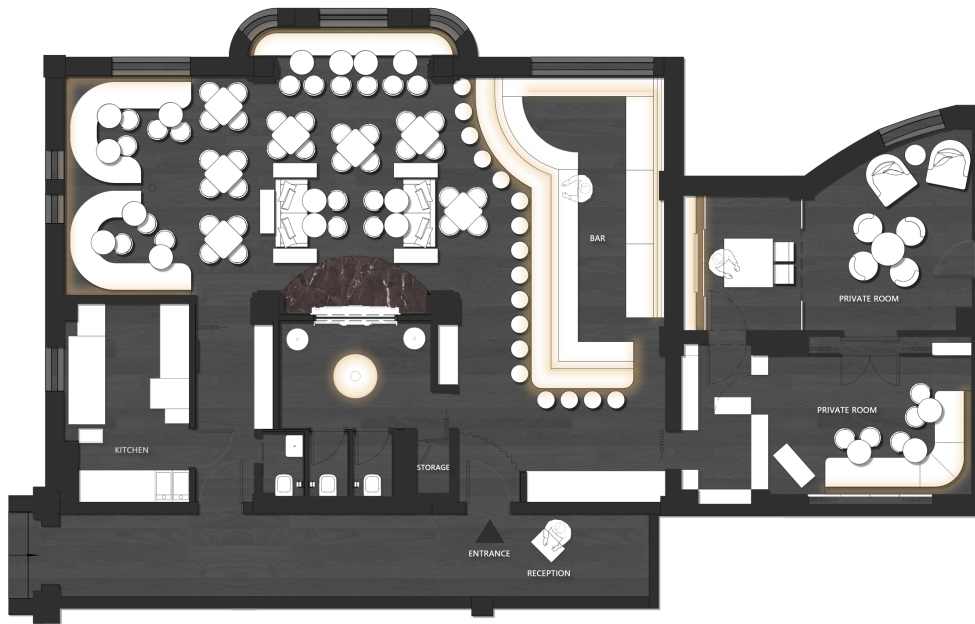
The Western-style box derived from the vault.



The wall of the vault is decorated with antique bonds. In the front is a stainless steel fence, which creates the sense of sight of a bank pawn in the 1930s.



Brass table lamp in the shape of a retro kerosene lamp.



Floor plan