

Taylor_Smyth **architects**







**Newnham Campus
Food Hall
Seneca College**

SIZE:

Renovation: 28,718 sq. ft.;

Addition: 6,400 sq. ft.;

Total Area: 35,118 sq. ft.

LOCATION:

North York, Toronto, Canada

COMPLETED:

2021

PROJECT TEAM:

Robert Smyth, Partner-in-Charge;

Brian Harmer, Project Architect;

Suzan Selçuk, Interior Designer

IMAGES:

Tom Arban Photography Inc.

LOCATED AT THE HEART OF SENECA COLLEGE'S NEWNHAM CAMPUS, THIS COMPLEX RENOVATION AND ADDITION PROJECT CONVERTED A TRADITIONAL DESTINATION COLLEGE CAFETERIA AND SMALL FOOD COURT INTO A DYNAMIC LIGHT FILLED FOOD HALL AND CENTRAL GATHERING SPACE, DOUBLING THE SIZE OF THE EXISTING CAFETERIA THROUGH NEW CONSTRUCTION AND RECONFIGURATION OF EXISTING SPACES.

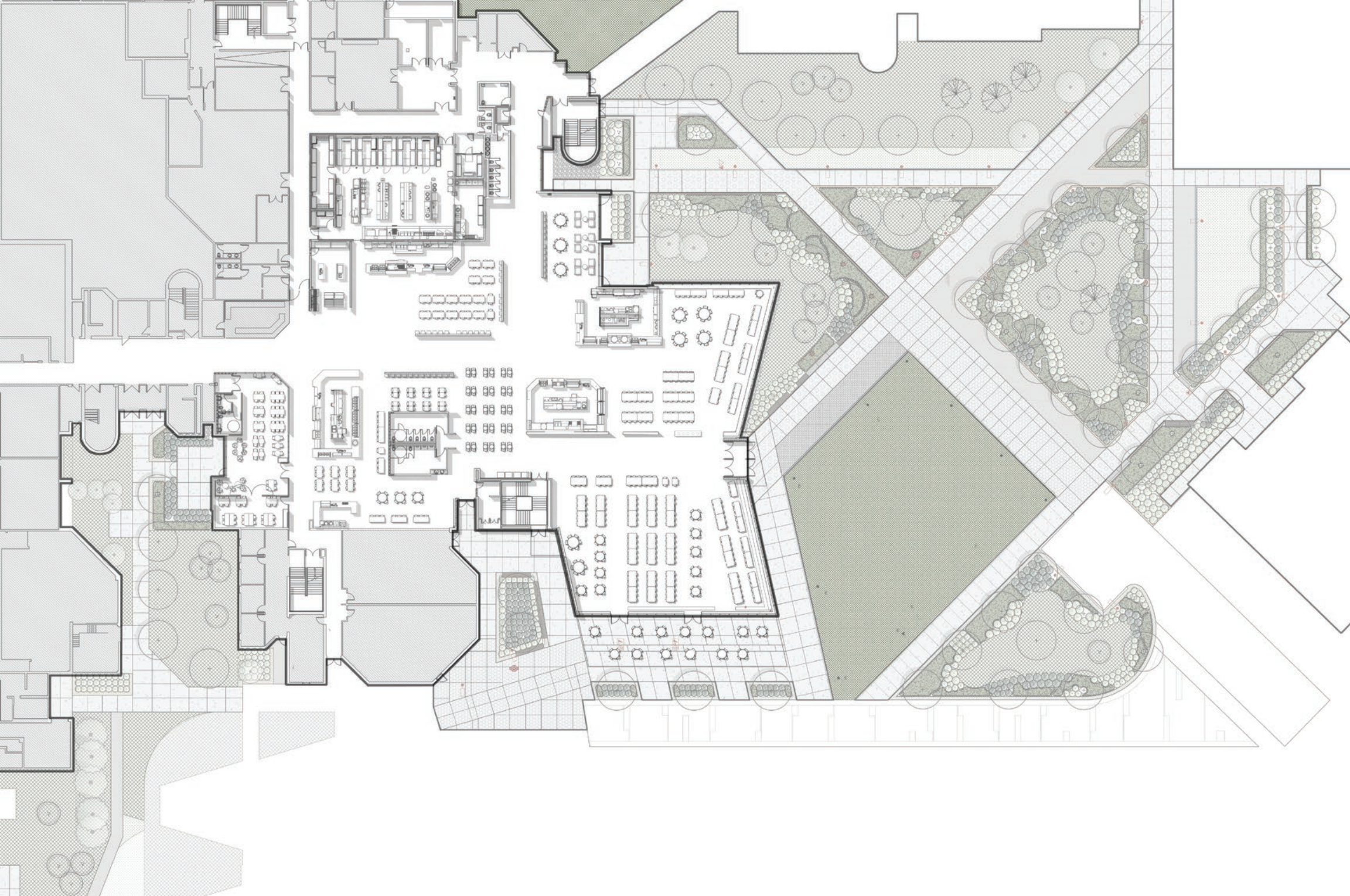
The existing campus is defined by a series of buildings connected by a common corridor that originally terminated at a traditional student cafeteria. Taylor Smyth redirected the corridor through the old cafeteria to create a lively pedestrian street lined with food stations, a variety of flexible seating options, banquette seating, and flexible public gathering spaces that can also serve as small event spaces for art shows, buskers, art exhibits etc.

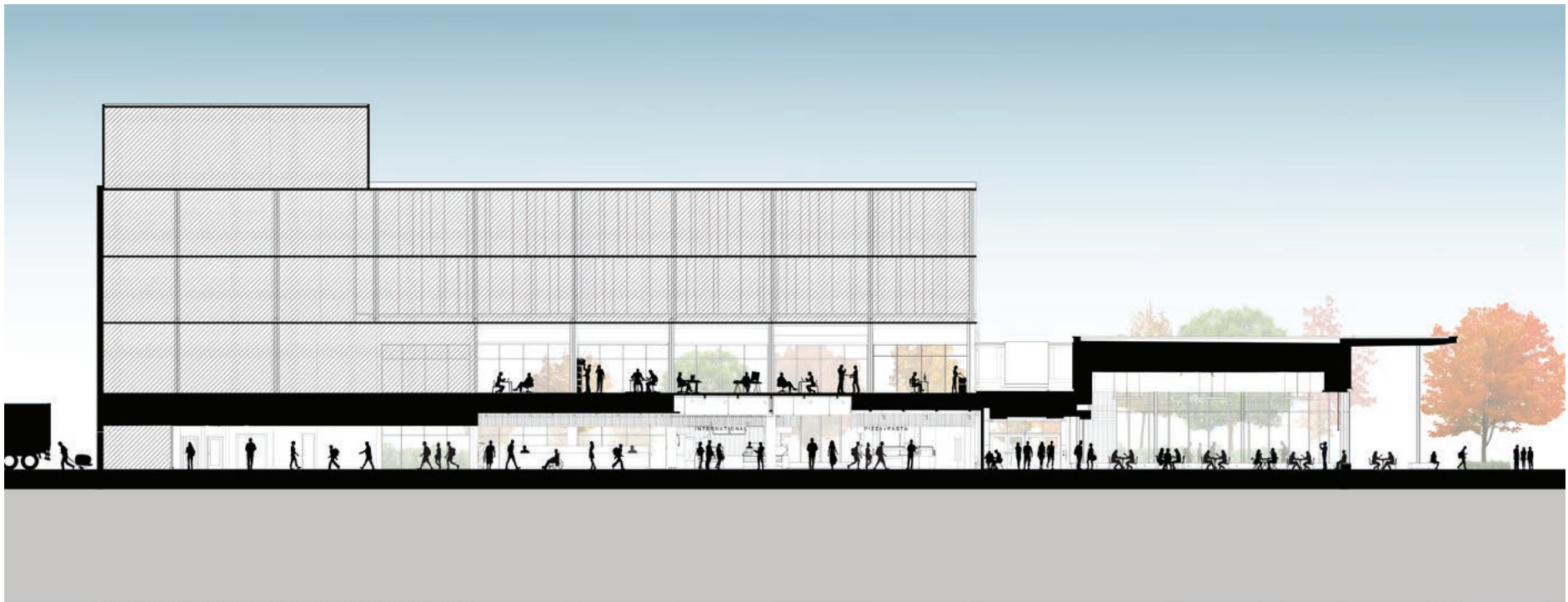
The 35,000 sq. ft. project includes a 6,000 sq. ft. multi-purpose Dining Hall addition that defines and offers wonderful views of a newly created landscaped Quad and features a generous south facing covered outdoor terrace. The new Dining Hall, equipped with two large projection screens, motorized blinds, full AV media capability, and a large format LED screen, provides Seneca with a multi-purpose space of a scale not offered elsewhere on Campus.

The new Food Hall offers students a wide selection of healthy food options from five large food stations and a freestanding market selling fruits, vegetables, fresh and frozen food options, and a myriad of other products. The stations include new state-of-the-art kitchen equipment designed to respond to changing food tastes over time without the need to make major equipment changes. New electronic Point of Sale stations offer today's mobile students a variety of ways to order and pay for food.

The project was undertaken in 3 phases, mostly while the existing cafeteria was occupied.











PIZZA+PASTA

INTERNATIONAL

































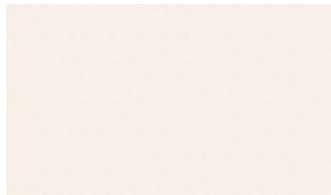
Material Palette



Clodbust Concrete
Caesarstone



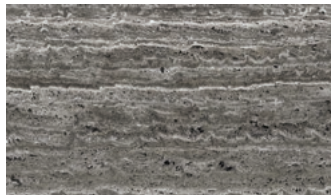
Pietra Grey Bocciardato
Stonetile



Silver White Polished
Vicostone



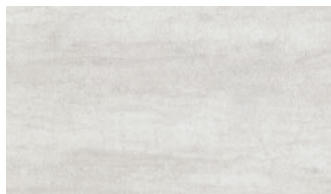
Solo M Type 8
Certain Teed Architectural Products



Tipos Ocean, matte finish
Stonetile



Cross Piece Wood Grille
Certain Teed Architectural Products



Pietra Di Savoia Perla
Stonetile



Soundscape Blades: 3920
Armstrong Ceilings

Lighting



EXO 6 Pendant
Tech Lighting



Cycle
Eureka



ID+ 4.5" Cylinder
Focal Point



Fluid
Muuto







Contact

Kian Tang

Director, Marketing and Communications

t 416.968.6688 x 232

f 416.968.7728

ktang@taylorsmyth.com

taylorsmyth.com