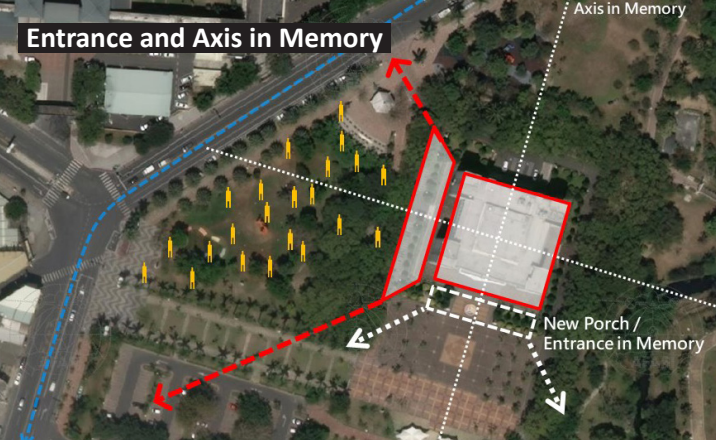


Pingtung Public Library

(extension and renovation)



Transforming an enclosed building into a library with transparency, fluidity and vitality.

Location : Pingtung, Taiwan
Site Area : 59289.53 m²

/ Original Building

Building Area : 1233.19 m²
Total Floor Area : 7142.24 m²
Number of Stories : 6 + 1 (basement)
Construction Material : Reinforced Concrete
Complete Time : 1983/3

/ Extension and Renovation

Building Area : 1545.45 m²
Total Floor Area : 7654.72 m²
Number of Stories : 6 + 1 (basement)
Construction Material : Steel & Reinforced Concrete
Overall Design Time : 2017/4 ~ 2018/2
Overall Construction Time : 2018/11 ~ 2020/2

The existing Pingtung Public Library, originally built in 1983, is a typical example of public buildings built before the democratization of Taiwan. Among other things, the most problematic of all is that its main entrance has no direct connection to the main street, making the building almost hidden from the city.

Therefore, we propose a new and transparent lobby and attach it to the western side of the existing building. At urban scale, it turns the orientation 90 degree to face the city and reconnects the library to citizen's daily life; at architectural scale, it serves as a big window linking the interior to the exterior, showing the activities in the library to the city and also takes in the surrounding landscape, bringing vitality to the interior atmosphere.

The new lobby is a parallelogram open plan supported by continuous V-shaped steel structure. Several "Activity Islands" are arranged with triangular elements, including a sunken seating area, a floating mezzanine, and a pair of suspended lanterns. By the use of form, materials, colors, and social-cultural meanings, the new lobby is a modern interpretation of aboriginal dwelling "Stone Slab Houses" of Pingtung.



Original

Existing plans : Red lines indicate the removal of architectural elements

existing 1F plan

Renovated

1 Exhibition
2 Lobby
3 Café
4 Reception
5 Foyer
6 Entrance
7 Information
8 Bank
9 Children's area
10 Family section
11 South Hall
12 Reception

0 5 10 15 m

1F plan

Create a visible hierarchy of void, and connect the different programs via the spiral

This architectural floor plan shows a central rectangular area shaded in red, with a large 'X' drawn across it. The plan is surrounded by a corridor system with various rooms and doors. A north arrow is located at the top center of the plan.

The new lecture hall is transformed from solid to void, implying an enclosed core.

existing 4F plan

4F plan

- 1. Foyer
- 2. Control Room
- 3. Auditorium
- 4. Office
- 5. Multi-cultural Collection
- 6. Overpass
- 7. Young Adult's Atrium
- 8. Taiwan Literature
- 9. Maker Space
- 10. General Libr
- 11. South Porch
- 12. Senior's Atrium
- 13. Children's Lib
- 14. Parking
- 15. Mechanical
- 16. Local Literature

A large, modern interior space, likely a library or community center. The space is characterized by a high ceiling with a series of horizontal wooden slats. A prominent feature is a large, spiral staircase with a metallic finish, which winds around a central vertical axis. To the right, a long, low wooden bookshelf is filled with books, and a person is seen browsing. In the foreground, a person is sitting on a dark, modern sofa, reading a book. The floor is made of large, dark tiles. The overall atmosphere is bright and open, with natural light coming from large windows on the left side.

