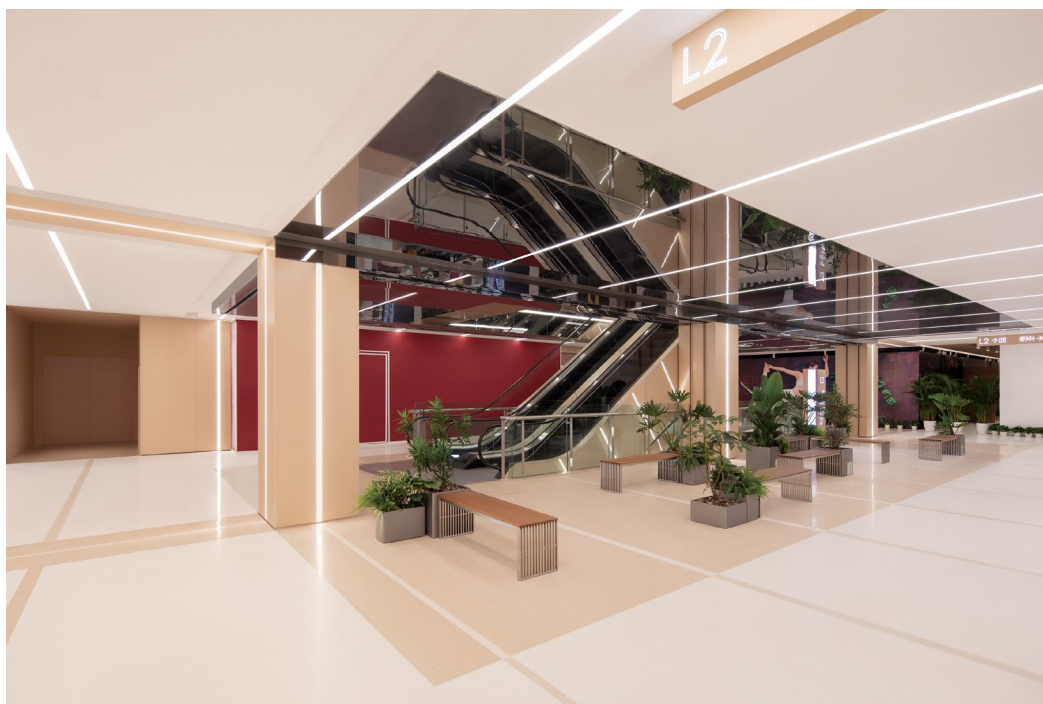


PRESS RELEASE NOVEMBER 1, 2022

# CLOU architects Complete Interior Renovation of CapitaMALL Wangjing



## Revitalize the Beacon of Wangjing Community

CapitaMall Wangjing, the first large commercial complex developed by CapitaLand in Beijing's Wangjing area, has brought commercial prosperity to the Wangjing community since its opening in 2006. In 2021, CLOU architects won the design competition and collaborated with CapitaLand to renovate this long-standing community beacon, responsible for the overall space branding upgrades of CapitaMALL Wangjing.



Before

As a model of urban regeneration as the domestic consumption environment changes, the revamped CapitaMall Wangjing Phase II has been given a new lease of life and reopened on 1st October 2022.



The renovation of this project mainly focuses on the atrium of three floors and the public area. CLOU hopes to create a clean and elegant space to serve the demand for the spacial experience and aesthetics of customers nowadays.



a contemporary three-dimensional network of luminous rays

The original atrium could not be drastically changed due to structural constraints, CLOU started from the existing central columns by adopting a strategy of highlighting and strengthening the column network. A linear 'light grid' connects structural columns and ceilings into a contemporary three-dimensional network of luminous rays, dissolving the abrupt column and stuffy horizontal space in the original building. Combining the existing structures and the art of lighting provides customers with a modern shopping experience that moves with the lights.

Light is used as the main design element throughout the whole space, combining different materials and textures to give the space a unique identity. The anodized aluminium panels and linear lighting create a light and shadow box at the entrance foyer, stimulating the visitor's desire for exploration from the moment they enter.

CLOU's design of combining mirrors and lighting, increases the breathability of the small-scale atrium space, enriching the visual experience, and giving visitors a moment of imagination and space to rest. The linear lights at the escalator form a visual focal point, that attracts and guides the visitors to explore upwards.



The space is dominated by white and apricot colours, creating a breathable and elegant atmosphere. The neutral and soft colour palette makes an inclusive, warm and calm space, catering to the preferences of customers of all ages. The apricot and white artificial stone with painted aluminium panels, create a subtle contrast yet harmonious blend with the mirror and stainless steel metallic colours, creating rich layers of the space.

CLOU has also led the design of the space signage and wayfinding, with details that continue and compliments the interiors. The design of the shopping index signage is highlighted with a three-dimensional shape, using mirrored and stainless steel and apricot materials, and a simple squared font.

The use of neon light strips in the bathroom adds a touch of playfulness and vibrancy to the white and apricot tone. The signage design blends perfectly with the overall interior environment, providing clear and esthetical guidance.

CapitaMALL Wangjing has also been awarded LEED Gold certification, after the renovation it will continue to serve the needs of the surrounding community as a beacon of the area. With consistent precious in detail and quality, CLOU has transformed the old mall into an aesthetical shopping and social destination that provides a relaxing, intimate, and classy space for the community.

Project Name: CapitaMALL Wangjing

Designer: CLOU architects

Client: Capitaland

Scope: Interior renovation, Signage

Program: Retail

Location: Beijing, China

Size: 4,370 sqm

Status: Completion in 2022

Design Team: Zhao Na, Sebastian Loaiza, Zhao Mengmeng, Liu Rentian, Zhong Yadi,

Ding Qiao, Zhou YINUO, Sun Yuanyuan, Li Yishi, Wang Liangliang, He Ning, Anastasia

Zavarzina, Giovanni Zorzi

LDI: China Institute of Building Standard Design & Research

Interior contractor: Beijing Dongfangxunteng Architectural Decoration Engineering Co., Ltd

Architecture contractor: China Construction First Group Co., Ltd

Facade: China Construction First Group Co., Ltd

MEP: China Construction First Group Co., Ltd

Lighting: KEEY Lighting (Shanghai) Co., Ltd

Signage: Xuzhou Signage Making Co., Ltd

Photography: Xia Zhi

– ENDS –

## ABOUT CLOU ARCHITECTS

**CLOU is an award-winning international design studio with multi-disciplinary expertise in master planning, architecture, interiors, and landscapes. The team design their projects on a variety of scales around community connectors and social spaces.**

At CLOU, a team of more than 65 experienced architects from China and all over the world enjoy working collaboratively and imaginatively on a wide range of projects. Clients include retail and mixed-use developers, residential investors, hotel operators, and governmental and educational institutions. Across design and implementation, CLOU architects strive to create projects that positively influence the people involved in the making, the immediate and extended environment, and the communities that occupy and inhabit them.

## ABOUT JAN CLOSTERMANN

Jan Clostermann is the Principal of CLOU and an award-winning architect with 20 years of international experience. Following his architectural studies at the Technical University in Berlin, Jan received his Diploma in 2001 from the Architectural Association in London.

Before founding CLOU in 2015, Jan collaborated with a Stirling Prize winning practice from their studios in London and Rotterdam, later leading their Singapore, Shanghai, and Beijing offices, and had the opportunity to realise a broad range of projects worldwide.

Since his move to Beijing in 2005, he has conceptualised and delivered numerous high profile mixed-use and retail projects, as well as masterplans and interiors.



## CONTACT INFORMATION

Public Relations:	CLOU architects
Email:	<a href="mailto:media@clouarchitects.com">media@clouarchitects.com</a>
Telephone:	+86 10 8527 0095
Address:	Sanlitun SOHO Tower C Unit 1702 8 Gongti North Road Chaoyang District Beijing 100027

## MEDIA CHANNELS

Website:	<a href="http://www.clouarchitects.com">www.clouarchitects.com</a>
Instagram/twitter:	@clouarchitects
WeChat:	CLOU architects (Scan QR Code)
Weibo:	CLOUarchite

