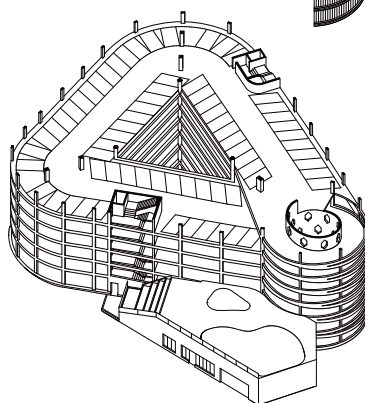
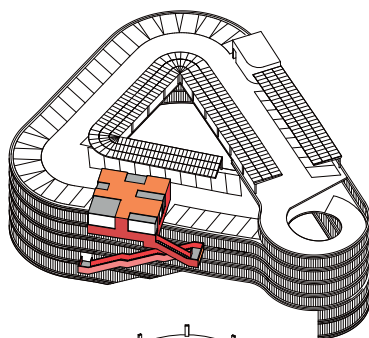


# Q-Park Ravet

Art & Architecture

Chambéry - France



HÉRAULT  
ARNOD  
ARCHITE  
CTURES



July 2022

**Hérault Arnod Architectures**

Grand Paris  
1, rue Meissonnier  
93500 Pantin

+33 (0) 1 48 07 81 40  
[ha-communication@herault-arnod.fr](mailto:ha-communication@herault-arnod.fr)

1

## The Project



**Hérault Arnod Architectures**

Press kit

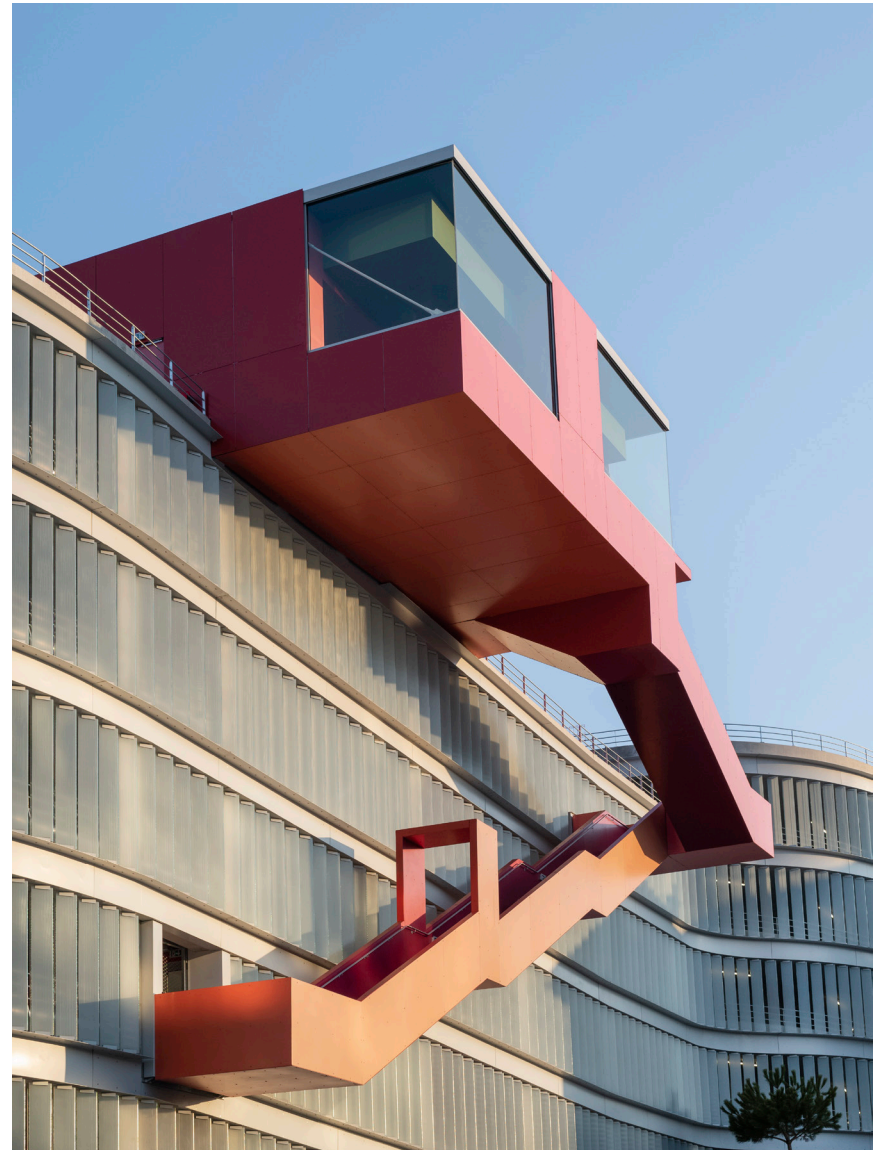
Qpark Ravet

Chambéry - France



© Cyrille Weiner





© Cyrille Weiner

## Q-Park Ravet, Chambéry

By Françoise-Claire Prodhon, art historian

### Background

Isabel Hérault: "The starting point for this project was a competition between parking garage operators, with each of the participants having chosen to associate an architectural design firm. The aim was to build two 500-space parking facility, one at the railway station and the other in downtown Chambéry. Our firm was entrusted with the downtown project, a delicate subject since the allocated land runs right along the rue de Boigne, the city's historic artery.

The Fountain of the Elephants is a delightful focal point contrasting with a portion of Turin arcades, this street built during the first half of the 19th century leads to the castle of the Dukes of Savoy, the city's main monument. Opposite the castle, the perspective of this street converges on the parking garage, with a background view of the mountains."

### Design approach

I.H.: "We worked by taking into account the perspective of the street leading to the castle and starting from the fact that we were going to build a silo car park facing a heritage architectural site. To make the most of this special situation, we proposed a distinctive feature in addition to the program: a belvedere and its staircase treated as a sculpture. Its final design was entrusted to artist Krijn de Koning.

The car-park facility takes the form of a triangle with rounded corners, creating sleek and vanishing lines that make the building smaller than it actually is. The building does not appear head-on from the rue de Boigne. Rather, its slanting planes lend all their strength to the belvedere box, positioned vertically and cantilevered 5 m above the void. The view of the mountain, in the background of the perspective, remains intact.

The interior of the parking facility is designed to be a pleasant drive, gradually climbing from street level via gently sloping ramps that act as parking decks and wrapping around a central planted patio with a cylindrical ramp leading back down the other side. Upward and downward flows do not intersect: one slowly accesses the top of the building through the gentle slopes before returning to earth directly through the spiral."



© Cyrille Weiner



## Bias

I.H.: "The idea was to give this building a translucent and light volume, inserting it gently into the urban fabric. The curves at the ends of the triangle respond to those of the rounded corners of the buildings around the square. The facades have a 50% void so that the parking lot can be considered as an exterior from the point of view of fire regulations. They are clad with vertical glass strips set at 45° (60% recycled glass, enameled for an opalescent finish). The gaps created offer different views of the city.

The exterior of the building consists of a U-shaped metal profile that wraps around the building from street level to the top floor. Between these metallic U-shaped sections, the glass strips mask the interior in a show-and-tell pattern that can be seen from both inside and outside the garage. During the day, the functionality of the building is on full display while, at night, it is more subdued with the electric lighting etched in the urban landscape like a kind of lantern lending a very different perception.

Shade structures equipped with photovoltaic cells shelter the cars on the roof of the parking garage.



© Cyrille Weiner

## Vegetalize part

I.H :- “The interior of the triangular patio is a garden of shadows, planted with undergrowth vegetation – ferns, periwinkles, maples, hydrangeas and more. The exterior of the parking garage also has a garden, on a terrace facing south, with select Mediterranean-type vegetation with umbrella pines, fig trees, lavender, and grasses.”

## The Skybar

IH: “When we discovered the site, we thought we had to offer something more to both residents and visitors, so we added a second proposal to the parking function. The belvedere lends a public and urban dimension to the building that allowed us to venture beyond the merely functional and arouse a different type of relationship with the city. The belvedere can be accessed from the second floor via the exterior staircase, without going through the parking garage. From up above, the view of the city is panoramic, with the castle of the Dukes of Savoy at the end of the rue de Boigne nestled within the majestic panorama of the mountains and hills surrounding Chambéry. When you go down the staircase of the belvedere you are on the axis of the street, that is framed at mid-height to highlight this perspective of the historic city.

The belvedere-sculpture is appended to the parking building, its tones imbued with the colors of the facades of the houses of the old city. It is this very duality that breathes life into the architecture of the ensemble. A type of architectural writing that gently weaves the soft and translucent curved lines of the silo car park into this colored, orthogonal belvedere element.

The interlacing of the two distinct and complementary writings makes the building simply unique. It was thus on the advice of Georges Verney-Carron that we agreed to pursue this idea by associating with Krijn de Koning.



© Cyrille Weiner



### About Krijn de Koning

Born in the Netherlands in 1963, trained at the Rietveld Academy before passing through the Ateliers, then the Institut des Hautes Études en Art Plastique in Paris in the early 1990s, he held his first exhibitions at that time. Since then, Krijn de Koning has been developing a reflection that takes the form of in-situ work most of the time. The locations of his ephemeral or permanent interventions range from museum or institutional spaces to public spaces; from heritage sites (castles, churches) to industrial sites, from art galleries to private spaces.

Between architecture and sculpture, his works provide an impetus for a reinterpretation of the place for which they are conceived. The spectator is enticed to go through and experiment the structures he conceives, most of which integrate walls, floors, openings (windows and doors), stairs and what have you. The color of these structures acts as a reading tool for lending greater simplicity or complexity to the space.

The use of color also converts the structure into an object vacillating between the architectural and the sculptural, depending on the scale of the project and its place in a given space.

Krijn de Koning lives and works in Amsterdam.



© Cyrille Weiner

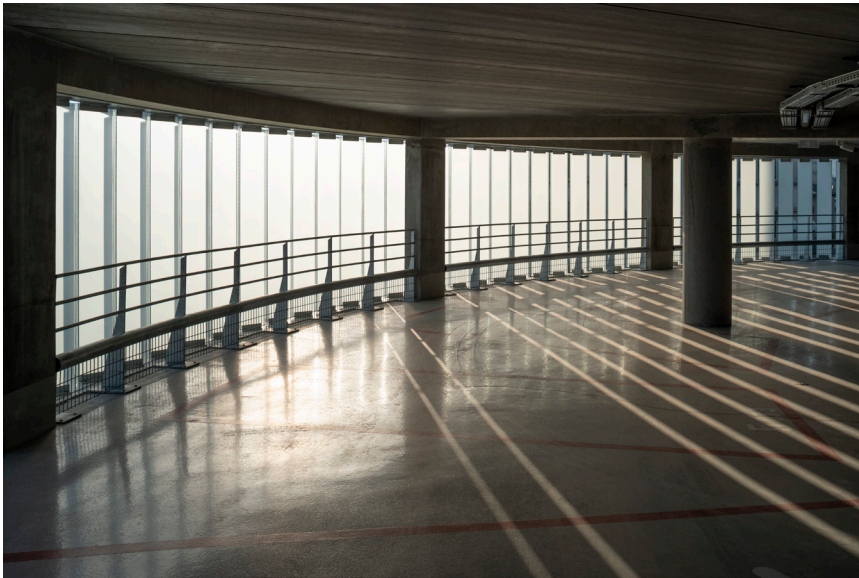


© Cyrille Weiner



© Cyrille Weiner





© Cyrille Weiner



© Cyrille Weiner





© Cyrille Weiner

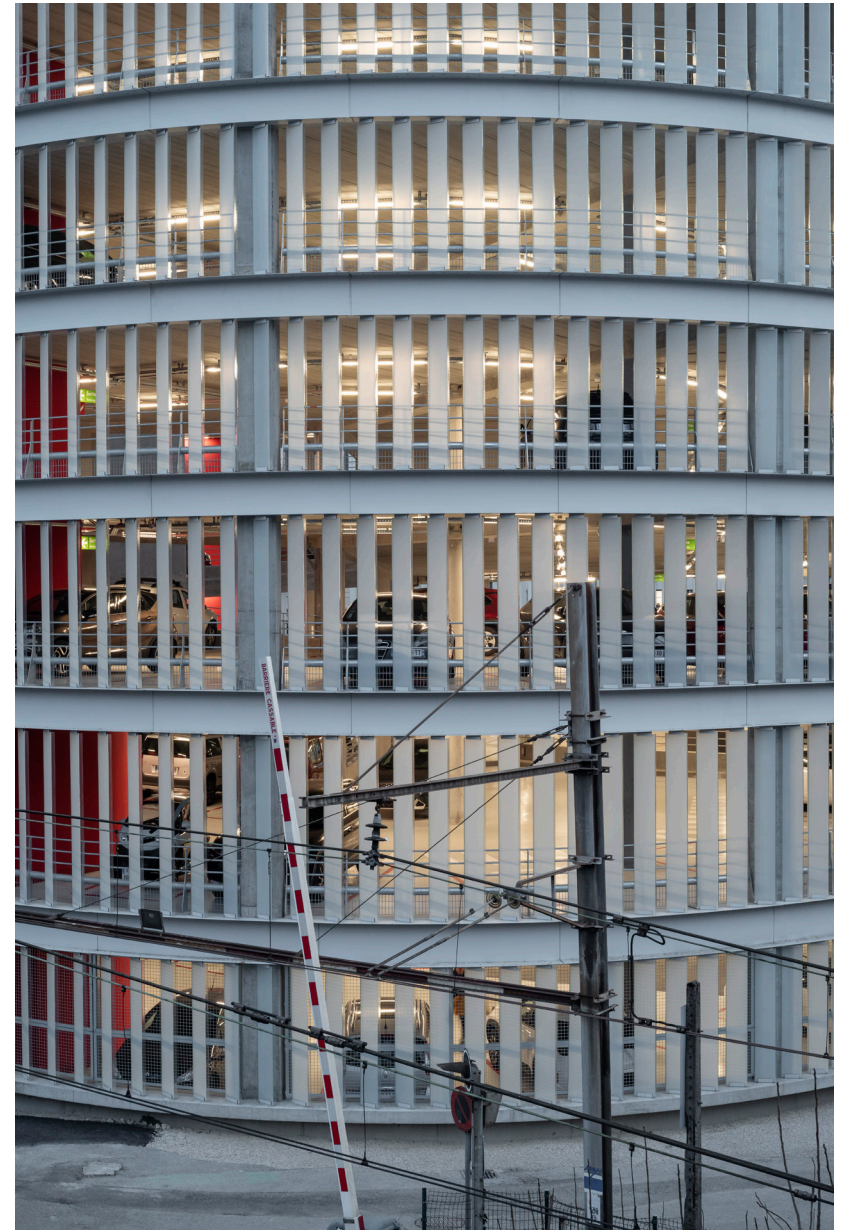


© Cyrille Weiner





© Cyrille Weiner



© Cyrille Weiner

# Technical sheet

## Site

Quai Chambéry (73)

## Project owner

QPark

## Project management

- Hérault Arnod Architectures, Lead Architect
- Thomas Féraud, Jérôme Moenne-Loccoz and Florent Bellet, Project Managers
- Krijn de Koning, Artist
- Art Entreprise, Georges Verney-Carron, Artistic Development
- Arcadis, Structural Design, Fluid Engineering and Roadworks & Utilities

## Type of mission

Comprehensive project management and partial execution

## Floor area

14,500 m<sup>2</sup>

## Cost of the works

€10 M excl. VAT

## Program

Silo car park with 499 spaces  
Belvedere / Skybar

## Schedule

Competition November 2016  
Delivery 2021

## General contractor: Chanut

## Main subcontractors:

Blanchet: locksmithing and carpentry.  
Miroiterie de chartreuse: glazed facades,  
Noir étanche & Etandex: waterproofing  
Gillet, HVAC Rhoniselec, electricity  
Garden, planting



© Cyrille Weiner

2

## Plans



**Hérault Arnod Architectures**

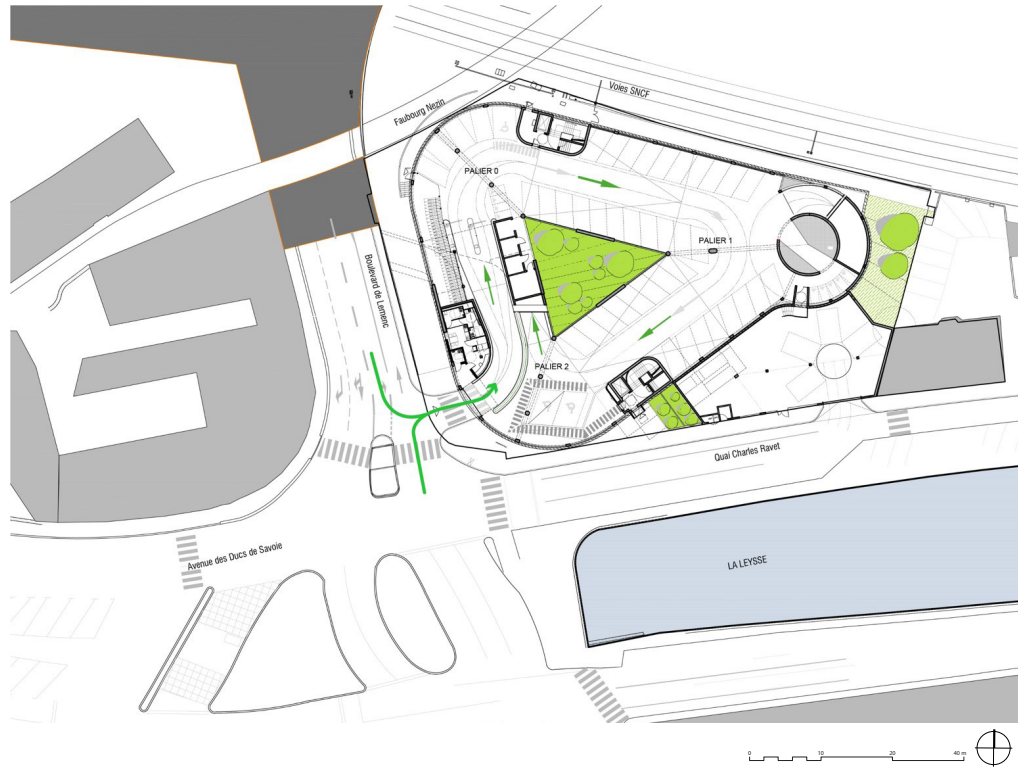
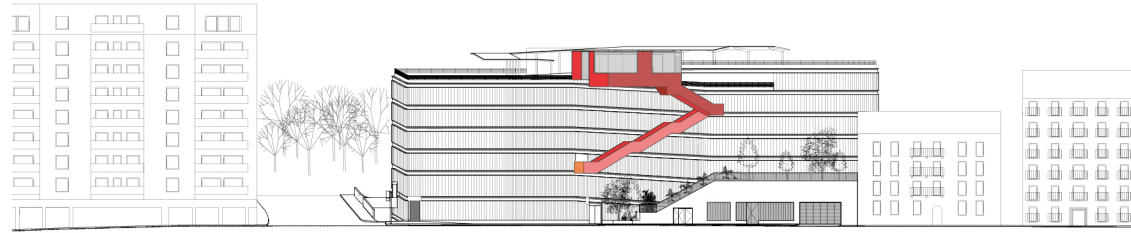
Press kit

Qpark Ravet

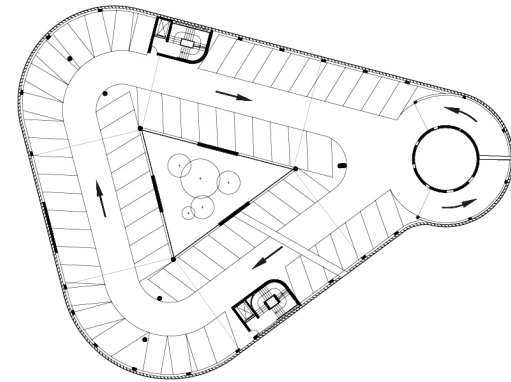
Chambéry - France



South facade



Master plan



Floor plan



3

## Photo library



**Héault Arnod Architectures**

Press kit

Qpark Ravet

Chambéry - France

Competition images



Concours 01



Concours 02

Photos ©Cyrille Weiner



01



02



03



04



05



06



07



08



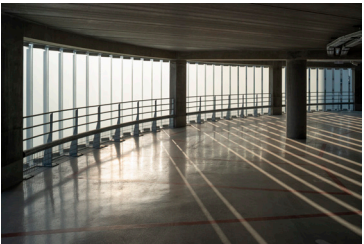
09



10



11



12



13



14



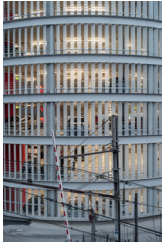
15



16



17



18



19



20



21



22



23



24



25

## Notes

## Notes



**Hérault Arnod Architectures**

+33(0)148078140  
ha-paris@herault-arnod.fr  
1 rue Meissonnier  
93500 Pantin

[www.herault-arnod.fr](http://www.herault-arnod.fr)