

Reflection House

“Visualizing a boy playing with his friends in the neighborhood. They run into this house, walk in and out of those houses. Picturing adults leaning against the fence chatting and watching their children run and play.” These fond memories **"reflect"** the homeowner's childhood living experience and the relationship with his mother. After decades of being apart, growing up, living, studying, and working abroad alone, the owner wants to come back to a home that facilitates his elder mother and himself, different ages living together in harmony. **A home that suits two people and coexists for their ages and needs.**



The house is built on the original ground of the existing house. While the location is closely surrounded by adjacent houses, the design intentionally reflects the memories they both had created over the years within the neighborhood with the connection in and out. The designer decided to separate the entrance layout because of different activities and lifestyles of the owners and lay the house in the middle to create an

open space. There is a garden on both sides to receive natural light and wind.

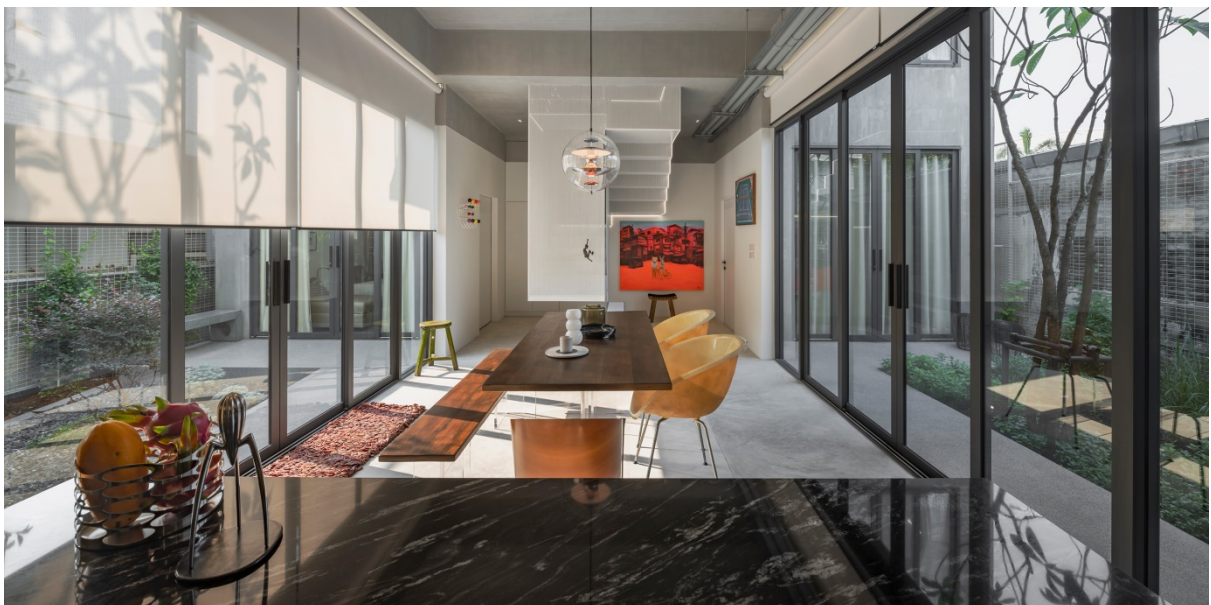
The space is curated by separating 2 living into 2 levels. The ground floor is mainly created for the mother's own living compound, including a common area, such as kitchen and dining room. The upstairs is planned as a private space for sons.



The overall design with selected materials and colors of the house makes the house simple. The designer chose the bare concrete surface of the building without painting and offered a dark gray for the door frames. To complete the form of the house, the designer shaped the roof of the carport and the fence at front corresponding to the house's roof and the neighbors. This continuation harmonizes and does not alienate surroundings. In addition, the chosen steel laths for a fence help make the area airy and stark contrast from the solid body of the house.



When open the dining room doors on both sides adjacent to small gardens, this allows the natural light and wind to flow with a gentle breeze, creating an ideal atmosphere for relaxing, resting, and socializing.



The perforated steel sheet staircase is located in the center of the house as a sculpture.



Since the stair is semi-transparent, it does not feel close-in or make the users uncomfortable to walk into. The steel sheets are well curated and geometrically folded to make thin steel sheets even stronger. So, the

stair becomes a self-structured platform without any additional support.



When approaching to the 2nd floor, it will be the owner's compound. A young man who loves entertaining with his childhood friends. Therefore, the private space must be able to facilitate socializing (serving food and beverages) and watching football on holidays without interfering with the mother's area. Adjacent to the bar is a living room with a small balcony to accommodate a larger space for entertaining. The designer located a full bathroom with shower for guests and friends to be hidden behind a bar. This will help the area become more privacy when the guest stays over.





The designer planned the bedroom location on the opposite side of the office room, which offers different outside views but connected through the dressing room and bathroom. Above the dressing room and bathroom is a relaxation area or for yoga or meditation.



The interior style focuses on few pieces of furniture. Not only is this for the flexibility of the use, but also it helps to control the construction budget. The designer ensures the continuity of the architecture and interiors by exposing surfaces, walls, and ceilings, with bare mortar and painted the walls white only for the height range used by the homeowner. This creates your eyes to feel comfortable. To add an interesting dimension, the owners can hang decorations of everyday life, using homeowner's collection: paintings, chairs, lamps, hooks, clocks, and other works of art, etc. These items can be adjusted and moved, increasing, and decreasing at any time.