



Exposition *Territoires et paysages*, l'atelier Pierre Thibault at La Galerie d'architecture de Paris

April 14 - May 27, 2023

The Atelier Pierre Thibault places the Quebec territory, its landscapes, its seasons and its architecture in constant dialogue. vernacular in order to create projects intimately rooted in the natural and cultural environment.

Scenario in an archipelago composed of several islands-territories, the exhibition uses the distinctive corpus of Pierre Thibault and his team to question the different relationships between an architectural project, its site of implantation, its cultural context and natural. The result is an architectural constellation, an intricate and poetic universe of places, images and typologies that materializes within the framework of the exhibition, distilling the essence of his sensitive, empirical and intuitive architectural approach.



The architecture of l'atelier Pierre Thibault in symbiosis with large spaces.



Perfect reflections on the calm water of Lac Héron in the Laurentians, the intense sounds of the Val-Jalbert waterfalls, the silence in the wooden enclosure of the Val Notre Dame abbey to the sweet songs of the birds at the Grantham foundation.



All the senses are solicited to experience the spaces of Pierre Thibault. Each project is an opportunity to create a particular story that brings together the landscapes and the humans who inhabit them.

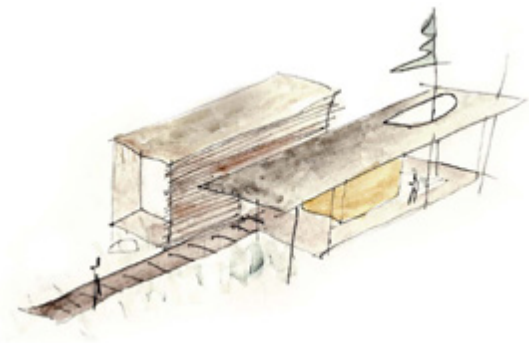


The unique transforming power of the seasons inspires the architect to create places that capture with acuity these unique rituals to experience the intense light of winter on the snow, the exuberance of the colors of the Indian summer, the softness of the summer or the spring explosion of nature.

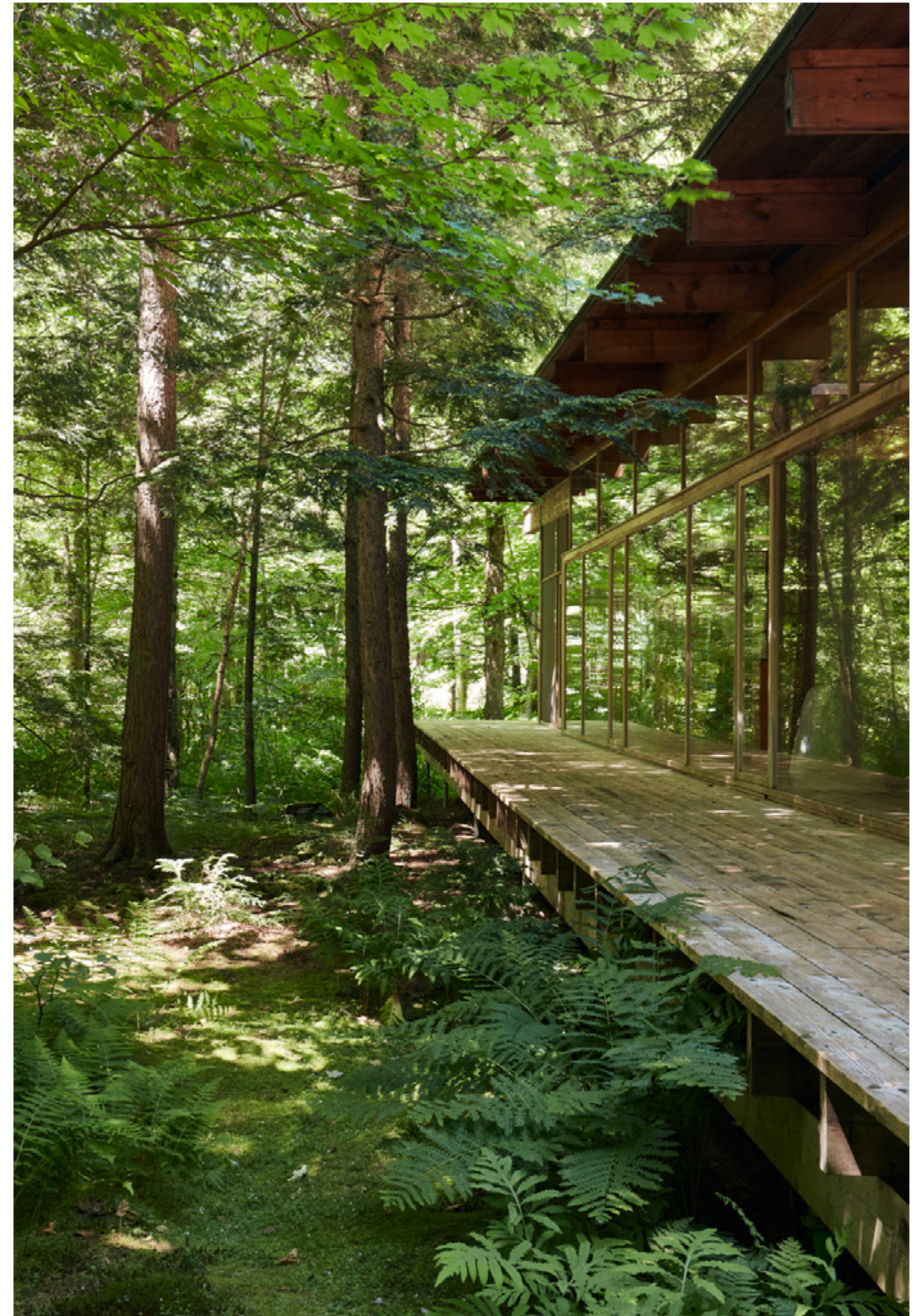


In a country that has always been confronted with huge climatic differences, the temperatures being able to oscillate between -30 degrees and +30 degrees, all the living have developed unique strategies to live there in the best conditions.



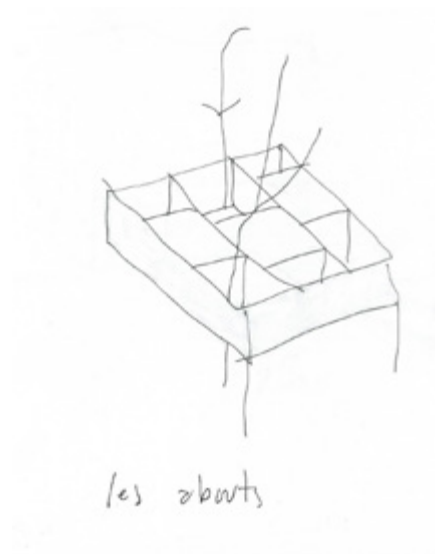


A woodland setting in the heart of the forest, this house is a place of communion where art and nature become one. Imagined for contemporary art collectors who dreamed of a spacious and warm home to display their works and accommodate their daily lives, the plan unfolds in two distinct parts separated by a central circulation. The first section, a single-storey building stretching over thirty meters, dialogues with the horizontal line of the river that circles the site. It seems to levitate above the ferns and mosses of the site, carefully maintained by the residents. In contrast, the second part rises on two floors, offering interior spaces that recall those of an art gallery. Everywhere, the openings frame views of the tree trunks, like landscape paintings that naturally dialog with the collected artworks.

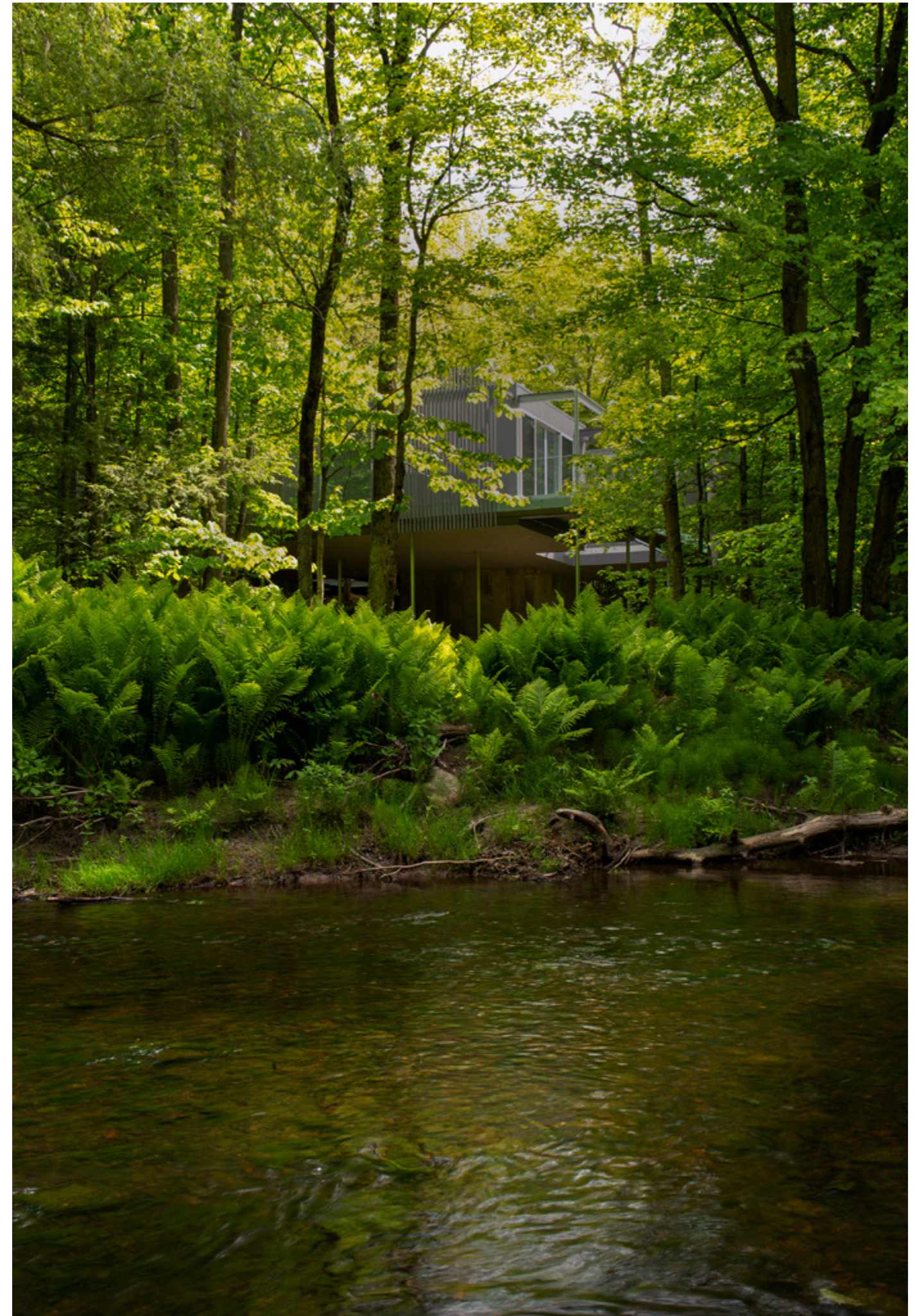








Fondation Grantham would never have come into existence had it not been for the construction of Les Abouts fifteen years earlier: Over time, its residents developed a unique relationship with the forest, carefully nurturing the mosses, ferns and flowers of the land as precious and delicate works of art. This is how the idea of a space dedicated to art and the environment came to be. Once again calling upon Atelier Pierre Thibault, a space that would simultaneously embody a museum reserve, an artist's residence and an exhibition hall was sketched out and built near their house. Designed as a volume perched in the forest, the entire foundation floats several meters above the ground, creating an outdoor room on the ground that pushes the boundaries of traditional definitions of architecture, allowing to be simultaneously indoor and outdoor. Fondation Grantham and Les Abouts now form an indissociable dyptic that magnifies the environment with complementary compositional qualities.









The hydroelectric plant is located in a deserted industrial village turned into a touristic destination. Its strategic site, at the foot of the Ouatouchouan falls, demanded to reconcile the industrial nature of the project with the imperative to protect a precious heritage. The plant was therefore developed to highlight the touristic pathway, using its capacity to showcase the falls that gave the village its first reason of being. Covered by a larch lathing filtering light and intercepting frost, the concrete building appears partially buried. Its technical language, brutal yet delicate, evokes the sobriety of industrial structures. Perched above the empty air, cantilever balconies punctuate the walkaway and expose the visitors to views of the fall, the river and the historical mill.







La résidence du Lac-Brome



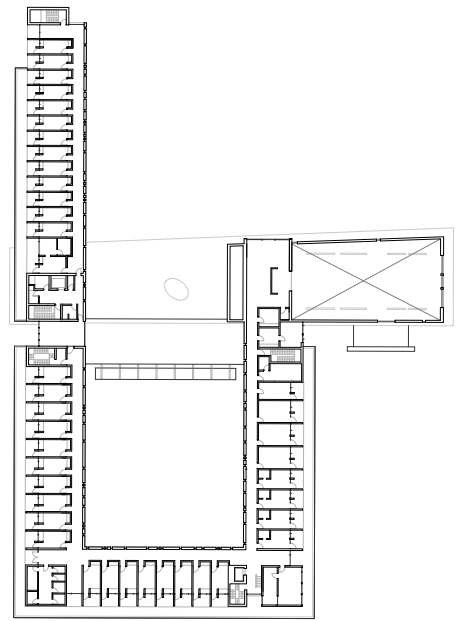
Like in a museum, the Lac-Brôme house reveals, highlights, frames, accentuates, gathers or isolates elements of the exterior context with accuracy and sensitivity, creating a constant dialogue between the architecture and the landscape. Composed of wood and stone, it relies on the durability and nobility of natural materials and their combination to blend into its environment, which is characterized by the proximity of a huge lake, in a refined and elegant manner. At certain key moments, dazzling visual breakthroughs cross the house, offering unique gazing points toward it. Conversely, in the master suite, an interior garden surrounds a tree, decontextualizing it as an art object. From these simple basic principles, an infinite number of configurations and spatial qualities can be achieved. The search for the right gesture, for balance, is a constant concern.







L'abbaye Val-Notre-Dame



In the heart of a forest in St-Jean-de-Matha, a monastic community breathes in harmony with the trees that surround it. Seven services a day mark the daily life of these men who dreamed of an architecture that would reflect the inner peace and simplicity they cultivate continually. Atelier Pierre Thibault thus imagined for them a new abbey that gradually winds around the cloister and culminates by the church. At its heart, a piece of forest brings the spaces to life as the days and seasons go by. The project was completed nearly twenty years ago, and has since lived in symbiosis with the territory that hosts it, both imbued with a quiet and peaceful strength.

