



External facade in daylight



Steel portals embedded with veneer clad boxes seamlessly merging with open large window shutters



Vertical portal members voluminizes and realms the space with a backdrop of horizontal railing and shelves for books



The tour de force is the cleverly crafted hidden switchplate beneath the veneer clad boxes



Centre axial shutters for the arched windows

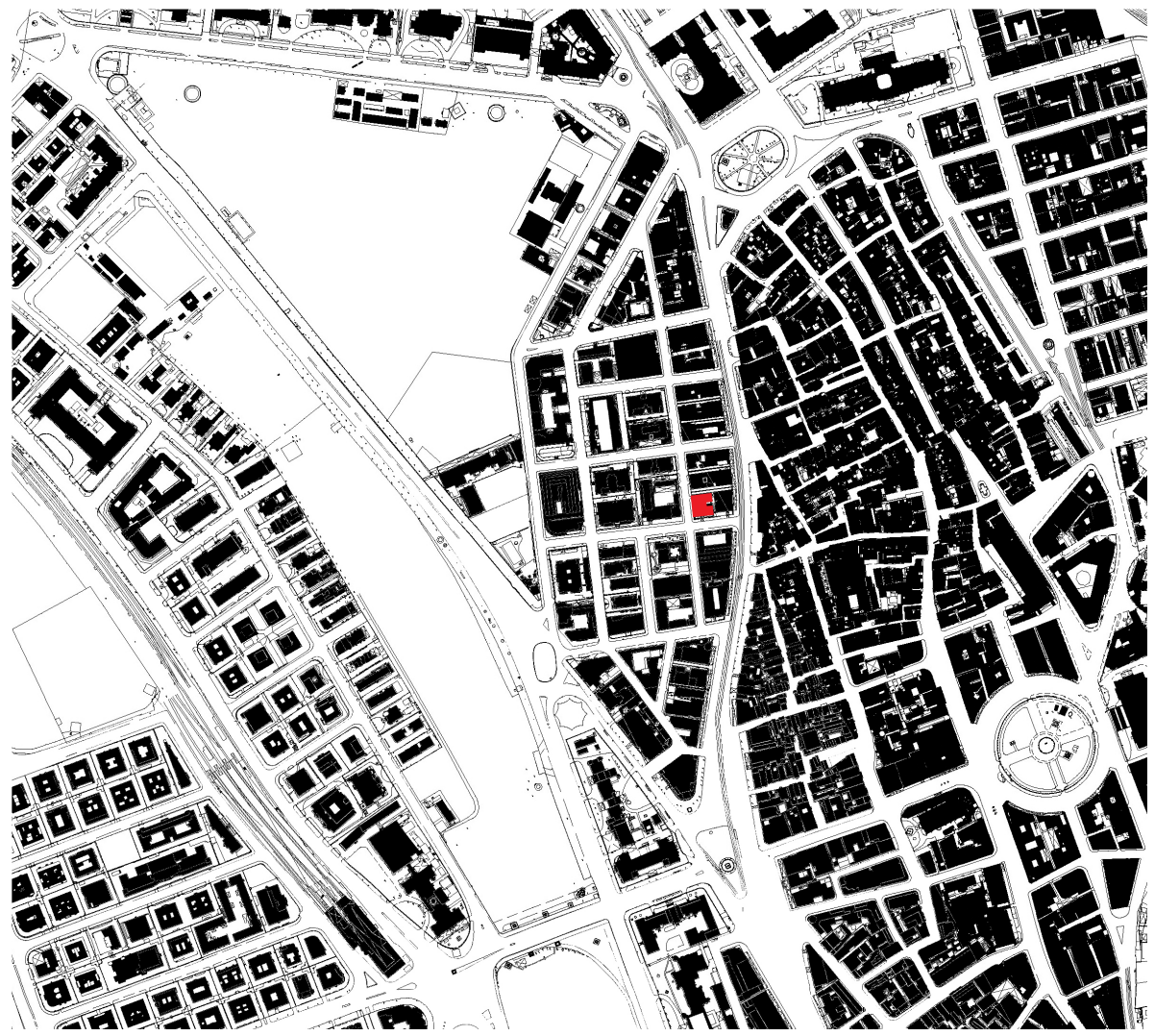
TARQ Gallery

The project for a contemporary art gallery, **TARQ**, is located between two significant and historical urban fabrics of Mumbai. The site is on the ground floor of a **120 years old building** sitting at the eastern edge of the Victorian Gothic style urban fabric and in the west across the maidan, art deco architecture built between the 1930s to 40s reflects the modern movement and development of Mumbai. **The restoration and transformation of this historic structure into a contemporary art gallery space** required careful consideration of its historical significance and integration with modern elements.

During the design process, the foremost objective was to pay attention to the building's rich history while infusing it with a fresh and contemporary aesthetic that characterises the contemporary art gallery. The initial consideration was introducing **abundant natural light, achieved by restoring the original openings** within the thick brick masonry structure. **The underlying steel columns and beams, supporting the lofty 14-foot-high ceilings of the gallery, emphasise the verticality of the space.** This was accomplished by highlighting the columns with wood filler, creating a visually striking manifestation of the building's structural elements.

The project demanded a significant degree of **custom carpentry and fabrication, with meticulous attention to site-specific details.** These details were exclusively for the project, ensuring a cohesive design language and, simultaneously, away from mass-produced products. This focus on custom details has been **an integral aspect of the design practice from its inception**, facilitating the seamless integration of bespoke details that **align precisely with the spatial organisation of each project.**

A feature that emerged during the design process was incorporating a **Corten steel wall**. This addition served a **dual purpose, paying tribute to the building's historical heritage while incorporating the brand identity of TARQ.** The desire to infuse the windowless conference room with TARQ's signature crimson red led to exploring various options. The choice of Corten steel was driven by its ability to coexist with the original steel structure, imbuing the space with bold materiality and a textured aesthetic.



The site for the project is located at the intersection of two distinct urban fabrics of Mumbai. In the east of the maidan, Victorian Gothic architecture constitutes a tight urban fabric. Towards the west, across the maidan, art deco architecture demonstrates the process of modernisation through the 1930s and 40s.



The two arched window of the gallery



Walkthrough to the library encompassing matt white mild steel shelf and partly removable T-railings to uplift the artwork into storages



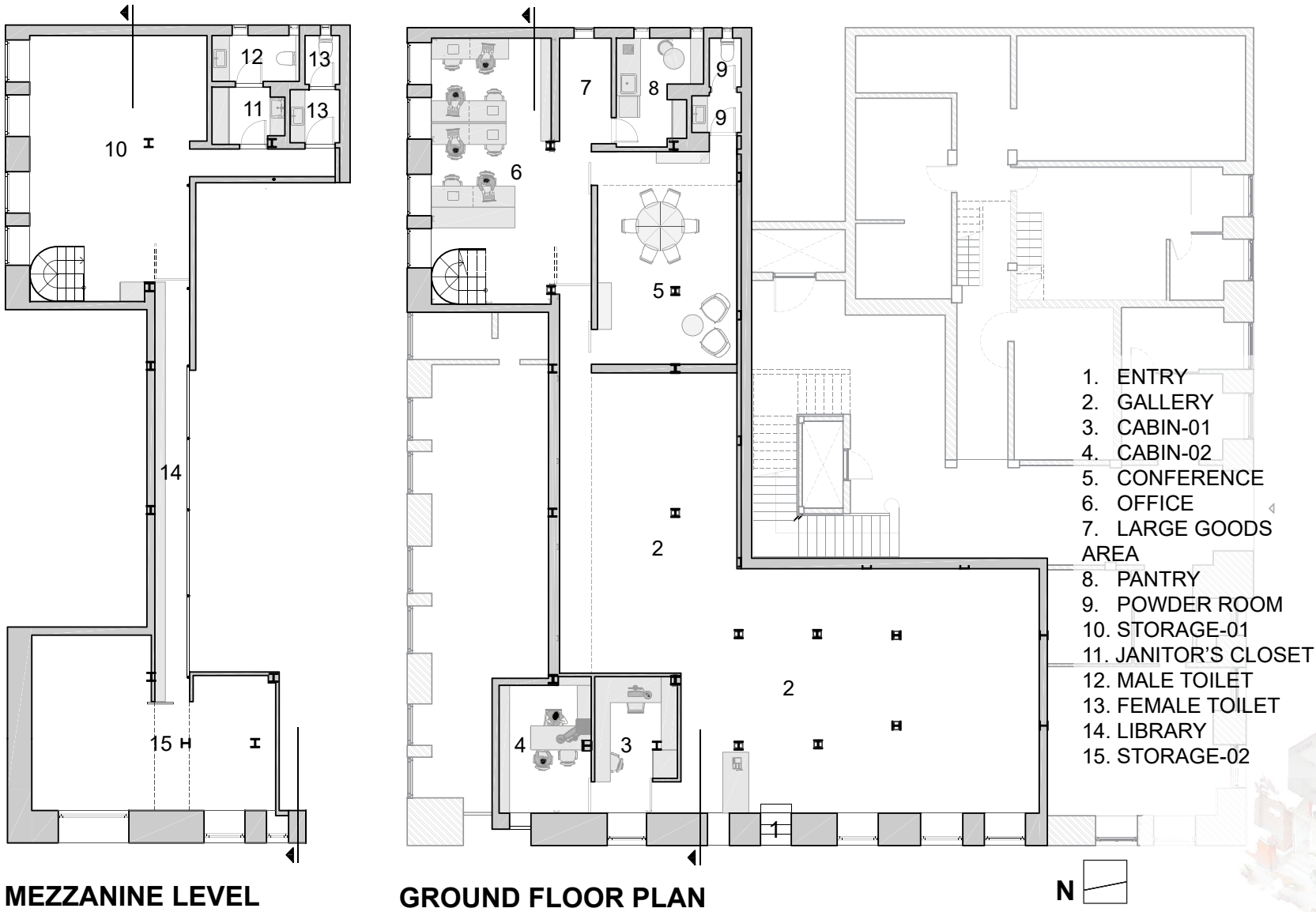
Conference room overlooking 100x100mm diagonally placed corten steel wall with bespoke basalt stone flooring



Mild steel staircase in matt black connecting to the mezzanine level



The office space is illuminated by the North light through the restored windows. Office furniture in parallel horizon with the beams



MEZZANINE LEVEL

GROUND FLOOR PLAN



Preserving the values of the heritage building was a concern during the restoration process. The efforts in this regard included **restoring the original wooden windows** on the north part of the facade and employing skilled carpenters. On the west facade, as there was no evidence of original window frames, the existing openings were retained, and the installation of **new window frames and shutters with central axial hinges** took place. This careful preservation work not only respected the building's architectural legacy but also introduced new elements that **enhanced visibility from inside and outside the gallery space**.

Another design decision motivated by the original building structure was the deliberate choice to **expose the steel beams rather than conceal them behind false ceilings**. These structural elements stand independently of the gallery space, to remain visible, maintaining **the coexistence of different eras and systems**. This design choice served as a testament to the historical significance of the building while offering a visual representation of its integration within the overarching design narrative.

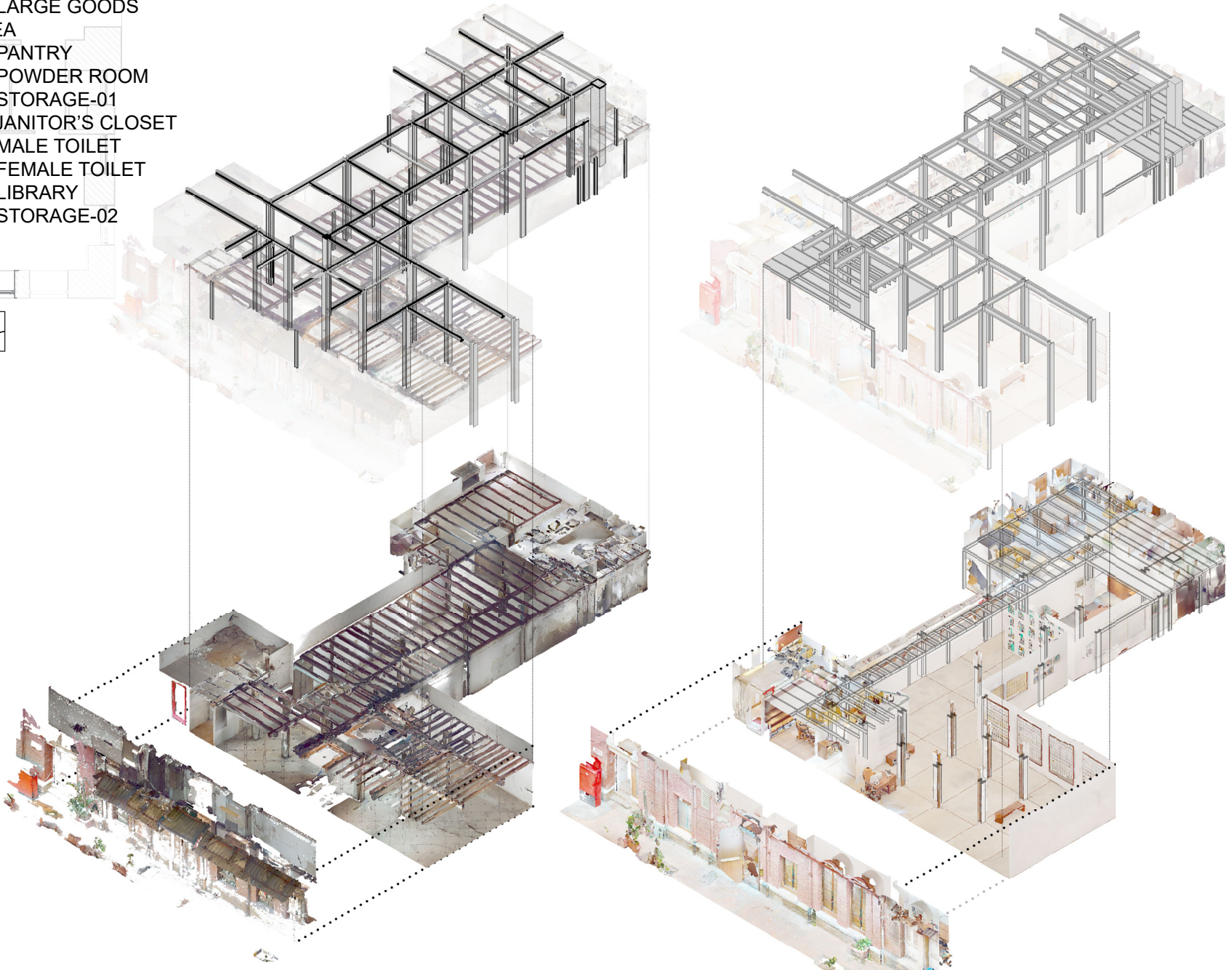
The design approach undertaken for this project exemplified a deep respect and appreciation for the heritage of the old building. By fusing modern elements, **optimising natural light**, and employing **custom carpentry and fabrication**, the space was transformed into a contemporary art gallery that eloquently reconciles **the past with the present**. Incorporating the Corten steel tile wall not only honoured TARQ's brand identity but also celebrated the building's historical legacy. Through meticulous attention to detail and the preservation of intrinsic values, the resulting gallery space is a testament to the harmonious **coexistence of history and modernity**.



Sage green concrete panels transcends from flooring, dado to platform for the Female Toilet



Powder pink concrete panels forms tactile for the male toilet breaking the stereotypes



ANALYSIS OF EXISTING STRUCTURE

MODIFICATION OF MEZZANINE STRUCTURE



A twilight picture of the external facade through the access road



Sectional elevation across gallery, conference, office, storage-01, library and storage-02