



LOCATION

Brisa House



Iporanga Beach



Sea view

Sea view

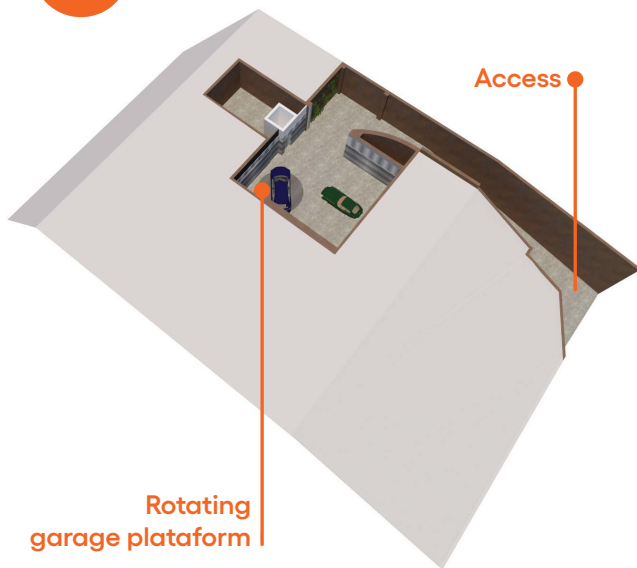


INTERIOR DESIGN

CONCEPT

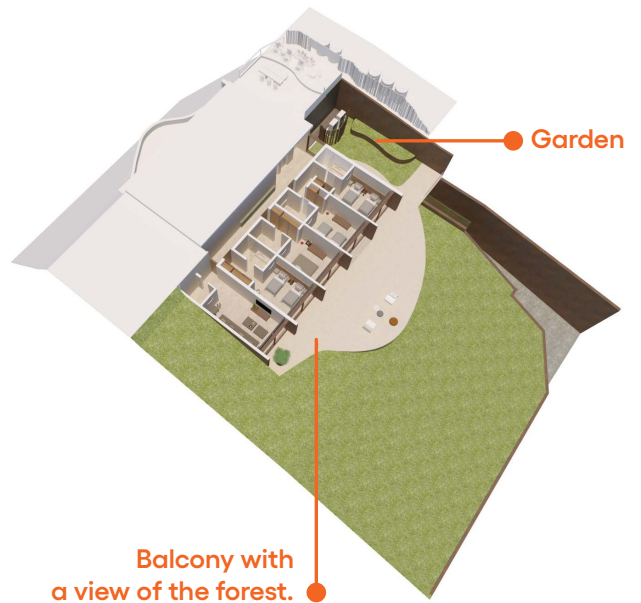
1

Basement floor
Access and garage



2

Ground floor
Bedrooms
and home TV



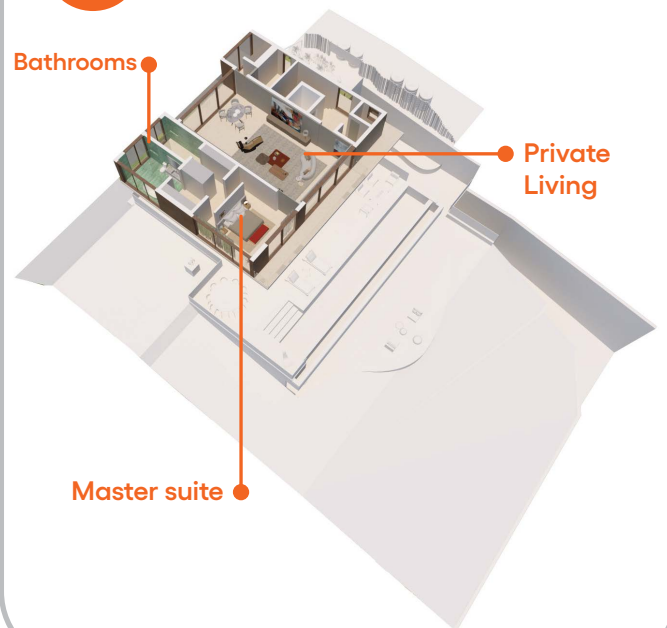
3

First floor
Social areas



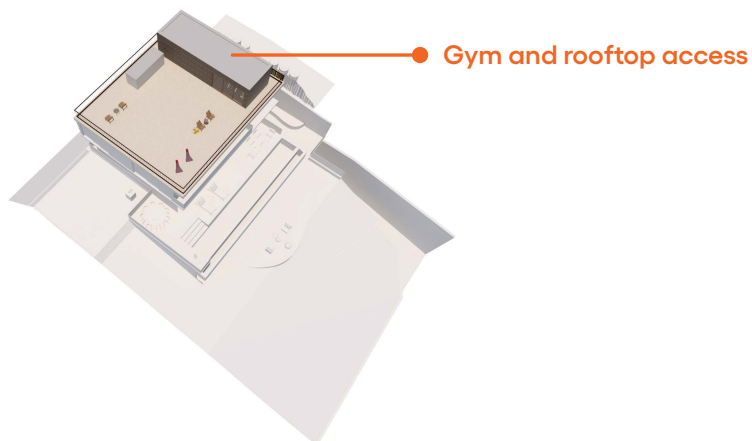
4

Second Floor
Private master area



5

Rooftop
Social area

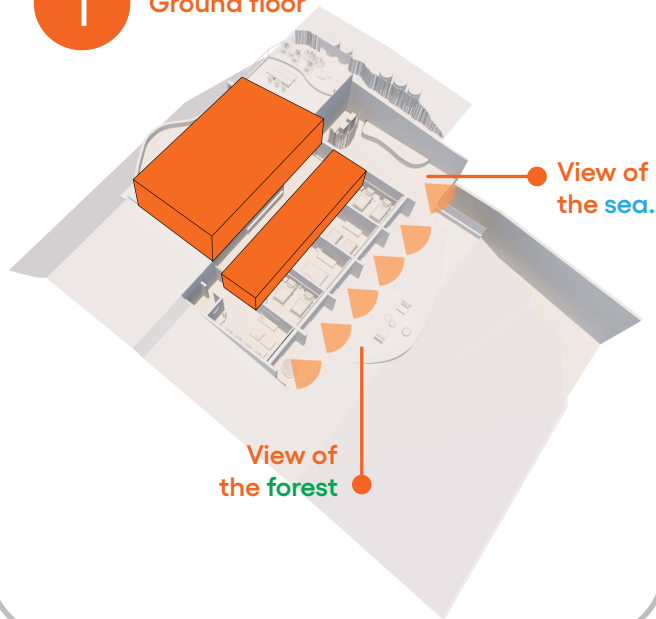


VIEWS

Potential views
of the surroundings at Brisa house

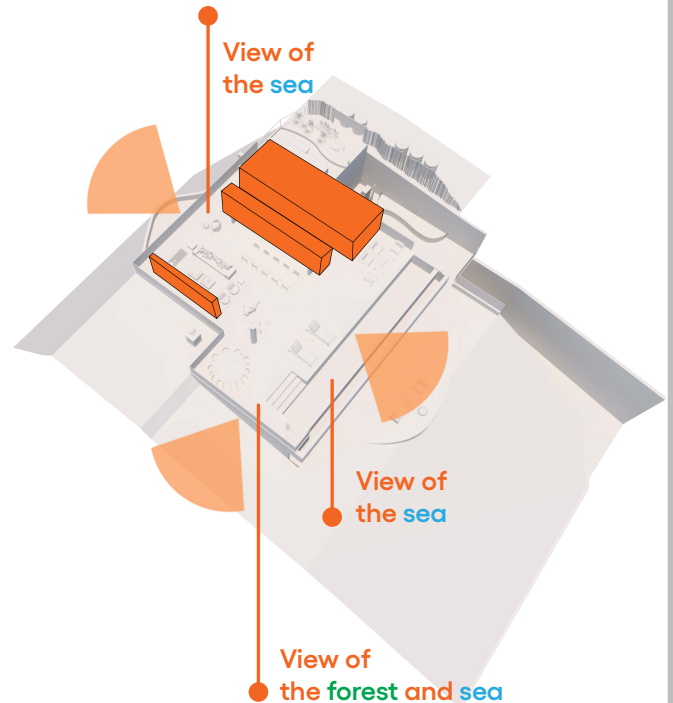
1

Ground floor



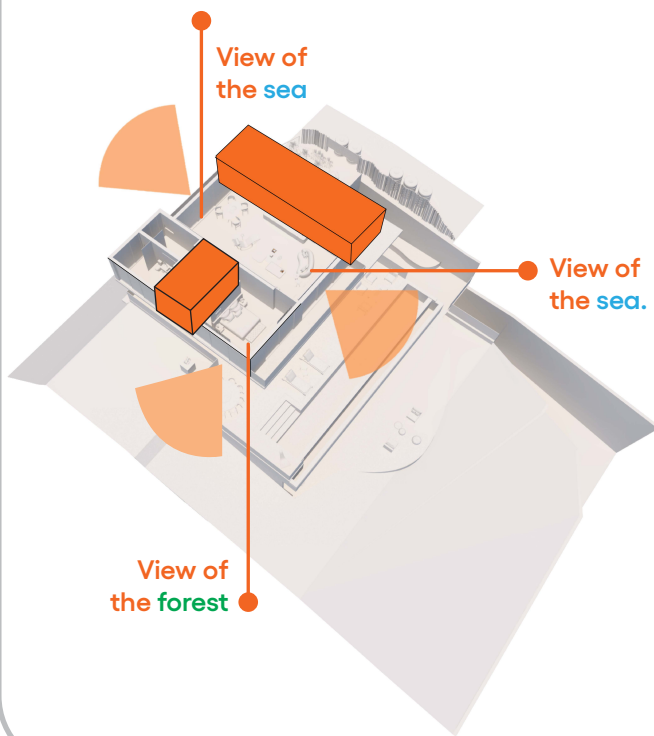
2

First floor



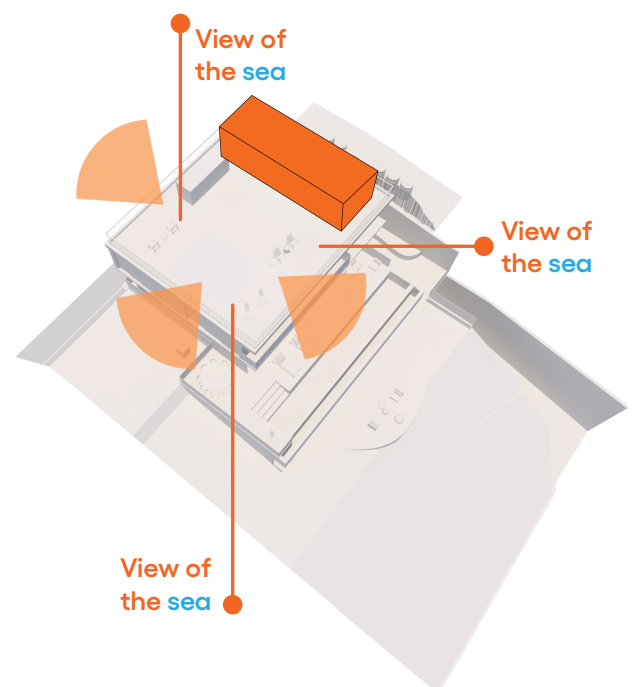
3

Second floor



4

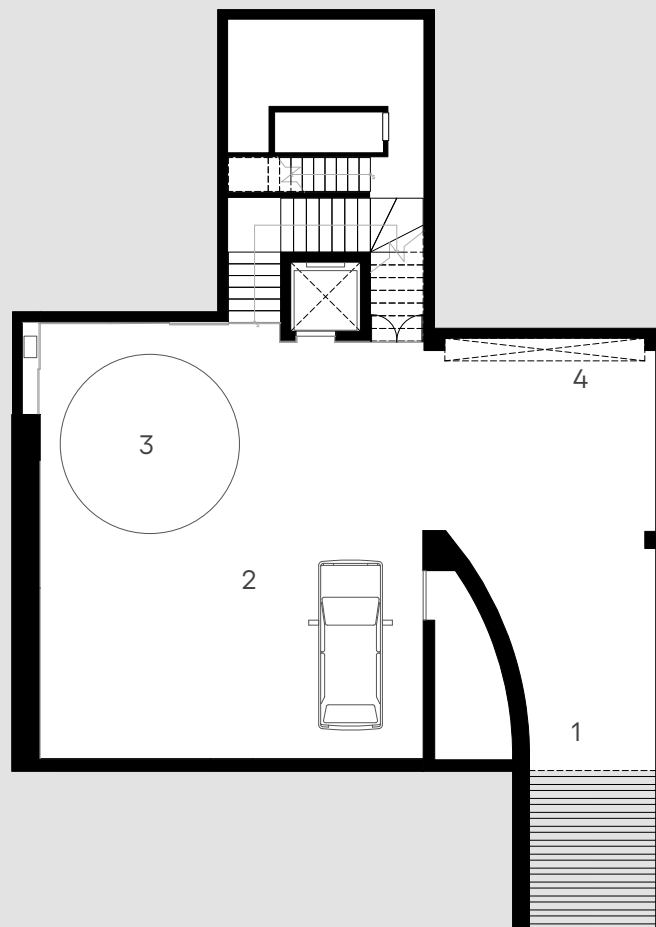
Rooftop



BASEMENT FLOOR

Legend

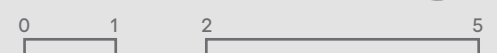
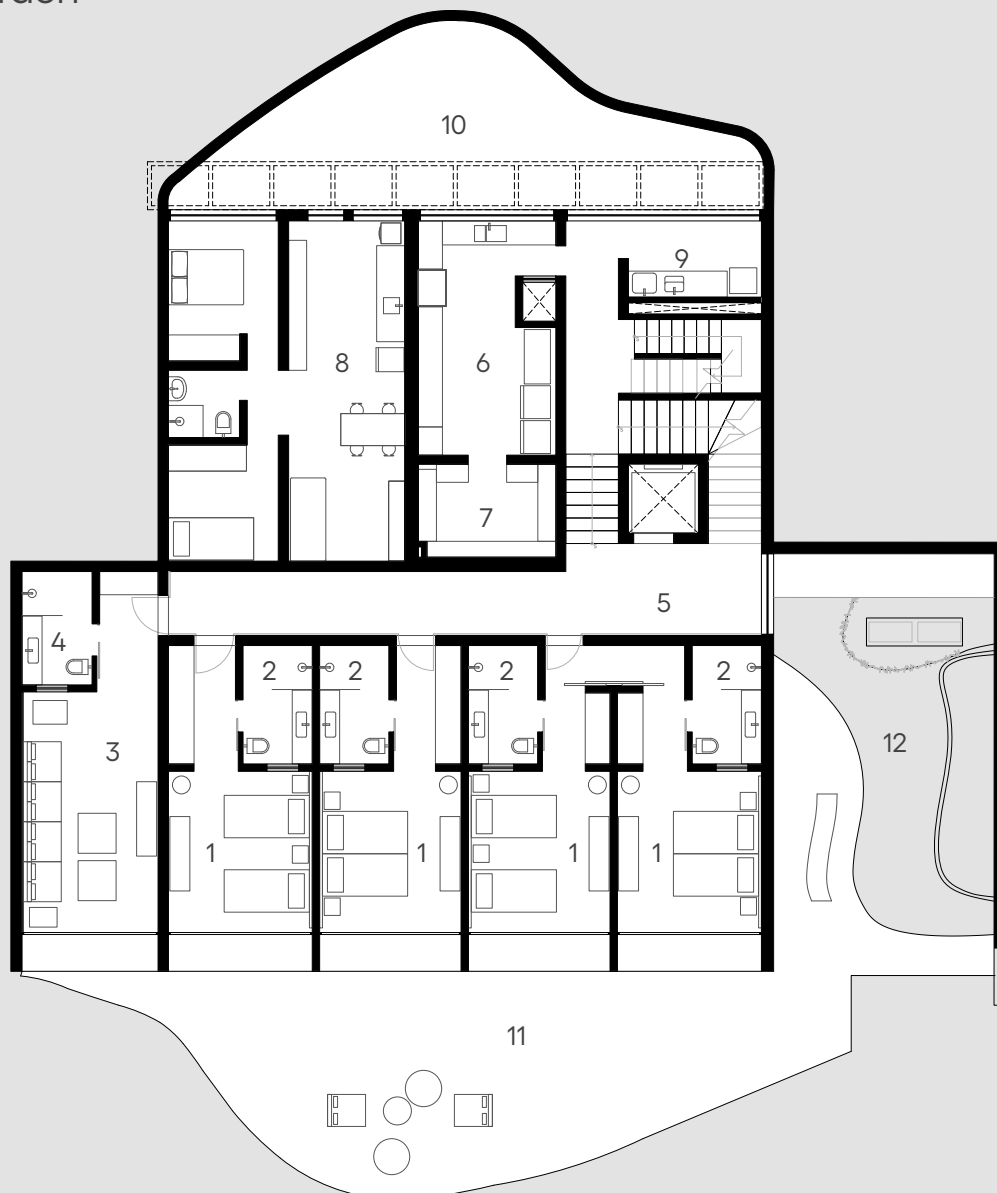
- 1 - Garage access
- 2 - Garage
- 3 - Rotating car platform
- 4 - Vertical garden



GROUND FLOOR

Legend

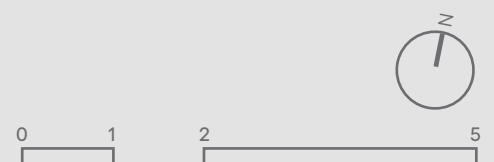
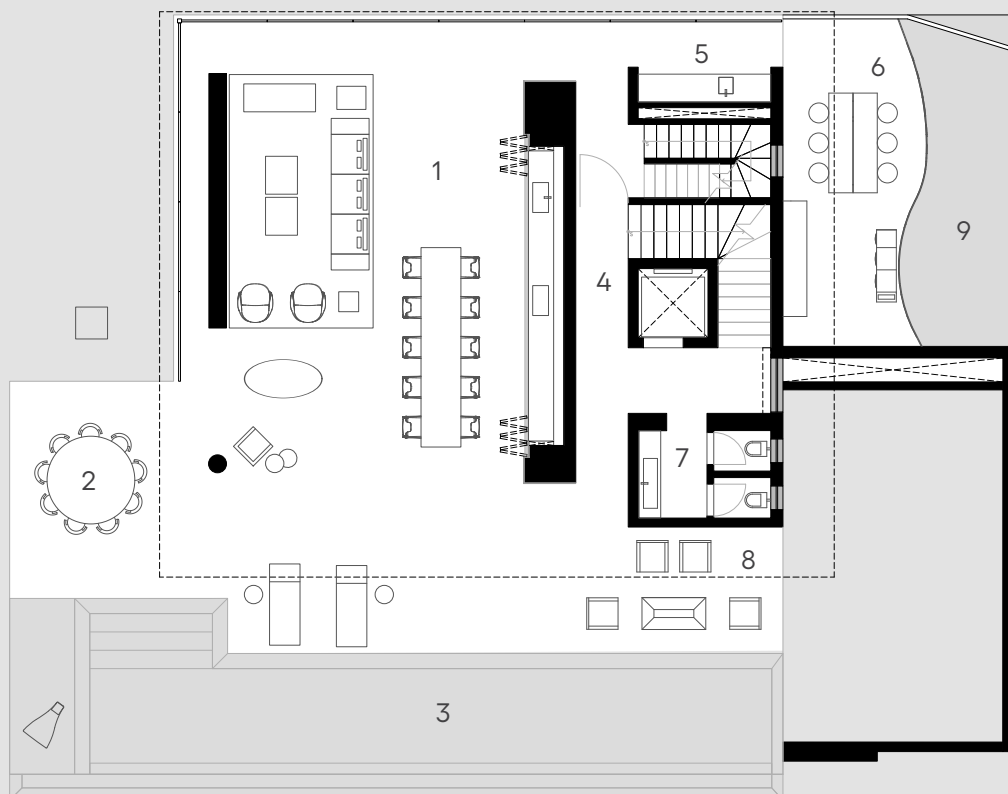
- 1 - Guest rooms
- 2 - Guest bathroom
- 3 - Home TV
- 4 - Bathroom
- 5 - Private circulation
- 6 - Kitchen
- 7 - Pantry
- 8 - Staff apartment
- 9 - Laundry
- 10 - Service balcony
- 11 - Private balcony
- 12 - Garden



FIRST FLOOR

Legend

- 1 - Living
- 2 - Outdoor balcony
- 3 - Swimming pool
- 4 - Social circulation
- 5 - Barbecue area
- 6 - Outdoor table area
- 7 - Guest toilet
- 8 - Firepit
- 9 - Garden



SECOND FLOOR

Legend

- 1 - Master suite
- 2 - Closet master
- 3 - Her master bathroom
- 4 - His master bathroom
- 5 - Private Living
- 6 - Private circulation
- 7 - Private toilet
- 8 - Private Cellar
- 9 - Private balcony

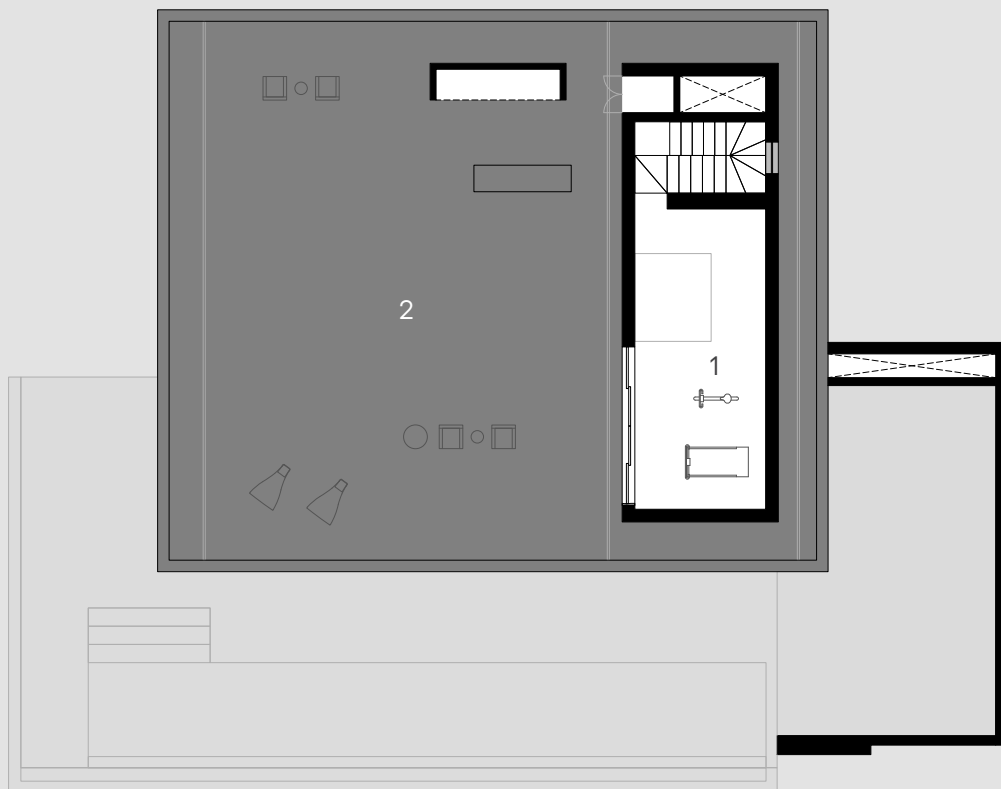


ROOFTOP

Legend

1 - Gym

2 - Terrace | viewpoint



HIGHLIGHTS

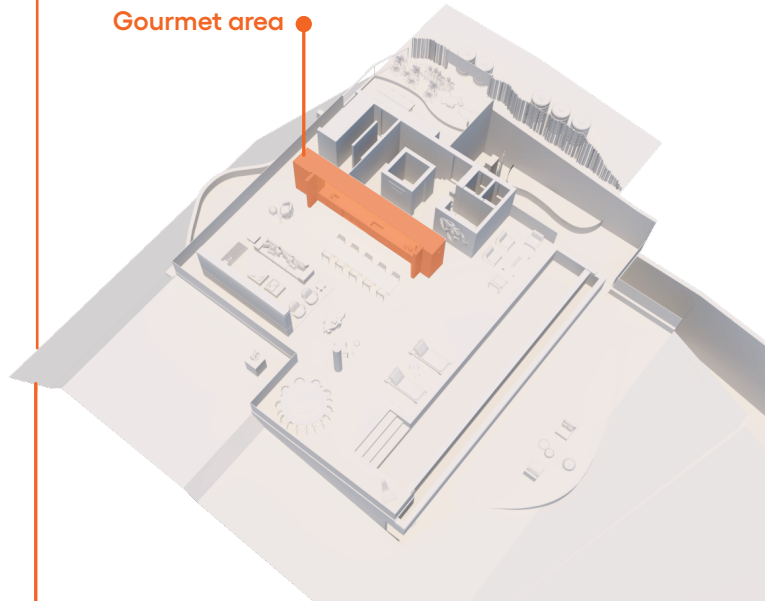
1

An elegant way to illuminate.

The gourmet area combines practicality and elegant design. Featuring a sink, a dry bar for organizing bottles, as well as wine coolers and storage drawers, the space is designed for stylish entertaining. In the background, a fabric screen diffuses soft lighting, creating a cozy and sophisticated atmosphere.

First floor

Gourmet area



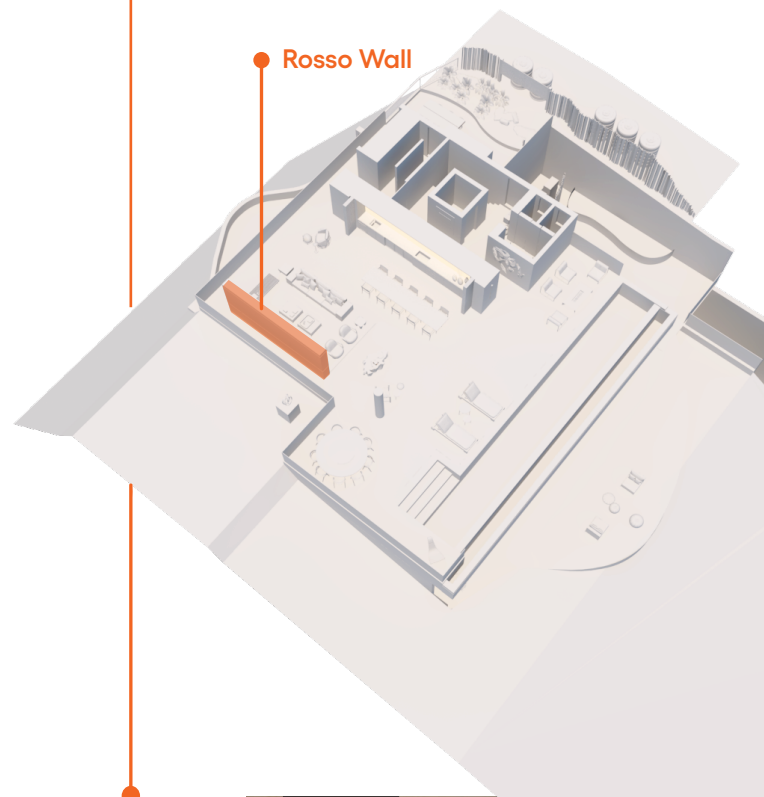
HIGHLIGHTS

2 Rosso Wall

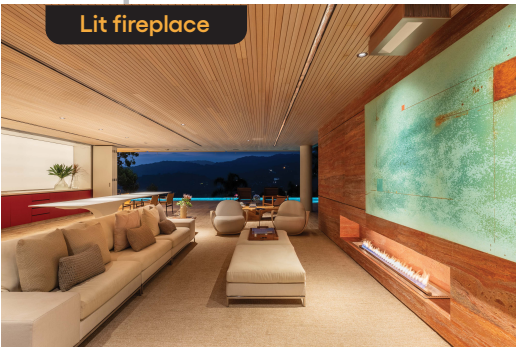
“Conversations,
Moments,
and a Fireplace to Warm Up.”

This living space is the epitome of comfort and sophistication. The Rosso marble wall showcases a piece by the Brazilian artist Bechara, adding an artistic touch to the environment. A sliding panel conceals a TV screen, which is revealed when needed for entertainment moments. The strategically placed fireplace provides a cozy warmth, making the space perfect for conversations and relaxation.

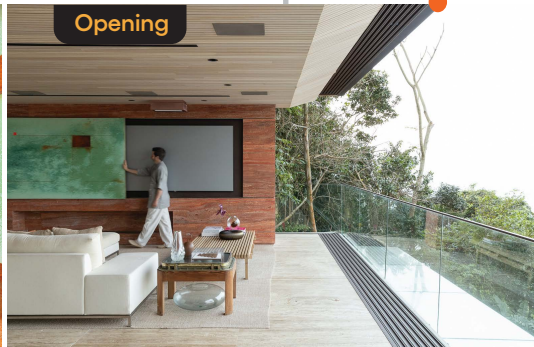
First floor



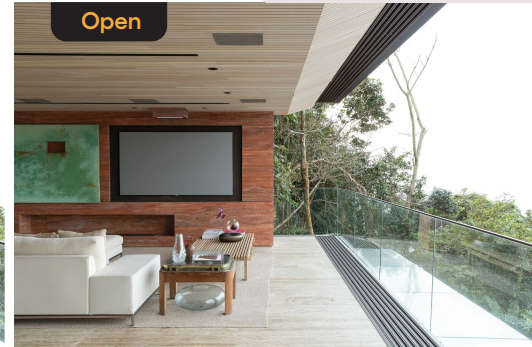
Lit fireplace



Opening



Open



Closed



HIGHLIGHTS

3

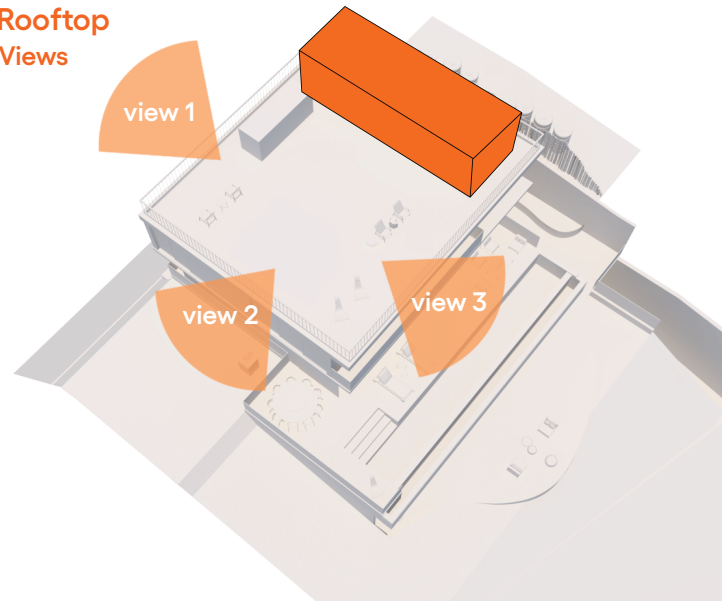
View of the Atlantic

“Over 180° of sea view, with the rest being Tropical Forest.

At Brisa House, the rooftop is designed for observing the sea. For this reason, the seating has been positioned to face the stunning view of the South Atlantic.

One of the standout features of the layout is the side table, as it is a real ship propeller topped with a glass surface.

Rooftop Views



HIGHLIGHTS

3

Awapé

“A sculpture by
Hugo França

The Awapé sculpture, created by renowned artist Hugo França, was carefully placed in the garden, amidst the lush forest that surrounds the area. Its organic shapes blend seamlessly with the vegetation, naturally integrating with the environment.

We designed its base in corten steel, which complements the architecture of the house, enhancing the harmony between art, nature, and structure. Each element was thoughtfully planned to work together, resulting in a setting of pure contemplation and visual balance.



DESIGN PIECES

1

Equilibrio table

The Equilibrio table, designed by us, is inspired by the choreography of a ballerina, the Equilibrium table uses the cantilevered metal structure to support the 5 meters top. Thus, with only one support, the table supports social interactions around it in a light and sculptural way.

2

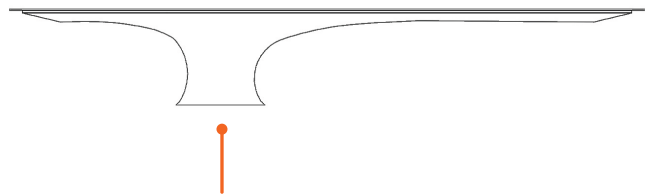
Diagrams



Ballerina



Design of the table leg inspired by the movement of a ballerina's choreography.



The result: the Equilibrium table.

The table has a single leg, ensuring that the surrounding views remain unobstructed, blending seamlessly into the space.

3

Photos

the Equilibrio table at Brisa House



DESIGN PIECES

1

Libélula table

With our DNA, the Libélula table is inspired by the wings of a dragonfly, the legs of the table add lightness and open up the view of those in the home to the beautiful surrounding landscape.

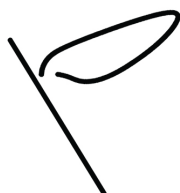
The amorphous top inserts an unpredictable element that, together with the natural veins of the rafaello marble, make this piece very well suited to the briefing. A design with a lot of personality, unprecedented, exclusive and inserted within the interior project already proposed.

2

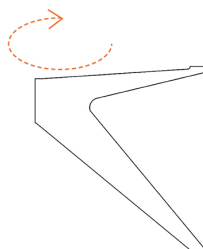
Diagrams



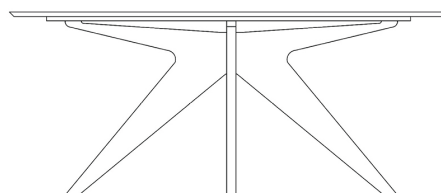
Dragonfly



Inspired by dragonfly wings



Four legs are created to support the tabletop.



The result: the Libélula table.

3

Photos

the Equilíbrio table at Brisa House



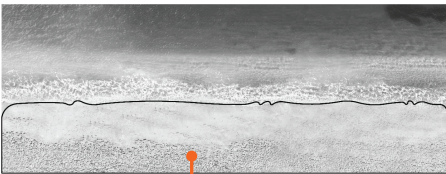
DESIGN PIECES

1 Onda sideboard

Inspired by the coast of São Paulo, the ONDA sideboard, designed by us, was created based on a photo of Iporanga beach, eternalizing a moment of touch between sea waves and the sand. The curved doors in Krien were shaped in an organic and symbolic way to translate the genius loci of the piece into furniture design.

2 Diagrams

Picture of the Iporanga beach



Marking of the ocean waces on the beach sand.



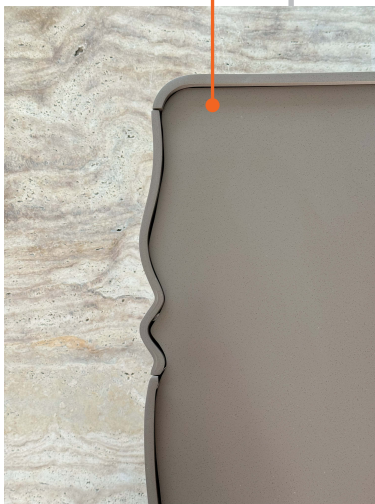
Shape of the sideboard



The Onda Sideboard

3 Photos the Onda sideboard at Brisa House

Detail

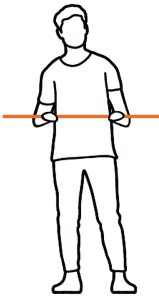


DESIGN PIECES

1 Haste Lamp

Created to illuminate a sculpture in a homogeneous way, the HASTE lamp, designed by us, is a horizontal minimalist luminous body that floats in space, without adornments or ornamentation. Sometimes, the best way to be present in space is not to compete with pre-existing ones.

2 Diagrams



Haste



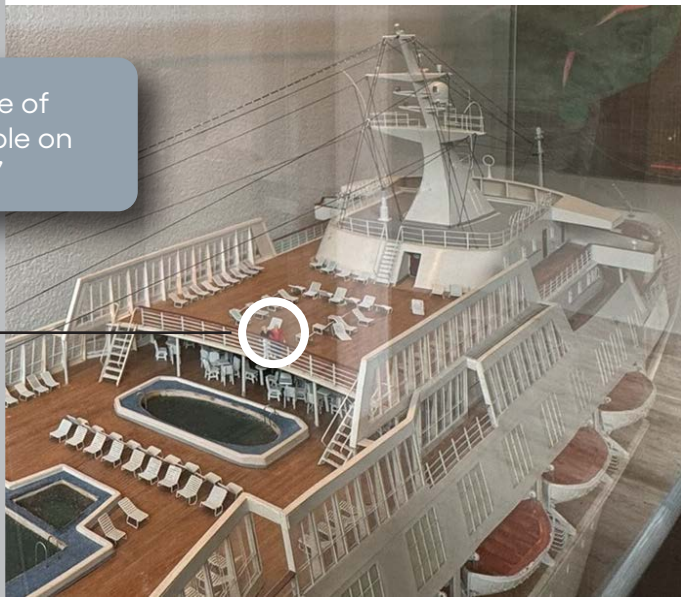
Before

The space before the Haste lamp.

“Miniature of the couple on the ship”

A marriage proposal at sea.

The ship is a miniature, where the couple got engaged. The Haste lamp was designed specifically to highlight this significant moment for the owners.



DESIGN PIECES

1

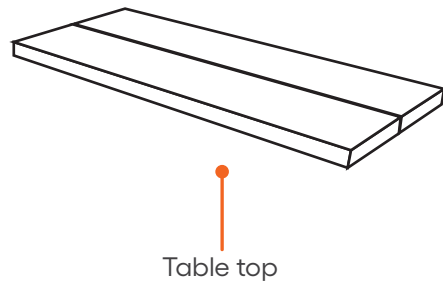
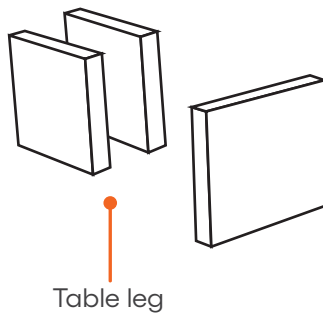
Stonehenge table

Designed by us, the table is inspired by the robustness of the Neolithic stones of Stonehenge. The tabletop and structure are formed solely by the positioning of the parts, all composed of the same material, raw and timeless.

It was an attempt to utilize leftover materials from the house under construction, for which we also designed the entire interior project.

2

Diagrams



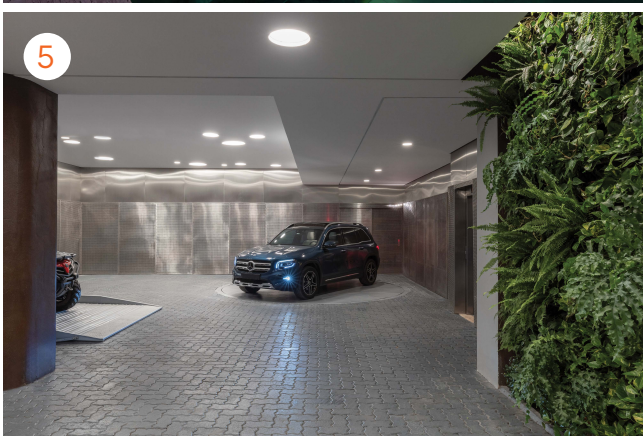
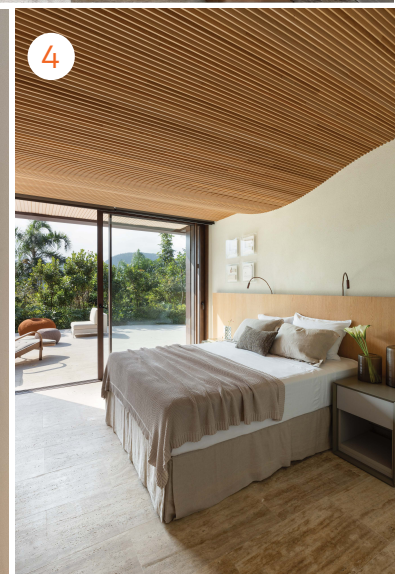
3

Photos

the Stonehenge table
at Brisa House

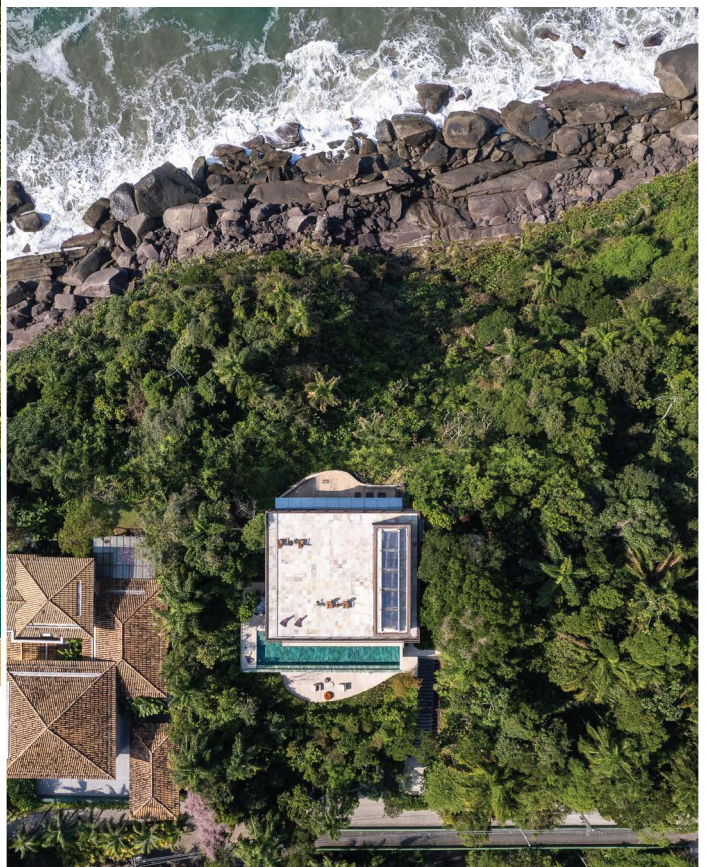


MORE PHOTOS



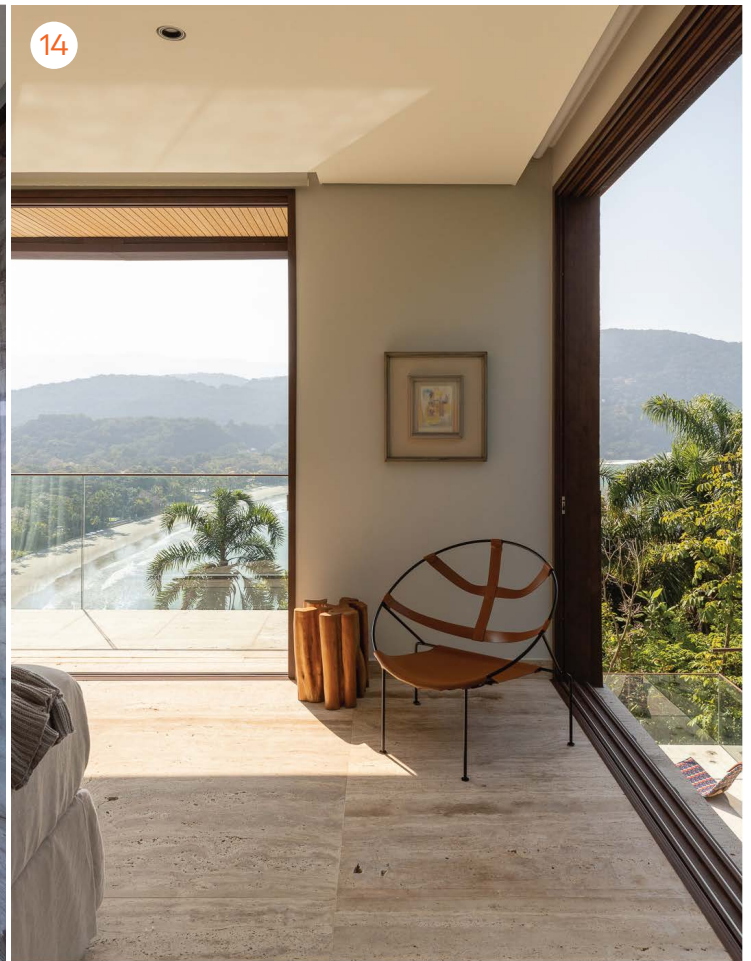
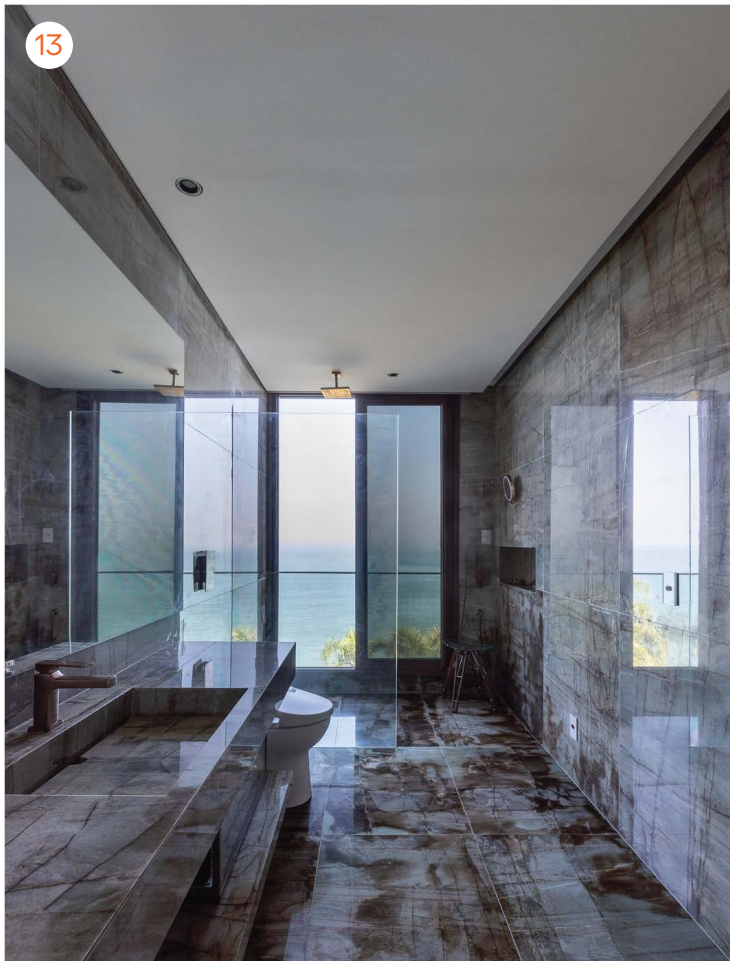
- 1 - Brisa House - Living
- 2 - Guest room
- 3 - Private circulation
- 4 - Guest room
- 5 - Garage
- 6 - Home TV
- 7 - Swimming pool

MORE PHOTOS



- 8 - Swimming pool
- 9 - Garden
- 10 - Swimming pool
- 11 - Private Balcony
- 12 - Brisa House

MORE PHOTOS



13 - His master bathroom
14 - Master suite
15 - Private balcony