

An educational place
at the heart of the community

September
2025

Architecture



OVERVIEW

The New **Manawan Awacak Okiskinohamatowikamikowaw Elementary School** is part of a new residential and community development, offering an educational and social environment tailored to the needs of the Atikamekw community. Its architecture integrates cultural and natural elements, with materials inspired by the environment and bright spaces that promote learning and well-being. Designed to accommodate 450 students in more than 40 classes, the school features emblematic spaces such as a double-height atrium, a gymnasium bathed in natural light and a green roof serving as an outdoor learning space. The panoramic library, designed for the contemplation of the six Atikamekw seasons, and ecological solutions such as geothermal energy, bear witness to a sustainable approach rooted in local culture.

Press Kit purpose

The purpose of this press kit is to present the New Manawan Awacak Okiskinohamatowikamikowaw Elementary School, an innovative architectural project designed to meet the community's educational needs. By sharing this achievement, we aim to highlight best practices that combine cultural integration, sustainability and student well-being.

MAIN ENTRANCE



LIBRARY





EXTERIOR VIEW BY DRONE

ARCHITECTURAL CONCEPT

The new Awacak Okiskinohamatowikamikowaw (meaning “little beings of light”) elementary school in Manawan was designed to reflect the Atikamekw cultural identity while meeting educational and community needs. The architectural approach, aimed at harmoniously integrating the building into Manawan’s natural environment, is distinguished – among other things – by its bold, dynamic roofs. An architectural approach on a smaller scale – like little houses – for a smooth transition for young preschool students. Bright, flexible and accessible spaces encourage learning, intergenerational sharing with the community and gradual discovery of the site. The project aims to provide students with a stimulating and adapted learning environment, with playful spaces in touch with the surrounding nature, fostering academic and social development. The program revolves around a strong central core composed of three adjoining common spaces: the atrium, the gymnasium and the outdoor courtyard. The circulation axes, classrooms and certain common spaces are punctuated by nature-inspired colors (terracotta, shades of green and yellow) and geometries on the floor and vertical planes that energize the interior ambience. These geometries are also observed on the exterior cladding, in continuity with the geometry of the roof.

INTERIOR COURTYARD



CHOICE OF MATERIALS AND SHAPES

The materials used are inspired by Atikamekw culture and the surrounding natural environment. Blond and white wood-effect aluminum cladding, brightly colored (yellow) aluminum panels and vertical aluminum blades in the image of traditional paddles recall cultural and natural elements of the community. The interior spaces emphasize natural light, with large openings and views to the outside. Engraved motifs on wooden panels, inspired by the scraping technique, reinforce the link with culture. The choice of durable materials, such as aluminum and masonry, ensures the building's longevity, while the integration of geothermal energy reduces the project's environmental footprint.



MAIN ENTRANCE

FRONT EXTERIOR VIEW



MAIN ENTRANCE AND RECEPTION



ARTS AND CRAFTS ROOM



TECHNICAL DETAILS AND KEY DATA

Project name
New Elementary School Manawan Awacak Okiskinohamatowikamikowaw

Project location
Manawan, Qc

Commissioning : August 23, 2024
Owner’s name: Conseil des Atikamekw de Manawan
Consortium : B+B architecture + design inc | CCM2 architectes
Structure/Civil : GBI experts conseil inc
Mechanical/Electrical : GBI experts conseil inc
Construction : Therrien Entrepreneur Général
Furnishings : Consulis
Outdoor playground equipment : Eskair
Construction budget : \$52M
Photo credits : Photos : Dave Tremblay
Drone : Pierre-Alexandre Boutet



CLASSROOM

EXTERIOR VIEW – REAR ENTRANCE AND CANTILEVERED LIBRARY



CROSS SECTIONS



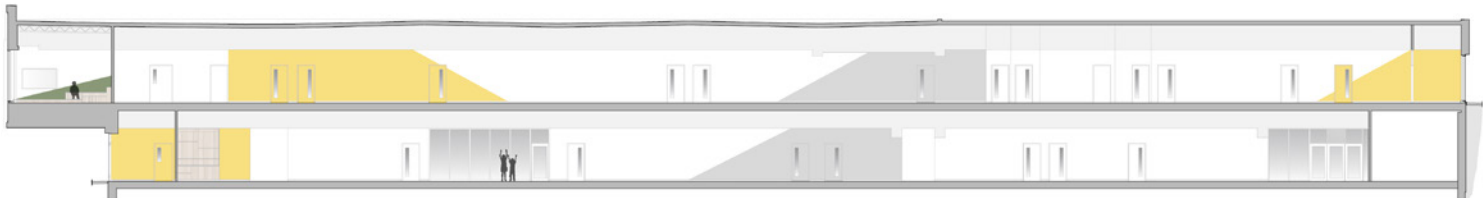
COUPE TRANSVERSALE
COUR INTÉRIEURE | 01



COUPE TRANSVERSALE
ATRIUM | 02



COUPE TRANSVERSALE
COUR INTÉRIEURE | 03



0 10m

COUPE TRANSVERSALE
CORRIDOR | 04

ELEVATIONS



ÉLEVATION
NORD-EST



ÉLEVATION
NORD-OUEST



ÉLEVATION
SUD-OUEST



ÉLEVATION
SUD-EST

0 10m

PHOTOS

EXTERIOR VIEW BY DRONE



CLASSROOM



LIBRARY



PHOTOS

MUSIC ROOM



DAYCARE ROOM



GYM



PHOTOS

ATRIUM



CLASSROOM



LIBRARY



PHOTOS

ATRIUM



PROFILS DES FIRMES

CCM2

Creativity and innovation motivate the CCM2 team at all times. The firm favors distinctive architecture that revolves around the dynamic integration between building, user and environment, in a sympathetic and unpretentious approach.

B+B architecture + design

Since it was founded in 1992, B+B architecture + design's architectural approach has been based on a skilful balance between the notions of space and quality of life for users. By prioritizing close collaboration with its clients and an approach tailored to each project, the firm sets itself apart by designing innovative projects offering stimulating living environments, quality spaces that are bright and functional to meet the specific needs of users.

MAIN ENTRANCE



USEFULL INFORMATION

Contact

Genevieve Forest | genevieve@ccm2.ca | 581-978-3466

Links to additional resources

www.ccm2.ca et www.bplusb.ca

CCM2

B+B ARCHITECTURE
+ DESIGN INC.