

OFFICE SPACE - CFE

PARIS - FRANCE

LOCAL design an office space in Paris



PRESS RELEASE

local
www.locallll.com
paris@locallll.com
+33 6 78 45 37 11

171 quai de Valmy - 75010 PARIS France

LOCAL

OFFICE SPACE - CFE

PARIS - FRANCE

Informations

Client

Caisse des Français de l'Étranger (public)

Localisation

Paris, France

Status

completed 2023

Categorie

Office

Surface area

70 m²

Architecte

LOCAL

MEP

MTC

Photographer

David Cousin-Marsy - VUenVille

Bertrand Fompeyrine - BCDF studio

Title

LOCAL design an office space in Paris

Quote

Offer the generosity of an open-space environment, while everyone has his own office.

Short project description

Amid the global health crisis, the Caisse des Français de l'Étranger (CFE)—the institution responsible for providing healthcare coverage to French expatriates—sought to establish a new reception and work space in the heart of Paris.

The design was conceived by LOCAL, who responded with a flexible environment rooted in the principles of International Style architecture. The space is defined by a rigorous and airy composition, reflecting the CFE's global mission in social security. To accommodate between three and five workstations within a compact footprint, LOCAL developed a hybrid typology between open-plan and enclosed office. Large panes of glass provide a permanent spatial framework, while additional configurations are made possible through integrated acoustic curtains.

Despite the limited surface area, the design allows for a wide range of uses, encouraging collaboration among team members and supporting the institution's professional activities.

Long project description

Located in the heart of Paris' 8th arrondissement, the new welcome area for the Caisse des Français de l'Étranger (CFE) replaces the entrance hall of an existing office building. Facing due north, on the ground floor of a wide Haussmannian boulevard, the 70sqm space benefits from a single window onto the street and is designed to provide the necessary comfort for two separate offices and a meeting room for ten people.

[High and low resolution images via dropbox: click here](#)

PRESS RELEASE

local

www.locallll.com

paris@locallll.com

+33 6 78 45 37 11

171 quai de Valmy - 75010 PARIS France

LOCAL

Inspired by the cinematic sequences of Jacques Tati, the team of LOCAL conceived a space that embraces a form of deliberate neutrality. The reference to International Style architecture serves as a subtle echo of the CFE's global mission. The project bridges two narratives: that of a public institution ensuring healthcare coverage for French citizens worldwide, and that of a modernist architectural language that celebrates transparency, lightness, and clarity of form. The design responds to two core challenges: introducing natural light deep into the volume and ensuring the space remains flexible in an era of ever-evolving work environments.

The layout follows a rigorous spatial logic. Storage and technical elements are positioned along the perimeter, liberating a central, open space for workstations. Large glazed partitions subdivide the space while maintaining visual continuity and allowing all offices a shared view onto the street. Acoustic separation from neighboring spaces is achieved through a high-performance shell of compressed recycled paper, ensuring full sound insulation. Raw materials are used throughout, enriched by diverse finishing techniques. A custom ceiling, conceived as an inverted shed, features anodized aluminum trays that incorporate linear lighting and ventilation elements. Light reflects across the angled panels to create a soft, immersive ambiance throughout the space.

The humid block, containing both restroom and kitchenette, is clad in mirror-polished stainless steel. The reflective surfaces imbue the room with a refined spatial quality. Two seamless doors, set flush into the walls, are revealed only by subtle vertical gaps serving as handles. This attention to detail contributes to an interplay of reflections and transparencies that generates a series of visual compositions, strict and orthogonal, yet almost abstract.

Each workstation benefits from its own character. One desk is anchored in a warm atmosphere thanks to its timber furnishing, while the second, defined by an open metal cabinet and linear shelving, offers a more versatile arrangement. The meeting room is framed by an opaline glass wall that echoes and expands the spatial experience. Concealed behind two aluminum panels in the room's corners, large acoustic curtains allow the central table originally designed for ten, to be reconfigured into three independent workstations. When drawn, the curtains create intimate, almost monastic spaces conducive to quiet focus.

The result is a space where materials interact with light to produce an atmosphere that feels removed from its Parisian context. It offers an international quality, a refined and adaptable alternative to the conventional workspace, crafted with precision and attention to detail.

PRESS RELEASE

local

www.locallll.com
paris@locallll.com
+33 6 78 45 37 11

171 quai de Valmy - 75010 PARIS France

LOCAL



overview

© Bertrand Fompeyrine - BCDF studio



view from the access SAS

© David Cousin-Marsy - VUenVille



corridor

© David Cousin-Marsy - VUenVille



office 1

© David Cousin-Marsy - VUenVille



ceiling detail

© David Cousin-Marsy - VUenVille



corridor, view of the sanitary block

© David Cousin-Marsy - VUenVille

PRESS RELEASE

local

www.locallll.com
paris@locallll.com
+33 6 78 45 37 11

171 quai de Valmy - 75010 PARIS France

LOCAL



corridor

© David Cousin-Marsy - VUenVille



access kitchenette

© Bertrand Fompeyrine - BCDF studio



handle details

© Bertrand Fompeyrine - BCDF studio



kitchenette

© Bertrand Fompeyrine - BCDF studio



view of the sanitary block

© David Cousin-Marsy - VUenVille



office 2

© Bertrand Fompeyrine - BCDF studio

PRESS RELEASE

local

www.locallll.com
paris@locallll.com
+33 6 78 45 37 11

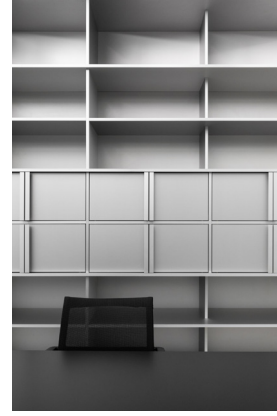
171 quai de Valmy - 75010 PARIS France

LOCAL



office 2

© Bertrand Fompeyrine - BCDF studio



office 2

© Bertrand Fompeyrine - BCDF studio



furniture detail

© Bertrand Fompeyrine - BCDF studio



ceiling details

© Bertrand Fompeyrine - BCDF studio



view from office 2 towards the meeting room

© Bertrand Fompeyrine - BCDF studio



meeting room

© Bertrand Fompeyrine - BCDF studio

PRESS RELEASE

local

www.locallll.com
paris@locallll.com
+33 6 78 45 37 11

171 quai de Valmy - 75010 PARIS France

LOCAL



meeting room

© Bertrand Fompeyrine - BCDF studio



ceiling detail with curtain rails

© David Cousin-Marsy - VUenVille



meeting room

© David Cousin-Marsy - VUenVille



meeting room

© David Cousin-Marsy - VUenVille



meeting room partitioned into 3 offices

© David Cousin-Marsy - VUenVille



partitioned meeting room

© Bertrand Fompeyrine - BCDF studio

PRESS RELEASE

local

www.locallll.com
paris@locallll.com
+33 6 78 45 37 11

171 quai de Valmy - 75010 PARIS France

LOCAL



ceiling and curtain detail

© David Cousin-Marsy - VUenVille



view of meeting room - position 1

© David Cousin-Marsy - VUenVille



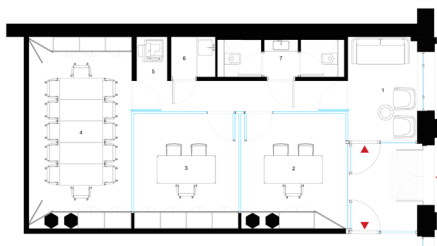
view of meeting room - position 2

© David Cousin-Marsy - VUenVille



view of meeting room - position 3

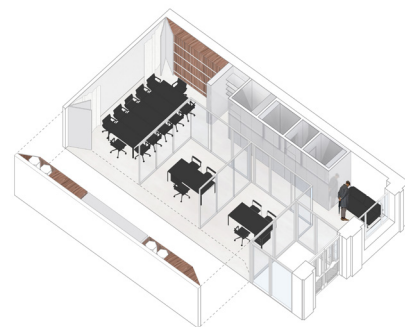
© David Cousin-Marsy - VUenVille



Plan 1 | 2 | 3 | 4 | 5 | 6 | 7
accueil | bureau | bureau | salle de réunion | photocopieur | cuisine | wc

layout plan

© LOCAL



axonometry

© LOCAL

PRESS RELEASE

local

www.locallll.com

paris@locallll.com

+33 6 78 45 37 11

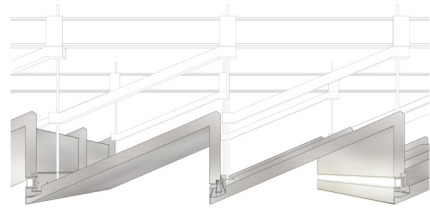
171 quai de Valmy - 75010 PARIS France

LOCAL



detail furniture / ceiling

© LOCAL



ceiling assembly detail

© LOCAL

PRESS RELEASE

local
www.locallll.com
paris@locallll.com
+33 6 78 45 37 11

171 quai de Valmy - 75010 PARIS France

LOCAL