

# Housing NOW

## bamboo construction portfolio



Housing NOW is a bamboo construction company based in Myanmar, focused on building schools, clinics, and housing for communities in need. We specialize in low-cost, locally sourced, and quickly deployable structures that are built to last. Our team combines hands-on field experience with deep technical knowledge of bamboo construction.

We've worked alongside NGOs to deliver safe, functional spaces in complex environments—rural areas, urban neighborhoods, and displacement camps. Every project is adapted to local constraints, with designs that prioritize speed, strength, and dignity.

This portfolio shows what we've already built—and how we can help you build what's next.



get involved

## Latest news



### Housing NOW

Nikkei Inc. has awarded the Grand Prize for the 4th NIKKEI ASIA AWARD to Housing NOW, a Myanmar-based startup specializing in bamboo housing construction. The company provides eco-friendly, affordable housing made from bamboo, constructing refugee shelters and clinics at a cost starting from 1,000USD per unit. Additionally, by involving low-income individuals in the production process, Housing NOW contributes to revitalizing local communities.

Myanmar, a country with a young population exceeding 50 million, has a per capita GDP of just over 1,000USD—about one-thirtieth of Japan's. In this economic context, Housing NOW's efforts significantly support the development of this "high-growth potential nation." Co-founder Raphaël Ascoli has expressed a strong commitment to the mission, stating, "We want to contribute to rebuilding the nation through bamboo."



Kyaw Zin Latt (left) and Raphaël Ascoli, co-founders of Housing NOW





# Housing NOW

## prefabricated houses residential



Location: Bago Region  
Year: 2025  
Units Built: 32  
People Housed: 147  
Design: Blue Temple  
—

**Our latest 26 houses survived a 7.7 magnitude earthquake** without a scratch, proving the reliability of our structurally interlocking bamboo modular system. After 2+ years of R&D and field prototyping, we finalized a design using small-diameter bundled bamboo – an abundant, undervalued material. Each unit is built in 7 days for ~1,300 USD and has since withstood both seismic and high-wind events. Construction is fully community-driven: IDPs are trained and hired for fabrication, assembly, and finishing. The modular frame design enables layout and façade variation while ensuring structural performance and speed of deployment.

—  
Raphaël Ascoli  
Kyaw Zin Latt (KoZin)  
António F. Duarte



Award winning project:

- 1- MIT SOLVE - Massachusetts Institute of Technology - 2023
- 2- The Good Energies Prize supported by Good Energies Foundation - 2023
- 3- Innovation30: Young Climate Innovators Shaping the Future - 2023
- 4- Nikkei Asia Award - 2025



get involved







# Housing NOW

## earthquake relief residential



Location: Mandalay Region  
Year: 2025  
Units Built: 41  
People Housed: 103 (estimated)

Local families contribute carpenters, design preferences (entrances, window placement, internal partitions, shrine spaces), and layout adaptations based on household size. Doors and windows are often fabricated by skilled workers within the village or nearby.

Housing NOW provides the technical backbone: seismic bracing, insulation strategy, and structural standards for elevated footings. We handle all material procurement—treated bamboo, non-inflated timber, galvanized roofing—and manage transportation from Bago, storage in regional hubs, and last-mile delivery.

Team: Raphaël Ascoli, Ko Zin, Htet Htet



get involved







# Housing NOW

habitat for humanity  
residential



Location: Bago Region  
Year: 2016  
Units Built: 108  
People Housed: 340  
—

Between 2014 and 2016, Ko Zin served as the lead contractor for Habitat for Humanity Myanmar, delivering transitional homes and bamboo toilets for low-income families in rural Bago villages. The project followed a volunteer-build model, where international donors worked side by side with local builders during short construction missions.

Housing materials were adapted to rural sourcing conditions, with bamboo used structurally and for sanitation blocks. Ko Zin oversaw all site coordination, logistics, and quality control throughout the program's three-year cycle.

—  
Team: Ko Zin  
—



get involved





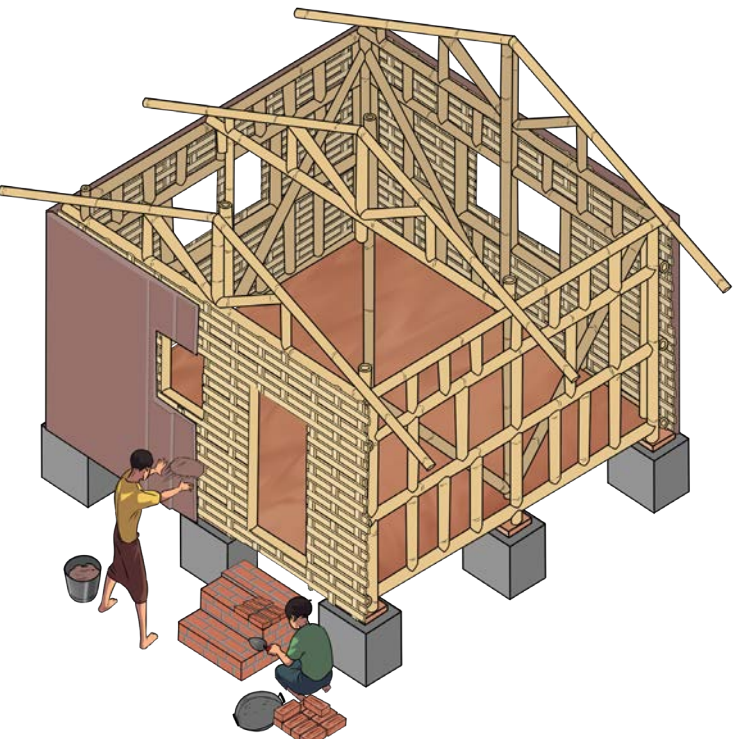


# DIY manual residential

The Housing NOW Bamboo Manual is a practical, field-proven guide that empowers communities across Myanmar to build safe, durable, and climate-appropriate bamboo homes using local materials and simple tools. Developed from over 10 years of hands-on humanitarian construction experience, it blends indigenous building traditions with refined, low-cost innovations for harvesting, treatment, joinery, and maintenance.

The Housing NOW Bamboo Manual is a practical, field-proven guide that empowers communities across Myanmar to build safe, durable, and climate-appropriate bamboo homes using local materials and simple tools. Developed from over 10 years of hands-on humanitarian construction experience, it blends indigenous building traditions with refined, low-cost innovations for harvesting, treatment, joinery, and maintenance.

Team: Raphaël Ascoli  
Htoo Aung

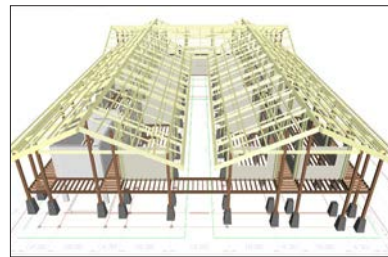


generally not recommended because of difficulty with the passage of intervertebral discs during the protruding and retractor extension action when the action may cause the back.



# Housing NOW

## Putao clinic Health care center

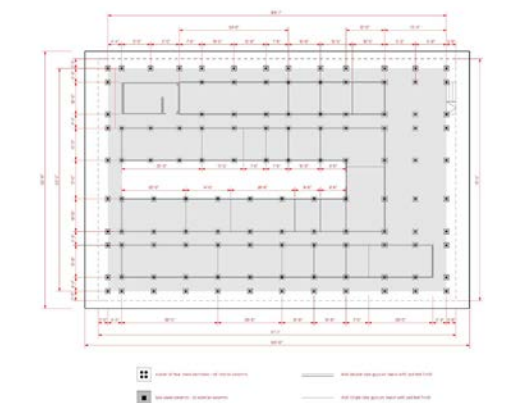
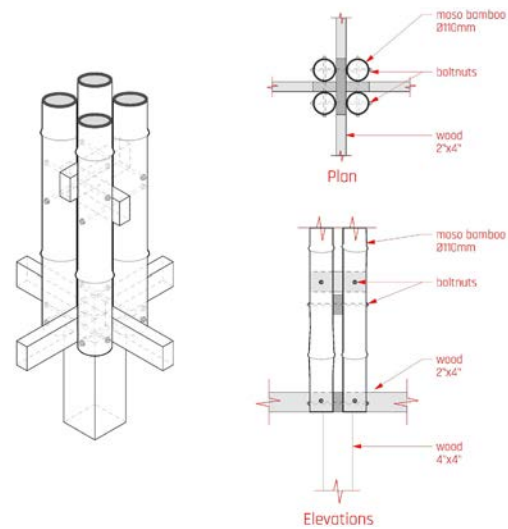


Putao-0 (Burmese Himalayas)  
2024

- COMPLETED  
size: 485 m<sup>2</sup>  
nbr of users: 100,000 patients/year

The Putao Clinic is a healthcare facility located in the Burmese Himalayas, designed to serve local communities with essential treatments for HIV, malaria, and tuberculosis. Constructed entirely from locally harvested bamboo and wood, the clinic exemplifies sustainable and community-centered architecture, with an expected lifetime of 25 years. This project highlights our commitment to using indigenous materials and building techniques to create lasting, impactful healthcare solutions in remote regions.

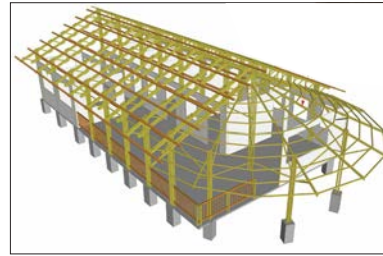
- raphaël ascoli  
htoo aung



get involved



**Thanlyin clinic**  
Health care center

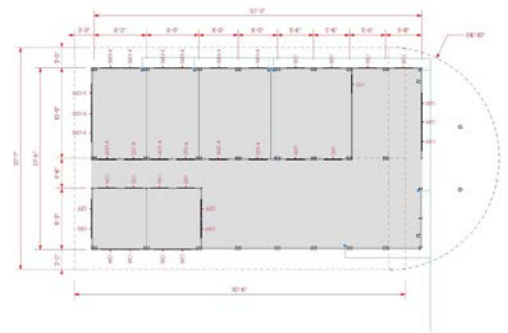


yangon  
2024

COMPLETED  
size: 195 m<sup>2</sup>  
nbr of users: 30,000 patients/year

The Thanlyin Township Clinic is a medical facility located in the Yangon Region, built entirely from bamboo to provide sustainable healthcare solutions. Designed with a lifespan of 25 years, this clinic demonstrates our commitment to utilizing eco-friendly, locally sourced materials. The project aims to offer essential medical services to the surrounding communities, ensuring accessible healthcare in an area where it is critically needed.

raphaël ascoli  
htoo aung



get involved



# Housing NOW

## sports field playground

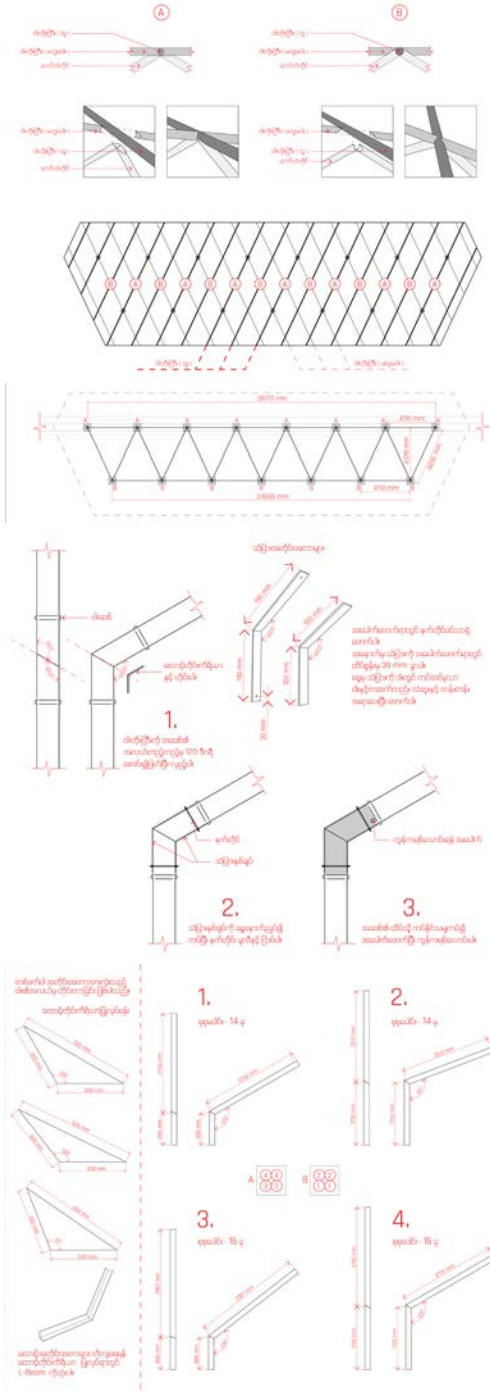


yangon  
2024  
Design: Blue Temple

COMPLETED  
size: 293 m<sup>2</sup>

The school tasked us with designing a bamboo canopy to shade the bleachers and create an evening event space, considering proper lighting. The structure's grid aligns with garden walkways and green spaces for unobstructed circulation. A diamond-shaped grid maximizes coverage and creates parallax effects. The bamboo neo-brutalist design, with steel footings and carefully chosen colors, emphasizes the bamboo's natural tones and complements the sports center.

raphaël ascoli  
bone mo  
htoo aung



get involved



# Housing NOW

## zen school playground

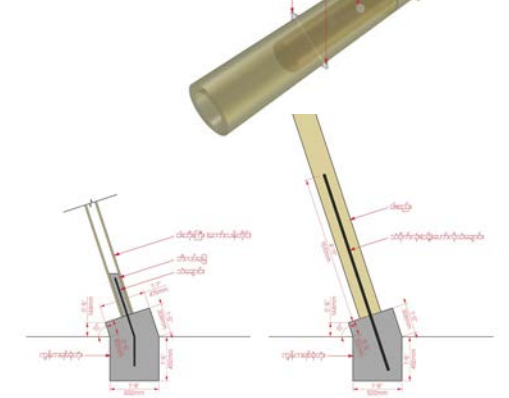
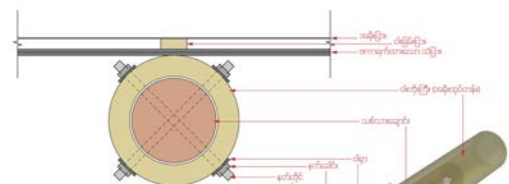
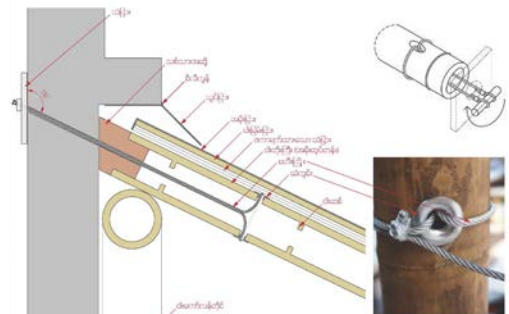
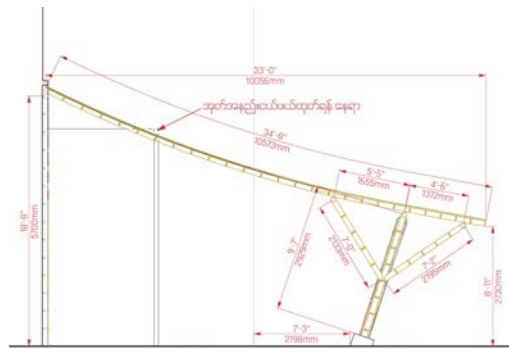


yangon  
2024  
Design: Blue Temple

COMPLETED  
size: 108 m<sup>2</sup>

Our design process focused on the elevation: specifically, the arched facade of the existing building. The canopy is conceived as a spatial extrusion of this facade, mirroring its rhythm, proportions, and the expressive quality of its geometry. This respectful continuation frames the building's most valuable elements, inviting reflection on the original architecture. Structurally, the canopy takes cues from an Indonesian radial compression joint for bamboo tensile systems, which inspired a new kind of tectonic logic. The angled columns are inclined purely for performance, optimizing load transfer with minimal material. Together, the facade's formal beauty and the joint's structural ingenuity guided the design into its final, expressive form.

raphaël ascoli  
htoo aung



get involved



# Housing NOW

plot abc  
public space

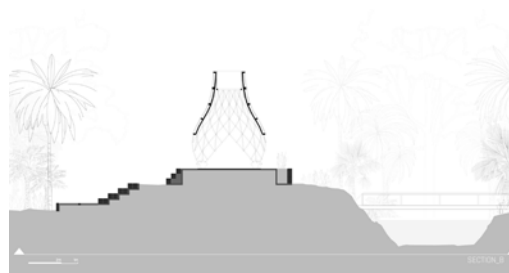
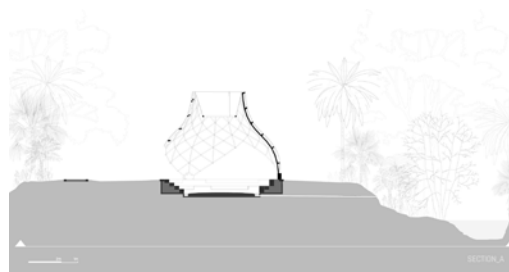
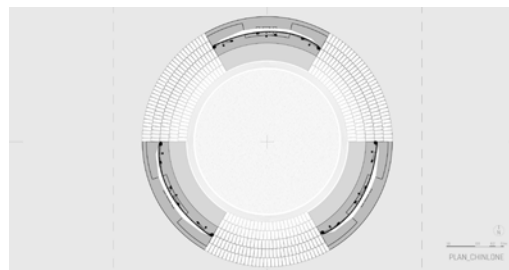


yangon  
2020  
Design: Blue Temple

-  
COMPLETED  
size park: 1,620 m<sup>2</sup>

-  
Design of a 0.4-acre community public space in Yankin Township. Inspired by Myanmar traditional bamboo scaffolding techniques of construction, the space shelters a multi-functional sport center/ community event space; a zayat (resting area for seniors)/community e-library, and a chinlone sport area.

-  
raphaël ascoli  
kyaw zin latt  
nyan linn aung  
françois le pivain  
jared benevict  
kristof crolla  
kathy khine  
antónio f. duarte  
aung naing win



DESIGNTRUST  
信言設計大使  
AN INITIATIVE OF THE  
HONG KONG AMBASSADORS  
OF DESIGN

BETTER  
WORLD  
CHALLENGE  
EXPLORING NEW IDEAS FOR  
A SUSTAINABLE FUTURE



get involved





# Housing NOW

## infinity playground

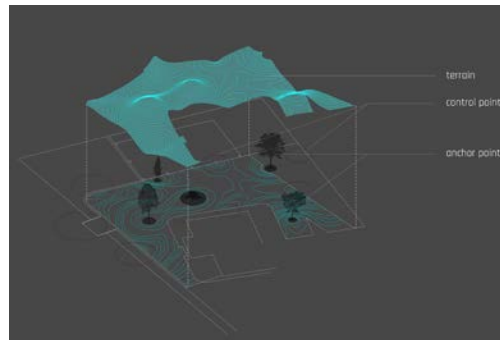
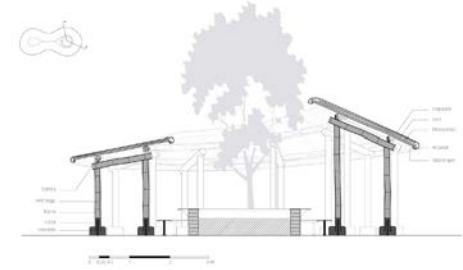


yangon  
2022  
Design: Blue Temple

-  
COMPLETED  
size: 114 m<sup>2</sup>  
-

The playground, initially just a concrete floor, now features an infinity-shaped bamboo structure weaving around two trees. This structure includes a series of games forming an endless obstacle course: bamboo jungle, fishing net, monkey bars, swings, and Myanmar-style hopscotch. Made from three bamboo species, it has seating for teachers and LED lights for ambient illumination. Painted lines create a 2D topography, inviting imaginative play without dictating specific games.

-  
raphaël ascoli  
nyan linn aung  
bhone mo



get involved



# Housing NOW

## shade playground

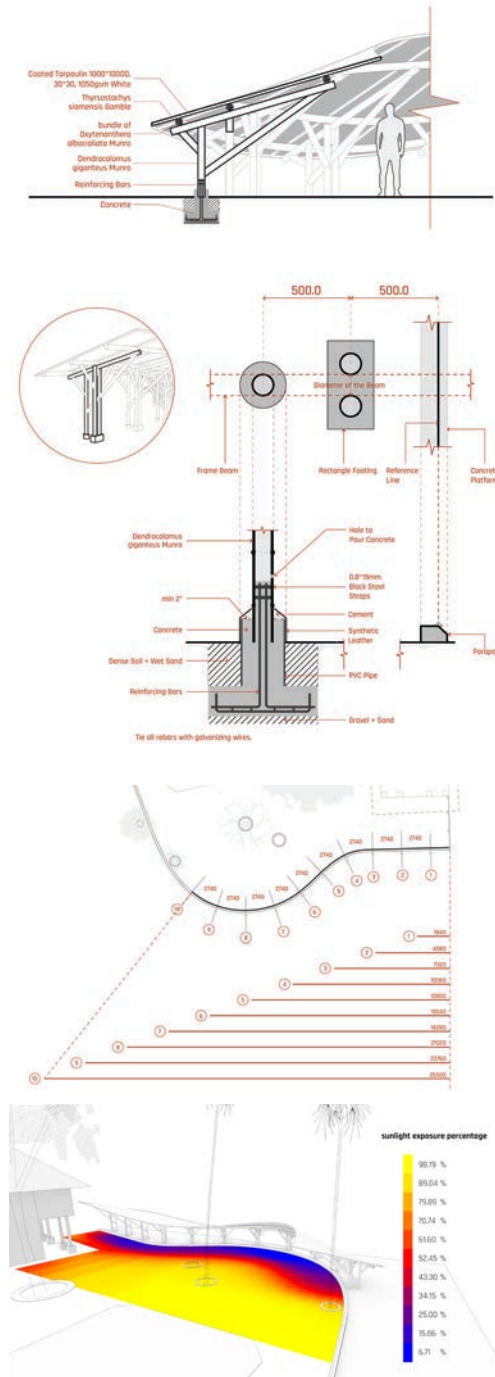


yangon  
2023  
Design: Blue Temple

COMPLETED  
size: 127 m<sup>2</sup>

This multifunctional structure serves as a shading device for the school playground and a cultural event space. Designed to maximize shade without encroaching on the courtyard, all footings are placed on the grass. The courtyard's curvature inspired the structure's design, ensuring it aligns with the site's context. During cultural events, it becomes a decorative backdrop for booths and exhibitors, seamlessly blending with the environment.

raphaël ascoli  
nyan linn aung  
bhone mo



get involved



# Housing NOW

## bamboo playground educational

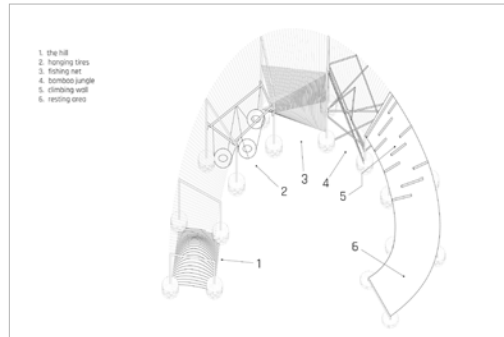
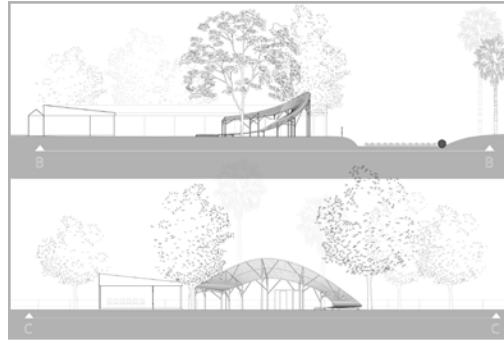
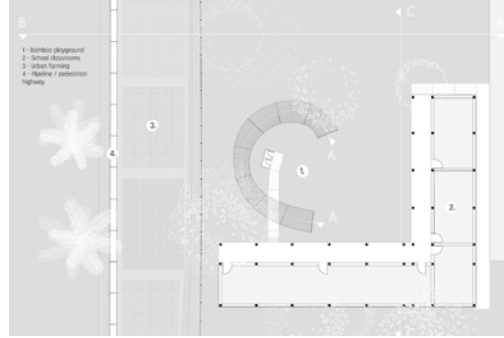


yangon  
2019  
Design: Blue Temple

COMPLETED  
size: 95 m<sup>2</sup>

Construction of a bamboo playground within a local public middle school in Yankin Township. Playing is an important part of child's personal development, this playground provides imagination-fueled, self-directed games to create new ways of playing, promote camaraderie and have the kids grow and learn about danger management in a safe environment.

raphaël ascoli  
kyaw zin latt  
nyan lin htet  
jared benevict



**DESIGNTRUST**  
信言設計大使  
AN INITIATIVE OF THE  
HONG KONG AMBASSADORS  
OF DESIGN

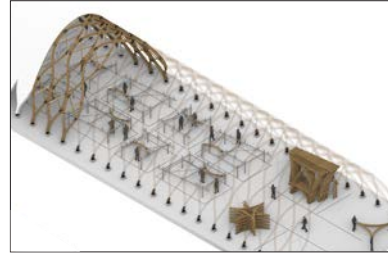


get involved



# Housing NOW

## Warehouse Prefabrication workshop



bago  
2025  
Design: Blue Temple

- size: 550 m<sup>2</sup>

- This is a cutting edge project which involves designing and constructing a 5,000-square-foot warehouse in Bago, Myanmar, entirely from small-diameter bamboo. Inspired by the structural efficiency of bundled bamboo and informed by computational design techniques, the warehouse leverages modular prefabrication for rapid assembly. With an emphasis on sustainability and local craftsmanship, the design reflects cutting-edge bamboo construction principles, creating a resilient and scalable solution for industrial storage needs and the prefabrication of bamboo low-cost housing units for IDPs across Myanmar.

- raphaël ascoli  
bhone mo  
esteban morales



1st prototype

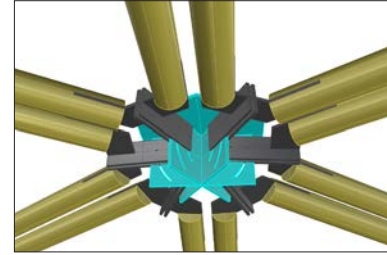


get involved



# Housing NOW

## BentShelters IDP camp community center



myanmar

2024

Design: Blue Temple

- size: modular

- target audience: IDPs

- BentShelters combines sustainable design and mathematical precision to create modular emergency structures for displaced communities in Myanmar. Inspired by the pioneering work of French mathematician and architect Alain Lobel, our design leverages the active-bending properties of small-diameter bamboo to form adaptable, prefabricated units. With support from **3 MIT grants**, we are advancing a solution that is cost-effective, deployable, and scalable, addressing critical needs for infrastructure like classrooms, clinics, and community centers.

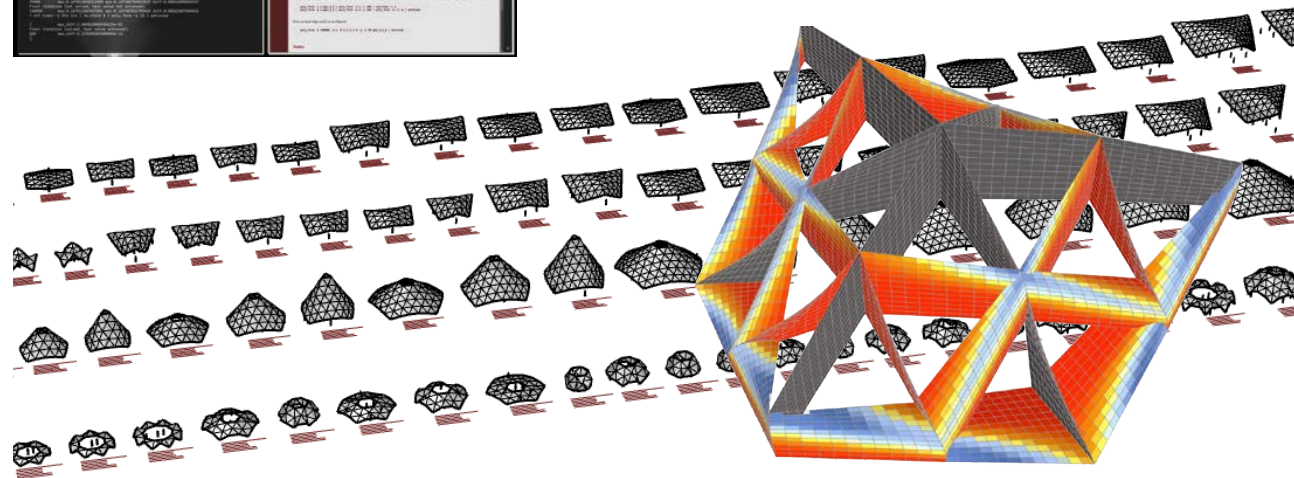
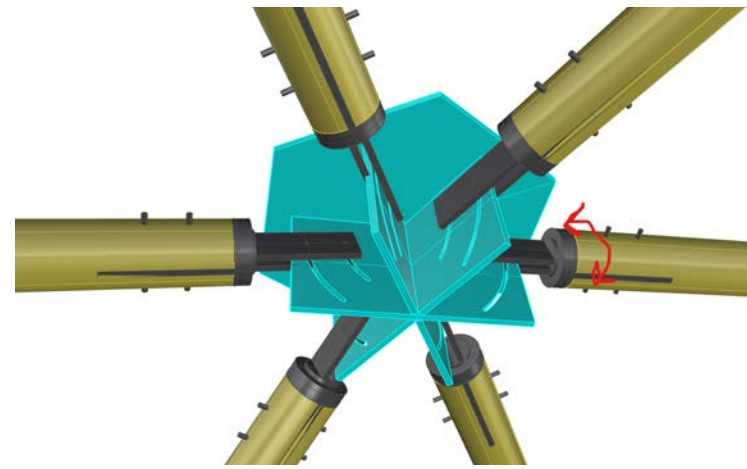
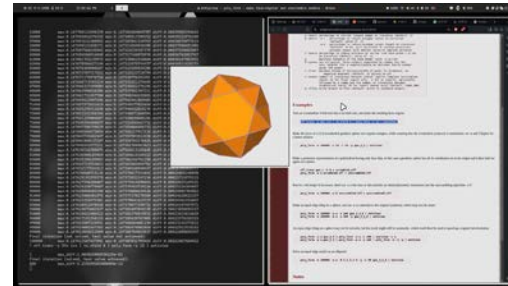
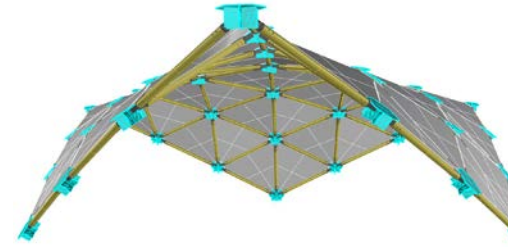
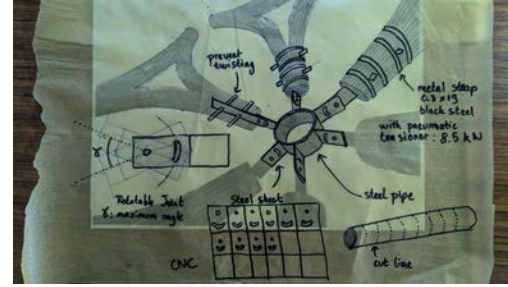
- raphaël ascoli

alex htet aung kyaw

medha bansal

htoo aung

-



Massachusetts  
Institute of  
Technology

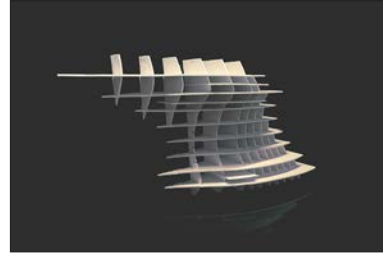


get involved



# Housing NOW

## staircase residential

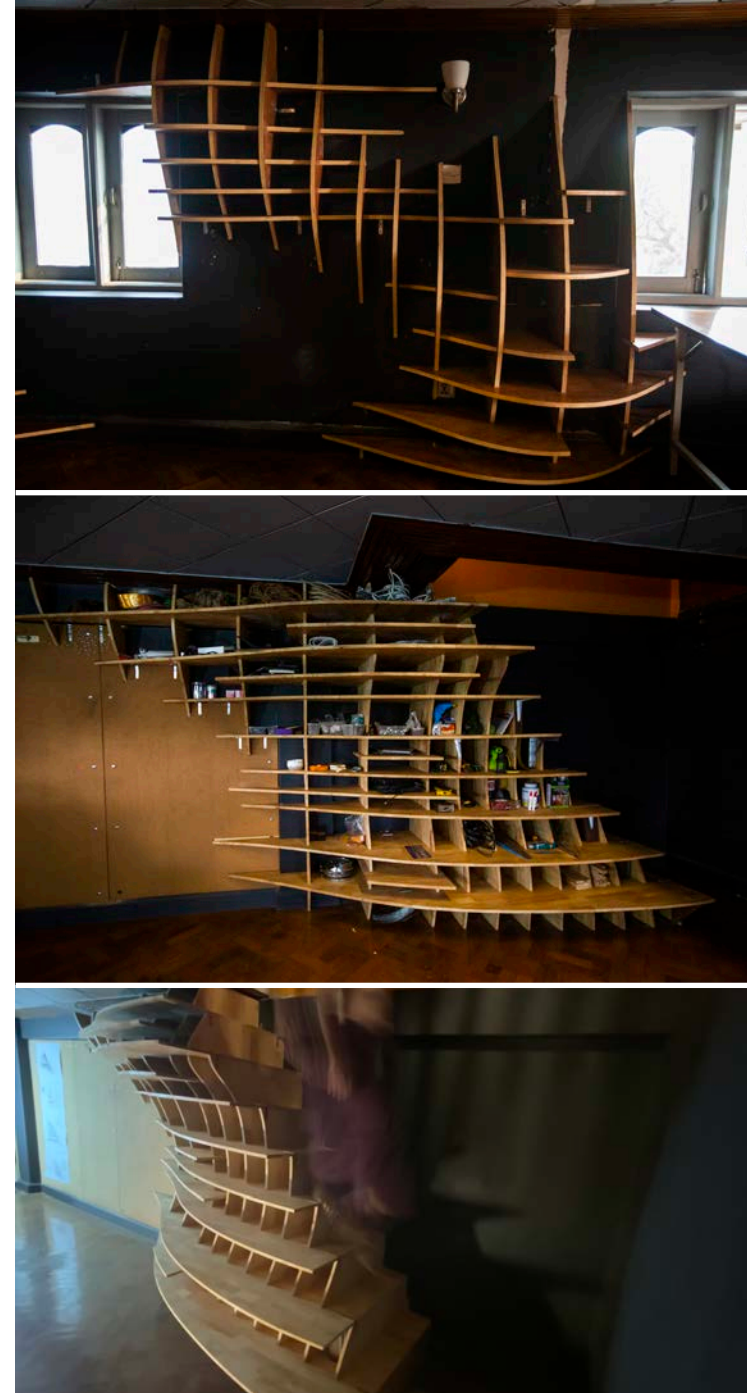
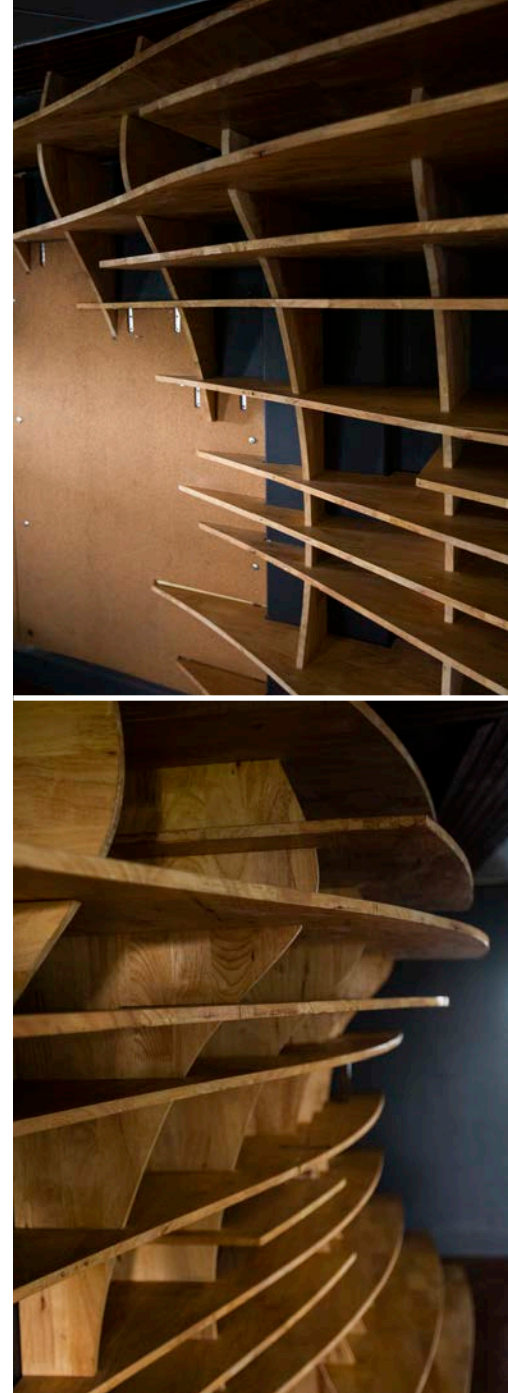


yangon  
2020

-  
COMPLETED  
size: 25 m<sup>2</sup>  
Design: Blue Temple

-  
A part of the office renovation project. Inspired by the Computational Fluid Dynamics (CFD) of indoor airflow simulations. Coming to reality by the simple wooden waffle structure with the aid of CNC systems.

-  
raphaël ascoli  
nyan linn aung  
bhone mo



get involved



# Housing NOW

community dock  
public space



indawgyi lake

2020

Design: Blue Temple

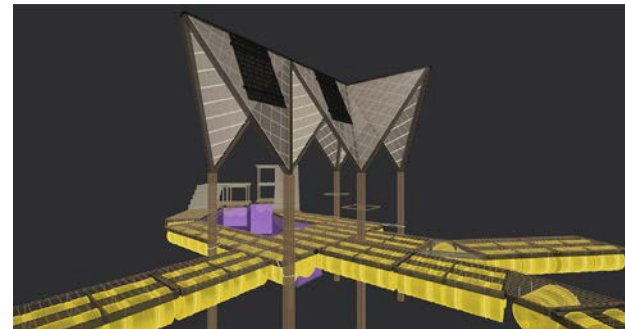
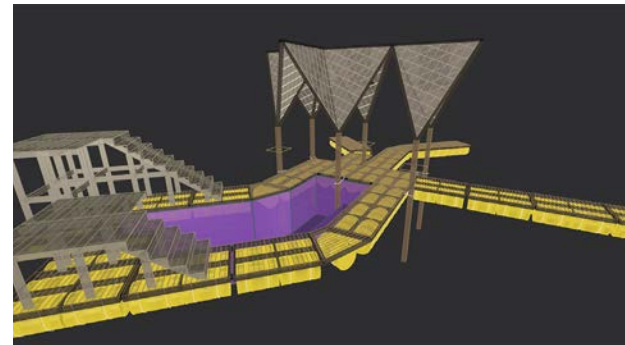
- ON-GOING

- Multifunctional modular dock design in Lontone village that uses recycled materials. Upgrading the existing dock, that needs to be moved twice a year, into a community center. This small infrastructure holds great importance for the village's daily activities, shrimp fishing, cleaning cloth, bathing, playing, boat docking.

raphaël ascoli

stephen traina-dorge

miles hamaker



get involved