

LION COFFEE





A cozy neighborhood haven for artisanal coffee and community, Lion Coffee blends minimalism with natural materials in a light-filled space.

Lion Coffee, a neighborhood coffee shop nestled on a side street in midtown Toronto, offers an intimate, light-filled retreat from the bustle of St. Clair Avenue West. Owned and operated by a young couple passionate about coffee and community, the café serves artisanal coffee, crafted drinks, and freshly prepared food made on-site. Designed by Dubbeldam Architecture + Design, the 460 sq. ft. space embraces simplicity and natural materials, reflecting the handcrafted quality of its offerings. Warm wood, sleek stone, and finely detailed finishes create an environment that is both inviting and refined.

The layout of the space is organized into a series of linear zones, each serving a distinct function. At one end, the coffee and food prep area behind the service counter is designed for optimal workflow. On the opposite side, the customer circulation zone is connected to a small seating area, which transitions into a long bar counter positioned directly in front of a large east-facing window, offering a bright, inviting spot for people-watching. This arrangement maximizes the compact footprint, ensuring smooth customer flow, while a small kitchen tucked in the back allows the owners to prepare freshly baked goods and sandwiches.

The design is anchored by the long service counter that spans the length of the space, featuring a sculptural, fluted wood front and a sleek white quartzite countertop. This counter serves as both the café's focal point and the place where customers interact with the



owners and staff. Its curved end, positioned near the top of the entry stairs, guides customers toward the ordering area and directs them around a corner where they can customize their drinks without disrupting the flow of others entering the café.

Constructed with a modest budget, the design employs materials that are both practical and rich in character. Durable engineered vinyl flooring ensures ease of maintenance, while finish-grade maple plywood millwork adds warmth, giving the space a rich yet unpretentious character. Elements like the slatted wood partition at the entrance subtly define distinct areas while maintaining the space's open, airy feel. A soft green wall and light wood

finishes create an uplifting atmosphere, complemented by floating shelves lined with curated coffee products and greenery that add both functionality and visual appeal.

Pendant lighting with wooden accents cast a warm, inviting glow, while large rice paper lanterns on a track add a playful textural contrast. These lanterns, along with the tables, can be adjusted to accommodate various setups for tasting events, allowing the space to easily transition from casual meetups to special gatherings. More than just a café, Lion Coffee serves as a community hub—a place where patrons can enjoy their daily rituals, whether it's a quiet morning coffee or a shared moment with friends.



An oversized east-facing window fills the space with natural light while framing a lively street view. A narrow bar counter crafted from solid maple runs along the window, creating an inviting spot to enjoy a coffee, people-watch, or for quiet reflection.



The design is anchored by the long service counter that spans the length of the space, featuring a sculptural, fluted wood front and a sleek white quartzite countertop.



The counter's curved end, guides customers toward the ordering area while also directing them around a corner where they can customize their drinks without disrupting the flow of others entering the café.



Framed by a geometric wood partition that maintains the space's open, airy feel, this cozy corner offers a spot for relaxation, with wood accents and minimalist decor.



The space is designed for versatility, with movable tables and track-mounted rice paper lanterns that can be rearranged to suit casual meetups or tasting events.



SUPPLIERS

EXTERIOR

Windows & Exterior Entry Doors
Bigfoot Doors

INTERIOR

Blinds
Legrand Solarfective

Millwork by YJ Interiors

Maple wood veneer Tambour slats
Grade A maple plywood cabinets
Solid maple window counter with
white powder coated steel legs

Countertops

Caesarstone -1141 Pure White

Flooring

StoneTile - Scottish Wheat, Vinyl
Kraft

Appliances

La Marzocco - Linea PB Espresso
Maker

Nuova Simonelli - Mythos Coffee
Grinder

Mahlkönig - EK43 Coffee Grinder

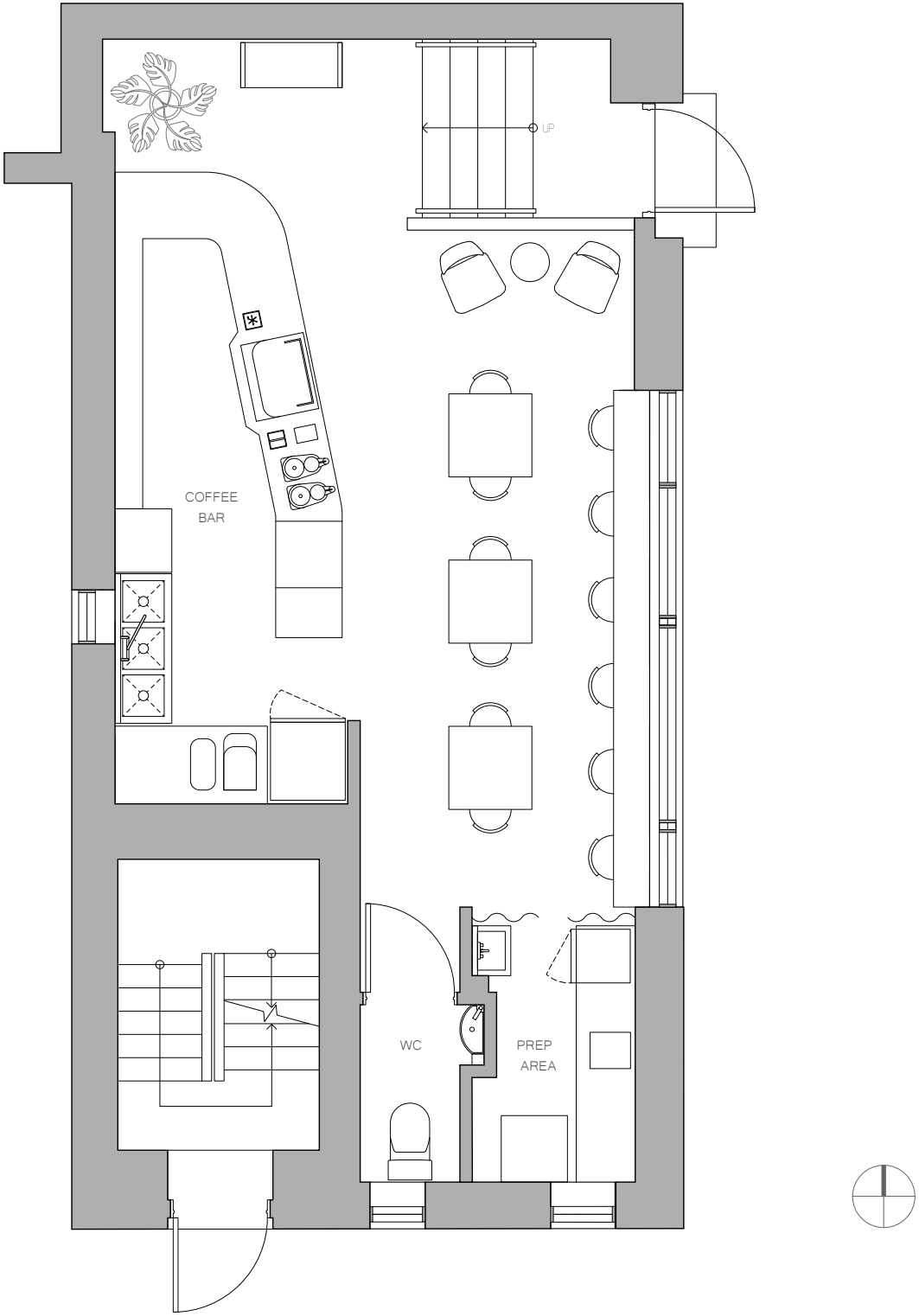
Fetco - XTS Coffee Brewer

Nella - Reach-in Refrigerator

Nella - Air Cooled Ice Maker

Turbofan - 3 Tray Oven

LION COFFEE



FLOOR PLAN

LION COFFEE



PROJECT CREDITS

Location: Toronto, Ontario

Size: 460 s.ft. | 43 s.m.

Architecture/Interior Design:

Dubbeldam Architecture + Design

Project Team: Heather Dubbeldam, Logan Carragher

Photography: Scott Norsworthy

Contractor: Messina Design & Build

For more information, please contact: Emily MacLennan

T. 416.913.6757 | E. press@dubbeldam.ca

www.dubbeldam.ca

Facebook, Instagram, Twitter: @DubbeldamArch

Photos from this press kit are available for download on

Dropbox: <https://tinyurl.com/Lion-Coffee>

Dubbeldam Architecture + Design is a multi-disciplinary design studio committed to creating thoughtful projects that embody sustainable approaches. With a diverse portfolio incorporating a wide variety of project types, their work ranges from homes, multi-unit residential projects, workspaces, hospitality, and mixed-use buildings to landscape design and architectural installations.

Along with over 100 design awards and wide recognition in national and international publications, Dubbeldam is the recipient of the Canada Council for the Arts Professional Prix de Rome and the 2024 Architectural Practice Award from the Royal Architectural Institute of Canada, two of the highest honours for architectural practices in Canada. With a commitment to design excellence and a focus on sustainability and wellness in architecture, Dubbeldam is recognized for creating innovative, unique, and environmentally responsible design solutions for live, work and play.

DUBBELDAM ARCHITECTURE + DESIGN

LION COFFEE



140

DUBBELDAM ARCHITECTURE + DESIGN