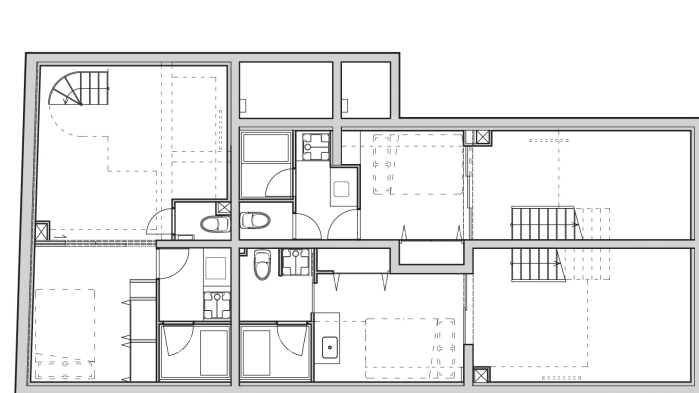
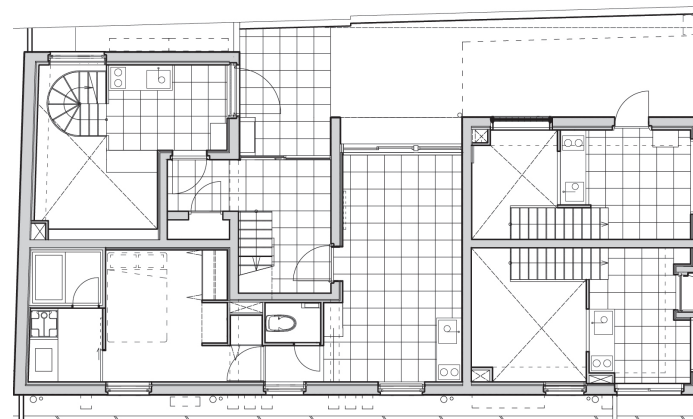




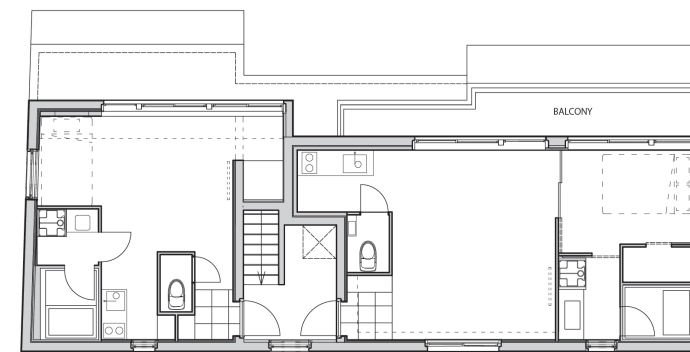
axonometric



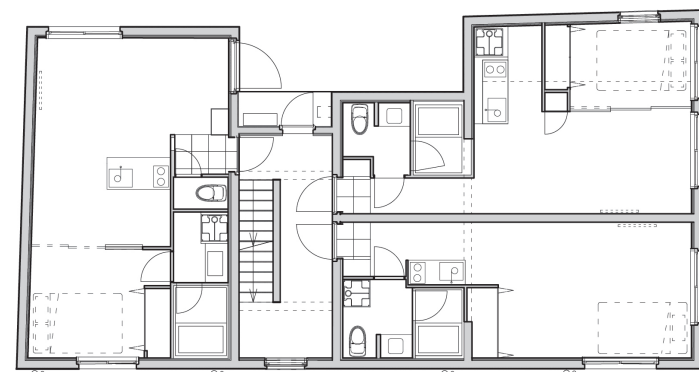
B1 floor



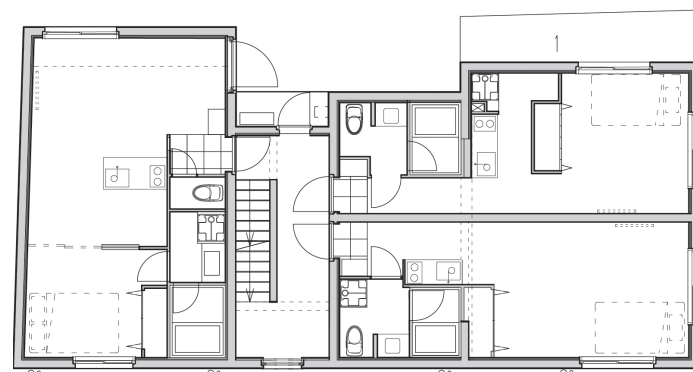
1st floor



4th floor



2nd floor



3rd floor

Escenario Meguro Hanabusayama

The site is surrounded by undulating terrain, with an elevated area featuring a historically significant residential neighborhood dating back to the Edo period. The building is a residential complex consisting of 12 units, incorporating a design inspired by the surrounding topography, with a motif based on geological strata. The façade features elongated, sloped depressions that represent layers of rock. The approach floor is adorned with long, stone patterns and ground-cover plants that evoke the concept of geological layers, and a similar elongated sloped pattern is applied to the walls. The concrete cast-in-place façade, resembling a cliff face, blends seamlessly with the surrounding environment, actively transforming the topographical features into the design. The 1700mm big windows in each room are designed with two faces to promote natural ventilation and lighting, minimizing the use of air conditioning and artificial lighting for energy efficiency. These openings provide views of the lush greenery on the elevated land, incorporating the classical Japanese garden technique of „shakkei“ (borrowed scenery). The interior is designed to create a tranquil space, highlighting the raw texture of the concrete, with a unified color scheme in greige tones. The finished concrete surfaces reflect both indoor and outdoor light, offering a comfortable and open living environment.



north elevation

Project Name: Escenario Meguro Hanabusayama
 Architect: Ryuichi Sasaki Architecture
 Photography: Takumi Ota Photography, Ryuichi Sasaki
 Site Area: 172,45 m²
 Total Floor Area: 496,82 m²
 Address: 3-10-27 Kamiōsaki Shinagawa-ku, Tokyo, Japan
 Completion: 2023

Awards/Prizes:
 The Plan Award 2023, Finalist
 Architecture Master Prize 2023, Honorable Mention



east elevation