



INSPIRA SP



Photo ©Maira Acayaba

The Inspira SP building, located in the Paulista Avenue region, emerges as a contemporary response to a consolidated urban context marked by the cultural and corporate intensity of São Paulo.

STRUCTURE AS PRINCIPLE

The tower is designed based on a peripheral structural grid in concrete, which is the project's primary feature. This permanent, stable, and powerful structure addresses the city as the first architectural order, affirming its presence in the urban landscape.

FREE AND REPROGRAMMABLE SPACES

By moving the load-bearing elements to the periphery, the structural grid frees up the internal spaces, allowing each floor to be occupied in a free, flexible, and reprogrammable manner. This condition ensures longevity of use and adaptability for different programs over time.

VEGETATION INFRASTRUCTURE

More than just a building, Inspira becomes a green infrastructure. A continuous system of planters, in-



grated into the concrete structure, allows vegetation to colonize and contradict the authoritarian geometry of the building.

Between the neutral and the artificial, greenery spreads, recomposes the native biome, and gives the tower a mutable and dynamic dimension. The building thus becomes an active support for a changing landscape, introducing new layers of use, perception, and enjoyment.

IN RELATION TO THE CITY

The building establishes a delicate relationship with the ground and the sky, understood as the diluted extremities of its construction system.

On the ground floor, the tower opens up to the city through a public grandstand and a lush garden, dissolving the boundary between building and urban space.

At the top, the structural grid folds horizontally, completing the architectural gesture and serving the building perfectly. On this elevated plane, a small forest connects the architecture to the horizon, transforming the roof into a continuous expanse of vegetation. Thus, Inspira presents itself as an elegant and slender building, but always in dialogue with the two dimensions that anchor it: collective life on the ground and the open vastness of the sky.

Inspira SP

Location: São Paulo, Brasil

Date: 2021 - 2025

Client: Hemisfério Sul Investimentos
+ Toca 55 Incorporadora

Architecture: Triptyque

Area: 17.462 m²

Program : Offices + Mixed-use

Status: Built

Team: Guillaume Sibaud, Olivier Raffaëlli, Gustavo Ziviani, Gustavo Panza, Luca Moreira, Rodrigo Gonzaga, Caio Dias de Sá, Gustavo Cherubini, Bruna Alcine, Bárbara Petri, Pedro Freire, Diego Santana Costa, Hassan Zoghbi de Palma, Julie Nolasco Barroca, Daniel Kenzo e Enzo Nercolini

Landscape design: Sérgio Santana

Visual Identity: Nitsche
Arquitetos

Photos: Maíra Acayaba



Photo ©Maira Acayaba



Photo ©Maira Acayaba



Photo ©Maira Acayaba



Photo ©Maira Acayaba



Photo ©Maira Acayaba



Photo ©Maira Acayaba



Photo ©Maira Acayaba



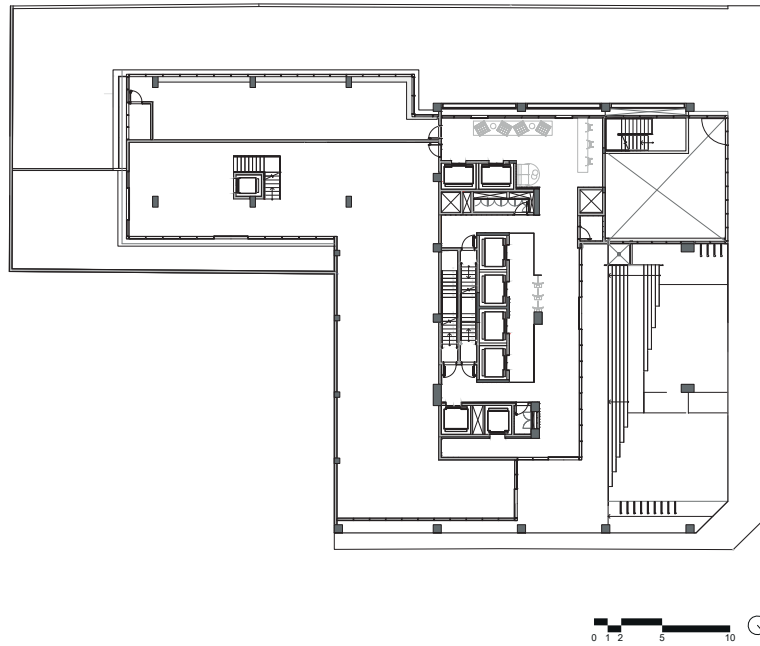
Photo ©Maira Acayaba



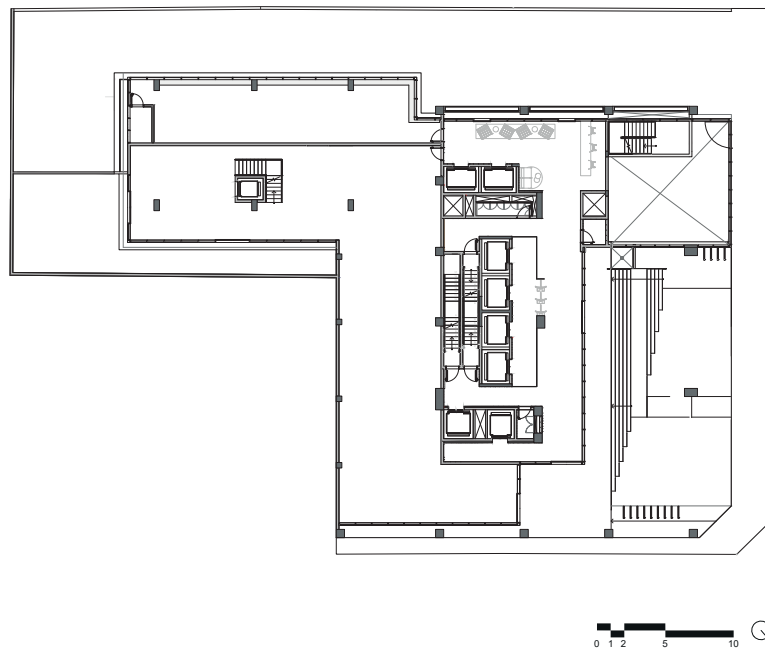
Photo ©Maira Acayaba



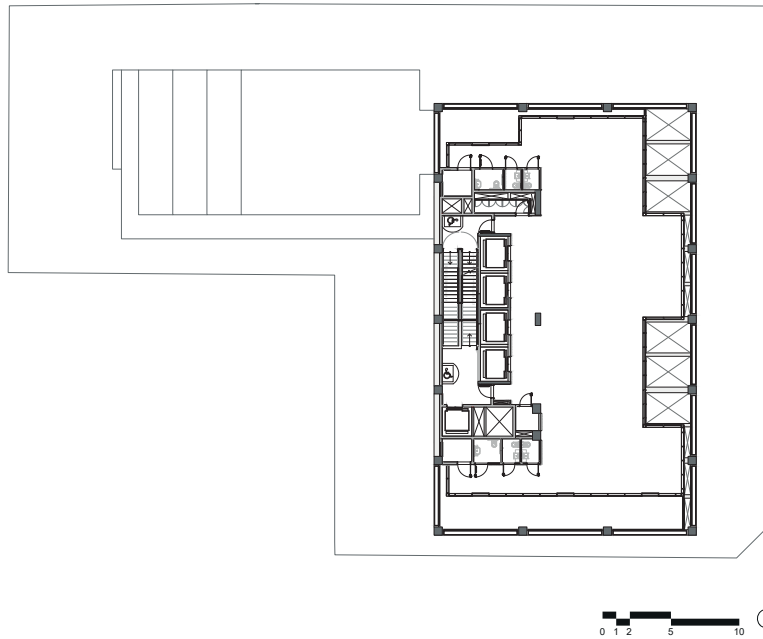
Foto ©Maira Acayaba



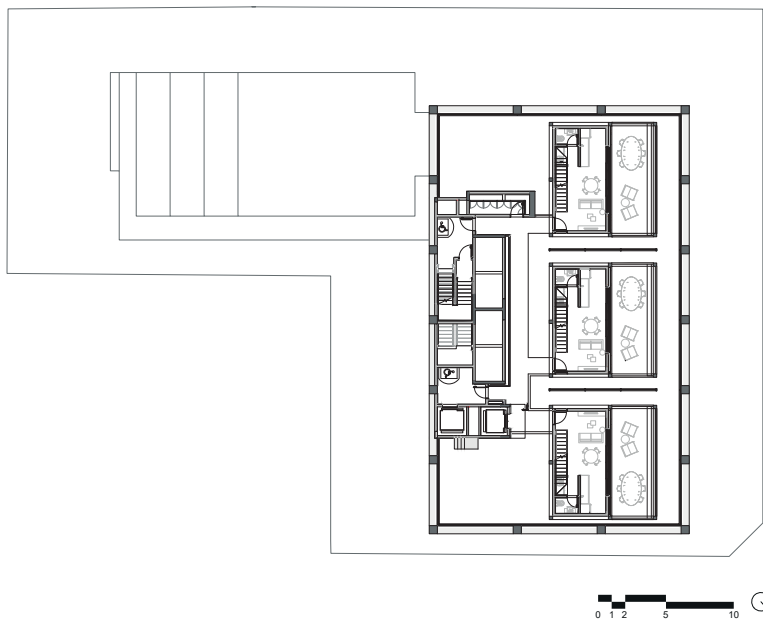
Ground floor



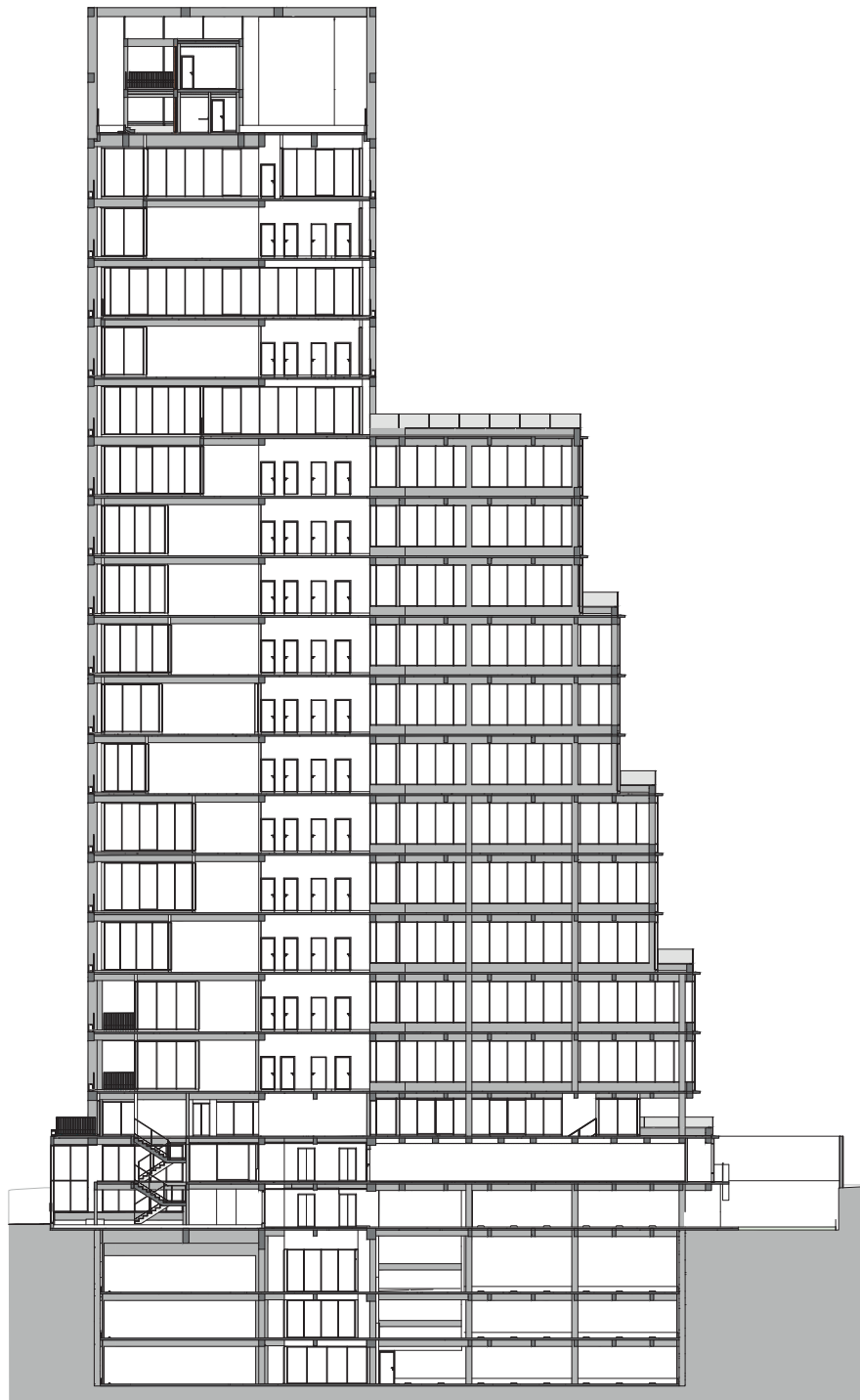
13th Floor



17th floor



18th floor



0 1 2 5 10

AA Section



0 1 2 5 10

BB Section



The Agency

Triptyque is a French-Brazilian architecture and urbanism agency known for its naturalist and rationalist approach. It is led by Guillaume Sibaud and Olivier Raffaëlli, founding partners, trained at the Paris La Seine School of Architecture and the Paris Institute of Urbanism. Driven by the same interest in contemporary metropolises and the desire to confront other realities, they founded Triptyque agency in São Paulo in 2000 and in Paris in 2008. Triptyque has been developing, in Latin America and Europe, public and private architecture, urbanism and interior projects in various fields such as residential, corporate, education, hospitality, healthcare and research.

The agency also took part in several exhibitions and biennials. Models of some of their designs have been included in museum collections, such the Center Pompidou in Paris and the Guggenheim Museum in New York. Triptyque has received numerous international awards and their work has been published in many countries.

Contact:
com@triptyque.com