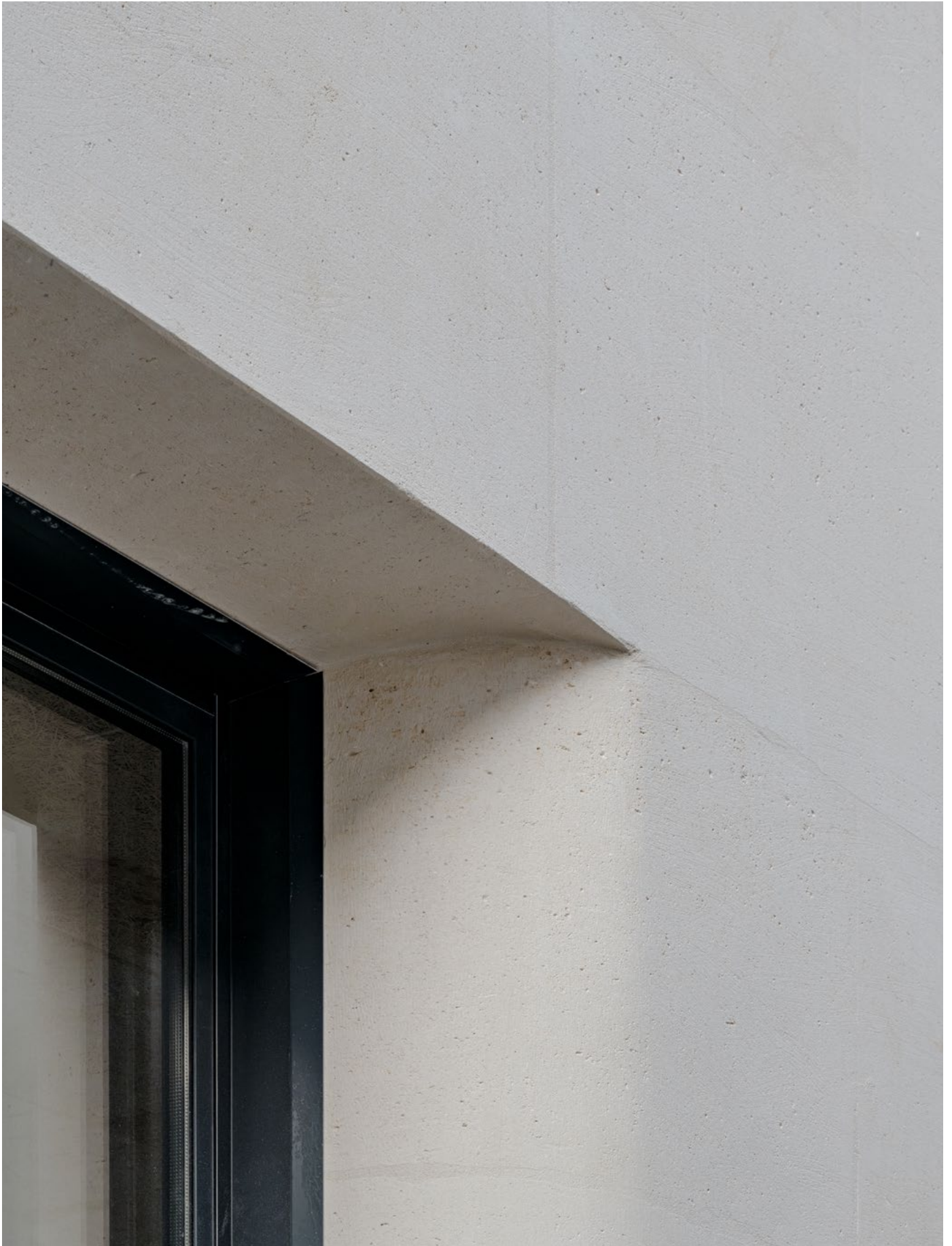




Paris Rue Bouret 2026

Press Release

34 social housing units and 1 nursery



Located in Paris's 19th arrondissement, the project has 34 social housing units and a nursery on the ground floor. The project adopts a construction design that combines a wooden structure, stone street facades, and a wooden frame envelope on the courtyard side. Its stepped volume limits shadows and promotes natural light.

The project embodies PietriArchitectes' approach to architecture, which is sensitive to urban issues and usability. The firm is committed to a construction method that focuses on a building's ability to fit sustainably, both technically and aesthetically, into the contemporary city.

An urban setting

Rue Bouret is characterized by a heterogeneous urban composition where buildings from the 1970s, townhouses, and constructions from various periods coexist.

In this typically Parisian contrasting landscape, PietriArchitectes has adopted an integration approach, aiming to weave architectural continuity between the two neighboring buildings while integrating them with restraint into the existing fabric.

The first four levels of the building align with the existing built frontage, ensuring a clear reading of the street profile. From the fifth floor upwards, the façade gradually recedes, adopting a pyramidal silhouette reminiscent of a ziggurat and Henri Sauvage's stepped buildings. This formal choice responds to a desire to bring more light and natural ventilation to the apartments while limiting the shadows cast on the surrounding buildings. This architectural style offers generous outdoor spaces while affirming the building's role as a transitional element, mediating between its two neighbors and contributing to a harmonious urban integration.

Responsible materiality

The entire vertical structure of the building is made of wood. On the street side, the facades are designed in load-bearing stone, giving the building a timeless, durable, and elegant architectural expression that resonates with traditional Parisian architecture.

In the courtyard, the facades use a timber frame wall system (MOB), allowing the elements to be

prefabricated in the workshop and installed more quickly, cleanly and quietly in a dense urban environment. The use of concrete is limited to elements necessary for stability and bracing, reducing the use of high-carbon materials. This combination of wood, solid stone, and concrete is a balanced assembly, designed to achieve a high level of thermal performance while remaining in line with a logic of constructive sobriety.

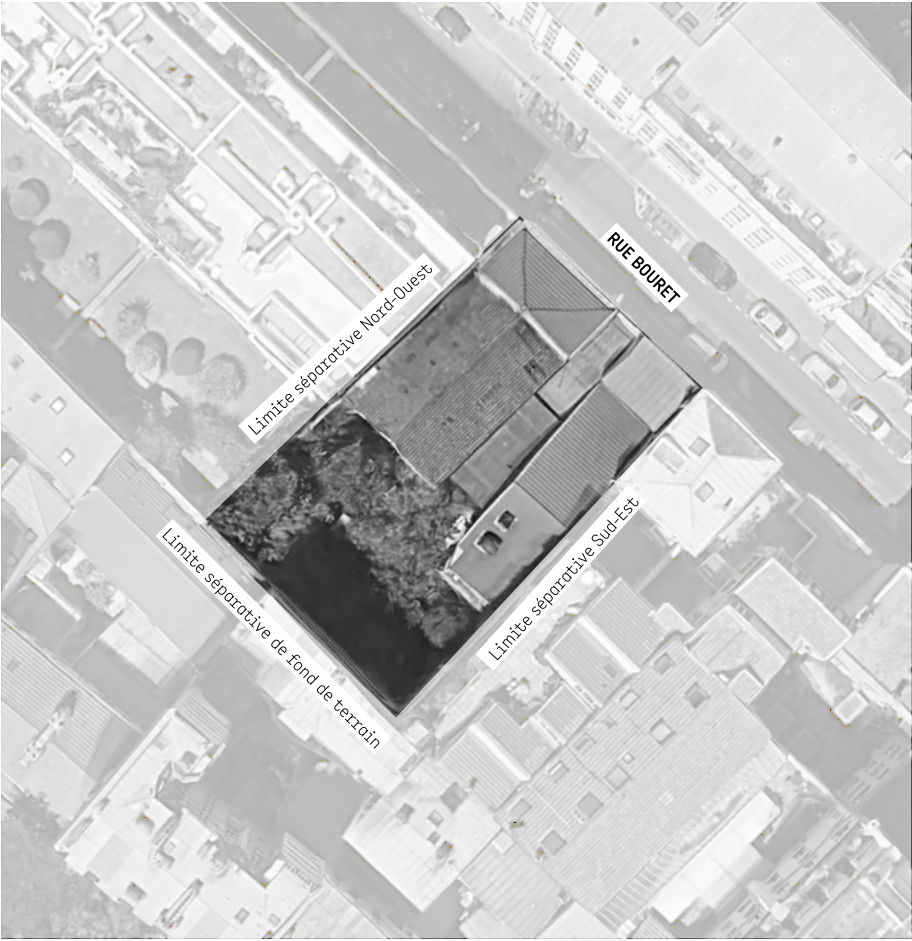
The project complies with the City of Paris' Climate Plan and achieves RT 2012 -20% performance, confirming the desire to build a sustainable, high-performance building that is adapted to contemporary energy objectives.

Quality of life and use

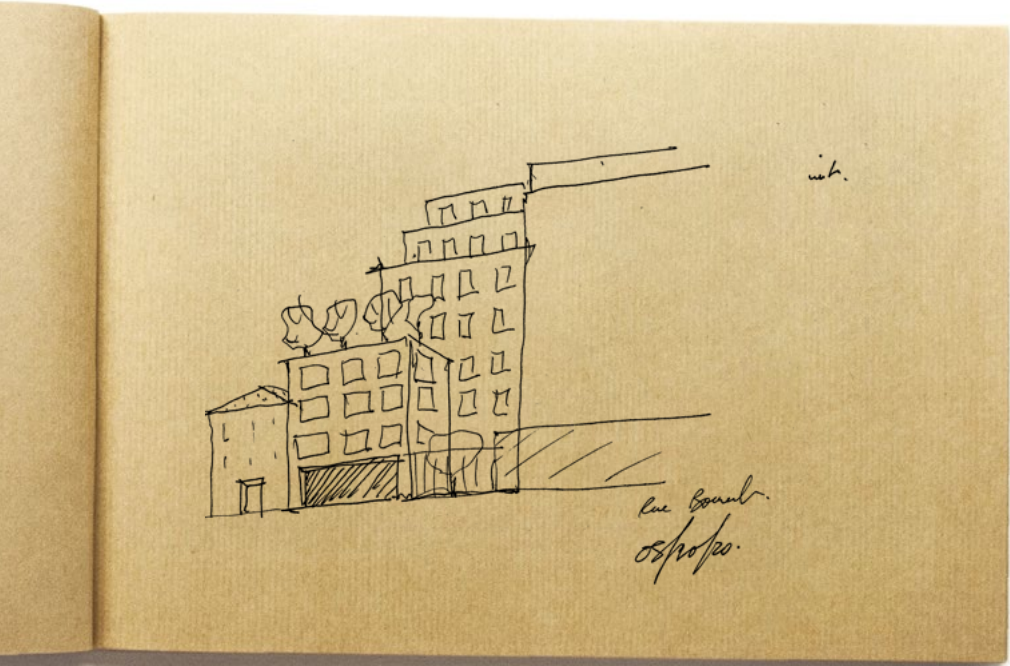
The construction of 34 social housing units and a nursery on the ground floor at 27 rue Bouret is part of a clear commitment to increase the supply of affordable housing while developing local services in the heart of the neighborhood. This mixed-use program aims to meet the needs of residents by offering both quality housing and essential local service.

Beyond its architectural design and constructive approach, the project is designed to offer a healthy, comfortable, and generous living environment. The stepped design provides unobstructed views, maximizes sunlight in the apartments, and improves natural ventilation. The outdoor spaces, integrated into the very shape of the building, are more like extensions of the living space than simple balconies.

A polluted, abandoned, degraded, squatted site



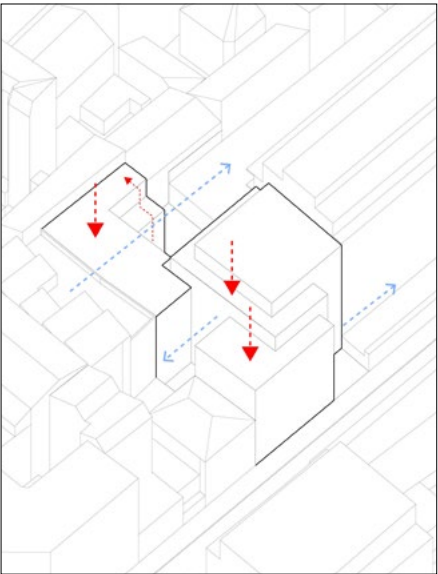
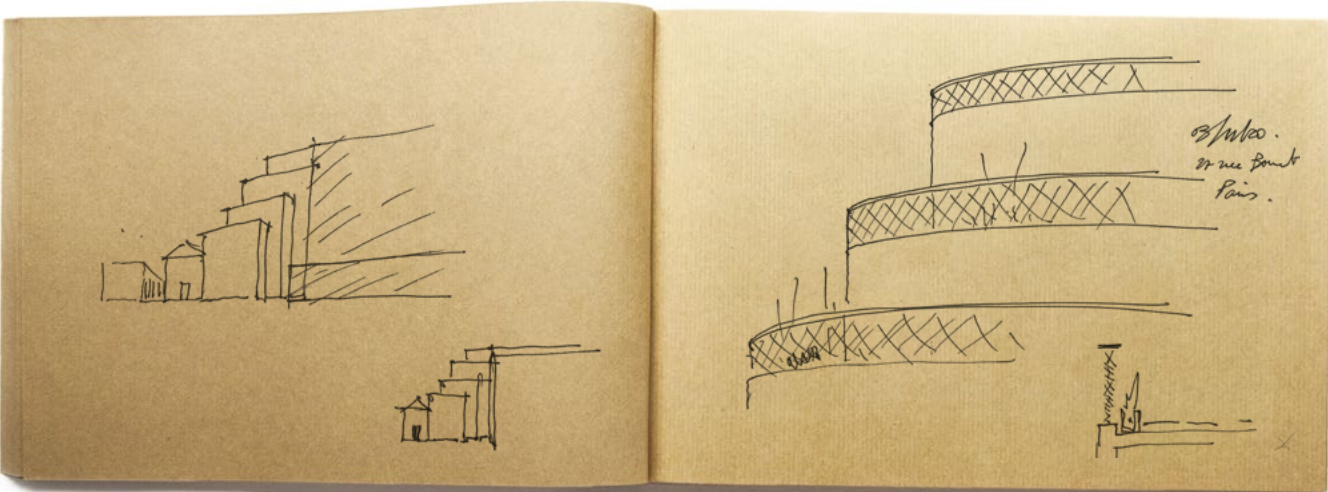
Urban integration



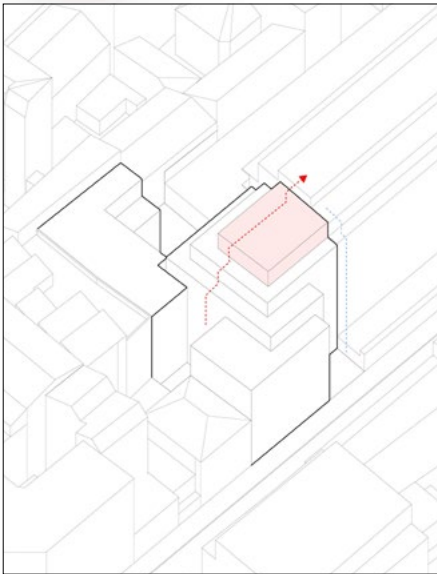
The facade is composed of 48% stone and 52% wooden framework.



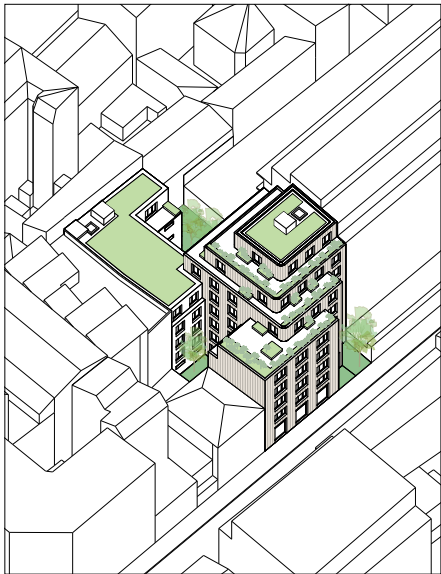
Urban continuity and greening.



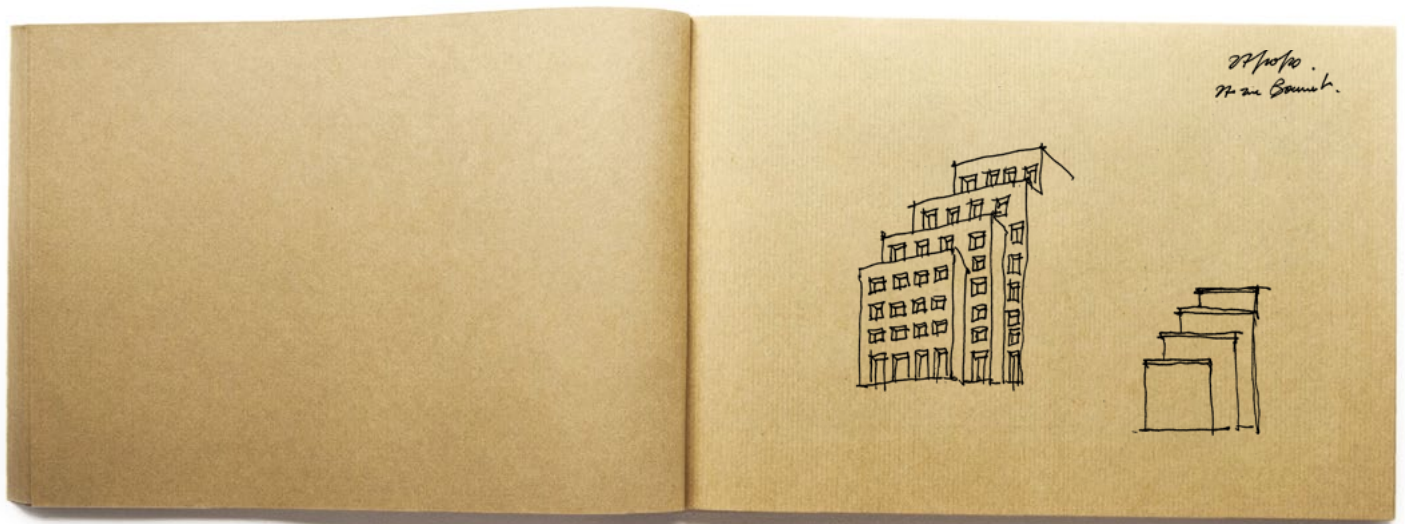
Rue Bouret Paris



34 social housing units and 1 nursery







Rue Bouret Paris

34 social housing units and 1 nursery

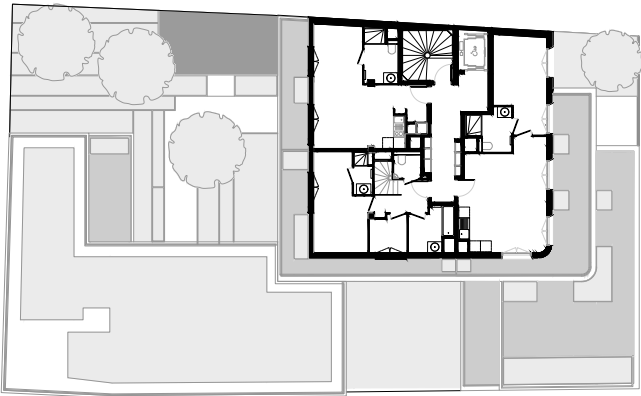




Rue Bouret Paris

34 social housing units and 1 nursery

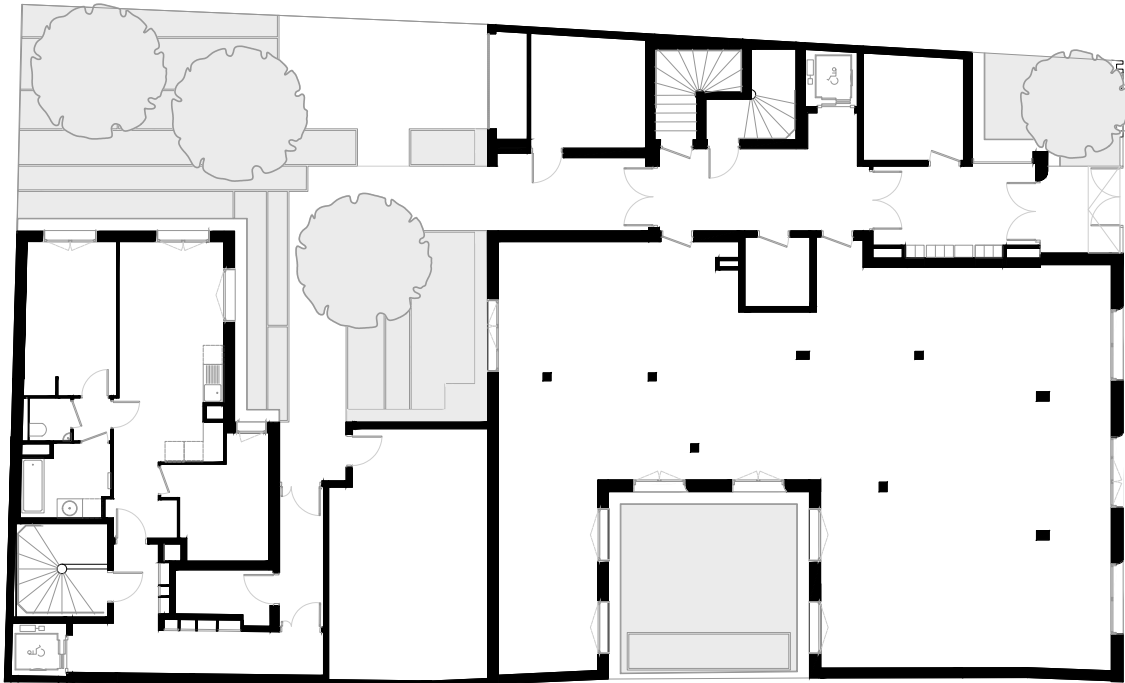
R+6



R+3



 RDC



RUE BOURET



Rue Bouret Paris

34 social housing units and 1 nursery

Jean-Baptiste Pietri, an architect who graduated from the Paris-Belleville School of Architecture, founded his firm PietriArchitectes in Paris in 2001. He has two partners: Jérémy Louette and Sarah Leroux. Based in Paris's 8th arrondissement, PietriArchitectes has around 20 employees.

He has an architectural approach that is both precise and poetic, built and developed around a philosophy: romantic rationalism. This concept combines a rigorous and optimized construction design with a rather expressive interpretation of the site. Far from rigid formalism, this approach seeks to create spaces that are both rigorous and poetic, rooted in their era while cultivating a certain timelessness. The architect must inspire dreams, but his works must be demanding, like his high-rise buildings, which have been a recurring theme in the architect's work since his diploma project.

PietriArchitectes stands out for its ability to work on architectural projects of all sizes. The firm builds throughout France, which allows it to establish a unique identity and universe thanks to

its architectural vocabulary, whose style adapts to the context in which it is used while deploying its own distinctive style. From single-family homes to high-rise buildings, hotels, and HQE housing, each project reflects meticulous attention to its use. This cross-disciplinary approach allows the firm to assert a coherent architectural vocabulary while adapting its style to the specificities of each program.

Striking a perfect balance between North and South, Jean-Baptiste Pietri and his collaborators stand out for their fluid lines, rounded shapes, and subtle materials, always seeking a balance between innovation and integration. Far from any brutality, his architecture cultivates a genuine urban politeness, seeking to engage with its environment without sacrificing a sensitive and expressive dimension.




Technical sheet

Project: 34 social housing units and 1 nursery
Client: Constructa
Architect: PietriArchitectes
Environmental norms: Paris Climate Plan / RT 2012 -20%
Area: 2.081 m²
Cost: €5 million
Completion: October 2025

Press contact

Elise Lorgeoux – accueil@jbpa.fr

Social media

 [pietriarchitectes](#)


 [Pietriarchitectes](#)

Image credits

Luc Boegly / Pierre-Romain Guedj / Loïc Madhani (photographs)
