

LONG LAKE COTTAGE



LONG LAKE COTTAGE



An off-grid cottage on a forested peninsula combines natural materials with elevated living spaces amid the trees.

Located on a secluded peninsula along a pristine, motorboat-free lake in the Ontario wilderness, this off-grid retreat offers a serene escape for an urban couple with a deep love of nature—who spent weekends camping on the land for a year before deciding where and what to build. Their goal: a place deeply connected to nature, elevated among the trees, and designed to accommodate accessible multigenerational living—a welcoming year-round refuge for gathering with family and friends.

Designed by Dubbeldam Architecture + Design, the two-level cottage maximizes views of the surrounding water and forest while maintaining a light touch on the environment it inhabits. Situated below a ridge of exposed bedrock, the lower half of the cottage is concealed from view on approach, while its upper floor is accessed via a bridge—an essential feature for a family member who uses a wheelchair. The main living spaces are located on this upper level to fulfill the clients' vision of a living room that “floats above the forest floor.” Expansive wrap-around windows and sliding doors open onto a generous upper deck with west and south-facing exposures, blurring the boundaries between indoors and outdoors and deepening the experience of nature for both owners and guests.

At the heart of the upper level is the open-plan living and dining area, where views of the lake are framed through the surrounding trees. A cast concrete hearth anchors the space, with generous seating arranged around it to encourage gathering. A built-in 17-foot-long window bench with integrated storage offers additional options for casual

LONG LAKE COTTAGE



3

lounging or enjoying the view. The kitchen features white oak millwork paired with engineered stone counters and backsplash, while a long island with a bar sink and ample seating subtly defines the space. Overhead, a ceiling of continuous western hemlock boards softens acoustics and adds warmth and texture to the interior.

On the lower level, five bedrooms each open directly to the forest through floor-to-ceiling windows and dedicated exterior entrances, offering guests privacy and a direct connection to the landscape. The primary bedroom faces west and opens fully to the outdoors, while the ensuite bathroom includes an outdoor shower—an homage to the family’s love of camping. A sixth bedroom and bathroom on the upper level that is fully accessible ensures that all family members can comfortably experience the cottage together.

“We designed the cottage with the living spaces upstairs and bedrooms below to preserve the natural contours of the site and ensure accessibility for the entire family,” says principal Heather Dubbeldam. “This slightly unorthodox arrangement emphasizes the retreat’s connection to nature, with communal spaces in the tree canopy and private areas within the forest floor.”

The two levels of the cottage are offset along their length to create a pair of generous outdoor spaces tucked into the building’s form. These decks extend the living areas outward into the natural surroundings, offering open-air lounging and dining opportunities. The main upper deck, adjacent to the living room, provides sweeping views of the forest and water on three sides. It features retractable screens for protection from bugs, and an outdoor wood-burning fireplace that echoes the hearth inside, extending enjoyment of the outdoors into the colder months. The lower deck, shaded beneath the projecting upper floor and nestled against a bedrock outcropping, stays cool in summer thanks to the cooling effect of the stone and cross-breezes off the lake.

Built entirely off-grid, the cottage is powered by a large solar array and constructed from sustainably harvested wood species, including wood milled nearby. Wood is used throughout as both structure and finish: greyed cedar and charcoal-stained spruce clad the exterior, visually receding into the forest, while inside, a lighter palette of brush-finished oak flooring and oil-rubbed hemlock creates a warm, relaxed atmosphere. The hemlock ceiling boards continue uninterrupted from interior to exterior, reinforcing a sense of material continuity and connection to the landscape. Fully winterized, Long Lake Cottage is more than a summer escape—it’s a year-round retreat for slowing down and living in sync with nature, immersed in the shifting seasons, light, and sounds of the forest and lake.

LONG LAKE COTTAGE



The upper-level living spaces float above the forest, with wrap-around windows and sliding doors opening to a sunlit deck that blurs the line between indoors and out.

LONG LAKE COTTAGE



A cast concrete hearth forms the focal point of the space, surrounded by ample seating designed to invite gathering and connection.

LONG LAKE COTTAGE



A 17-foot-long built-in bench beneath the window with integrated storage offers additional options for casual lounging, while also creating a cozy spot to take in the view.

LONG LAKE COTTAGE



The open plan living, dining room, and kitchen merge seamlessly, fostering connection within the space. Every circulation route terminates at a window or door, ensuring constant visual access to the surrounding landscape.

LONG LAKE COTTAGE



The kitchen is outfitted with white oak millwork, complemented by stone countertops and a matching backsplash. A long island with a bar sink and generous seating subtly delineates the space, while a continuous western hemlock ceiling overhead softens acoustics and brings warmth and texture to the interior.

LONG LAKE COTTAGE



LONG LAKE COTTAGE



Expansive wrap-around windows blur the boundaries between indoors and outdoors, enhancing the connection to nature. The warm wood tones of the interior seamlessly frame the view, drawing the surrounding forest into the space.

LONG LAKE COTTAGE



The entry foyer blends warm and cool tones, with large-format tiles that echo the nearby rock of the Canadian Shield, grounding the materials within their natural surroundings.

LONG LAKE COTTAGE



A cozy retreat under the stairs offers a playful hideaway for kids, with soft seating, natural light, and views of the forest.

LONG LAKE COTTAGE



13

On the lower level, five bedrooms and two bathrooms line the hallway, which terminates in a view of the lake. Brushed oak floorboards and hemlock wall cladding are brought to life by the generous natural light.

LONG LAKE COTTAGE



14

The west-facing principal bedroom opens fully to the outdoors, offering an immersive connection to the landscape and an uninterrupted view of the setting sun filtering through the trees—an invitation to end each day bathed in golden light.

LONG LAKE COTTAGE



15

The ensuite bathroom opens directly to the exterior, where an outdoor shower offers a nod to the family's love of camping and the rituals of life at the lake.

LONG LAKE COTTAGE



The lower-level bedrooms open to the forest through floor-to-ceiling windows and dedicated exterior entrances, offering guests a direct connection to the landscape.

LONG LAKE COTTAGE



17

The two levels of the cottage are offset to create two spacious outdoor decks, integrated into the building's design. The lower deck, shaded beneath the projecting upper floor and nestled against a bedrock outcropping, stays cool in summer thanks to the cooling effect of the stone and cross-breezes off the lake.

LONG LAKE COTTAGE



18

On the lower deck, a pair of teak swings create an intimate conversation area nestled against the rock face—offering a peaceful and cool spot for relaxation.

LONG LAKE COTTAGE



Situated below a ridge of exposed bedrock, the lower half of the cottage is concealed from view on approach, while its upper floor is accessed via a bridge—an essential feature for a family member who uses a wheelchair.

LONG LAKE COTTAGE



20

The upper deck, adjacent to the living room, provides sweeping views of the forest and water on three sides. It features retractable screens for protection from bugs, and an outdoor wood-burning fireplace that echoes the hearth inside, extending enjoyment of the outdoors into the colder months.

LONG LAKE COTTAGE



21

A view from the forest reveals the cottage's striking transparency—blurring boundaries between inside and out—while the upper deck hovers above, offering a sheltered outdoor living space immersed in the treetops.

LONG LAKE COTTAGE



22

Framed by the surrounding landscape, the cottage's exterior wood siding blends into the forest at night, while the warm western hemlock interior casts a soft glow, creating a welcoming contrast to the darkened surroundings.

LONG LAKE COTTAGE



23

As seen from the north over the septic field, the rear facade presents a more closed expression, while the slender bridge appears to float—carrying visitors from the parking area directly into the cottage’s elevated living level.

LONG LAKE COTTAGE



LONG LAKE COTTAGE



25

An aerial perspective reveals the cottage perched on a forested peninsula, surrounded by water on three sides and powered by a large solar array—underscoring its off grid autonomy.

LONG LAKE COTTAGE



LONG LAKE COTTAGE

SUPPLIERS

Exterior

Wood Siding: Maibec, URBAHN in Coastal Charcoal
Exterior Fascia: Gentek, Iron Ore
Exterior Soffit + Ceiling: Western hemlock T&G boards
Wood Decking: 6" wide knotty cedar boards
Solar Panels: SOLARK, 16 x 390W LG Bifacial Modules

Windows & Exterior Doors

Windows & Sliding Doors: : Inline Fiberglass
Shades: Lutron Shading Systems
Exterior Entry Door: Bauhaus Doors

Finishes

Flooring: Bauwerk Parkett, white oak (Relative Space)
Wall & Ceiling Finish: Western hemlock T&G boards
Fireplace: Anthony Concrete, panelized concrete cladding

Tile & Counters

Entry: Stone Project - Grey cross-cut, natural finish
Accessible Bathroom: Master Plan Cinder
Bathroom & Steam Room: Nordic Stone, Islanda
Kitchen Countertop, Backsplash, and Island:
Caesarstone
Bathroom Countertops: Caesarstone, Statuario Maximus

Plumbing Fixtures

Blanco Alta, Rohl, Franke, Kohler, Rubinet, Riobel

Millwork

Harvest House Craftsmen

Appliances & Equipment

Fridge, Dishwasher, Cooktop & Convection Oven:
Fisher & Paykel
Range Hood: Falmec Integrated Hood
Wine Fridge: Marvel Undercounter Wine Fridge
Living Room Fireplace: Valcourt, Antoinette
Muskoka Room Fireplace: Heatilator, Castlewood
Muskoka Room Bug Screens: Lutron

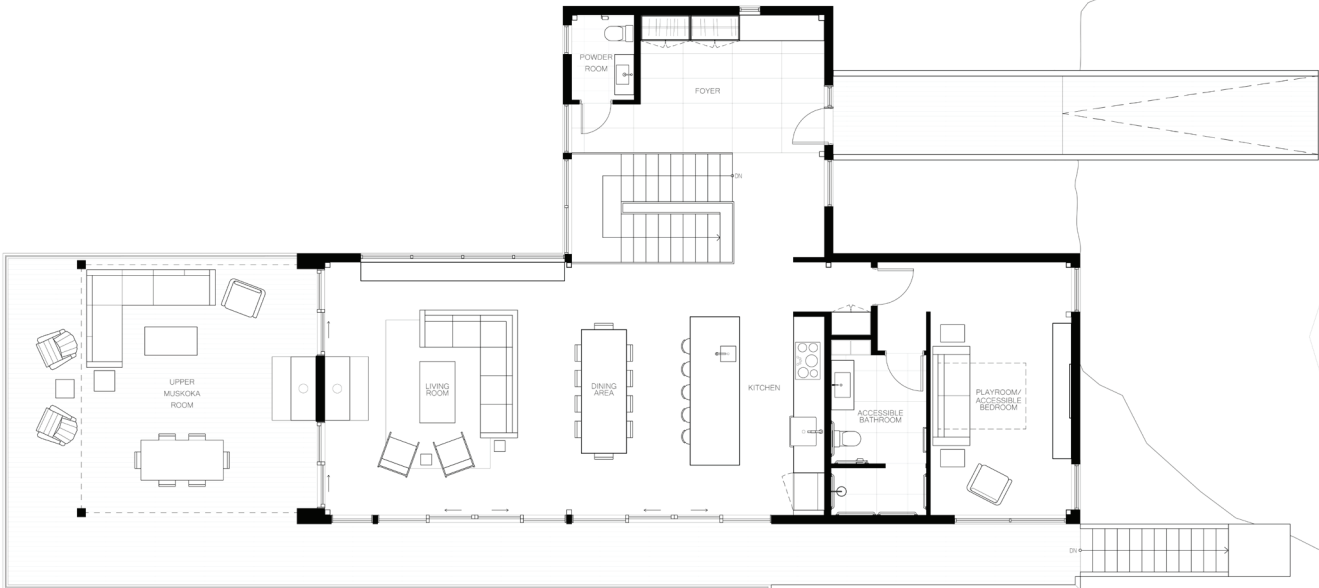
Furnishings

Dining Table: Son of a Woodcutter - custom table
Dining Chairs: Skovby - 92 Dining Chair
Stools: Muuto - Visu Stool, Black
Sofa: EQ3 - Oskar Sectional
Lounge Chairs: Article - Vapor Lounge Chair
Side Table: E15 - Backenzahn Side Table
Rug: Elite - Sundar 2 Wool Rug, Grey
Nightstands: BluDot - Rule Nightstand, Walnut
Principal Bedroom Bed: Article - Tessu Bed, Grey Glaze
Nightstands: EQ3 - Marcel Open Shelf Floating
Nightstand, Walnut
Guest Room Bed: EQ3 - Marcel Drawer Storage Bed, Walnut
Coffee Table: Article - Latta Slate Grey Dining Table
Outdoor Sofa: West Elm - Playa 4-piece Sectional
Lounge Chair: West Elm - Slope Natural Lounge Chairs
Outdoor Rug: Artistic Weavers - Bijoux
Porch Swings: Country Casual Teak - Casita Swing

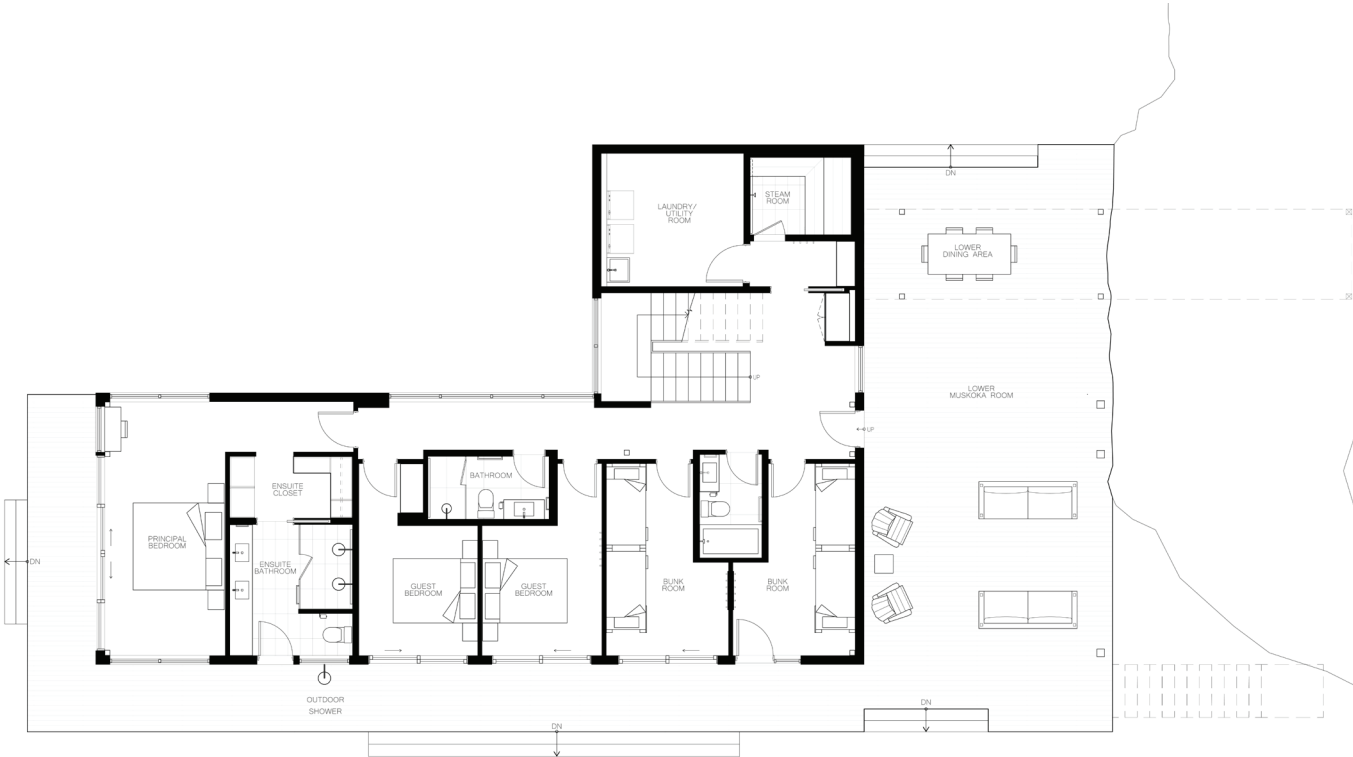
Light Fixtures

Recessed Potlight - Liteline, Luna Square LED
Dining Room Pendants: Eglo, Tortoreto Pendant Light
Ensuite Bathroom: Schoolhouse, Annette Wall Sconce
Bedroom: DWR, Modern Fan Company, Arbour Fan

LONG LAKE COTTAGE



Ground Floor



Lower Level

FLOOR PLANS



LONG LAKE COTTAGE



29

PROJECT CREDITS

Location: Muskoka, Canada

Size: 333 m² | 3,580 ft²

Architecture/Interior Design: Dubbeldam Architecture + Design

Project Team: Heather Dubbeldam, Andrew Snow, Krystal Kramer

Photography: Riley Snelling

Contractor: Thomas J Stead Construction

Consultants: Blackwell Structural Engineers

For more information, please contact: Kevin McIntosh

T. 416.913.6757 | E. press@dubbeldam.ca

www.dubbeldam.ca

Facebook, Instagram, Twitter: @DubbeldamArch

Photos from this press kit are available for download on

Dropbox: <https://tinyurl.com/Long-Lake-Cottage>

Dubbeldam Architecture + Design is a multi-disciplinary design studio committed to creating thoughtful projects that embody sustainable approaches. With a diverse portfolio incorporating a wide variety of project types, their work ranges from homes, multi-unit residential projects, workspaces, hospitality, and mixed-use buildings to landscape design and architectural installations.

Along with over 100 design awards and wide recognition in national and international publications, Dubbeldam is the recipient of the Canada Council for the Arts Professional Prix de Rome and the 2024 Architectural Practice Award from the Royal Architectural Institute of Canada, two of the highest honours for architectural practices in Canada. With a commitment to design excellence and a focus on sustainability and wellness in architecture, Dubbeldam is recognized for creating innovative, unique, and environmentally responsible design solutions for live, work and play.

DUBBELDAM ARCHITECTURE + DESIGN