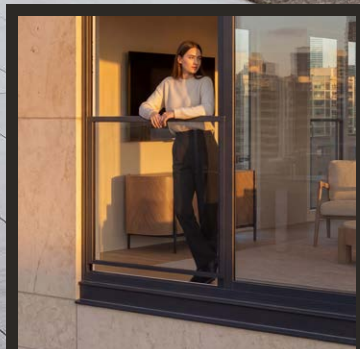


Recessed handle (option)

Achieves a 32" clear opening with a 6-ft door.



N

Vertika (option) **NEW**

Integrated railing system for multiresidential projects.

Simple and efficient, the Studio aluminum patio door exceeds industry standards for performance. Ideal for high-rise projects, this door is built to withstand the harsh weather and wind loads at the top. Essentially, Studio is a flexible aluminum patio door system, tailored for architectural applications with extensive customization options such as color, sill finishes, glass, hardware, and more.

Studio

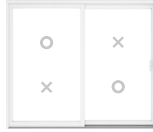
Elevated performance



Standard Sizes

✕ OPENING PANEL ○ FIXED PANEL (EXTERIOR VIEW)

5', 6', 8' & 10' WIDTH



59" × 79½"
58¾" × 94¼"
71" × 79½"
70¾" × 94¼"
95" × 79½"
94¾" × 94¼"
119½" × 119½"

7'6", 9' & 12' WIDTH



88⅞" × 79½"
88⅞" × 94¼"
106⅞" × 79½"
106⅞" × 94¼"
142⅞" × 79½"
142⅞" × 94¼"

10', 12' & 16' WIDTH



117½" × 79½"
117" × 94¼"
141½" × 79½"
141" × 94¼"
189½" × 79½"
189" × 94¼"

Custom sizes available tested up to 10 feet tall.

Specifications

Materials

All aluminum door utilizing *pour-and-debridge* dual thermal break technology and double-seal weatherstripping.

Standard aluminum jamb and head covers, aluminum sill cover and Moderno screen.

Frame depth 4⅞"

Glazing Options

Tempered 1" insulated glass units.

Laminated insulated glass units also available.

Double glazed — Low-E: 272

U-value: 0.37, SHGC 0.33

Double glazed — Low-E: 366

U-value: 0.36, SHGC 0.22

Double glazed — Low-E: 366 + i89

U-value: 0.31, SHGC 0.22

Triple glazed — Low-E: 272 / 272

U-value: 0.30, SHGC 0.27

272 equivalent available: CG 70

366 equivalent available: CG 62/27

Performance

Testing conducted in accordance with AAMA/WDMA/CSA 101/I.S.2/A440-17 and CSA A440S1-19

Performance Rating	Tested Size	Configuration	Reinforcement Option	Air	Water	Design Pressure
LC-PG40	94¾" × 94⅞"	OX / XO	Standard Interlocks	A3	510 Pa (10.6 psf)	±1920 Pa (±40 psf)
LC-PG50	94¾" × 94⅞"	OX / XO	Steel Reinforced Interlocks	A3	510 Pa (10.6 psf)	±2400 Pa (±50 psf)
LC-PG60	94¾" × 94⅞"	OX / XO	Aluminum Stiffener at Interlock / Reinforced Lock Stile	A3	510 Pa (10.6 psf)	±2880 Pa (±60 psf)
CW-PG60	94¾" × 94⅞"	OX / XO	Aluminum Stiffener at Interlock / Reinforced Lock Stile	Pass	510 Pa (10.6 psf)	±2880 Pa (±60 psf)
AW-PG40	122" × 95½"	OX / XO	Aluminum Stiffener at Interlock / Reinforced Lock Stile	Pass	480 Pa (10 psf)	±1920 Pa (±40 psf)

20-Year Limited Warranty See the detailed warranty on our website.



Elite Handle

White
Black



Contemporary / View Handle (Option)

White
Black
Satin Nickel

Colors

Sill painted with exterior color.



Commercial Brown (K70634)



Black (K90342)



Clear anodized (0.0004 class II)



Custom Color (Option)

Options

Pricing available on request.

- Sidelites and transoms
- Grilles
- Color tinted and reflective glass
- Recessed handle NEW
- Keylock
- Keyed alike
- Kick lock
- Double point locking system
- Security bar
- Multiple sill options for desired water performance
- Multiple reinforcement options for various structural performance needs ranging from LC-PG40 to AW-PG40
- Interior and exterior extension
- Nailing fin and Stucco flange (2 in 1)



N

Vertika ^{NEW}

The only patio door railing system designed as one

Vertika reimagines the way balconies are designed for residential towers. This guardrail system, fully integrated into the footprint of the Studio patio door, offers a modern, safe, and visually unobstructed alternative to traditional “Juliet” balconies.

As residential buildings continue to rise, expectations are evolving. Architects and contractors are looking for larger openings, cleaner façades and more efficient construction solutions. Studio with Vertika now offers a new approach.

Recognized for its structural performance, resistance to harsh weather conditions and configuration flexibility, Studio provides a reliable foundation for integrating Vertika into demanding projects.



Seamless, integrated design:

- ✓ Fully integrated within the sliding door footprint for a modern finish while preserving maximum floorspace.
- ✓ Minimal visual weight: Preserves clean sightlines and enhances architectural aesthetics without obstructing views.

Optimized costs & installation:

- ✓ Interior-only installation: Completed entirely from the inside of the building eliminates the need for cranes, lifts, or swing platforms.
- ✓ More than 30% cost advantage: Significantly lower installation and material overhead compared to traditional exterior methods, reducing overall project budget.

High-rise qualified performance:

- ✓ Engineered for safety: Designed to meet the most rigorous high-rise standards.
- ✓ Fully compliant: Meets the CSA A500 requirements and the 2020 National Building code of Canada (NBC 2020).

Applications

- Residential towers
- Multi-unit buildings
- Condominium projects
- High-density residential developments
- Buildings with curtain wall systems or large glazed openings

Specifications

- All-in-one system ready to install
- Aluminum profiles assembled using stainless steel fasteners
- Compatible with the Studio aluminum 2-Panel Patio Door in **5'**, **6'** and **8'** width
- Compatible with existing insect screens
- Color matched to the project's exterior envelope
- Also offer with BirdCare glazing solution for protecting birds in urban environments
- Compliant with CSA A500 standards and the National Building Code of Canada 2020 (NBCC 2020)

