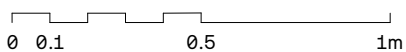
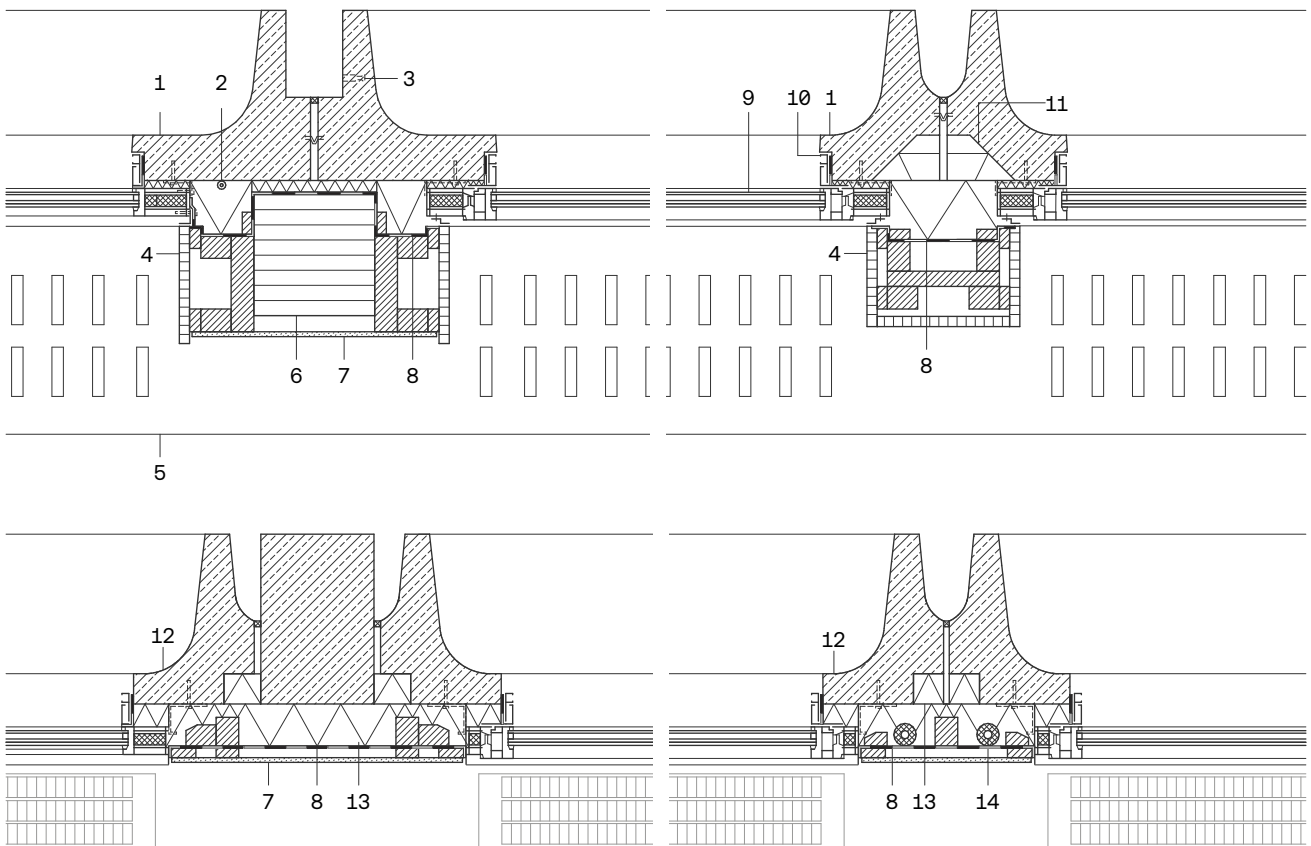


- 1 prefabricated exposed concrete element, sandblasted (new)
- 2 copper lightning conductor Ø 8mm
- 3 steel sleeve for scaffold anchor
- 4 window reveal cladding: oak veneer particle board
- 5 oak bench
- 6 320/320 mm glued laminated timber column
- 7 15 mm gypsum fibre board, painted finish
- 8 vapour barrier
- 9 insulation glazing:
8 mm toughened glass + 18 mm cavity + 2 x 6 mm laminated safety glass in anodised aluminium frame
- 10 80 mm slat blind head rail, aluminium
- 11 mineral wool thermal insulation
- 12 prefabricated concrete element, sandblasted (existing)
- 13 cellulose thermal insulation
- 14 heating system riser



Horizontal sections A + B