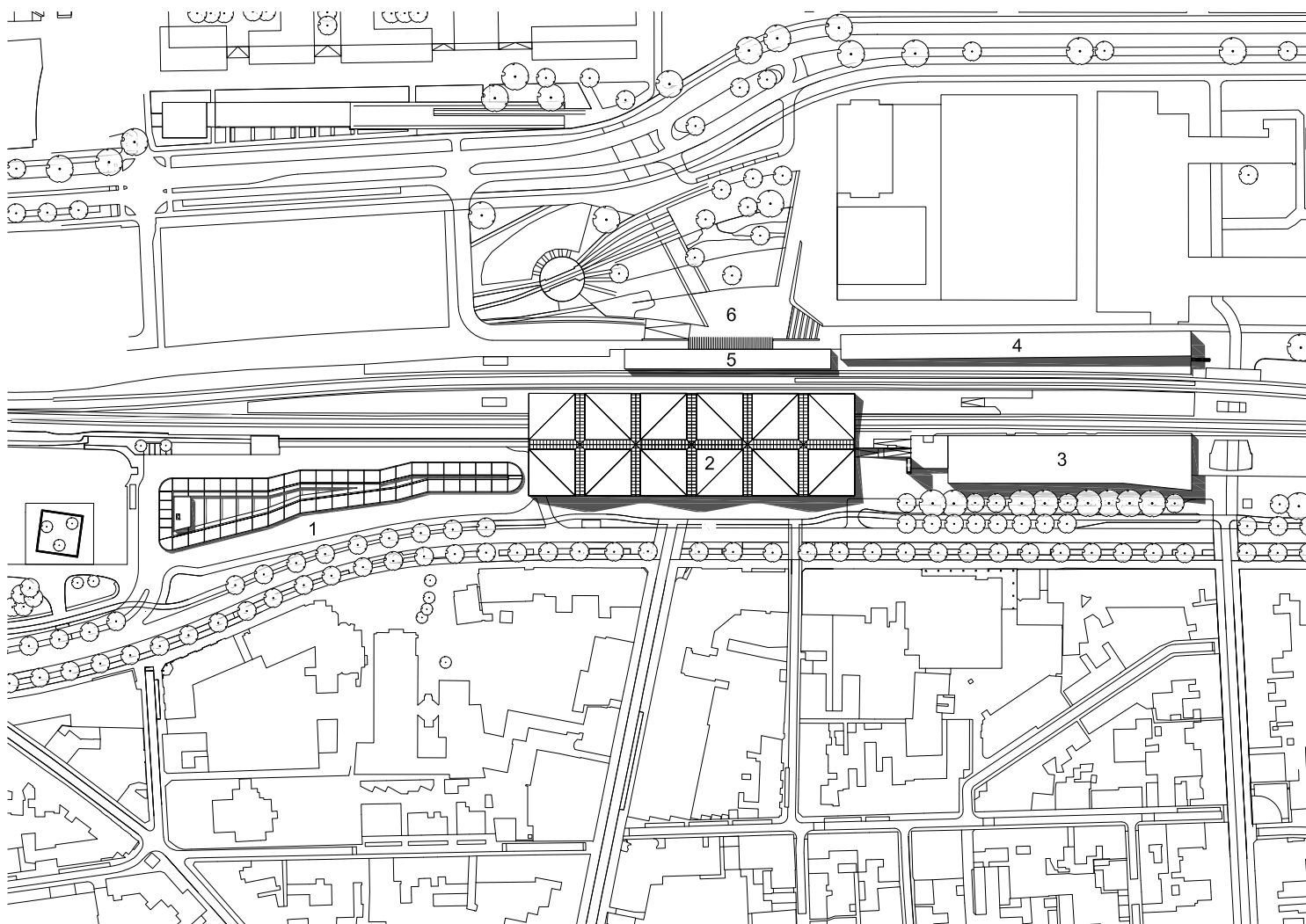
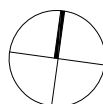


- 1 bus station with awning
- 2 train station building; nationally listed monument, original design by architect Van der Gaast; expanded with inter-district connection, transfer and new north entrance
- 3 bicycle parking south side
- 4 bicycle parking north side
- 5 platform 4 with new platform roof
- 6 north square
- 7 south square (centre side)

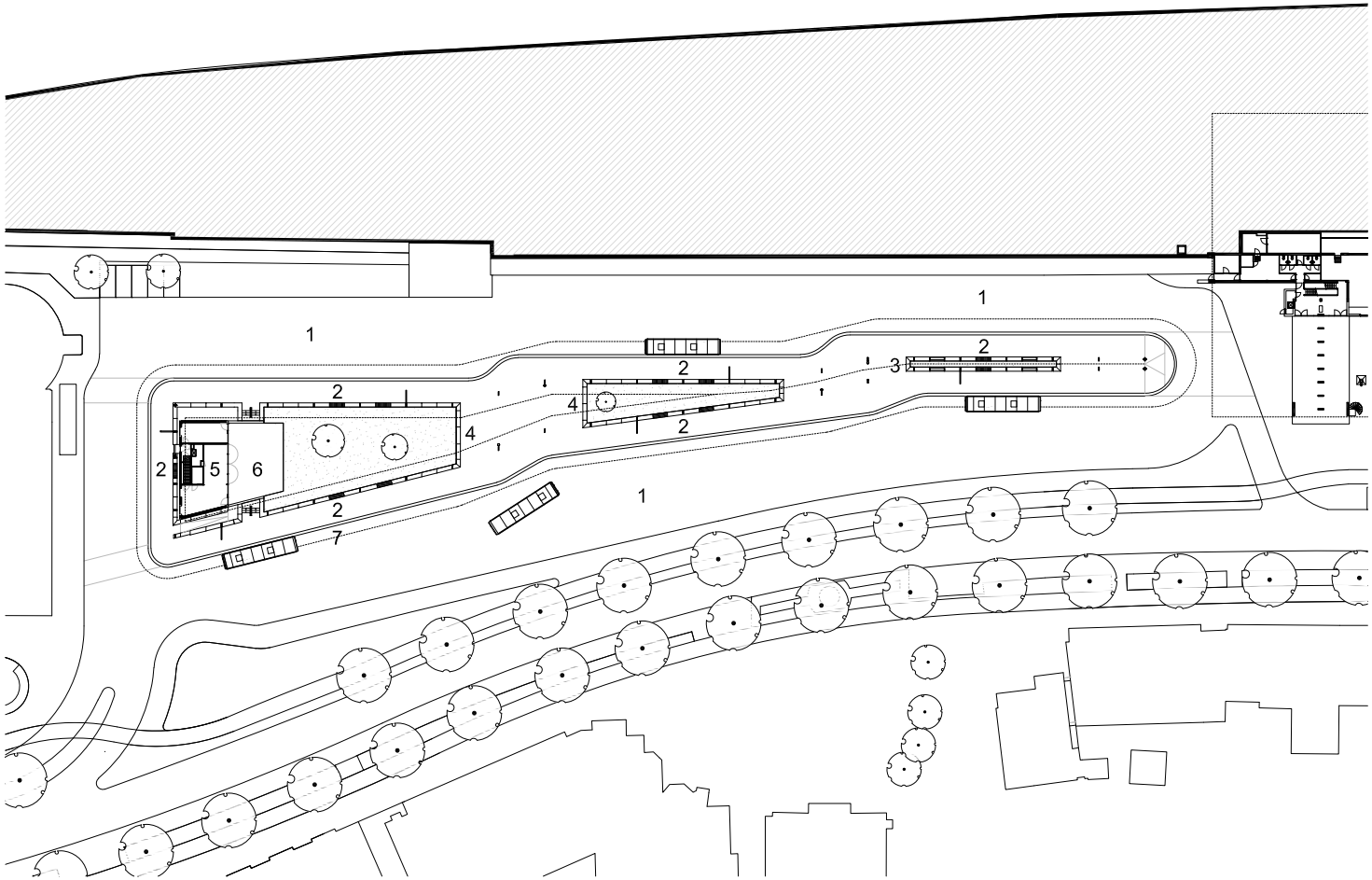


0m 50m 100m

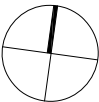


934 Bus station Tilburg  
floor plan  
1:1100

- 1 bus lane
- 2 platform
- 3 concrete seating edge with integrated display for static travel information
- 4 landscaped garden with seating edge around it
- 5 driver's building, also including public transport services and commercial room
- 6 terrace
- 7 awning

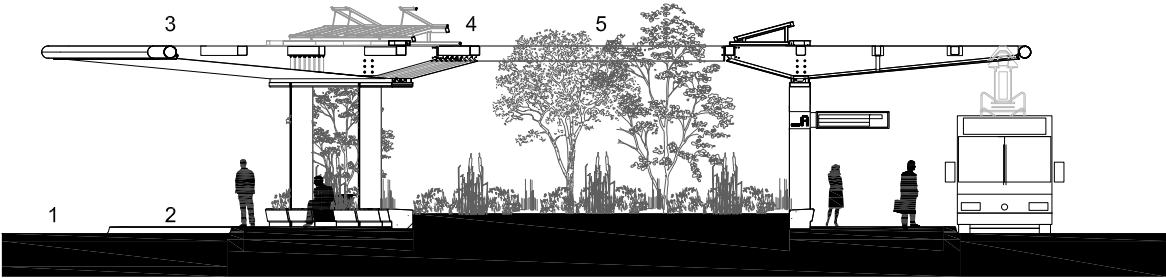


ground floor



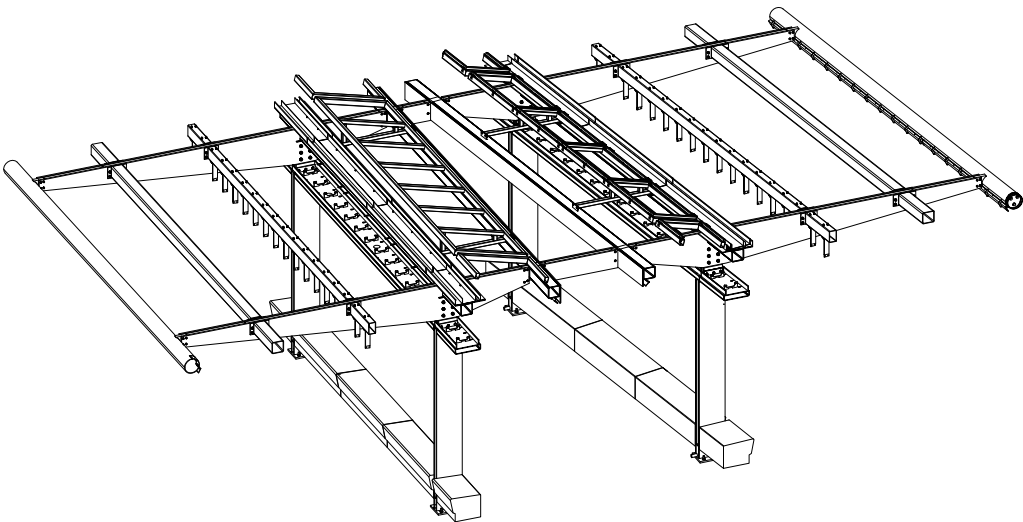
934 Bus station Tilburg  
awning construction

- 1 bus lane
- 2 platform
- 3 awning
- 4 solar panels
- 5 landscaped garden with seating edge around it



cross section awning

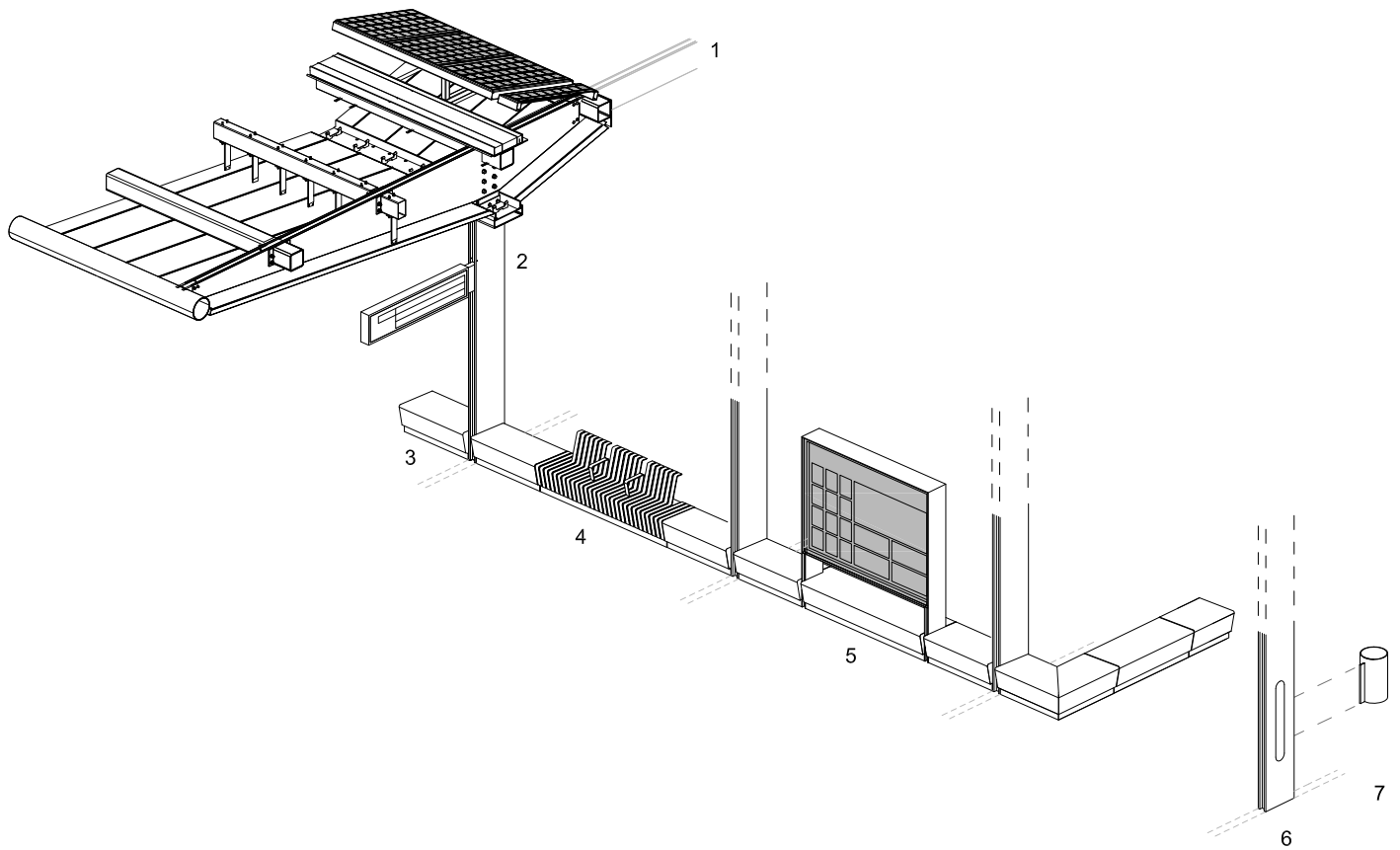
1:200

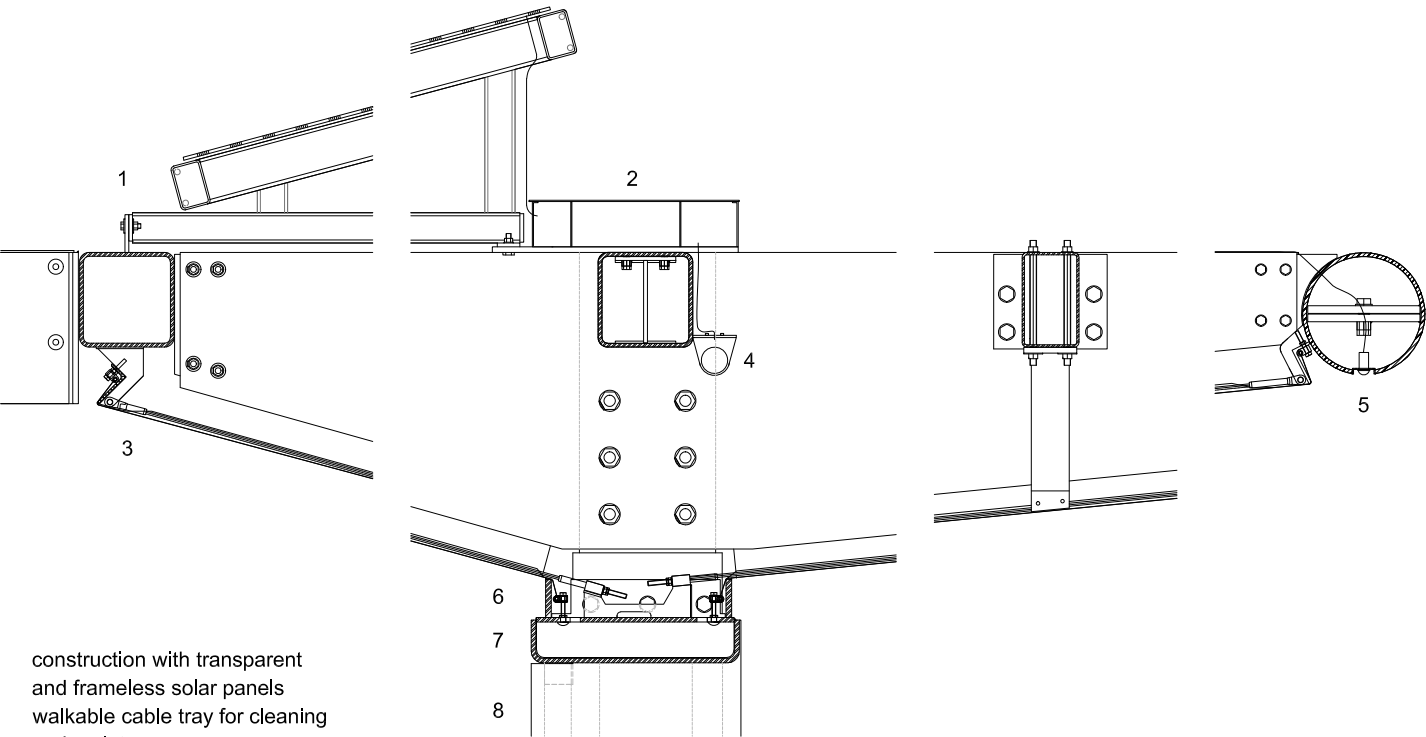


fragment steel construction

934 Bus station Tilburg  
construction components

- 1 awning with framework for solar panels
- 2 composite column with digital display travel information
- 3 concrete seating edge
- 4 strip steel bench with heating, integrated in concrete seating edge
- 5 display static travel information integrated in seating edge
- 6 composite column with integrated s.o.s.-panel and intercom
- 7 waste bin





- 1 construction with transparent and frameless solar panels
- 2 walkable cable tray for cleaning and maintenance
- 3 single-layered ETFE
- 4 lighting fixture for wide-angle LED
- 5 motion sensor integrated in tube profile
- 6 ETFE-clamping structure
- 7 load-bearing gutter construction
- 8 composite column with integrated rainwater drainage and electricity cabling
- 9 display digital travel information invisibly mounted to composite column
- 10 bench of bent strip steel with integrated heating
- 11 landscaped garden
- 12 prefab seating edge of black concrete
- 13 platform finishing of natural stone
- 14 horizontal section of composite column, finishing varies depending on particular connection (angled or perpendicular)

