

Press release, July 2014



Harrods' new escalators, a Cavalli concept store and the redevelopment of a former political hotspot all compete for World Interior of the Year 2014



INSIDE World Festival of Interiors (with Headline Partner Dulux), the leading global interior design awards programme, has today announced the nominees that will go head-to-head to be crowned **World Interior of the Year 2014**, in a ceremony at the Marina Bay Sands Hotel, Singapore in October. Comprising the most original and exciting interiors from the last 12 months, this year's awards consist of **60 nominations from 21 countries** across nine diverse categories.

This year's contest includes a wide range of different types of interiors, from schools to offices, airports to tents, all nominated for the premier design award. London-based **MAKE Architects** are nominated in the Retail category for their art deco redesign of the famous **Harrods escalator hall** and their delicate restoration of its 1920s staircase. In the same category **OpenAir Studio** have submitted their **Just Cavalli concept store** which sees walls, shelving and installations crafted from rusted metal, inspired by the brand identity.

In the year of the World Cup, the shortlist includes two Brazilian nominations. In the Bars and Restaurants category the redevelopment of the famous **Bar Riviera**, Sao Paulo has been nominated. Known as a left wing hotspot during the military regimes of the 1960s and 70s, it has now been turned into one of the area's premier clubs with distinctive glass brick walls and a prominent sculptural staircase. Also in Sao Paulo, the **Cultura Bookstore** provides a 21st century retail experience with a large central area encased by books, allowing customers to read, chat and even watch a lecture or performance.

A common theme of free-flow work environments, employee interaction and 'break-out zones' is seen across the office and education categories. In the **Architecture Factory in Cork**, Ireland, disused shipping containers have been converted into open studios for an attractive and cost effective method of workplace design; the new office for tech company Sahibinden.com sees work and play combine with an open-plan office, running track and basketball court; and **Haptic Architects** have converted a bunker that lies deep within the site of the new Arkwright offices into an executive lounge and private working area called '**the James Bond room**'.

Re-use and redesign proves to be key to the work of this year's submissions, as architects and designers develop innovative responses to a lack of space for new build projects. Adapting existing buildings seems to be a natural progression for the interior design profession. Redesign projects include the new and improved design

of the famous **Christopher's Restaurant** in Covent Garden, London; the transformation of the private residence of the great Japanese painter Seiho Takeuchi into a music and banquet hall; and the **Camper Showroom** in Shanghai which sees **Neri&Hu** design a two-storey home inside an old warehouse.

Other nominations include the redevelopment of the former **USSR Writers Union** that has been transformed into a new restaurant in Moscow and features a grand chandelier rumoured to be a gift from Stalin during the 1930s; a pink neon Willy Wonka-style patisserie designed by junior architects from **Elenberg Fraser's** trainee programme for the famous chef Adriano Zumbo; and the regional terminal for **Christchurch Airport** in New Zealand, with a structure derived from the form of the Southern Alps.

Shortlisted designers including **CRAB Studio, Woods Bagot, mk27, Clive Wilkinson Architects and Joyce Wang Studio** will be pitched against one another in front of a distinguished panel of judges in this unique awards competition. Winner of World Interior of the Year 2013 for his Carrer Avinyo apartment – **David Kohn** has joined the judging panel alongside the likes of **Joey Ho** and **Pernilla Ohrstedt**. **Nigel Coates**, associate director of the Festival, will act as compare for the super-jury.

David Kohn comments:

'It was a thrilling experience to be in Singapore for the festival and was of course even better to win. The festival offers a chance to network with designers, businesses and potential clients from around the world and forms a global community of design and architecture for the entire three days. It was great to be recognised by my peers and exciting to see our project published internationally.'

All nominees will compete in the form of live presentations and debates during the INSIDE World Festival of Interiors from 1-3 October 2014 at the Marina Bay Sands in Singapore.

Ends

Full list of all nominations, with images and descriptions can be found in the Notes to Editors.

Quotes:

Paul Finch, Programme Director of World Architectural Festival and INSIDE – World Festival of Interiors:

'Once again the submissions cover an excellent geographical range, with entries from most continents, reflecting the very different expectations of clients and design approaches around the world. We launched INSIDE in 2011 and this year looks like being the best event so far. We think the importance of interior design and architecture needs to be recognised alongside the more obvious public-facing projects. We see architecture and interior design as disciplines in their own right but both are part of the spectrum of design.'

Nigel Coates:

'It's fascinating to see submissions from all over the world and how they differ from continent to continent, it makes one reconsider what is good design. Winning projects must be of spatial interest, not just a dressing.'

Further quotes from all the judges are available on request.

Press, image and interview requests:

Caro Communications: 020 7713 9388; @carocomms; @Insidefestival

Jordan Lewis – Jordan@carocommunications.com

Rob Fiehn – rob@carocommunications.com

Notes to Editor:

INSIDE FESTIVAL ORGANISERS: i2i EVENTS GROUP

i2i Events Group delivers world-class exhibitions and large scale events in key sectors including architecture, interior design, home and gift, fashion, retail, healthcare, energy, environment, education, technology and media. Its portfolio of world-wide events includes World Retail Congress, RWM, Spring Fair, Naidex, BVE, Bett and Pure London. i2i Events Group prides itself on opening up possibilities for its customers and each year brings more than 250,000 decision makers together to network, source, test, buy and sell brilliant products, services, ideas and solutions. www.i2ieventsgroup.com

Headline Partner:



Dulux is the world's leading brand of premium quality paint, providing DIY users and professional painters with the range, help and inspiration to achieve the best looks you need. AkzoNobel is the manufacturer of Dulux paints, which strives to live out the brand vision of "Adding Colour to People's Lives". Wherever you travel, Dulux has almost certainly been there before you. But while our products vary from country to country, our ambition remains the same: to help people create a beautiful place to live and work. And to make those good looks last.

Nominees:

Full list of all nominations below.

Category: Bars & Restaurants

Architect/Designer: SANJAY PURI ARCHITECTS

Project: Auriga

Location: Mumbai, India

Transformed from a disused warehouse, Auriga is a nightclub and restaurant that creates the feeling of being within a sculpture rather than looking at one. The nightclub on the ground floor is made up of a series of angular aluminium fins that fold to create the roof, the walls, bar and staircase. On the second floor the

restaurant is a more fluid design to contrast to the angular shapes downstairs, thin wooden strips flow freely from the ceiling and walls to the bar and kitchen counters. Auriga has been designed and delivered on a small budget and in a sustainable manner, the lower floor is made from the waste metal left over from the manufacturing of air conditioning units and the upper level is leftover wood from other projects.



Category: Bars & Restaurants
Architect/Designer: studio mk27
Project: Riviera Bar
Location: Sao Paulo, Brazil

Open since 1949, the Bar Riviera is famous in Sao Paulo as a meeting spot for intellectual left wing member during the military regimes of the 1960s and 70s. The new Riviera Bar is the product of famous nightlife entrepreneur Facundo Guerra and Alex Atala, chef of DOM, one of the most prestigious restaurants in the world of contemporary gastronomy. The downstairs of the bar comprises a glass brick wall and a central bar area, the original sculptural staircase leads to the upper level where live music takes place. Classic modern furniture such as Bertoia bar stools and Danish 7 Series chair by Arne Jacobsen compliments the dark wooden walls and floor.



Category: Bars & Restaurants
Architect/Designer: Wowhaus
Project: Central Writers House (CDL)
Location: Moscow, Russia

Since 1934, the CDL restaurant has occupied the reception rooms of a mansion on Povarskaya Street in Moscow, the original building dates back to 1887. Serving as a venue for freemasons gatherings before the 1917 Revolution, both the building and the restaurant are related to the contradictory history of the Soviet literati class. In the 1930s the building was passed to the USSR Writers Union. The main hall has been a restaurant for 80 years, and the new management were determined to respect this age-old tradition in the new design by Wowhaus. The main hall features a grand chandelier from the 1930s, rumoured to be Josef Stalin's gift to the Soviet writers; new decorative wall panels were added to improve the ambience of the

space away from the original gothic state and white perforated panels were added to the restaurant to add a new dynamic to the space.



Category: Bars & Restaurants

Architect/Designer: JOYCE WANG STUDIO

Project: MOTT32

Location: Hong Kong

Originally a storage facility for family heirlooms forgotten by wealthy Chinese immigrants, Joyce Wang Studio combined this history into their contemporary design. MOTT32 creates a blend of industrial New York design and classical Chinese décor, complemented with an inspired collection of forgotten heirlooms, Colonial-style furnishings and antique Chinese propaganda. Accessibility to the site for diners was also a difficult issue to tackle for the practice due to a long snaking route but this meandering path now creates a more hidden and exclusive arrival experience.



Category: Bars & Restaurants

Architect/Designer: De Matos Ryan

Project: Christopher's - Covent Garden

Location: London, UK

One of London's most famous restaurants, Christopher's in Covent Garden new redesign evokes the real and imagined history of the building, which was built in the 1860s to house a Victorian social and sporting club, and re-established in 1870 as London's first licensed Casino. Christopher's comprises three distinct areas for drinking and dining: a ground floor Martini Bar, an elegant dining room on the first floor and a club room for private events on the lower floor. Each of these spaces has been individually characterised whilst establishing a clear consistent tonal and material palette throughout. The entrance hall sets the tone with its charcoal grey walls, restored marble floor and domed ceiling highlighted with warm silver ornaments. The Martini Bar is conceived as a theatrical and atmospheric drinking

parlour, with a double height space further accentuated by a 6.6 metre long onyx sharing table leading up to the main focal point of the room, a gold mirrored and brass clad bar. The furniture is bespoke and carefully arranged to create intimacy within the larger dining space and maximise magnificent views across Waterloo Bridge from the smaller dining space.



Category: Bars & Restaurants
Architect/Designer: DISTILLERY
Project: MANHATTAN BAR
Location: Singapore

The Manhattan Bar draws on the history and the elegance of the legendary grand hotel bars of the past. Located on the second floor of the Regent Hotel in Singapore, Manhattan bar uses rich and luxurious materials and is a homage to the craft and style of cocktails. Eight metre long chesterfields, dark leather chairs and antique mirrors are used to create stylish yet luxurious surroundings in the central areas of the bar. The main bar itself is expressed as both the centrepiece for the venue and main stage for the bartender. To emphasise its significance, it is elevated three steps above the main salon. Sensually formed timber balustrades lead the guest to a platform finished with inlaid scalloped marble surrounding the leather clad curved bar front.



Category: Bars & Restaurants
Architect/Designer: Asylum Creative Pte Ltd
Project: Johnnie Walker House, Seoul
Location: Cheong Dam, Seoul, South Korea

The design of the new Johnnie Walker whisky house in Cheongdam, Seoul – the third of its kind in the region – is inspired by luxury, something which is prevalent in this high-end neighbourhood. This six-floor, 16,000 square foot space features an invite-only basement distillery bar, a sky bar, world-class bartending academy and a private blending room. The House provides visitors with an interactive whisky journey, learning about the heritage of the brand and a chance to see sculptures and illustrations by local Korean artists. On the third floor, the World Class Academy provides budding bartenders the opportunity to learn the art of cocktail making and be inspired by the tools, books, images and drink recipes that highlight the history and glamour of the industry. On the exterior, Asylum Creative has clad the Johnnie Walker label in copper, which brands the company's tagline 'Keep Walking'. During

the day, light catches the copper exterior capturing the colour and reflective quality of the drink itself.



Category: Civic, Culture and Transport

Architect/Designer: a21studio

Project: The Chapel

Location: Hochiminh, Vietnam

The Chapel is a community space in a new urban area on the outskirts of Hochiminh city, Vietnam. Lacking of communal centers, The Chapel is designed to be a central point for the local community, especially youths, to participate in activities such as conferences, weddings, exhibitions or simply somewhere to have a coffee. The Chapel is made up of materials from the owner's previous projects such as the steel frames and metal sheets, which allows it to be produced on a low budget. A tree-shaped steel column is the only structure that appears inside the Chapel, helping to create a spiritual aesthetic whilst also saving more space for different activities. The multi-layer colourful curtains are arranged at either end of the space to add more colour as well as softening the coldness of the metal frames.



Category: Civic, Culture and Transport

Architect/Designer: One Plus Partnership Limited

Project: CINE TIMES

Location: Hong Kong

The design of Cine Times traces back to the roots of filmmaking, in an age where movies are rapidly changing with new technologies One Plus Partnership set out to subtly remind visitors of the original black and white pictures of the 19th century. Free flowing walls symbolise the rolls of film with thin breaks reminiscent of the breaking and reunifying the rolls of film. Lights fill every void and hang in multiple directions from the ceiling, allowing visitors to imagine themselves as the star of the movie they are about to see.



Category: Civic, Culture and Transport

Architect/Designer: One Plus Partnership Limited

Project: NANCHANG INSUN INTERNATIONAL CINEMA

Location: Hong Kong

The design of Nanchang Insun International Cinema, draws heavily on the influence that both books and films have had on the area. Black and white are the two main colour components of the cinema, with the white referencing the paper of the pages, and the black echoing not only the typeface, but also the black frames used by cinematographers to capture film. The walls of the cinema are constructed so that they allude to the turning pages of the books and film scripts. Two huge marble pillars reference the spines of the books. Narrow strips of green cylindrical spotlights arranged in a crisscross formation hang from the ceiling, echoing the shape of tree branches stretching out from the trunk and the origin of books – trees and wood.



Category: Civic, Culture and Transport

Architect/Designer: FHAMS Ltd.

Project: THE SODOH HIGASHIYAMA KYOTO

Location: Kyoto, Japan

The Sodoh Higashiyama Kyoto was once the private residence of the Japanese great master painter Seiho Takeuchi, which has been renovated and extended to include a newly-built banquet hall and extended wedding facilities. The Sodoh Higashiyama Kyoto also features a Music Hall, which faces the south. The Music Hall is designed so that diffused sunlight from the garden's ornamental pond is reflected on the external facade and the interior. Higashiyama Ward in Kyoto is a region with many ancient temples, which has heavily influenced the project.



Category: Civic, Culture and Transport

Architect/Designer: francis-jones morehen thorp

Project: Tasmanian Museum & Art Gallery

Location: Tasmania, Australia

The Tasmanian Museum and Art Gallery (TMAG) is one of the oldest museums and art galleries in Australia and a site of national significance. The stage 1 redevelopment and adaptive reuse interweaves the heritage buildings on the museum's campus at Constitution Dock on Hobart's waterfront. The heritage buildings on site include the Commissariat Store (1808-10), the Private Secretary's Cottage (1815) and Custom House (1902) which are not only significant in their own right, but are also themselves artifacts and part of the TMAG collection. Inspiration for the project was drawn from the local artifacts within TMAG's extensive collection. The new build elements were integrated into the existing heritage fabric to create a coherent museum complex, providing a prominent and significant site for Hobart. The most spectacular example is the 1901 truss roof over the Central Gallery, which was painstakingly raised one floor level. The new spiral staircase is another key feature of the interior, as it sculpturally connects the modern forms with the existing heritage structure. The new design provides a fully functioning modern facility, from office and administration to public and function spaces through to conservation, display and archaeologically significant zones. The adaptations allow public access to previously unseen spaces, restricted because of the fragile nature of the buildings. The project adopted an innovative approach by combining traditional materials and construction methods to repair and adapt.



Category: Civic, Culture and Transport

Architect/Designer: SCDA Architects

Project: National Design Centre

Location: Singapore

The National Design Centre Singapore is a regeneration and alteration of a set of three pre-war and one post-war buildings, on the former premises of a convent school built in 1879. The existing structures have Art Deco facades and the site sits

within the conservation district and art precinct of Bugis-Bras Basah. Conceptually, the main design feature is a composition of four mesh screens wrapped in aluminum and full-height glass walls, which cantilever and overlap to form the atrium. The central courtyard has been adapted to become subtly visible from street level, with the entire first storey level serving as a pedestrian thoroughfare and piazza to draw in the public. A bistro café links the pedestrian street to the central courtyard, with galleries running the length of the courtyard, opening into an alfresco café area. The school's former chapel has been converted into a flexible space for both auditorium and exhibition functions, with the walls faithfully restored, and a new geometrically folded ceiling introduced. The existing flat roof area has also been opened into a landscaped terrace. The National Design Centre Singapore will house displays and showcases of innovative design.



Category: Civic, Culture and Transport

Architect/Designer: BVN Donovan Hill

Project: Regional Terminal at Christchurch Airport

Location: Christchurch, New Zealand

Arranged by Air New Zealand, the major user of the Christchurch regional terminal, the brief was to design an airport that creates a memorable space that was representative of New Zealand's culture. The Christchurch Airport Regional Terminal building has been designed to create a completely separate identity from the recently expanded Christchurch Domestic and International terminals. The external form of the building is deliberately neutral on the surrounding landscape to ensure a memorable contrast between the interior and the exterior. The narrative for the structure was to abstract natural forms related to the Island, which led to the folded form of the ceiling - reminiscent of the Southern Alps, which are the backdrop for the airport. Entry to the terminal is characterized by the concrete arch that visually separates the domestic and regional terminals and creates a recognizable symbol for the terminal.



Category: Creative Re-use

Architect/Designer: gpy arquitectos

Project: FIT! The Canary Islands Tourism and Innovation Factory

Location: Adeje, Spain

The FIT! Tourism and Innovation Factory is intended as a strategic meeting point for both business, the university sector and key stakeholders in the tourism industry. The FIT! is housed in the Costa Adeje Tourism Development Centre (CDTCA), and the project involved the conversion of two spaces on the ground floor and basement of the existing building, previously used as storerooms. The main entrance level on the ground floor is set up as a large vestibule, with direct access to the outside. The basement level is a continuous multifunctional space, which can be easily divided into meeting, presentation and conference areas and showrooms, with a system of retractable fabric blinds and curtains. An open staircase creates a fluid space for interaction and exchange, connecting the centre's two levels and the functional spaces are separated from the technical areas at the periphery by a continuous enveloping of cast U-glass. The new premises offer spaces designed to implement the latest products and management models in the fields of hospitality, catering, leisure, and to provide specialised training and interior design consultancy services.



Category: Creative Re-use

Architect/Designer: Park + Associates Pte Ltd

Project: Architect's office at Kim Yam Road

Location: Singapore

The original interior of this former school compound is an expanse of column-free long-span spaces with a barrel vault-and-beam roof structural system with cross-ventilation and natural light in abundance. The brief was to create 'an anti-office', celebrating informal space in the corridor, staff office and library. The generous corridor space is now home to a triple-height foyer, containing a meeting room and gallery space. A black steel staircase connects to the guest lounge above and an existing metal screen, restored and retained, marks the opposite end. The strategic placement of objects and furniture in foreground, mid-ground and background allows the full depth of the room to be read while a series of black arcs between two offsets rows of V-section steel posts, accentuate the curvature of the white ceiling. The social heart of the office is an open dining area where the original vaulted ceiling is accompanied by matt black walls, furniture and accents. A series of gold textured ceiling coves, rough plastered walls, textured timber flooring and the abstract patterns of Mutina Azulej cement tiles by Patricia Urquiola enables it to comfortably host a variety of functions - reception, guest lounge, casual events and informal meetings.



Category: Creative Re-use

Architect/Designer: Neri&Hu Design and Research Office

Project: Design Republic Design Commune

Location: Shanghai, China

Located in the center of Shanghai, the Design Commune houses the new flagship store for Design Republic, a modern furniture retailer. The Commune features a design gallery, an event space, a café, a restaurant by Michelin-Starred Chef Jason Atherton, and a one-bedroom Design Republic apartment. Situated within the historic relic of the Police Headquarters built by the British in the 1910s, Neri&Hu introduced a modern glass insertion onto the brick façade creating a direct contrast with the interior, where modern white rooms are juxtaposed with untouched remnants of brick walls.



Category: Creative Re-use

Architect/Designer: MPH Architects

Project: Sustainable Industries Education Centre - Tonsley Tafe

Location: Adelaide, Australia

The Sustainable Industries Education Centre (SIEC) - Tonsley Tafe project is an initiative of the South Australian government to reduce operating costs of the TafeSA's Building and Construction Trade Training programs. The scheme sets out to consolidate five aging campuses into a single contemporary site. The new facility is an example of adaptive re-use on a major scale, as 90 per cent of the existing steel structure has been retained and a new flexible and adaptable education facility have been created to provides opportunities for innovation and displays of students' work. The internal layout successfully provides a variety of spaces for student learning and glazed partitioning is used throughout to maximise the showcasing of work. The internal design surrounds two intersecting streets that separate the public

areas and the teaching and learning spaces.



Category: Creative Re-use

Architect/Designer: CIT

Project: Architecture Factory

Location: Cork, Ireland

Created from an existing warehouse, this cost effective education and learning facility uses shipping containers to create lecture offices and studios. An open boulevard creates both easy circulation around the site and acts as an interactive and co-learning area. Prior to designing this project CIT tested the learning outcomes of using shared studio spaces and the results showed that learning improved dramatically when students were directly exposed to their peers work and learning techniques. This outcome saw the design focus on open space and student interaction at the core of the site. Architecture Factory holds 13 workspaces delivered for just €60,000 and accommodates 332 people.



Category: Display

Architect/Designer: Taiwan DaE International Design Career

Project: Zi Garden/Tangquan Tea Club

Location: Huizhou, China

Using the ancient principles of Chinese culture, the Tangquan Tea Club uses traditional Chinese materials and ancient architecture styles and techniques to create an area that interacts with the exterior and interior to create a zen like state for the visitor. Rough green slate and natural wood floors make a direct relation to the exterior surroundings and create an environment of relaxation and simplicity. The space includes three separate tearooms, a library and a lake that can be viewed from all rooms.



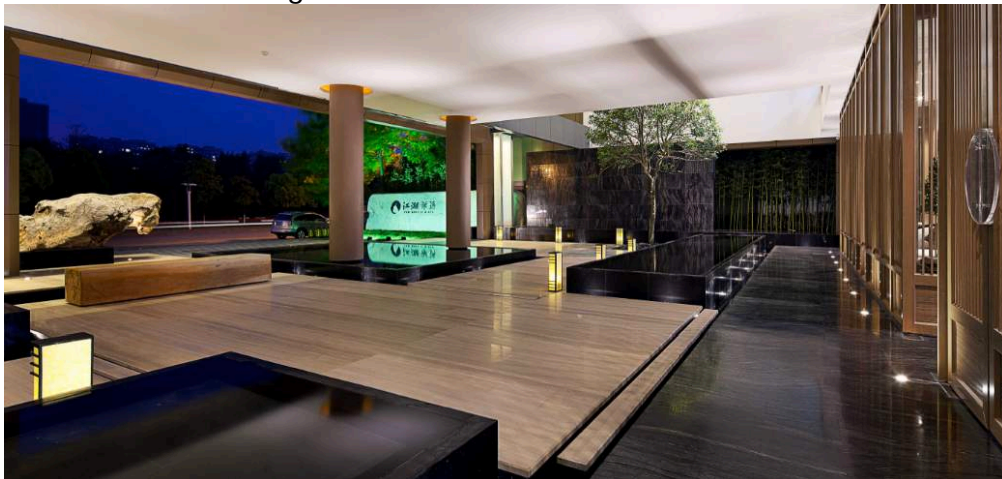
Category: Display

Architect/Designer: Taiwan DaE International Design Career

Project: Zen Resort & Spa Sales & Exhibition Center

Location: Yichun, China

Chinese Quadrangles have influenced the characteristics of this structure, which is an adaptive re-use of an older building and former seafood restaurant. The Zen Resort, Spa Sales and Exhibition Center has three floors, with the main exhibition area occupying the first floor, with VIP rooms, offices and dining facilities occupying the other two. The exhibition area is divided into three main parts, the reception area to the middle, the negotiation area to the left and the main exhibition area to the right. The three spaces exist respectively in artificial partitions, which are independent but linked visually and mechanically, in a thematic design element of wooden grids. The steel structure is composed of thin straight columns which populate the interior space and visitors enter the sales and exhibition center by passing through a man-made waterscape. Located in Yichun City, the site is close to Xiujiang Garden Residential Area to the west, the Royal International Mansion to the east and the Huacheng Wetland Park to the south.



Category: Display

Architect/Designer: Mission & Associates Limited

Project: Sales & Exhibition Centre of ZhongShan Vanke Baiyue Wan

Location: ZhongShan, China

The designer was invited to create a unique and iconic sales and exhibition hall for a scenic property development in ZhongShan, a southern city in China. Expected to symbolise the culture of the developer, the scheme aims to become a landmark of the region. Sited in front of a picturesque golf course, the interior is an almost rectangular concrete envelope with columns set out in regular intervals. The south elevation overlooks the golf course, which inspires the layout of the scheme. A straight ramp cuts through to the corporate exhibition area and back office to the highest level of the main exhibition area, mediating between the rectangular architectural space and oval shaped platforms. The ceiling design is inspired by the utopia described in the ancient Chinese fable “The Peach Blossom Spring” by Tao Yuan Ming, with hundreds of linear pearl white aluminum louvers forming giant funnel shapes. Some of the louver contours merge with columns to form arches, while some are suspended from the ceiling to symbolise the vines of a banyan tree and pouring springs.



Category: Display

Architect/Designer: Singapore University of Technology and Design

Project: IDC Space: research and display space for the International Design Centre

Location: Singapore

Situated at the heart of the Dover Campus of the Singapore University of Technology and Design, IDC Space is a showcase space for the International Design Centre. The 13m x 16m space hosts an office, a small prototyping lab as well as an exhibition gallery for showcasing some of the most exciting on-going IDC design research work. The space features a ceiling installation comprised of 6000 custom-designed lighting and display components; the light fixtures are based on a patent-pending SUTD/IDC design. Partitions, posters, and exhibition panels are suspended from the ceiling so the space can quickly be reconfigured for multiple uses.



Category: Display

Architect/Designer: Hallucinate

Project: Line Soul

Location: Beijing, China

Hallucinate were invited by well-known fashion brand Line Soul to create a display for its 2014 China International Clothing & Accessories Fair Exhibition. True to the brand's simple, unique and comfortable aesthetic – along with its unconventional cutting-edge design – they created a geometric space, full of illusion, using dozens of Plexiglas see-through frames with a kaleidoscopic pattern, which shimmer and sparkle to attract visitors to step inside. They applied dozens of these see-through frames in angles around the display area, merged with kaleidoscopic patterns on the frames, in order to create a space that fascinated visitors with a feeling of a simple, modern space.



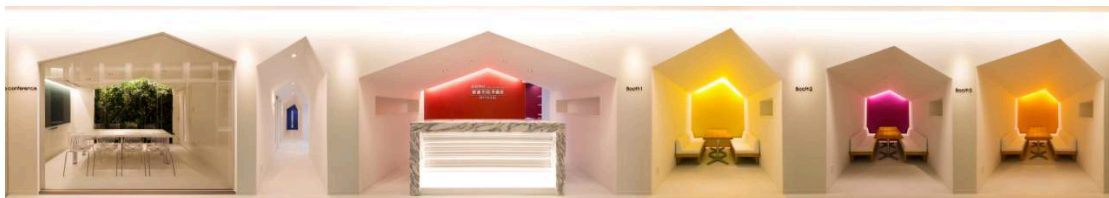
Category: Education and Health

Architect/Designer: Matsuya Art Works.co.ltd.

Project: Toshin Satellite Preparatory School

Location: Kobe, Japan

Located in a bustling shopping district and in an area with a high concentration of girls' schools, the exterior of the Toshin Satellite Preparatory School is made entirely of glass. The aim was to make this project enticing for new student enrolment in a highly competitive space. Inside, a series of gabled roofs – typical in Japanese children's books – capture the idea of 'KAWAII' meaning 'cute' and should appeal to female students. Pentagonal forms are arranged in irregular shapes, conveying a feeling of imperfection and further enhancing the 'KAWAII' concept.



Category: Education and Health

Architect/Designer: NIKKEN SEKKEI LTD

Project: Interior renovation project of the Concert Hall of Tokyo National University of Fine Arts and Music

Location: Taito-ku, Tokyo, Japan

This concert hall renovation at Tokyo National University of Fine Arts and Music provides a much-needed sound insulation upgrade. The original room had acoustic reflection walls but no sound absorption so there was a problem of concerts being interrupted by sound from the practice room. Adding new sound absorption walls reduces the interior space, which in turn affects the sound quality. Therefore, the sound reflection and absorption walls were integrated and interior structural materials of the ceiling and walls (not normally seen) were exposed. This integration provided more space, improved sound quality and sound insulation performance. 3D CAD and acoustic simulations were used to make the exposed interior structural members into acoustic diffusers, which results in better sound quality.



Category: Education and Health

Architect/Designer: Lekker Architects Pte Ltd

Project: Cove 2

Location: Singapore

Cove 2 is the first design-driven preschool in Singapore. Unfortunately, as with many Singaporean pre-schools, Cove 2 is sited within a somewhat generic office space, lacking many of the elements one would expect in a vibrant or attractive educational setting. In response to this, the designers have created a building-within-a-building, a reconstruction of a schoolhouse within the neutral column-field of the office unit. The space around the 'house' becomes something like a schoolyard: four open-planned learning zones set under columns re-cast to resemble trees. Within this schoolyard seating was re-imagined as a collection of soft topographical forms, rather than conventional chairs. Periscopes allow smaller children to peer out as the windows of the original office unit are positioned above a child's eye-level. An observation booth—for trainee teachers—is designed as a garden shed, and can be used by children who desire a quiet moment or an intimate space to retreat. Outside, the team created a set of follies, suggesting storybook themes in a highly abstract design language of form and colour. There is a tiny house, which alternately resembles a factory, a theatre, and a crocodile. There is a winding river of sand, and a shelter in the woods. There are also a range of conical 'hills' – a hybrid of Aldo Rossi and 'Yellow Submarine' – which can be climbed.



Category: Education and Health

Architect/Designer: ADEPT

Project: Dalarna Media Library

Location: Falun, Sweden

This 3,000m² multi-functional library is laid out as a 'spiral of knowledge' that naturally integrates into the surrounding landscape at the Dalarna University Campus in Falun, Sweden. Together with an international team, ADEPT has designed the library and the surrounding urban spaces as a dynamic meeting place with activities for students, staff and visitors. The natural terrain of the surrounding landscape continues seamlessly inside as a ramp spirals up through the central atrium of the library. The library has become simultaneously a study environment and a meeting place, with students instantly utilising group spaces and areas for individual work.



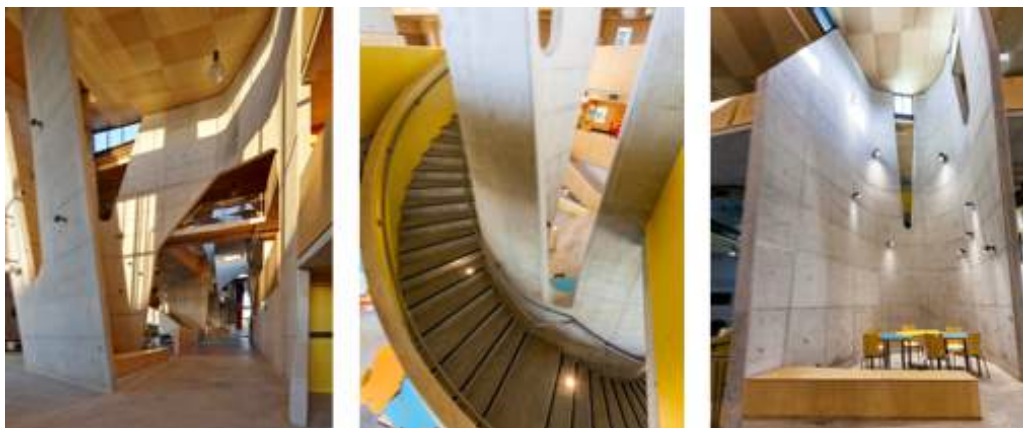
Category: Education and Health

Architect/Designer: CRAB studio

Project: Abedian School of Architecture, Bond University

Location: Gold Coast, Australia

The Abedian School of Architecture is located on the Bond University campus designed in the 1980s by Arata Isozaki. The building is a long, airy structure split over three levels articulated by a series of rooms that can be used for casual meetings and 'crit' sessions. These casual meeting areas line the central street that gently rises up the hilltop site.



Category: Education and Health

Architect/Designer: CIT

Project: Architecture Factory

Location: Cork, Ireland

Created from an existing warehouse, this cost effective education and learning facility uses shipping containers to create lecture offices and studios. An open boulevard creates both easy circulation around the site and acts as an interactive and co-learning area. Prior to designing this project CIT tested the learning

outcomes of using shared studio spaces and the results showed that learning improved dramatically when students were directly exposed to their peers work and learning techniques. This outcome saw the design focus on open space and student interaction at the core of the site. Architecture Factory holds 13 workspaces delivered for just €60,000 and accommodates 332 people.



Category: Education and Health

Architect/Designer: Woods Bagot

Project: South Australian Health and Medical Research Institute

Location: Adelaide, Australia

The South Australian Health and Medical Research Institute (SAHMRI) is a research facility housing approximately 675 people, two research labs and a multipurpose seminar room. Woods Bagot worked closely with the clients to include all current and potential needs of the facility. The multiple floors are connected by a large spiral staircase that runs through the building and the two research labs are connected to one another by an internal atrium to the east. The facade allows maximum daylight into the building as well as enhancing the external views, creating a more enjoyable working environment. The unique facade was designed to improve daylight, while reducing heat and glare.



Category: Hotels

Architect/Designer: PIA INTERIOR COMPANY LIMITED

Project: Hilton Sukhumvit Bangkok

Location: Bangkok, Thailand

Hilton Sukhumvit Bangkok, a 4-star hotel constructed in the heart of Bangkok, has been designed to be different from what can be considered the standard hotel chain design. The ground floor space sets a bright warm tone and uses modern artwork to create a gallery like feel upon arrival. A large floral graphic is used on the ceiling to create a signature for the hotel that is seen as soon as the guest enters. The hotel features an all day dining lounge, library and grand spiral staircase. The rooftop pool provides stunning views of the city whilst providing a calm and tranquil area for guest.



Category: Hotels

Architect/Designer: FHAMS Ltd.

Project: Tama Hotel Phnom Penh Tower

Location: Phnom Penh, Cambodia

Located in the Phnom Penh Tower building, the Tama Hotel has been designed for overseas business visitors. Workspace and comfortable settings suited for both long and short stay guests' help to create a homely environment. The restaurant has been designed to be a working lunch space for entertaining clients and desk space for laptops.



Category: Hotels

Architect/Designer: a21studio

Project: The Tent

Location: Nha Trang, Khanh Hoa, Vietnam

The Tent is a small spa perched in the folds of a rock face terrace, inside an operating hot spring and mineral resort looking over the main river of Nha Trang city, Vietnam. One of the biggest constraints of the site is the intense heat from the West, which is constant throughout the year but the Tent's steep roof with thick thatch helps not only to deflect the sunlight but also blends the project with the surrounding landscape. The roof props lend a distinctive look to the Tent, shields the interior against the elements and also makes up the main structure of the building. The main beams that span the Tent are connected using indigenous building techniques, mortise and tenon joints, together with local materials, dry-stacked stones and coconut leaves, with rocks quarried on site and reinforced steel and tiles. Inside the Tent, the space is divided into two levels, on the lower space there is an infinity mineral pool with traditional wooden furniture. On the upper floor, there is a private bedroom covered by a wood frame and coloured glass with a net installed in the void between the structure and rock, allowing guests to look down to the river below.



Category: Offices

Architect/Designer: Spaces Architects@ka

Project: Architects Office

Location: New Delhi, India

This architects' office been designed as an open office space, designed for people to work in a creative environment, and a workplace to enjoy. The office space is split on two levels, with the lower to be used as the primary workstation area. The upper-level front office space is narrow and used as a gallery but boasts a fixed glass roof, allowing ample light to penetrate down into the lower interior space. The lower part has open workstations connected by cantilevered wooden steps, which open out from the front office. A green space to the rear is used as a breakout space and has grass flooring and elliptical seating. The ceiling plays an important role in the studio creating a visual transition through the office. An abstract partition acts as waiting area and continues on the ceiling extending into multiple abstract boxes to display parts of the firm's design ideology. Similarly, there is an elliptical ceiling over the reception and the circular seating in green breakout area is reflected on the ceiling, continuing into the rear space.



Category: Offices

Architect/Designer: Hyunjoon Yoo Architects

Project: HUB & SCL

Location: Seoul, Korea

HUB is a social network environment where young entrepreneurs can go to start their own business. Thanks to municipal financial support, the space is free for people to use and provides space, networking, education and some financial consulting. The space is designed as a mini city allowing different parts and purposes to interact with each other. Flexibility of the space was vital as the ultimate purpose of the space was unknown. Temporary walls were used to create pop-up offices and multifunctional furniture was employed.



Category: Offices

Architect/Designer: Eight inc

Project: DonorsChoose.Org Headquarters

Location: New York, USA

Eight Inc. recently teamed up with and donated their design services to DonorsChoose.org for their new headquarters. DonorsChoose.org is a national non-profit company that has channelled over \$237 million in books, art supplies, field trips, and other resources to more than a million students in low-income public schools. A rapidly growing organization, DonorsChoose.org have transitioned to a much larger space, with this change they sought additional conference rooms, better light quality, less clutter, and the ability to accommodate future growth. By designing a space with minimal traditional walls, millwork display walls that double as storage units, and flexible worktables, Eight Inc. was able to achieve these parameters in a simple and straightforward layout. Eight Inc. used a series of tools and forms typically found in educational spaces and reinterpreted them for the modern office but also providing staff with a nostalgic nod towards education. Eight Inc. collaborated with Lux Populi, a Mexico City based lighting design firm, who also donated their design services to the project free of charge. Charitable donations were made by ABC Carpet & Home, American Standard, Berco, Best Buy, Birchwood Lighting, C3 Design, Daltile, Fidelus, FilzFelt, Grainger, Interface FLOR, Kimball, Pfister, Poppin, Quill.com, School Specialty, The Shade Store, Sherwin Williams, Teachers School Supply, Vandersluis and Target to bring together this working 'playground.'



Category: Offices

Architect/Designer: BVN Donovan Hill

Project: ASB North Wharf

Location: Auckland, New Zealand

Based on the idea of transparency, the ASB North Wharf provides an easy to navigate design and a clear view of how customers, the public and the staff interact with the building. The workplace planning methodology behind the scheme is based upon the principles of Activity Based Working (ABW) which involves freedom of

choice for work settings, and sees a series of multifunctional areas that can be used for meetings, staff interaction or quiet working zone. The atrium is designed with shipping and nautical references, five colours are used throughout the building that reference the nautical colours used in navigation signage. During the design process BVN Donovan Hill embraced the principles of how air, light and water work in the built environment to incorporate and maximize the passive features of the building to deliver significant energy reductions and environmental benefits.



Category: Offices

Architect/Designer: Clive Wilkinson Architects

Project: The Barbarian Group

Location: New York, USA

This radically simplified office concept imagines an endless table that physically connects everyone in the office to each other. With a highly constrained budget, the architects adapted an existing office space for a flexible community of 125 to 175 people, recycling perimeter rooms and services for acoustically controlled spaces and clearing the central zone. The endless table's plywood structure rises from the existing oak floor with pony walls supporting the table, which is lifted to fly over the pathways in the office. By maintaining surface continuity, this results in arches with grotto-like spaces underneath which can accommodate a variety of amenities, meeting spaces, private focused workspace, or bookshelves and other storage. The top surface of the table is an ethereal pearlescent white, with a clear epoxy coating, emphasising its fluid nature. After being initially drawn by hand and then molded in a physical model, the plywood supporting structure was thereafter entirely shaped by computer-aided design. In its final form, the table is made up of 870 unique plywood panels equating to a 4,400 square foot surface.



Category: Offices

Architect/Designer: HASSELL

Project: ANZ Tower

Location: Sydney, Australia

ANZ is one of the world's strongest banks, with its origins in Australia and New Zealand. Workplace design is acknowledged as one of the keys to its ongoing success, driving greater efficiency and effectiveness and helping it recruit and retain

the best people in a very competitive market. Set inside a transparent office tower, HASSELL introduced a series of intimate, three-storey pocket atriums, linked by open staircases. Communal zones with a mix of meeting spaces and work settings invite staff to move up and down the connected floors and interact more widely with other employees. Each floor is divided into four distinct neighbourhoods, with social hubs at their heart and a mix of workspace options. Employees can choose to work in quiet, private spaces, or meet in shared areas for collaborative tasks. Staff work wherever they like, choosing the right setting for the task at hand and using mobile technology. The design is flexible, making it easy to accommodate changes to work requirements or individual transactions and projects that bring together significant numbers of people in temporary teams. Lighter finishes such as limed oak, pale timber flooring and golden marble reflect the Sydney landscape and draw on the features and palette of Sydney Harbour, in contrast to the bolder tones of the ANZ Centre in Melbourne.



Category: Offices

Architect/Designer: Park + Associates Pte Ltd

Project: Architect's office at Kim Yam Road

Location: Singapore

The original interior of this former school compound is an expanse of column-free long-span spaces with a barrel vault-and-beam roof structural system with cross-ventilation and natural light in abundance. The brief was to create 'an anti-office', celebrating informal space in the corridor, staff office and library. The generous corridor space is now home to a triple-height foyer, containing a meeting room and gallery space. A black steel staircase connects to the guest lounge above and an existing metal screen, restored and retained, marks the opposite end. The strategic placement of objects and furniture in foreground, mid-ground and background allows the full depth of the room to be read while a series of black arcs between two offsets rows of V-section steel posts, accentuate the curvature of the white ceiling. The social heart of the office is an open dining area where the original vaulted ceiling is accompanied by matt black walls, furniture and accents. A series of gold textured ceiling coves, rough plastered walls, textured timber flooring and the abstract patterns of Mutina Azulej cement tiles by Patricia Urquiola enables it to comfortably host a variety of functions - reception, guest lounge, casual events and informal meetings.



Category: Offices

Architect/Designer: Haptic Architects

Project: Arkwright

Location: Oslo, Norway

Arkwright is a European consultancy that specialise in strategic advice. Their new office space, created for 40-50 employees, includes workspaces, reception and back office, kitchen canteen, meeting rooms, breakout space and a “James Bond” room. The office is located along the prime harbour front of Aker Brygge in Oslo, Norway, in an old converted warehouse building with a large arched window as its centrepiece. The office is entered on the top floor. A new reception incorporates back offices, reception desk and a large stair/amphitheatre that straddles a double height space. The design is inspired by “svabergs”, large granite stone formations that are typical for the area, rounded and polished by icebergs thousands of years ago. The “James Bond” room is a windowless bunker-like space, sitting deep in the building - a difficult space to work with. This seemingly unpromising space has been transformed into an executive lounge, for quiet contemplation, creating a private, intimate and calming atmosphere.



Category: Offices

Architect/Designer: Woods Bagot

Project: National Australia Bank

Location: Melbourne, Australia

Located in Melbourne’s Docklands, 700 Bourke Street is a pivotal new workplace building for National Australia Bank (NAB). 700 Bourke Street offers NAB 63,000m² of workspace and accommodates 5900 staff relocated from six offices around Melbourne’s CBD, and has the added flexibility of 100 drop-in staff, community members and consultants. The triangular floorplate of 5,000m² is divided into eight zones that act as Home Zones for approximately 50 people. At the nucleus, a “Huddle” space is used for impromptu, collaborative meetings. The ground floor features the Arena, a theatre which is open to NAB customers and the community as a whole, and can also be closed off securely for seminars and other events. On

level 14, the roof garden is extended into the interiors via a garden cafe. This large open space has been divided into separate moments thanks to green screen elements – steel structures that draw on the forms of the triangulated architecture, with creepers that provide greenery. Brick is used on feature walls in this space to create a sense of the outdoors.



Category: Offices

Architect/Designer: Neri&Hu Design and Research Office

Project: Flamingo Shanghai

Location: Shanghai, China

Neri&Hu's renovation of an industrial roof space in Shanghai into offices for creative agency Flamingo are inspired by notions of the attic. Essentially a flat roof converted to an occupiable space with the addition of a steel A-frame structure, the site itself was a main driver for the design intent, which was to exaggerate and enhance the experience of the existing condition of occupying the space within the eaves of a roof—like an attic. The open work area offers an extensive view of the original structures, while black metal mesh panels frame bright clerestory windows above; the exhibition area features a pure floating roof to encapsulate the space while leaving it open and flexible; and the board room is completely enclosed, but also captures the telltale double pitched roof and features lighting fixtures that mimic natural skylights. To culminate the attic experience, a narrow set of stairs brings you to a small mezzanine level, a hidden room nestled within the other larger ones, its windows offer stolen glimpses into other rooms.



Category: Offices

Architect/Designer: Vo Trong Nghia Architects

Project: Factory Office Renovation

Location: Ho Chi Minh City, Vietnam

This is a factory renovation project for a garment firm located in Ho Chi Minh City, Vietnam. The aim of the project is to redefine the company's identity through renovation in order to stand out among their competitors. The refurbishment is concentrated on two sections, one on the upper floor for administrative office and another small one on the ground floor for the reception. The remaining space is left

for manufacturing work that continued to operate even during the construction period. A theatrical juxtaposition of the existing factory and new office is proposed to emphasize the well-managed factory environment and its dynamism, a spectacle of 1,200 skilful workers sewing numerous ski-wear in a tropical climate. A large window between the factory and the office enhances the communication between administrative staffs and factory workers. Local materials are used throughout the project such as exposed bricks and bamboos to express the local identity and environmental consciousness. The warm natural materials and greenery provoke a stark contrast to the existing steel structure of the factory.



Category: Offices

Architect/Designer: Erginoğlu&ÇalışlarArchitects

Project: Sahibinden.com

Location: Istanbul, Turkey

Located in the Bostancı district on the Asian side of Istanbul, this 5000 m² office space is spread over two floors and emphasises not only on working spaces but relaxation and interaction areas as well. Designed with the spirit of the brand at its core, the new offices for this growing tech company sets out to enhance employee productivity through a comfortable and enjoyable environment. Boardrooms, meeting rooms and working areas are located on the second floor and on the ground floor is a 250m running track, a basketball court, fitness area and café.



Category: Residential

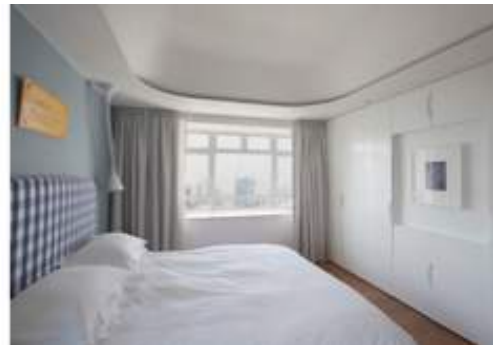
Architect/Designer: Affect-t

Project: Cavendish Heights Residence

Location: Hong Kong

Cavendish Heights Residence is a new home for a young family that plays with the notion of depth and division of space in a relatively confined floor plan. Walls,

ceilings, light, glass and tile surfaces move in and out of plane giving the space a sense of movement. The new three-bedroom flat is a blend of mid-century design influences from both East and West, Hong Kong, UK, and US. The terrazzo flooring pattern in the entry increases in scale as it moves into the kitchen with alternating patterns. Designed using algorithmic software, the digital file was sent to the manufacturer who made exact templates in brass which were then laid on site and filled with terrazzo; a technique nearly abandoned in the Hong Kong after the turn of the century. Fun and vibrant, the apartment takes cues from the owner's history, mixing freely the more traditional techniques of Hong Kong building with contemporary materials and design methods. It seeks to make the most out the space offering many uses in what first appears to be a single open-plan space. Dynamic yet soft, the apartment is a combination of cultures and spaces for different members of this growing family.



Category: Residential

Architect/Designer: WOW Architects | Warner Wong Design

Project: Chiltern House

Location: Singapore

Set in a tropical residential community in Singapore, Chiltern house was designed as a two-storey bungalow with a basement and an attic space. The concrete finished house is a classic modern structure suspended high above the ground floor to maximise light, cross ventilation and views to the surrounding landscape. The house is organised in clearly defined layers connected by a four-storey teakwood staircase that is offset against concrete, steel and glass. The ground floor is the main communal level of the house, with one large main space comprising of living and dining areas, large panelled doors transform the living room from enclosed chamber into to an open verandah. The tall grey wood panelled entrance hall is enclosed by a vintage brass and glass screen, created in 1963 for a Beverly Hills mansion. Sunlight filters into the basement through air wells, and bespoke full-height steel doors open out onto outdoor sitting rooms. The entire ground level is paved in olive green granite to harmonise with the landscape. The second floor was developed around a central, cross ventilated workplace or family study and is realised in a warm Teakwood and Ivory palette. The attic is a retreat above the activity of the levels below and is dedicated to a bedroom suite overlooking a dramatic rooftop lily pond.



Category: Residential

Architect/Designer: Ganna Studio

Project: Ganna Design

Location: Taipei, Taiwan

Located in downtown Taipei, Ganna Studio does not only function as an interior design studio but also as a home for the two designers. All the houses in the local community have been preserved for several decades and can be traced back to the ancient Taipei. In keeping with the local area the building structures was left untouched and the interior was transformed. Classic European interior design features are infused with modern styles echoed by the contrast between the old red gate and mitered herringbone flooring.



Category: Residential

Architect/Designer: Haptic Architects

Project: Idunsgate Residence

Location: Oslo, Norway

Idunsgate is located on the top floor of a 19th century apartment building in central Oslo, Norway and sees the lower floor combined with the newly purchased top floor. The refurbishment includes a bespoke kitchen with open fire, a double height bathroom, and a minimalistic floating staircase. The material palette for the home comprises oak flooring and joinery as a counterpoint to polished concrete, grey stone and white Corian.



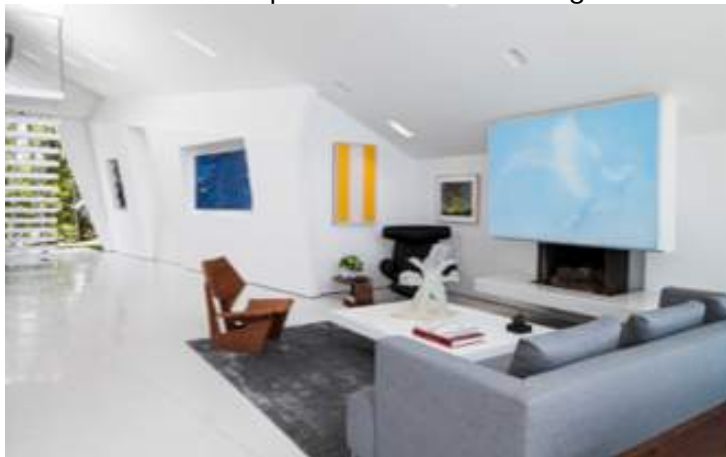
Category: Residential

Architect/Designer: Patrick Tighe Architecture

Project: Montee Karp Residence

Location: Malibu, USA

Located on a hillside site in Malibu overlooking the Pacific Ocean, this 2200 sq ft residence is the result of an extensive remodelling of an existing home in need of an upgrade. The front facade extends inwards to define the interior spaces creating a forced perspective, framing the extraordinary views out to the Santa Monica Bay. A minimal, gallery-like living space is designed to accommodate the client's extensive collection of contemporary art and specialist lighting is used to enhance the experience for the viewer. Solar power is linked to a charging station in the garage for the client's electric vehicle and energy efficient building systems and a sustainable material palette was used throughout.



Category: Residential

Architect/Designer: Manor Studio Pte Ltd

Project: Chu Lin Road Apartment

Location: Singapore

Chu Lin Road Apartment is an intervention within an apartment built in the 1960s post war period, nestled in the quaint neighbourhood of Chu Lin Road. The original footprint of the apartment was both deep and long but suffered from a lack of natural light and ventilation. The impetus of the new design was to retain the spaciousness of the original layout whilst encouraging maximum cross ventilation and natural light. The false ceiling that ran across the space was removed and the original walls were demolished in favour of an open plan space, following the structural beams. These beams, which once used to cap off the full height brick walls, now support a floating solid pine cabinetry in the middle of the apartment. Designed with different heights and porosity, and extending in various directions, this central cabinet piece is conceived as a sculpture that not only forms the focal point of the apartment but also delineates the spaces while maintaining spatial continuity, ventilation and natural lighting throughout the apartment.



Category: Residential

Architect/Designer: Architecture Project

Project: STANHOPE GARDEN PROJECT

Location: London, UK

This renovation of a three-floor apartment into a high-end four bedroom apartment sees Architecture Project contrast the old with the new as they restored existing spaces of this Grade II Listed building at Stanhope Gardens, London. The design sees the re-implementation of traditional decorative elements such as cornices, mantelpieces and skirting to enhance the historic significance of the property. Contemporary objects are explored almost as temporary option as they stand in composition with the restored interiors, they offer the possibility to be removed and restore the home original state of the Victorian interiors or to stay and create a dialogue between old and new.



Category: Residential

Architect/Designer: Arent+Pyke Pty Ltd in collaboration with TFAD

Project: The Avenue

Location: Sydney, Australia

This 1880's terrace and former boarding house was updated in a way that would respect its grand heritage and original architecture. Many of the rooms were stripped back to their original forms, while others were repurposed to provide a study, master room, en-suite and bathroom. The new rear extension to the kitchen was carefully planned to make best use of its narrow volume, with newly designed

openings sensitively integrated into the existing envelope. This new extension houses white joinery, a stainless steel workbench, basalt benchtops and American oak, complimented by Artek lighting and black steel framed doors. The bathrooms combine bespoke detailing and integrated joinery with a graphic black and white palette, developed in response to the client's much loved Enzo Mari "Apple" print. In homage to the existing architecture, the materials palette for the built elements was intentionally restrained, layering colour and texture in the decorative phase of the project to create a richness in the interiors. Almost all of the original material was conserved – refinished and restored as needed.



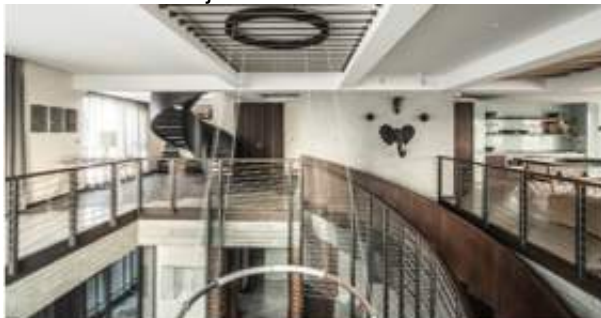
Category: Residential

Architect/Designer: JOYCE WANG STUDIO

Project: XINTIANDI PENTHOUSE

Location: Shanghai, China

A three-storey penthouse set in the heart of Shanghai's Xintiandi district, this private residence boasts some of the best lake and skyline views in the city. A cantilever staircase winds around the double-height atrium and as one ascends the stairs the stunning view unfolds. The dinning area sits within a nest-like environment so the family can enjoy the intimacies of their home. Wood-grain etched concrete, Corten steel and walnut timber line the walls, floors and ceiling in reference to the warehouses of old Shanghai. Geometric graphic patterns are created on the flooring as one material joins another in order to zone various areas in the home.



Category: Retail

Architect/Designer: Persian Garden Studio

Project: Zeeen Shop

Location: Tehran, Iran

Zeeen shop began with a desire to celebrate Iran's traditional arts and craft. The building originally functioned as a commercial and office space over two floors; the challenge was to revive the building and connect the floors into one shop, whilst still preserving the overall shell of the building. Zeeen shop storefront is designed to be

dynamic, with a series of cuts and openings sliced through the blinds that change the face of the store from day to night, the lighting design behind allows the creation of animated patterns. The interior echoes the same dynamic characteristic of the façade, the stairs, middle display, and wall display on the ground floor. The middle display is created from a series of module boxes functioning as display counters, shelves, and storage, creating a changeable display in the middle of the store. The stairs are caged in a rectangular free standing volume and a detached box that continues through to the first floor. The interior walls are dark grey and also function as a gallery. The completed design references Iran's traditional craft skills, materials, calligraphy and patterns.



Category: Retail

Architect/Designer: OpenAir Studio

Project: Just Cavalli

Location: Bangkok, Thailand

The new Just Cavalli concept store features a shop-in-a-shop theme as it flows seamlessly into the Galliano Shop, which in turn flows into the Capital Zen store. Using the visual identity of the Cavalli brand to create the shelving units, the display is constructed from rusted metal and appears to float in the middle of the store. The random patterns of the rusted metal partitions contrast with the glossy, linear walls and are a reflection of the brand.



Category: Retail

Architect/Designer: Make Architects

Project: Harrods Escalator Hall

Location: London, UK

Harrods department store, founded in 1849 by Charles Henry Harrod, has become one of the most famous shops in the world and attracts more than 15 million visitors every year. As part of a multi-million pound refurbishment the Basil Street escalator hall has been redesigned with 16 dramatic new escalators spread over the store's eight floors. In addition to the new escalators Make installed a new rooflight,

restored the original listed Edwardian staircase and completed a full interior fit-out of the hall. The new escalator hall integrates the store's rich history and the values of the Harrods brand with materials, finishes and details that are in keeping with the store's Edwardian style. Inspired by the understated elegance of Art Deco design, the bespoke escalator cladding is formed from handcrafted bronze-finished fluted casings, which mirror the fluting of the stone columns found on the Basil Street exterior. The beautiful 1920s staircase has been meticulously restored to its original splendour and the faux Egyptian theme removed.



Category: Retail

Architect/Designer: Elenberg Fraser

Project: Adriano Zumbo Patisserie

Location: Melbourne, Australia

The Melbourne patisserie by famous chef Adriano Zumbo sees a fantasy world of excess combine with culinary excellence. Designed as part of the Graduate School programme by Elenberg Fraser, the project saw junior architects design the project and gain hands-on construction experience. The brief for the patisserie was to embrace the Zumbo brand and use a bit of pink – the result was a custom designed neon pink sign illuminating mirror pink wall panels to create the feel of an infinite space. Up-cycled furniture was transformed into confectionary creations by adding self-expanding foam and dipping them in pink and white silicone.



Category: Retail

Architect/Designer: Neri&Hu Design and Research Office

Project: Camper Showroom/Office

Location: Shanghai, China

Inspired by the surrounding urban environment, this Camper Showroom reassembles the Shanghai 'nong-tang' alleyways. An exterior lane extends into the showroom creating a sectional cut in the structure and a skylight heightens the experience by casting long linear shadows across the walls throughout the day. Neri&Hu designed the store as their interpretation of a two-storey house slotted in an old warehouse. The project sees grey brick combined with wood salvaged from

demolished lane houses. The salvaged wood reveals a history from the paint, newspaper and wallpaper still attached to the planks.



Category: Retail

Architect/Designer: studio mk27

Project: Cultura Bookstore

Location: Sao Paulo, Brazil

The Cultura bookstore has been designed to be a bookstore for the 21st century, a store where socialising, relaxing and purchasing are all combined. The top floor provides the main area of the store, a large area encased with bookshelves provides an open plan space with lounge chairs where customers can read and discuss. The space also features large tables and can be used for lectures and other events.



Press, image and interview requests:

Caro Communications: 020 7713 9388; @carocomms; @Insidedefestival

Jordan Lewis – Jordan@carocommunications.com

Rob Fiehn – rob@carocommunications.com