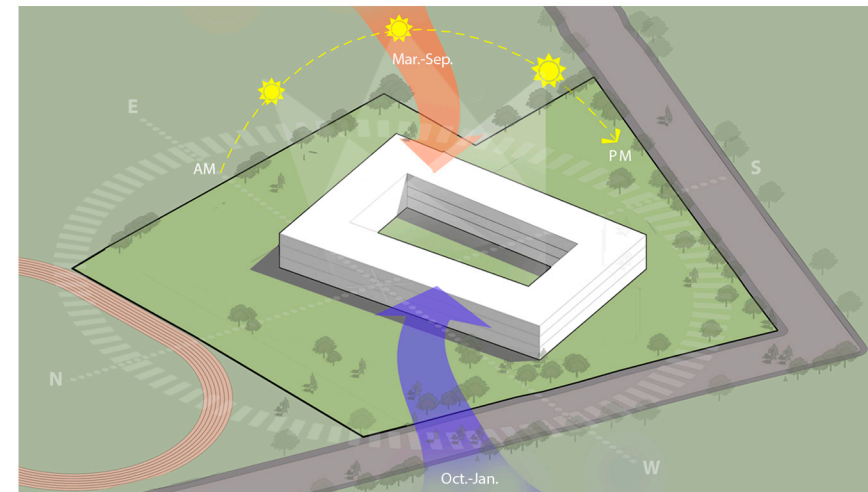
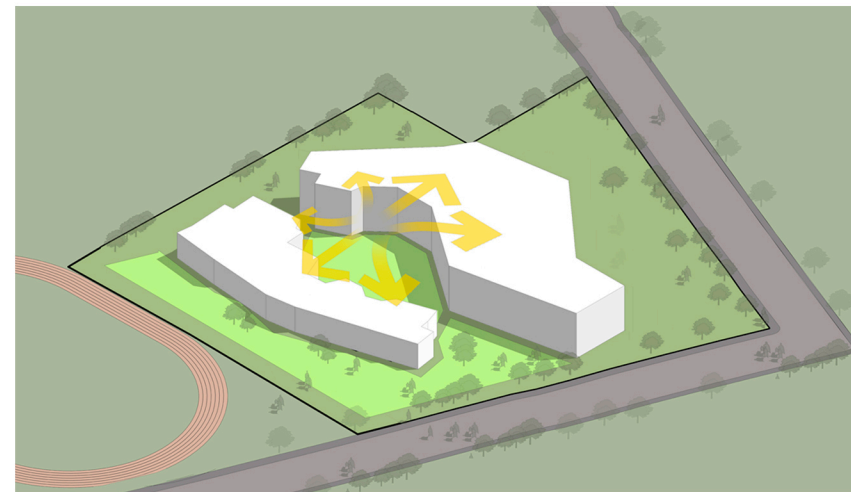




The site opens towards a multipurpose playground and athletics track on the northern side.



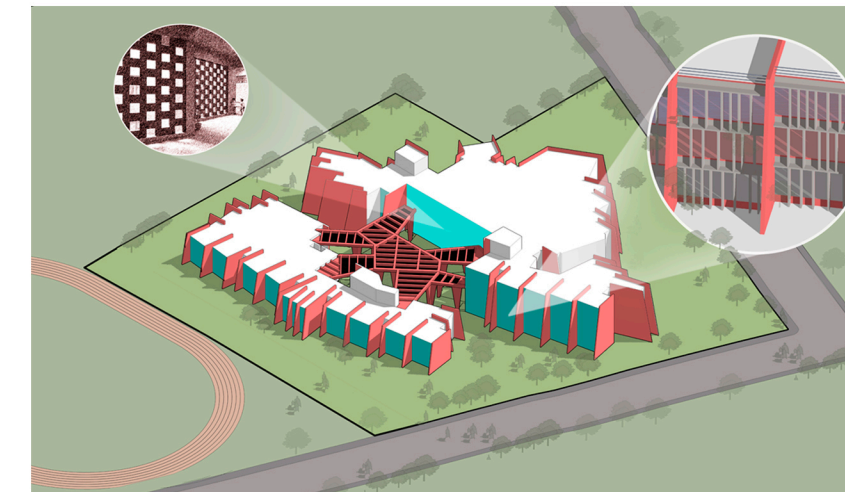
The requirements necessitated a large built volume.



The layout is intentionally fragmented allowing open landscaped spaces to be interspersed with the school's learning spaces.



The entire circulation is through open, naturally ventilated corridors traversing through the built mass.



Angled vertical walls act as sun breakers to reduce heat gain from the east, west and south sides generating cooler internal spaces.