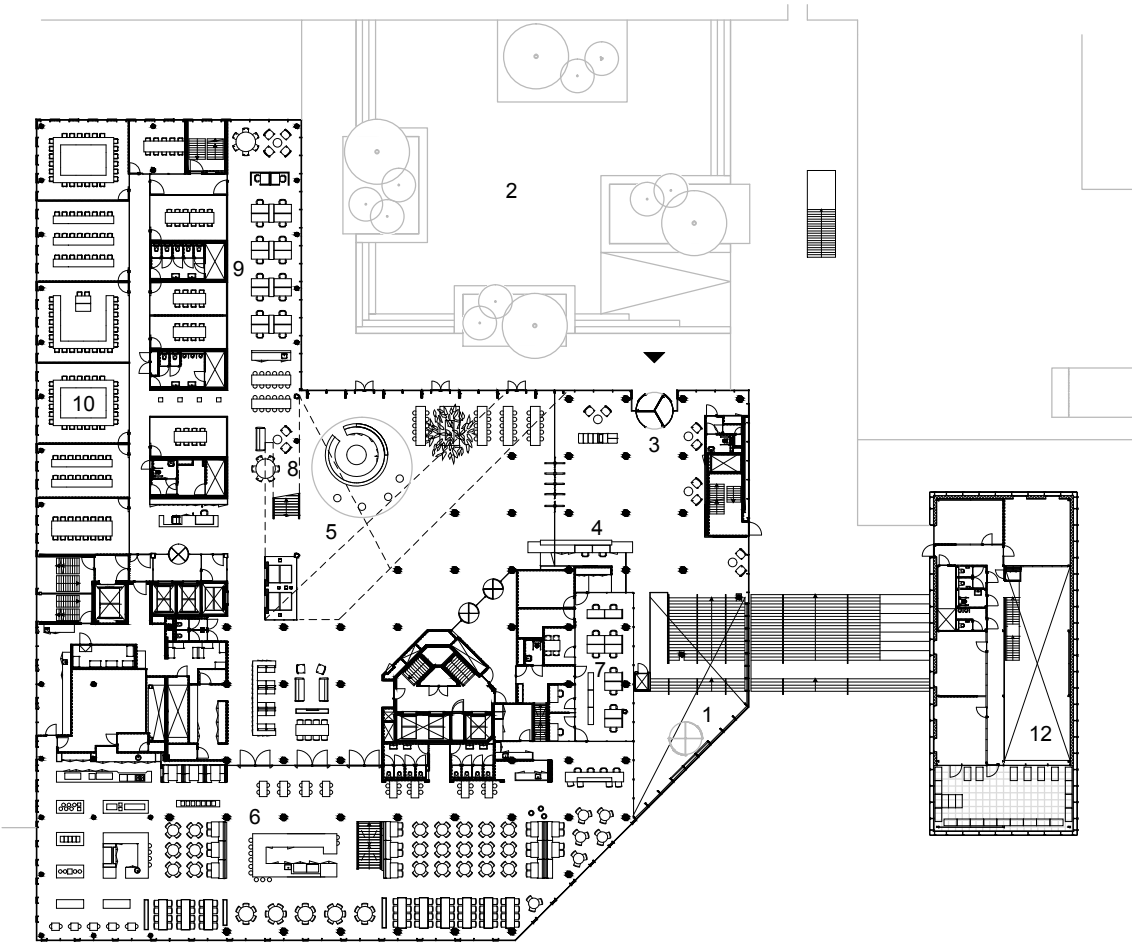
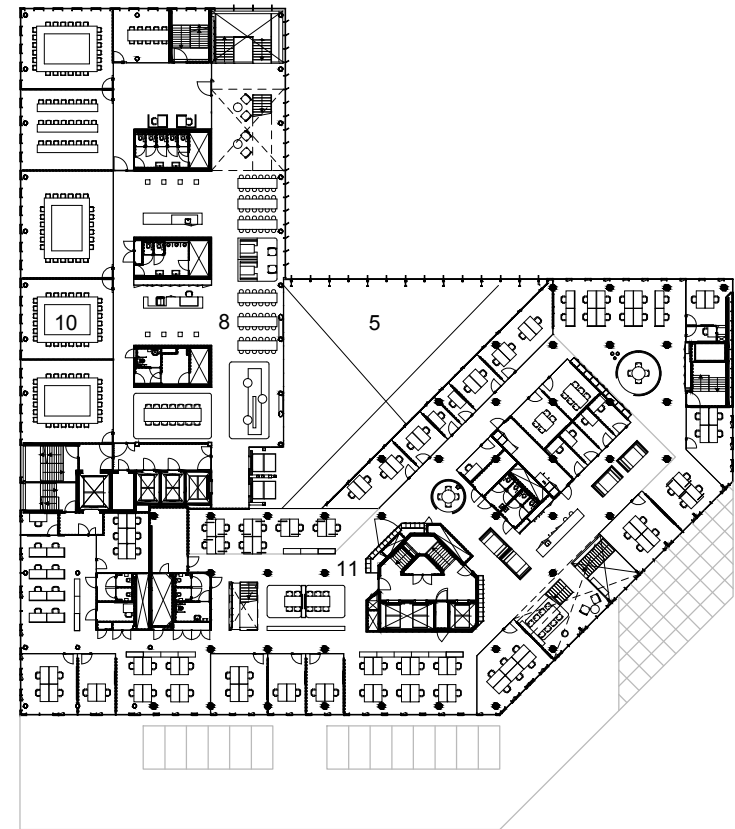


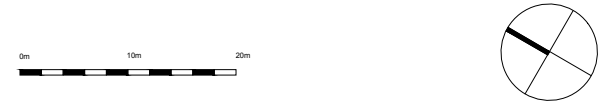
- 1 entrance Croeselaan
- 2 Knoop square
- 3 entrance Knoop square
- 4 reception desk
- 5 central atrium
- 6 restaurant
- 7 service area
- 8 break area
- 9 guest workplaces
- 10 conference room
- 11 office space
- 12 circular pavilion the green house



first floor



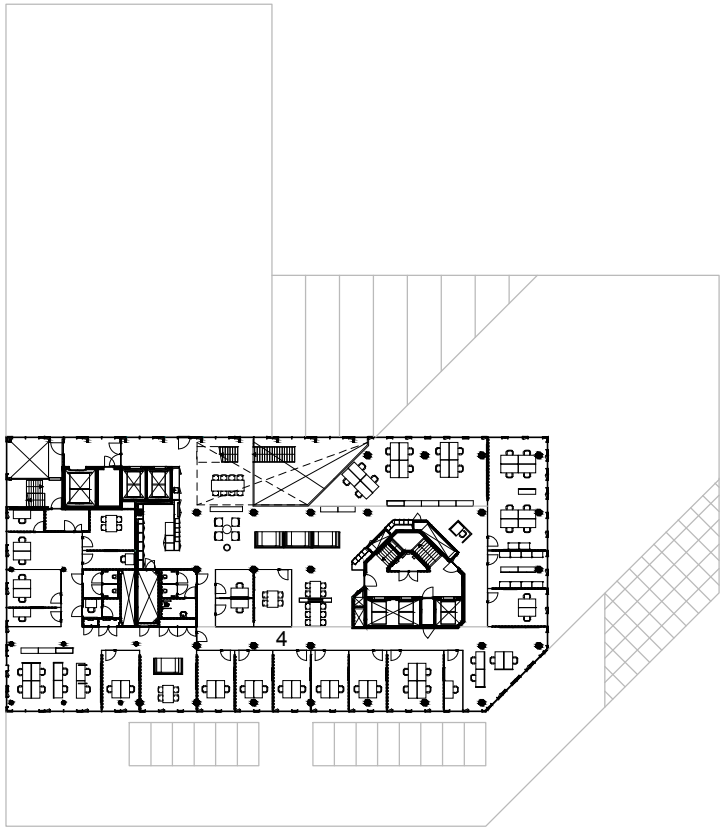
sixth floor



- 1 void
- 2 break area
- 3 conference room
- 4 office area



eighth floor

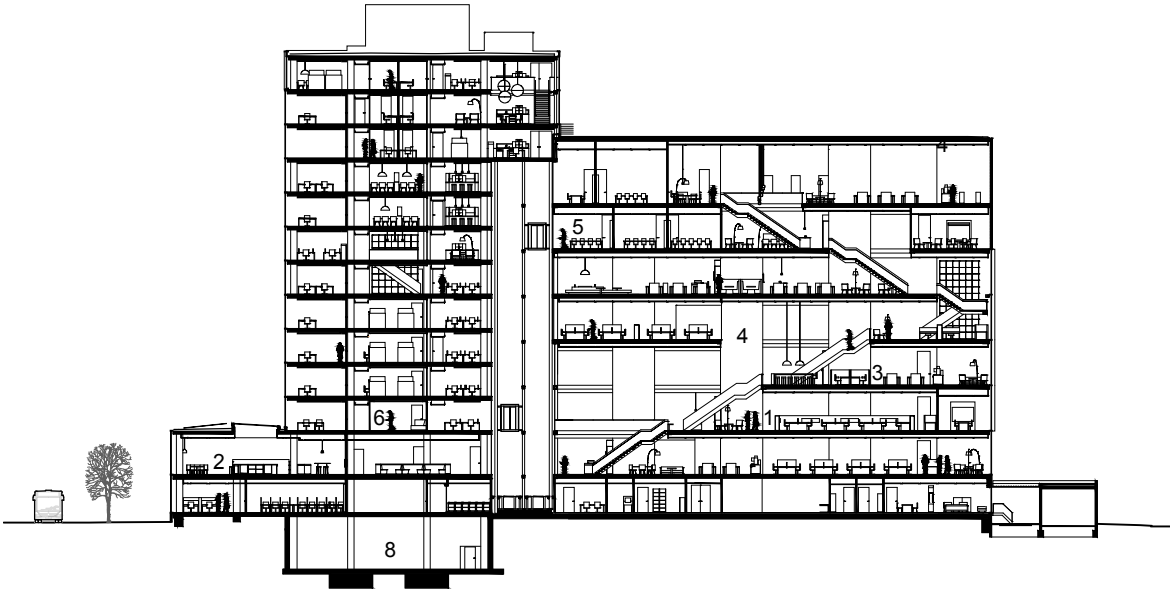


eleventh floor

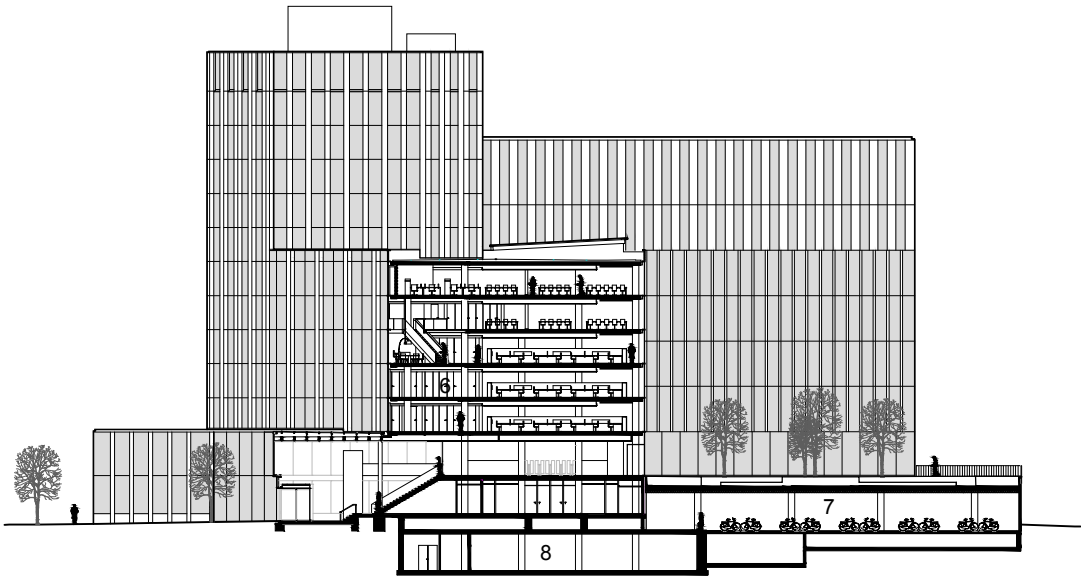


1015 De Knoop
section
1:700

- 1 workplaces guests
- 2 restaurant
- 3 break area
- 4 conference centre
- 5 conference room
- 6 office area
- 7 bicycle storage
- 8 utility basement



cross section

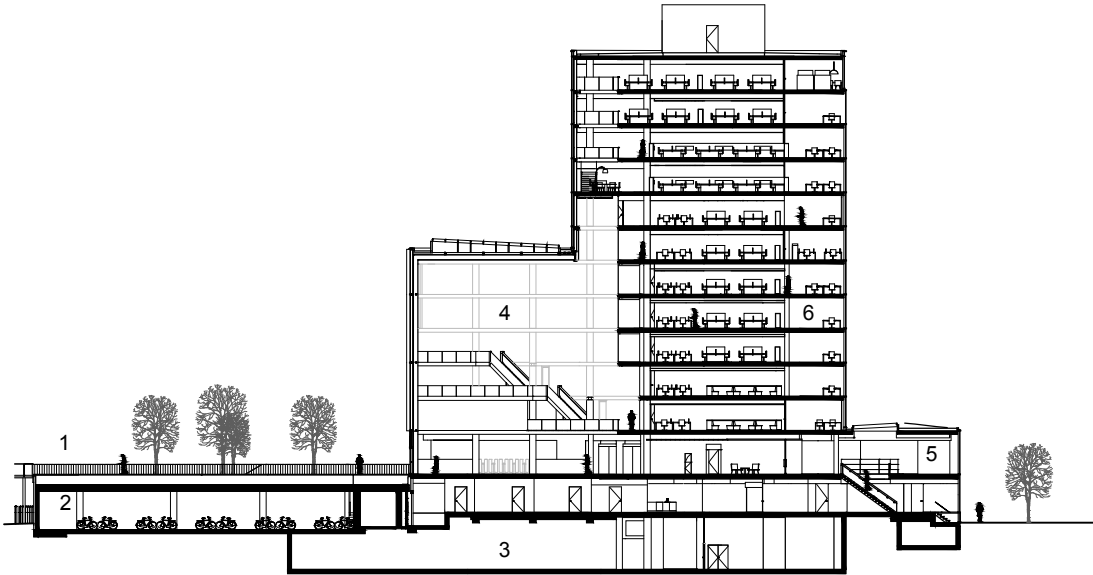


cross section entrances



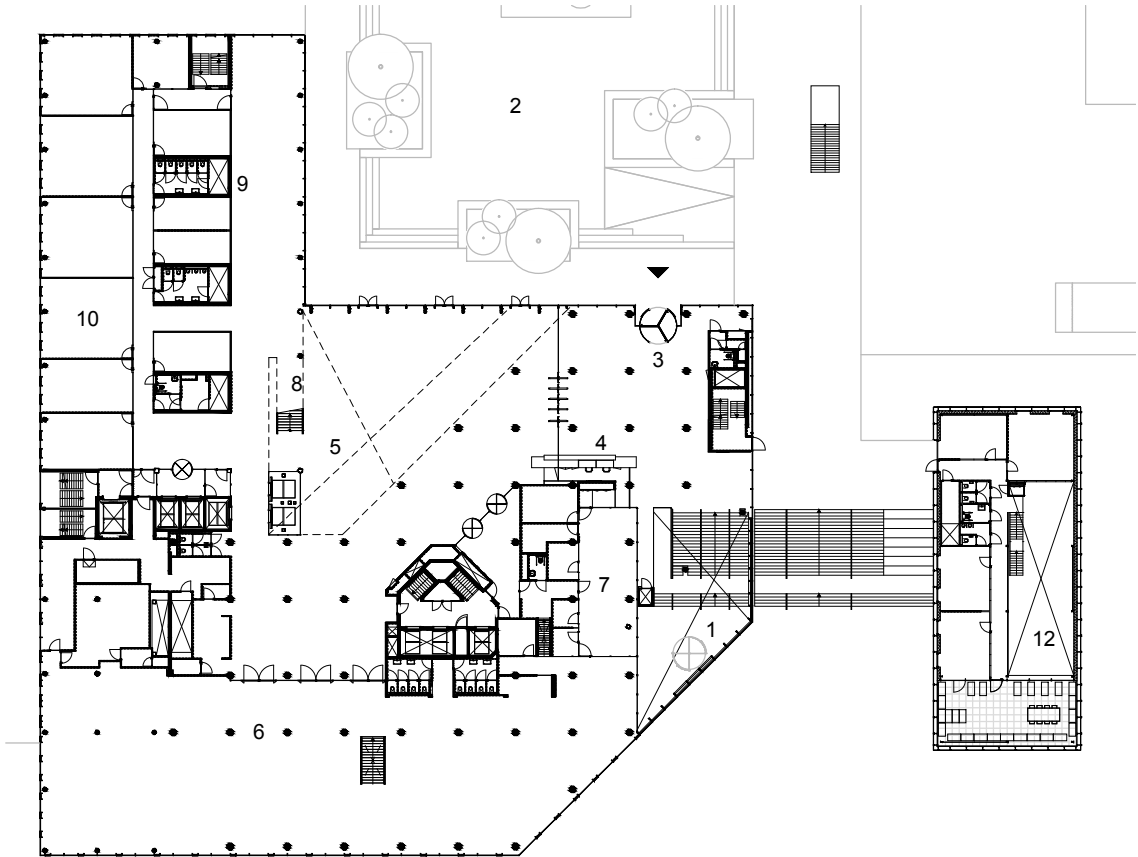
1015 De Knoop
section
1:700

- 1 Knoop square
- 2 bicycle storage
- 3 utility basement
- 4 atrium
- 5 restaurant
- 6 office area

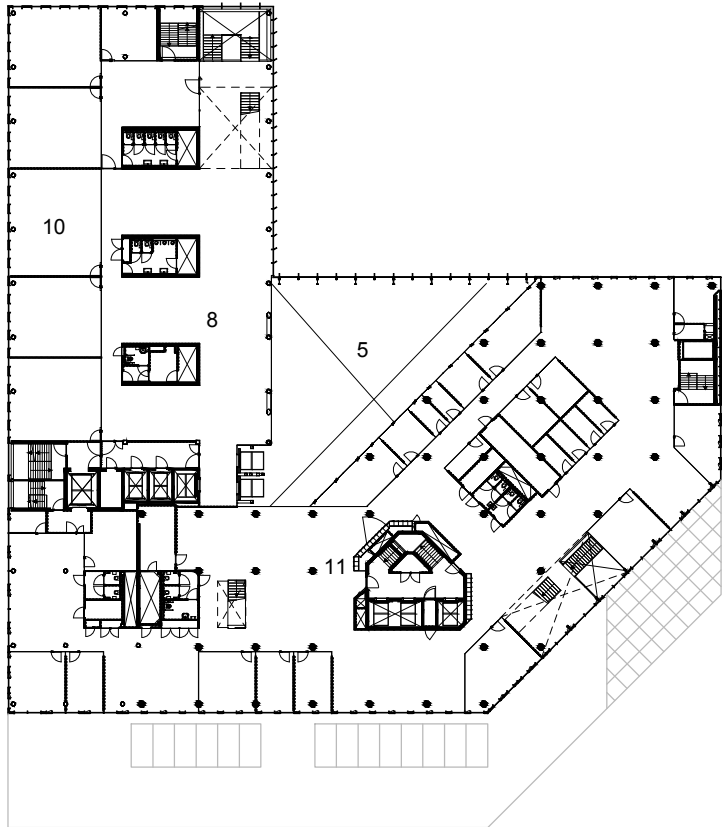


cross section atrium

- 1 entrance Croeselaan
- 2 Knoop square
- 3 entrance Knoop square
- 4 reception desk
- 5 central atrium
- 6 restaurant
- 7 service area
- 8 break area
- 9 guest workplaces
- 10 conference room
- 11 office space
- 12 circular pavilion the green house



first floor



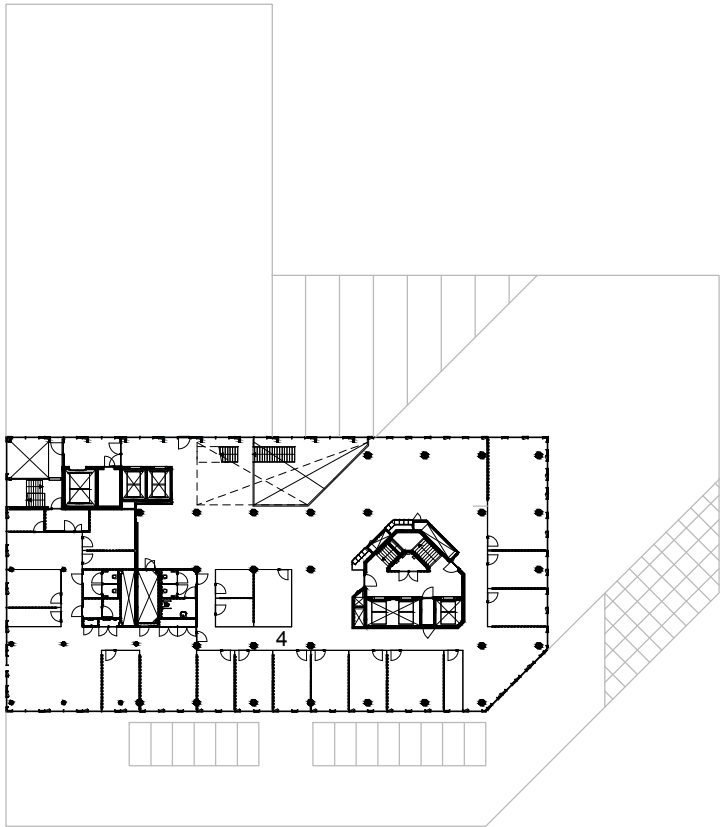
sixth floor



- 1 void
- 2 break area
- 3 conference room
- 4 office area



eighth floor

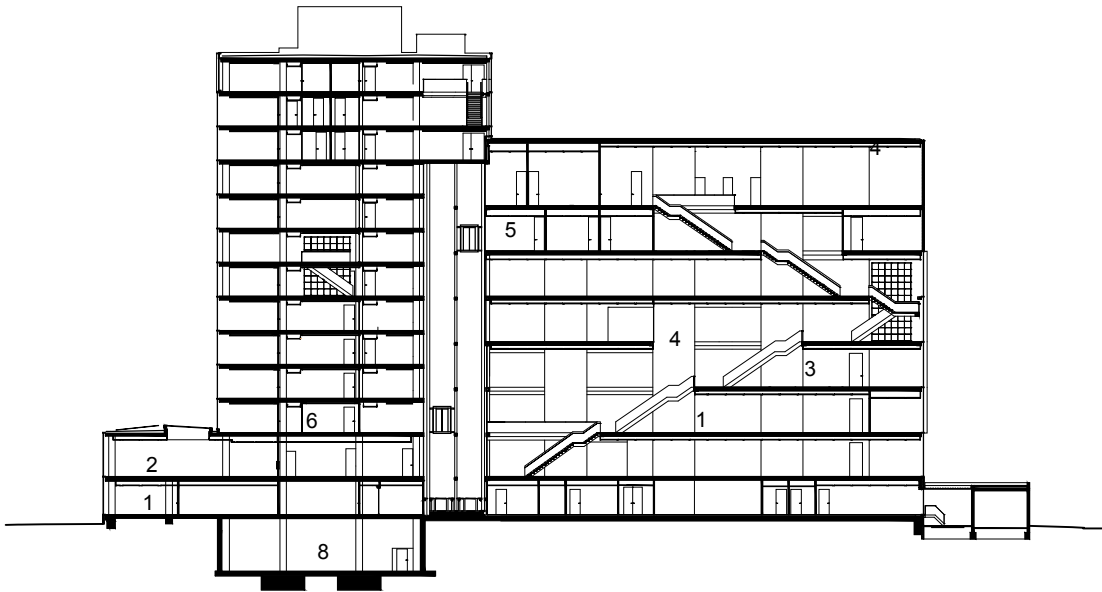


eleventh floor

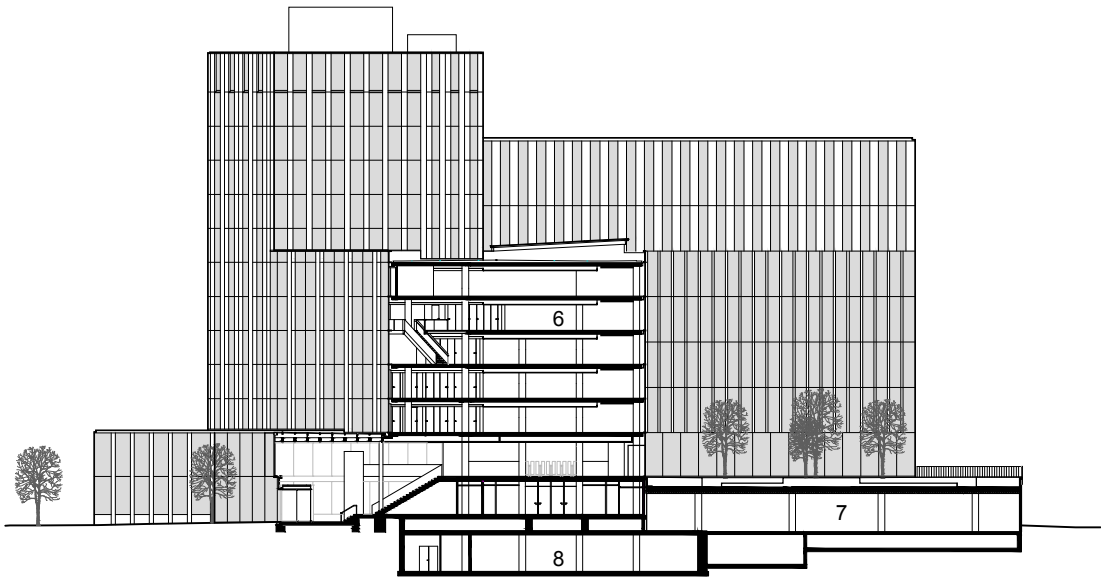


1015 De Knoop
section
1:700

- 1 workplaces guests
- 2 restaurant
- 3 break spot
- 4 conference centre
- 5 conference room
- 6 office area
- 7 bicycle storage
- 8 utility basement



cross section

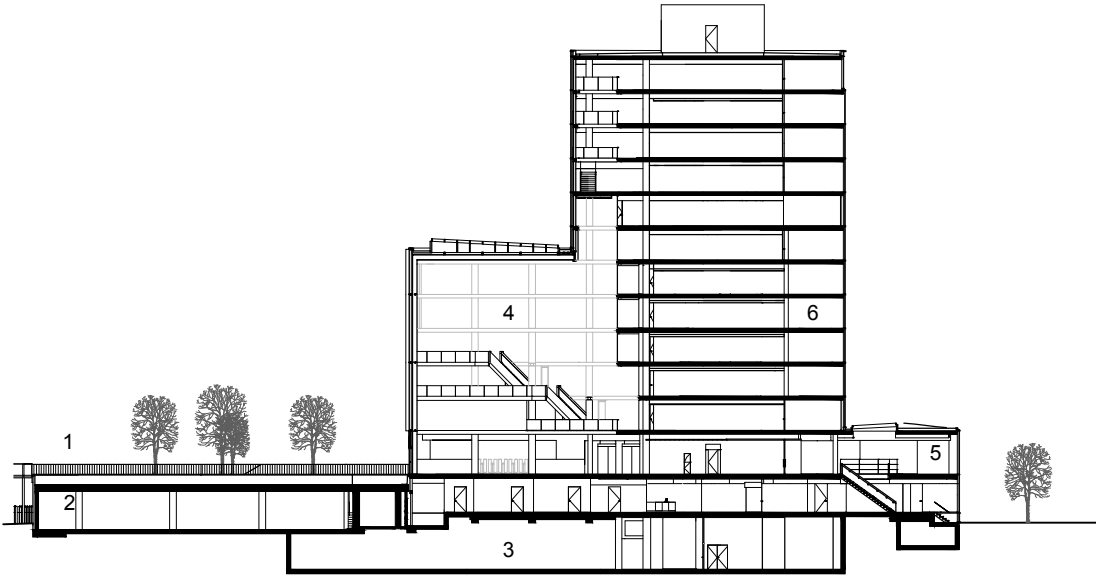


cross section entrances



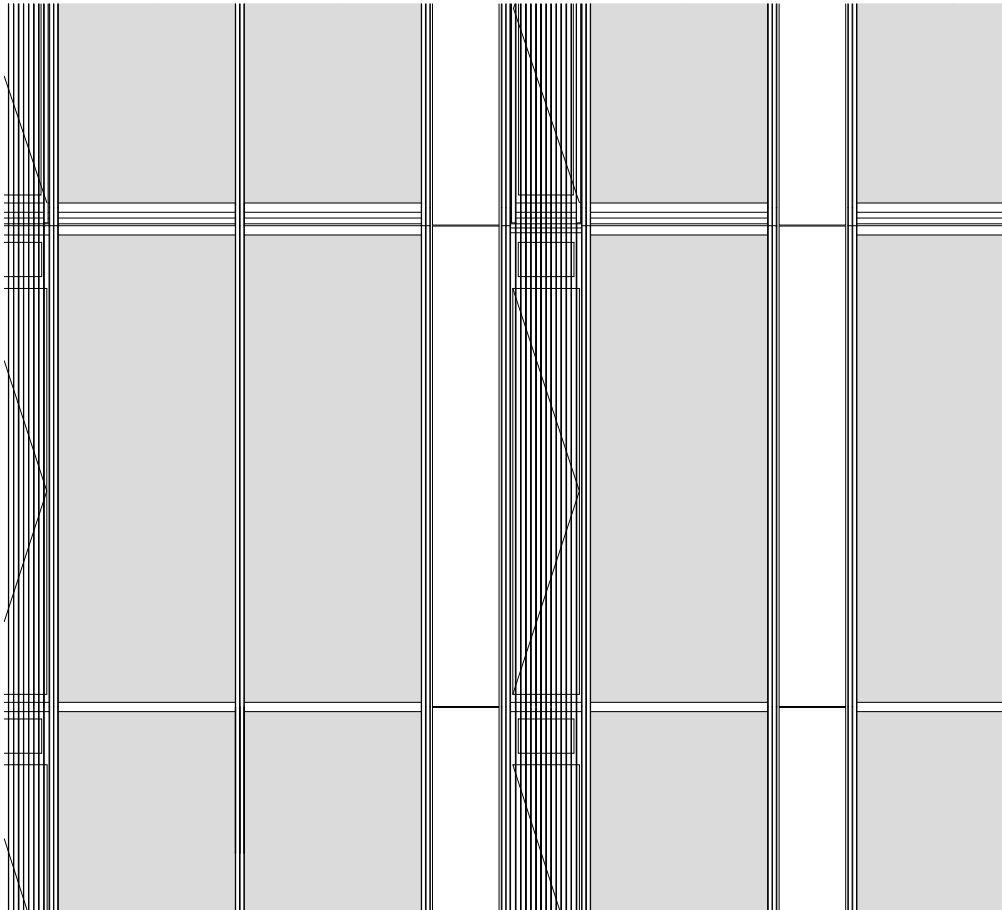
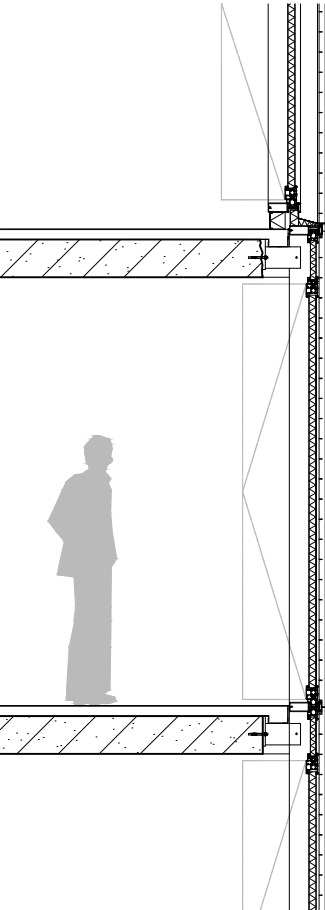
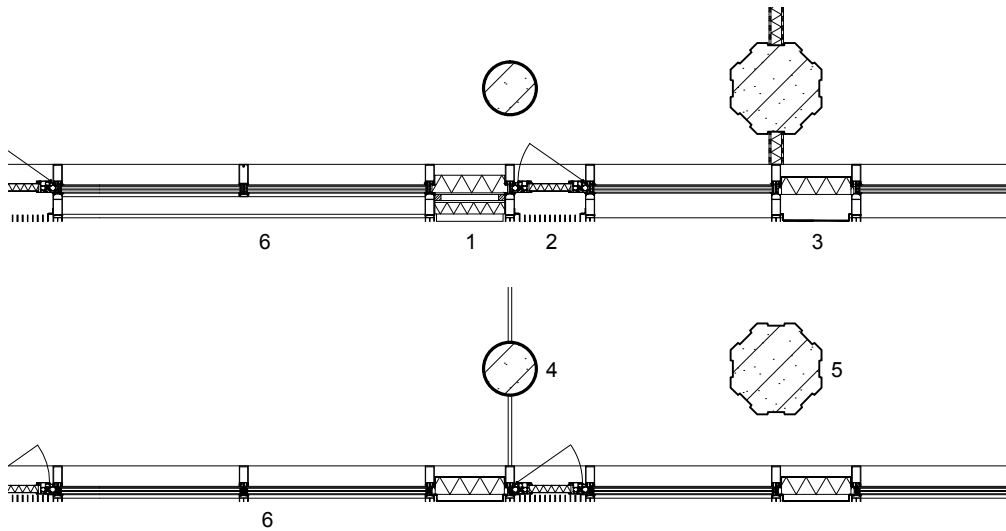
1015 De Knoop
section
1:700

- 1 Knoop square
- 2 bicycle storage
- 3 utility basement
- 4 atrium
- 5 restaurant
- 6 office area



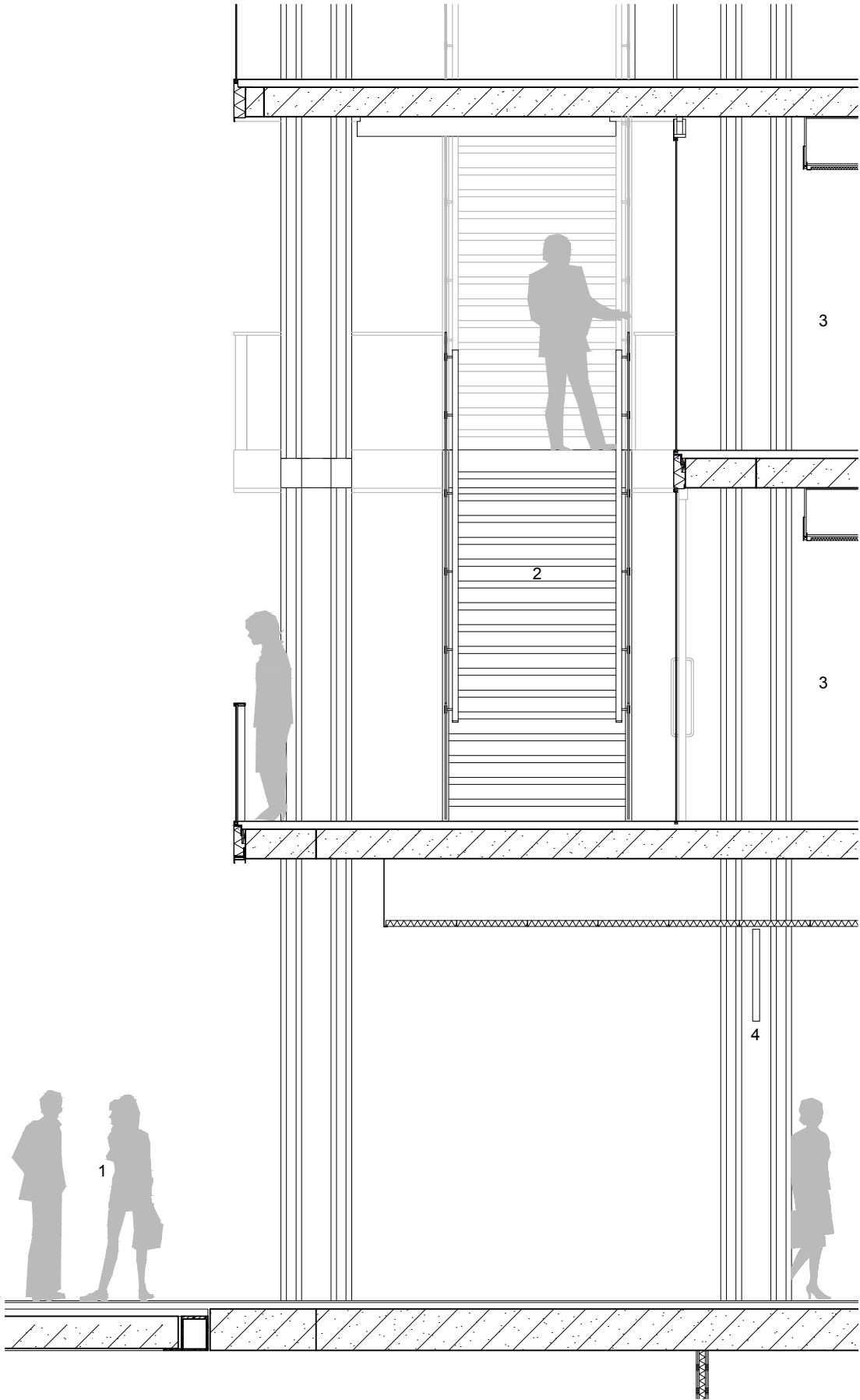
cross section atrium

- 1 steel sandwich panel, insulated with PIR and on the outside covered with folded steel sheet
- 2 steel ventilation door, insulated with PIR and on the outside covered with steel grating
- 3 steel sandwich panel, insulated with PIR and on the outside covered with folded steel sheet
- 4 white steel column, filled with concrete (new)
- 5 octagonal concrete column (old)
- 6 aluminium curtain wall with triple glazing and profiled framework



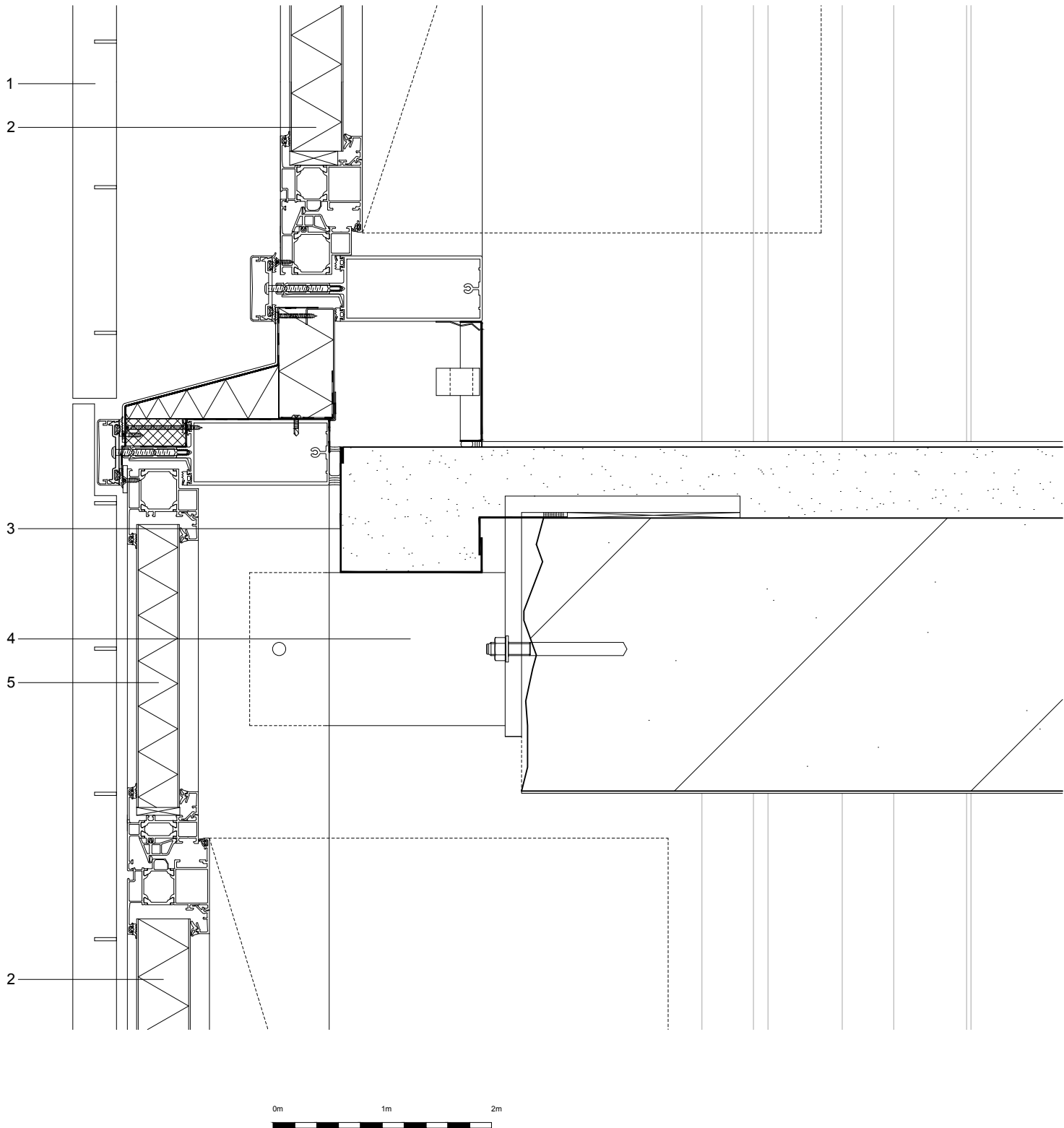
1015 De Knoop
fragment atrium
1:50

- 1 central atrium
- 2 circulation space
- 3 pantry
- 4 light fixture

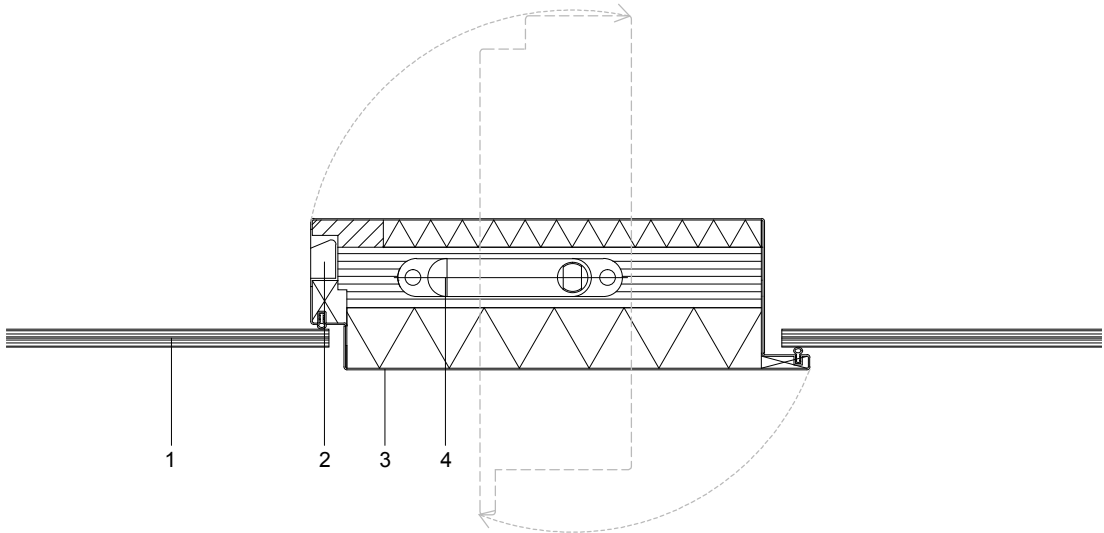


1015 De Knoop
detail setback facade
1:5

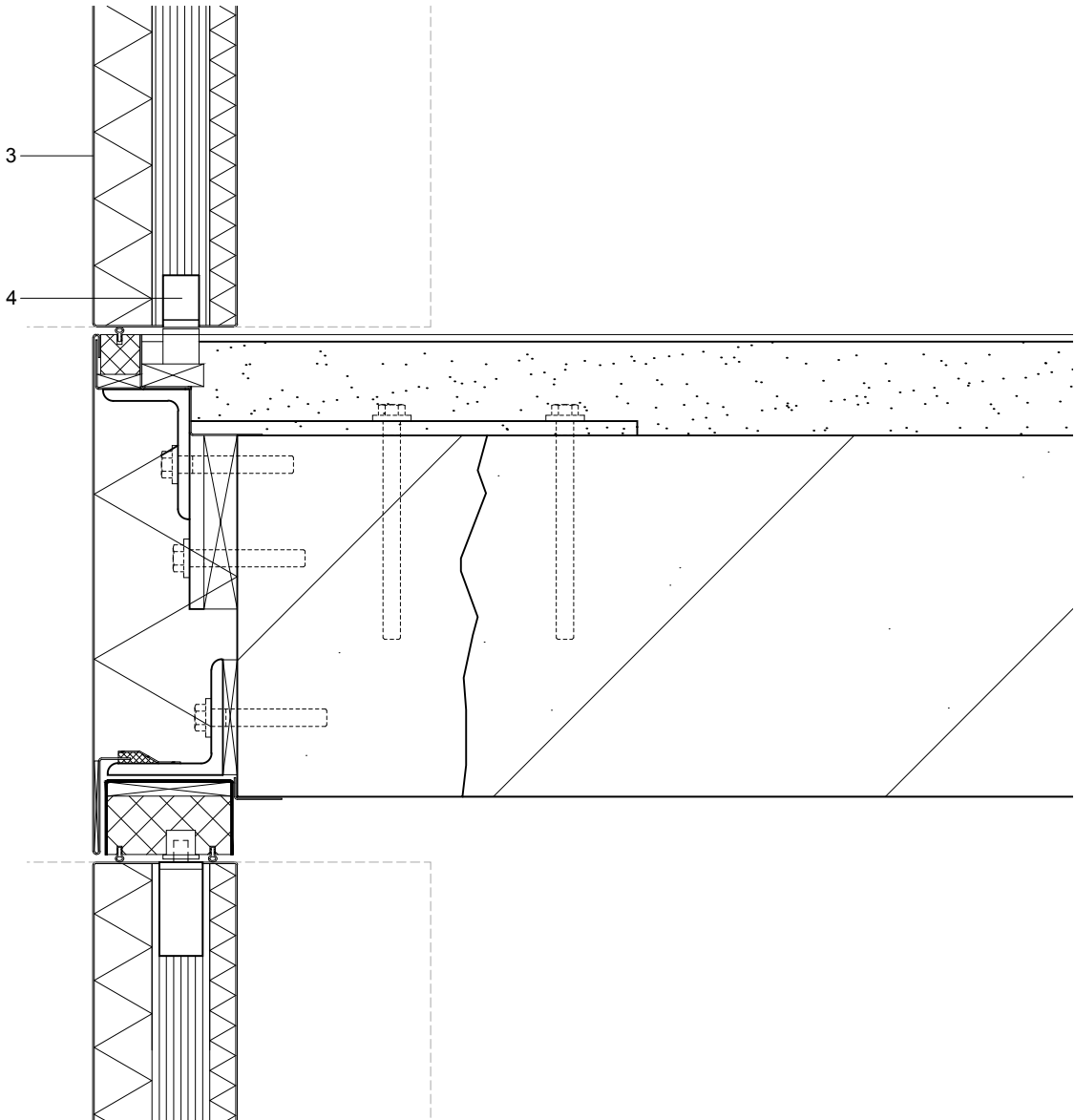
- 1 vertical continuous steel grating
- 2 steel ventilation door, insulated with PIR and opening inwards
- 3 adjustable folded steel sheet between old floor edge and new curtain wall
- 4 anchors, to mount curtain wall to old floor edge
- 5 steel sandwich panel, insulated with PIR and on the outside covered with folded steel sheet



- 1 atrium wall of safety glass
- 2 recessed handle to open ventilation door
- 3 ventilation door of sealed rockwool blankets around a core of 40mm multiplex, finished with perforated folded steel sheet
- 4 pivot hinge, integrated in ventilation door



horizontal section pivoting window



vertical section



1015 De Knoop
detail atrium
1:5

- 1 stainless steel handrail
- 2 balustrade of safety glass with steel baluster
- 3 sound absorbing floor edge, covered with perforated folded steel sheet

