

Mountain and Sea Art Hall

——*Use Chinese Oriental fairy tales to tell the spatial mood*



China is an ancient country attaches great importance to dredging, and its source can be traced back to the mythical story of emperor YU tamed the flood. In China, the modern dredging industry originated in Tianjin. The project is located in the key area of Jizhou, the northernmost part of Tianjin, where has high mountains.

As the core exhibition place of the real estate sales center, the designer transformed it into a different kind of art hall, using the Chinese Oriental fairy tales to tell the spatial artistic conception. Serendipper serves as the soft decoration design to present the eastern temperament.



According to the architecture form, which is an square of inward courtyard. The interior space is divided into the enterprise exhibition hall, negotiation area, sand table exhibition area, children's activity area.

01 Jingwei filled the sea



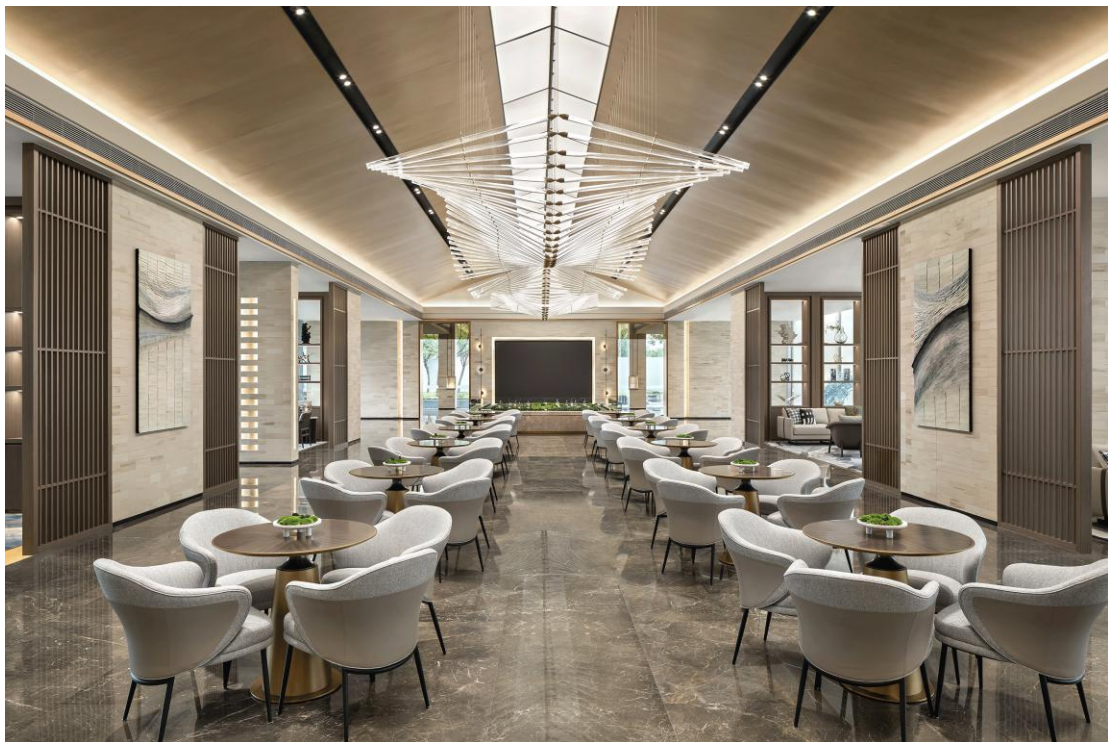
The highlight of the enterprise exhibition hall lies in the sculpture named of the Blue Sea and the story behind it. The inspiration for the design comes from a fairy tale : Jingwei filled the sea. (*Jingwei Filled the Sea* : A little girl died in a shipwreck on the Eastern Sea,

her spirit turned into a beautiful bird, cried sadly in the sound "jinwei, jingwei". That was why people called it "Jingwei". The bird hated the sea so much that Jingwei decided to fill it up. Every day, the brave little bird kept carrying twigs and pebbles from the mountain to the sea without taking a rest. From this fable comes the idiom "The bird Jingwei trying to fill the sea". Chinese use it to describe people who are firm and indomitable and will not stop until they reach their goal.)



This concept is experimental, it expresses the designer's ambition: the device body is a blue sea bench, which unified function and form for viewers to sit; Around the bench, we can see the blue and white gradient, parabolic stacked "twigs and pebbles", it trying to fill the "East Sea" represented by the marble floor. The device and the reflection complement each other and become a complete picture of "Jingwei fills the sea". Coming here, people will stick around and be all attention, full of excitement.

02 Like the Kunpeng diving in the sea



In the center of the lobby of the negotiation area, the design inspiration of the mechanical interactive art device "Future paddle" comes from The Kunpeng fairy tale, like a monster diving in the sea, swimming in the chaos, and thinking of truth. (*The Kunpeng* : It is a half-eagle and half-whale monster living in the North Ocean. It is thousands of meters long , changing shapes, flying high with the wind, could cause a tornado.)



The use of the material language in the space design is full of ingenuity. The installation painting mimics layers of rock at the edge of the sea, piled up like waves in a storm.





In another art installation hanging painting, the overlapping elements of fish scales on the wall form a strong visual impact in the space, making people feel like a small fish swimming in the time river.

03 Emperor YU tamed the flood



On the pillars of the sand table exhibition area, there is a small sculpture which integrates building and boat called “The Growing Gem” was placed. The small volume symbolizes the cohesion of power.



Next to it is a micro landscape installation, which is a short table decorated with wheat representing the harvest. The 3D painting on the walls simulates the shape of the mountains and the sea, implying the geographical changes of Jizhou's terrain, forming the famous standard strata section of the middle and upper Paleozoic dynasties. It is a tribute to the ancestors of Chinese culture and the achievements of emperor Yu in flood control. (*Emperor YU Tamed the Flood* : Yu is the hero of controlling flood. In ancient China, the overrunning flood was mischievous, so the Emperor Yu dredged new river channels as outlets, guiding water to river and river to sea. This not only eliminated the flood, but contributed to the development of agriculture.)



On the right, a historical stone painting of Dunhuang and a wooden conch sculpture with a mortise structure are displayed. Each art installation needs a long time to make. They also represent determination and perseverance to overcome difficulties.





The designer used familiar traditional elements into abstracts, cracks, and transforms to use in collages in indoor elements and become a medium to guide the viewer and space to talk on the spiritual level.

04 The wheel of time and space







The interactive sculpture "Sailing" features a variety of ships. The track of the long voyage, the changing wind and cloud and the fragments of time make people see a three-dimensional picture scroll and feel the magnificent writing of The Times in the coordinates of time and space.



Sitting indoors, you also can view the trees and water in the outer landscape, interact with the nature and feel the light refracted in the space and walls.



Crystal desktop and vase ornaments of the mortise-tenon structure give more blank-leaving imagination and add a sense of flow and vitality.



Two giant “Time wheels” bookshelves stand on the wool carpet in imitation of the blue sky in the children's activity area. This is an area specially designed for children to sit here, play, and have fun, creating a kind of kid-friendly atmosphere, make them feel at easy and enjoy the moment.

This case used color, light, structure, art, and other elements fusion in space creation. Taking the myth of YU tamed the flood, Jingwei fills the sea and The Kunpeng to the

space, and when people walk, stop and communicate in it, they would have a dialogue with the installation art in the space, to feel the beauty of time and space in the form of Mountain and Sea Art Hall.

Project name: Mountain and Sea Art Hall

Design company: Beijing Serendipper Decoration Design Group Co., Ltd

Design scope: Interior furnishings and art devices design

Design principle: Don Lei

Design team: Duan Mingnan, Feng Lili, Fan Yajuan

Project address: Tianjin, China

Project area: 1,240 square meters

Client: Tianjin Zhongjiao Xincheng Construction and Development Co., Ltd

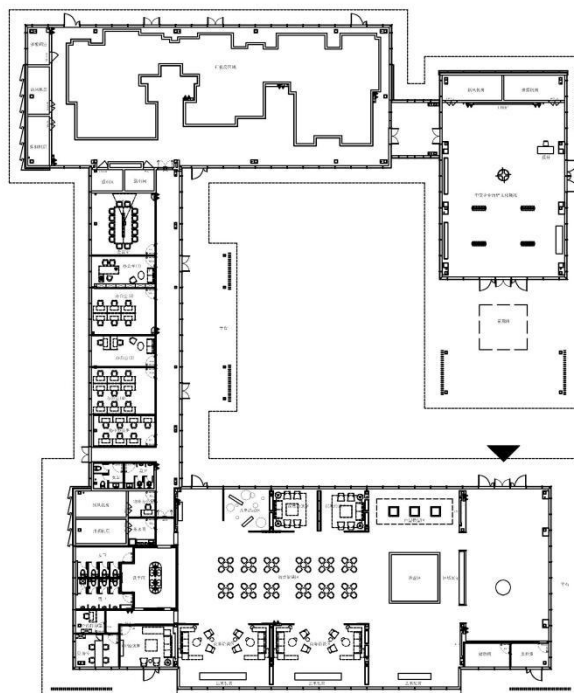
Client member: Yang Zhigang, Li Bo, Yanghai, Luo Xu, Cai Hongye

Architectural Design: Shanghai Tianhua Architectural Design Co., Ltd

Interior design: China Architectural Design and Research Institute Co., Ltd

Photographer: Sean

The Plan



SEREN

DIPPER 赛瑞迪普

Beijing Serendipper Decoration Co., Ltd., is a diversified international design company. Serendipper means the 'treasure hunter' who has sense and insight. Our professional team is committed to hotel clubs, restaurants & bars, high-end residences, model rooms, commercial and office space design and customization of furniture decoration, with cutting-edge international design ideas to enrich the meticulous and rational Oriental aesthetics, to be aesthetic and living space treasure hunters.