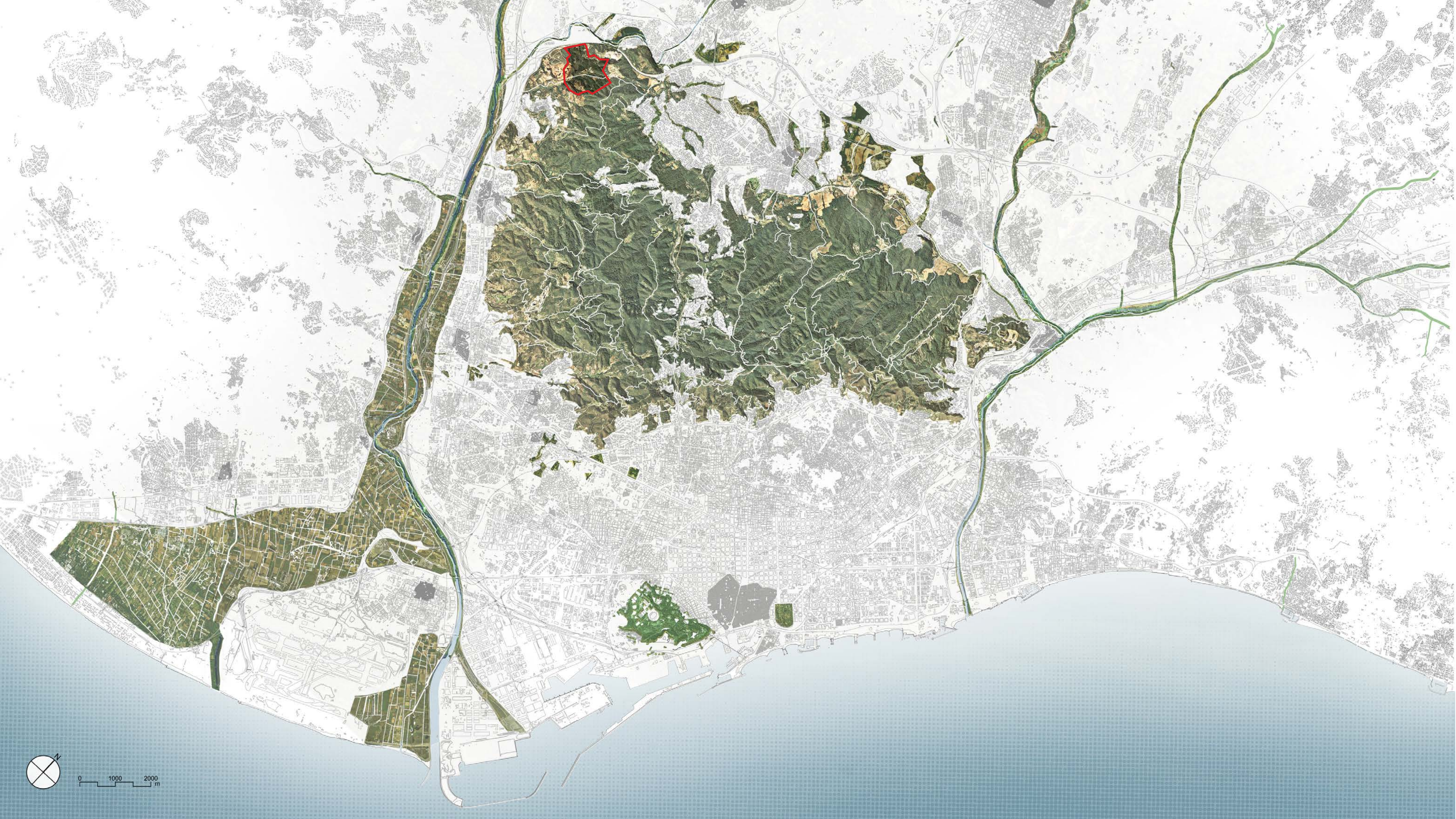


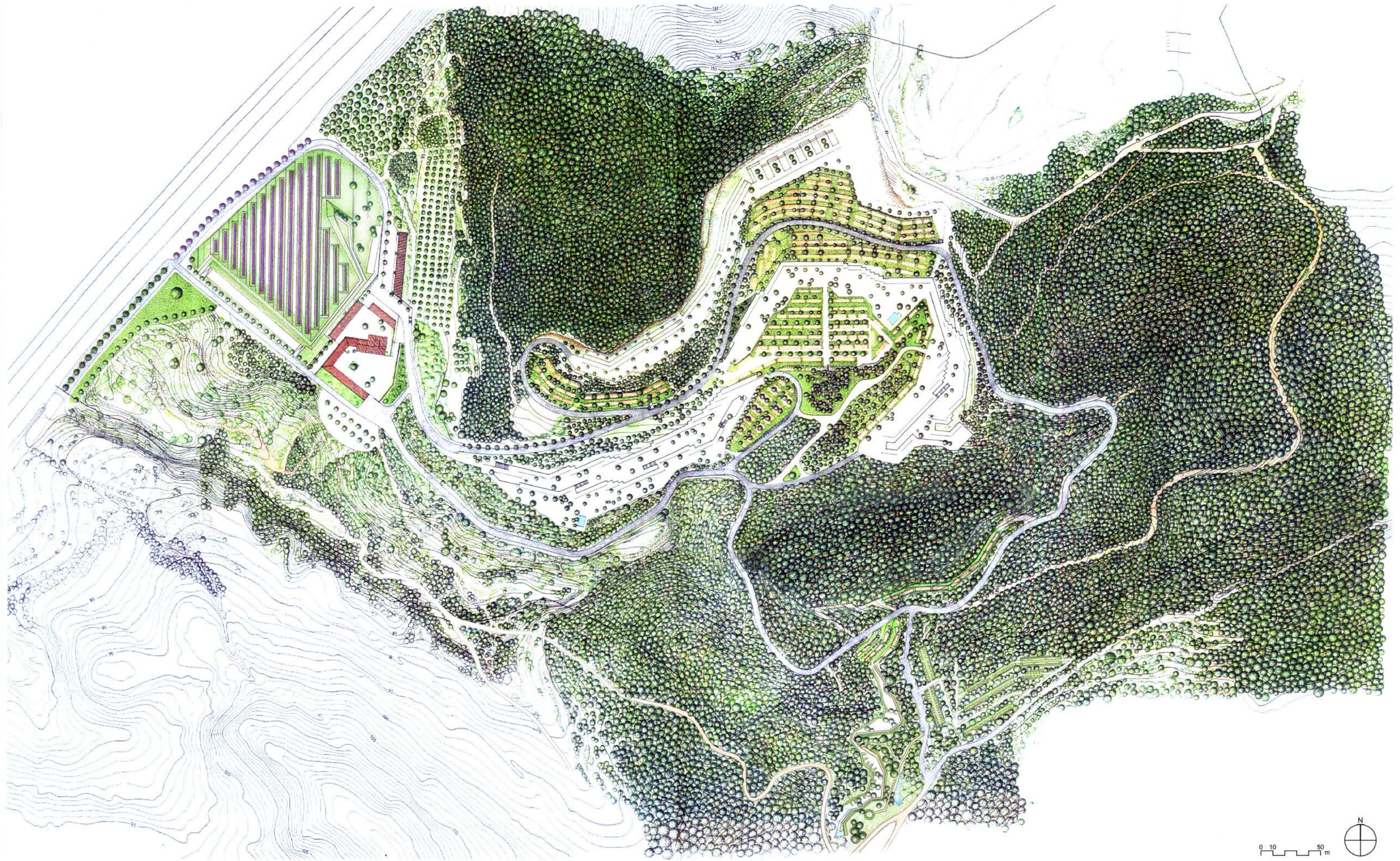
THE FOREST PATH

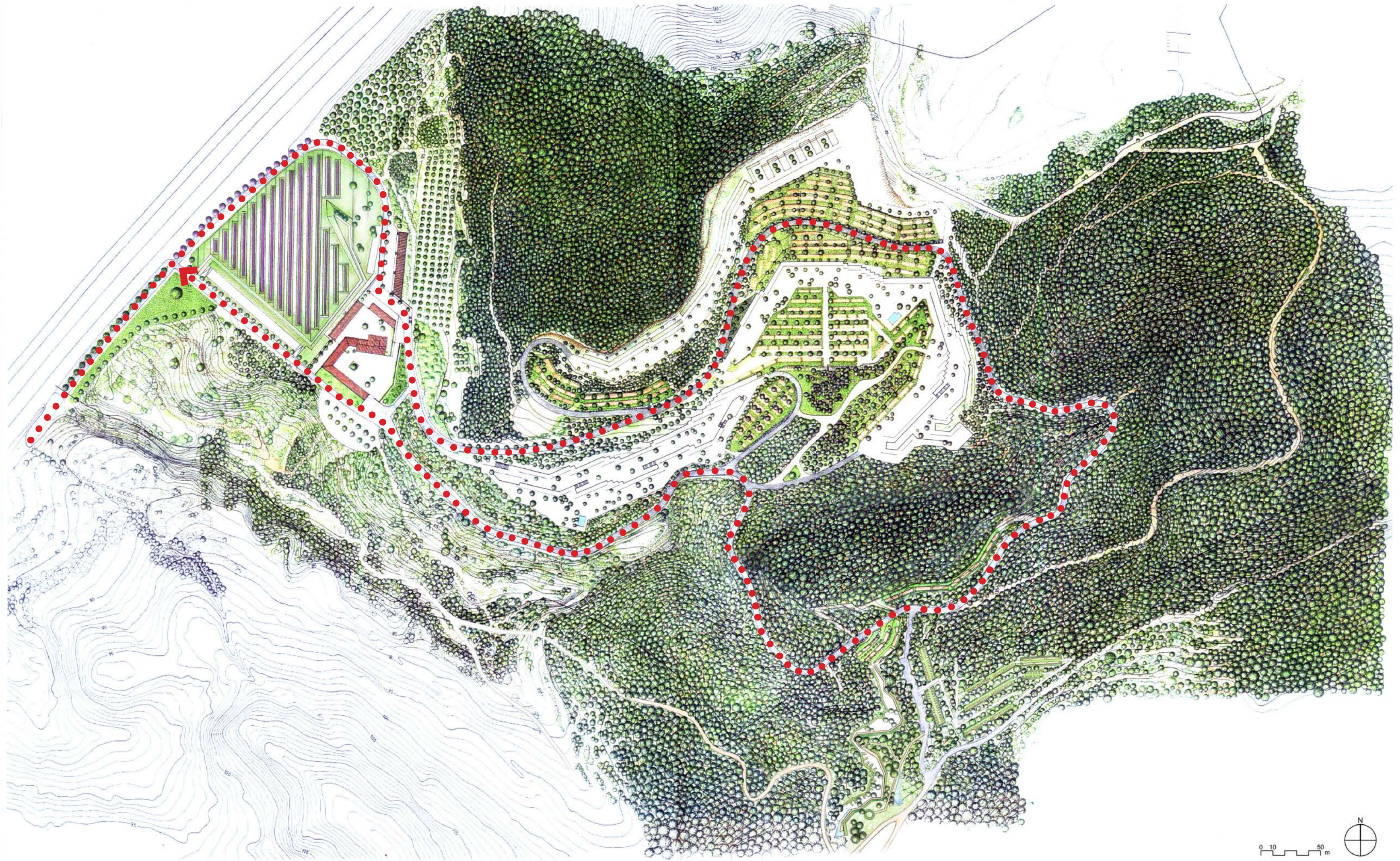
DESIGNING WITH NATURE BASED SOLUTIONS

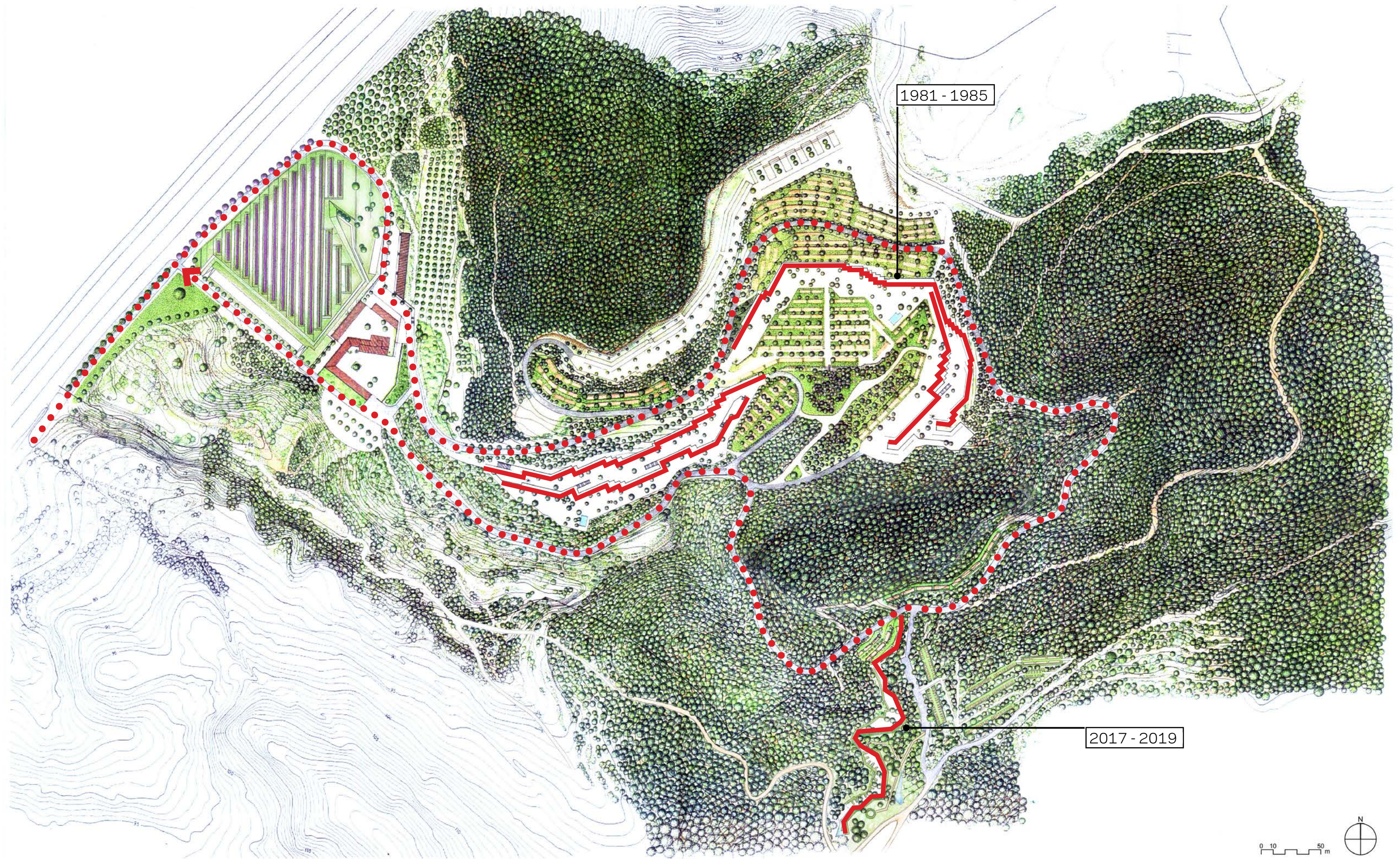


0 1000 2000 m



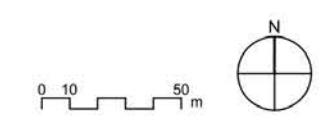






1981 - 1985

2017 - 2019



RESPECTING THE HUMAN-NATURE INTERDEPENDENCE





VERY PRONOUNCED
TOPOGRAPHY



EXEMPLARY PINES
AND HOLM OAKS

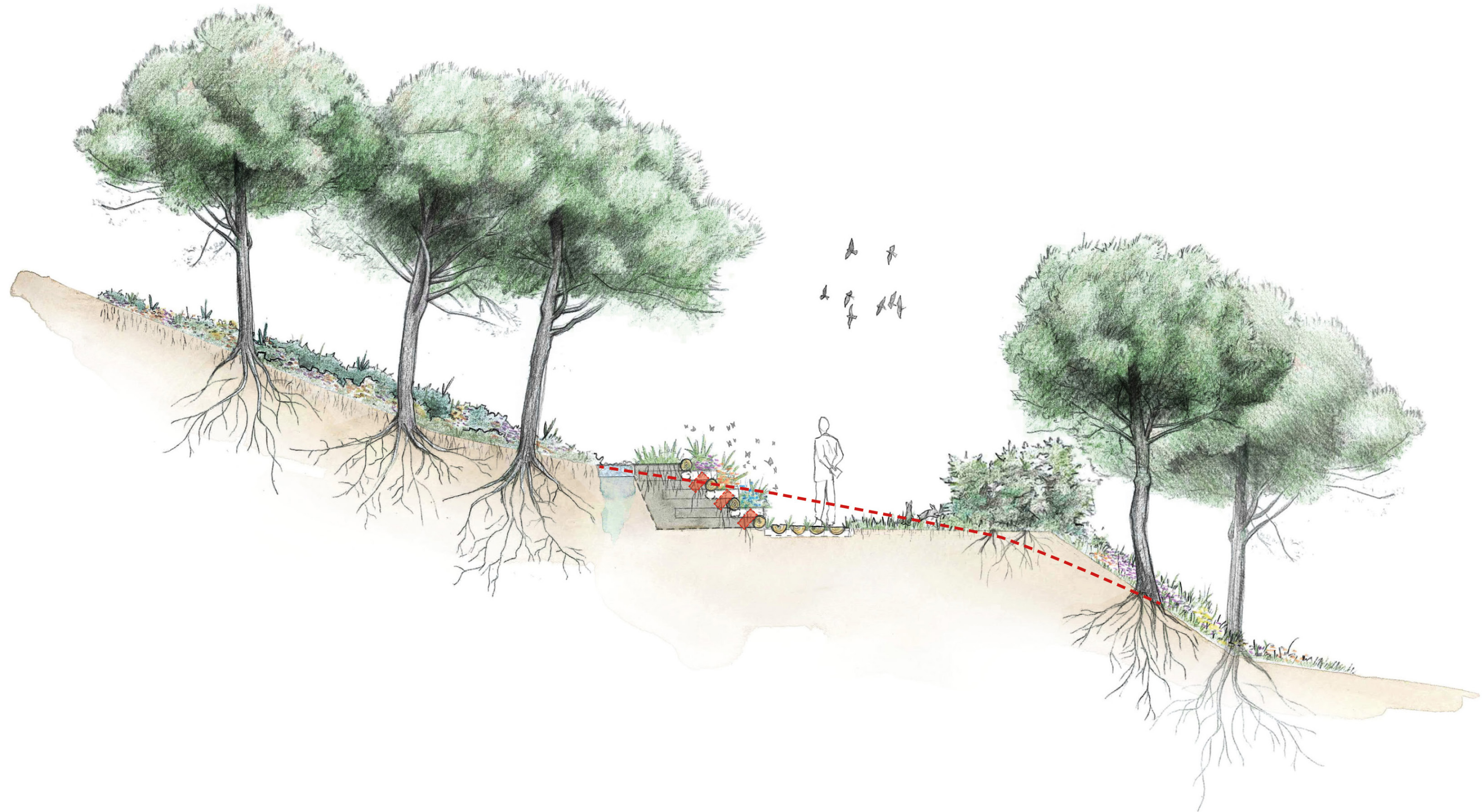


FOREST GLADES

A path that enters the forest accompanied by a green terrace as a reflection of Collserola's agricultural past



A vertical garden based on bioengineering applied to the landscape, as a retaining system to minimize the impact on the existing topography.



A photograph of a construction site. In the foreground, a series of wooden planks are laid out on the ground, forming a walkway. To the right, a foundation is being built using large, dark logs. The logs are stacked in a way that suggests they are being used as a base for a structure. The ground is dirt and gravel. The text "BUILDING WITH NATURE" is overlaid in the center of the image.

BUILDING WITH NATURE

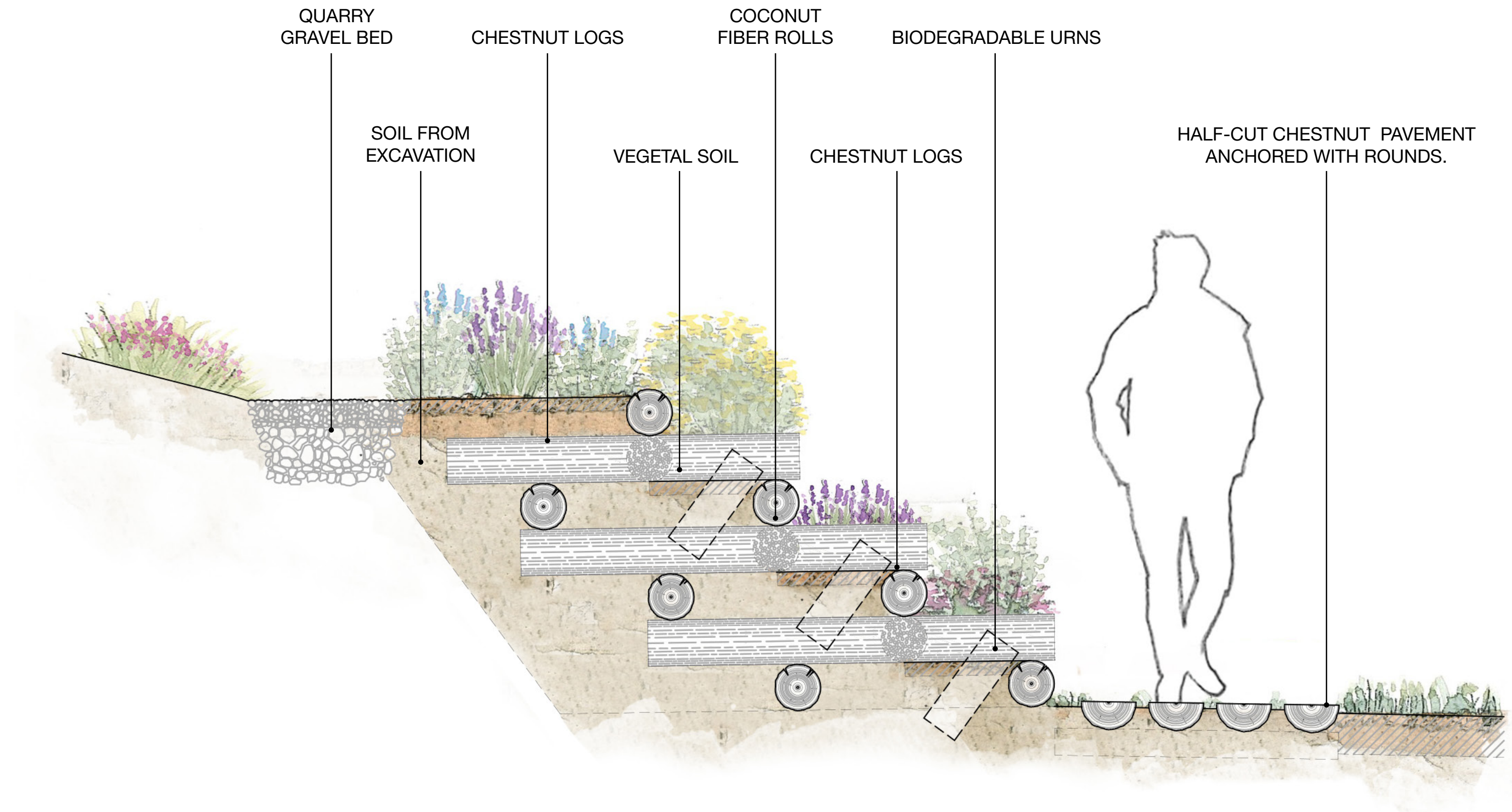
A construction site featuring a large pile of cut logs and several long wooden planks laid out on the ground. The scene is set in a dirt area with some construction equipment visible in the background. The text "THE KRAINER WALL" is overlaid in the center.

THE KRAINER WALL







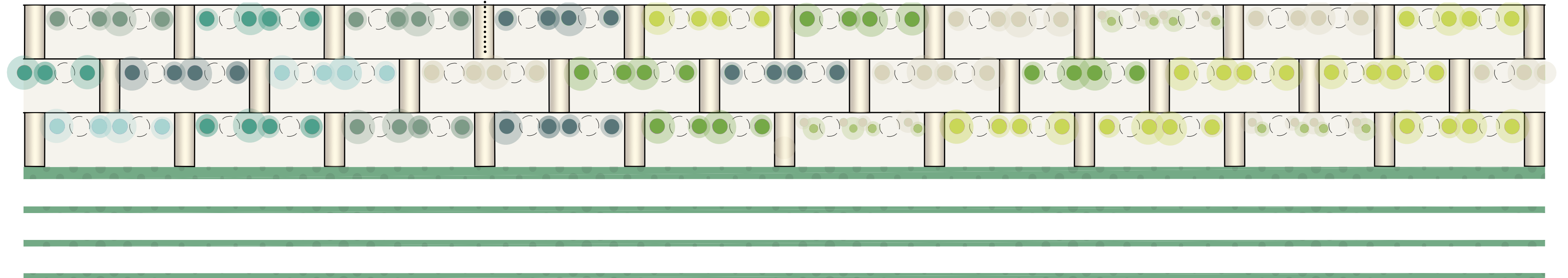
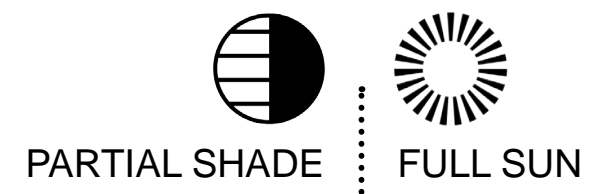
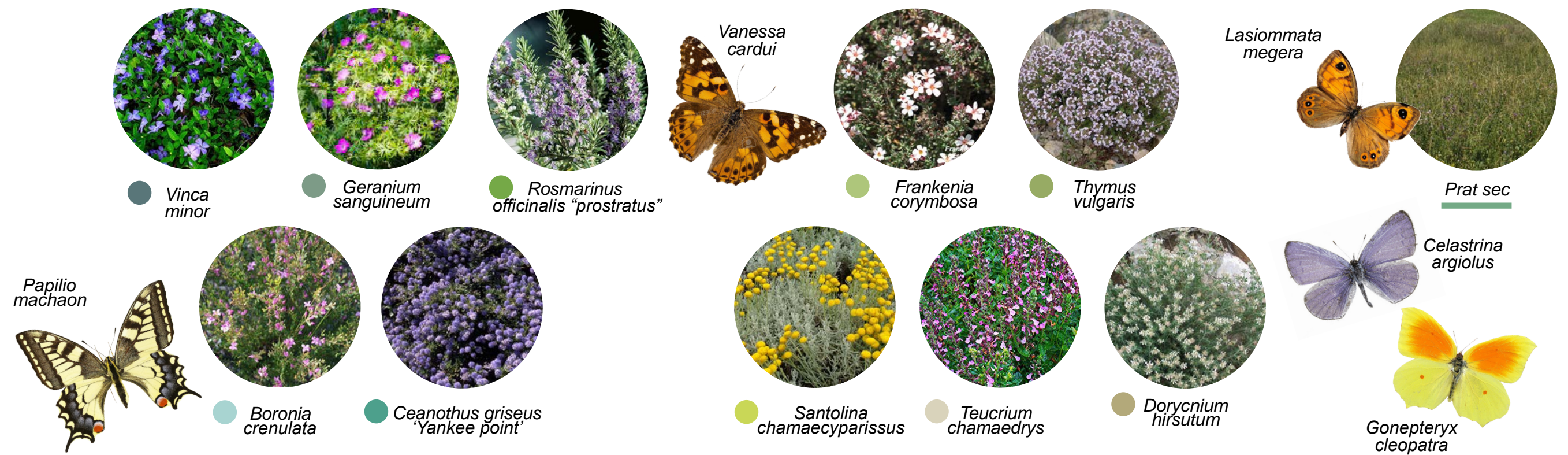


A close-up, top-down view of a dense thicket of green, succulent-like plants with small, rounded leaves. The leaves are covered in numerous small, clear dew droplets, suggesting a moist or early morning environment. In the background, a wooden tree stump is visible, partially obscured by the foliage. The stump has a small, dark, rectangular label with the number '429' and some faint, illegible text below it. The overall scene conveys a sense of natural growth and environmental stewardship.

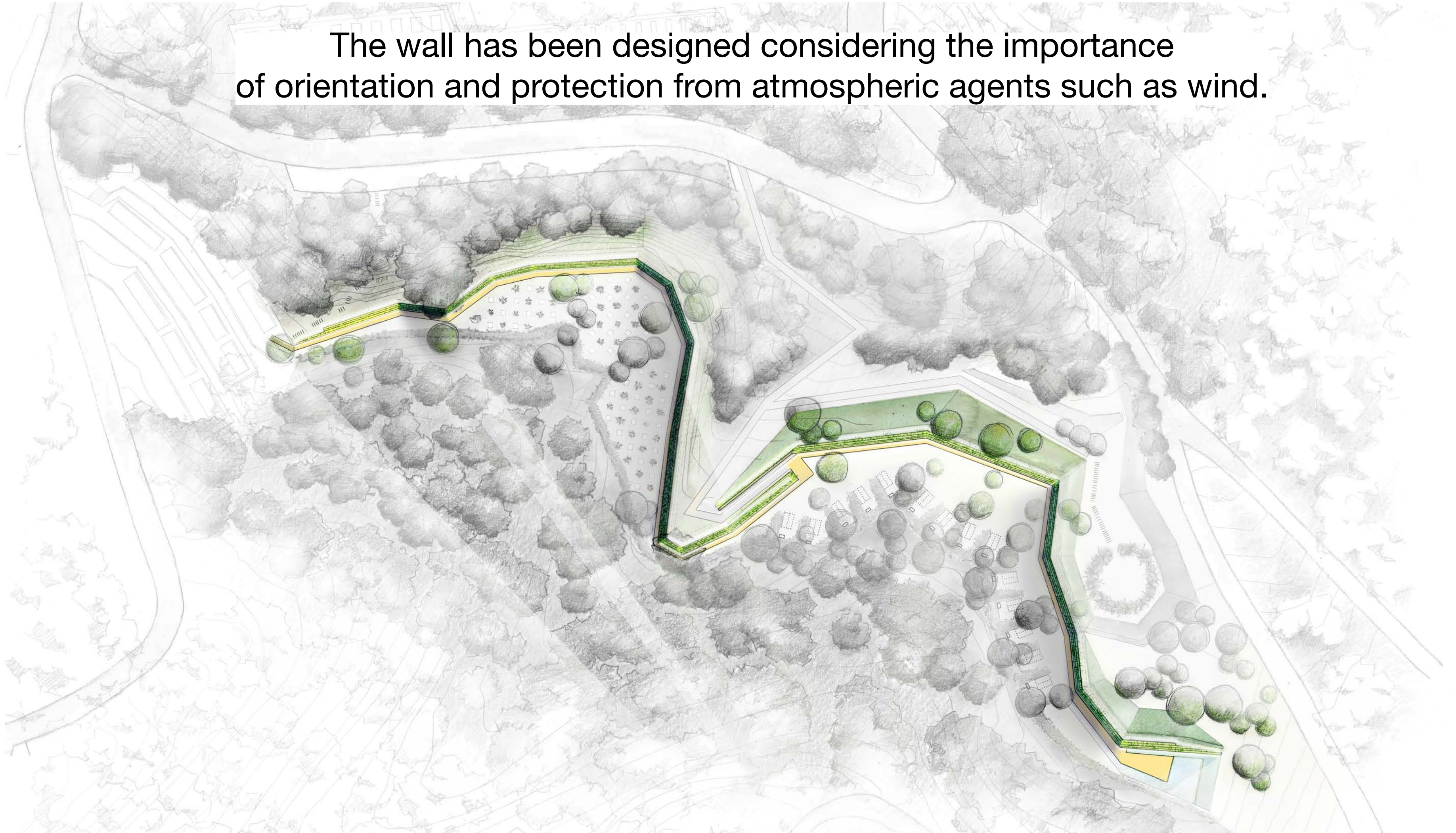
BUILDING FOR NATURE

The background of the image is a dense field of green, oval-shaped leaves, likely from a shrub or groundcover, with small water droplets visible on their surfaces. In the center-right background, a circular wooden sign is partially visible, featuring the number '429' at the top, the text 'ARIA DE' and 'FLO' below it, and the year '1936' at the bottom.

THE BUTTERFLY GARDEN



The wall has been designed considering the importance of orientation and protection from atmospheric agents such as wind.





0



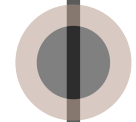


0



3 months





0

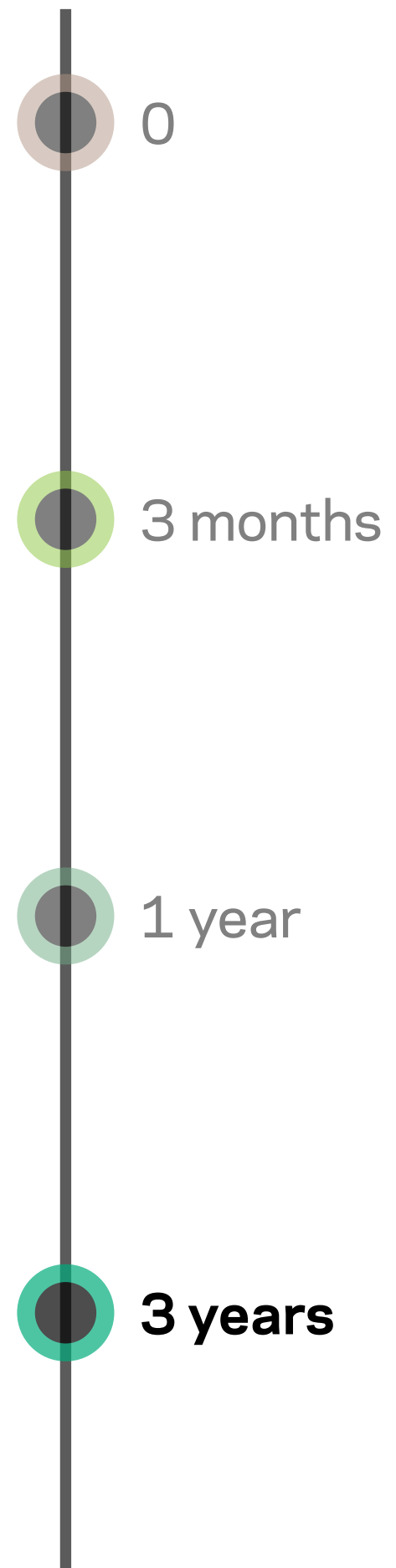


3 months



1 year







A NATURAL DYNAMIC EVOKING THE LIFE CYCLE:
the wall evolves over time, relating the degradation of dead
elements with the roots and the growth of living elements.

*“SI LO PEQUEÑO ES HERMOSO Y
LO GRANDE ES PODEROSO,
HAY QUE HACER QUE LO
HERMOSO SEA PODEROSO”.*

Ramon Folch















BIR

merging city and nature since 1981

BIR
batlleiroig