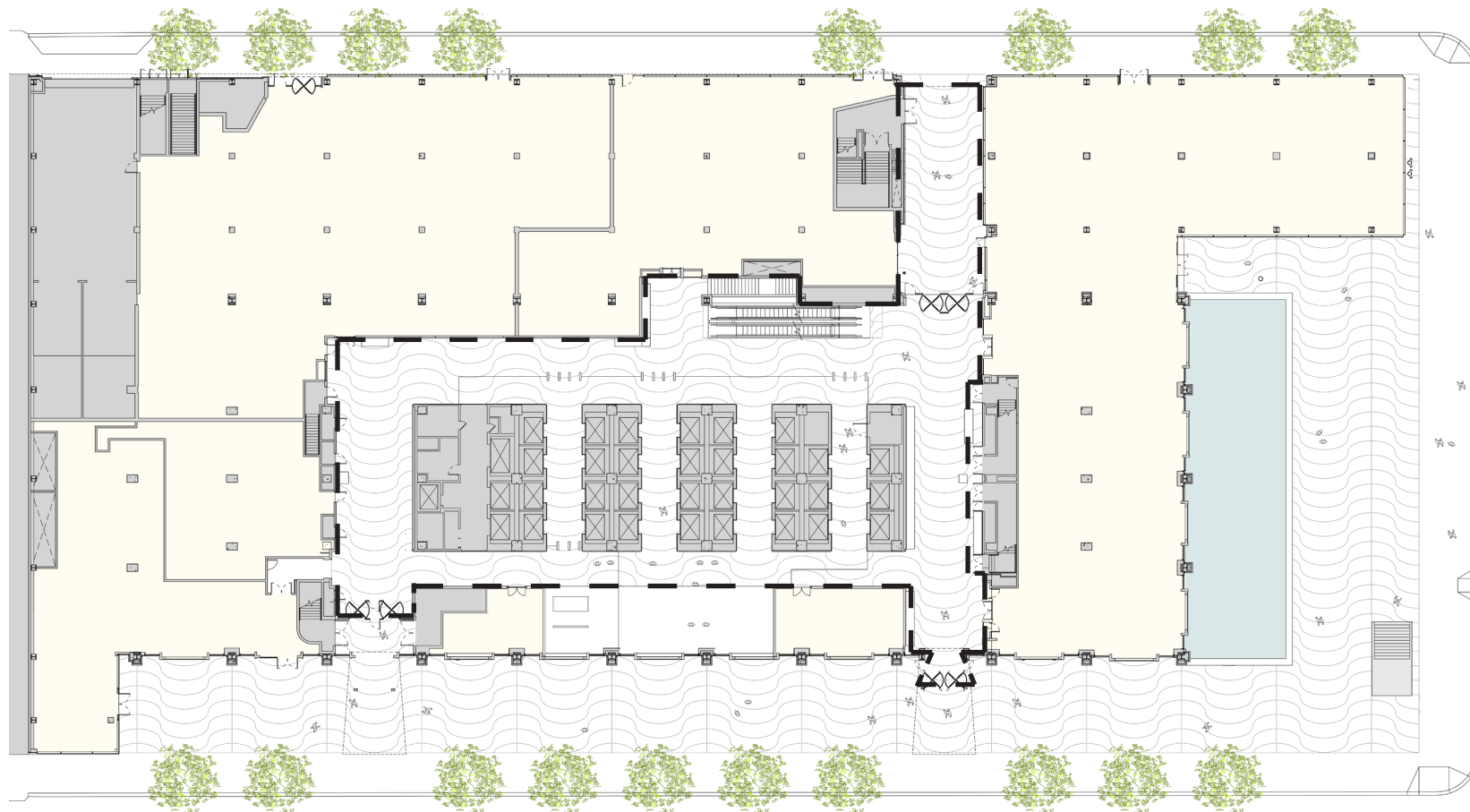


Avenue of the Americas

**AFTER**

- 1** Expanded south lobby
- 2** New reception desks
- 3** Relocated turnstiles
- 4** Reopened breezeway
- 5** Reconfigured plaza
- 6** New stepped landscape feature
- 7** Upgraded subway entrance



**BEFORE**



Extent of interior landmark designation