

# SHREE TOWN

## CHATTISGARH | INDIA

### LOCATION



### SITE WITH RESPECT TO ITS SURROUNDINGS

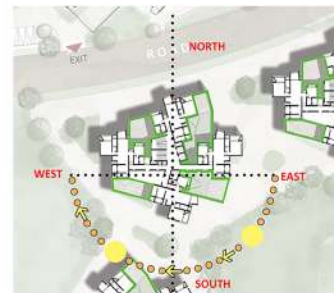


Part of a masterplan of a 36-acre self-sufficient housing project being developed for the personnel of a cement plant, this project is located 3-km from the closest small city amidst open land all around with no other development in the vicinity.

A large open landscaped park punctuates the overall masterplan with studio apartments, smaller & larger apartments, a school & a club along the perimeter of the site. Within an area of 6 acres, midrise buildings housing studio apartments, 2 bedroom apartment & 3 bedroom apartments are planned in an organic layout. Each building is designed with sheltered open courtyards naturally ventilated circulation spaces & garden spaces between them.



MASTER LAYOUT



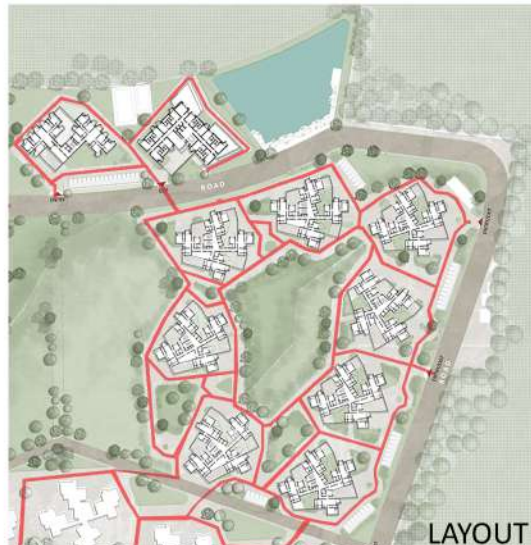
MORNING



EVENING

The buildings are closely spaced in groups to create shadowed spaces in between that are sheltered from direct sunlight and remain cool allowing people to use the outdoor spaces in the hot climate.

### CONCEPT



LAYOUT

### ORGANIC LAYOUT OF TRADITIONAL INDIAN CITIES

Taking cues from the organic housing layouts of old Indian cities & villages, this housing project has an informal layout. Since the overall layout is planned with a large 36,000 sq.m.garden, the apartment buildings are designed to create intimate sheltered spaces between them. These spaces are varied in each part of the layout by the organic nature of the building placement, creating multiple spaces with varying degrees of enclosure & shape.



Color plays an important role in the project. Different color combinations identify the different building typologies within the housing. Vibrant colors are an integral part of traditional festivals, clothing, ornaments, housing & food in India. Colourful hues accentuate the buildings & their circulation spaces. The internal spaces of each home is in neutral colors allowing the occupants to have their own choices.