

## contempo

location: kwun tong, hong kong  
scope: bespoke office interiors  
size: 8,900 s.f.  
completed: march, 2022  
photographers: kenneth chao, tan hai han, frank leung

media contacts  
nicole koo | [nicole@via-arc.com](mailto:nicole@via-arc.com) | +852 2835 9088  
cyrus ng | [cyrus@via-arc.com](mailto:cyrus@via-arc.com) | +852 2835 9083

via  
architecture  
limited

via.



## contempo

Housed in a New York-style brick building, **Contempo** is the design office of **via**. The studio has transformed a former industrial space into a hybrid work and creative environment spanning nearly 10,000 sqft over two floors.

Designed to promote a sense of community and inspire ingenuity, the office merges versatile and fluid work zones with myriad social spaces, drawing on an inventive palette and understated colors to impart a relaxed, cohesive ambience.

The main workspace is arranged on the lower floor, framed by galvanized steel partitions, and where an emphasis is placed on creating a balance between physical and desktop experiences. To facilitate varying work flows and team dynamics, solo work stations are coupled with smaller break-out areas and workshopping tables to encourage interdisciplinary collaboration, an approach that is deeply rooted in the studio's holistic culture.

A long corridor separates other work functions on the lower floor - such as a private meeting space - and visually connects the all-inclusive material library at the back, to the lush outdoor terrace. Alongside the green views, the light-filled café is a place for staff to forge closer connections, or to unwind and disengage from work, combining a relaxed lounge and a spacious common area where a dynamic set-up accommodates all informal exchanges, dining, seminars – or even film screenings. The barista-style bar is constructed from three-meter-long travertine, creating a visual anchor for the space while adding tactility.

The two studio floors are linked by a feature staircase, lined entirely in warm Scandinavian timber and crafted with a double-layered, angular balustrade. Contempo's upper level is a multi-purpose gallery and event space. Conceived as an extension of the workspace to showcase the team's artistic talents and to welcome creative partnerships, the gallery houses commissioned artworks alongside sculptural pieces and furniture designs. Internal swing and sliding doors flexibly turn the space into a standalone venue for exhibitions or intimate dinners – free from the distractions of other work areas. Another highlight is a striking retail display showcasing the range of lifestyle goods developed by the studio's artistic arm, one k edition, set in the corner of the gallery with textured green walls and terrazzo floor.

All fixed inventory within the office was designed in-house, from walls and shelves upholstered in fabrics, kitchen units, cabinets and storage built to suit the needs of designers, down to crafted details such as milled wood door handles. Demonstrating a passion for authentic craft and function, the furniture range includes contemporary classics from Artek, Karimoku Case Study, Nikari and Benjamin Hubert's collection, as well as bespoke pieces that are given a softened touch by Kvadrat fabrics.

## the narrative



via.

## floor plan



2/F

- 1 main workspace
- 2 café
- 3 outdoor terrace
- 4 stairway
- 5 meeting room
- 6 material library



3/F

- 1 gallery
- 2 stairway
- 3 shop
- 4 vip meeting room
- 5 workspace
- 6 principals' office
- 7 kitchen

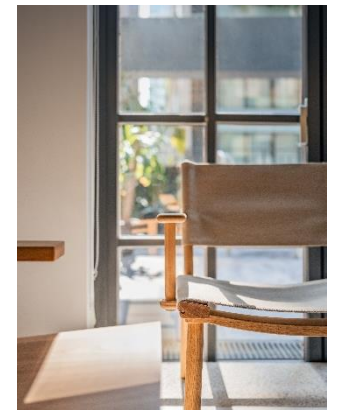
via.



2/f spaces

“definition of a workplace has changed significantly. the concept for contempo was an environment where staff and collaborators can have a feeling of comfort and homeliness. extensive social space, both indoor and outdoor, is a reflection of our commitment to fostering human connections and an awareness for individuals’ well-being.”

frank leung, founder & principal of via.



2 3

- 1 the studio ‘café’, a casual spot for dining and socializing
- 2 the barista-style bar is detailed in travertine, matched with allermuir barstools by benjamin hubert
- 3 sunlight in the lounge

via.

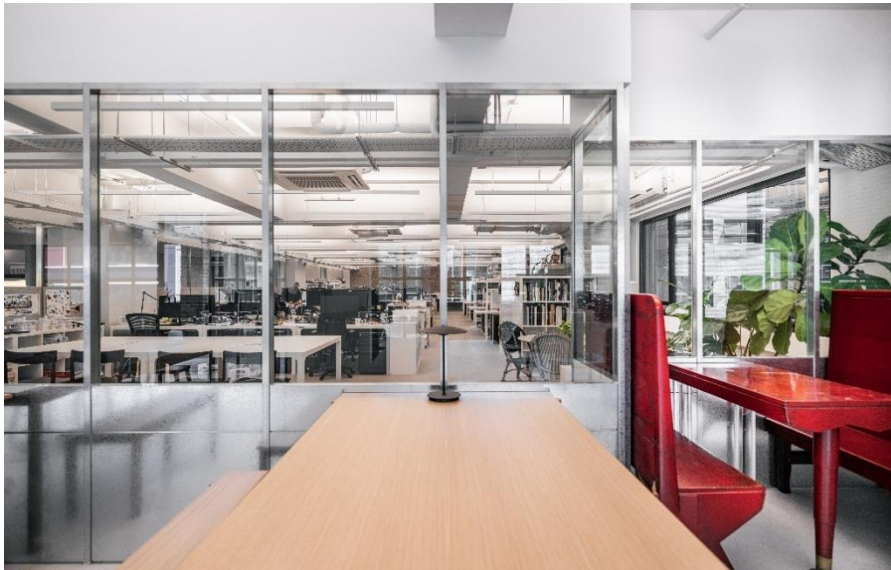




1



2



3

- 1 private meeting space
- 2 architecture models and design creations displayed on fabric-upholstered shelves
- 3-4 the main workspace is enveloped by a galvanized steel and glass frame, bringing in natural light

next page

- 5 feature stairway lined with scandinavian timber connects the two studio floors



via.





via.





### 3/f spaces

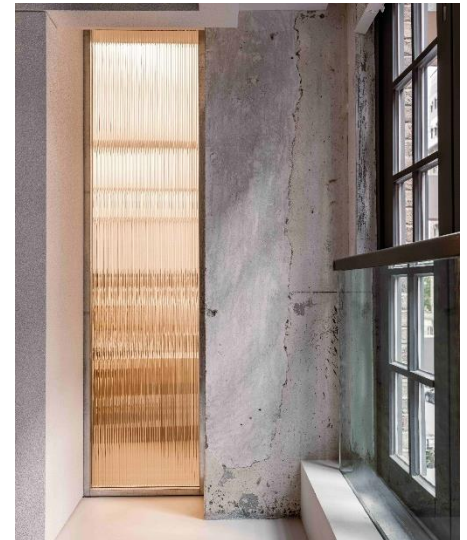


2

- 1 one k edition products on textured green walls
- 2 wall niche in the stairway is lit by recessed lights
- 3 circular door handle in oak for studio entrances
- 4 exposed concrete wall in the gallery contrasts with fluted glass



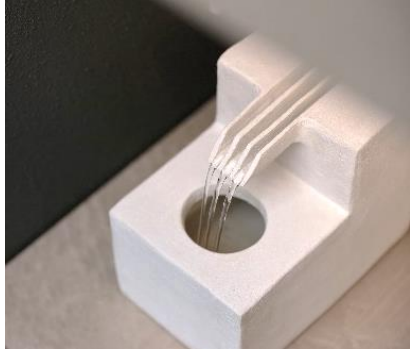
3



4

via.

3/f spaces



2



3



1



4

- 1 the one k edition gallery showcases commissioned art pieces
- 2 sculptural work 'comb fountain' by lily clark
- 3 'rough facet' stool by kieran kinsella
- 4 'rumah hitam' painting by yunizar, bench and 'vanimal' barstool by via. in the gallery

via.



## furniture & fixtures

- 1 material library with purpose-built work bench and cabinets for designers to fully engage in material experimentation
- 2 an opening in the stairway offers a glimpse of the café and terrace beyond it
- 3 pendant lights by via. in the private meeting space
- 4 artek atelier chairs complement a 4m-long teak wood table in the meeting room
- 5 sofa upholstered in 'atom' by kvadrat/raf simons, table by jean-pierre tortil for the delcourt collection
- 6 karimoku case study chair by norm architects for the vip meeting room
- 7 custom kitchen unit and travertine bar table



1



2



3



4



6



5



7

via.

## furniture & fixtures



1



2



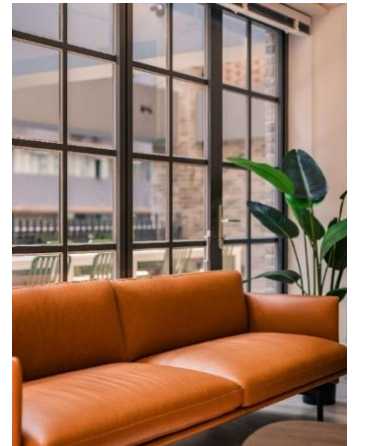
3



4



5



6

via.



## frank leung

As Founder and Principal of **via.**, Frank Leung brings over 25 years of experience to his projects. Trained in the US, the Hong Kong native quickly built a presence in the design scene through working extensively across the residential, retail and hospitality space. His works are characterized by a worldly sophistication and a respect for cultural nuances.

Before founding **via.**, Frank honed his collaborative and planning skills while working as a project manager for a leading Hong Kong developer. During his eight-year tenure, he oversaw every aspect of design and construction, from concept to final launch. The experience enabled an appreciation for cross-disciplinary collaboration and enhanced his ability to protect a design's integrity while managing the practicalities of budget and time constraints.

Frank established **via.** in 2009 with the belief that every design process is a holistic journey where aesthetic disciplines come together to achieve a unified vision. The company name '**via.**' was chosen to reflect the multi-disciplinary nature of the studio, and collaborations required for innovation in design.

Leading a team with over 40, Frank is committed to creating designs that reflect the studio's ethos - "respect, passion, delight" - while fostering an all-inclusive culture.

"At the heart of **via.** is a desire to create delight through design and architecture," explains Frank. "An open-minded exchange of ideas encourages a shared sense of commitment and respect for the project's aspirations, while passion and purpose are fundamental to achieving design excellence."

Since founding **via.**, Frank has become a key figure in the architecture landscape. In 2021, he was named by Tatler as one of Asia's Most Influential creatives shaping the region's design and innovation, and later on became a judge for the Tatler Homes Design Awards. An avid supporter of emerging talent, he served as a mentor for the Design Trust, and also led his team to participate in the Venice Architecture Biennale (Hong Kong Event) for two consecutive editions.

## the designer



**via.**

**via.**

Established in 2009, **via.** is counted among Hong Kong's most in-demand design practices, with an award-winning portfolio of retail, hospitality, commercial and residential projects. Led by founder and principal Frank Leung, the studio's client list includes leading developers, hospitality operators, retail and private clients in the region.

The name '**via.**' – representing a process, a journey and transition – signifies the studio's collaborative culture. Based in Hong Kong with a diverse team of over 40 staff, the energy of the studio is drawn from collaborations with partners and clients, matched with in-house expertise ranging from experienced architects and interior designers, furniture and material specialists, to decorators, graphic and 3D visualizers.

Driven by the curiosities of life and a continual quest for beauty, **via.** creates architecturally choreographed spaces tailored to each project's locale, purpose and aspirations. Every commission begins with an analysis of the end users' needs, exploring how craftsmanship and creativity can impact on the spatial experience. Regardless of the brief, every detail reflects a refined sensibility that underscores the relationship between sophistication and function.

**via.**'s designs have been recognized globally, with prizes in Interior Design's Best of Year Awards, IIDA Asia Pacific Design Awards, International Property Awards, Architectural MasterPrize, World Interior News Awards, HKIA Annual Awards and the Asia-Pacific Interior Design Awards. Playing an active role in championing Hong Kong design, the studio represented Hong Kong in the Venice Biennale of Architecture for two consecutive editions.

The studio's notable designs include: Atrium House, La Maison Goutal, House of Madison, ArtisTree, 28 Aberdeen Street, Novum East, W50 and Ponti Wine Cellars.

For more information, visit **via.** online:

Website : [www.via-arc.com](http://www.via-arc.com)  
Instagram : [www.instagram.com/via.arc](https://www.instagram.com/via.arc)  
Facebook : <https://www.facebook.com/viaarc>

the studio



**via.**



via  
architecture  
limited

contempo

media contacts  
nicole koo | [nicole@via-arc.com](mailto:nicole@via-arc.com) | +852 2835 9088  
cyrus ng | [cyrus@via-arc.com](mailto:cyrus@via-arc.com) | +852 2835 9083

via.