

# KIBA Tokyo Residence

"木 (KI)" means wood, and "場 (BA)" means town.

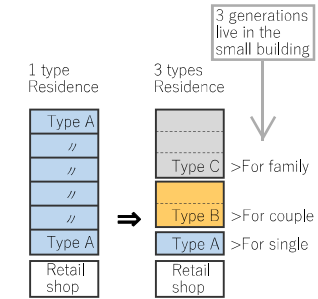


location : kiba, Koto-ku, Tokyo, JP  
function : residence + retail shop  
scale : 7 stories  
structure: reinforced concrete  
site area: 72.97 m<sup>2</sup>  
building area: 58.17 m<sup>2</sup>  
floor area: 395.52 m<sup>2</sup>

The old landscape of Kiba

## ■The destandard residence

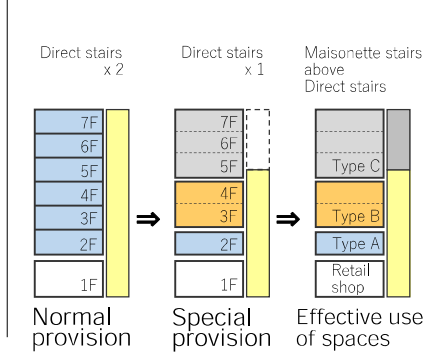
- >Introducing additional values and potential that are versatile to a small residential building.
- >Making a distinct trait by having three different housing styles and introducing two different maisonette style rooms into the building.



Destandard Diversity

## ■The exceptions of maisonette style

- >Obligation to build more than two staircases that lead to the first floor (emergency stairs) when having more than 6 stories.
- >Special provision that allows one direct staircase in a multiple floored building when there is an entrance on the fifth floor and the combined space of the 5th~7th floor is less than 200 m<sup>2</sup>.



## ■The aesthetics and subtlety of Fukagawa Kiba in Tokyo

- >Displaying the aesthetics and subtlety of Fukagawa by placing the Kouraiya latticework which is one of the most iconic latticeworks of the Edo period in the scenes of Kiba.
- >The inside of the building creates various structures with different housing plans while the outer part of the building gives the proportionate impression.

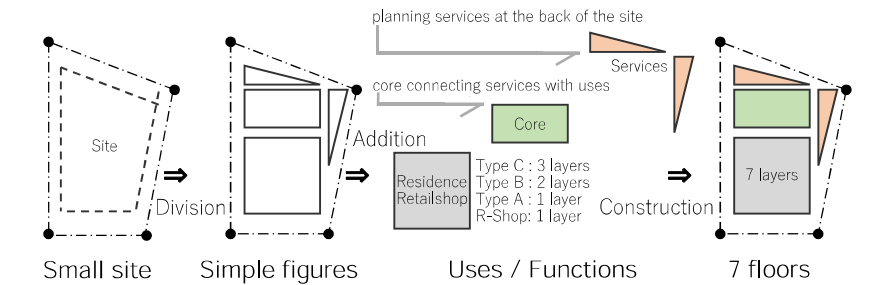


Old landscape of Kiba

Kouraiya latticework

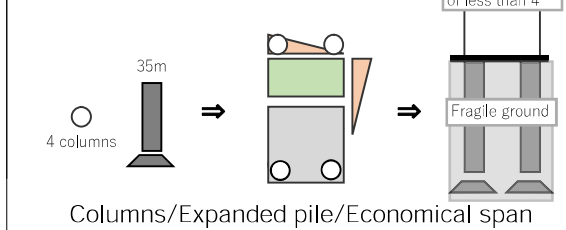
## ■The architectural diagram : split, addition and construction

- >The site was split into the simple shapes in accordance with the original shape of the site in spite of the limitation in the size of the site.
- >Giving roles such as a shop and house and functions such as core and service to the divided parts.
- >Constructing the design by geometrically combing all the parts like building blocks.

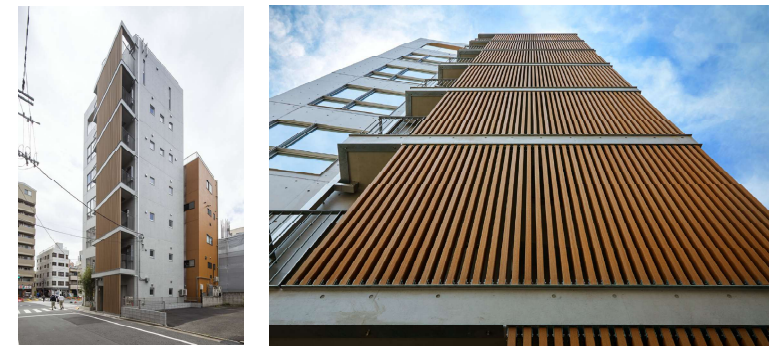
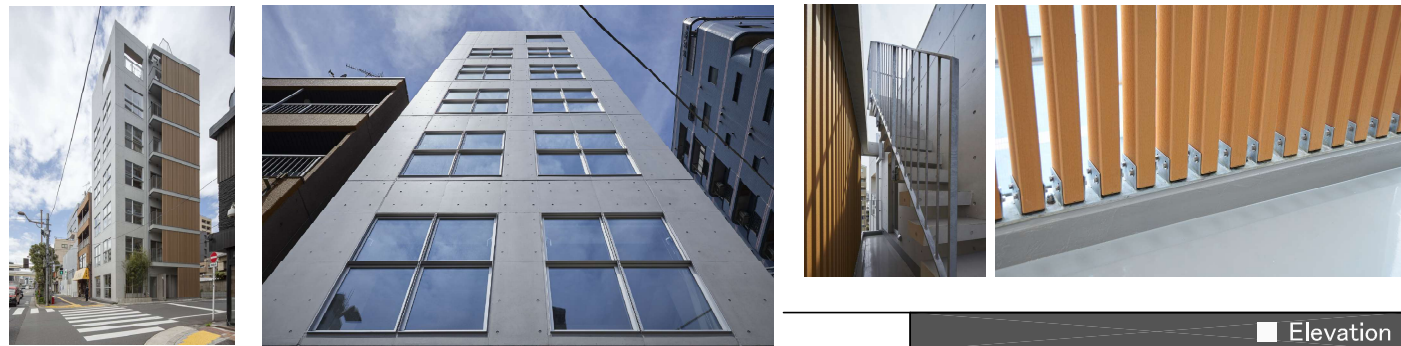


## ■The structural diagram

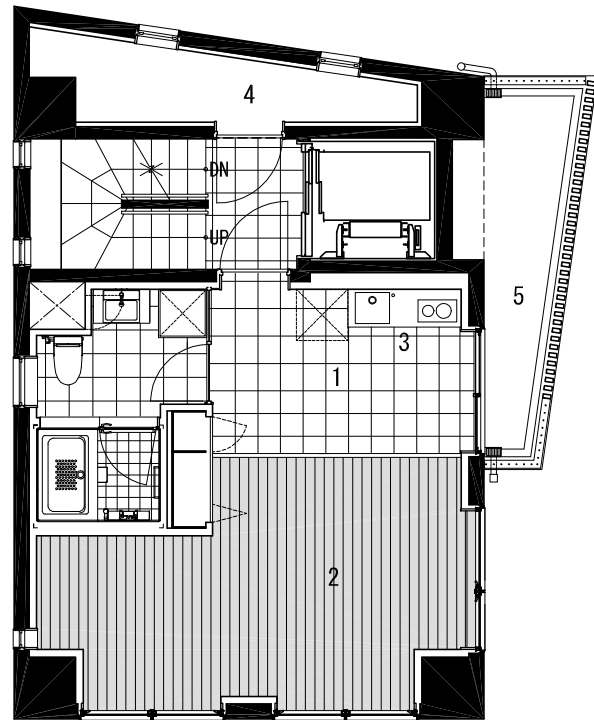
- >Reinforced concrete used for the construction in order to prevent the depreciation of the building from the trembles caused by cars on the motorway as well as the subway.
- >Reasonable construction using rigid frames and economical spacing between pile foundations with the aspect ratio of less than 4.



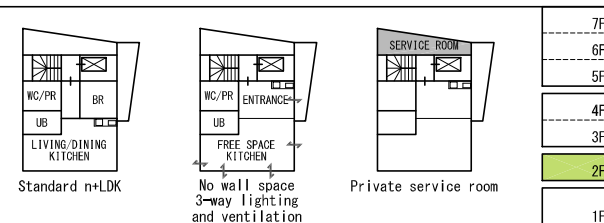




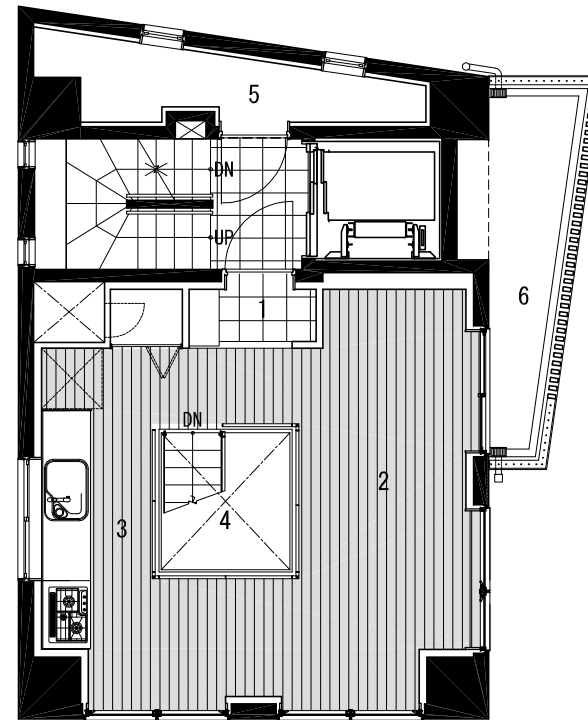
|                     |                        |             |
|---------------------|------------------------|-------------|
| 1 FREE SPACE        | 8 BALCONY              |             |
| 2 POWDER ROOM       | 9 PRIVATE SERVICE ROOM | Type C      |
| 3 ENTRANCE          | 10 EV HALL             | Type B      |
| 4 MAIN ENTRANCE     | 11 EV SHAFT            | Type A      |
| 5 SUB ENTRANCE      | 12 MACHINE ROOM        |             |
| 6 ENTRANCE CORRIDOR | 13 BICYCLE PARKING     | Retail shop |
| 7 RETAIL SHOP       |                        | Section     |



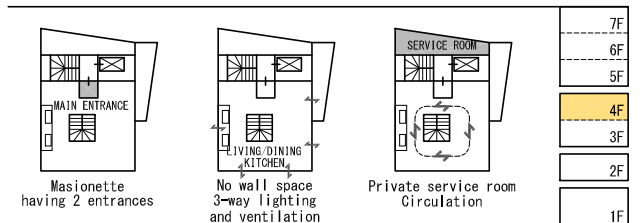
|            | Type A         |
|------------|----------------|
| Resident   | For one person |
| Room type  | Studio         |
| Floor area | 47. 79㎡        |



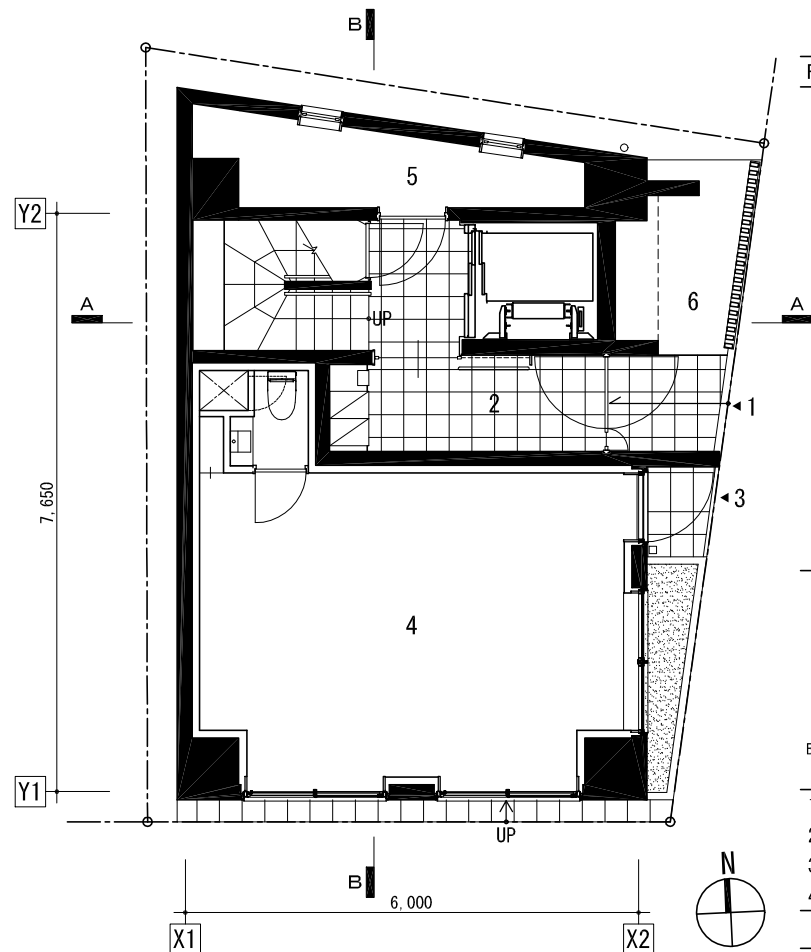
- 1 ENTRANCE
  - 2 FREE SPACE
  - 3 KITCHEN
  - 4 PRIVATE SERVICE ROOM
  - 5 BALCONY
- 1 / 1 ■ 2nd floor plan



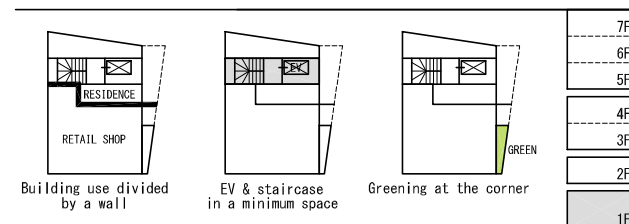
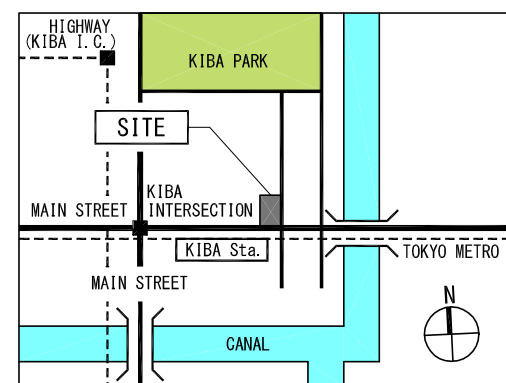
|            | Type B             |
|------------|--------------------|
| Resident   | For a couple       |
| Room type  | 2-story maisonette |
| Floor area | 95. 58㎡            |



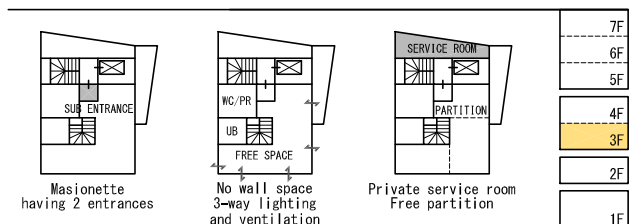
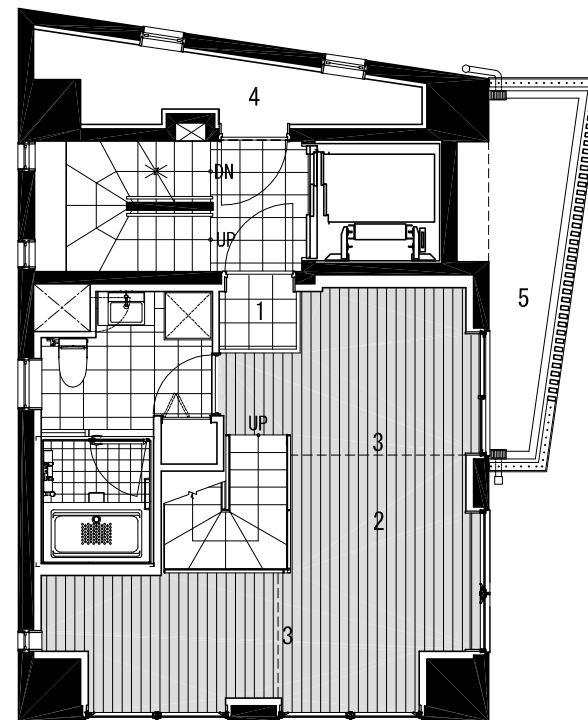
- 1 MAIN ENTRANCE
  - 2 FREE SPACE
  - 3 KITCHEN
  - 4 VOID
  - 5 PRIVATE SERVICE ROOM
  - 6 BALCONY
- 2 / 2 ■ 4th floor plan



|            | Retail Shop |
|------------|-------------|
| Floor area | 28. 84㎡     |

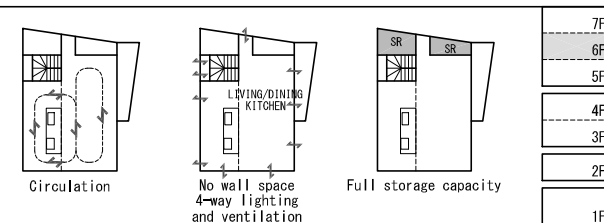
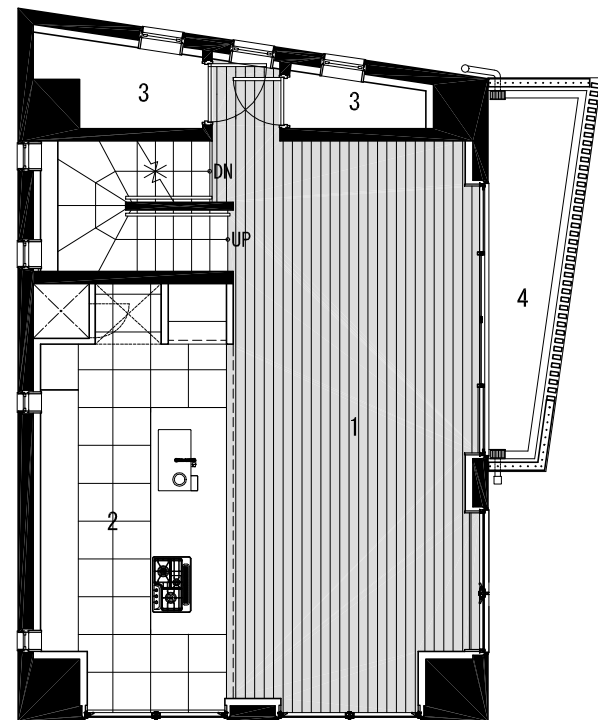


- 1 RESIDENCE ENTRANCE
  - 2 ENTRANCE CORRIDOR
  - 3 RETAIL SHOP ENTRANCE
  - 4 RETAIL SHOP
  - 5 MACHINE ROOM
  - 6 BICYCLE PARKING
- 1 / 2 ■ 1st floor plan



- 1 SUB ENTRANCE
  - 2 FREE SPACE
  - 3 FREE PARTITION
  - 4 PRIVATE SERVICE ROOM
  - 5 BALCONY
  - 6 BICYCLE PARKING
- 1 / 2 ■ 3rd floor plan

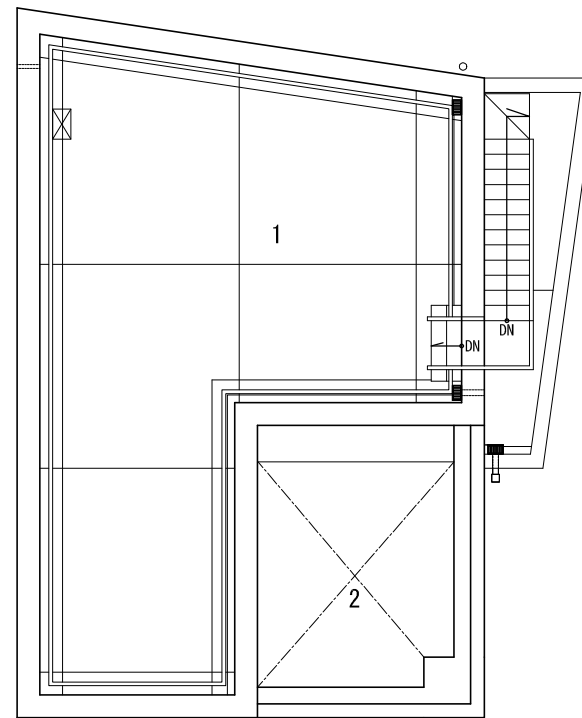




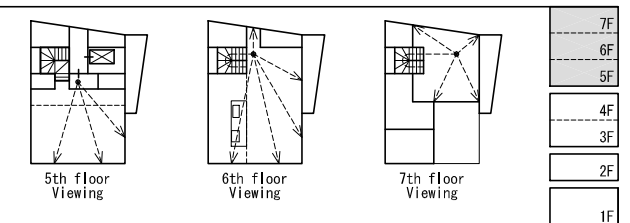
- 1 FREE SPACE  
2 KITCHEN  
3 STORAGE ROOM  
4 BALCONY

2 / 3

6th floor plan

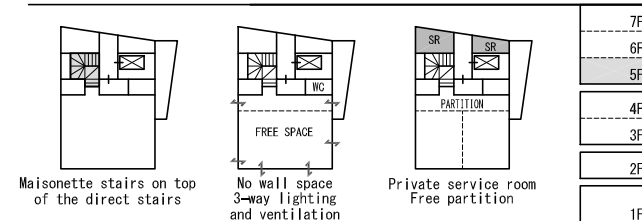
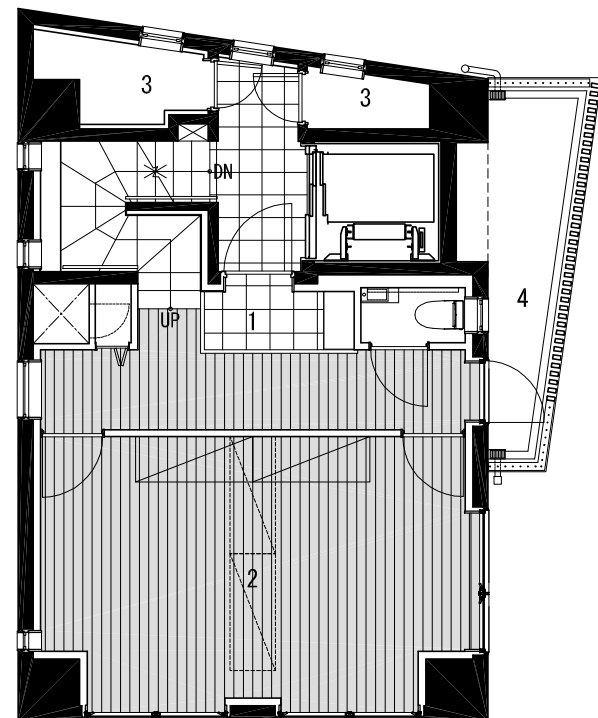


| Type C     |                            |
|------------|----------------------------|
| Resident   | For a family with children |
| Room type  | 3-story maisonette         |
| Floor area | 155.86m <sup>2</sup>       |



- 1 ROOFTOP  
2 VOID

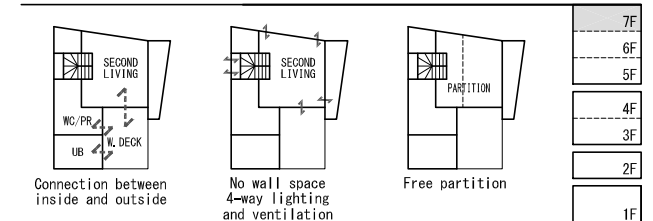
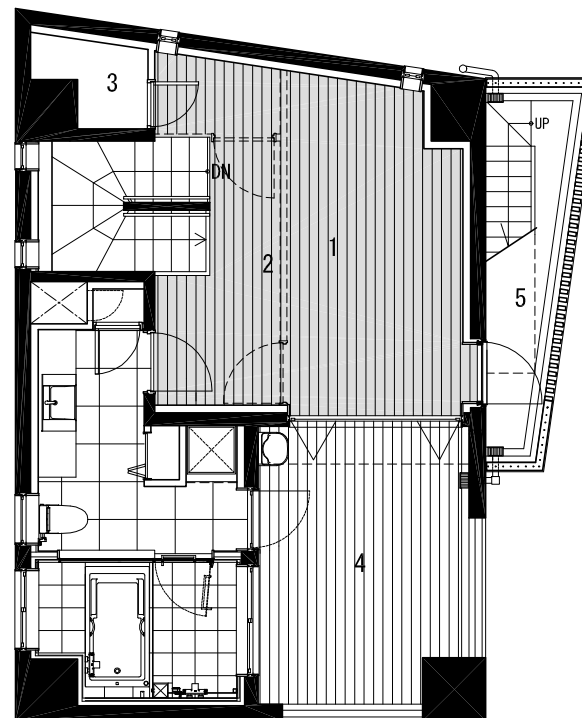
Roof floor plan



- 1 ENTRANCE  
2 FREE SPACE  
3 STORAGE ROOM  
4 BALCONY

1 / 3

5th floor plan



- 1 FREE SPACE  
2 FREE PARTITION  
3 STORAGE ROOM  
4 WOODEN DECK

3 / 3

5 BALCONY

7th floor plan