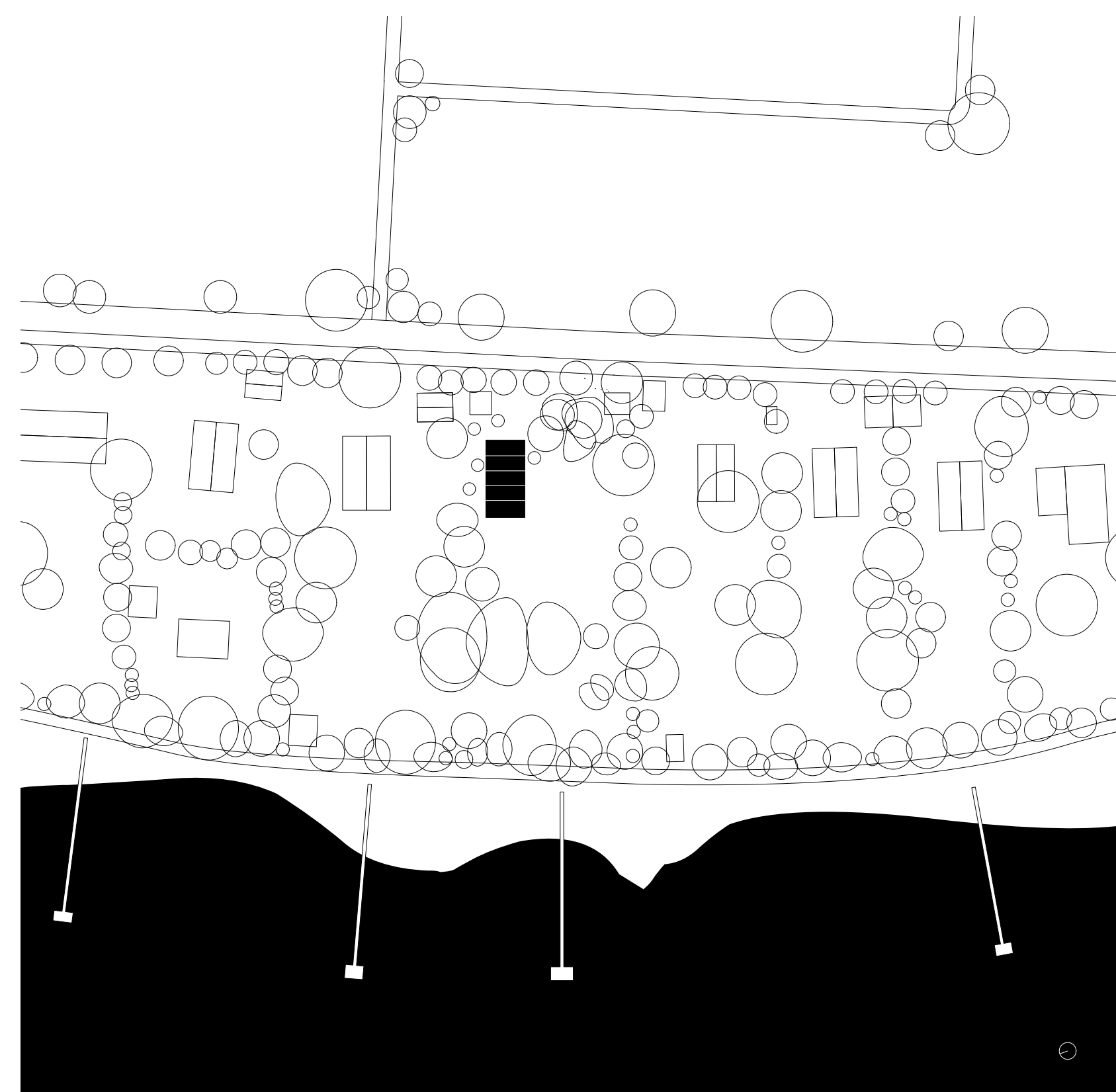


House on a lake

Located in Bavaria, Germany

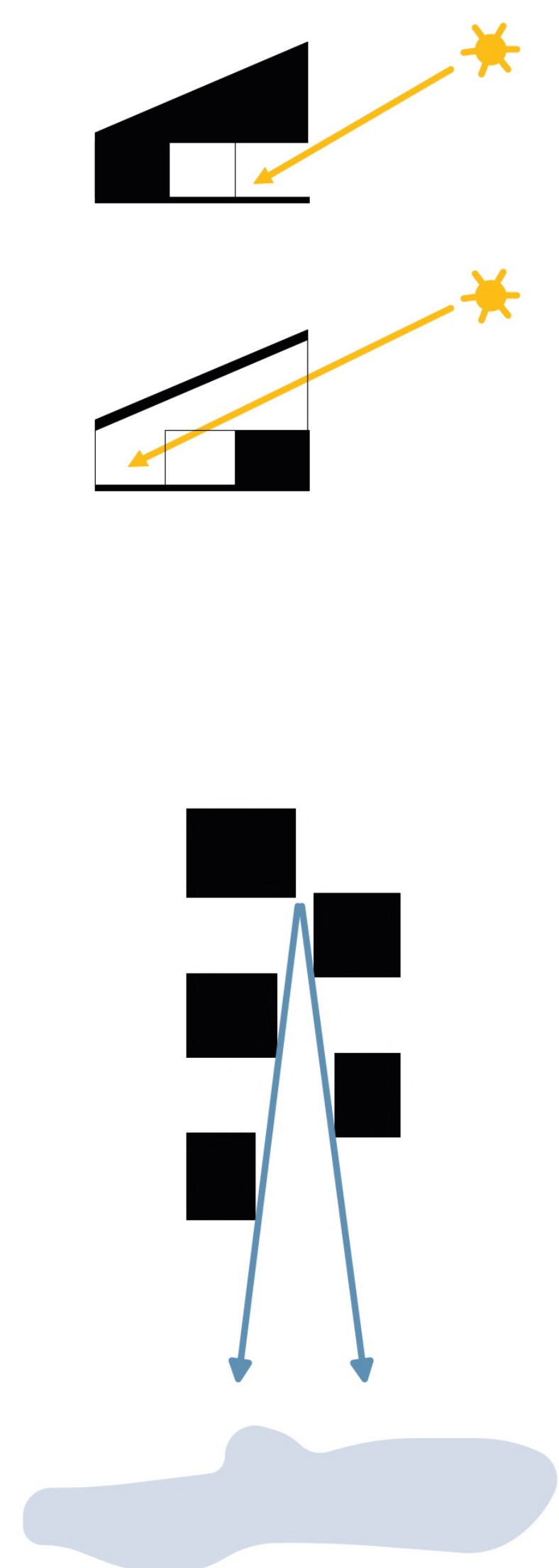
A family home expressing its inner life, its context of seasons, light, and surroundings, as well as the construction techniques of a solid wood building in a simple architectural figure.

1/9



Situation



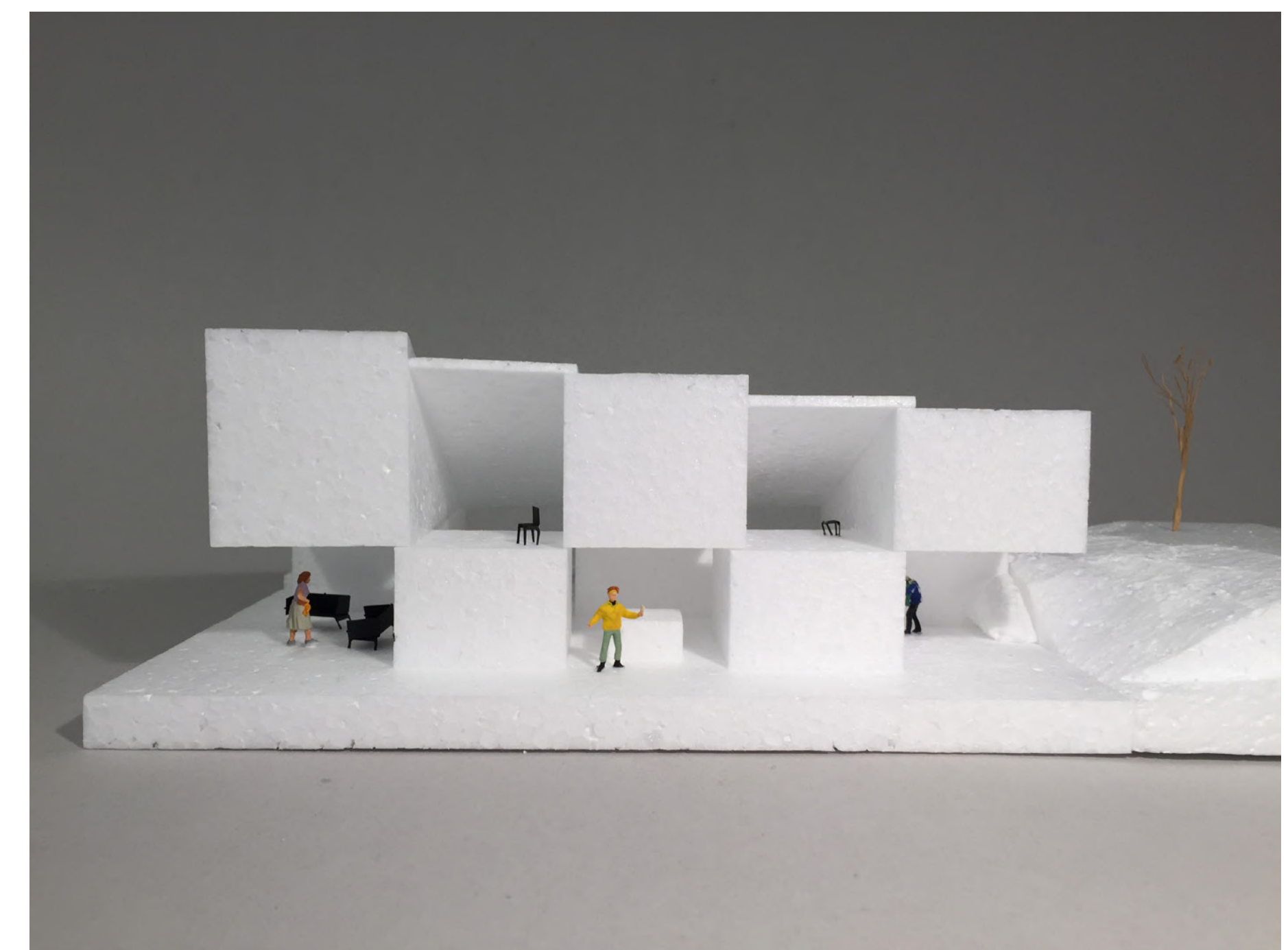


2/9

Schemes



View through the open living area that unfolds horizontally and vertically between the with private rooms.



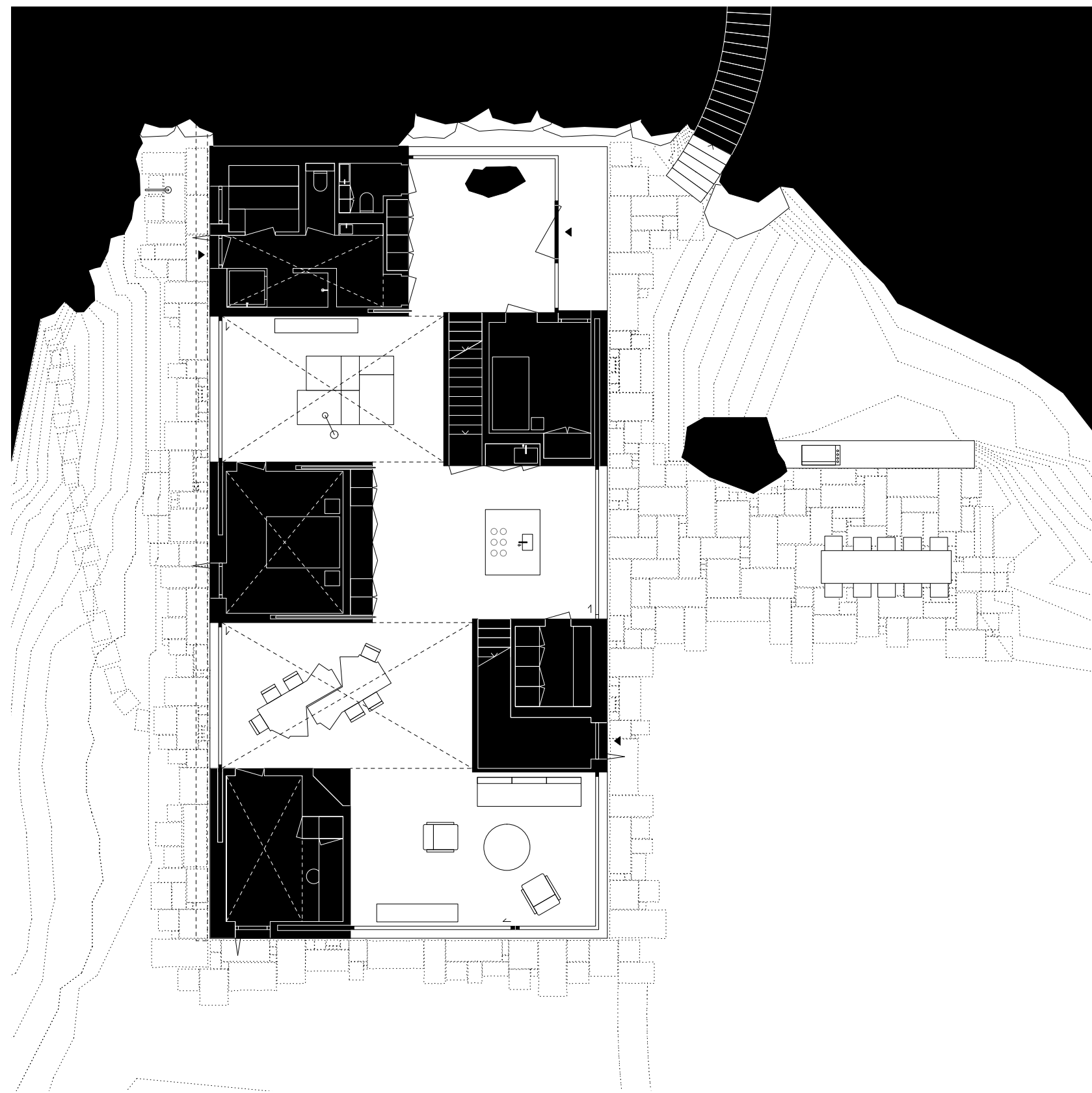
A Working Model showing the conceptual configuration of private rooms in boxes and the open space for daily family life in between.



...seen in perspective...

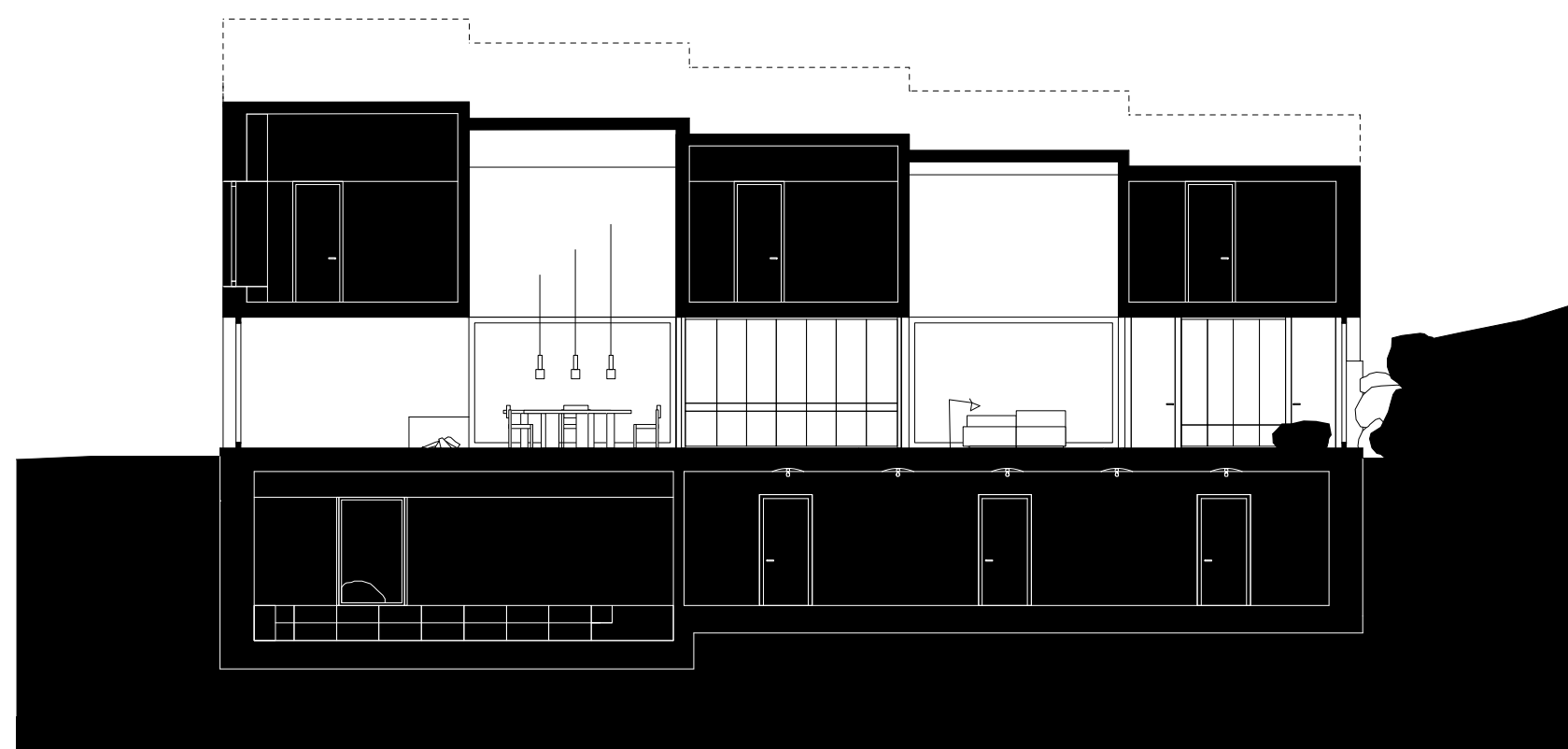


...and from behind.



Groundfloor

Conceptionally, we distinguish between private rooms and a generous open space for daily family life. The open space between the private rooms can unfold horizontally and vertically, bringing in light deep into the house - even in winter - as well as drawing views into the garden, the treetops, and across the lake from any vantage point.



Section through the building showing the changing roomheights of the common living hall.

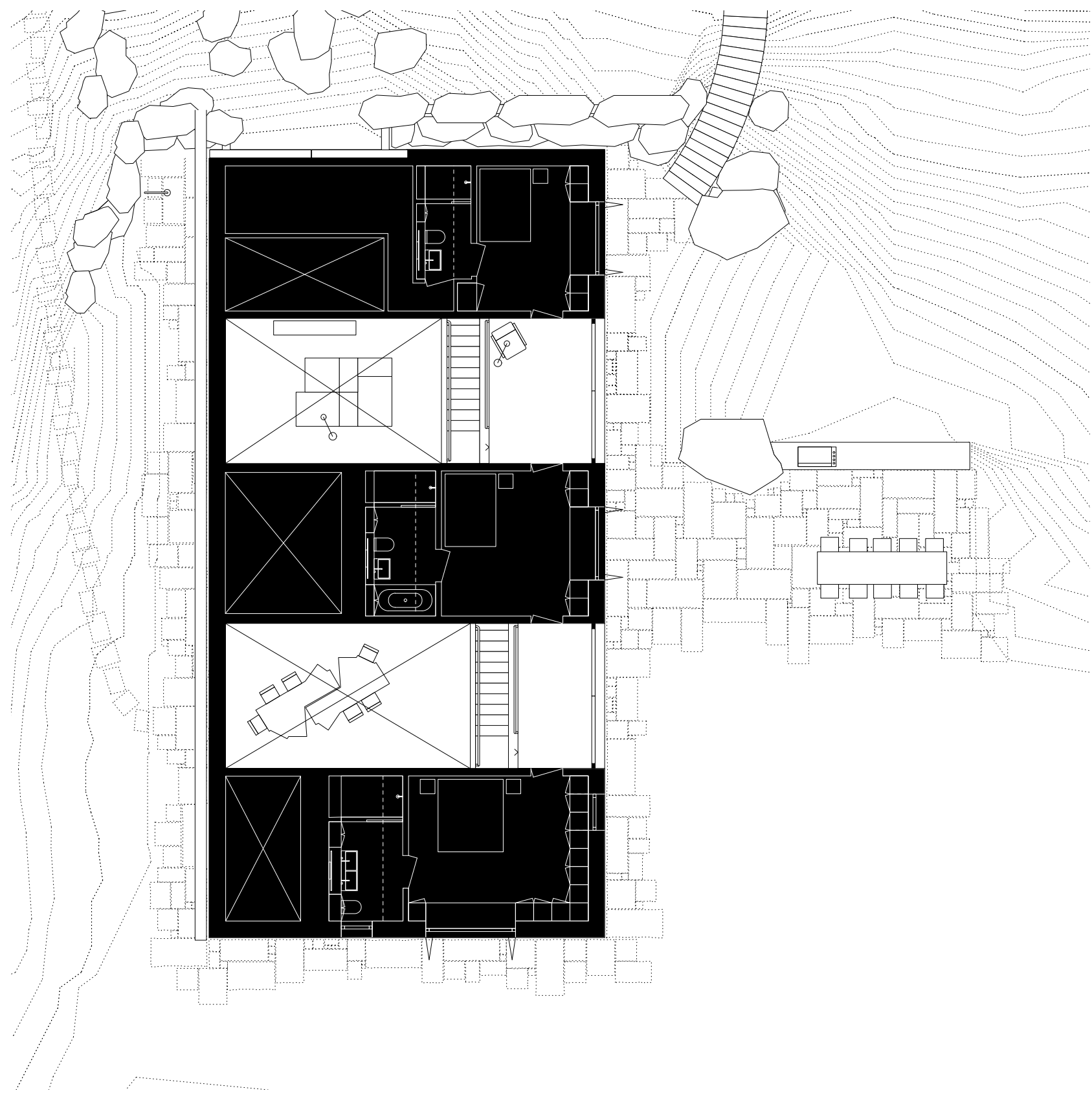


View through the open living area showing the central kitchen.



The covered entry outside and the entrance space with a rock embedded in the floor. The glas facade is not load bearing and the huge overhang of the box above is entirely held by a steel inforced timber construction by bringing this overhang in balance with the even bigger overhang above the living room on the other end of the building.

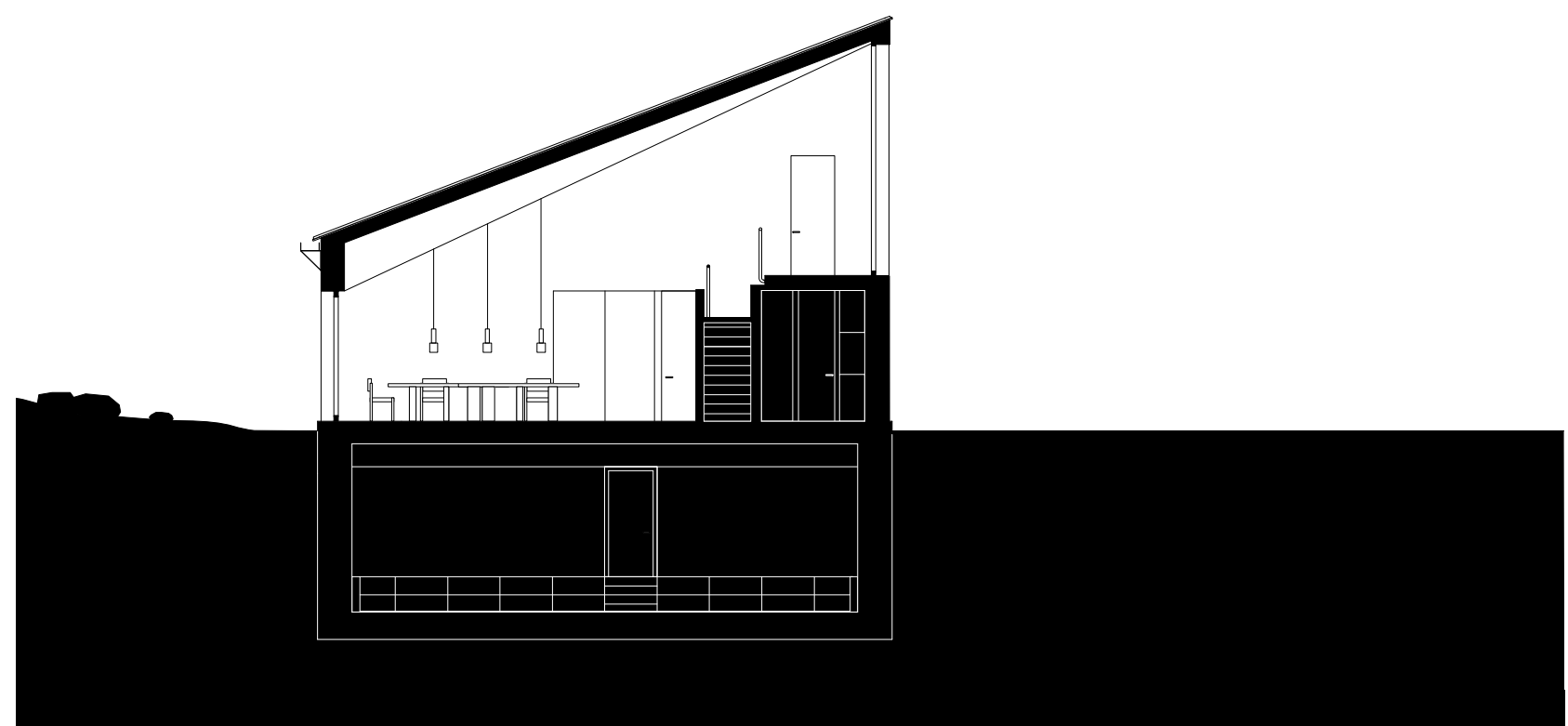




1st floor

The podiums on the upper floor extend the open space vertically and together with the adjoining rooms they form an enfilade over the entire length of the building.

3/8



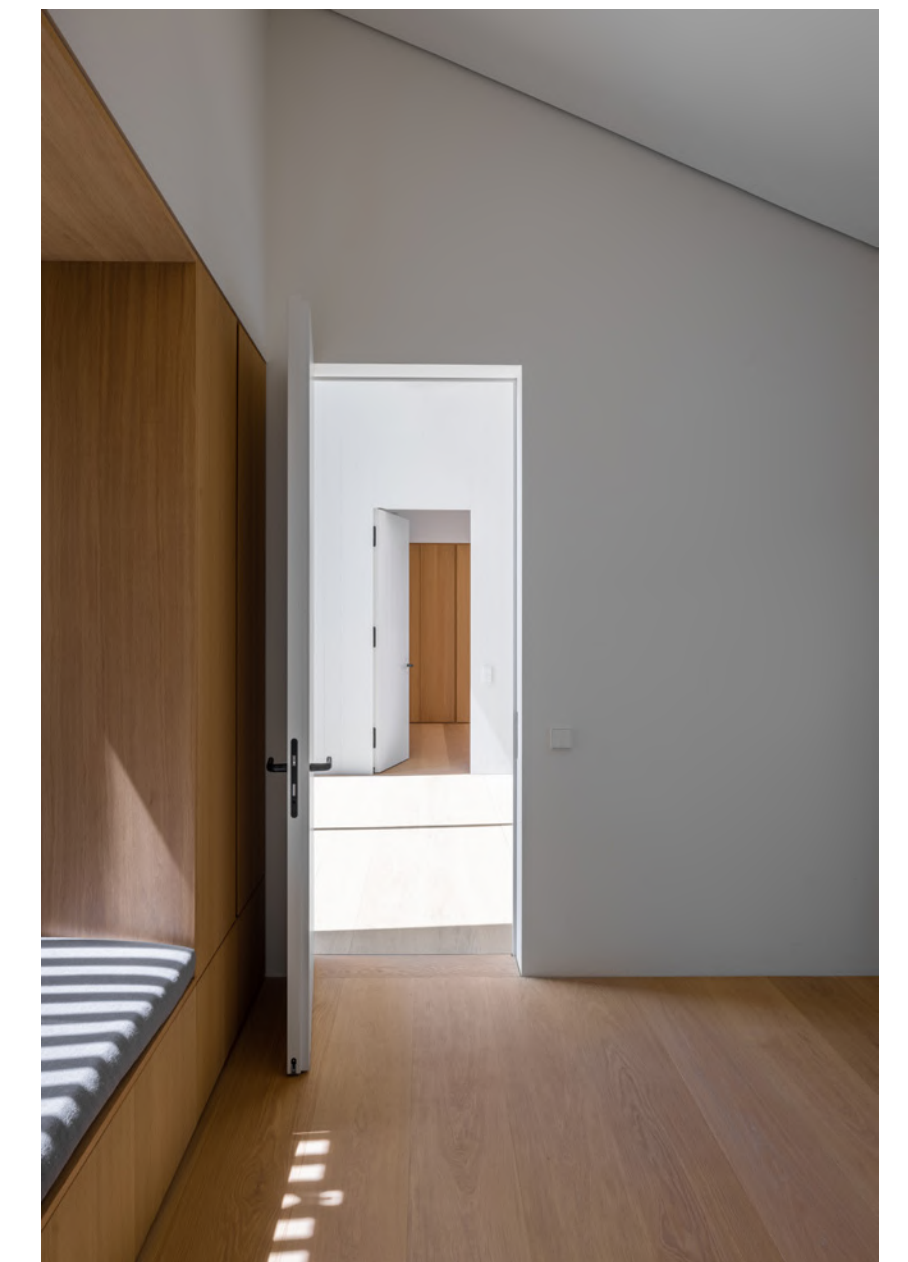
Section trough the dining area and the podium of the upper level.



Private rooms are hidden behind translucent shades....



.... but can also be fully opened for Phoramic views.

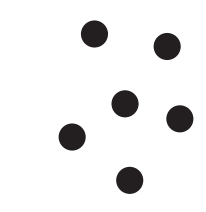


Enfilade of rooms and podiums.



Hand crafted doors made out of the wall's masstimmer material let the wooden structure go through with only a minimal gap between.





Elevation South

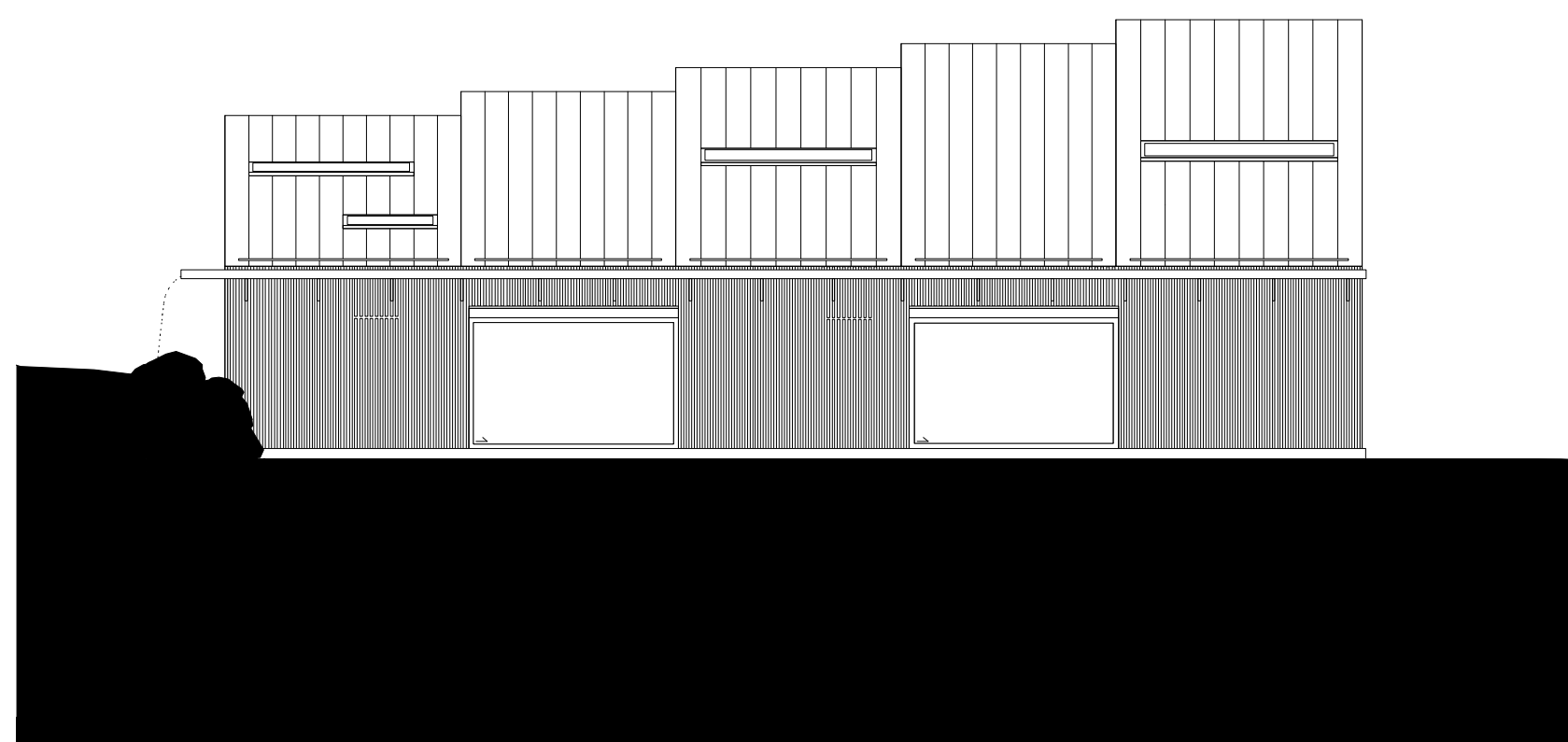
In the facade, the wooden sculpture is shown in rhythmic alternation of open and closed. Here wooden slats cover the private rooms behind translucent shutters that can be opened.

On the backside, a large gutter collects rainwater and spews it into a rain basin.



Facade with play of open and closed parts and hidden windows becoming visible in the dusk.

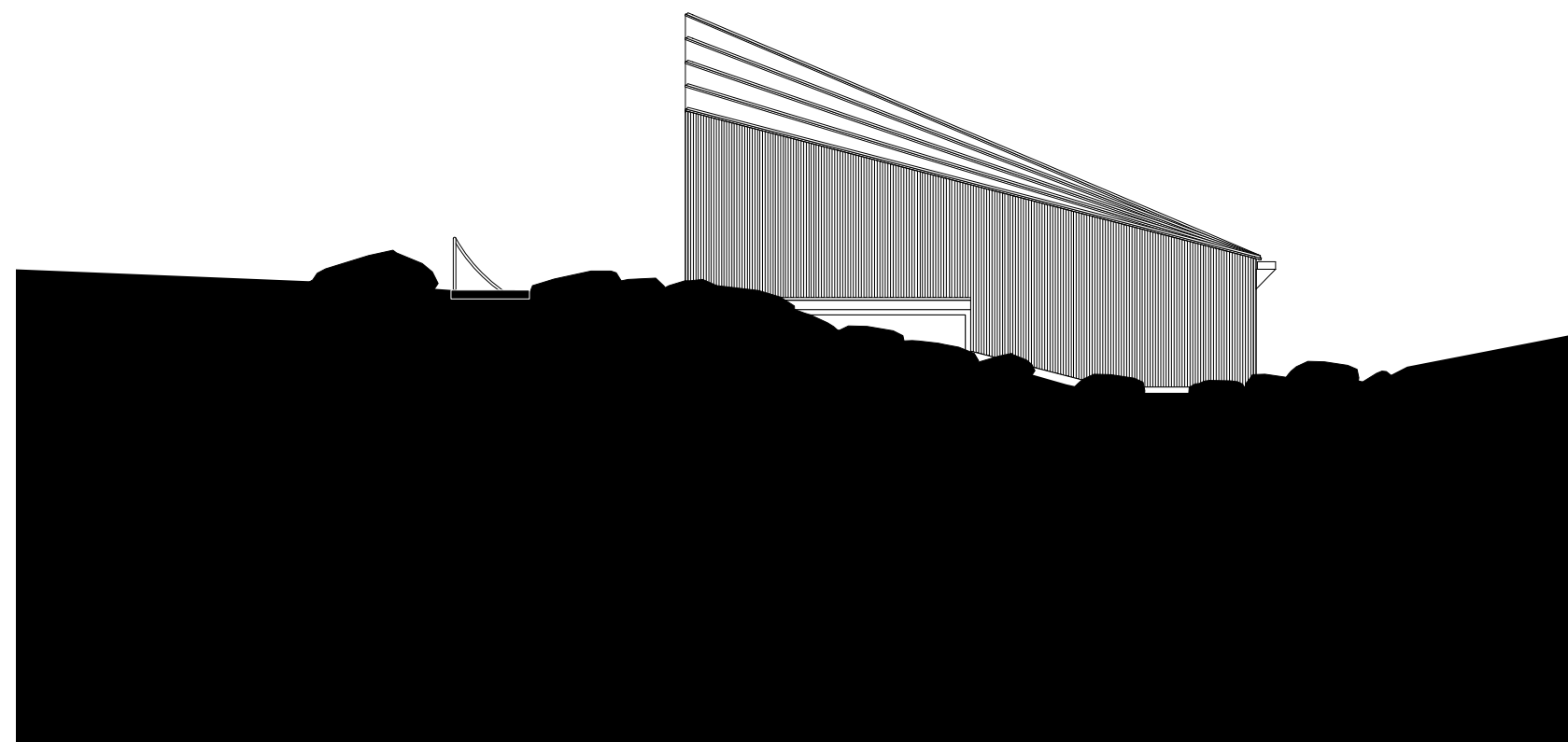
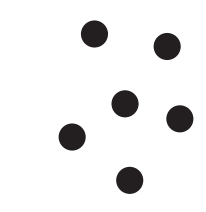
4/8



Elevation North



An intimate garden borders the back of the house.



Elevation East

The shape of the fanning roof counteracts the sloping terrain and gives the interior variety in heights.



Hidden on a plateau above the lake, nested inbetween old trees.



The characteristic shape of the roof, fanning out towards the lake.

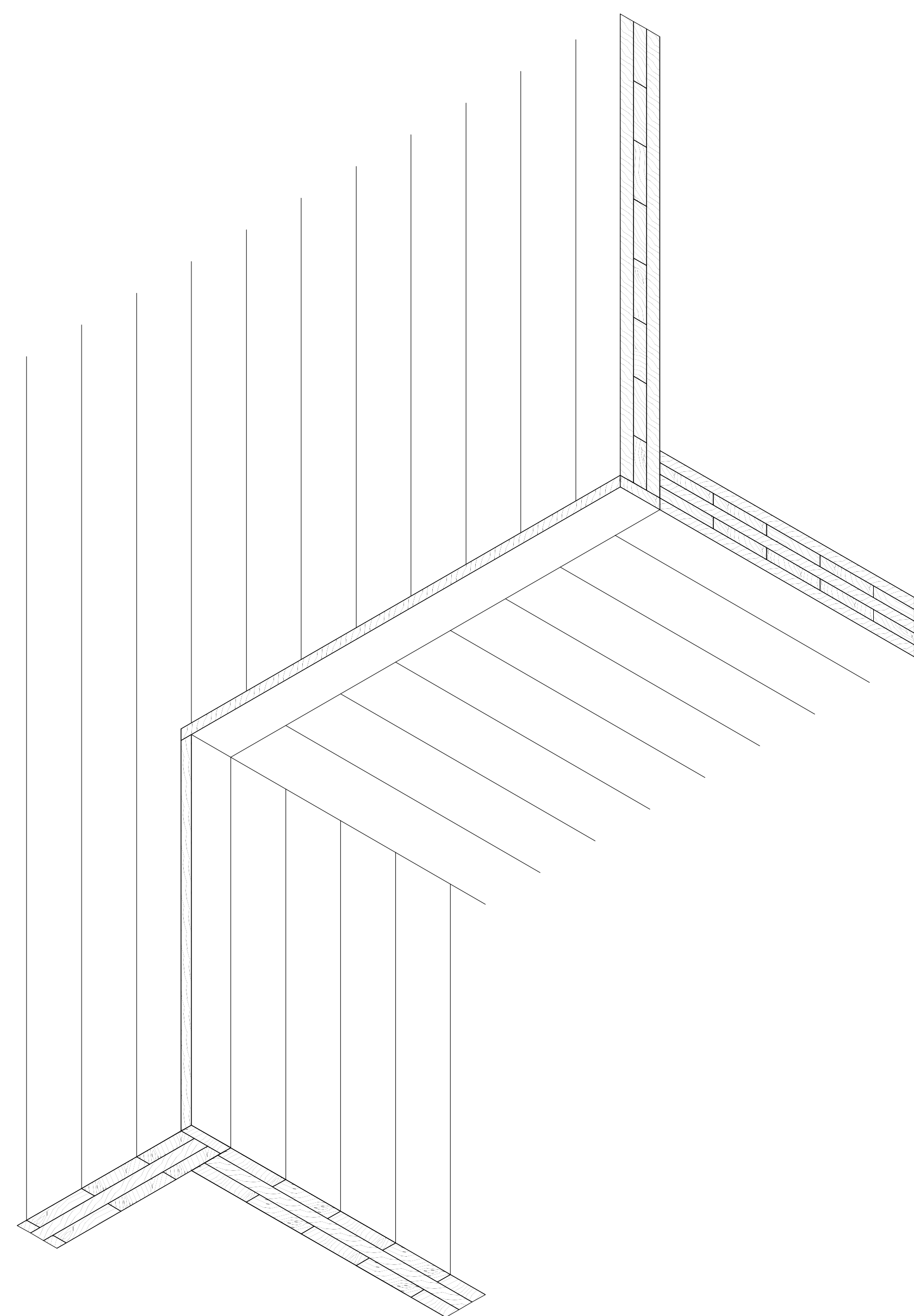
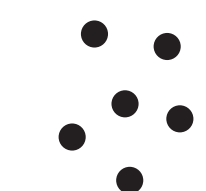
5/8



Section through the kitchen



The kitchen opens entirely to the outside with sliding doors disappearing inside the walls.



Schematic detail of a wall-joint in the mass timber construction (BSP)

6/8

The house is built of mass timber which is only painted for the final finish. The timber construction sits on a concrete base slightly raised over ground. All materials can show their immanent qualities.



Detail from the stairs going down to the entrance space showing the reduced palette of materials being used: mass timber, oak wood, steel, rock, Terrazzo.



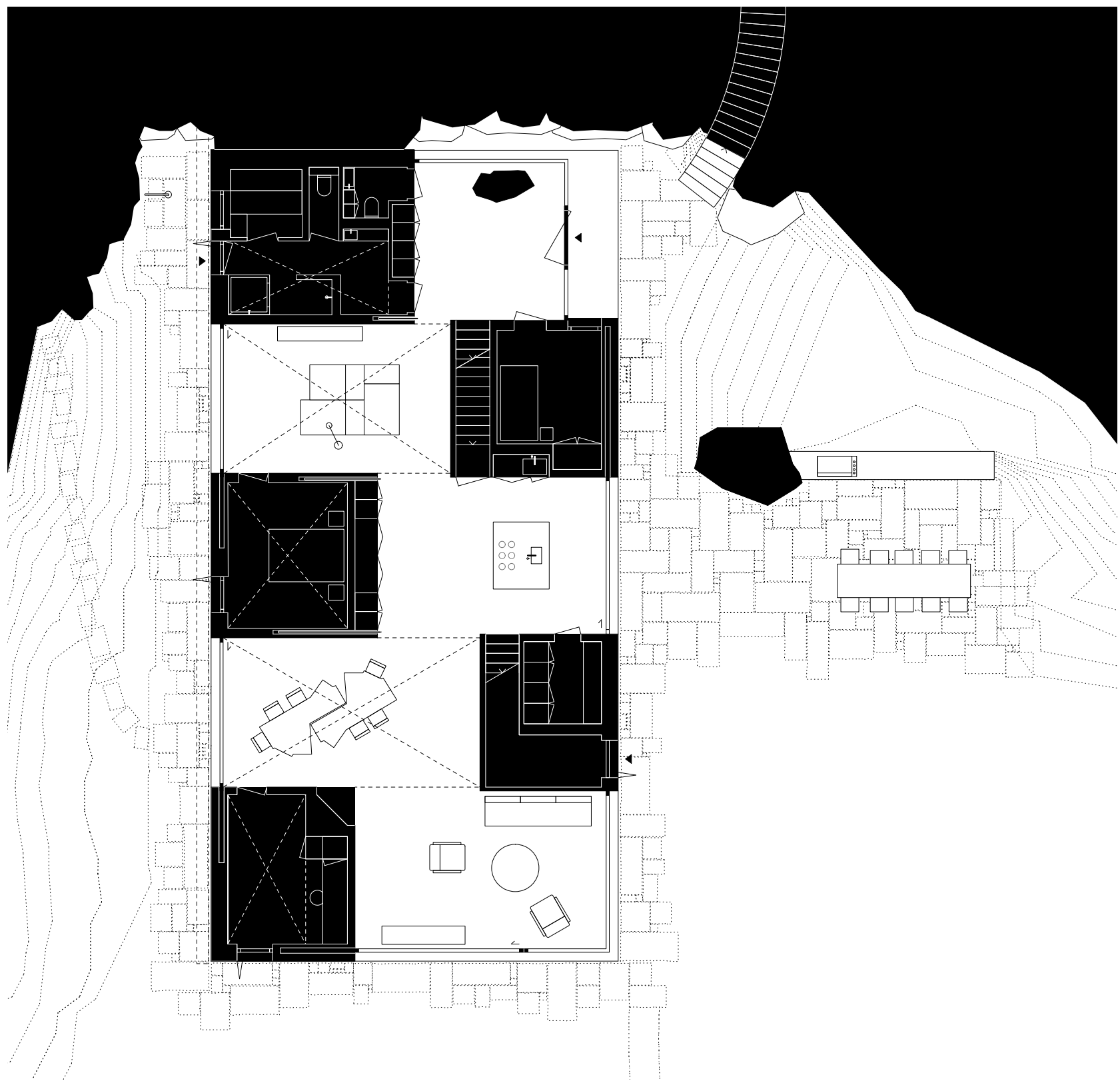
The mass timber during construction.



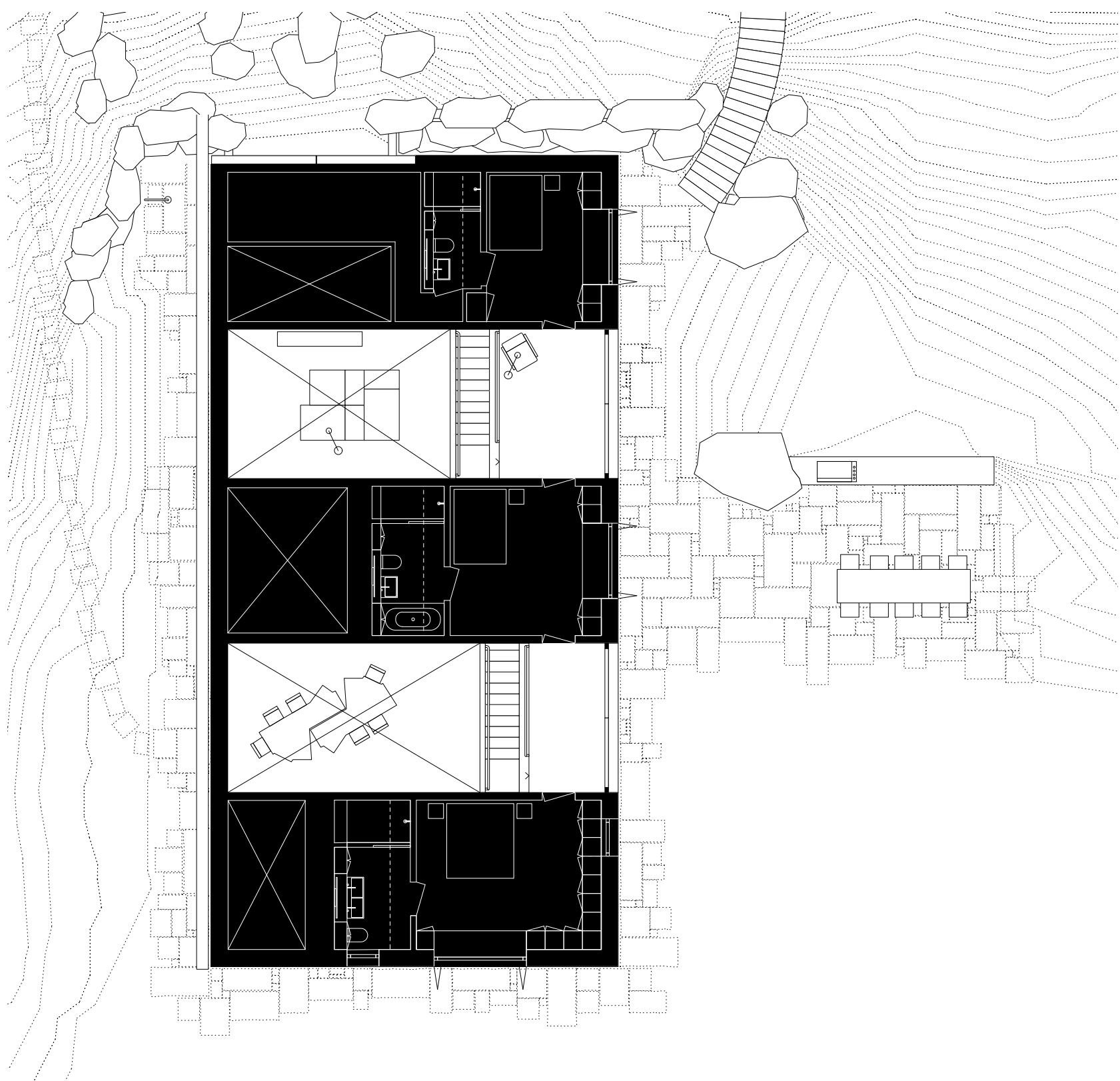
Detail of the kitchen block made in one piece jointless with the entire Terrazzo flooring.



The mass timber during construction showing the cutout for the fireplace on the left.



Groundfloor



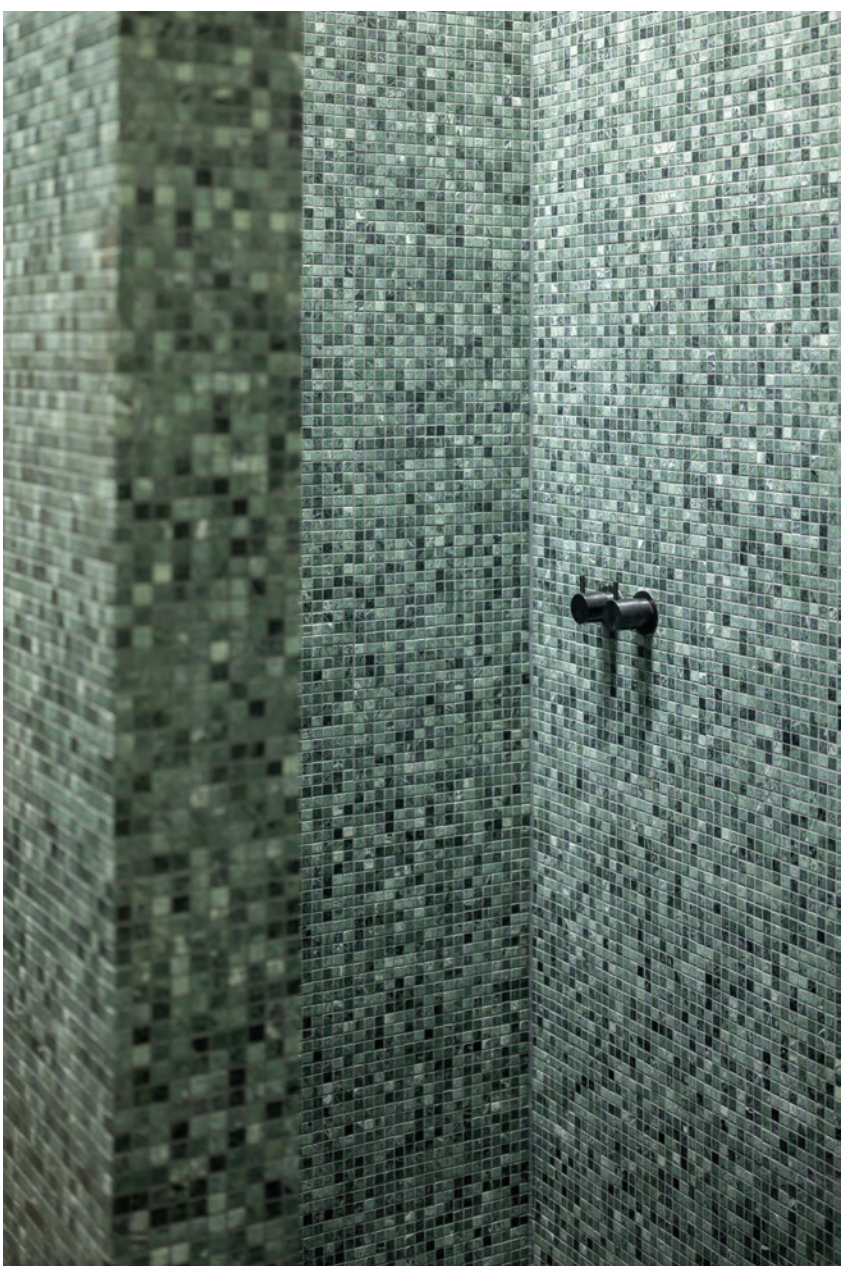
1st floor



The sauna area is kept in a cozy green and has a separate access from the outside. Here you can enter when you come back from swimming in the lake or exit for a bath in the snow after sauna.



Bright Bathrooms with skylights in the upper rooms....



A skylight allows light to fall into the shower...



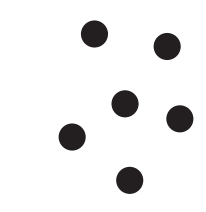
... and a niche gives space for a small washbasin.



...with sinks made out of one piece and...

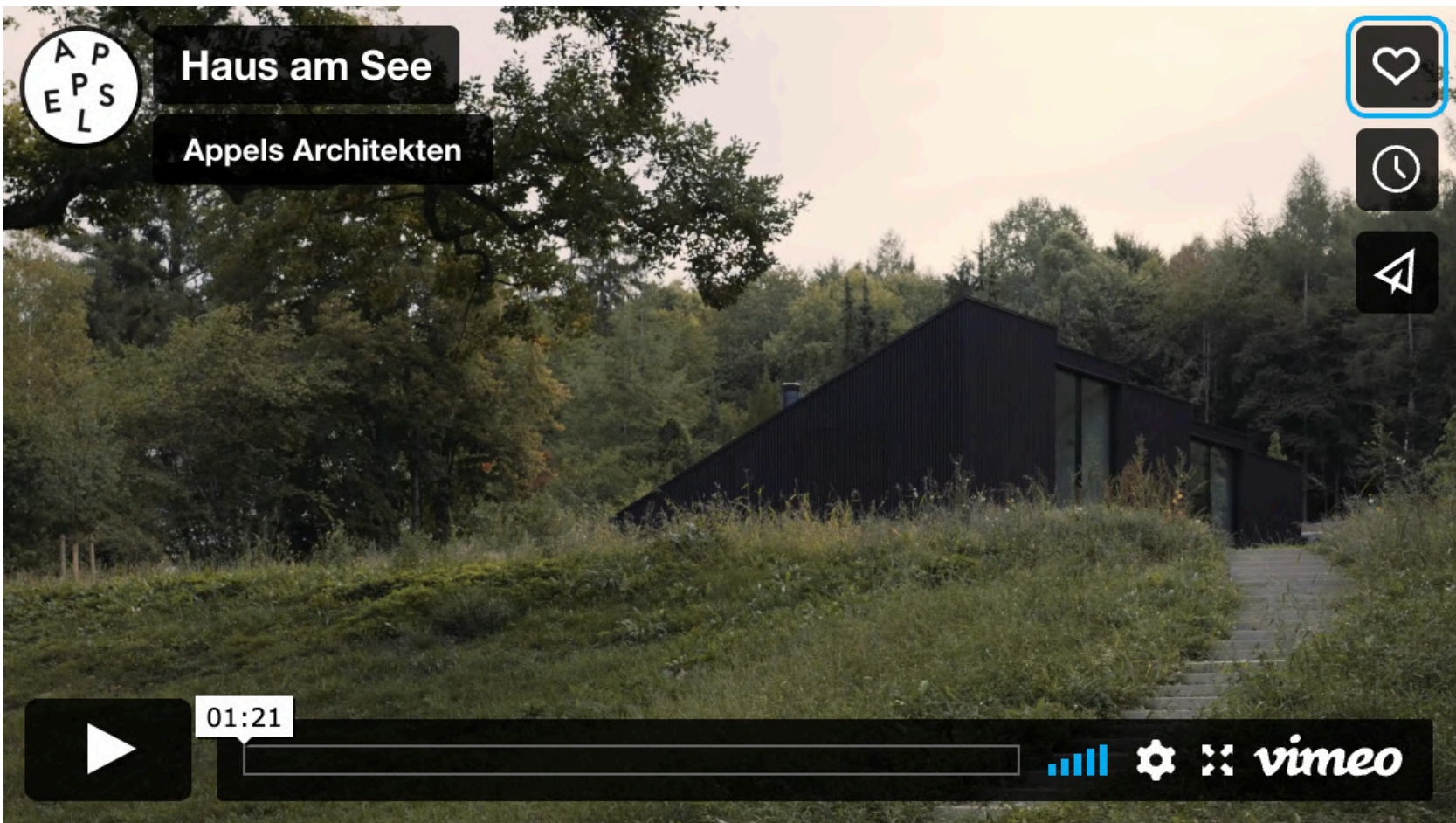


....mosaic tiles from the same material.



Section showing the basement with its corridor and miniature sports hall at the end.

In the basement, the floor, walls and ceilings are made of exposed concrete. A central corridor, where storage and technical rooms are located, leads to a hall-like space at the end. This space can be used in a variety of ways in the sense of a miniature gymnasium.



Find a short movie on Vimeo: <https://vimeo.com/manage/videos/761597998>



A huge room in the basement acts as miniature sports hall for flexible uses.



Central corridor of the basement with lampshades formed in the exposed concrete.



Detail of concrete lampshade and door.



Detail of the steel handrail having only two fixingpoints.