

ANWAR GARGASH DIPLOMATIC ACADEMY, ABU DHABI, UNITED ARAB EMIRATES

Established in Abu Dhabi, right at the heart of the city's diplomatic district, this facility was conceived to support the country's Foreign Affairs Ministry through the education of young diplomats and government leaders. Rooted in Arab tradition and culture, an introverted building was created, with the play of outer opacity and internal transparency serving as a major motif. Diplomacy requires an openness to the world. This characteristic has been expressed through the large, welcoming glazed portals on either side of the opaque cubic form, as well as the proliferation of communal and collaborative spaces, and the site's borderless integration into its surroundings.

The building's envelope has been designed to combat the harsh elements of the regional climate, while also representing the nation's strength. Simplicity of form can be seen in the cubic mass housing both classrooms and offices for staff and faculty. Three portions of the mass extend outward, continuing the solidarity of the building's shape.

Concerns of sustainability are addressed via the double skin façade. A high-performance glazing system acts as a first defense against solar heat gain, doubled by an outer skin of perforated aluminum screens. These panels diffuse sunlight throughout the interior, without obstructing views. Each side of the building is encapsulated by different panel fold patterns, creating a unique rhythm of shadow and light that evolves throughout the day.

Entry finds a central atrium that is expansive and well-lit, connecting every level. Wood-clad staircases wrap around the perimeter, encouraging movement. The main staircase widens near the student lounge to accommodate open gatherings. In the main auditorium, lighting, color, and texture all draw the eye toward the speaker's stage.

Project Name: Anwar Gargash Diplomatic Academy, United Arab Emirates

Office Name: Shape Architecture Practice + Research

Office Website: www.shape.ae

Social Media Accounts: <https://www.instagram.com/shape.architecture/>

<https://www.facebook.com/ShapeArchitecture/>

https://twitter.com/shape_arch

Contact email: publication@shape.ae

Firm Location: Sharjah, United Arab Emirates

-

Completion Year: 2021

Gross Built Area: 18000 m²

Project Location: Abu Dhabi, United Arab Emirates

Program / Use / Building Function: Educational / Institutional

-

Lead Architects: Abdulla Al Shamsi, Ali Torabi

Interior Designers: Khaider Plaza, Christine Zacheria, Hamideh Ranjbar

Team: Muzammil Contractor, Mohammed Khader, Walid Boudegga, Ibrahim Batcha

Architect of record & Engineering: MIMAR Architecture & Engineering

Sustainability Consultant: EMS

Landscape Consultant: I-CON

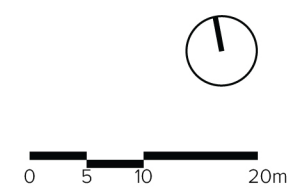
Lighting Consultant: CPLD

Photo Credits: Phil Handforth



SITE PLAN AT GROUND LEVEL

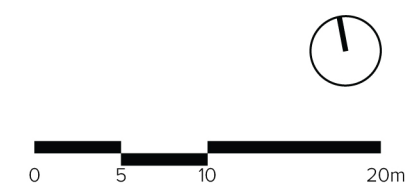
- | | | | |
|---------------------|-------------------------|--------------------------|-------------------------|
| 1 - Entrance | 8 - Meeting room | 15 - Supportg staff room | 22 - Pump room |
| 2 - Grand atrium | 9 - Clinic | 16 - Loading / Unloading | 23 - Garbage room |
| 3 - Innovation hub | 10 - Multi-purpose hall | 17 - L V room | 24 - Generator room |
| 4 - Library | 11 - Majlis | 18 - Substation | 25 - Washrooms |
| 5 - Archive | 12 - Preperation room | 19 - High voltage room | 26 - Stairs / Elevators |
| 6 - Storage | 13 - Cafeteria | 20- CCTV room | 27 - Service / Storage |
| 7 - Assessment room | 14 - Kitchen | 21 - Telephone room | |

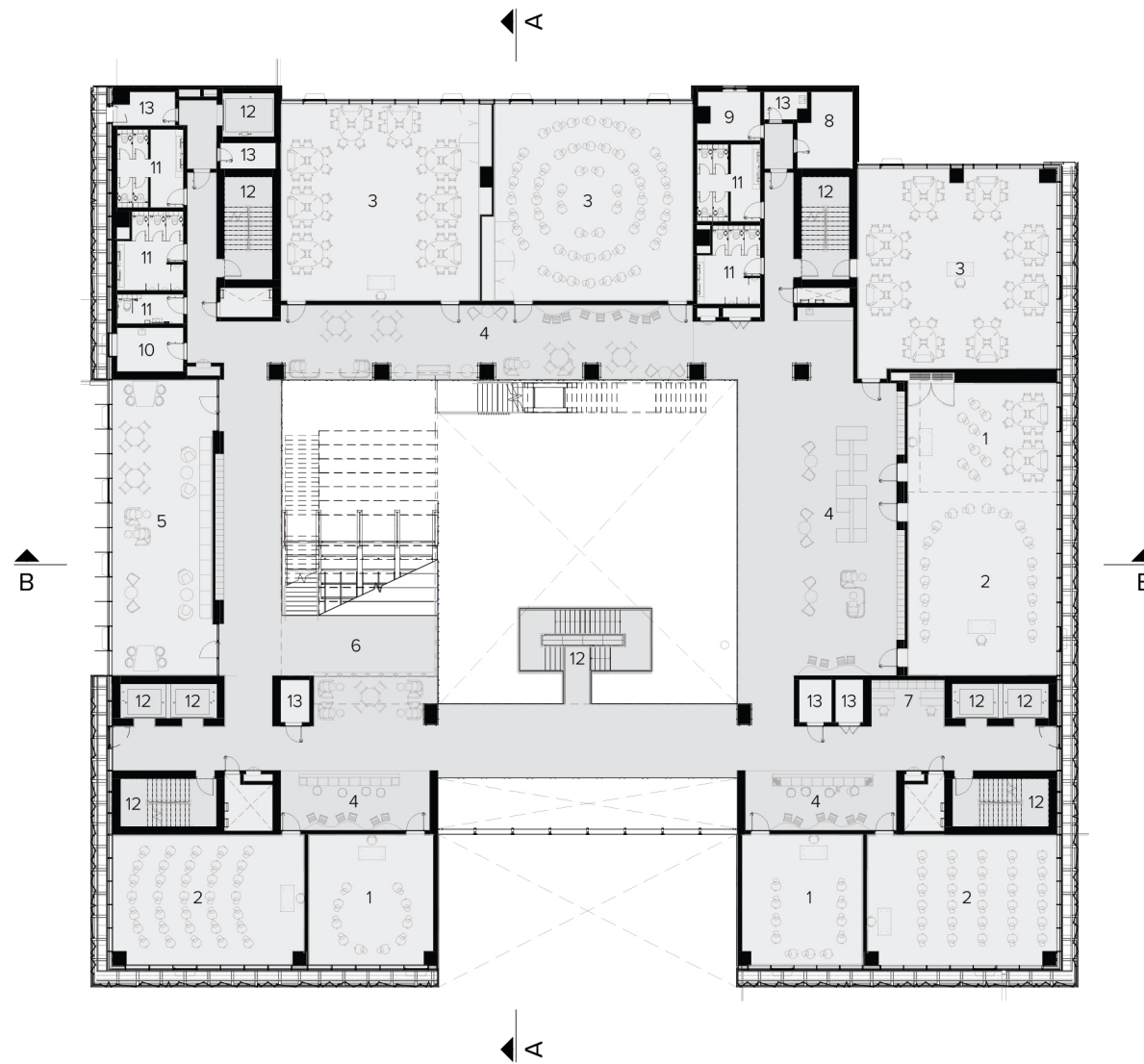




GROUND FLOOR PLAN

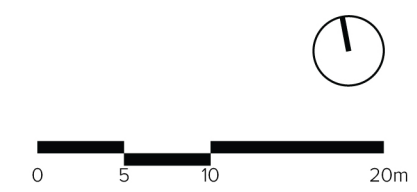
- | | | | |
|---------------------|-------------------------|--------------------------|-------------------------|
| 1 - Entrance | 8 - Meeting room | 15 - Supportg staff room | 22 - Pump room |
| 2 - Grand atrium | 9 - Clinic | 16 - Loading / Unloading | 23 - Garbage room |
| 3 - Innovation hub | 10 - Multi-purpose hall | 17 - L V room | 24 - Generator room |
| 4 - Library | 11 - Majlis | 18 - Substation | 25 - Washrooms |
| 5 - Archive | 12 - Preperation room | 19 - High voltage room | 26 - Stairs / Elevators |
| 6 - Storage | 13 - Cafeteria | 20- CCTV room | 27 - Service / Storage |
| 7 - Assessment room | 14 - Kitchen | 21 - Telephone room | |

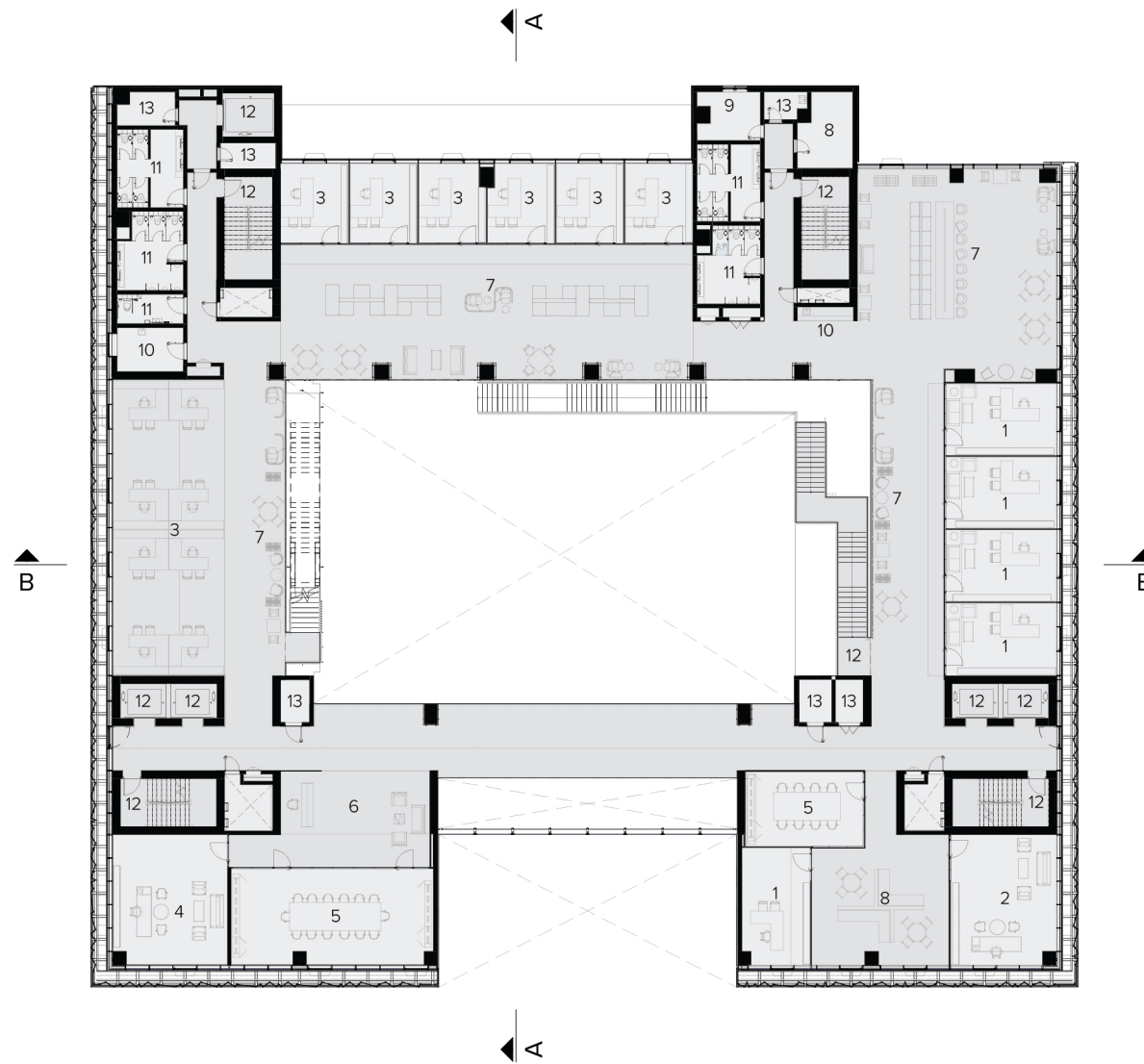




FIRST FLOOR PLAN

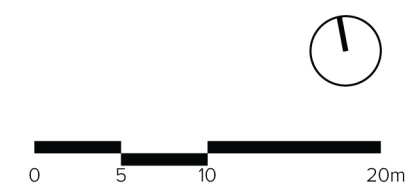
- | | |
|-----------------------|-------------------------|
| 1 - Small classrooms | 8 - Archive |
| 2 - Medium classrooms | 9 - Clerk room |
| 3 - Large classrooms | 10 - Pantry |
| 4 - Waiting area | 11 - Washrooms |
| 5 - Student lounge | 12 - Stairs / Elevators |
| 6 - Student assembly | 13 - Service / Storage |
| 7 - Reading nook | |

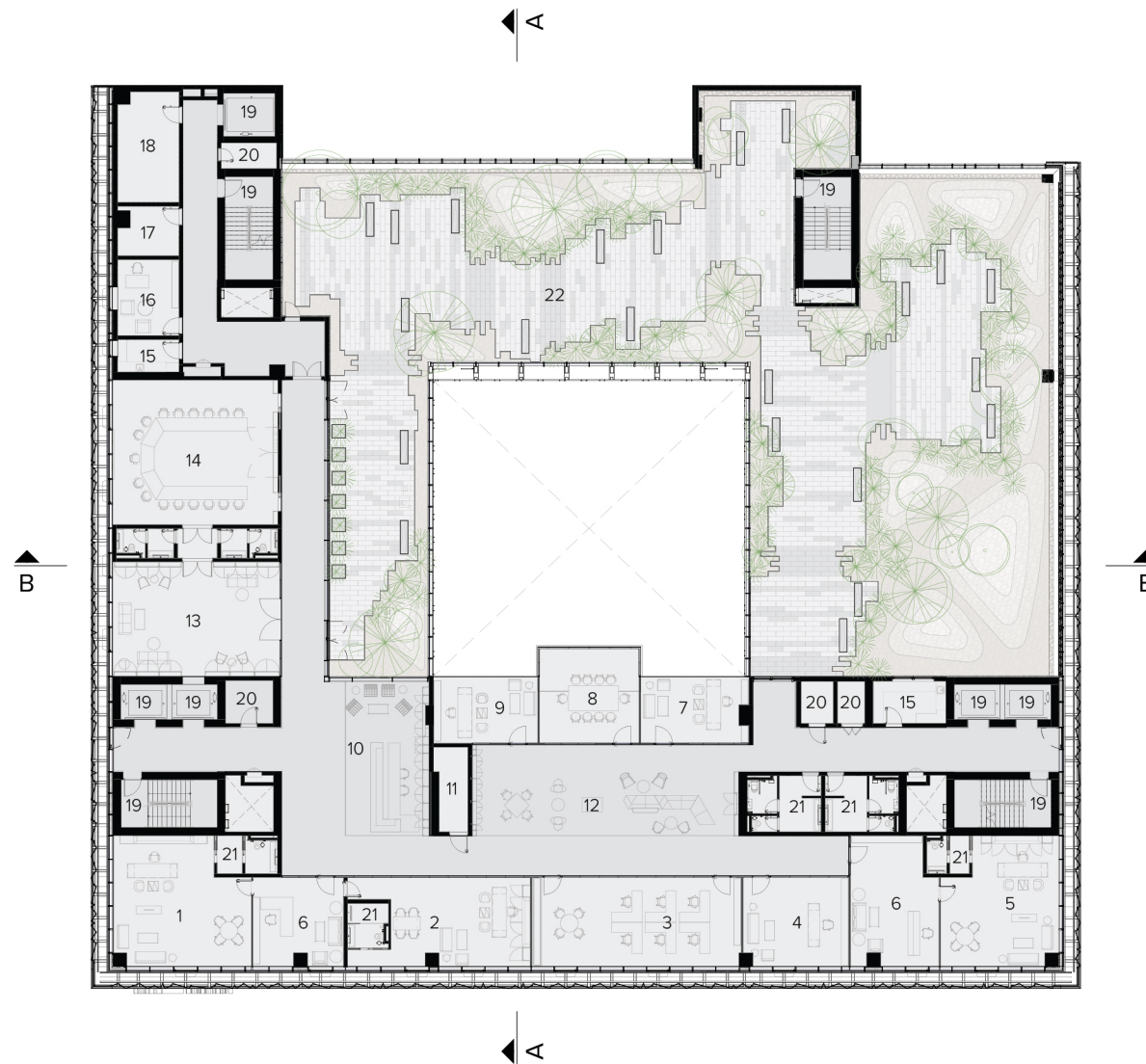




FOURTH FLOOR PLAN

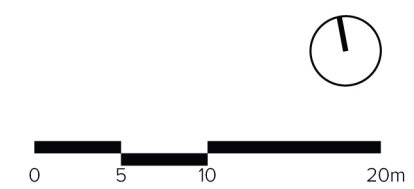
- | | |
|--|-------------------------|
| 1 - Executive training office | 7 - Common area |
| 2 - Director of executive training and student affairs | 8 - Archive |
| 3 - Research faculty office | 9 - Clerk room |
| 4 - Director of research | 10 - Pantry |
| 5 - Meeting room | 11 - Washrooms |
| 6 - Reception / Lounge | 12 - Stairs / Elevators |
| | 13 - Service / Storage |

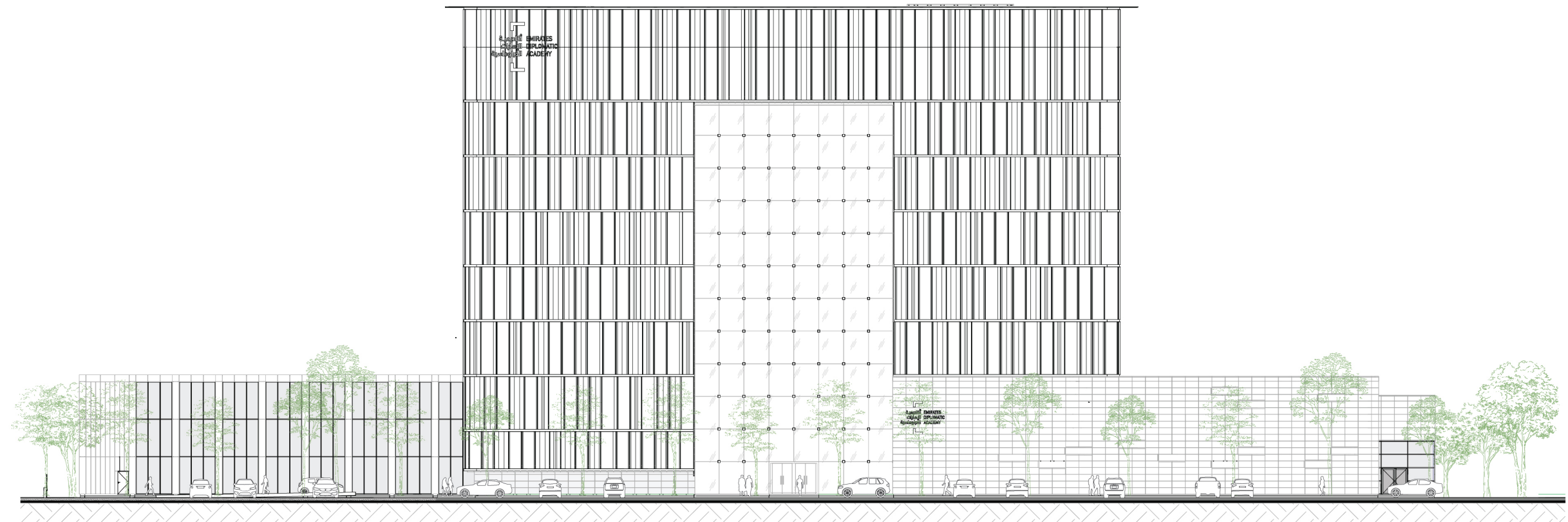




SIXTH FLOOR PLAN

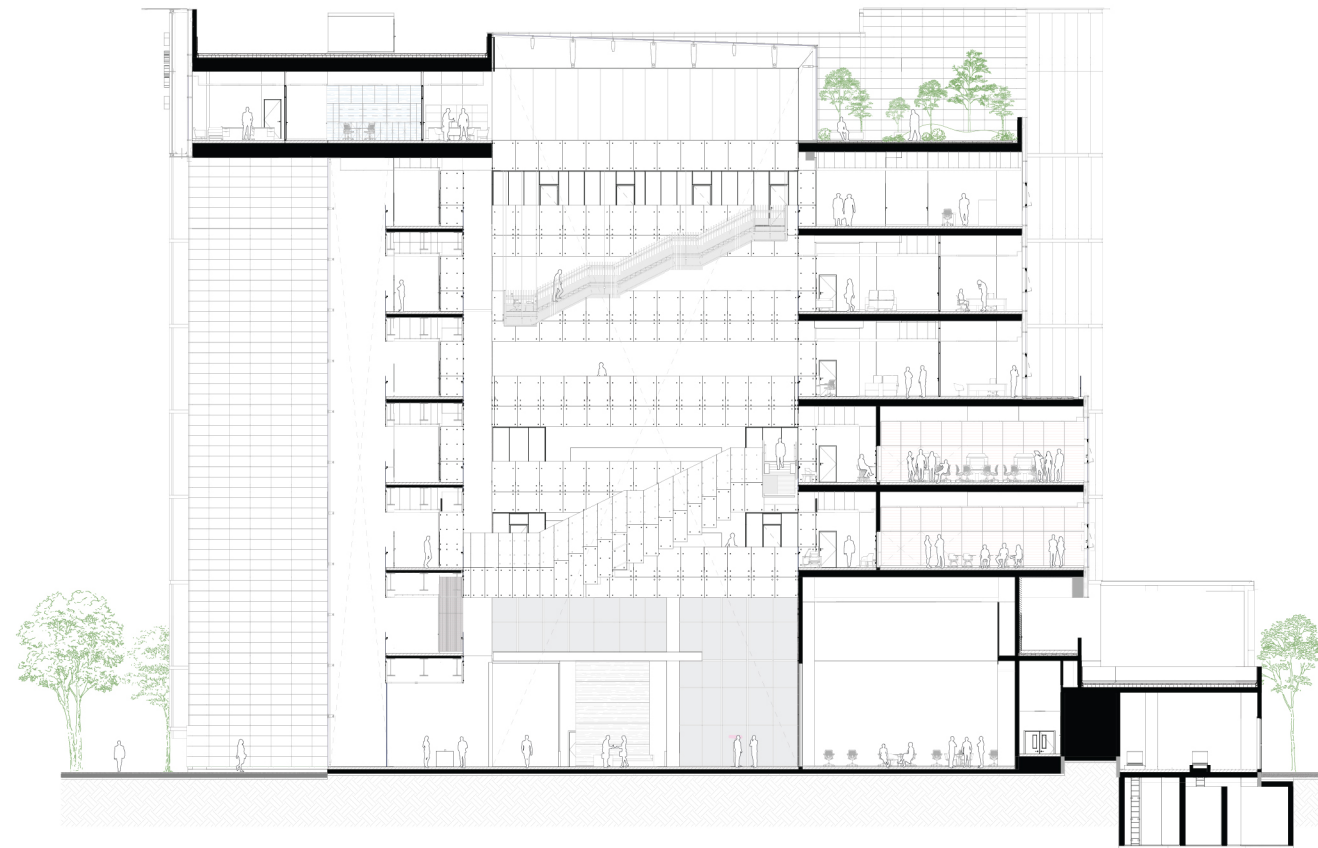
- | | | | |
|---------------------------------------|--|-------------------------------------|-------------------------|
| 1 - Chairman's office | 7 - Outsourced legal and compliance office | 13 - Majlis | 19 - Stairs / Elevators |
| 2 - Director general | 8 - Meeting room | 14 - Board of trustees meeting room | 20 - Service / Storage |
| 3 - Academic advisor's office | 9 - Project manager office | 15 - Pantry | 21 - Washrooms |
| 4 - Planning and development director | 10 - Reception | 16 - Clerk room | 22 - Terrace garden |
| 5 - Deputy director general | 11 - Printing | 17 - Telephone room | |
| 6 - Secretary / Lounge | 12 - Common area | 18 - Storage | |





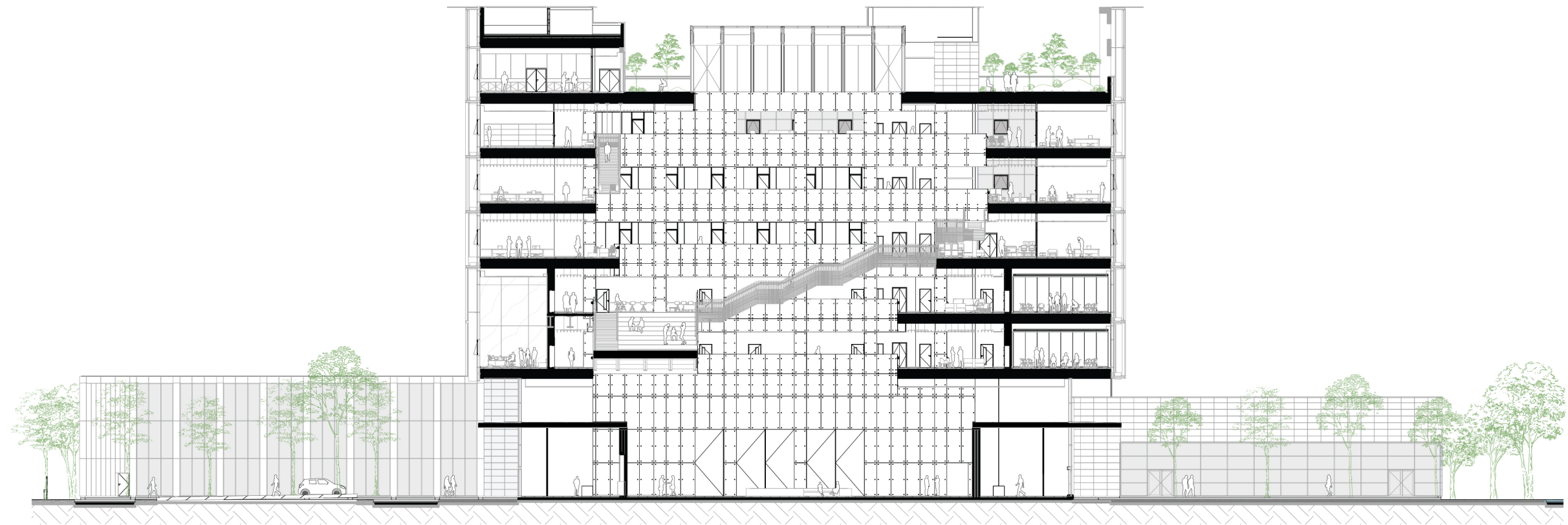
SOUTH ELEVATION





SECTION - A





SECTION - B

0 5 10 20m