



Fernando Fisbein Architect
Palmer Apartment



Palmer Apt_FFA_01
© Alan Tansey



Palmer Apt_FFA_02
© Alan Tansey



Palmer Apt_FFA_03
© Alan Tansey



Palmer Apt_FFA_04
© Alan Tansey



Palmer Apt_FFA_05
© Alan Tansey



Palmer Apt_FFA_06
© Alan Tansey



Palmer Apt_FFA_07
© Alan Tansey



Palmer Apt_FFA_08
© Alan Tansey



Palmer Apt_FFA_09
© Alan Tansey



Palmer Apt_FFA_10
© Alan Tansey



Palmer Apt_FFA_11
© Alan Tansey



Palmer Apt_FFA_12
© Alan Tansey



Palmer Apt_FFA_13
© Alan Tansey



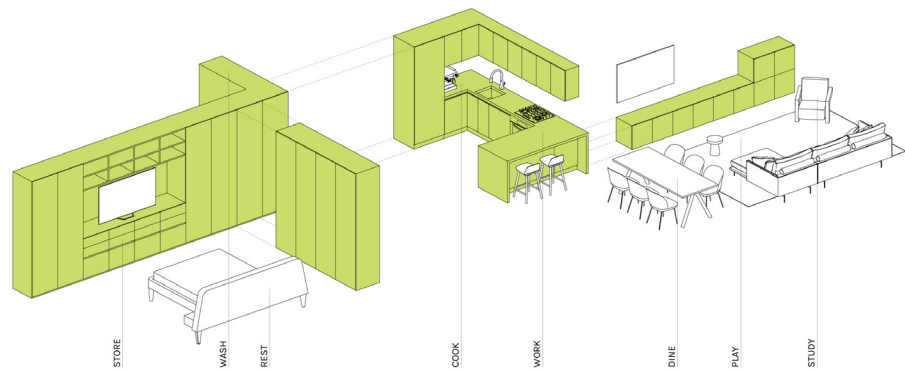
Palmer Apt_FFA_14
© Alan Tansey



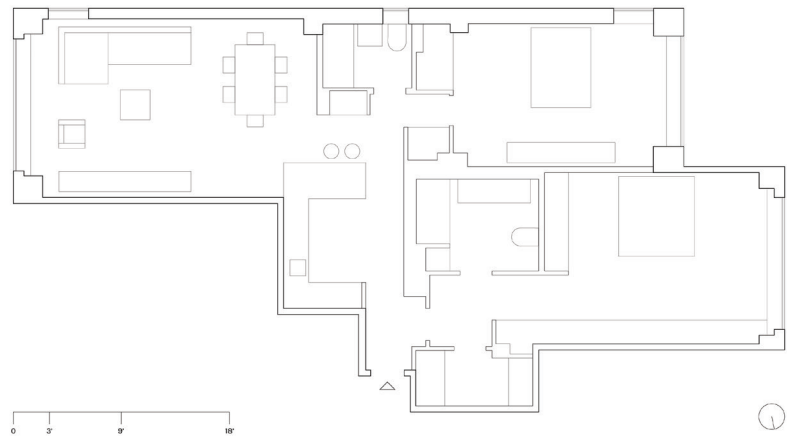
Palmer Apt_FFA_15
© Alan Tansey



Palmer Apt_FFA_16
© Alan Tansey



Palmer Apt_FFA_17
© Fernando Fisbein Architect



Palmer Apt_FFA_18
© Fernando Fisbein Architect



FFA_FF_PH_01
© Sasha Israel



FFA_FF_PH_02
© Sasha Israel



FFA_FF_PH_03
© Sasha Israel



FFA_FF_PH_04
© Sasha Israel

Palmer Apartment New York, NY, United States

A New York City Pied-à-Terre Organized by an Activity Wall.

Based in Los Angeles, the Palmer Apartment clients decided it was time to renovate their pied-à-terre in New York City. The couple, originally from the city, moved to California 30 years ago to work in the film and television industry. Now both retired, they set out to refresh their 1,350-square-foot home in the city's Upper East Side neighborhood.

The clients knew they wanted to remain living on the vibrant corner of 57th Street and Park Avenue while in Manhattan to spend quality time with their two sons based in the city—one an accomplished jazz bassist, and the other pursuing a business career with focus on sustainable efforts—and as a space to host friends. However, the existing apartment needed a big change. The previous homeowners combined a 1-bedroom apartment with the studio next door about 40 years ago. The original layout of the 1-bedroom was kept largely unchanged, while the studio was converted into the primary suite.

With their commitment to pursue a full gut renovation, the couple hired Fernando Fisbein, to guide how to best take advantage of the space, which, at the time, had an excessive number of partitions segregating uses, damaged flooring, and moldings, outdated incandescent lighting, mirror cladding in the bathrooms, little storage space, and no laundry equipment in the unit.

The design of the renovation creates an open, flowing space to provide a light and airy backdrop for the family's time together. New plain sawn white oak planks by LV Wood run through the living and dining areas as well as the kitchen to maintain uniformity. This connection between social areas is emphasized by the continuous ceiling design, which resolves the differing heights of the apartment's existing beams, and which integrates direct and indirect lighting throughout the space.

The millwork was conceived as a conceptual activity wall and acts as a central spine to the project, organizing the apartment's multiple functions. The active millwork was constructed with integrated lighting, incorporating storage, display, workspace, and support spaces at various points along its length. To create tabula rasa for the new design, all floors were leveled, trims were removed from the walls and ceilings, and custom radiator covers were installed.

The kitchen serves as a central hinge point in the apartment. Its partitions were completely removed, and a new peninsula projects into the dining area, increasing its usable space and creating a more integrated environment. Introducing an open kitchen allows natural light to reach into the core of

the apartment and provides a smooth transition between social and private areas. The new custom cabinetry fabricated from a white oak live flitch, and the countertops molded of white engineered stone, were constructed by Townhouse Kitchens. Above the peninsula floats a Bola Disc pendant by Pablo Studio, which echoes the lightweight playful lines of a Joan Miró artwork on the adjacent wall.

The living room's main seating area, which overlooks 57th Street, is anchored by the family's collection of modernist furniture. It includes a custom-designed USM Haller media console and bar and a coffee table by Isamu Noguchi, while the imbuia wood of a Kilin chair and a Mocho stool by Brazilian designer Sergio Rodrigues lend a tropical warmth to the room. The post floor lamp is by Earnest Studio and the art piece is by Paolo Riboldi. The couple wanted a dining space with an intimate connection to the living area. The small rectangular glass dining table by CB2, which can still host a formal dinner party, was paired with the iconic Wishbone Chairs with woven paper cord seats, by Hans Wegner. The vintage leg splint from 1942 by Charles and Ray Eames is a family heirloom.

The primary bedroom is a cozy spot to unwind. A projection screen is hidden above the niche and comes down for movie night. All custom built-in white oak storage cabinets were fabricated in Brooklyn by AT Concepts.

The bathroom in primary suite's was enlarged from the original layout. To keep it bright and minimal, the bathroom is lined with Crema Marfil marble and paired with custom vanities, fabricated in white oak by AT Concepts. The existing layout of the secondary bathroom was maintained, but the finishes and fixtures followed the same aesthetics as the primary suite's bathroom.

The second bedroom was refreshed with new materials and lighting. This space doubles as a music and meditation room. The Platform Bench is by George Nelson, the Lina swivel chair is by Hlynur Atlason, the Nordic II bedside tables are by Ethnicraft Design Team, and the AJ Table Lamps are by Arne Jacobsen.

Short Text

On the vibrant corner of 57th Street and Park Avenue, Manhattan, this 1,350 SF pied-à-terre is designed as a quiet island of softness. The renovation creates an open, flowing space to provide a light and airy backdrop for the family's time together. New plain sawn white oak planks run through the living and dining areas as well as the kitchen to maintain uniformity. This connection between social areas is emphasized by the continuous ceiling design, which resolves the differing heights of the apartment's existing beams, and which integrates direct and indirect lighting throughout the space.

The millwork was conceived as a conceptual activity wall and acts as a central spine to the project, organizing the apartment's multiple functions. The active millwork was constructed with integrated lighting, incorporating storage, display, workspace, and support spaces at various points along its length. To create tabula rasa for the new design, all floors were leveled, trims were removed from the walls and ceilings, and custom radiator covers were installed.

The kitchen serves as a central hinge point in the apartment. Its partitions were completely removed, and a new peninsula projects into the dining area, increasing its usable space and creating a more integrated environment. Introducing an open kitchen allows natural light to reach into the core of the apartment and provides a smooth transition between social and private areas. The new custom cabinetry was fabricated from a white oak live flitch, and the countertops molded of white engineered stone.

The living room's main seating area is anchored by the family's collection of modernist furniture. Its adjacent dining space provides an intimate connection to the living area with a small rectangular glass dining table, which can still host a formal dinner party. The primary bedroom is a cozy spot to unwind—a projection screen is hidden within the millwork and comes down for movie night. The storage cabinets are all custom built in white oak. The primary bathroom is lined with Crema Marfil marble to keep it bright and minimal. The second bedroom was refreshed with new materials and lighting—this space doubles as a music and meditation room.

Project Data

Project Name: Palmer Apartment

Location: New York, NY, United States

Year of Design: 2022

Year of Construction: 2023

Area: 1,350 SF (125 m²)

Architect: Fernando Fisbein Architect

MEP Engineer: Palma Design

Expeditor: Somma Design & Consulting

Specifications: Construction Specifications

Renderings: BS ARQ

General Contractor: AT Concepts

Kitchen Contractor: Townhouse Kitchens

Project Items

Living

- Custom-designed media console and bar: USM Haller, 1961.
- Sofa: Dresden Sofa, Rove Concepts.
- Pillow: Vero Pillow, EQ3.
- Coffee Table: Noguchi Table, Isamu Noguchi, 1948.
- Armchair: Kilin Chair, Sergio Rodrigues, 1973.
- Stool: Mocho Stool, Sergio Rodrigues, 1954.
- Rug: Graham Rug, Anu Gupta, 2016.
- Floor Lamp: Post Floor Lamp, Earnest Studio, 2020.
- Table Lamp: Mini Glo-Ball, Jasper Morrison, 2003.
- Leg Splint, Charles and Ray Eames, 1942.
- Painting: Charles Levier.
- Painting: André Brasilier.

Dining

- Chairs: CH24 Wishbone Chair, Hans Wegner, 1949.
- Table: Silverado Table, CB2.
- Painting: Paolo Ridolfi, 2007.
- Painting: Bernard Cathelin.
- Vase: Boniface Vessel, EQ3.

Kitchen

- Pendant: Bola Disc, Pablo Studio, 2017.
- Painting: La lutte rituelle, Joan Miró, 1964.
- Coffee Maker: Chemex, Peter Schlumbohm, 1941.
- Fruit Bowl: Pebble Bowl, Shelley Simpson, 1999.
- Stools: Tractor Stool, Craig Bassam, 2000.
- Refrigerator/Freezer: Thermador.
- Cooktop: Miele.
- Oven: Wolf.
- Microwave: Wolf.
- Dishwasher: Miele.
- Hood: Miele.
- Sink: Blanco.
- Faucet: Grohe.

Primary Bedroom

- Bedside Tables: Nordic II, Ethnicraft Design Team.
- Lamps: Matin Table Lamp, Inga Sempé, 2019.

- Lamp: Akari 5X, Isamu Noguchi, 1951.
- Lamp: Bellhop, Edward Barber and Jay Osgerby, 2018.
- Linen: Parachute.
- Sculpture: Willibrord Huijben.
- Vase: Finlandia Vase, Alvar Aalto, 1936.
- Painting: Sebastiaan Bremer, 2017.

Secondary Bedroom

- Bedside Tables: Nordic II, Ethnicraft Design Team.
- Lamps: AJ Table Lamp, Arne Jacobsen, 1957.
- Linen: Parachute.
- Bench: Platform Bench, George Nelson, 1946.
- Armchair: Lína Swivel Chair, Hlynur Atlason, 2018.
- Turntable: Sonos.
- Artwork: Carlos Martins, 1986.

Primary Bathroom

- Towels: Citizenry.
- Faucets: Toto.
- Sinks: Kohler.
- Showerhead: Duravit.
- Bath Spout: Duravit.
- Bathtub: MTL.
- Accessories: Kohler.
- Toilet: Toto.
- Medicine Cabinet: Robern.

Secondary Bathroom

- Sink: Kohler.
- Showerhead: Kohler.
- Accessories: Kohler.
- Toilet: Toto.
- Medicine Cabinet: Robern.

General

- Door Lever Handles: Knud Holscher.
- Roller shades: Hunter Douglas.
- Recessed Lighting: Lucifer.
- Wall plates: Lutron.

About

Fernando Fisbein Architect was established in New York in 2020. The practice's work is devoted to the concept and details of every project, in order to achieve solutions that are architecturally, socially, and intellectually meaningful.

Always mindful of context, understood in the broadest sense, Fernando Fisbein Architect strives to reinforce in its projects a sense of belonging—to the people, to the place, and to the moment that we live in—embracing diversity and history while expanding the range of contemporary expression.

Fernando Fisbein is a licensed architect in the United States and Brazil, and a member of the American Institute of Architects. The studio is a certified MBE in New York State.

Fernando holds a Masters in Advanced Architectural Design from Columbia University, New York, US, a Masters in Art History from Escola de Música e Belas Artes do Paraná, Brazil, and a Bachelors in Architecture and Urbanism from the Universidade Católica do Paraná, Brazil.

Prior to starting his own practice, Fernando worked under the mentorship of Peter Eisenman, Sir Nicholas Grimshaw, Enrique Norton, Jaime Lerner and Marcos Bertoldi, in groundbreaking projects of multiple scales, complexities and processes.

Awards

2023 Architizer A+ Award, USA
2021 AIA Tri-State Design Award, USA
2021 57th AIA Long Island Archi Award, USA
2009 Archiprix Prize, The Netherlands
2008 20th Opera Prima Award, Brazil

Studio

Fernando Fisbein Architect DPC
50 Underhill Ave #3
Brooklyn, NY 11238 USA
+1 (646) 404-2421
info@fernandofisbein.com