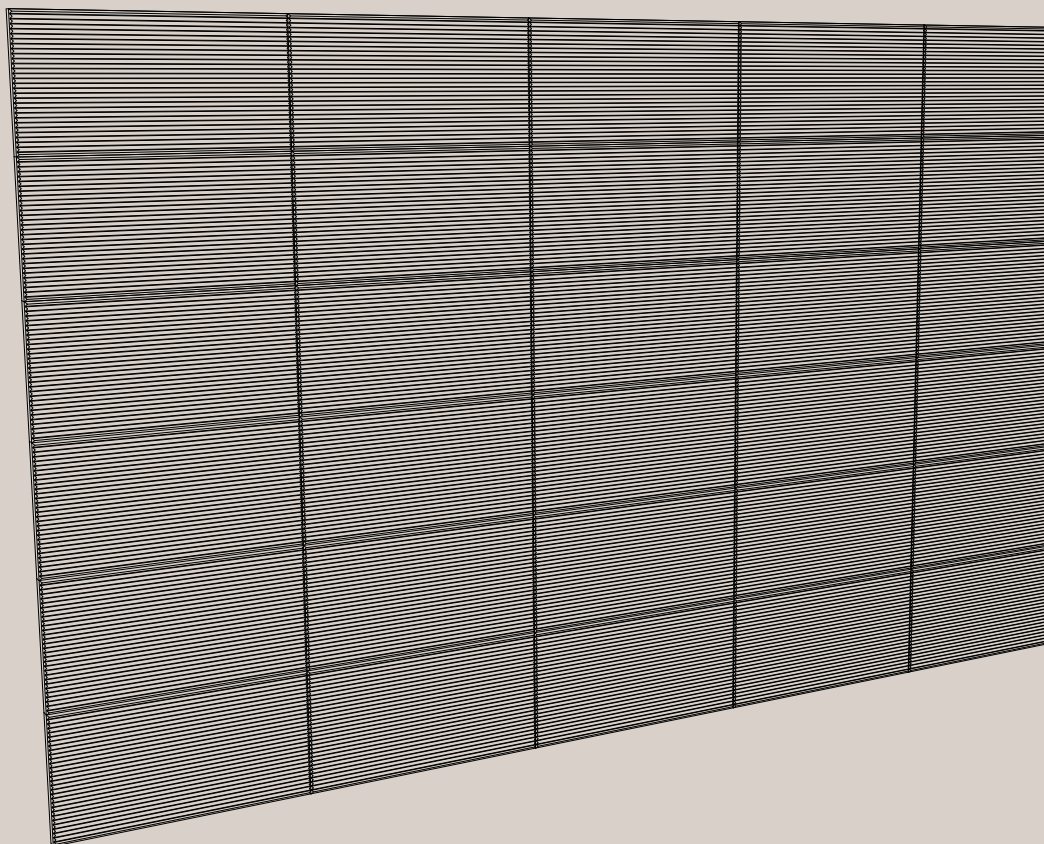


**IMPACT ACOUSTIC®**



# **Archisonic® Cotton** **Wall Tiles**

938.12.24.000.00

TECHNICAL DATA SHEET

# Archisonic Cotton Tile

## General Information



### Data

#### Applicable article numbers

938.12.24.000.00

#### Dimensions<sup>1</sup>

Length	600mm	23.6"
Height	300mm	11.8"
Thickness	24mm	0.9"

#### Material

Wall Covering Archisonic ® Cotton (100% circular) in 24 colors

#### Weight<sup>2</sup>

24mm / 0.95"	5.5 kg/m <sup>2</sup>	1.13 lbs/ft <sup>2</sup>
--------------	-----------------------	--------------------------

### Included

Archisonic Cotton  
Tiles (28 pieces)



Installation  
guide



Take back  
program



1 – all dimensions are nominal    2 – all weights are nominal

**IMPACT ACOUSTIC®**  
Archisonic Cotton Tile    20.10.23

(Switzerland)  
(USA)  
(Philippines)

connect@impactacoustic.com  
usa@impactacoustic.com  
philippines@impactacoustic.com

(+41) 41 566 55 55  
(+1) 646 918 1581  
(+63) 285 80 02 50

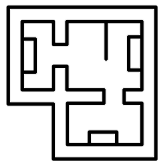
# **WeMakeAnImpact**

# Archisonic Cotton Tile

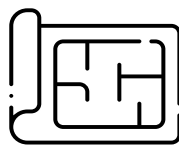
## Specification Guide

### 1 Prepare this information:

---



Project Area



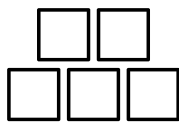
Plans



Other Considerations

### 2 Specify your Cotton Tile:

---



Quantity  
(multiple of 28 tiles - 5m<sup>2</sup>/ 53.8ft<sup>2</sup>)\*



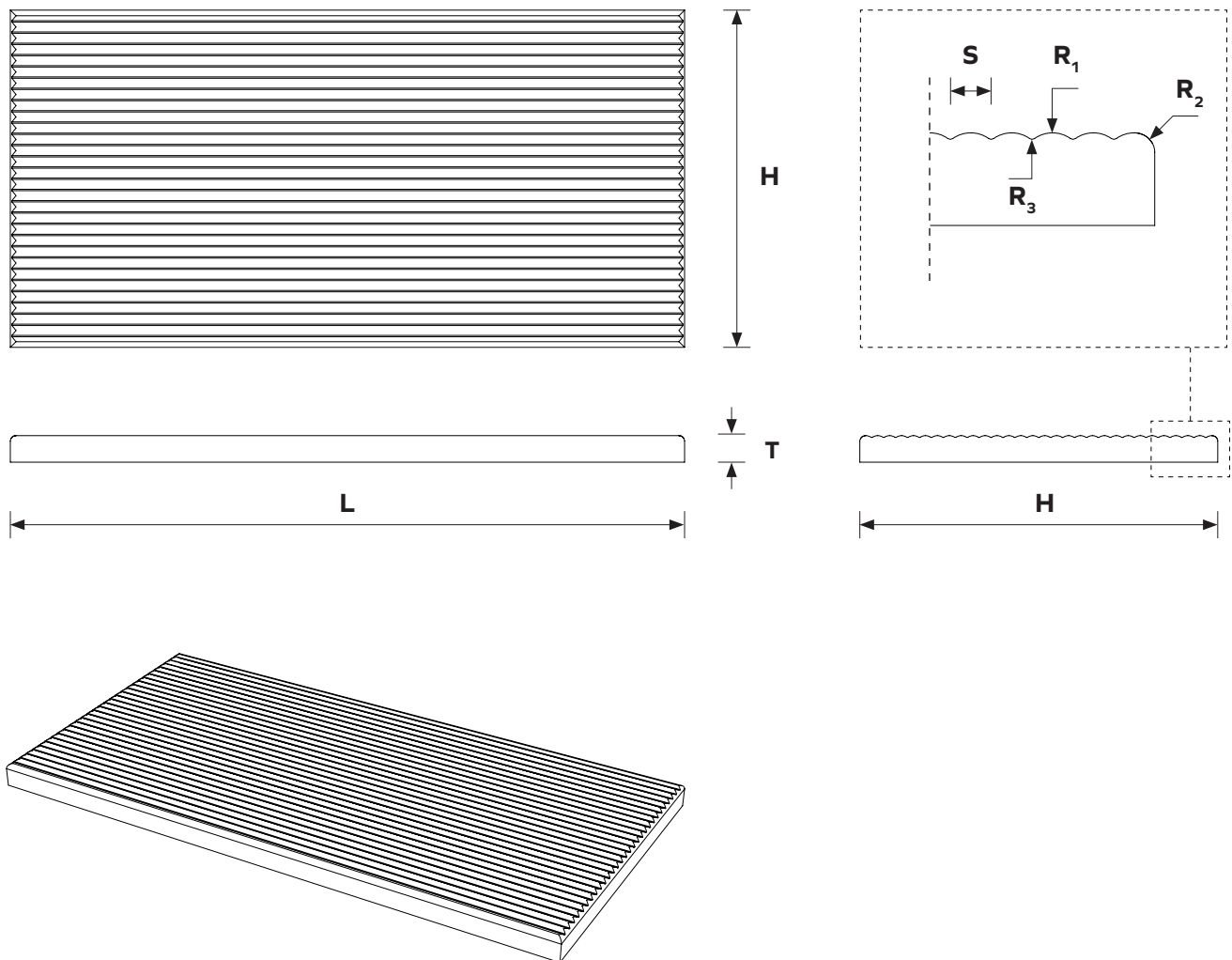
Color  
page 6-8

---

\* - Archisonic Cotton Tiles are supplied in a pack of 28 tiles (5m<sup>2</sup>/ 53.8ft<sup>2</sup>)

# Archisonic Cotton Tile

## Geometry Information



**Dimensions table**

<b>L</b>	Lenght	600mm	23.6"
<b>H</b>	Height	300mm	11.8"
<b>T</b>	Thickness	24mm	0.9"
<b>S</b>	Spacing	10mm	0.39"
<b>R<sub>1</sub></b>	Radius	7mm	0.27"
<b>R<sub>2</sub></b>	Radius	5mm	0.2"
<b>R<sub>3</sub></b>	Radius	1mm	0.05"

all dimensions are nominal

# Archisonic Cotton Tile

## Installation Overview

### 1

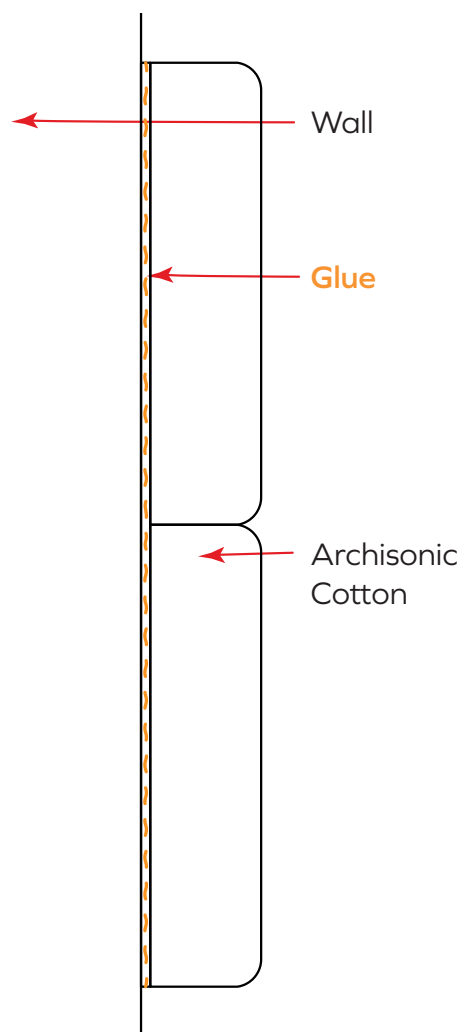
Before starting, carefully read the general instructions on page 3 and the guidelines on the use.

### 2

Draw the fundamental guidelines for the construction of the pattern on the application surface (we recommend always starting from a continuous vertical or horizontal line, when possible)

### 3

Apply the tiles to the wall, taking care to carefully follow the established pattern (follow the instructions on applying the glue)



Impact Acoustic recommends the use of Pattex No More Nails and assumes no responsibility for non-recommended glues or the use of other fixing systems.

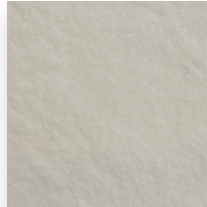
# ARCHISONIC®

## Colours

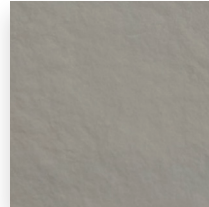
### Neutrals

24 mm

Neither warm nor cool, this group features three tones of Shadow. Designer White, as the cleanest white available is an essential standalone colour.



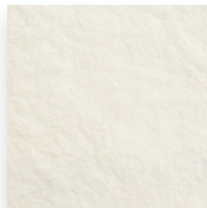
Shadow  
**20**



Shadow  
**30**



Shadow  
**50**

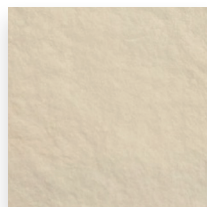


Designer White  
**00**

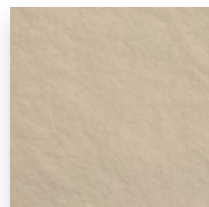
### Warm Neutrals

24 mm

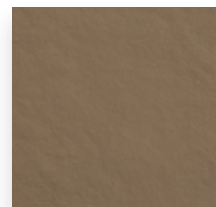
A timeless and classic warm neutral scale represented by three tones of Flax.



Flax  
**10**



Flax  
**30**



Flax  
**50**

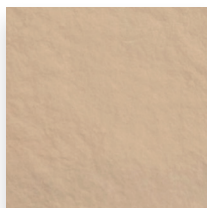
# ARCHISONIC®

## Colours

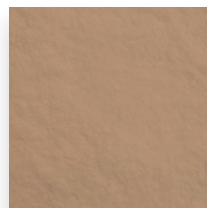
### Yellows+Oranges

24 mm

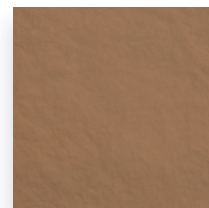
A duo tone of Wheat and three tones of Almond create a small group of yellows and oranges.



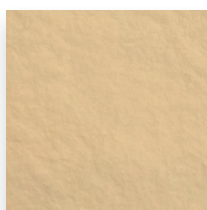
Almond  
**20**



Almond  
**30**



Almond  
**40**



Wheat  
**30**

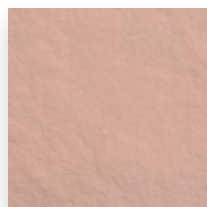


Wheat  
**50**

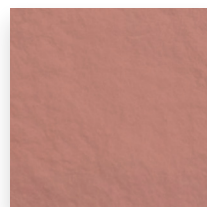
### Reds+Pinks+ Purples

24 mm

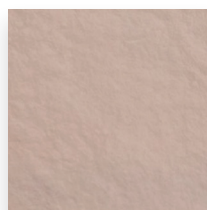
Featuring a duo tone of Rose and a duo tone of the shaded red, Pigeon.



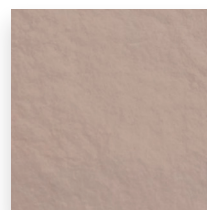
Rose  
**20**



Rose  
**50**



Pigeon  
**20**



Pigeon  
**30**

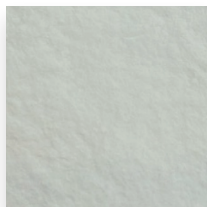
# ARCHISONIC®

## Colours

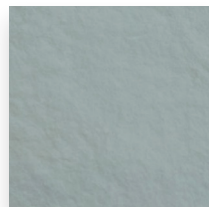
### Blues

24 mm

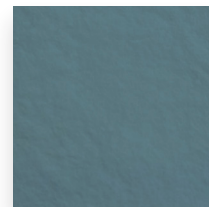
A classic, easy blue scale represented by three tones of Denim.



Denim  
**10**



Denim  
**30**

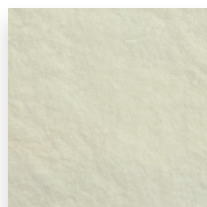


Denim  
**40**

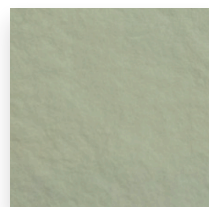
### Greens

24 mm

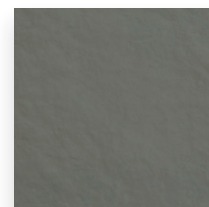
A duo tone of the fresher Aloe and three tones of the more shaded Sage create a commercial group of greens.



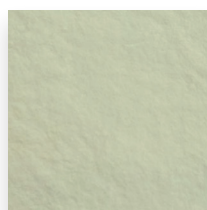
Sage  
**10**



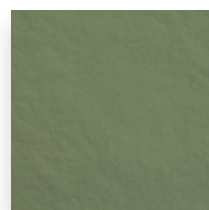
Sage  
**30**



Sage  
**50**



Aloe  
**30**



Aloe  
**50**



# ARCHISONIC®

## Cotton

### Density

250kg/m<sup>3</sup>

15.6lbs/ft<sup>3</sup>

(+/-10%)



EN 15102: 2007 + A1: 2011  
0497

### Tile thickness

24mm

0.94"

(+/-10%)

### Composition

73% cotton cellulose, 26% mineral components  
(micronized kaolin, colouring earths, fireproof salts),  
<1% acrylic resin

### Fire rating

**B-s1, d0**

**Class 1**

EN ISO 13823:2010

(tested with Pattex adhesive)

### VOC emission

**A+**

UNI EN ISO 16000-9: 2006 + ISO 16000-6: 2011

### Care instructions

Gently clean with a vacuum cleaner or a dry cloth.

Do not use water, soap or liquid detergents.

# Archisonic Cotton Tile

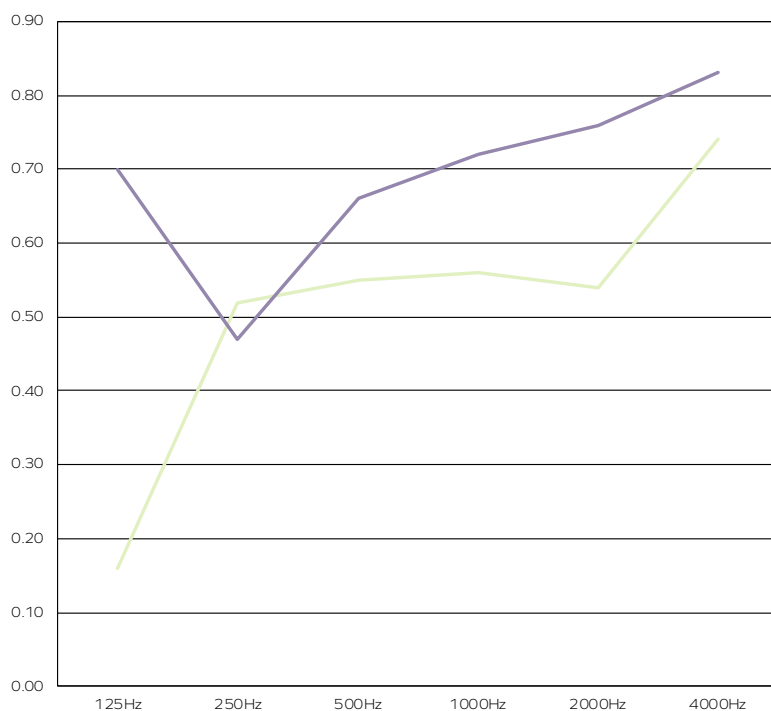
## Acoustic Performance

### Archisonic Cotton 24mm

Frequency (Hz)	125	250	500	1000	2000	4000
Archisonic Cotton 24mm	0.16	0.52	0.55	0.56	0.54	0.74
Archisonic Cotton 24mm with 50mm insulation	0.70	0.47	0.66	0.72	0.76	0.83

**Sound Absorption Coefficient ( $\alpha_s$ ) according to EN ISO 354**  
Hochschule Luzern – Prüfstelle Gebäudetechnik

**HSLU** Lucerne University  
of Applied Sciences  
and Arts



- Archisonic Cotton 24mm
- Archisonic Cotton 24mm with 50mm insulation

The graph represents the sound absorption coefficients ( $\alpha_s$ ) in the third octave band center frequencies. Measurement used Pink Noise as excitation signal in a reverberant room.

# Archisonic Cotton Tile

## Additional Information

### Online Resources

A variety of resources are available online for all of our products. Please visit the product's page for more information.



CAD files



Spec sheets and  
Installation Guide



Color families



Instruction  
videos



Associated  
products specs.

### Ordering Process

Our experienced team of Project Consultants will guide and support you throughout the order process. We fulfill the majority of our orders in as little as 21 days<sup>1</sup> from your first point of contact, allowing you to focus on what truly matters to you.



Contact our  
consultant

Quote<sup>1</sup>

1-2 day



Order Confirmation

Production<sup>1</sup>

2-3 weeks



Dispatch

Transit

location-dependent



Delivery

### Contact Us

Ready to make an impact? We are just an email or call away to discuss your project and answer any question.



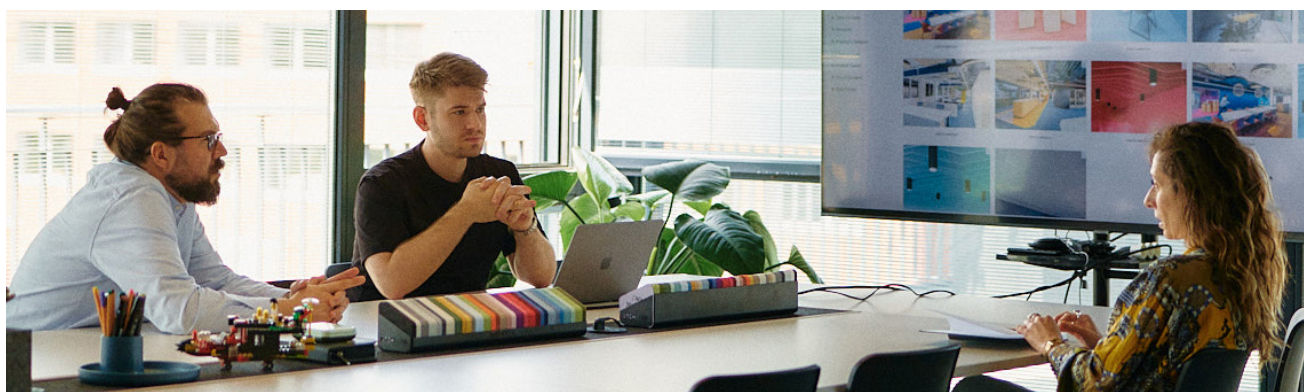
+41 41 566 55 55



connect@impactacoustic.com



Online form



<sup>1</sup> - Quote and Production times may vary.

**IMPACT ACOUSTIC®**  
Archisonic Cotton Tile 20.10.23

(Switzerland)  
(USA)  
(Philippines)

connect@impactacoustic.com  
usa@impactacoustic.com  
philippines@impactacoustic.com

(+41) 41 566 55 55  
(+1) 646 918 1581  
(+63) 285 80 02 50

#WeMakeAnImpact

**#We  
Make An  
Impact**

[connect@impactacoustic.com](mailto:connect@impactacoustic.com) | [www.impactacoustic.com](http://www.impactacoustic.com)