

LOCATION : CHENNAI

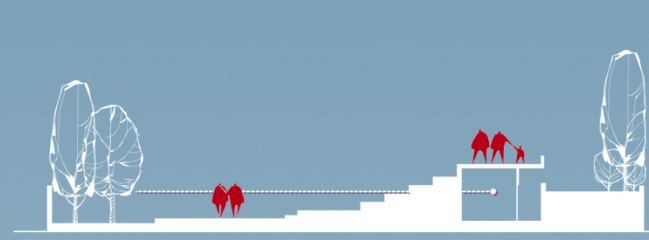
SITE AREA : 540 SQ.M

BUILT AREA : 760 SQ.M

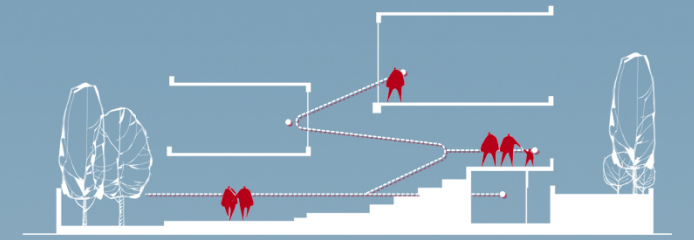
TYPOLOGY : INSTITUTION

VALUE : 667,000 USD

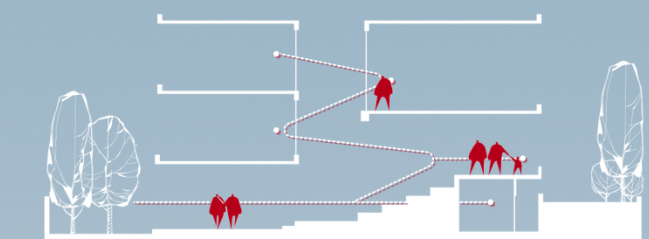
The Learning Community at Quest is located on a 540 sqm piece of land, about 300 m from the sea-front in Besant Nagar, Chennai. It is a learning centre for children between the ages of 8 to 16 years. The centre acts as a learning and interaction space for children who are largely home-schooled or for those who follow the 'unschooling' pattern of education which involves teaching children based on their interests rather than a set curriculum.



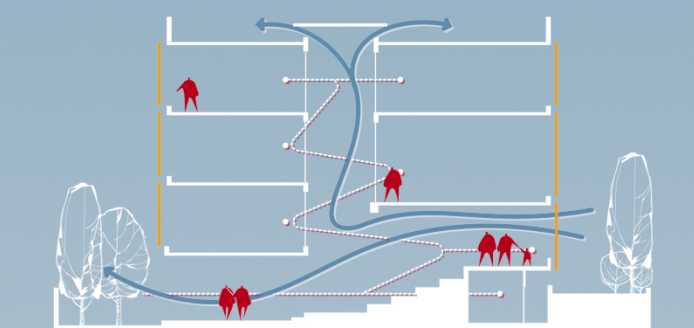
The learning centre has been designed as a collection of free-flowing volumes that give a feeling of space and visual connectivity. One gains access into the building through a tree lined front court that has a set of steps and a ramp.



One enters the rectangular building footprint in the centre into an atrium-like volume that opens up to the full height of the building, with an amphitheatre rising to the right and a stepdown gallery space to the left.



The amphitheatre connects the arrival space to the library above as one seamless volume overlooking the raised garden on the south. Classrooms are stacked on either side of the central atrium and a metal staircase that winds its way up connecting all the levels.



The Southern side of the site is raised in the form of a garden in order to harness the South breeze while also taking advantage of a wind channel caused by the extended road beyond the site. A spiral staircase comes out of the building face that leads up to a roof top cafeteria.

