

WINELANDS VILLA

Cape Town, South Africa





● Cape Town

WINELANDS VILLA

Winelands Villa is situated in the Gentleman's Estate at Val de Vie in the Paarl-Franschhoek Valley, a luxury smallholding concept along the banks of the Berg River offering views of the Drakenstein, Simonsberg, and Paarl Rock Mountains within a landscape of rehabilitated fynbos.

The estate's aesthetic guidelines specify a contemporary interpretation of Provençal and Cape vernacular architecture, prescribing pitched roofs, exposed timber rafters, and a material palette of timber cladding, off-shutter concrete, and natural stonework offset with white plastered walls.

Within this framework, ARRCC refined the original client brief for an H-shaped footprint to create a cruciform arrangement of five overlapping squares: one central square for the living and dining areas with an interlocking square on each corner for the bedrooms, plus one for the kitchen and utilities.

The geometry of the floorplan opens the interior to views in all directions. It also creates sheltered terraces on either side of the central living area so that at any given time, at least one would be sheltered from the prevailing winds.

Floor-to-ceiling glass sliding doors pocket into the walls so that, when the weather allows, the views "flow" right through the living space as if it were a pavilion. At the same time, it creates a series of green pockets and courtyards around the house, so that it appears "stitched" into the landscape. The high, pitched ceiling creates a grand, double-volume entrance and a lofty interior space for the lounge, which, together with clerestory windows, responds to the vastness of the surrounding landscape.

Variations in ceiling height balance the proportions with sensitivity to human scale, creating cozier, more intimate spaces within an interconnecting open-plan arrangement, resulting in a casually luxurious, flowing sense of interior space. The lounge is centered on a bespoke, hand-chiselled sandstone plinth for the fireplace. Its raw materiality is complemented with simple, natural materials such as timber and screed floors and raw off-shutter concrete.

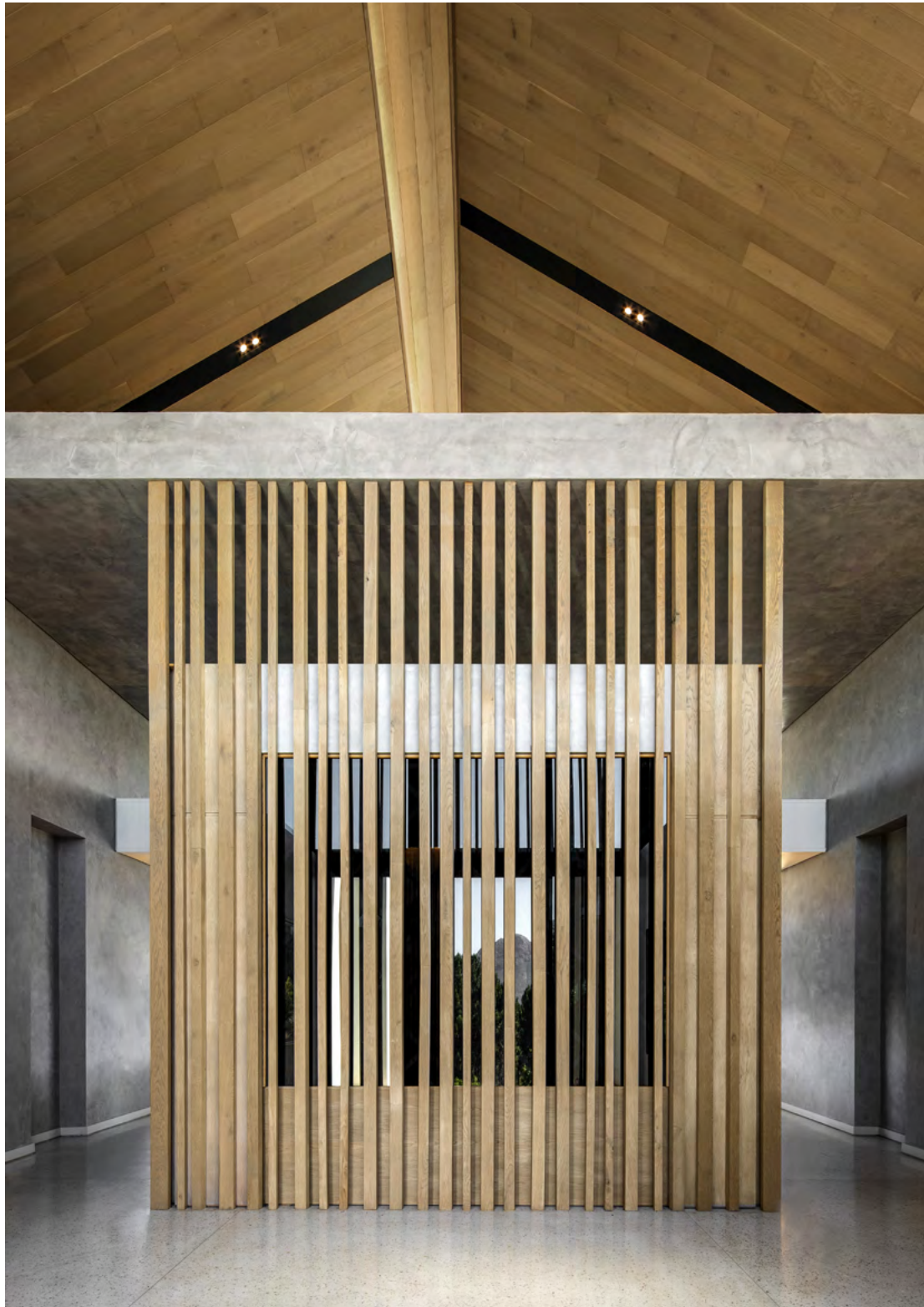
In other instances, ARRCC intentionally refined the aesthetic requirements. The exposed roof beams are clad in timber in a sleek, modern interpretation of rustic beams and the pitched ceiling has a dynamic, asymmetrical detail near its apex.

The relationship between the living space and entertainment terraces has a resort-like quality, with a floating island over the swimming pool, and a long, elegant canopy that folds down to provide shelter and privacy while framing views of the landscape and sky. Such extensions emphasize the horizontal lines of the architecture and balance the high central volume.

The en suite bathroom off the master bedroom is designed to create a sense of unmediated connection with its natural setting. Here, too, the symmetrical design creates a balanced interior that emphasizes the view as a focal point.

While this home remains respectful of the estate guidelines, its complex response to its setting and the client's lifestyle requirements demonstrates that stylistic limitations need not hamper a rich and unique architectural response.





Left The double volume arrival area, featuring pitched roofs with concealed lighting detail.
Right The arrival areas flows into the main kitchen, and passes the enclosed wine cellar room.



The main kitchen dually flows into the living room area and outdoor section, with 360 views of the surrounding mountains.





The double-volume entertainment section features a lounge and dining area. The pool is situated to the right of the image, and the garden courtyard is featured on the left side.



Left The pitched roofs and concealed lighting are echoed in the lounge area. The space is complimented with OKHA's Gloob Armchairs.
Right The space also features a bespoke, hand-carved rock fireplace.



The central dining room, featuring bespoke OKHA Balducci Carver Dining Chairs.



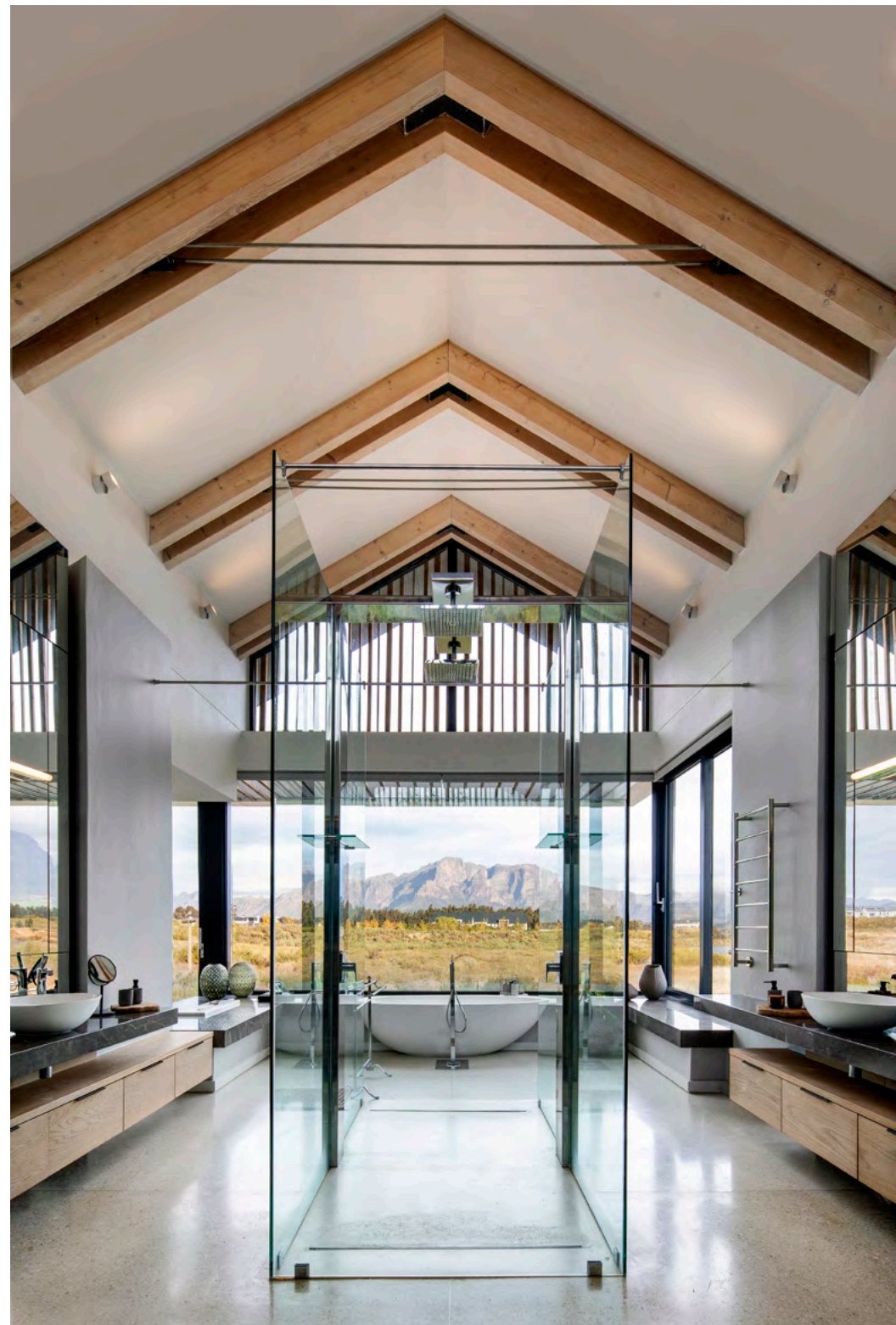
Outdoor entertainment area, accompanied by surrounding mountain views.



Floating island over the swimming pool, and a long, elegant canopy that folds down to provide shelter and privacy while framing views of the landscape and sky.



The main suite, accompanied by an outdoor terrace and surrounding mountain views.



The main bedroom ensuite is equipped with a freestanding bath, and a symmetrical design, to elevate the exterior facing views.



Children's play pen room.

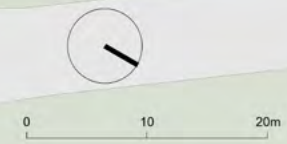
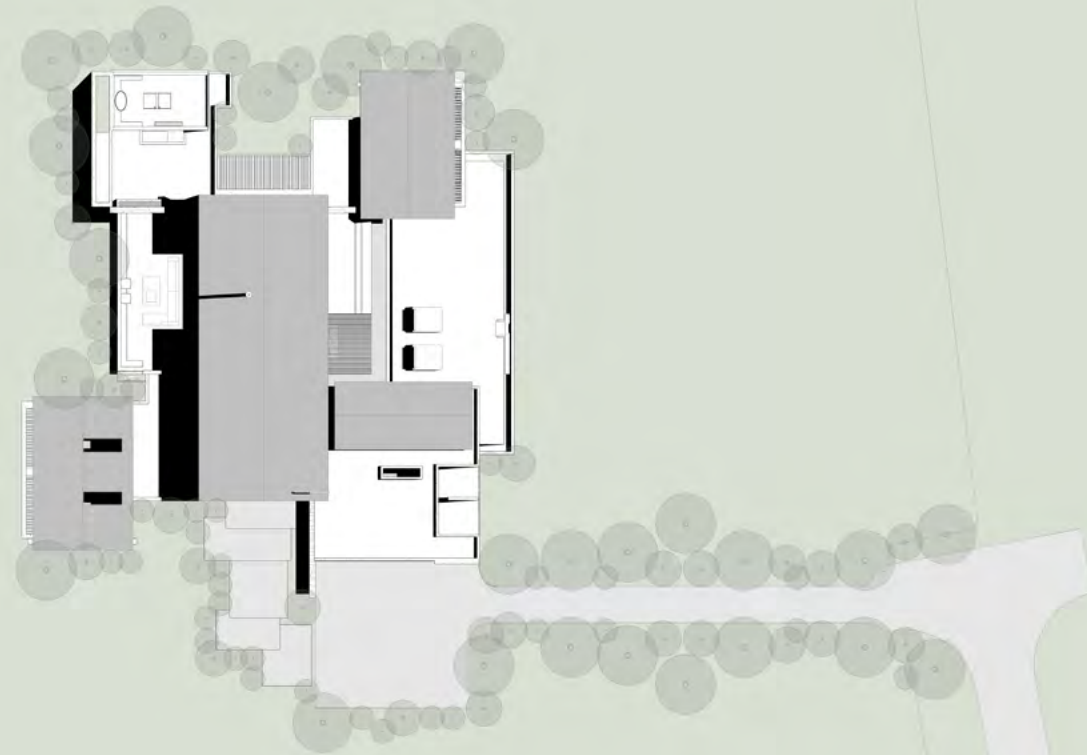


Left Secondary bedroom with accented pitched roofs.
Right Outdoor Courtyard that is an extension of the central double volume entertainment area.





DRAWINGS



SITE PLAN
ZA_CPT_VDV_GE13_IA

ARRCC



L0_GROUND FLOOR
ZA_CPT_VDV_GE13_IA

ARRCC



CREDITS & CONTACTS

Project Name	Winelands Villa
Project Location	Cape Town, South Africa
Design Architect	ARRCC and SAOTA
Interior Architecture Design Team	Michele Rhoda, Leigh Daniels, Maajidah Sait Stefan Antoni
Site Architect	Warren Labuschagne
Photographer	Adam Letch
Copy by	Graham Wood

For more information

Tenille Peckham
Media Manager ARRCC
+27 21 468 4400
tenillep@arrcc.com