

# BUNKIE ON THE HILL



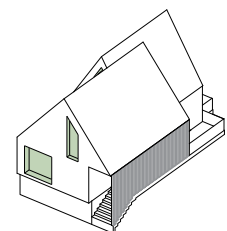
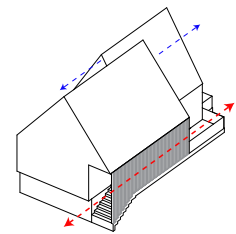
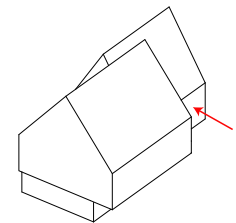
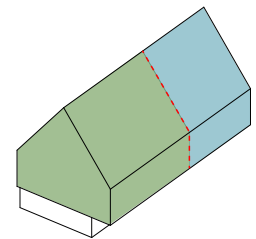
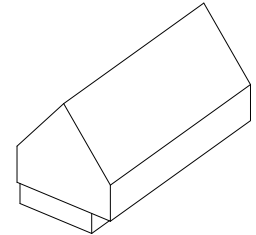
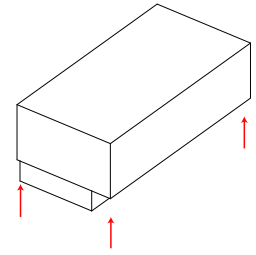
DUBBELDAM ARCHITECTURE + DESIGN



# BUNKIE ON THE HILL



02





# BUNKIE ON THE HILL



**Situated high above a collection of multi-generational cottages below, Bunkie on the Hill serves as a quiet haven in the trees for family members to retreat and re-connect with nature.**

The smallest in a collection of cabins scattered across four family properties, a Bunkie on the Hill serves as a space of respite for a family-oriented client in Muskoka. Designed by Dubbeldam Architecture + Design, the Bunkie is tucked into the trees at the top of a steep slope, providing a quiet space away from the action of the multi-generational family cottages below.

A contemporary interpretation of the traditional A-frame shape evokes the quintessential cabin in the woods, differentiated by shifted roof volumes. Reminiscent of the overlapping layers of rock in the surrounding landscape, the split roof design features two intersecting gables that create opportunities for window openings where the roof volumes separate. These geometric windows allow for curated views of the treetops on one side and lake below on the other and invite natural light to flood the interior of the cabin, reflecting off the sharp roof angles and creating dramatic lines and shadows. The cabin's split roof design also generates distinct elevations on either side – a tall, narrow, glazed facade facing the lake, and a wider, more opaque elevation facing the forest, with a cut out for a covered entrance on the west side. Located midway along the side façade, the cabin's entrance features a walkway with a slatted cedar screen on one side which echoes the tree trunks seen through framed views at each end.



# BUNKIE ON THE HILL



04

The cedar slats are animated by the ever-changing west light that filters through its openings, producing a dynamic interplay of light and shadows that enhance the richness of the material and creating an engaging experience for visitors.

The Bunkie's interior is functional despite its compact size. Small nooks throughout contain storage shelves or built-in benches. Each interior space is designed to offer framed views of the surrounding forest or the lake below. The upper loft area includes a built-in desk with a view down to the living space on the first level and the vast lake beyond, as well as an extra space for sleeping. The bedroom is located at the rear and features a large window that offers immersive views of the forest.

Natural materials were chosen to complement the rustic landscape that surrounds the Bunkie. Greyed wood siding contrasts the natural cedar soffits and screen that frames the entrance, sitting atop the raw, board-formed concrete base. Interior materials include oak flooring, maple plywood, and cedar cladding, grounded by dark charcoal window frames, grey stone counters, and furniture that offers moments of

colour. Principal Heather Dubbeldam describes the variety of wood species that were used to differentiate the various planes in the space: "we used white wallboard to define the interior perimeter walls, internal partitions are clad in maple plywood, and the ceiling is delineated by Western red cedar slats, bringing even more of the surrounding forest inside," she notes.

Sustainable materials and construction methods were important to the client. The exterior walls have been thickened to serve as a passive insulator – boasting an R-value of over 40 – and include triple-glazed windows, making it possible to use a minimal heating system in the crawl space below. Flitch beams were utilized to eliminate any thermal bridges, despite the use of steel framing. To avoid the need for blasting, the Bunkie was raised above grade and its foundation constructed on top of the natural rock contours, allowing the structure to sit lightly on the landscape. Wood products used are FSC-rated and the few plumbing and light fixtures are low flow and low energy. Any patina of materials over time is intentional: as time passes the Bunkie blends back into its forested hill setting.





# BUNKIE ON THE HILL

Natural materials were chosen to complement the rustic context. Greyed wood siding contrasts the natural cedar soffits and screen framing the entrance, sitting atop the raw, board-formed concrete base.

05




# BUNKIE ON THE HILL



A slatted cedar screen spans the length of the west façade, concealing the entrance. At the front, an opening in the side wall allows access to a generous roof deck overlooking the lake.



# BUNKIE ON THE HILL

A photograph of a modern wooden structure, likely a bunkie or cabin, featuring a slatted screen and wooden steps. The structure is built with cedar slats, and the slatted screen is illuminated by warm, golden light filtering through the slats, creating a dynamic interplay of light and shadows. The structure is set against a backdrop of trees with autumn foliage. The overall aesthetic is warm and natural, blending with the surrounding environment.

The slatted screen echoes the tree trunks seen through framed views at each end. The cedar slats are animated by the ever-changing west light that filters through its openings, producing a dynamic interplay of light and shadows.

07



# BUNKIE ON THE HILL



Tucked beneath the upper loft area, an open kitchen offers the basics for cooking. Greystone limestone counters ground the space in contrast to the surrounding light wood tones and vaulted wood ceiling.

08



# BUNKIE ON THE HILL



A contemporary interpretation of the traditional A-frame shape, the lofted ceiling is delineated with Western red cedar boards. The living area features stunning views of the lake below through a triple-glazed opening.

09



# BUNKIE ON THE HILL



The vaulted roof maximizes space within the Bunkie's small footprint, creating a spacious feel with a lofty ceiling that connects both levels.



# BUNKIE ON THE HILL



The split roof design features two intersecting gables that create opportunities for window openings where the roof volumes separate, seen at eye-level from the upper loft. A built-in desk features views down to the living space on the first level and the lake beyond.



# BUNKIE ON THE HILL



Geometric windows allow for curated views of the surrounding landscape and invite natural light to flood the interior, reflecting off the sharp roof angles and creating dramatic lines and shadows.

12





# BUNKIE ON THE HILL



# BUNKIE ON THE HILL



14

The upper loft incorporates a pull-out bed, providing extra space for sleeping. Unique windows throughout the Bunkie allow for curated views of the surrounding landscape.



# BUNKIE ON THE HILL



15

Located at the rear for a more peaceful environment, the bedroom offers immersive views of the forest through a large picture window.



# BUNKIE ON THE HILL



16

The Bunkie's split roof design generates distinct elevations on each side of the structure – a tall, glazed facade faces the lake, and a wider, more opaque façade faces the forest.



# BUNKIE ON THE HILL



Tucked into the trees at the top of a steep slope, the Bunkie's warm cedar interior lights up like a lantern in the evening.

17

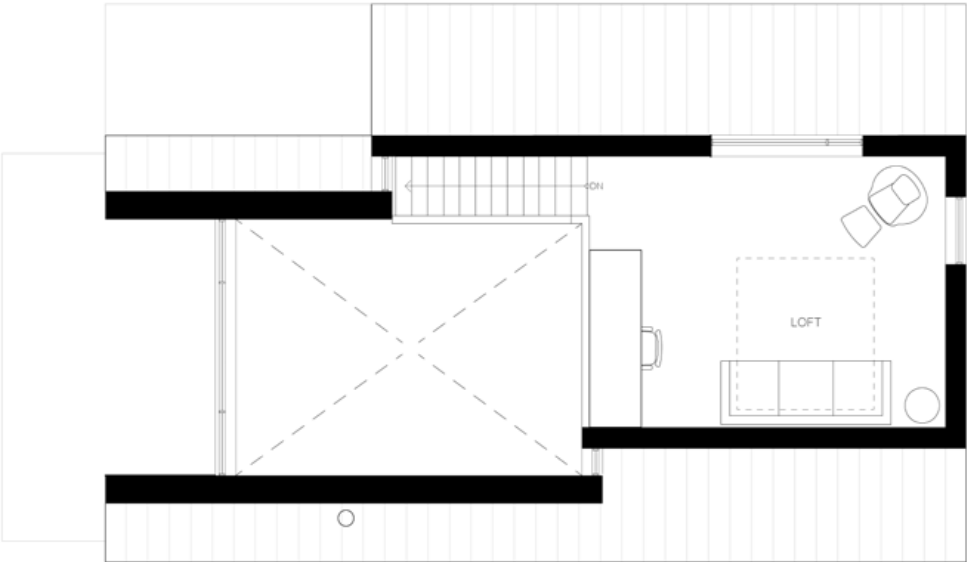


# BUNKIE ON THE HILL

## FLOOR PLANS



MAIN FLOOR PLAN



LOFT FLOOR PLAN





# BUNKIE ON THE HILL



## SOURCES

### Exterior

Fraser Woods Siding, semi transparent finish  
Clear Western, Red Cedar, Varathane oil finish  
Agway Metals, Ar25-standing seam metal roof  
Ipe deck boards

### Wood Flooring

European Oak, Tulum, wirebrush (Unik Parquet)

### Tile

Iseo Gris (Mettro Source)  
Progetto Ceramiche, bianco matte (Stone Tile)

### Millwork

Muskoka Custom Carpentry

### Light Fixtures

Lambert & Fils, Waldorf wall sconce (Klaus)  
Harlow 5, alder green (Schoolhouse)  
Pablo, Lana Mini Wall Light (Urban Mode)  
Rich Brilliant Willing, Pastille 1 Wayfind (TPL Lighting)  
Tech Lighting, Pitch Single Wall sconce (Lightform)  
Kuzco lighting, Casa Recessed Wall sconce (Dark Tools)

### Stone

Greystone limestone  
Corian, glacier white  
4004 Raw Concrete (Caesarstone)

### Plumbing

Supplied by Taps Bath  
Silgranit Linus faucet (Blanco)  
Silgranit Precis sink (Blanco)  
Zin693 faucet (Zucchetti)  
Aquia IV toilet (Toto)  
Shower set (Riobel)

### Appliances

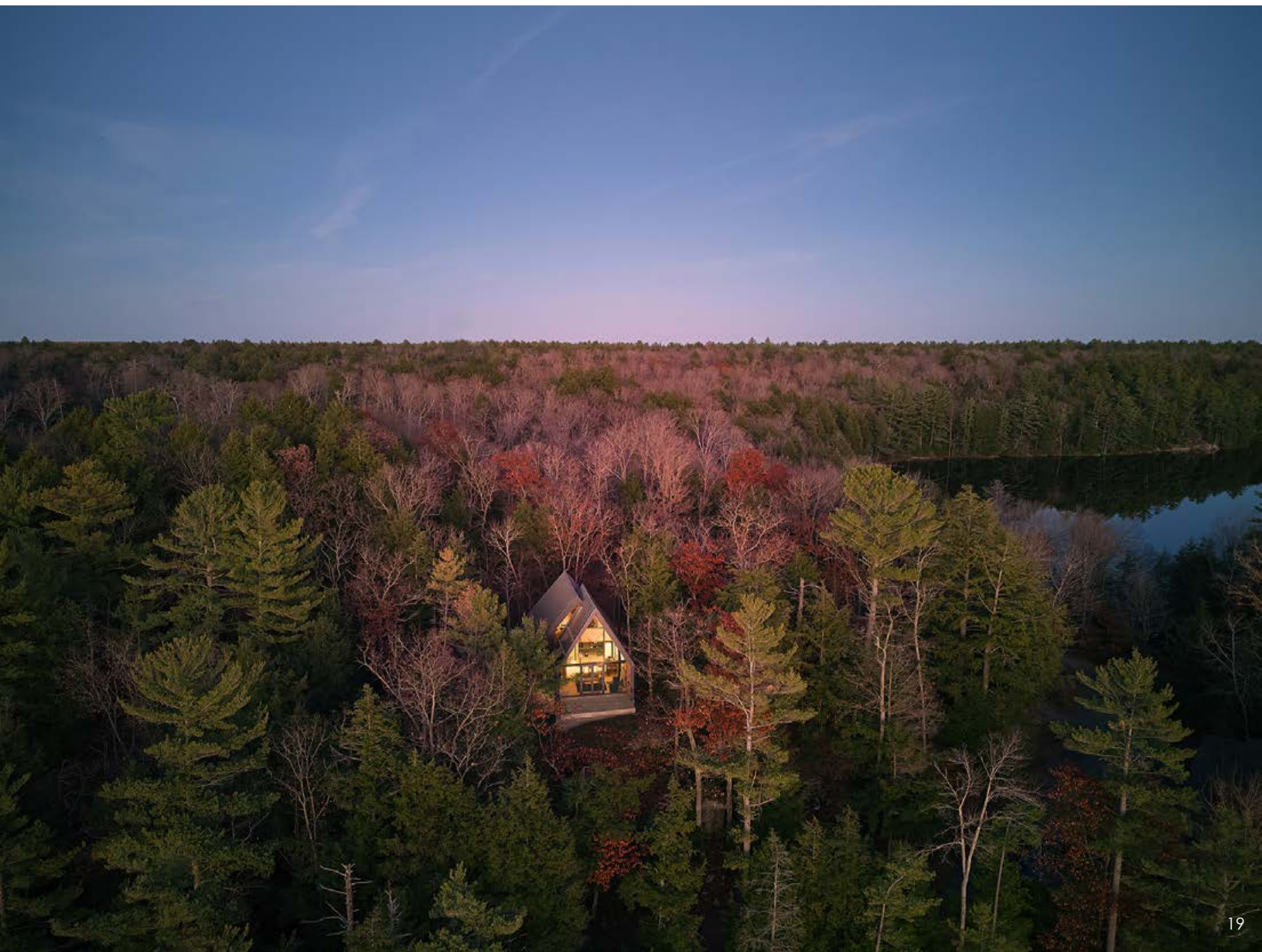
Refrigerator (Smeg)  
2-burner Induction Cooktop (Fisher & Paykel)  
Range Hood (Fisher & Paykel)  
Dishwasher (Fisher & Paykel)  
Convection Speed Oven (Fisher & Paykel)  
F 600 Firelight CB wood stove, blue black enamel (Jotul)

### Furniture

Emeco Alfi counter stools (Klaus)  
Menu offset sofa (Klaus)  
Crescent swivel chair (West Elm)  
Ohm coffee tables (DWR)  
Eames molded plastic chair (Herman Miller)  
Tuck sofa (DWR)  
Nora Lounge Chair (DWR)  
Wade nesting coffee table (Crate & Barrel)  
Adirondack chair and Ottoman (DWR)



# BUNKIE ON THE HILL



19

## PROJECT CREDITS

Location: Muskoka, Ontario, Canada.

Size: 1,000 s.f. | 93 s.m.

Architecture/Interior Design: Dubbeldam Architecture + Design

Project Team: Heather Dubbeldam, Scott Sampson, Krystal Kramer

Photography: Riley Snelling, Andrew Snow (Image 13)

Contractor: HLD Muskoka

Consultants: Blackwell Structural Engineers

For more information, please contact: Kevin McIntosh

T. 416.913.6757 | E. [press@dubbeldam.ca](mailto:press@dubbeldam.ca)

[www.dubbeldam.ca](http://www.dubbeldam.ca)

Facebook, Instagram, Twitter: @DubbeldamArch

Dubbeldam Architecture + Design is a multi-disciplinary design studio committed to creating thoughtful projects that embody sustainable approaches. With a diverse portfolio incorporating a wide variety of project types, their work ranges from homes, multi-unit residential projects, workspaces, hospitality, and mixed-use buildings to landscape design and architectural installations.

Along with over 100 design awards and wide recognition in national and international publications, Dubbeldam is the recipient of the Canada Council for the Arts Professional Prix de Rome and the 2024 Architectural Practice Award from the Royal Architectural Institute of Canada, two of the highest honours for architectural practices in Canada. With a commitment to design excellence and a focus on sustainability and wellness in architecture, Dubbeldam is recognized for creating innovative, unique, and environmentally responsible design solutions for live, work and play.

Photos from this press kit are available for download on  
Dropbox: <https://tinyurl.com/23s9d4rc>

**DUBBELDAM ARCHITECTURE + DESIGN**