



---

# M45

---



*Photos ©Salem Mostefaoui*

---

**Villeurbanne, France**

---



## M45: A UNIFYING TRACE

Located in the heart of Villeurbanne's Mansart district—an area with a rich industrial heritage—M45 presents a bold, contemporary vision of the Productive City. This innovative project serves as a bridge between the city's industrial past and the evolving needs of modern urban spaces, seamlessly integrating commercial and production areas in a dynamic, multi-use environment.

### INDUSTRIAL HERITAGE, REIMAGINED

Rather than erasing history, M45 embraces and revitalizes it. Designed as a tribute to Villeurbanne's industrial legacy, the building pre-

serves key architectural elements while introducing a forward-thinking approach to urban functionality. Its hybrid structure merges the characteristics of a former industrial hangar with a refined, modern aesthetic—ensuring that history is not only acknowledged but celebrated in every detail of its construction.

### A COMPACT, ADAPTIVE DESIGN

M45 is conceived as a compact building, structured into three primary volumes with a minimal core. This layout optimizes space by mutualizing emergency exits, which are integrated into external walkways. These pathways create a distinct visual rhythm in the delivery courtyards while opening up sightlines at the heart of the block. Beyond enhancing accessibility and circula-





tion, this design fosters programmatic flexibility, allowing the building to accommodate a diverse mix of uses, from commercial and educational activities to residential and production spaces.

#### VERSATILE, FUTURE-PROOF SPACES

Designed with adaptability in mind, M45 offers reversible spaces that can evolve alongside its users' needs. The building's flexible architecture allows for easy reconfigurations, ensuring long-term viability across different functions. At the ground and first floors, small artisan workshops provide space for local craft and production, while the upper levels house offices and commercial units—both of which can be

repurposed for alternative uses as demands shift over time.

#### ESSENTIALIST ARCHITECTURE, MAXIMUM IMPACT

Defined by an essentialist architectural approach, M45 embodies a refined simplicity that prioritizes both function and form. The building's subdivision into smaller units facilitates direct access to the core of the block, encouraging permeability and connectivity. Each volume features a streamlined circulation core, complemented by interconnecting walkways that enhance movement and interaction—creating a dynamic, interconnected urban space.





## SEAMLESS INTEGRATION INTO THE URBAN FABRIC

Beyond its architectural innovation, M45 integrates harmoniously into the existing urban landscape, reinforcing the area's creative economy. By fostering small-scale production within the city, the project promotes a more compact, efficient urban model—where diverse functions coexist and complement one another.

### M45: A NEW VISION FOR THE PRODUCTIVE CITY

More than just a building, M45 stands as a testament to how intelligent design can honor history while embracing the future. By offering adaptable, reversible spaces within an essentialist framework, it redefines industrial heritage for contemporary needs. As a model of sustainable urban revitalization, M45 demonstrates how architecture can serve as a conduit between past and present—breathing new life into industrial landscapes while shaping the cities of tomorrow.

---

## M45

**Location:** Villeurbanne, France

**Date:** 2018 – 2023

**Client:** Promoval / Fontanel / 6 eme sens

**Area:** 5.000 m<sup>2</sup>

**Program:** Offices and commercial facilities

**Status:** Built

**Team Triptyque:** Guillaume Sibaud, Olivier Raffaëlli, Sébastien Tison, Damien Murat, Charlotte Ferreux, Théo Tostivint, Juliano Thomé, Bruna Teixeira, Kelly Comparsi, Luiz, Filipe Rampazio, Alex Perret

**Images:** Salem Mostefaoui

---



























































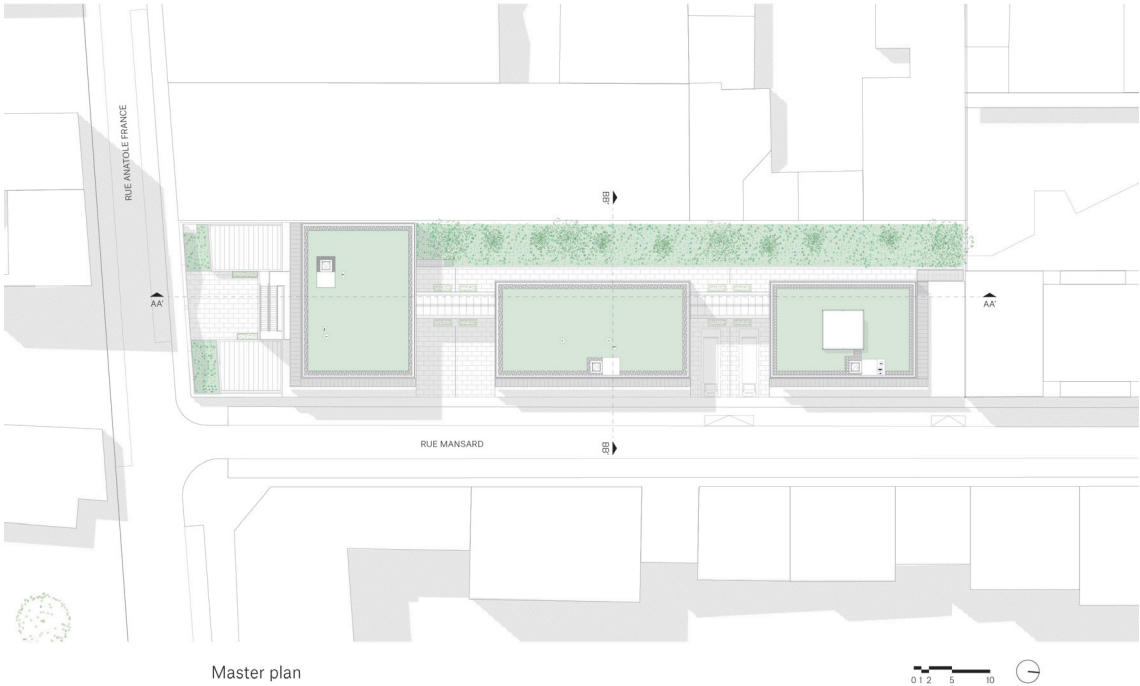






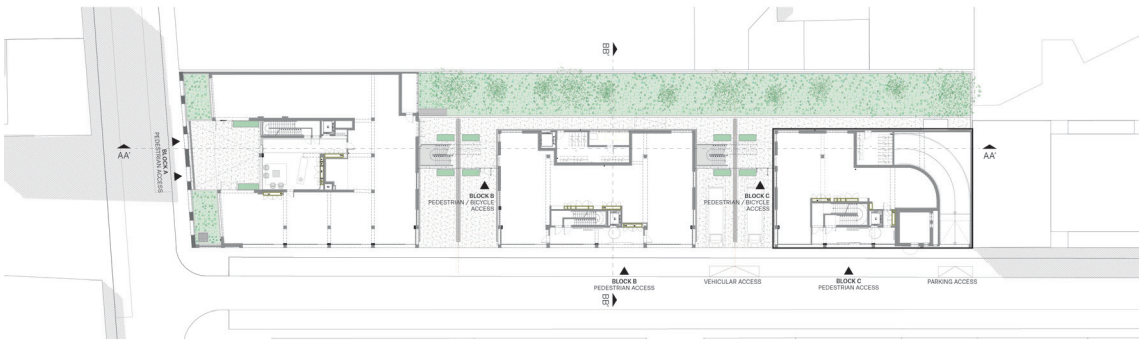






Master plan

M45  
Master Plan

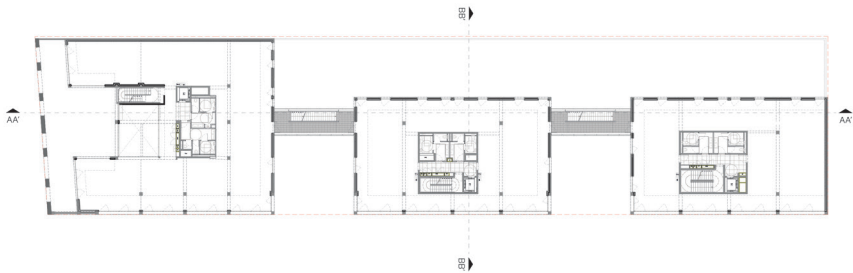


First floor plan



M45  
First floor plan

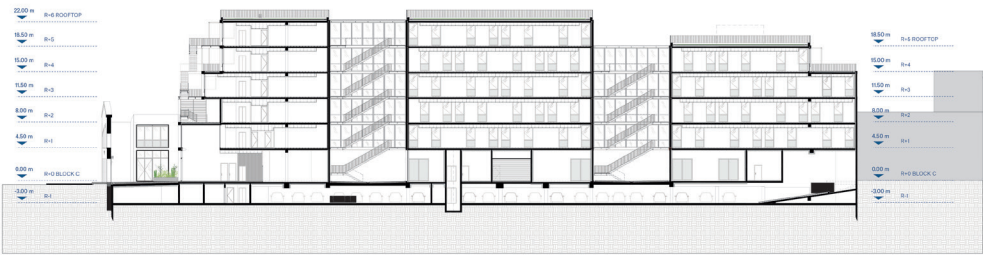




Second floor plan



M45  
Second floor plan

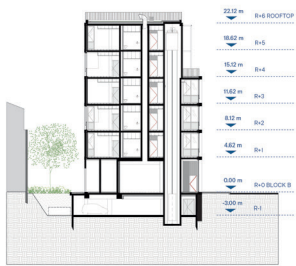


AA' Section



M45  
AA' Section





BB' Section



M45  
BB' Section



## **The Agency**

Triptyque is a French-Brazilian architecture and urbanism agency known for its naturalist and rationalist approach. It is led by Guillaume Sibaud and Olivier Raffaëlli, founding partners, trained at the Paris La Seine School of Architecture and the Paris Institute of Urbanism. Driven by the same interest in contemporary metropolises and the desire to confront other realities, they founded Triptyque agency in São Paulo in 2000 and in Paris in 2008. In more than two decades, Triptyque has been developing, in Latin America and Europe, public and private architecture, urbanism and interior projects in various

fields such as residential, corporate, education, hospitality, healthcare and research. In addition, the agency also took part in several exhibitions and biennials. Models of some of their designs have been included in museum collections, such the Center Pompidou in Paris and the Guggenheim Museum in New York. Triptyque has received numerous international awards and their work has been published in many countries.

### **Contact:**

Laura Guedes  
com@triptyque.com