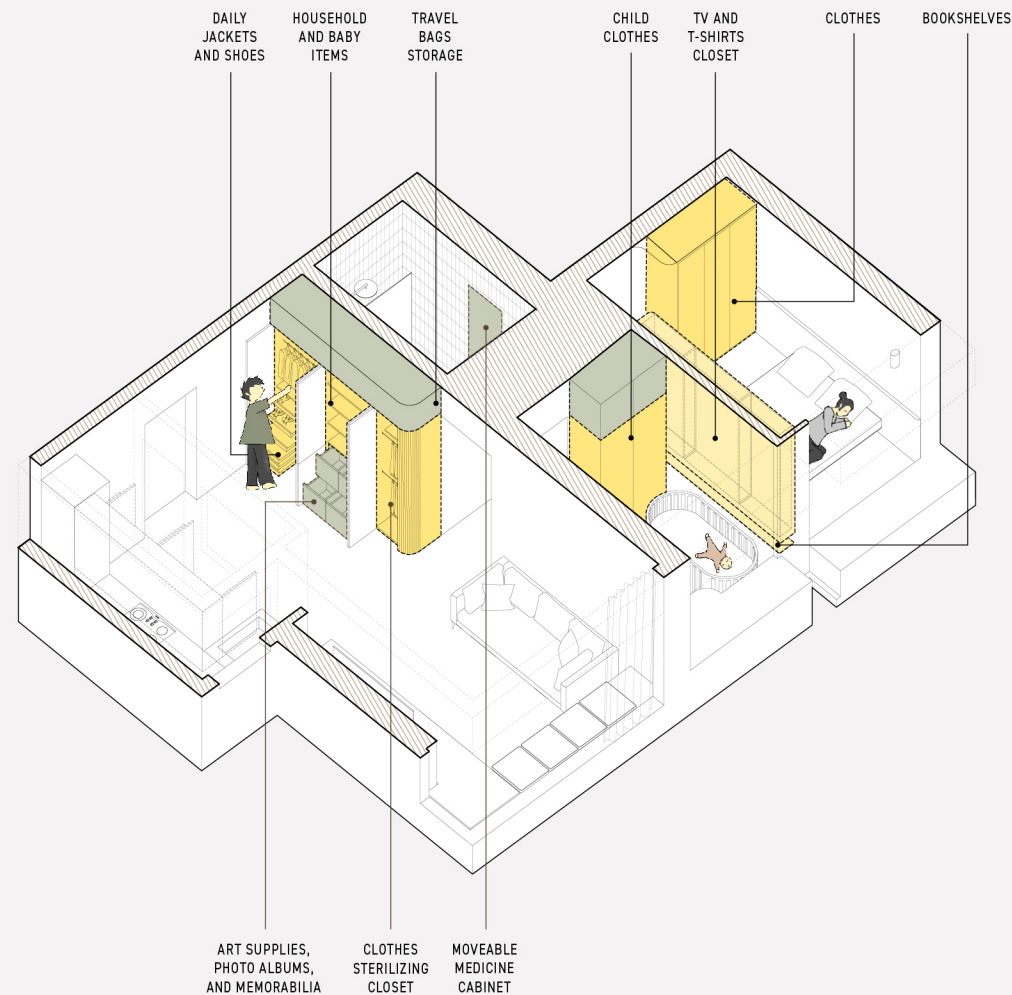


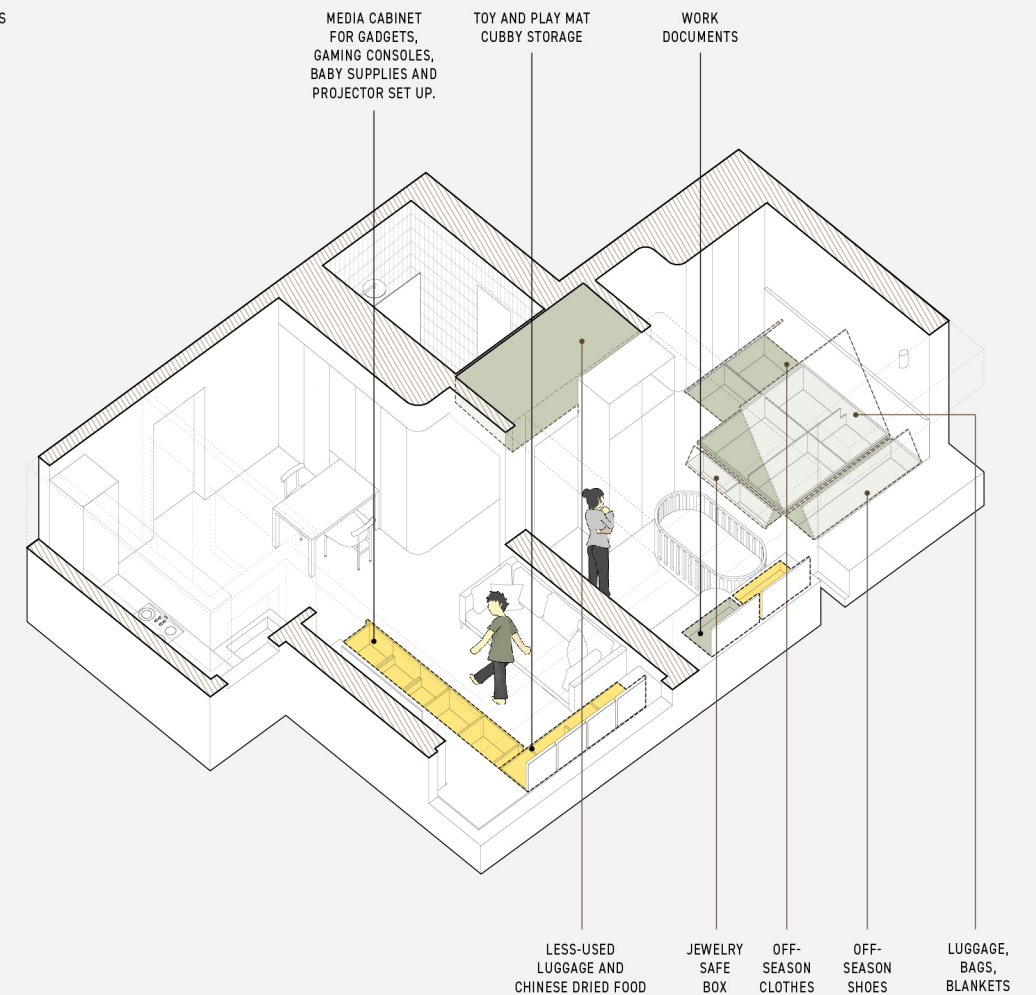
- 1 KITCHEN
- 2 OPENING TO PROVIDE VISUAL CONNECTIVITY FROM THE KITCHEN TO THE LIVING SPACE
- 3 TABLE FOR DINING AND WORK
- 4 BATHROOM TUCKED BEHIND THE UNDULATING WALL
- 5 LIVING AND PLAY SPACE
- 6 TODDLER'S ROOM
- 7 UNDULATING WALL AS STORAGE AND WAYFINDING
- 8 BEDROOM WITH STORAGE UNDERNEATH

UNDULATING WALL AND PROGRAMS



- DAILY NECESSITIES
- LONG-TERM STORAGE

VERTICAL STORAGE ⇅



- DAILY NECESSITIES
- LONG-TERM STORAGE

HORIZONTAL STORAGE ↔