

MEMAR

architecture

ARCHITECTURAL DESIGN OF THE YEAR

ABOUT MEMAR ARCHITECTURE

The Memar Architecture story began in 2008. It's a company that provides design-build services, including architecture and interior design, landscaping, supervision of construction, and project management, with experience in more than 300 achievements worldwide in commercial, governmental, hospitality, and residential projects with different styles and conditions

It's based in Dubai, UAE, at Barsha Heights, but also provides its services worldwide MEMAR Architecture clarifies the client's requirements and lifestyle and translates them to life in such a stable, functional, usable, adapt to changes, environmentally friendly, healthy, and elegant way, in addition to studying the land and its properties and providing a well-studied design that unlocks the full potential of the land aesthetically and practically. Developing innovative building design solutions that push the experience level to the maximum.

All the designs are well-studied to evoke comfort, peace, happiness, and safety, in addition to improving air quality and natural lighting. Also, ensure that residents feel at "home" in their homes.

The MEMAR's passion for architecture and thorough understanding of details, materials, textures, function requirements, and lighting lead us to create the most precise, elegant, and opportune designs.

STRATEGY

Study lands and their properties and provide a creative design that unlocks the full potential of lands aesthetically and practically to exhibit new remarkable projects and positively impact people and, as a result, the entire country and global community.

Develop innovative building design solutions and solve many complex problems related to-building structure as well as aesthetics to spread awareness on the impact of architecture and interior design on productivity, mood, and health.

VISION

"To be the preferred partner in creating exceptional experiences, bringing clients' visions to life through unparalleled service, respect, knowledge, and unwavering honesty."

MISSION

"Seek long-term relationships with the clients, meet their expectations, continue team-building with different backgrounds, and create an extraordinary and innovative atmosphere."

Project Profile

Project Overview

The Mr. Kenger Villa project was designed with the client's vision of creating an exceptional single-family residence that balances luxury and functionality while standing out as an architectural landmark.

The objective was to develop a modern, comfortable living space that enhances the family's lifestyle and provides a visually appealing and distinctive residence.



Scope of the Project:

The villa was carefully designed to cater to the client's lifestyle needs, incorporating various functional and luxurious spaces, such as:

- Multiple bedrooms, a grand entrance, and spacious living and dining areas.
- A state-of-the-art kitchen, private home office, and a luxurious master suite.
- Entertainment areas, including a kid's pool and game area for relaxation and socializing.
- Extensive outdoor spaces featuring an infinity pool, landscaped gardens, and an outdoor dining area ideal for gatherings and formal entertaining.



Materials Used:

To achieve seamless integration of modern aesthetics and functionality, high-end materials were chosen for their durability, luxury, and visual appeal:

- Armani Dark and Light Grey: These shades create a refined and elegant ambience throughout the villa.
- Wood: Strategically used for warmth, sophistication, and a natural look that enhances indoor-outdoor harmony.
- Brass: Adds luxurious metallic accents and complements the villa's modern aesthetic.
- Glass: Large glass facades bring abundant natural light into the interiors, creating an open, airy feel and strengthening the connection to the outdoors.



Project Outcomes

- The project aims to create an elegant and comfortable environment that meets the family's living needs while also providing spaces for leisure and social interaction.
- By combining materials such as Armani grays, wood, brass, and glass, the villa embodies sophistication and warmth, fostering an inviting and cohesive atmosphere that aligns with the client's vision for a luxurious yet comfortable home.



- **Compliance with Building Regulation and Design Guidelines:** Our design adheres to fire safety, structural integrity, and accessibility requirements, ensuring the highest standards of safety and usability.
- **Sustainable Construction Practices:** The use of sustainable materials and innovative construction methods aligns with Dubai Municipality's Green Building Regulations, promoting energy efficiency and environmental responsibility.
- **Setbacks and Plot Coverage:** The villa design meets local planning authorities' specifications for setbacks and plot coverage, ensuring appropriate spatial relationships with neighboring properties.



- **Height and Massing:** The building's height and massing comply with zoning laws, preserving the area's aesthetic coherence and preventing overcrowding.
- **Fire Safety Compliance:** The villa design incorporates state-of-the-art fire detection and suppression systems, and uses fire-resistant materials, in line with Dubai Civil Defense guidelines.
- **Accessibility Compliance:** The project provides facilities that cater to all residents and visitors, including those with disabilities, fulfilling requirements for inclusive design.



- Partners and Suppliers List key partners and suppliers involved in the project, highlighting their roles and contributions.

ME Living Company - Our sister construction company, responsible for bringing the villa's architectural vision to life with structural expertise.

Millworx Company - Our sister carpentry company, provides custom woodwork and millworx to enhance the villa's interior aesthetic.

Together, these sister companies complement our services, ensuring a cohesive and high-quality project delivery.



Floorplans of the Property

The building's floor plans reveal several key features designed to enhance both functionality and aesthetics, tailored specifically for this residential project.

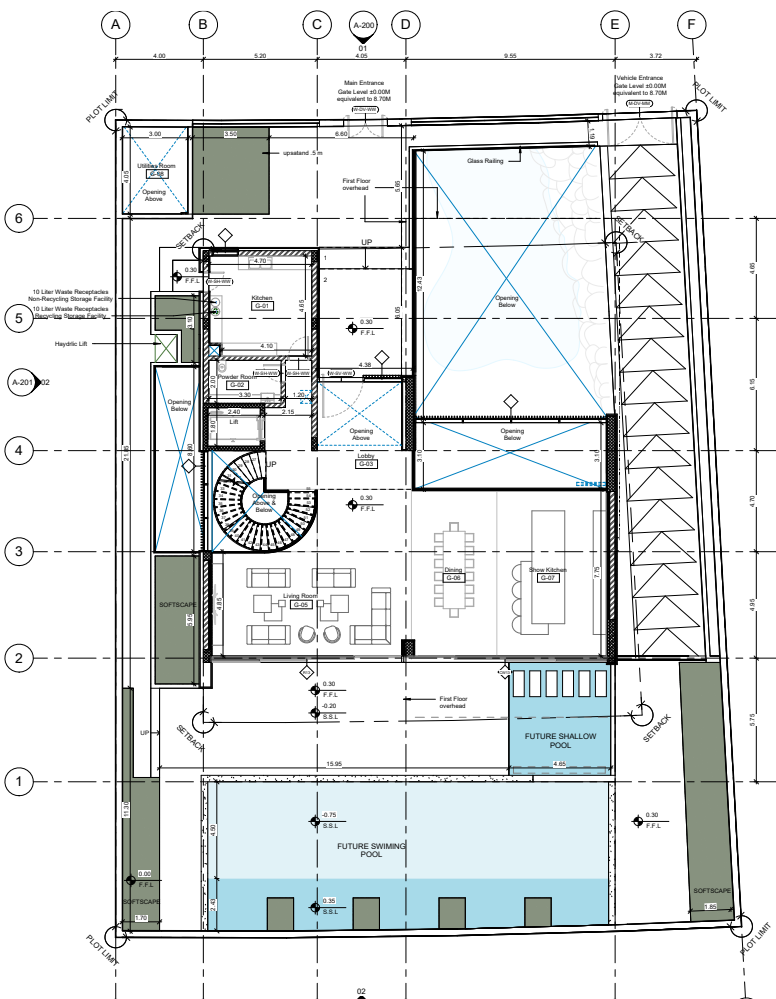
The layout strategically separates different zones to maximize privacy and convenience. For instance, there is a clear distinction between the guest suite and the primary living areas, ensuring that guests have their own space while still being close to the amenities such as the living room and the proposed future swimming pool.

The design also includes a well-thought-out parking area on the ground floor, providing easy access and secure parking for residents.

The presence of office space offers a quiet environment for work within the home, while essential utility rooms like the water tank and maid's room are tucked away to maintain the aesthetic and functional integrity of the residential spaces.



GROUND FLOOR



Externally, the proposed swimming pool is placed to enhance the recreational experience while maintaining a seamless connection with the interior living spaces.

Additionally, the landscaped areas contribute not only to the visual appeal but also to the environmental sustainability of the building by improving the microclimate around the structure.

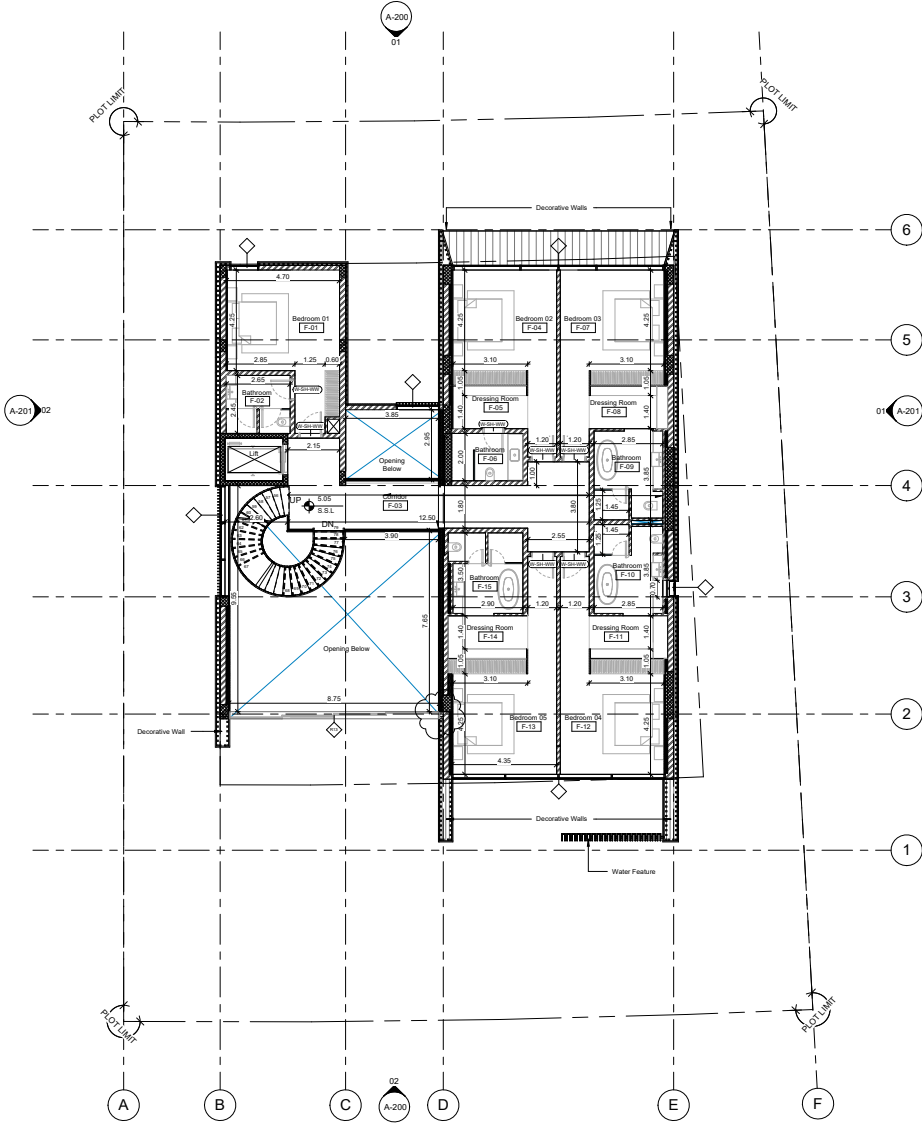
The room layouts in this project are thoughtfully designed to optimize space, functionality, and comfort for residents.

Each type of room is tailored to different needs, ensuring that every square meter is effectively utilized.

The layout ensures that living areas are open and connected, creating a flow that enhances the living experience.

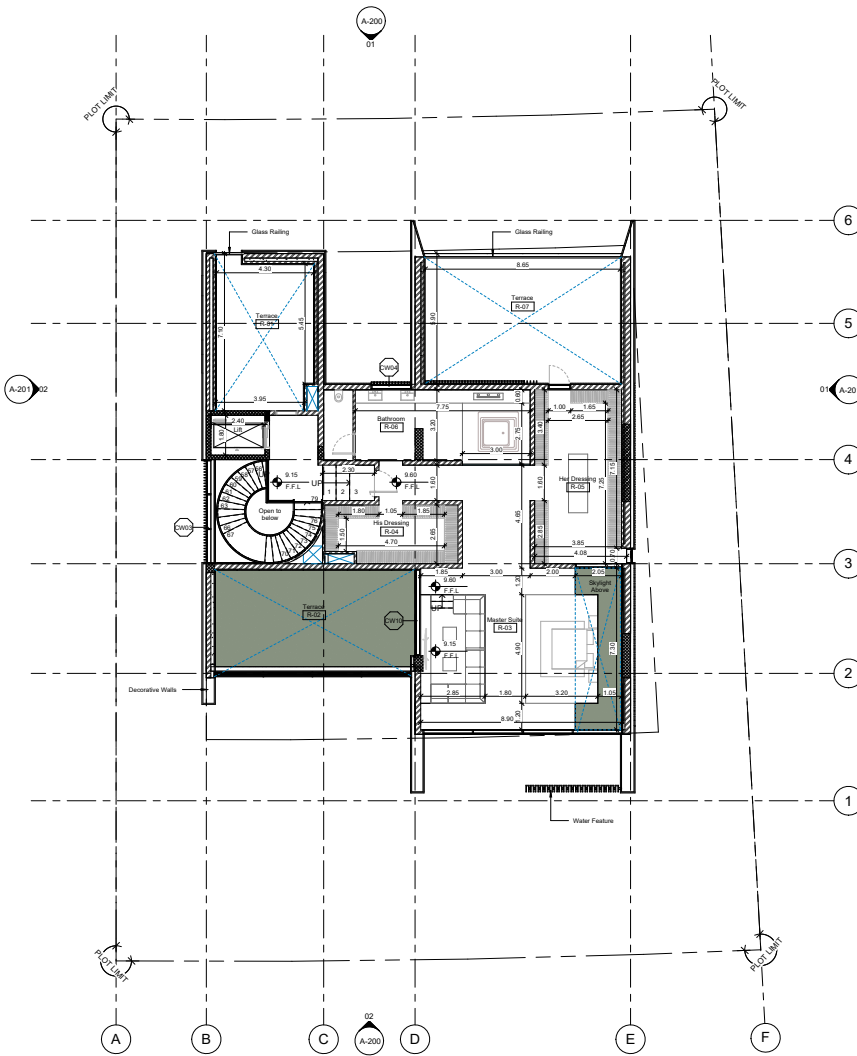
The living spaces are designed to offer a view of the swimming pool, bringing a sense of openness and tranquility.

Bedrooms are strategically placed to ensure privacy, with ample natural light and ventilation.



FIRST FLOOR

ROOF FLOOR



The design also incorporates built-in storage solutions, keeping the spaces organized and clutter-free.

Bathrooms are conveniently located near the bedrooms, ensuring ease of access without disrupting the overall flow of the apartment.

The kitchens are designed for functionality, with easy access to the dining areas.

The layouts consist of simplified drawings that capture the essence of the villa's architectural design, including both elevations and floor plans.

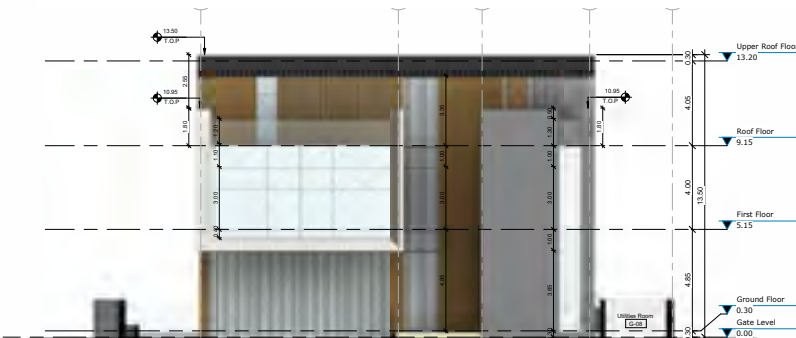
These sketches are designed to clearly illustrate the key architectural elements that define the project's innovative approach.



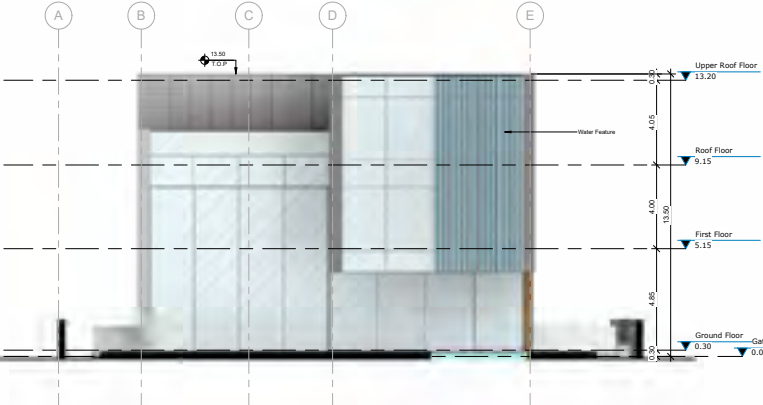
01 Front Elevation
1:100



02 Back Elevation
1:100



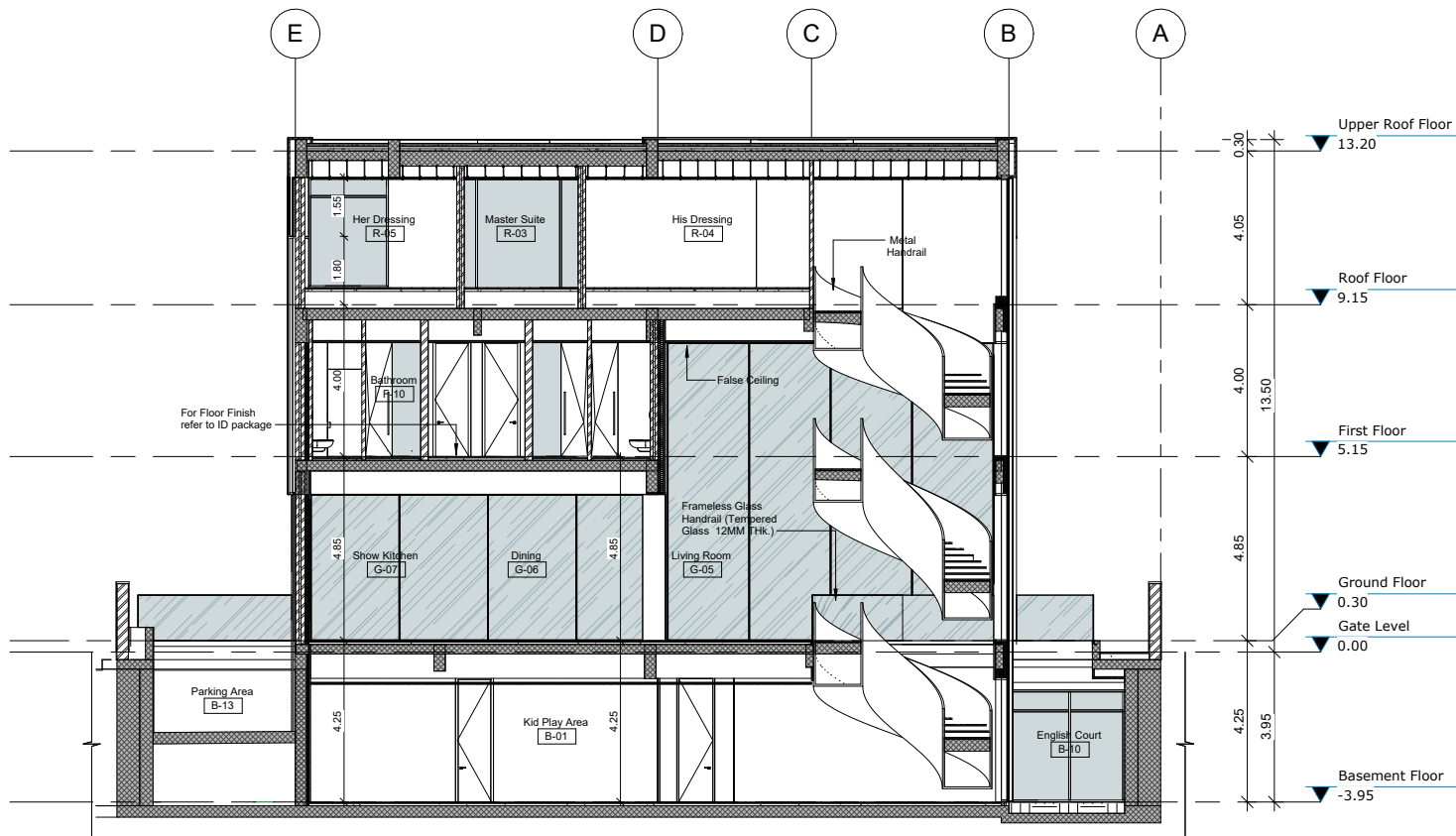
01 Front Elevation
1:100



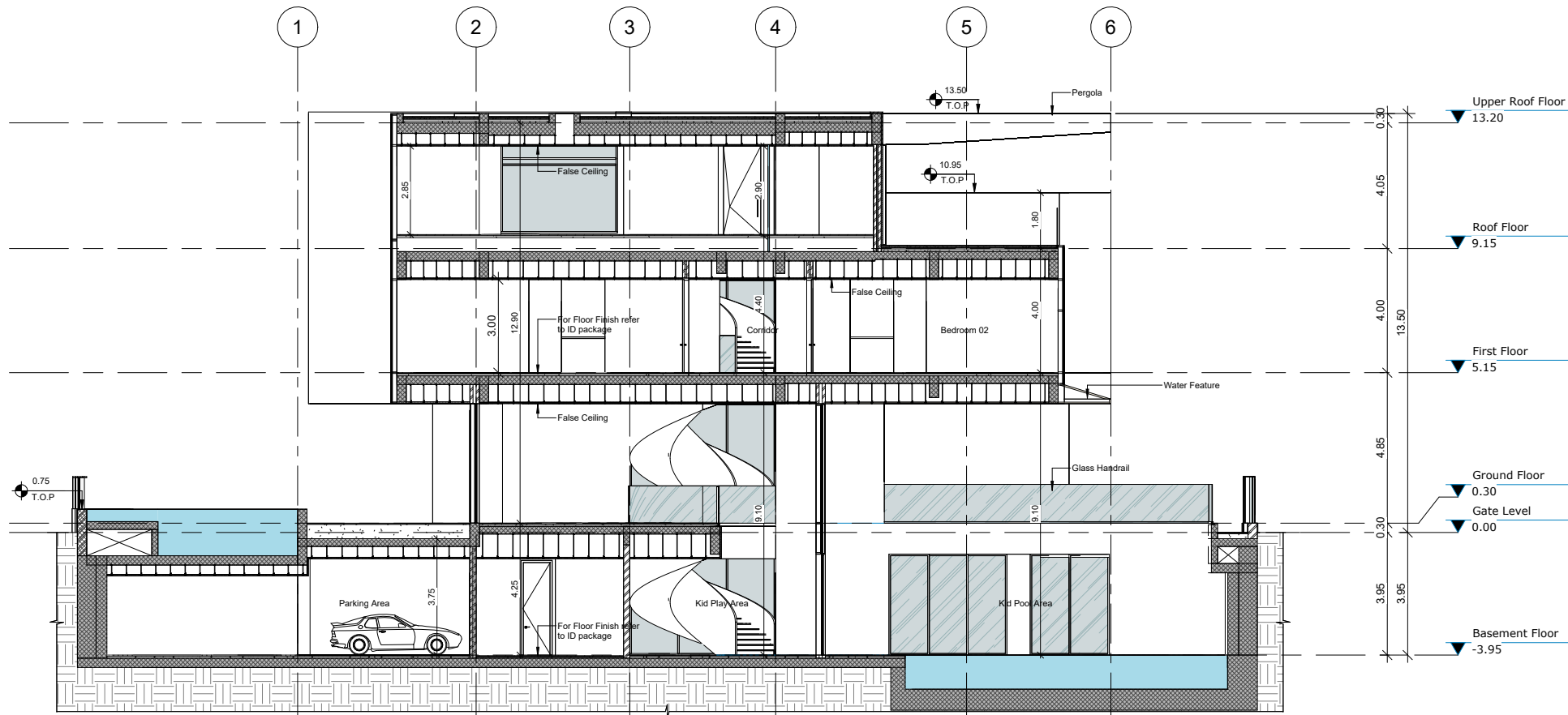
02 Back Elevation
1:100

The layouts consist of simplified drawings that capture the essence of the villa's architectural design, including both elevations and floor plans.

These sketches are designed to clearly illustrate the key architectural elements that define the project's innovative approach.



01 Section 01
1 : 100



02 Section 02
1 : 100

PROJECT SPECIFICATIONS AND ADVANTAGES DISCUSS THE PROJECT'S INNOVATIVE ASPECTS, CREATIVE SOLUTIONS, AND TECHNOLOGICAL ADVANCEMENTS. EXPLAIN HOW THE PROJECT ADHERES TO SUSTAINABILITY STANDARDS (SOCIAL, ECONOMIC, AND ENVIRONMENTAL RESPONSIBILITY).

Project Specifications and Advantages

- **Innovative Aspects and Creative Solutions:** The Mr. Kenger Villa exemplifies innovation through its materials and architectural elements, designed to balance luxury with energy efficiency.
- **Sophisticated Material Selection:** The villa's finishes, including Armani Dark and Light Gray, are paired with extensive wood and brass details. These materials provide both visual appeal and durability, while large glass facades maintain a sense of openness and connectivity with nature.
- **Dynamic Design Features:** The louver canopy allows natural light into interior spaces while providing shade, creating a balance between comfort and aesthetic value. Strategic positioning of large glass facades maximizes daylight and minimizes artificial lighting needs, promoting an indoor-outdoor connection.
- **Technological Advancements:** The villa incorporates energy-efficient lighting systems, smart spatial planning, and an advanced HVAC system, enhancing both functionality and environmental responsibility. High-performance insulation and energy-efficient windows reduce heating and cooling demands, ensuring a comfortable, low-impact living environment.





PROJECT SPECIFICATIONS AND ADVANTAGES DISCUSS THE PROJECT’S INNOVATIVE ASPECTS, CREATIVE SOLUTIONS, AND TECHNOLOGICAL ADVANCEMENTS. EXPLAIN HOW THE PROJECT ADHERES TO SUSTAINABILITY STANDARDS (SOCIAL, ECONOMIC, AND ENVIRONMENTAL RESPONSIBILITY).

Sustainability Standards (Social, Economic, and Environmental Responsibility):

- Materials, Design, and Construction Elements that Reduce Energy Consumption: Energy-Efficient Lighting: Advanced systems reduce electricity usage while providing adequate illumination.
- High-Performance Insulation: Effective insulation materials stabilize indoor temperatures.
- Energy-Efficient Windows: Low-E glazing helps regulate indoor climates, lowering reliance on mechanical heating and cooling.
- Water-Saving Fixtures: Low-flow fixtures and dual-flush toilets support responsible water use.
- Low-VOC Paints: Eco-friendly paints with reduced volatile organic compounds improve indoor air quality.
- Sustainable Building Components: Responsibly sourced wood and recycled materials reduce the villa’s ecological footprint.
- Environmentally Friendly Materials and Techniques: Low-VOC Paints for healthier indoor environments.Sustainable Wood to support forest conservation

Eco-friendly components, including recycled materials, reduce environmental impact.

- Renewable Energy and Energy-Saving Methods:
Solar Panels to harness renewable solar energy, where applicable. Passive Solar Heating through strategic design to decrease artificial heating needs.
Energy-efficient HVAC Systems, possibly incorporating geothermal sources, reduce energy demands

SAFETY AND SECURITY

Enhanced Security Features:

- 24/7 Surveillance System: The villa is equipped with a state-of-the-art 24/7 surveillance system, including high-definition cameras strategically placed around the property. This system ensures continuous monitoring and records activities, providing an extra layer of security for the occupants.
- Access Control System: Advanced access control measures, such as biometric authentication and keyless entry systems, have been implemented to restrict unauthorized access to the villa. These systems offer enhanced security beyond standard lock-and-key methods.
- Perimeter Security: The villa’s perimeter is secured with robust fencing and automated gates that include intrusion detection sensors. These sensors alert the security system of any unauthorized breaches, ensuring prompt response to potential threats.
- Alarm System: A sophisticated alarm system is integrated into the property, connected to emergency services and security personnel. This system provides immediate alerts in the event of unauthorized entry, fire, or other emergencies.

Fire Prevention and Suppression Systems:

- Fire-Resistant Materials: The villa is constructed using fire-resistant materials, particularly in critical areas like the kitchen, electrical rooms, and storage spaces. These materials minimize the spread of fire, providing valuable time for evacuation and response.
- Automatic Fire Suppression System: The property is equipped with an advanced automatic fire suppression system, including sprinklers strategically installed throughout the villa. This system activates in the presence of smoke or excessive heat, effectively controlling and extinguishing fires before they can cause significant damage.
- Smoke Detectors and Alarms: Smoke detectors are installed in every room and common area of the villa. These detectors are connected to a central alarm system that alerts occupants and emergency services immediately in case of fire, ensuring quick action to safeguard lives and property.



WEBSITE www.memararch.com
E-MAIL info@memararch.com
TEL (+971) 4 87 48 031
LOCATION Barsha Height, Dubai, UAE