

Junction Semi

2024

Studio | 





Junction Semi

Located in Toronto's west end, this project transformed a church into a multi-generational home for a growing family and their parents. The church, spanning the entire site depth, offered a unique opportunity to carve out space, allowing light to penetrate deep into the interior. Over its history, the church served various denominations but always remained a gathering space at its essence.

Set slightly below street level to ensure privacy and a retreat-like ambiance, the existing structure provided a robust foundation for the redesign. The home is divided into two equal units, split north-south, with shared outdoor spaces fostering connection among the extended family. These communal areas include the entry, garage, courtyard, bedroom terraces, and rooftop urban farm.

The central courtyard became the organizational heart of the project. By strategically removing portions of the original structure, light was drawn into the building's core, utilizing the existing steel frame and exposed wood beams to reduce waste and celebrate the church's history. The ground floor's monolithic layout was punctuated with precise openings to create distinct spaces while emphasizing natural light.

The second floor followed an additive approach, balancing privacy and shared experiences. Thoughtfully placed volumes created private bedrooms while opening into terraces and communal spaces, such as the rooftop farm. A double-height atrium near the entry, illuminated by a skylight and a large window, connects both levels and fills the interior with light. Adjacent to the atrium, a Japanese maple grows in a courtyard, acting as a natural privacy screen between the street and the primary bathroom.

The design emphasizes light and connectivity, reflected in a material palette that highlights texture over color. Limewash paint, microcement, exposed wood beams, and original brickwork create a neutral canvas that enhances the interplay of light and shadow, celebrating the building's layered history.

StudioAC Team: Jonathan Miura, Jennifer Kudlats, Andrew Hill, Mo Soroor

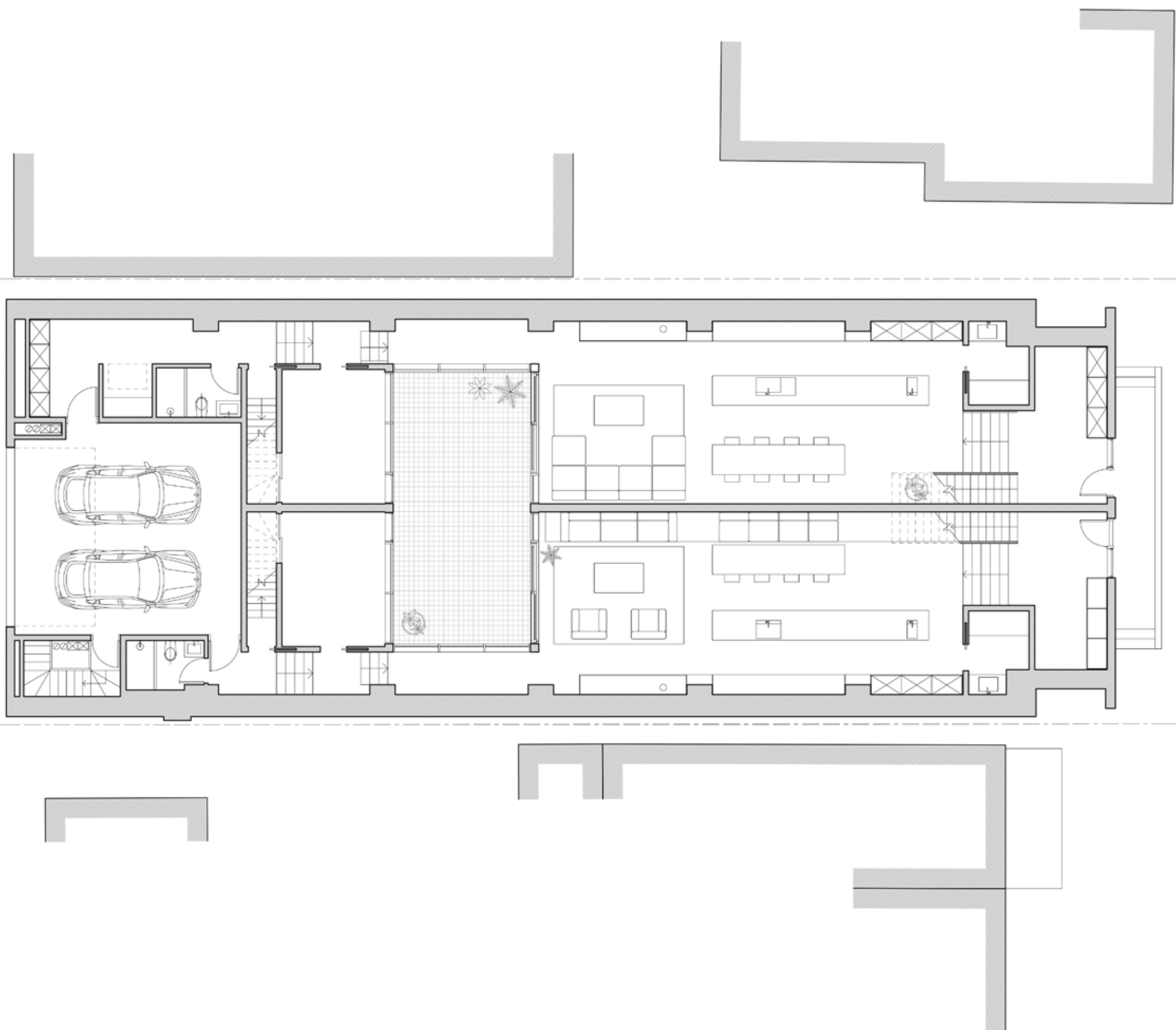
Build: Stein + Regency

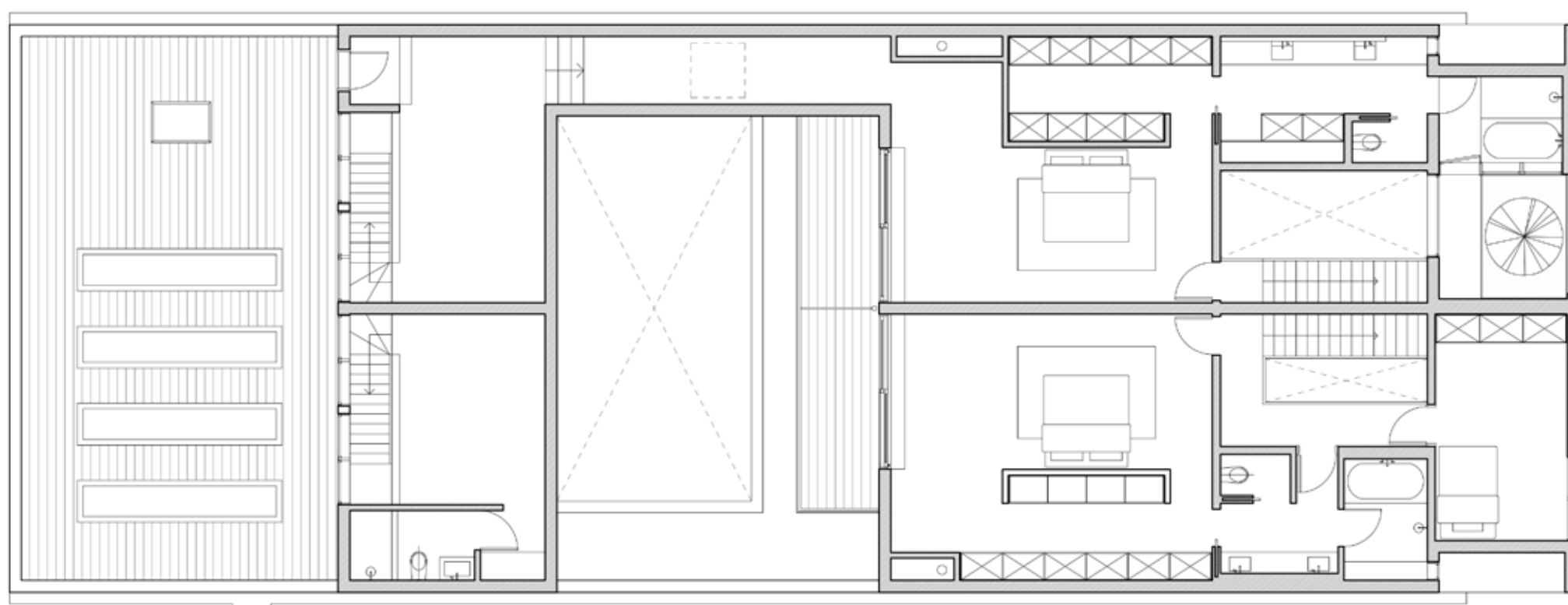
Images: Felix Michaud





720





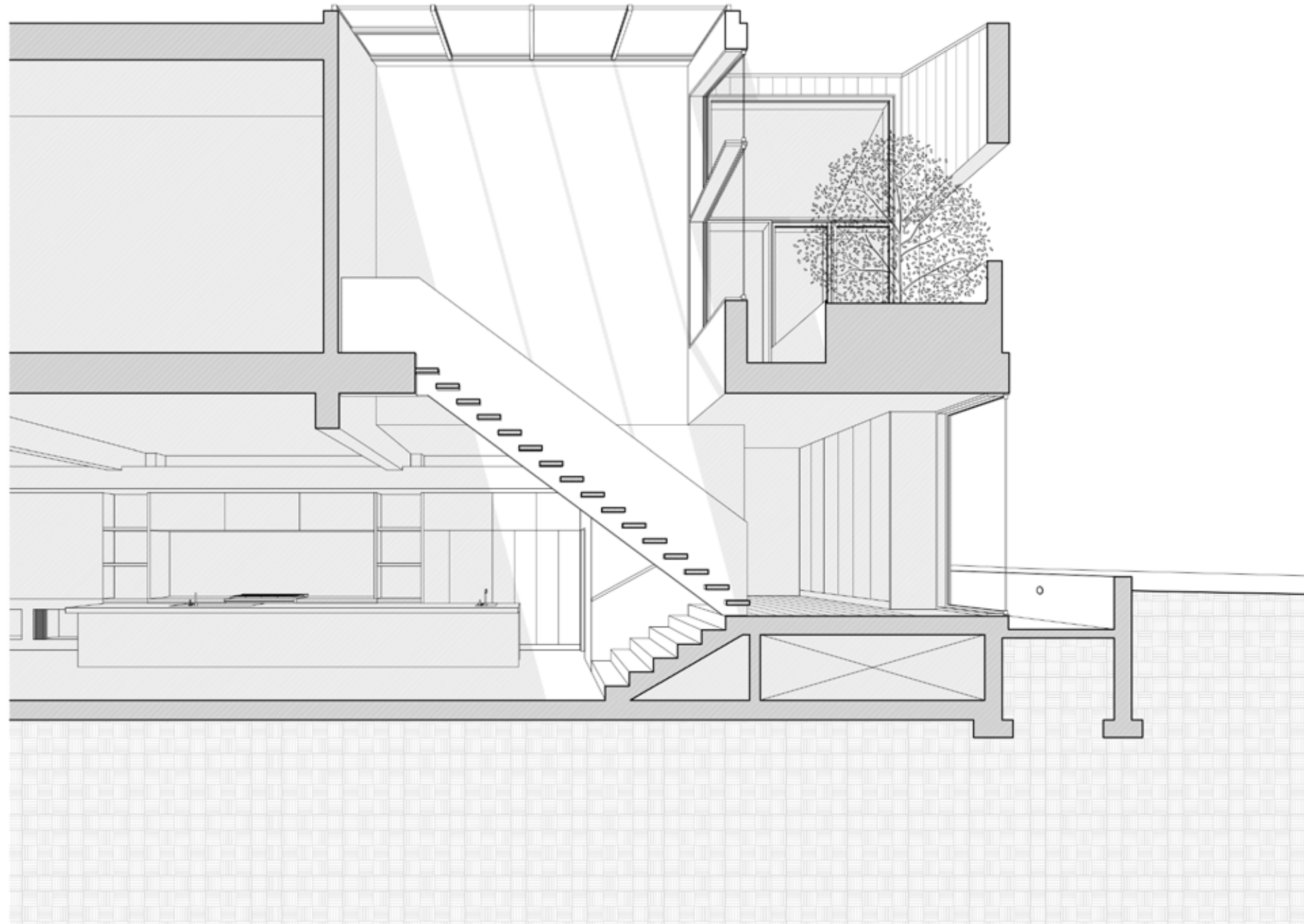














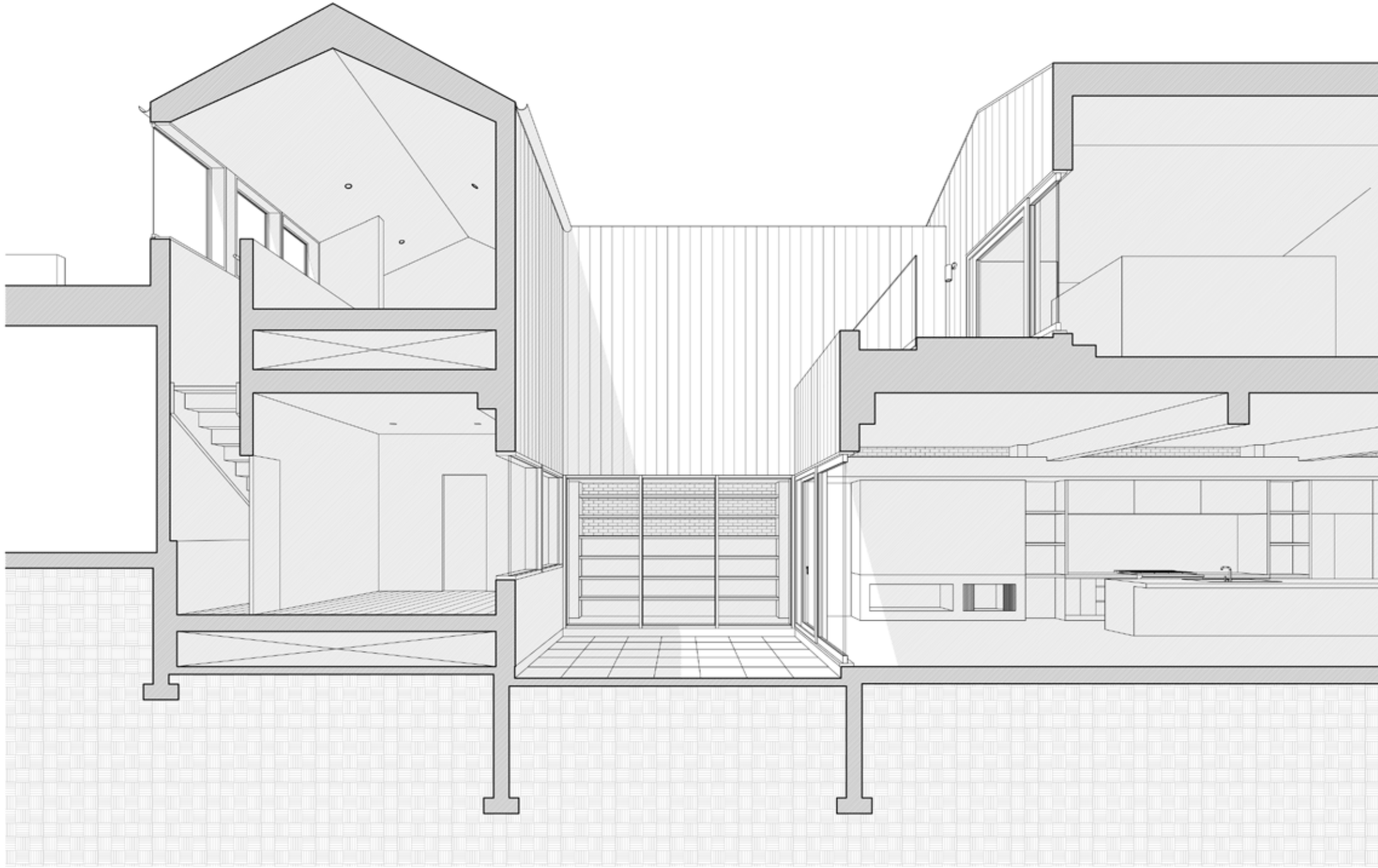


































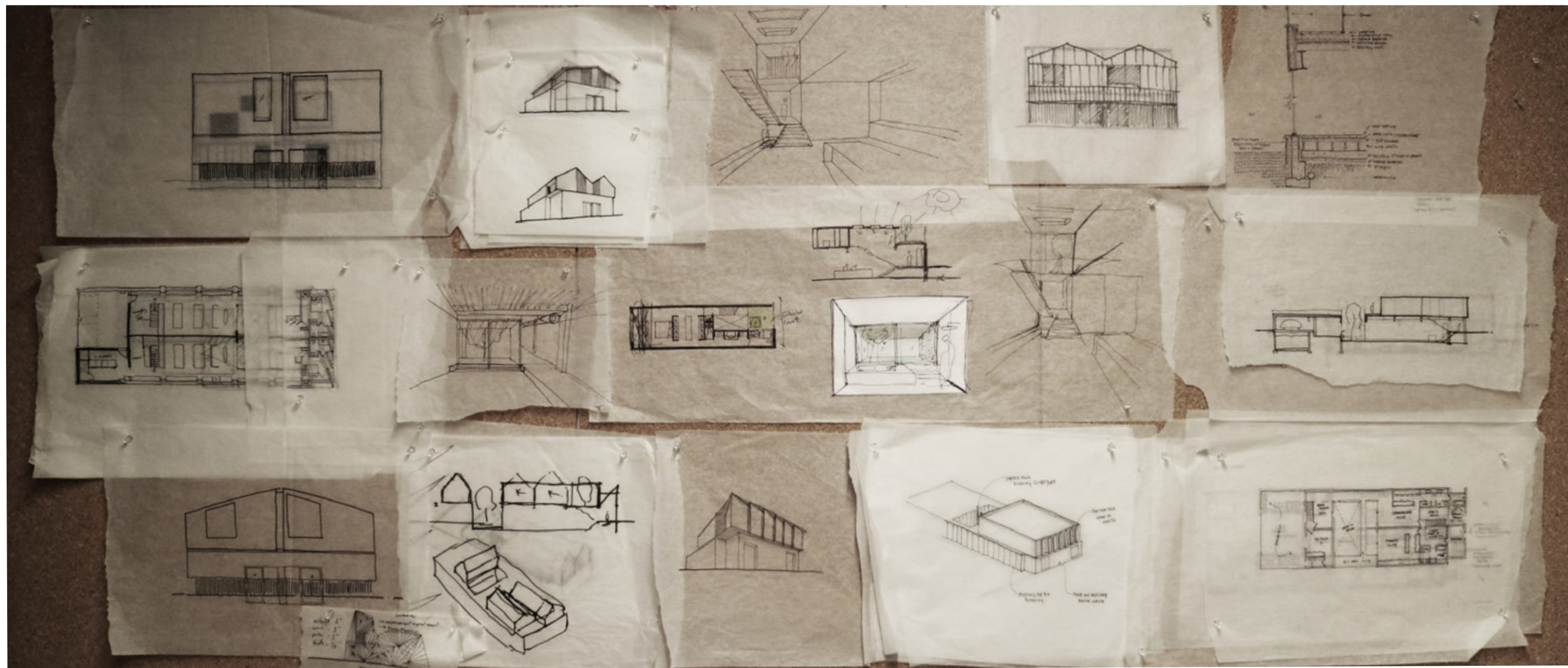


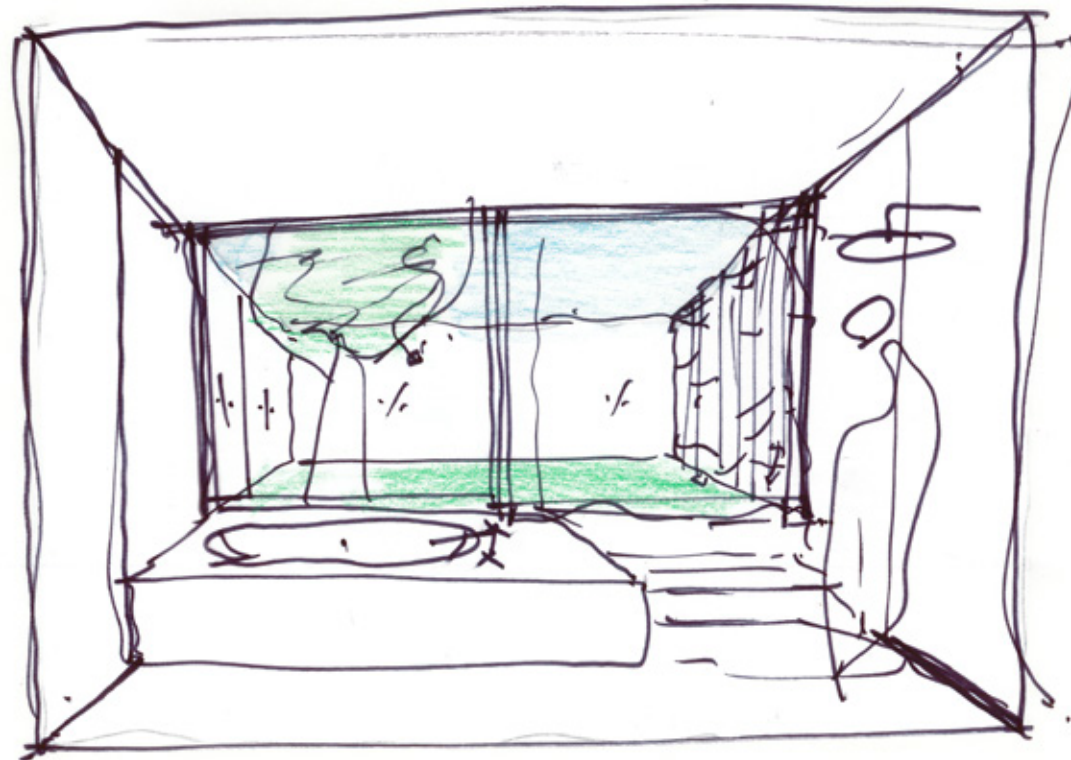
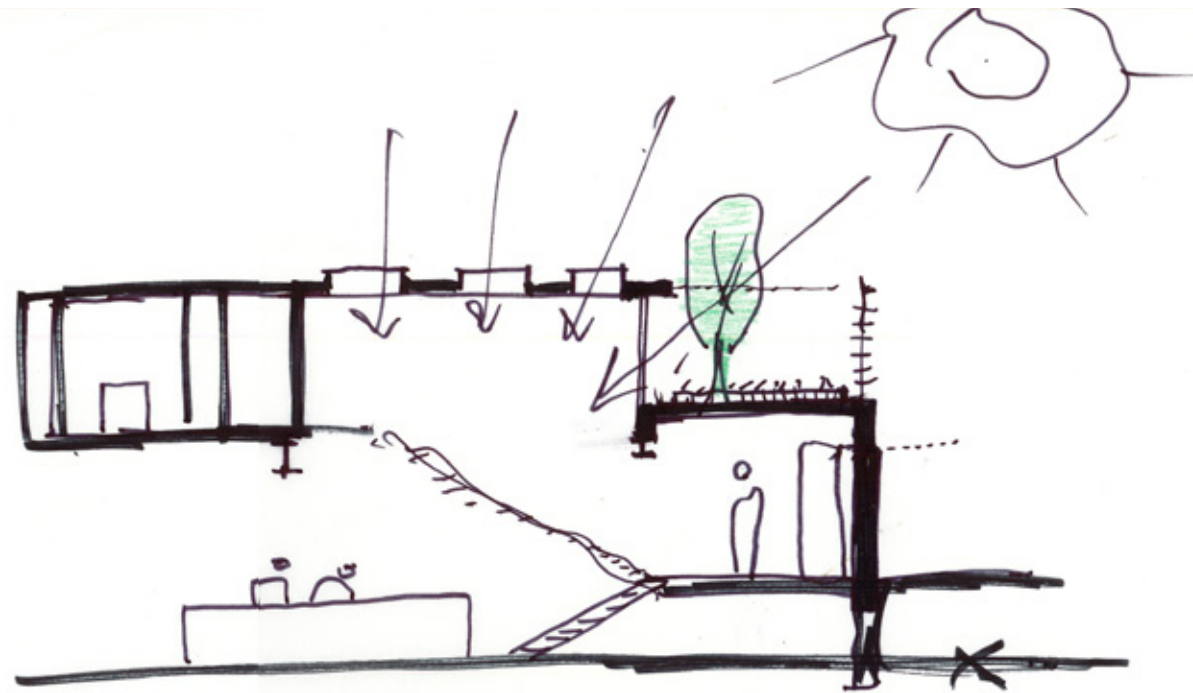












Studio |

studio@archcollab.com
www.archcollab.com
647.341.0066

StudioAC Team

Andrew Hill
Jennifer Kudlats
Jonathan Miura
Mo Soroor

Build by:

Stein + Regency

photos by:
Felix Michaud

