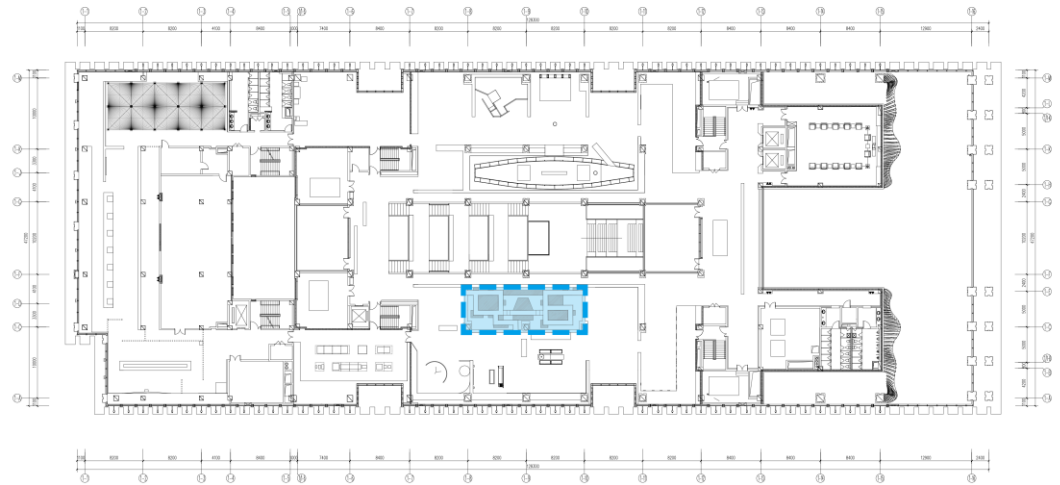


Project Overview



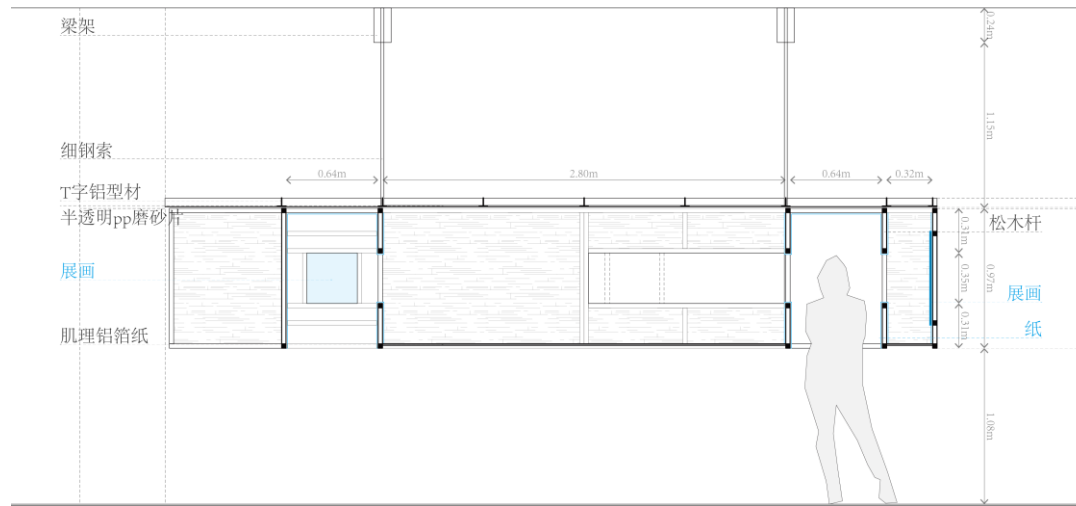
The project, “Garden for the eyes”, consists of a spatial installation by Mr. Dong Yi and paintings by American artist Ms. Lyu Wujiu (1918-2013). For an architect who has been immersed in the culture of Jiangnan, when it comes to Jiangnan, garden is almost the most appropriate expression. We created a garden in way of spatial installation, shaping the purity of the space with simple materials, so that the visitors can obtain the essential interest of the garden space.

Zuibaichi



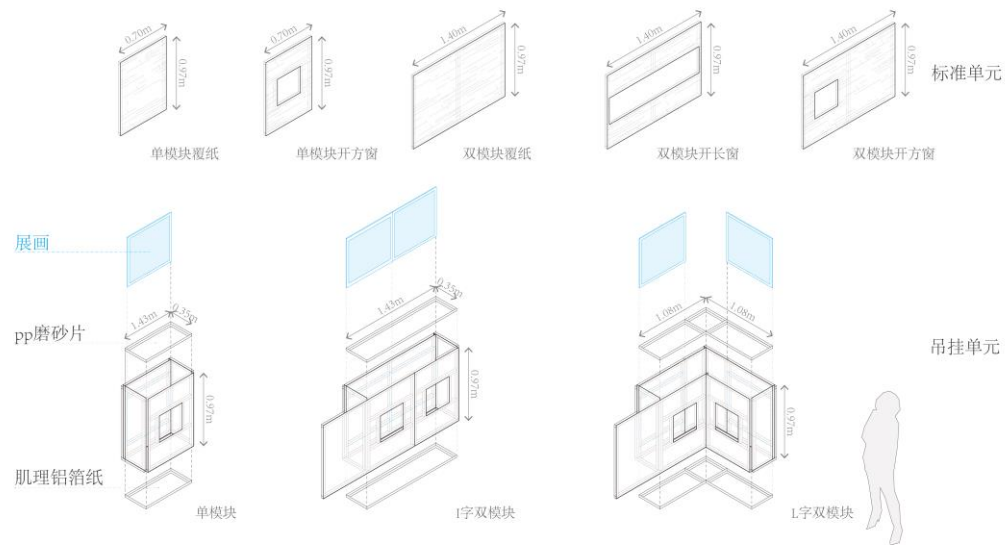
Through the condensation of space, the Garden for the eyes focused its experience on the senses themselves, taking the meaning of “Wandering around and enjoy yourself”. The spatial design was derived from the localized spatial structure of Zuibaichi, taking courtyard, bridge, well and corridor as the basic spatial elements, and reinterpreting from the perspectives of scene, space and sequence.

Concept



Through the contraction of the scale of the garden, the work transforms the space of human behavior in the natural environment to adapt to the smallest scale of the human body, and after the abstract reorganization, the garden hangs at the height of upper half of the body, allowing only one person to walk in one direction.

Installation



The whole installation is modularized at the scale of 640, and most of the components can be prefabricated off-site and assembled on-site, which improves the efficiency of the erection and reduces the disturbance of the construction to the site (library).

Eye-wandering is the process...



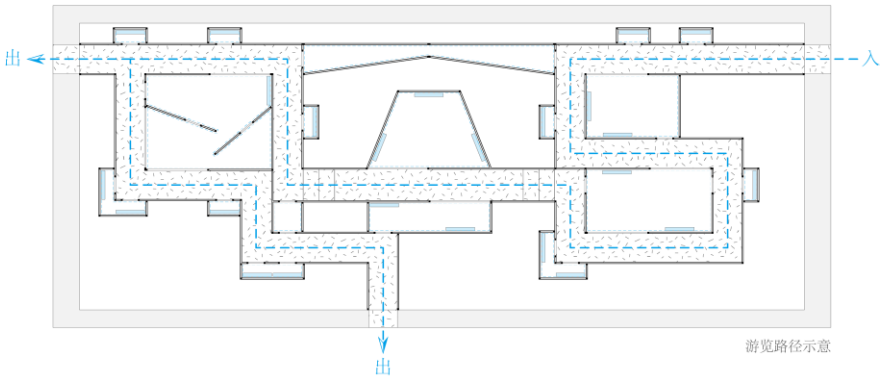
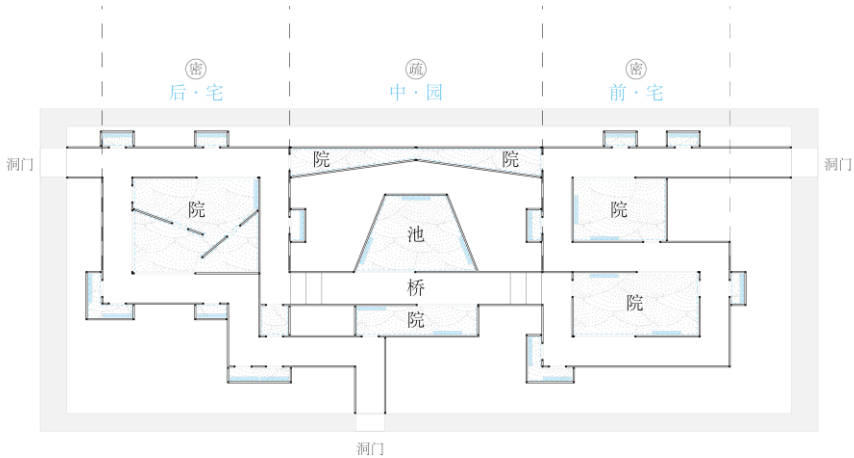
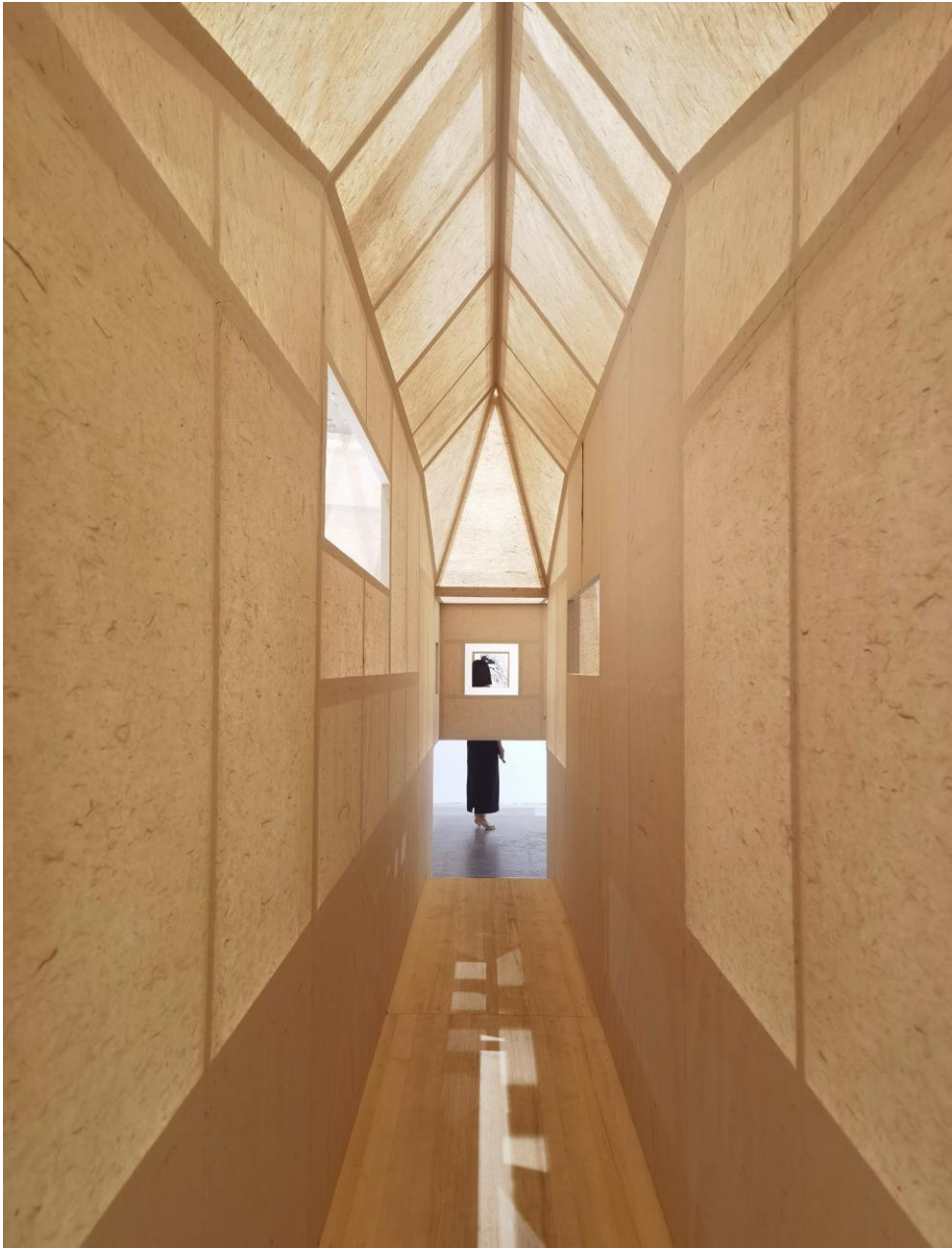
For this work, eye-wandering is the process: from an inadvertent glance to looking around, from a distant look to occupying the whole field of vision, the courtyard can be fully viewed from side to side, the bridge can be looked up and down, the hidden well can be found through a casual glance, the depth of the corridor can be measured through a distant watch.

Mind opening wide is the result.



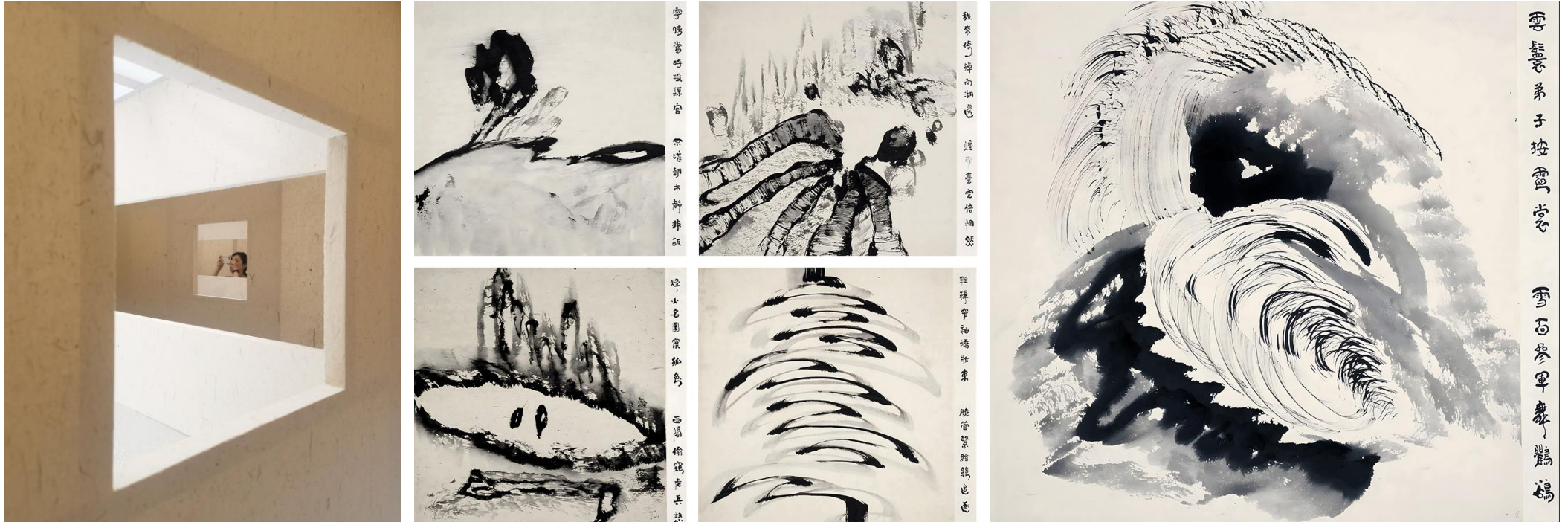
Mind open wide is the result: the body yet to move, the heart been far away, great changes being experienced in a twinkling of an eye, interest of exploring the garden being experienced between square inches, joy of wandering being experienced between brightness and darkness.

Layout



游览路径示意

Paintings



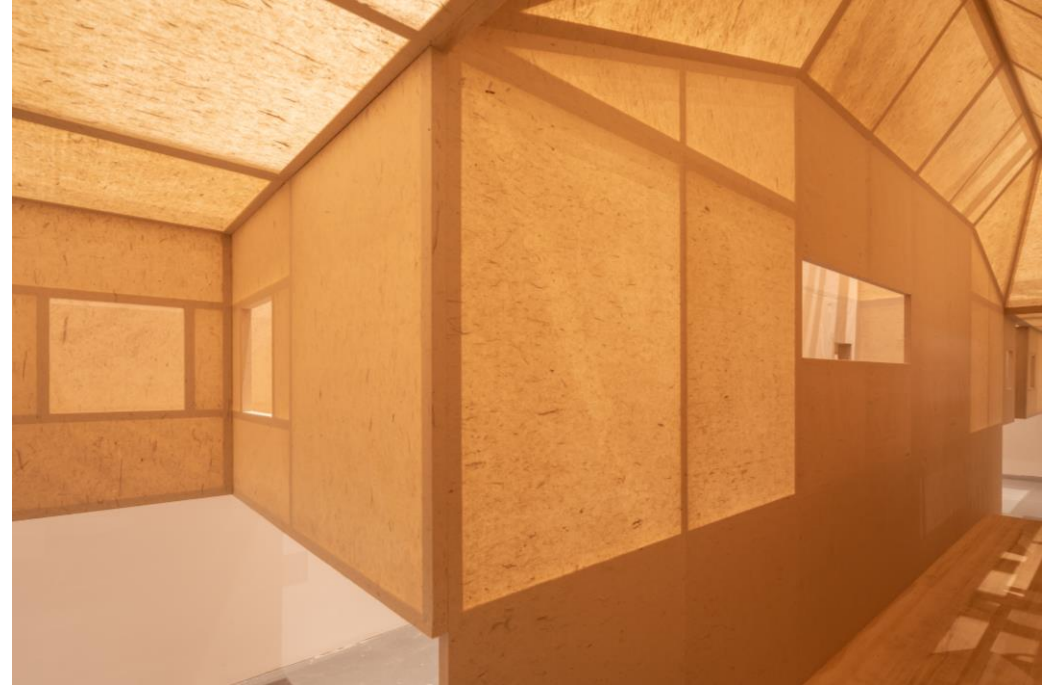
The paintings on display are a set of reproductions of abstract ink paintings on the theme of Wu Meicun's poem "Yuanhu Qu", with a total of 27 paintings. The author painted with poetry, and recorded her inner feelings with intuition. The brush and ink share her feelings, depicting the vicissitudes of the scenery in Jiangnan, and also expressing the nostalgia of Jiangnan that is deeply hidden in her heart.

Garden vs Design



Every turning in the course of eye-wandering is a reconstruction of the space-time scene. The relationship between the paintings and the space is constantly reorganized to integrate the narrative of the space and the interpretation of the paintings. Between the spatial ups and downs of the garden, lingered the faint nostalgia spanning over sixty years, and the joint exhibition demonstrated some kind of abstract memories of Jiangnan together.

Material



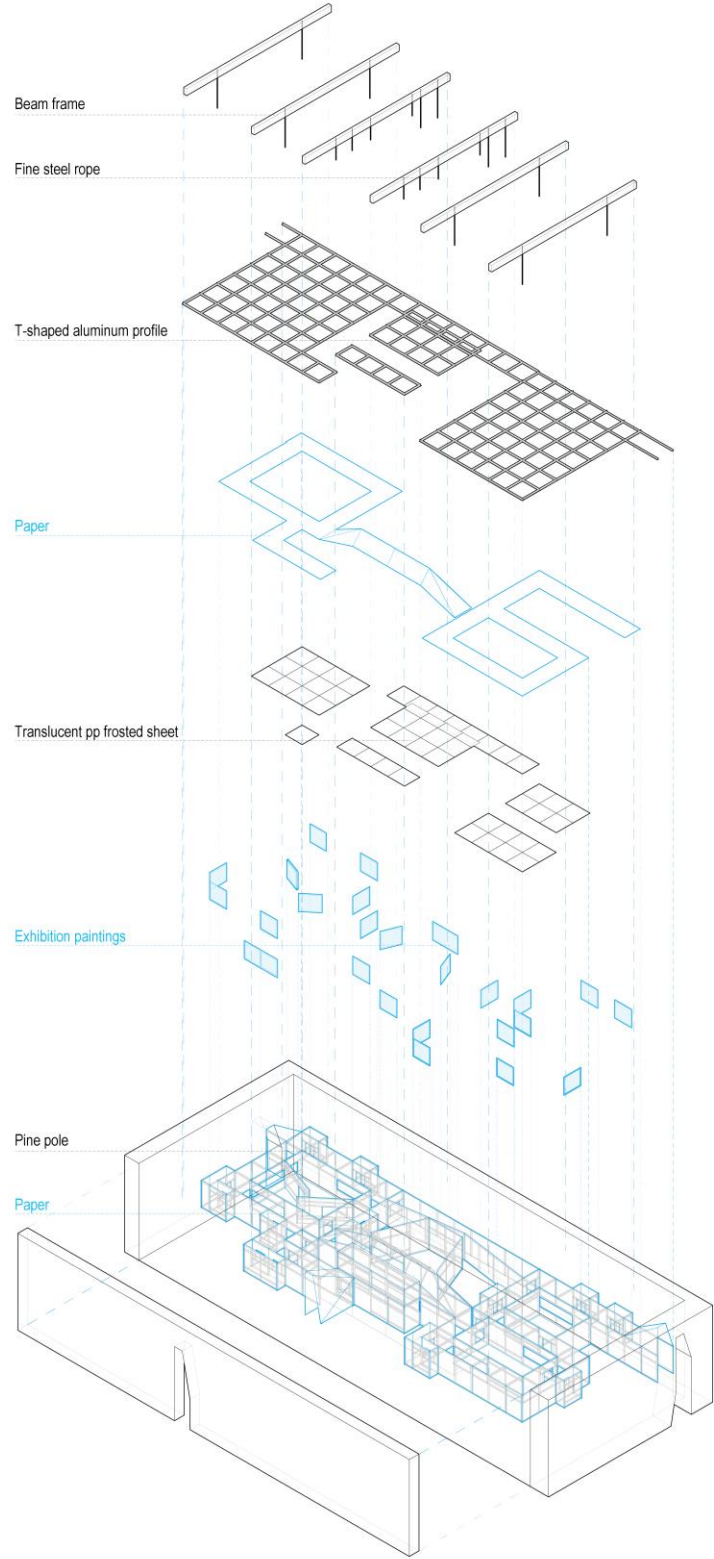
We chose handmade leatherette paper produced in Jing County, Anhui Province as the material for the spatial interface. This kind of paper has very clear fibers, thick and soft, transmits light appropriately, and gives people a warm feeling. The paper is lightweight, easy to hang, and can be replaced and maintained according to the needs of the exhibition.

Installation Process



The pine frames are fixed to the “T” aluminum profiles according to the zoning, and hung from the upper beams with thin steel cables. The “sky” of the “pond” and the “courtyard” is made of translucent pp frosted sheet, with lamps above to simulate the sky light; the “Ground” is made of folded tin foil to abstractly represent the water of the pond. Pine bark is spread on the ground, outlining the path of the garden, and at the same time, raising a few wild imaginations of visitors for this indoor garden which is made of paper.

Installation Process



STRUCTURE

SKY

PAINTINGS

CORRIDOR

GARDEN

