

NS STUDIO

HOUSE IN TVALADI

Architecture Single Residence

Table of Contents

About NS STUDIO	4
A. Design brief and site considerations	6
Project brief, design criteria, project goals, challenges.	
B. Location	14
location and position of the building, finished concept in relation to its surroundings	
C. Architecture and use of space	24
floorplans, key areas, room layouts, furniture samples.	
D. Appearance and finish	50
Used materials, final appearance of the design,	
E. Sustainability, Energy Conservation and Innovation	54
F. Safety and security	55



PRIVATE HOUSE IN TVALADI

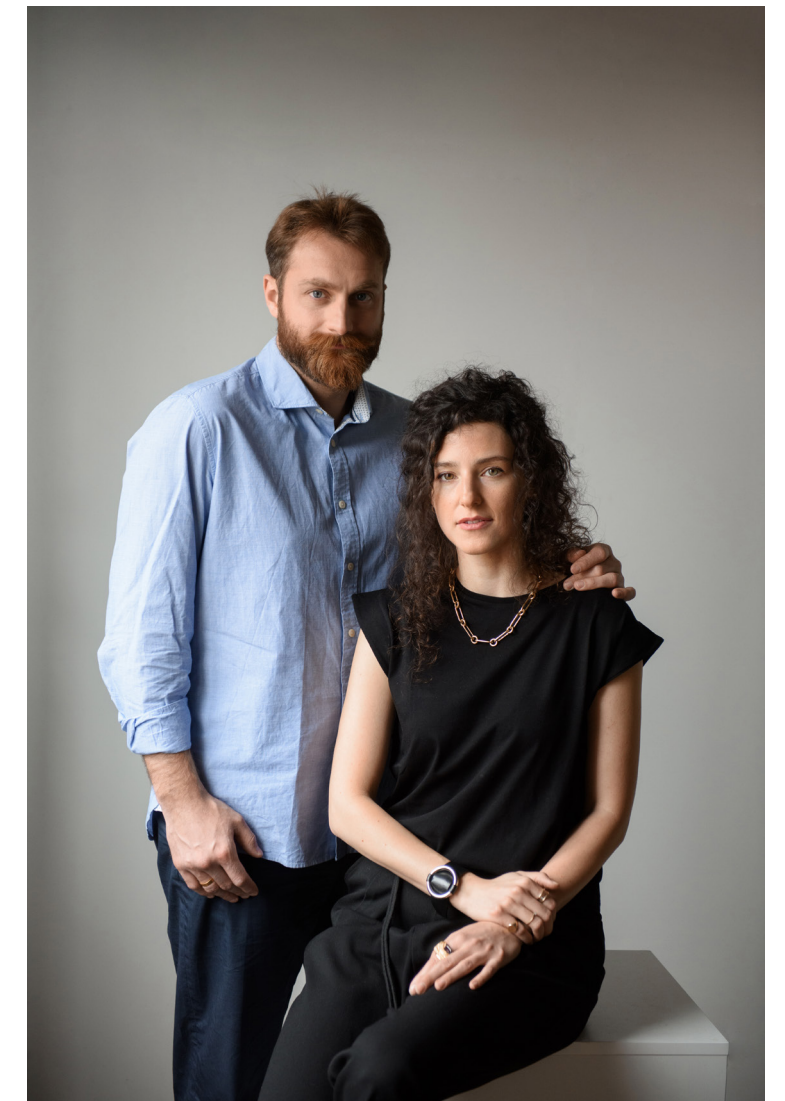
About NS STUDIO

Ten years ago, a visionary team of two embarked on a journey of boundless creativity and passion, with the goal to reshape the architectural landscape of Georgia. Today NS STUDIO unites 40 talented individuals in Tbilisi and Kutaisi, marking it the only architecture studio with two offices in Georgia.

NS STUDIO combines structure, innovation, and expert craftsmanship, ensuring that each project reflects uncompromising quality. Our commitment to excellence has lead us to introducing NS Product - product design platform of a true manifestation of our holistic approach.

Having traveled a decade-long journey, NS STUDIO has never ceased to learn, evolve, and stay true to primal vision: to achieve more than envisioned, and to constantly push the boundaries of creativity.

NS STUDIO Architecture & Design was founded in 2013 by Luka Chaganava and Nino Tchanturia. Our goal is simple yet profound: to create high-grade, captivating and original works in architecture and design. We believe in the power of personal expression, infusing each project with the right blend of context, content, functionality and individualism. This approach sets us apart, leaving a lasting impression behind. With a diverse team of skilled professionals, we turn ideas into reality, embracing the essence of collaboration.



PRIVATE HOUSE IN TVALADI

A. Design brief and site considerations

Private house in Tvaladi represents a synthesis of balance and harmony, that is expressed by the combination of modern forms and authentic materials.

One-storey volume is built of stone and wood constructions, which are to some extent a large part of the interior. Large format apertures on the façade allows to turn the surrounding nature into the

part of the interior and get the volume better combined with the environment.

The interior focuses on the symbiosis of rough and subtle elements and their balance.



From the outset, the owner envisioned a summer house where the entire family could come together and enjoy quality time, particularly during the warmer months. However, given its proximity to Tbilisi, it was also envisaged as a weekend getaway destination. This dual purpose guided our approach to design, ensuring that the space was not only conducive to leisurely summer activities but also offered a tranquil retreat for brief escapes from the city hustle.



As depicted in the bird's-eye view sketch, the central area is dominated by an expansive open-air swimming pool, with the main building positioned to overlook it.

Adjacent to this, perpendicular to the main structure, lies the cellar building. Here, you can find qvevri vessels, alongside a generously sized dining area complete with a welcoming fireplace. Additionally, there's an auxiliary kitchen equipped to host traditional supra gatherings, adding to the overall charm and functionality of the space.

Bird's-eye view of the project / sketch

During the project collaboration with the client, we made several visits to the site at different times and in various weather conditions. This allowed us to thoroughly comprehend the site and draw inspiration from its unique characteristics. By immersing ourselves in the environment firsthand, we gained valuable insights into its natural elements, such as how sunlight plays on the landscape or how the terrain changes with the seasons. These visits not only helped us understand the practical aspects of the site but also sparked creative ideas that enriched the project's design process.

With only basic information provided by the owner, we embarked on transforming these foundational details into a comprehensive project. Through careful analysis and creative interpretation, we fleshed out the initial concepts, filling in the gaps with our expertise and ingenuity. This process involved thorough research, brainstorming sessions, and iterative refinement, ensuring that every aspect of the project aligned with the client's vision.

Since we shared the same vision with the client, the main concept of the project received swift approval from their end. With this alignment in place, our focus shifted towards meticulous attention to detail. We dedicated ourselves to refining every aspect of the project, ensuring that each detail contributed harmoniously to the overarching concept. By prioritizing precision and craftsmanship, we aimed to elevate the project beyond expectations, delivering a result that not only met but exceeded the client's aspirations.

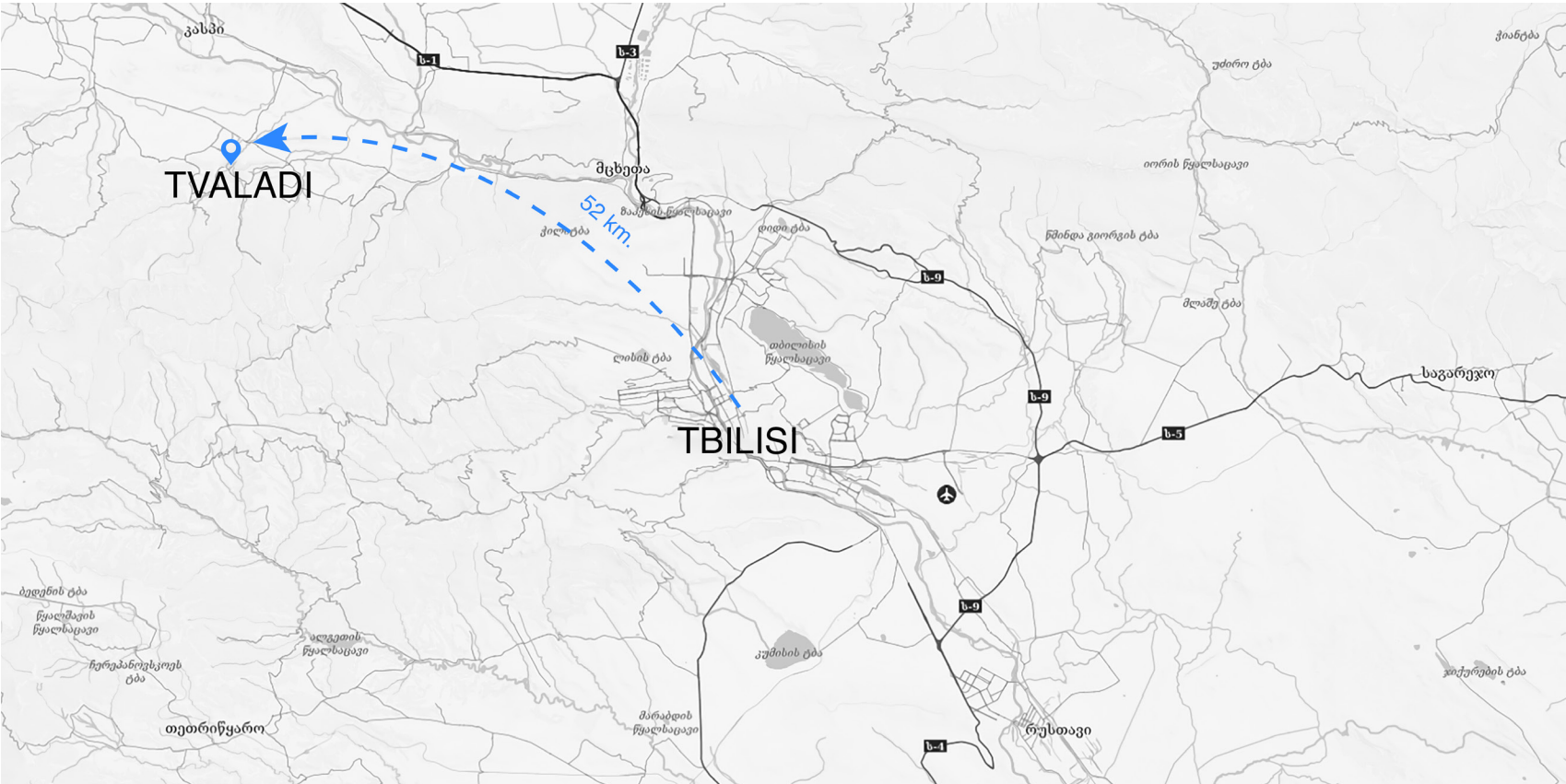


Approved vizualizations



B. Location

Location and position of the development.



VILLAGE TVALADI



Tvaladi village nestles in the rugged embrace of the Caucasus Mountains, its picturesque setting enhanced by lush greenery and the tranquil murmur of nearby streams. Perched at an altitude that offers panoramic views of the surrounding valleys, the village enjoys a sense of isolation, yet remains connected to the vibrant cultural tapestry of the region. With its rustic charm and timeless allure, Tvaladi is a haven for those seeking respite from the bustle of modern life.

The project site is strategically positioned to capture the breathtaking vista of the majestic Caucasus Mountains. Situated in perfect alignment with the natural contours of the landscape, it offers an uninterrupted panorama of the rugged peaks, cloaked in the ethereal glow of dawn or bathed in the warm hues of sunset. This deliberate placement ensures that residents and visitors alike can immerse themselves in the awe-inspiring beauty of the mountainous scenery, creating an ambiance of serenity and tranquility that complements the architectural vision of the project.

The architectural style characterized by the use of stone imbues the village with a distinctive visual identity. This served as one of our inspirations to employ the same material, albeit reimagined in contemporary forms and designs.

Tvaladi is a village in eastern Georgia , in Kaspi municipality , Shida Kartli district , in Kavtishkevi community. It is located in the valley of the Kavturi River (the right tributary of Mtkvari). 780 meters above sea level , it is 14 kilometers away from the Caspian Sea .

In the feudal age, Gholadi was the summer residence of the kings of Kartli . A church and ruins of buildings from the middle feudal age have been preserved . The population calls them the seat and palace of the Rostom king.



Village view



Old remains



St. George church

Project sight

During our first visit to the site, we were met with warm, sunny weather. From the outset, we were aware of the presence of an old building on the site, which we ultimately decided to demolish. This action provided us with a substantial, clear space to accommodate all the facilities for the project. Despite the demolition, we made sure to preserve all the existing trees on the site, maintaining their original positions. Additionally, we introduced numerous additional trees, further enriching the natural environment.

From the outset, our goal was clear: to fashion a space with an unforgettable soul. This drove our efforts to infuse every element with meaning and resonance, ensuring a lasting impact on all who encountered it.



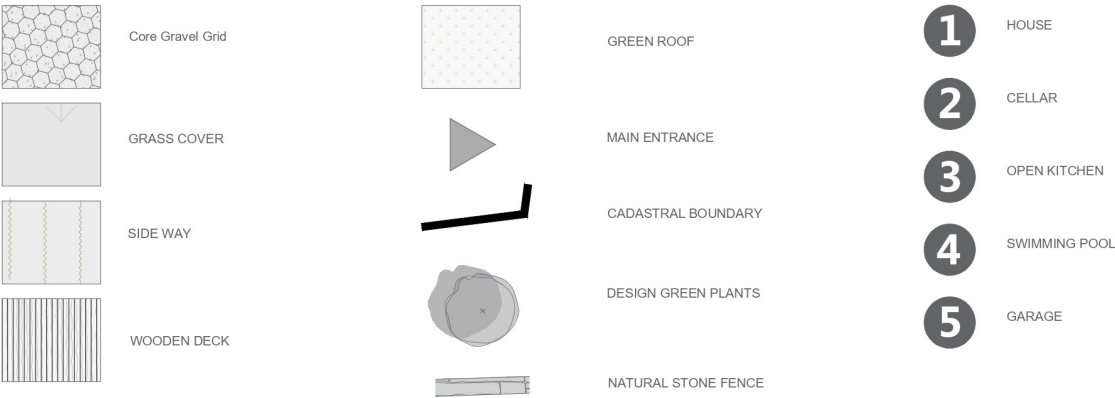
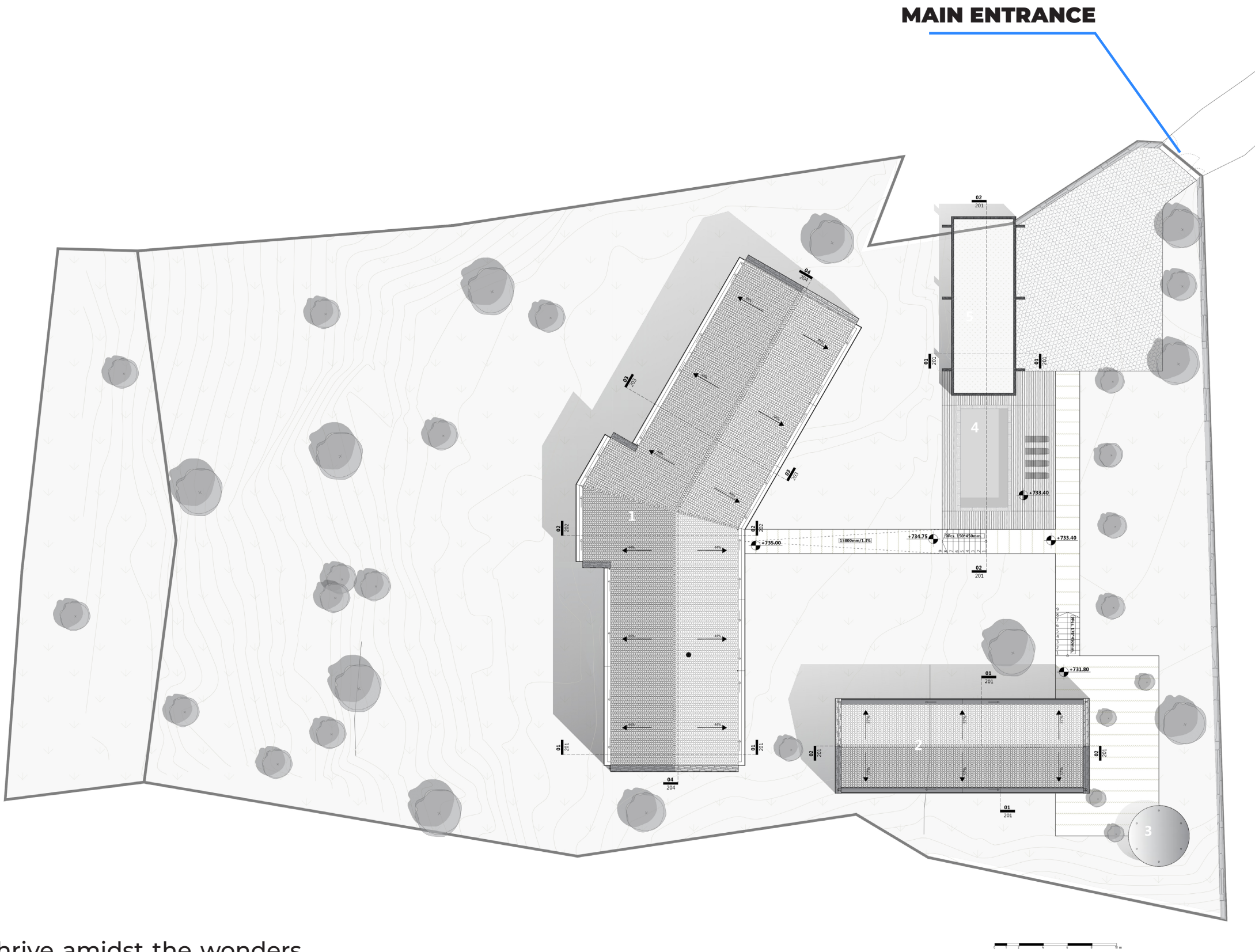
Real photos from the Project site

PRIVATE HOUSE IN TVALADI

The site plan reveals a layout where the main entrance opens to a car park featuring a verdant rooftop, offering a pleasant green view from the house. Further along, a central swimming pool serves as a focal point, surrounded by a pathway leading to the asymmetrical design of the house, providing dual perspectives from its sides.

In the gently sloping backyard, a diverse array of fruit trees finds their home, creating a vibrant orchard that promises seasonal delights. This natural setting not only provides a bountiful harvest but also serves as a playground for the children, offering ample space for exploration, adventure, and imaginative play. From climbing trees to hide-and-seek, the backyard becomes a dynamic landscape where young

minds can thrive amidst the wonders of nature. Positioned slightly lower, the cellar building cleverly preserves the panoramic views from the house terrace, allowing the surrounding landscape to remain uninterrupted. In fact, the natural clay roofing of the cellar becomes a captivating feature, seamlessly integrating into the vista and enhancing the overall aesthetic appeal of the property.



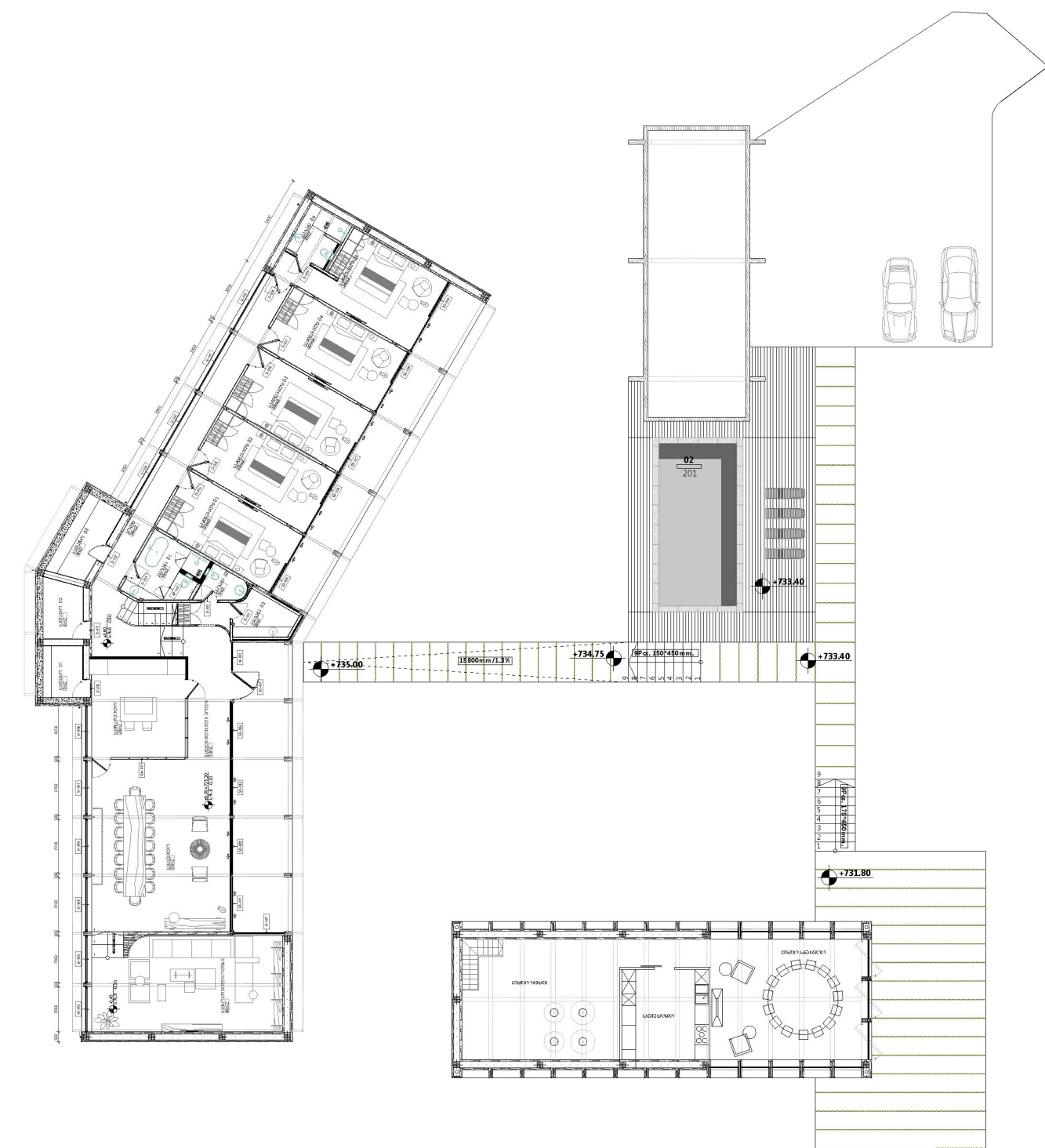


C. Architecture and use of space

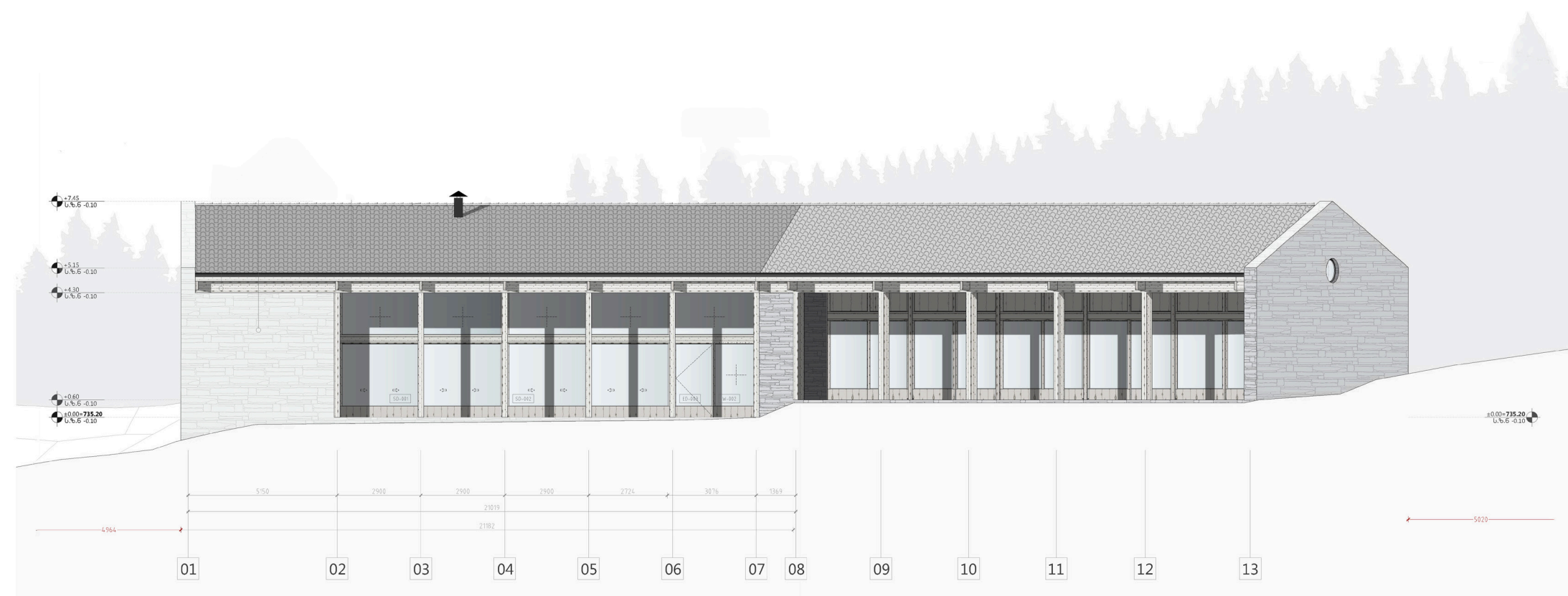
Main building

Floorplans of the property.

The main entrance to the building is centrally located, serving as a gateway to the harmoniously zoned spaces within. To the left, one discovers the heart of the home, where the kitchen, dining area, and living rooms seamlessly flow together, fostering a sense of connectivity and conviviality. On the right side, a tranquil sanctuary awaits, comprising the bedrooms, each adorned with its own terrace offering captivating views of the majestic mountains. This thoughtful layout ensures that every room, regardless of its function, enjoys the privilege of a terrace, allowing residents to bask in the beauty of the natural surroundings from every corner of the abode.



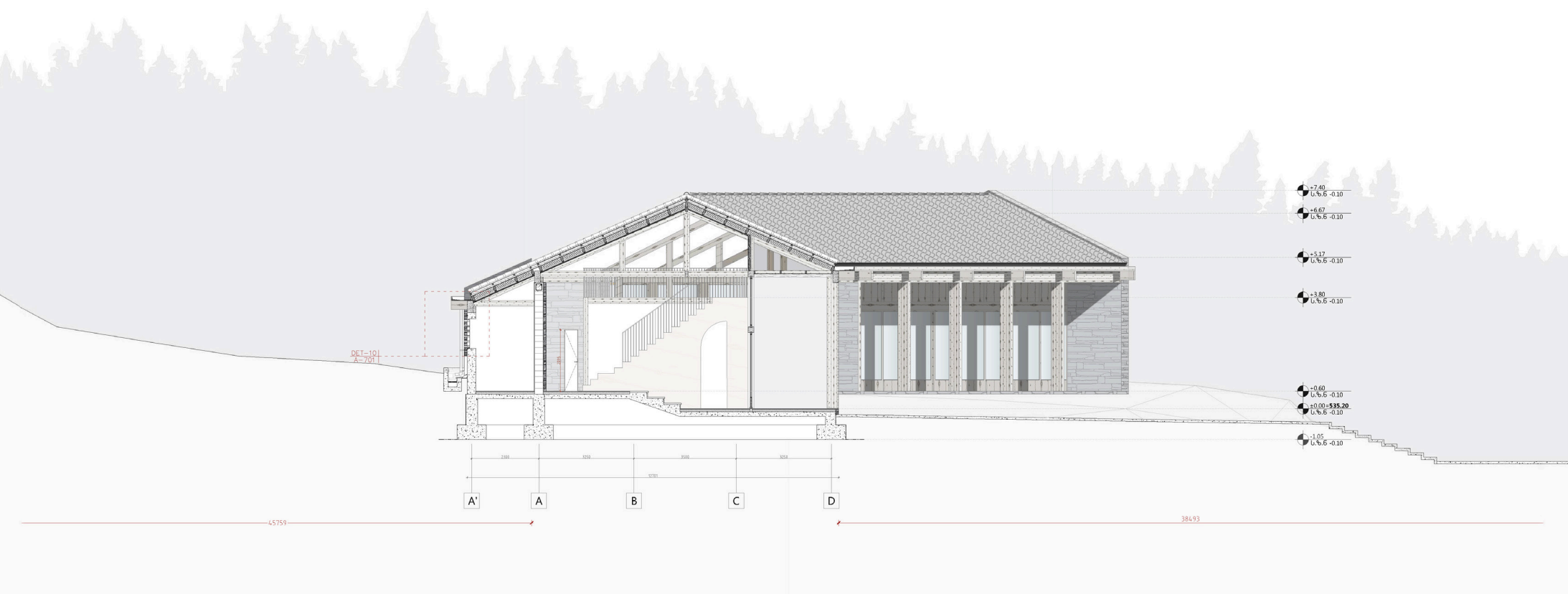
PRIVATE HOUSE IN TVALADI



With a generous 6-meter ceiling height above the four bedrooms, we've envisioned an expansive open attic space that transcends mere storage. Here, a realm of leisure and entertainment unfolds, offering a dedicated playing area for billiards and table tennis. This versatile space not only maximizes vertical volume but also adds an element of recreation and fun to the home, providing a retreat where family and friends can gather for lively games and cherished memories.

Incorporating this massive wooden structure into the interior adds a striking and impressive element to the space.

Facade from the pool side

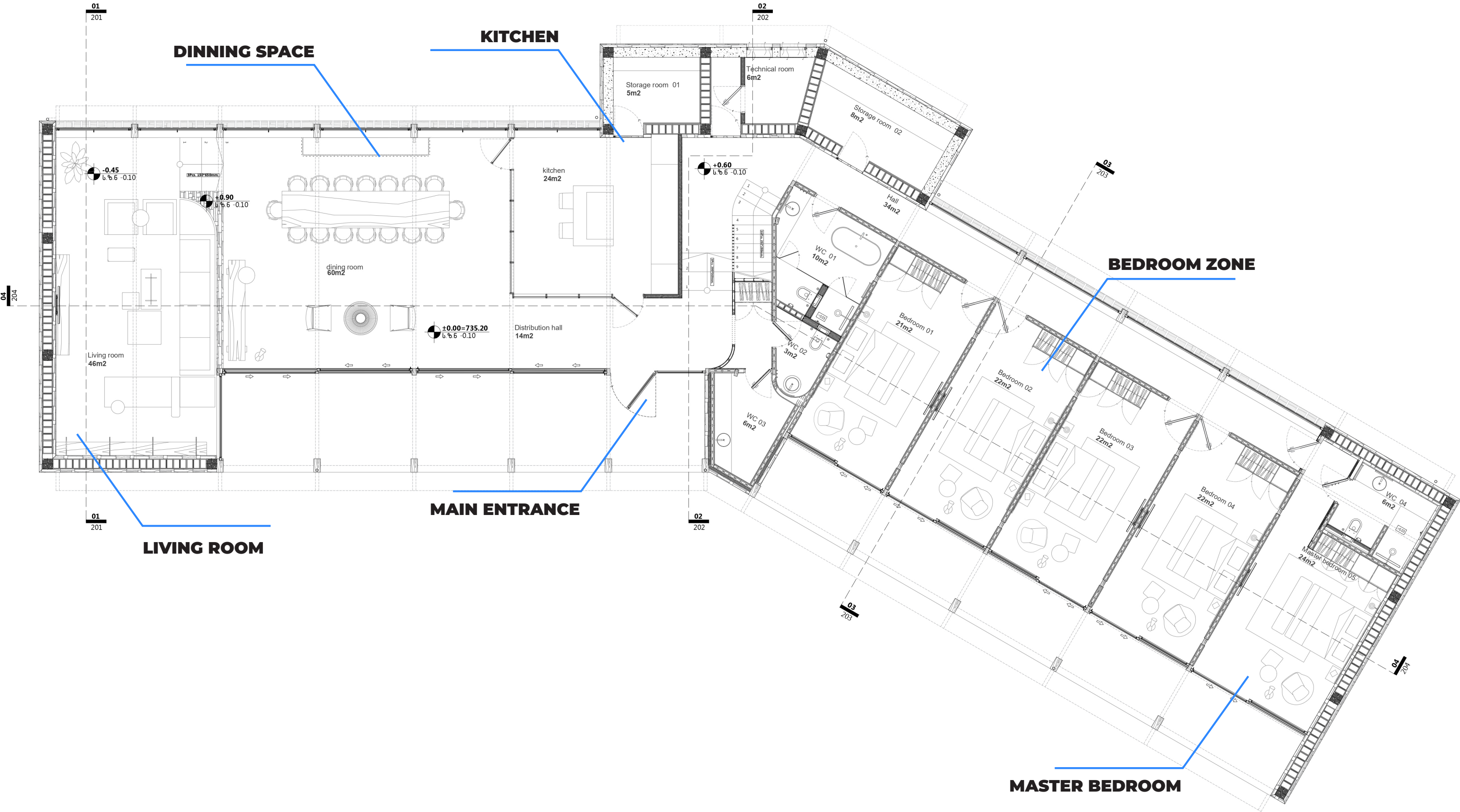


Section

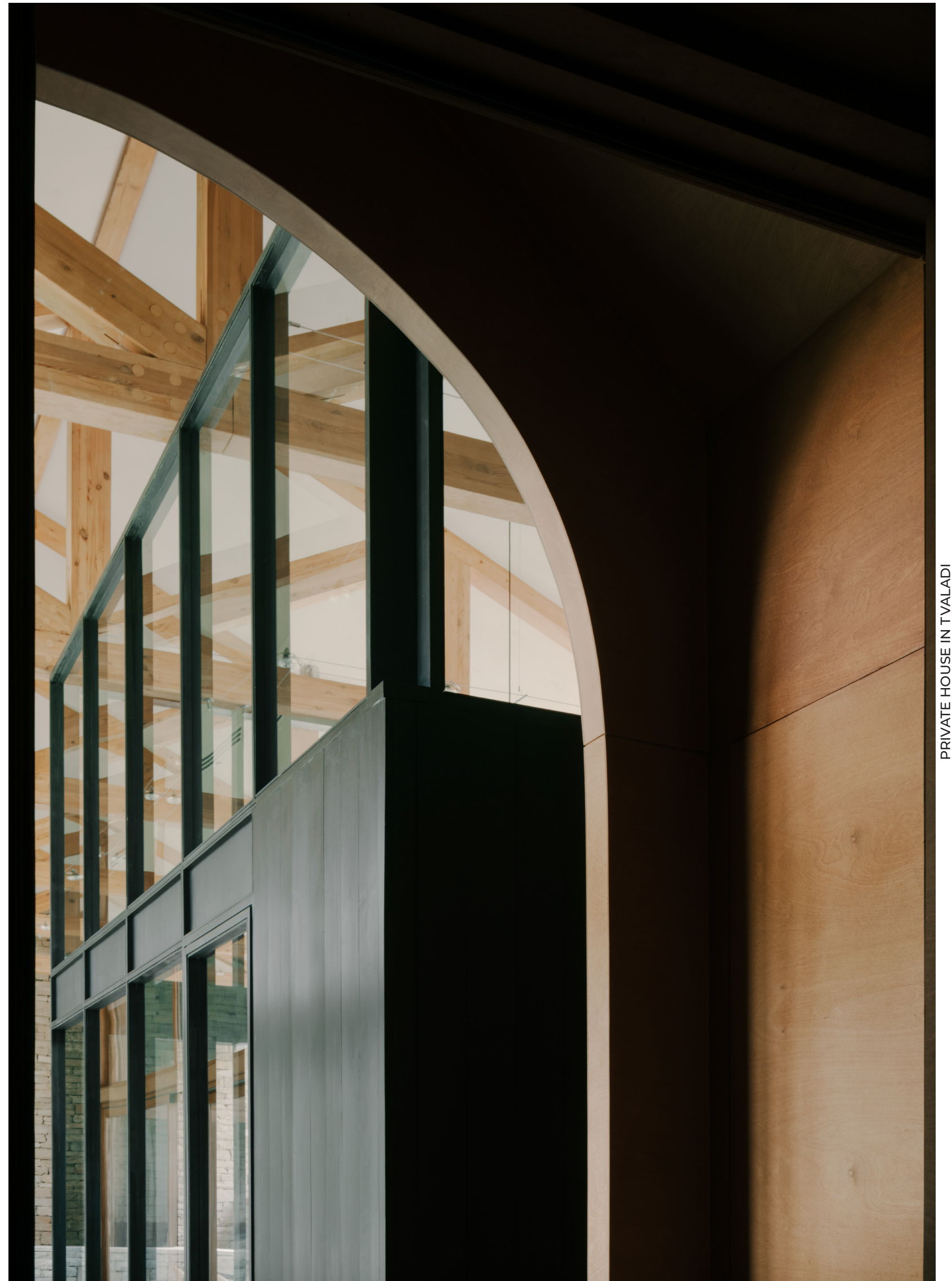




Room layouts



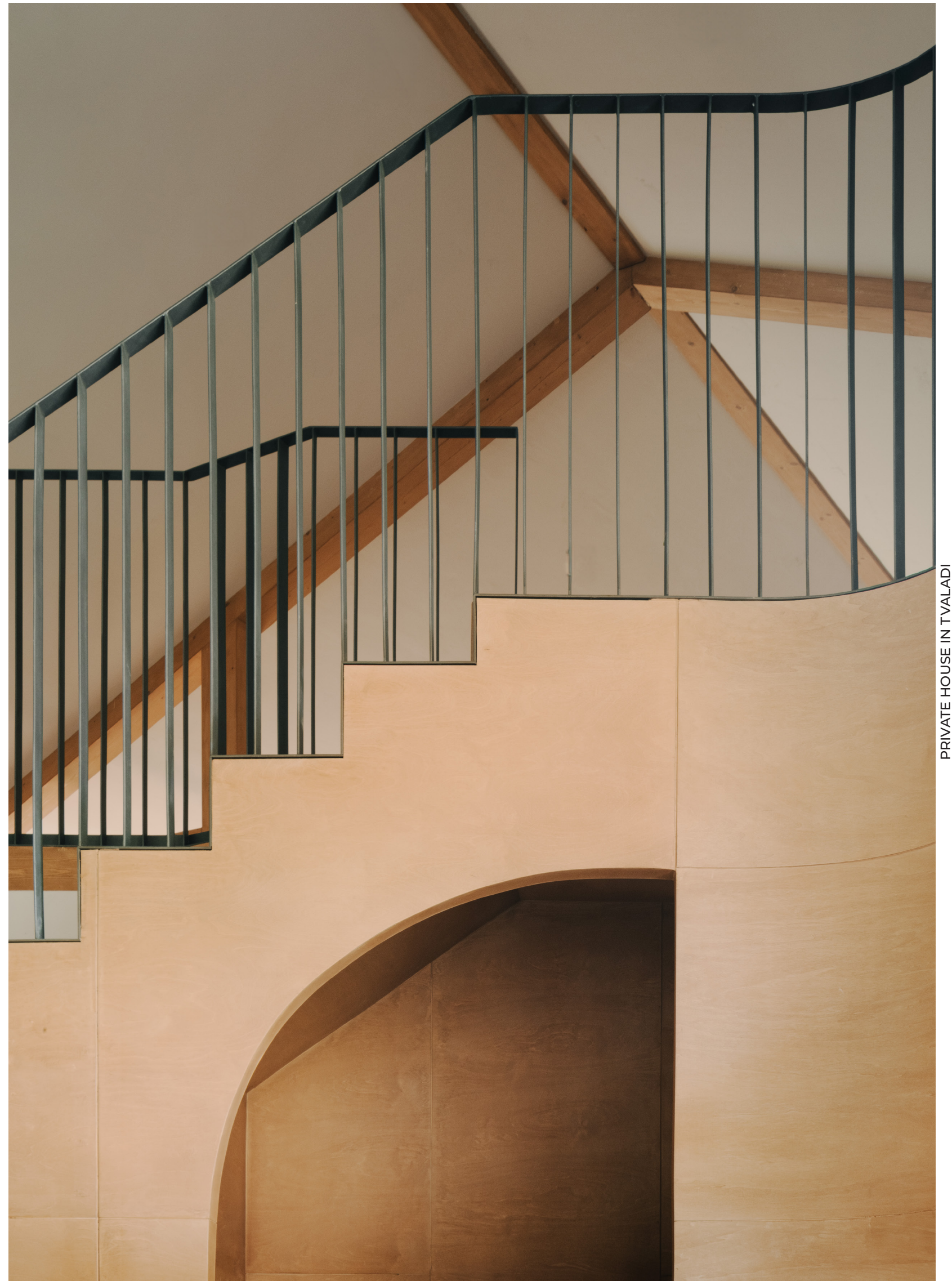












Products



763 Chair
Ton



Again Chair
Ton



Sitar
Saba Italia



MAUI
riva 1920



Panel lounge chair
Capdell



Desert lounge chair
Ferm living



Gobi
NS Product

PRIVATE HOUSE IN TVALADI



LA Roche
Nemo



Parliament
Nemo



Funiculi
Marset



MVV
Marset



Logo Wall
Nemo



COCO Chandelier
Leds c4



Flamingo
Vibia



Bubble Mirror
NS STUDIO

D. Appearance and finish

Our ultimate achievement is to realize the vision we planned and agreed upon with the client, delivering results that meet or exceed expectations.

Wood, stone, and steel serve as the foundation not only for the construction but also for the furniture and interior décor, creating a cohesive and harmonious aesthetic throughout the space.



Construction process



Finished Interior

The partially concealed cellar nestled into the sloped earth is a crucial component of the entire project, serving as a cornerstone of its design and functionality.



Construction process



Finished Interior

The wooden structures create a striking contrast against the white ceiling, adding depth and visual interest to the space.



Construction process



Finished Interior

The vast expanse of space is truly breathtaking, captivating all who enter with its sheer magnitude and grandeur.



Construction process



Finished Interior

The hallway benefits from abundant natural light and offers views of the backyard, enhancing its inviting atmosphere.



Construction process



Finished Interior

From every room, the view resembles a meticulously crafted piece of artwork, framed by the surrounding architecture to highlight its natural beauty.

PRIVATE HOUSE IN TVALADI

Materials

Selecting the right materials for the project is crucial, as they not only reflect the the very spirit of the place and set the mood but also possess the innate ability to age gracefully, adding character and charm over time.

The materials and color scheme we’ve selected are so closely tied to the essence of the location that they naturally envelop each room, leaving little need for additional adornment. With the interior already exuding a sense of completeness, only functional pieces are necessary to enhance its innate allure.



Stone work



Wooden structure



Wooden windows and stone details



Custom made wooden table



Green clay tiles



Mix of shapes and Forms above entrance



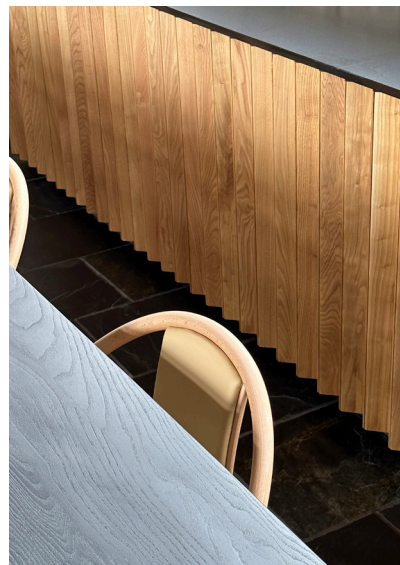
Wooden structural columns



Cellar Detail



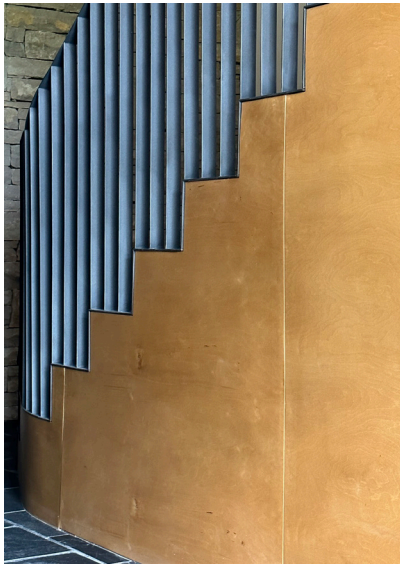
Interior Slate tiles



Custome made wooden cupboard



Vintage wooden table and Kauri wood chairs

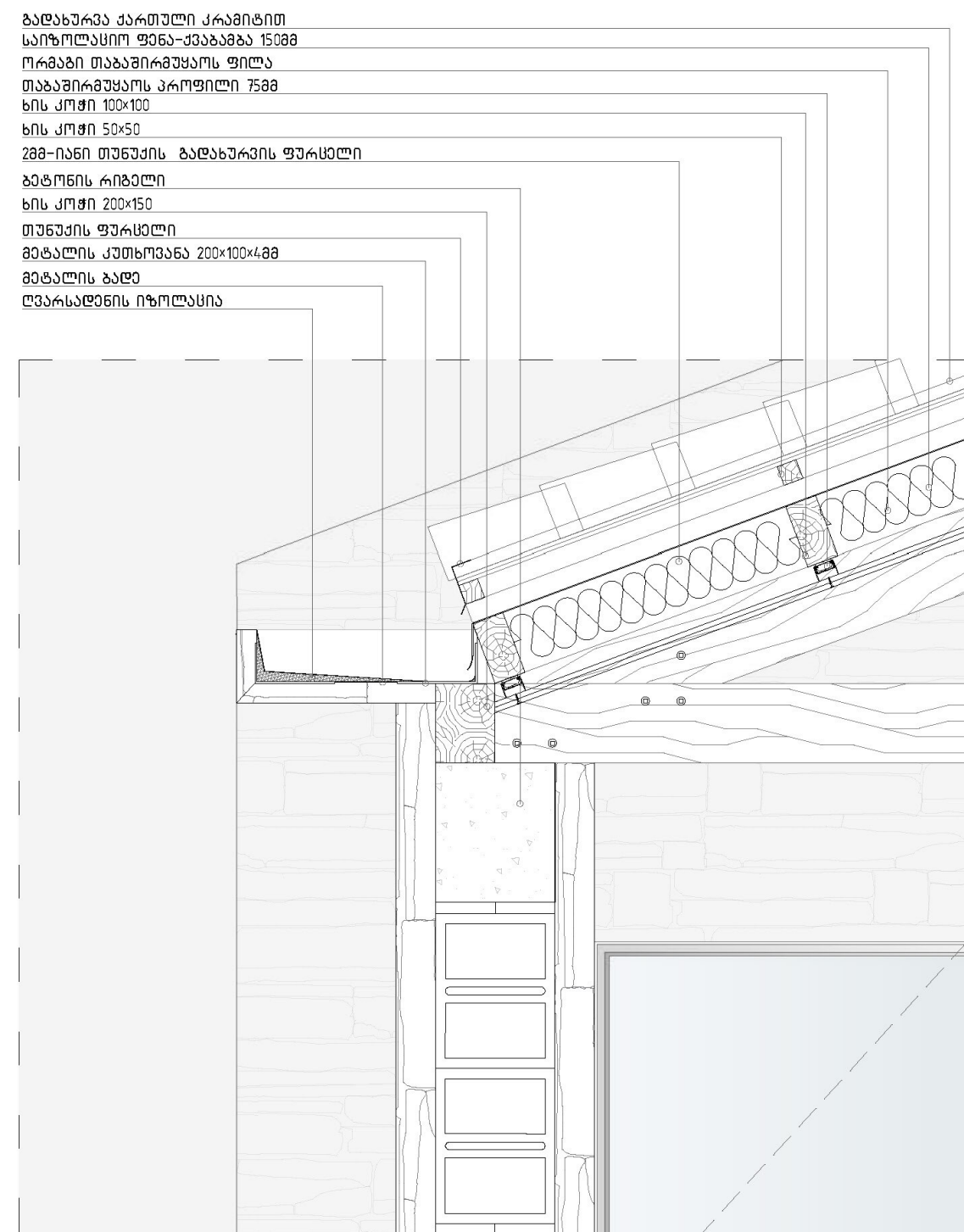


Steel Railing

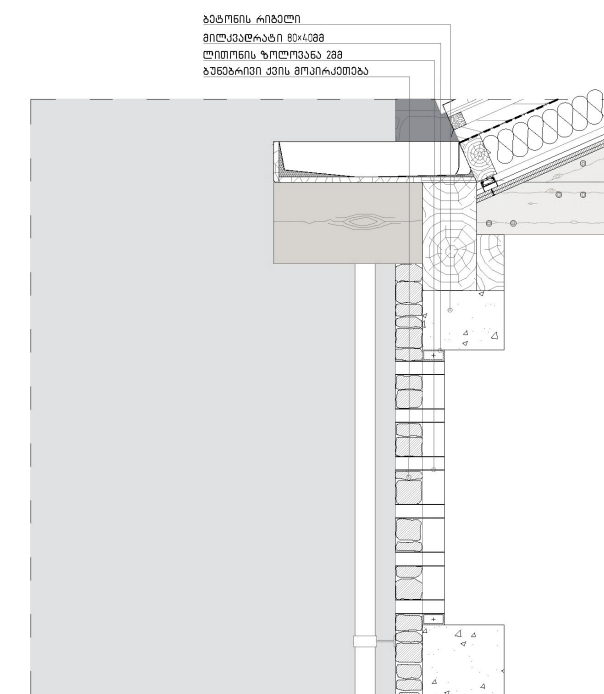
PRIVATE HOUSE IN TVALADI

Details

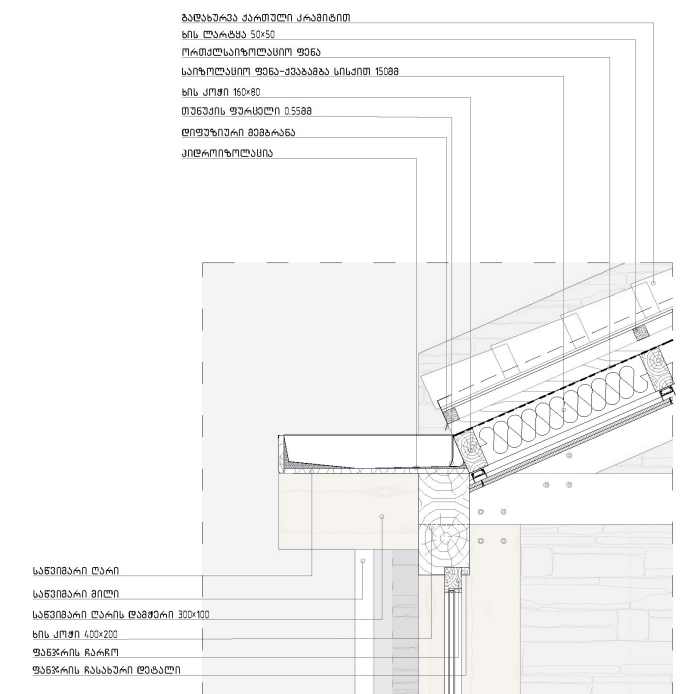
In the grand scheme of things, it's often the finer intricacies that wield the most significant impact, enriching the design and enriching the overall atmosphere.



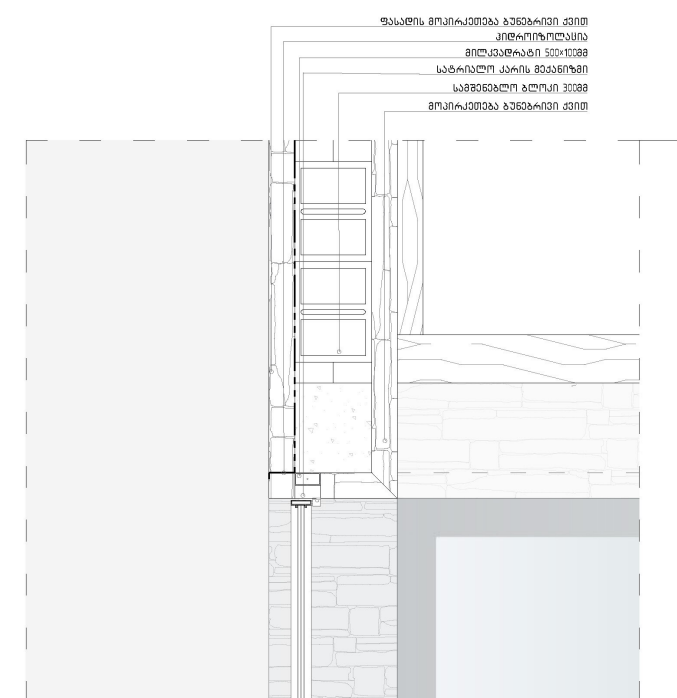
DET-05



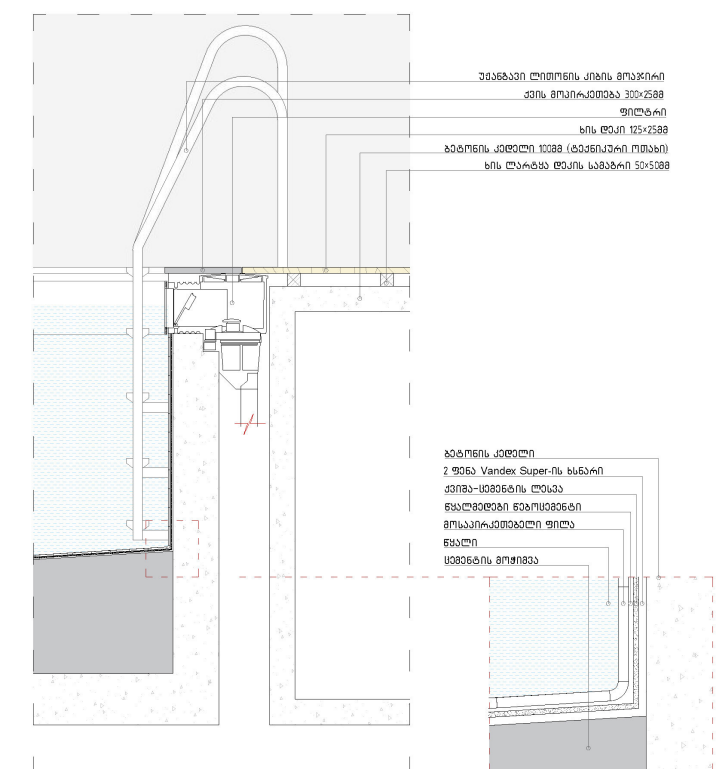
DET-10



DET-01



DET-06



DET-09

E. Sustainability, Energy Conservation and Innovation

Incorporating large-scale windows into the project has proven invaluable, providing ample natural lighting throughout the day, extending well into the evening hours. This design choice not only enhances the aesthetics of the space but also promotes a sense of openness and connection with the surrounding environment while minimizing the need for artificial lighting.

While the house is equipped with an AC system, the ample use of large sliding windows ensures excellent natural ventilation throughout the spaces. The choice of natural materials during construction allows for a comfortable climate inside the house, maintaining a cool ambiance in summer and warmth during the winter months.

Absolutely, the entire project is environmentally friendly, not only in terms of its exterior but also with its interior components. We've carefully selected materials that are sustainable, renewable, and non-toxic, ensuring that our impact on the environment is minimal. From the construction phase to the interior finishes, every aspect of the project reflects our commitment to eco-conscious design and living.

Expanding beyond the house, the owner's additional land will be utilized for fruit and vegetable cultivation, further enhancing sustainability. To complement this green initiative, we're integrating solar panels into the outdoor lighting system. This renewable energy source not only powers the lighting efficiently but also aligns with our commitment to reducing the project's environmental footprint.



F. Safety and security

For added safety and security, the house is equipped with a state-of-the-art fire alarm system that is seamlessly linked to a reputable security company. This ensures rapid response in the event of an emergency, providing peace of mind for the residents and safeguarding the property against potential risks.

Given the house's distance from the village center, having a caretaker is essential for its maintenance and security while the owners are away. This dedicated individual will oversee the property, ensuring it remains in optimal condition and providing peace of mind for the owners regarding its upkeep and security.

All materials utilized in the project meet rigorous safety standards and hold fire safety certificates, ensuring the utmost safety for the inhabitants. This commitment to using certified materials not only prioritizes the wellbeing of those within the house but also enhances the overall security and resilience of the structure.



PRIVATE HOUSE IN TVALADI



Bazaleti Str. #3,
0322 64 42 44
info@nsstudio.ge
press@nsstudio.ge

nsstudio.ge
Photographer: Grigory Sokolinsky



