

SOUTH BAY HOUSE

2024

Studio | 







SOUTH BAY HOUSE

South Bay Residence is situated on a flat, rural site in Ontario, a few hours east of Toronto. Positioned on a north-facing expanse, the site offers a vast open field bordered by a delicate grove of trees and a shoreline with unique, varied trees that became integral to the architectural concept.

To create a more dynamic interaction with the landscape, the design proposes three “living bars” that intersect and shift across the site. This configuration, as opposed to a single linear structure, generates outdoor microclimates that provide wind protection across seasons and selectively frame views. These deliberate interruptions reshape the experience of both the home and its surroundings, offering varied vantage points and an evolving spatial narrative.

A distinctive rethinking of the main living spaces introduces what we call “landscape” versus “portrait” orientations. While previous projects utilized a repeating rectangular grid with the long dimension shared across spaces this project rotates the rectangular grid seeing the short side shared. The resulting 48’ x 12’ living area expands the façade facing the view, reducing the perceived distance to the landscape. This shift dissolves the boundary between interior and exterior. When seated at the dining table or sofa, the proximity to expansive windows removes architectural obstructions from peripheral vision, drawing focus entirely outward.

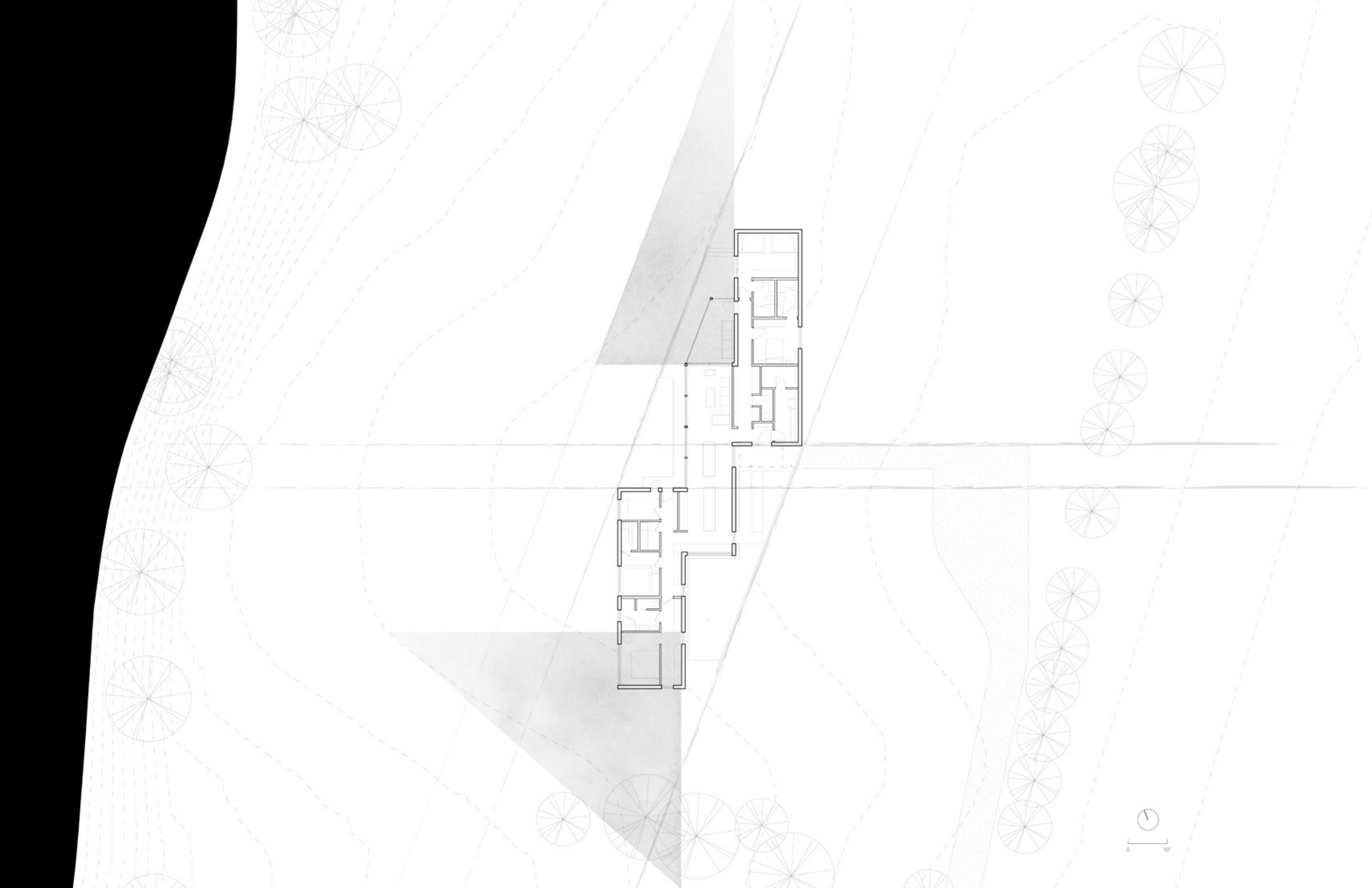
The roof form comprises three mirrored shed structures. At the main living bar, these forms intersect, creating protected outdoor spaces under a unified canopy that offers both shelter and solar shading. The resulting roofscape introduces a dynamic topography to an otherwise flat site, inviting the eye to traverse its undulating forms as one might follow rolling hills or jagged mountains. This approach balances practicality—shedding elements—with a sculptural energy that enriches both interior and exterior experiences. Bedrooms and living spaces benefit from the expressive geometry, enhancing the sense of volume and the project’s contemporary reinterpretation of rural vernacular architecture. The interior palette is restrained, predominantly clad in plywood, with white walls selectively introduced below a datum aligned with the roof geometry to highlight artwork. Wet areas, including an indoor spa, are finished in contrasting tile, offering a tactile and visual distinction.

Although the resulting architecture appears complex, its foundation lies in familiar proportions and vernacular forms. Its uniqueness emerges from the interplay of these shapes and their contrast with the landscape, producing a home that attempts to both frame and engage with its natural surroundings.

StudioAC Team: Sarah Reid, Mo Soroor, Jennifer Kudlats, Andrew Hill, Jonathan Miura
Build: Reeves Fine Homes
Images: Felix Michaud



















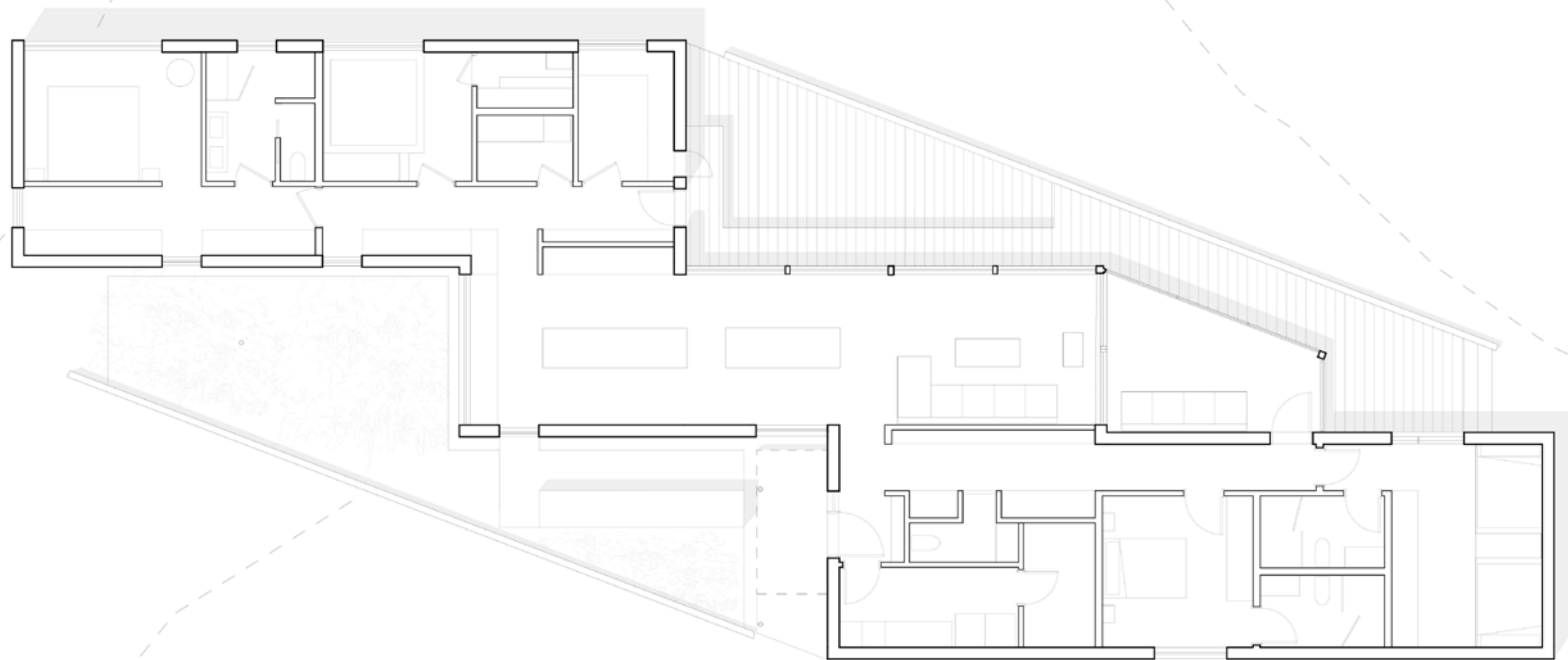












































Studio |

studio@archcollab.com
www.archcollab.com
647.341.0066

StudioAC Team

Andrew Hill
Jennifer Kudlats
Sarah Reid
Mohammed Soroor
Jonathan Miura

Build by:

Reeves Fine Homes

photos by:
Felix Michaud

