



Hacienda Wabi *by* R41

Hacienda Wabi

RA!

Project: Hacienda Wabi

Type: Residential Apartment Building

Date of completion: 10 Septiembre 2023

Area: 1,800m²

Location: Tulum, Quintana Roo, México

Hacienda Wabi is a residential complex nestled within the jungle, seamlessly blending into its natural surroundings. Promoted by Namus, a Tulum-based developer specializing in boutique projects and designed by RA!, the structure, composed of stairways and terraces, rises to create spaces that, over time, seem to surrender back to nature. The building's design seeks to reinterpret the passage of time through the lens of ruin aesthetics.

The staggered volumes, which recede skyward, evoke the

ancient settlements that once lined the area, generating a layout that ensures a consistent flow of light and air to each block. The terraces are framed by perimeter planters that drape the façade in greenery, giving the impression of nature reclaiming the space.

Inside, a large, fragmented courtyard creates intimate corners that provide access to the 15 apartments spread across three levels. Each level features terraces and winding pathways that lead to the semi-public areas, including the pool and recreational spaces.

Each floor offers distinct features: the ground level boasts expansive gardens and pools, the first level includes terraces and jacuzzis, while the second level features roof gardens with views extending to the treetops.

The building's material palette draws from local textures, with stone anchoring the base and Chukum finishing the upper levels. Neutral tones allow the jungle to play a starring role, as vegetation becomes an integral part of the walls and slabs, blending seamlessly with the architecture.



Team.

Architecture: RA!

Developer: Namus

Interiors: Namus + Casa Portal + RA!

Photography: Ariadna Polo

Video: Christian Velasco

Engineering:

EMX Structural Engineering.

Design team:

RA! (Pedro Ramírez de Aguilar, Santiago Sierra, Cristóbal Ramírez de Aguilar, Alejandro Hernández, Lourdes Gamez y Mateo Vázquez del Mercado.)



Photography.

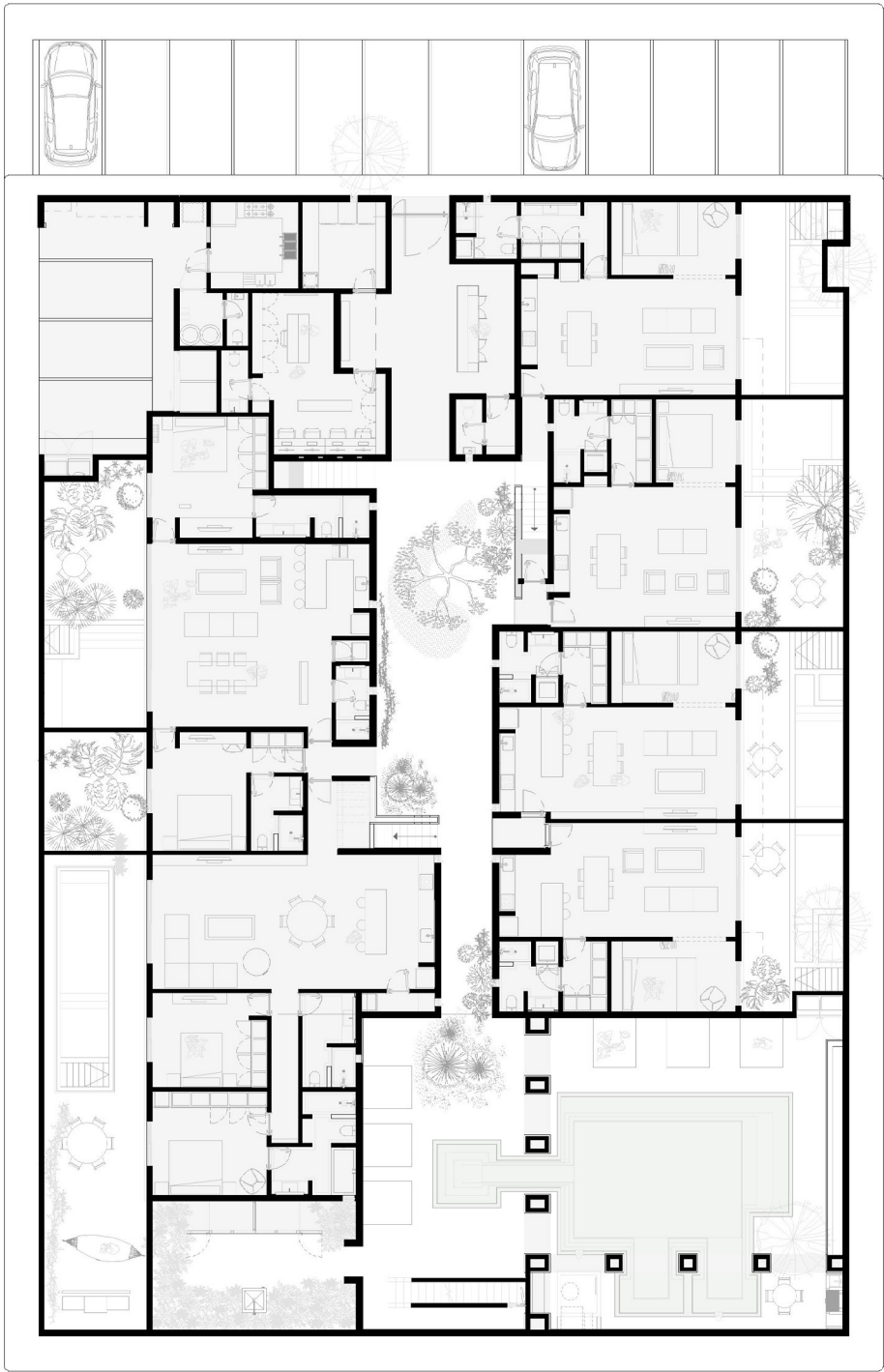


Photo: Ariadna Polo



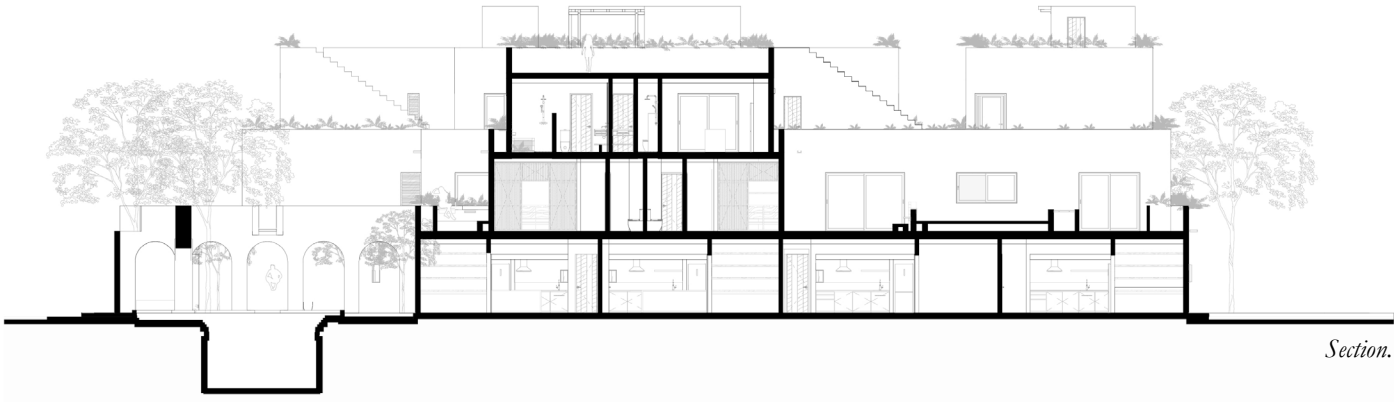
Photo: Ariadna Polo

Drawings.



Ground floor.

Drawings.

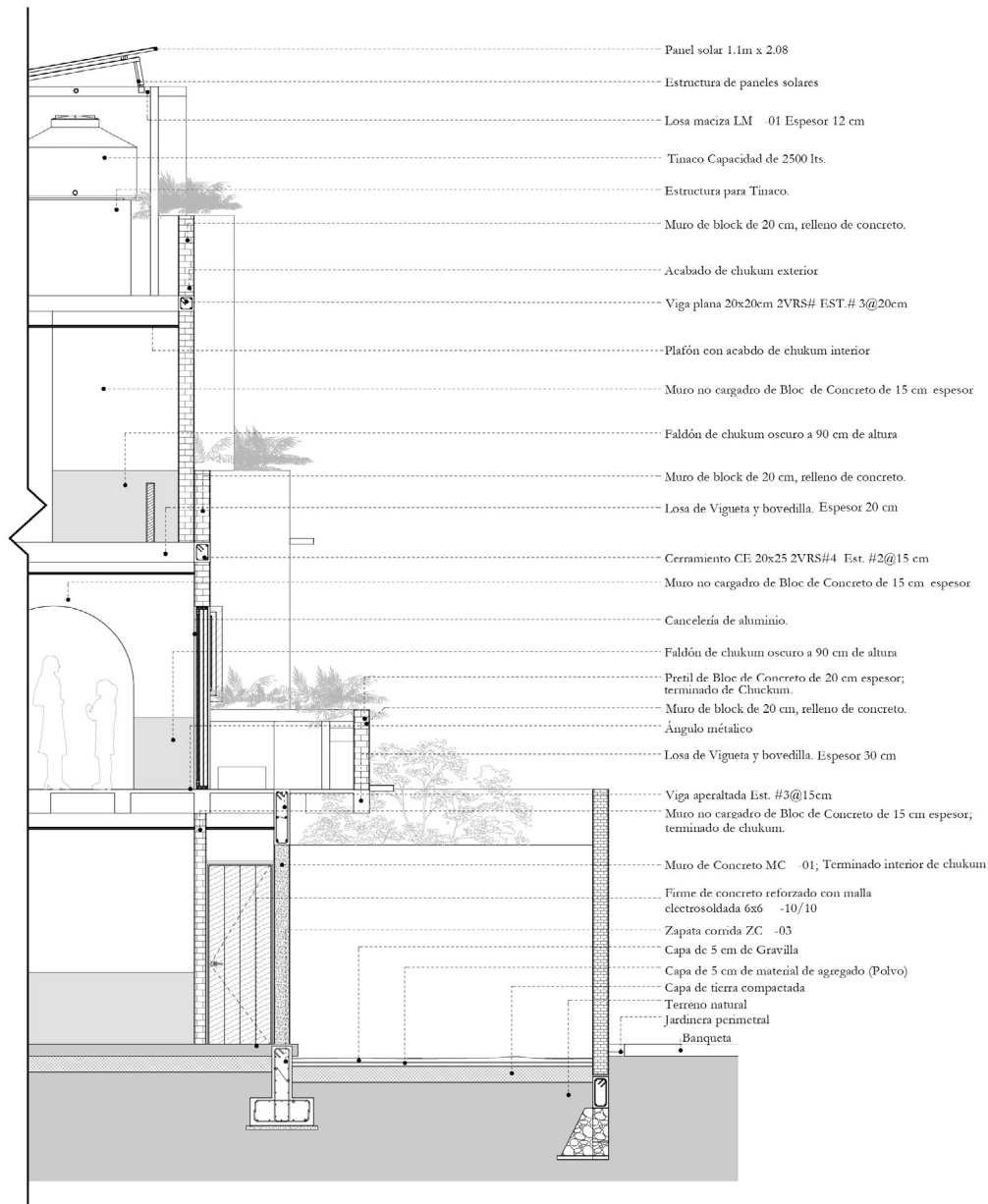


Section.



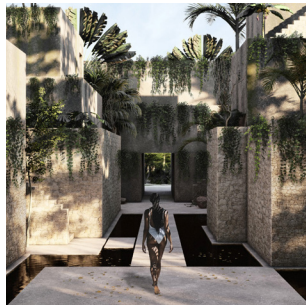
Elevation.

Drawings.



Façade Section.

Process.



[Link High Res Docs:](#) [Dropbox folder](#)

About RA!

RA! is an architectural firm founded by Pedro Ramírez de Aguilar, Santiago Sierra, and Cristóbal Ramírez de Aguilar in 2017, based in Mexico City.

RA! sees architecture as the study and creation of spaces that stimulate and shelter human beings. With this approach, RA! categorizes architecture based on human relationships: social, personal, and interpersonal, always placing the individual at the core of its design philosophy.

RA! is constantly exploring, making *experimentation* an integral part of its vision. Through experimental projects such as competitions, installations, and academic exercises, the firm explores new design possibilities and utilizes unfamiliar tools to maintain an ever-evolving perspective.

The studio seeks architectural solutions through questioning, research, and the use of various tools, from drawing to video production, models, and coordination with specialists. This enables RA! to express, explore, and communicate every detail with the aim of inspiring those who inhabit its creations.

RA! is actively involved in the construction of most of its projects in Mexico City, fostering strong relationships with construction workers and drawing inspiration from their artisanal techniques.

RA! embodies a spirit of cheerfulness and enthusiasm.

RA!

Londres 61, Colonia Juárez CDMX

info@raarq.com

www.raarq.com

Instagram [@ra_arquitectos](#)