

磁山部落 · 当8000年文化遗址遇见公共儿童空间

CISHAN TRIBE: WHERE 8000-YEAR CULTURAL RELICS ENCOUNTER PUBLIC CHILDREN'S SPACE

磁山部落，坐落于邯郸万象汇商业购物中心前的坡地景观广场，占地约3200㎡，是全国少有的以文化发源为主题的特色儿童亲子活动场地。

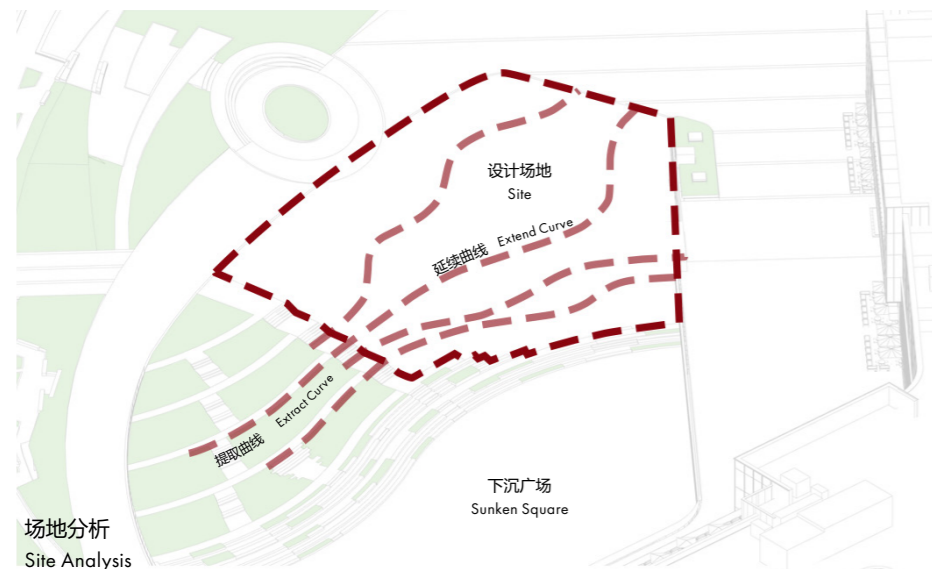
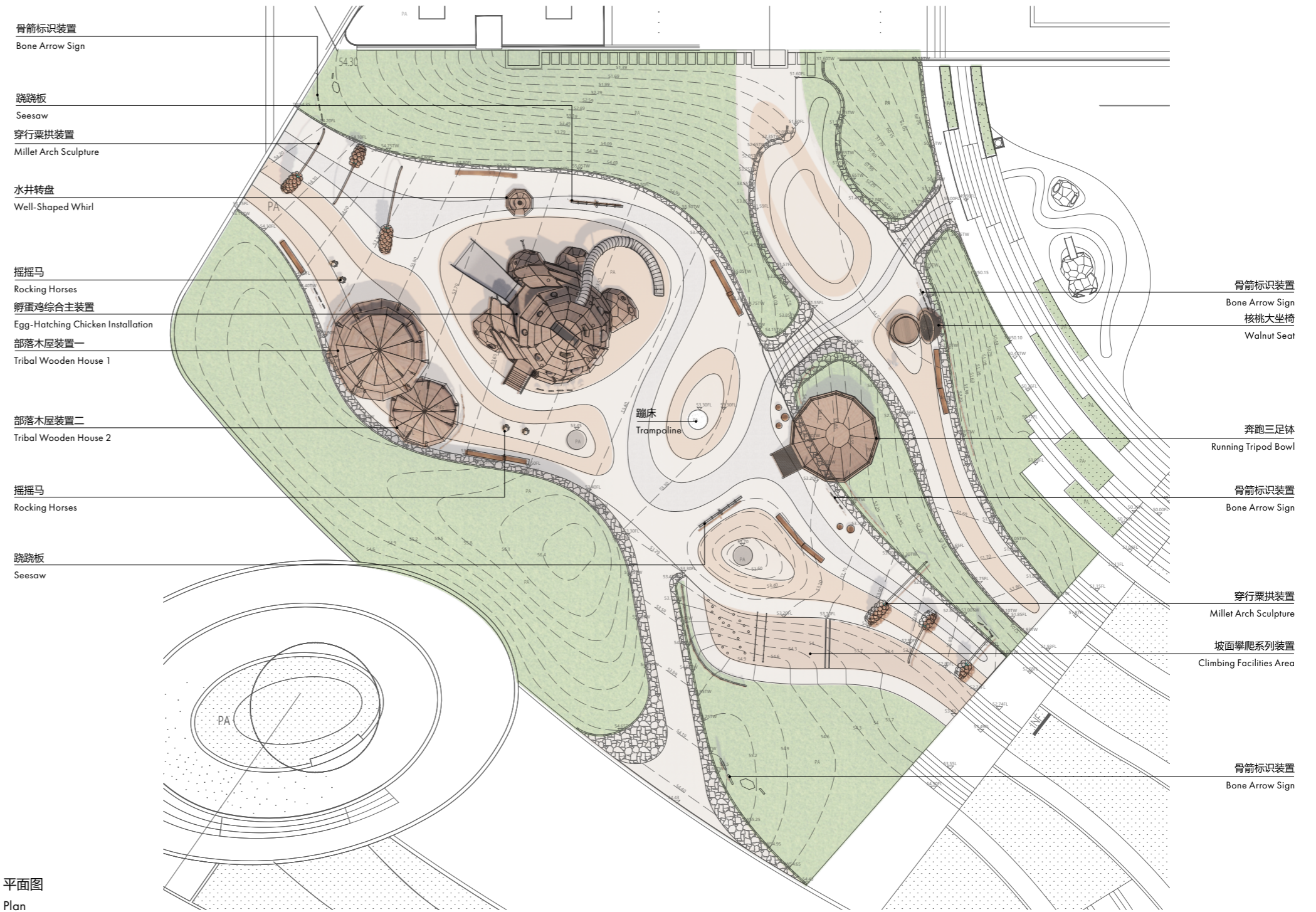
Cishan Tribe, located on a sloped landscape plaza in front of the Handan MixC One Mall, covering approximately 3,200 sqm. It is a unique children's playscape themed around cultural heritage.

项目地址：中国河北省邯郸市经济开发区廉颇北大街277号·万象汇广场

委托业主：华润置地
 占地面积：3200㎡
 设计：上海喜随设计
 状态：建成
 设计时间：2023年9月8日
 建成时间：2024年4月30日
 主要材料：塑木板

Location: MixC One Plaza, No. 277, Lianpo North Street, Economic Development Zone, Handan City, Hebei Province, China

Developer: China Resources Land Ltd.
 Design: XISUI Design
 Scope: 3200㎡
 Status: Built
 Completion: 30th April 2024
 Main Material: Wood-Plastic Composites



项目背景与挑战

该项目位于邯郸东站以东2公里，坐落在华润万象汇商业综合体前的广场绿地上，由该商业综合体的开发商开发。业主希望将这片场地打造成面向市民的户外免费儿童活动空间，兼具点燃地区活力的意义，向商业中心吸引人气、关注度和客流。

河北省邯郸市是一座拥有3100年建城史的文化名城，其武安磁山文化是新石器时代的重要代表。约8000年前，新石器早期的磁山先民在此繁衍，开启了农业文明新篇章，是中华文明的重要源头之一。磁山还是世界上最早发现粮食粟、家鸡和中原核桃之地，改写了世界粟作农业、家鸡驯养和核桃产地的历史认知。

项目的主要挑战在于如何将这一文化遗址的历史痕迹以趣味参与的方式融入儿童活动空间，既要回应当地丰富的历史文脉，又要满足现代商业和亲子活动的需求，同时还需要展现简洁统一的设计效果，保持场地的包容性和不喧闹的天际线。

Project Background and Challenges

Situated 2 kilometers east of Handan East Station, the Cishan Tribe is developed by the same proprietor as the MixC One Mall. The vision was to create an outdoor, free children's activity space for the public that would also ignite regional vitality and attract popularity, attention, and foot traffic to the commercial center.

Handan, a city with a rich 3,100-year urban history, is historically significant due to the Wu'an Cishan culture from the Neolithic era, marking the new chapter of agricultural civilization and the earliest discovery of millet and hens globally.

The challenge was to integrate the historical narrative of cultural relics into the children's activity space in an engaging way, responding to the local historical context while meeting the needs of contemporary commerce and parent-child activities, and presenting a concise and cohesive design that maintains the inclusiveness of the site and a non-cluttered skyline.

设计解决方案

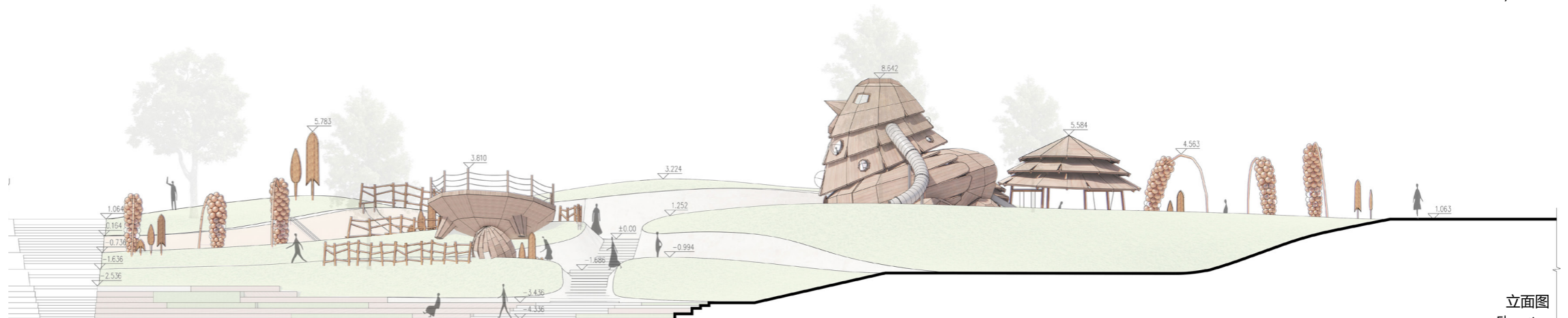
设计团队以邯郸独有的文脉符号为灵感，提取了圆顶木屋、家鸡、黍粟、核桃等元素，将8000年前磁山的原始部落生活特色融入到儿童活动设施中，重现磁山先民的部落生活场景。通过大量使用原木、塑木板和石板等天然材料，重现了原始民居的质朴风貌，让孩子们在玩耍中仿佛穿越到远古部落。

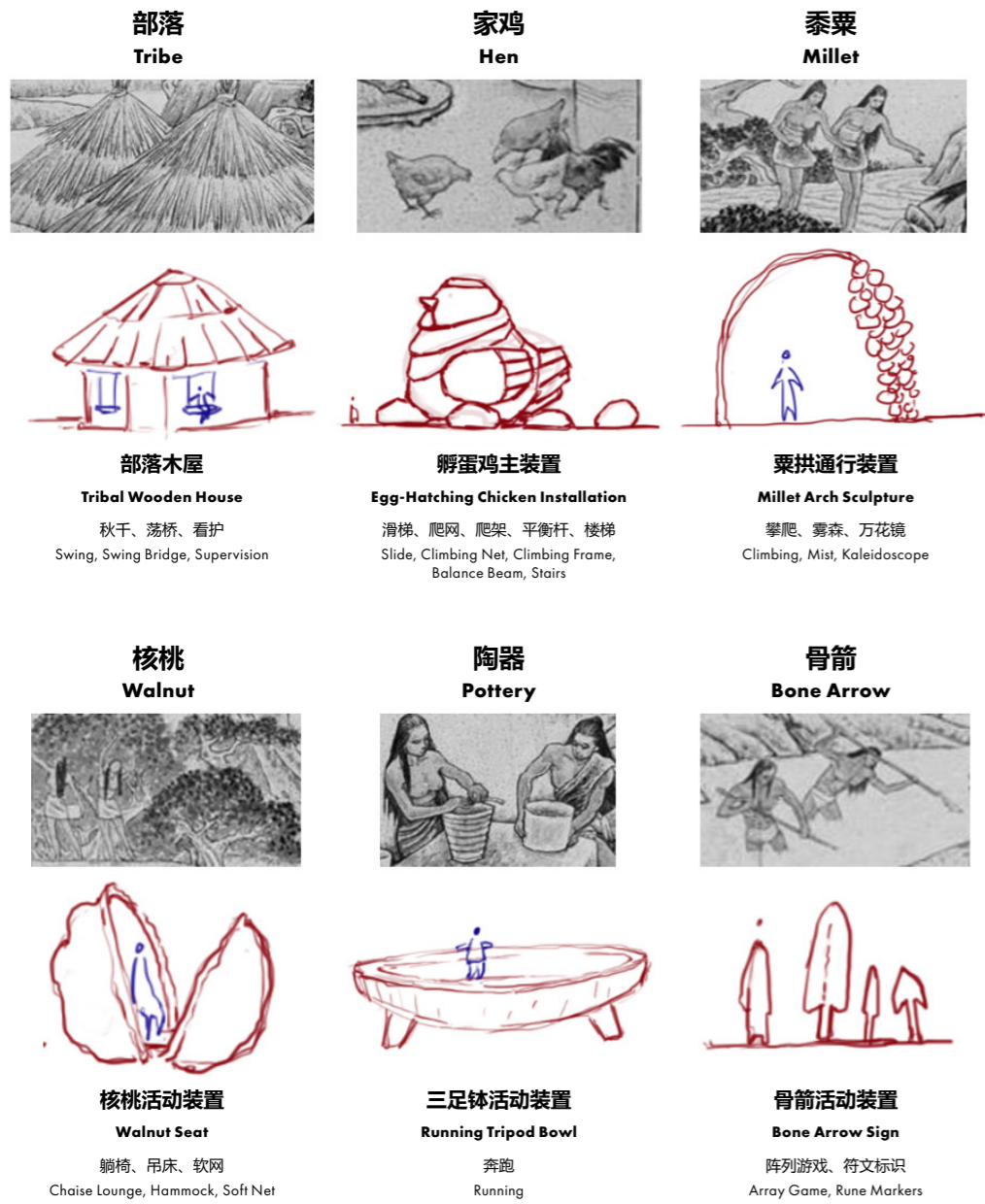
Design Solutions

Drawing inspiration from Handan's distinct historical symbols, the design team incorporated elements such as round-topped wooden huts, domestic chickens, millet, and walnuts into children's activity facilities, reflecting the primitive tribal lifestyle of Cishan 8,000 years ago. The use of natural materials, including raw woods, wood-plastic composites, and stones, preserves the features of primitive dwellings and allows children to feel as if they have traveled back to an ancient tribe while playing.

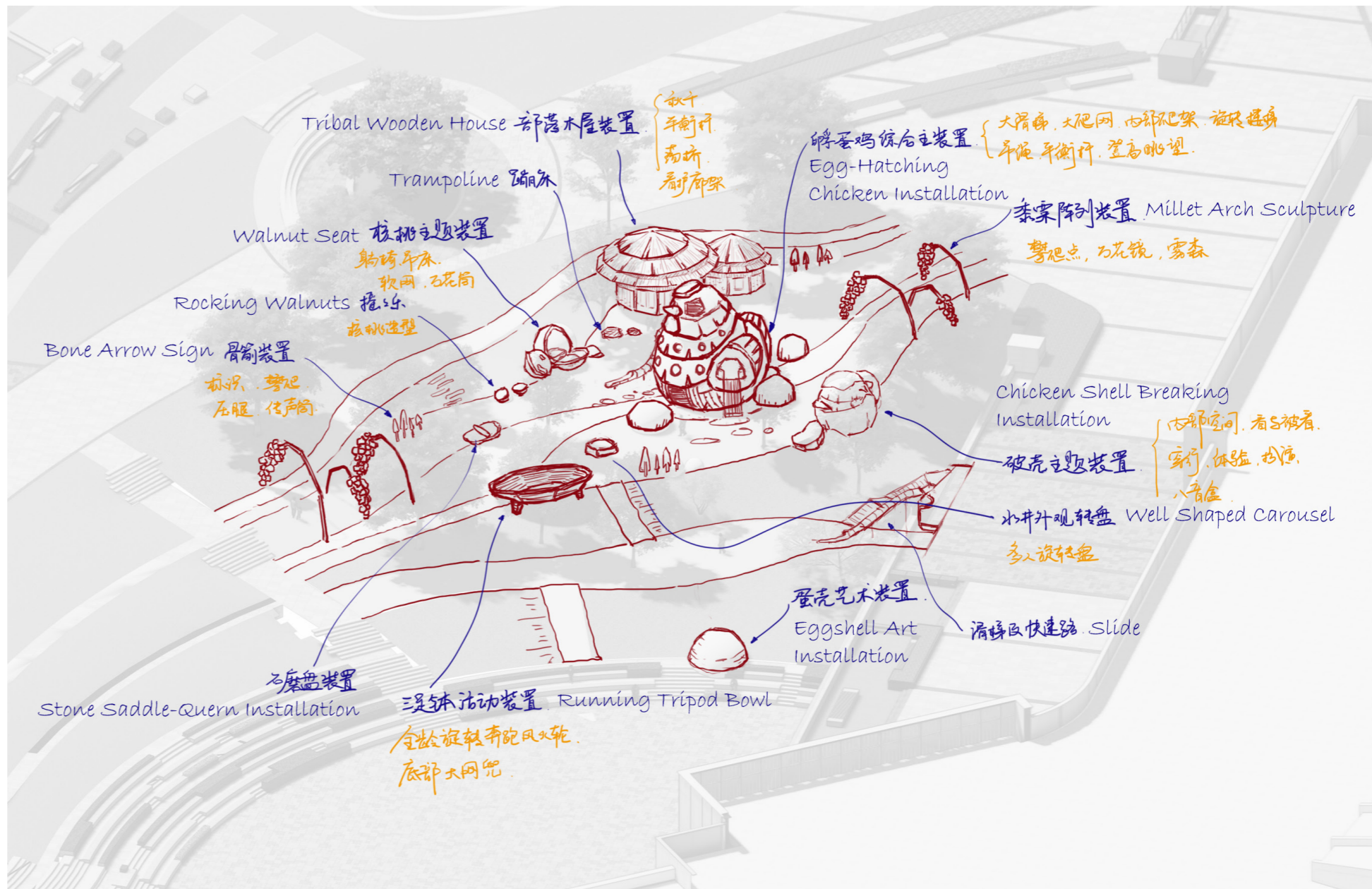


鸟瞰图
Bird's-eye View

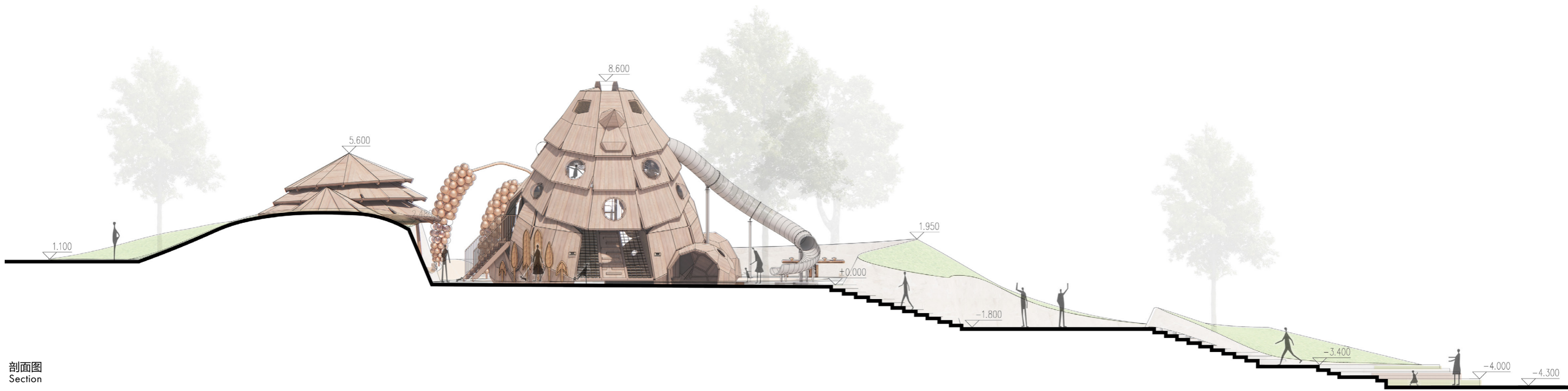




设计元素——从磁山文化元素中提取
Design Elements — Extracted from the Cishan Cultural Elements

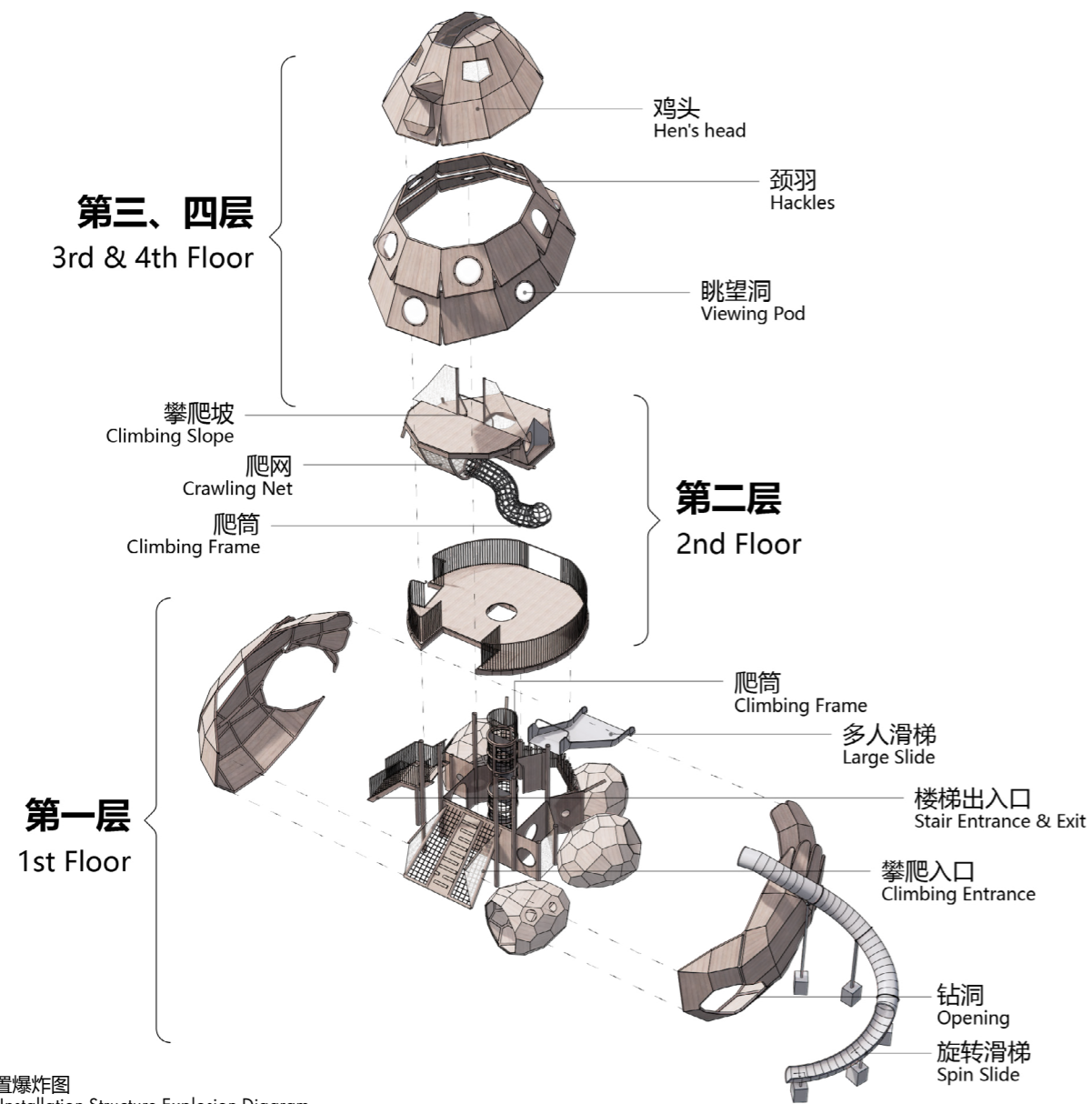


模拟沉浸有趣的磁山部落世界，在玩耍中了解脚下大地的起源
Simulate and Immerse Yourself in the Interesting World of the Cishan Tribe, and Learn About the Origin of the Earth Beneath Your Feet while Playing



剖面图
Section





主装置爆炸图
Main Installation Structure Explosion Diagram

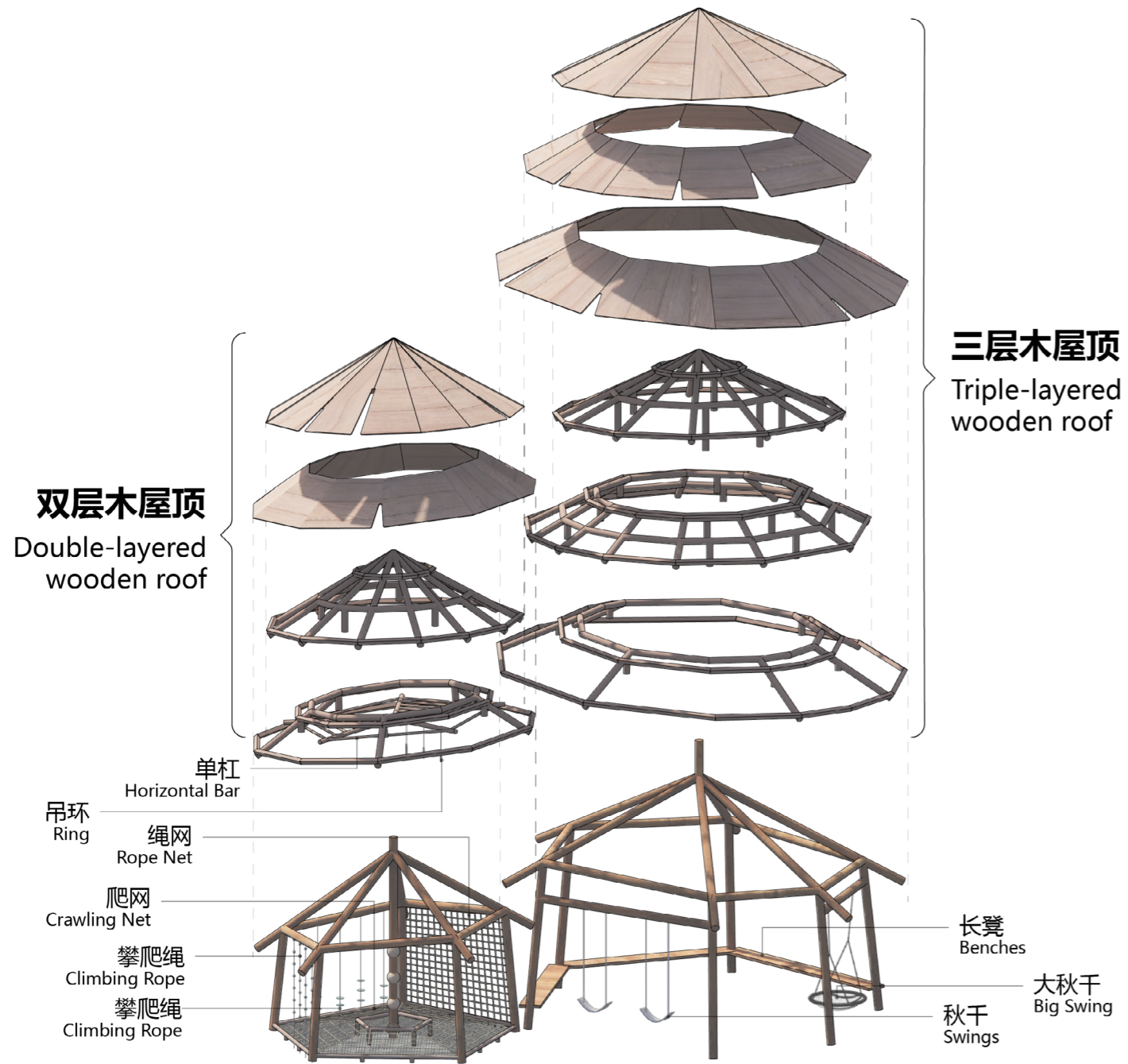
主要装置包括:

孵蛋鸡主装置: 一个集滑梯、攀爬网、钻筒、眺望点等于一体的多功能游乐装置。灵感来自孵蛋的母鸡形象，它象征着生命的孕育和磁山的丰富文化遗产。在“孕育”的文化寓意之上，它还展现着邯郸这座受磁山影响的文化城市数千年不间断的历史，反映了磁山作为世界上最早的鸡驯化和繁殖地的独特历史意义。

Key installations include:

Egg-Hatching Chicken Installation: Incorporating functions such as slides, climbing nets, crawling tubes, and observation decks, it is inspired by a hen incubating eggs. It symbolizes nurturing and the rich heritage of Cishan culture. This not only represents “nurturing” but also signifies the uninterrupted history of Handan, a cultural city influenced by Cishan, for thousands of years. It also reflects the unique historical significance of Cishan as the earliest site of chicken domestication and breeding worldwide.

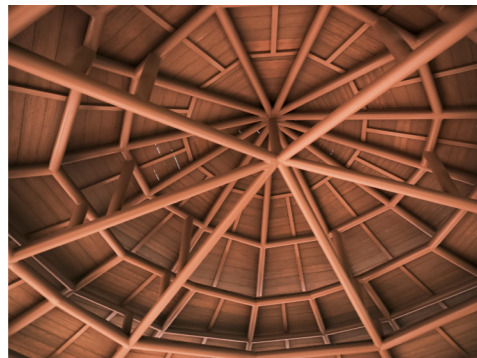




部落木屋结构爆炸图
Tribal Wooden House Structure Explosion Diagram

部落木屋：集秋千、爬网、吊绳和凉亭休憩于一体的装置，反映了古代磁山民居的建筑风格，其特征是木结构圆顶。

Tribal Wooden House: A pavilion for resting, it integrates functions such as swings, climbing nets, and hanging ropes, showcasing the round-topped wooden structure characteristic of Cishan dwellings.





栗拱雕塑
Climbing Facilities



特色旋转木马
Well-Shaped Merry-Go-Round



核桃大座椅
Walnut Seat

栗拱雕塑：位于入口的雕塑具有标本识别和万花筒观察的功能，它还展示了磁山是最早的谷粟种植地。

核桃大座椅：寓意着核桃起源于中原的大型座椅，融合了躺网、拍照打卡点、多人坐憩等有趣的要素。

奔跑三足钵：三足钵主题装置让孩子们在旋转、快速奔跑和感受重力离心力中体验乐趣，还纪念了慈善文化遗址出土的陶顶碗。



奔跑三足钵
Running Tripod Bowl

Millet Arch Sculpture: At the entrance, this sculpture, with its specimen recognition and kaleidoscope functions, symbolizes the earliest millet production site and educates children about grain.

Walnut Seat: Providing a space for lounging, photography, and resting, it celebrates the origin of walnuts in the Central Plains.

Running Tripod Bowl: This installation allows children to experience the fun of spinning, running quickly, and challenging the centrifugal force of gravity. It also commemorates the pottery unearthed at the Cishan site.







项目影响和意义

磁山部落不仅仅是一个休闲场所；它分别将历史与现代、教育与娱乐融为一体。该免费的公共户外空间允许孩子们玩耍、锻炼和了解当地历史，兼具科普教育与娱乐性质。通过特色文脉与各种活动的融合，它重新构建了现代公共体验的历史意义，为该地区带来了活力和吸引力。

此外，该项目回应了当地的历史背景，满足了商业空间和亲子活动的美学诉求和功能需求。通过让孩子们沉浸在8000年历史的磁山文化中，它加强了人们内心的历史文化认同感。磁山部落项目与周边环境的和谐融合，使其成功吸引了游客和本地居民。其为人们提供了享受休闲和放松的空间，并随后成为邯郸市的新文化商业地标。

Project Impact and Significance

The Cishan Tribe project integrates history with the contemporary, education with recreation, adding a leisure spot for citizens and energizing the community. It provides a free public outdoor children's space that responds to the local historical context, subtly combining cultural features with activities to meet the aesthetic and functional needs of commercial spaces as well as parent-child activities. By immersing children in the play of 8,000-year-old Cishan culture, it strengthens cultural identity and historical awareness. The project's seamless integration with the surroundings contributes to the area's vitality and appeal, attracting tourists and locals and becoming a new cultural and commercial landmark in Handan City.

摄影: 胡一昊 FOLOR拂若有光
 设施建造: 上海乐丘游乐
 结构设计: 翼扬(北京)建筑设计有限公司
 设计团队: 胡一昊 彭阳 李铨蹊 刘一何 郑孟子 陈文琪 褚天成 阮成昕 蔡建港

Photo by: Yihao Hu (XISUI Design) and FOLOR Studio
 Construction Firm: Shanghai Lucqplay Facilities CO.,LTD
 Structural Consultant: Spring Architectural Design
 Design Team: Yihao Hu, Yang Peng, Chengxi Li, Yihe Liu, Mengzi Zheng, Wenqi Chen, Tiancheng Chu, Chengxin Ruan, Jiangan Cai